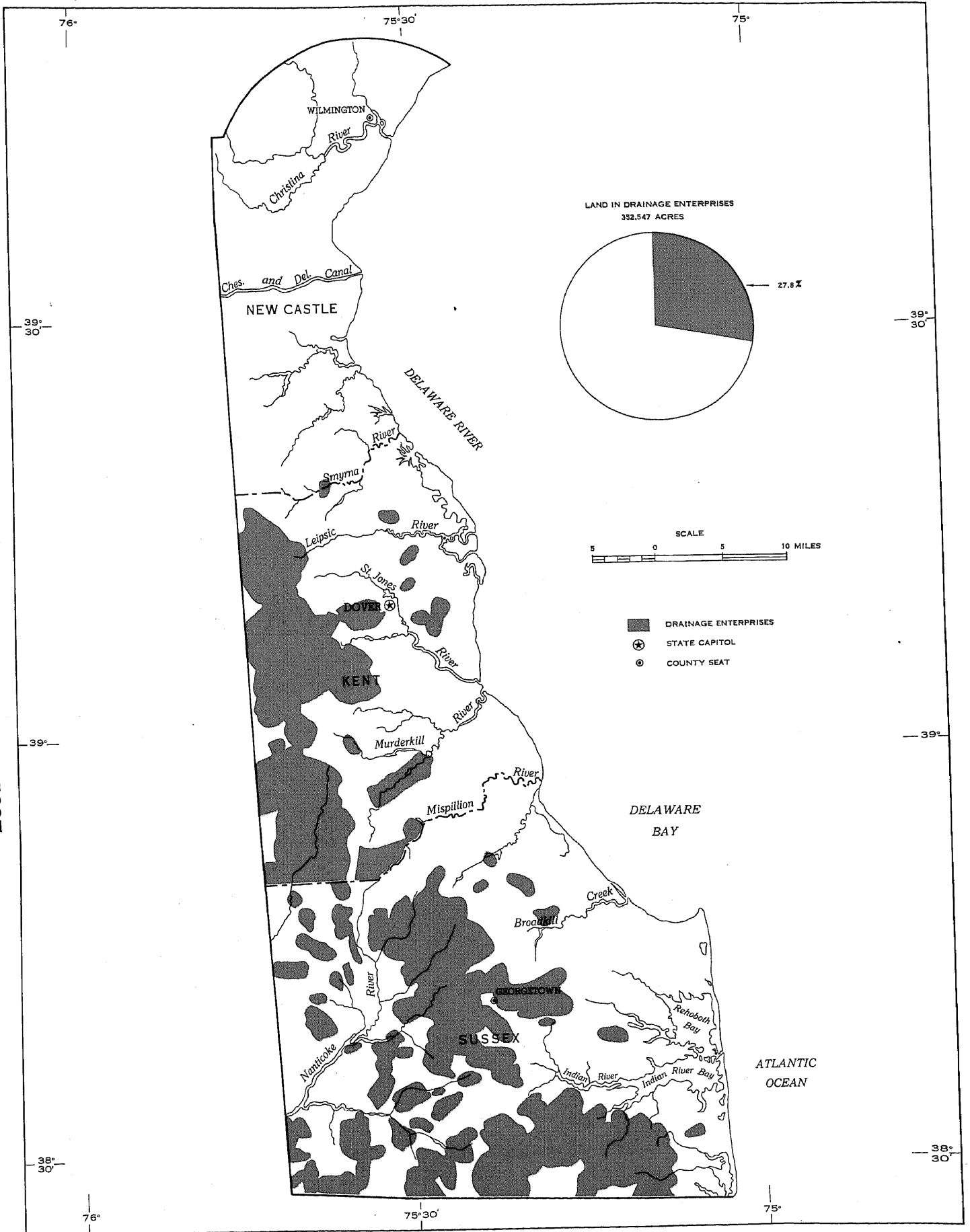


COUNTY-DRAIN STATES

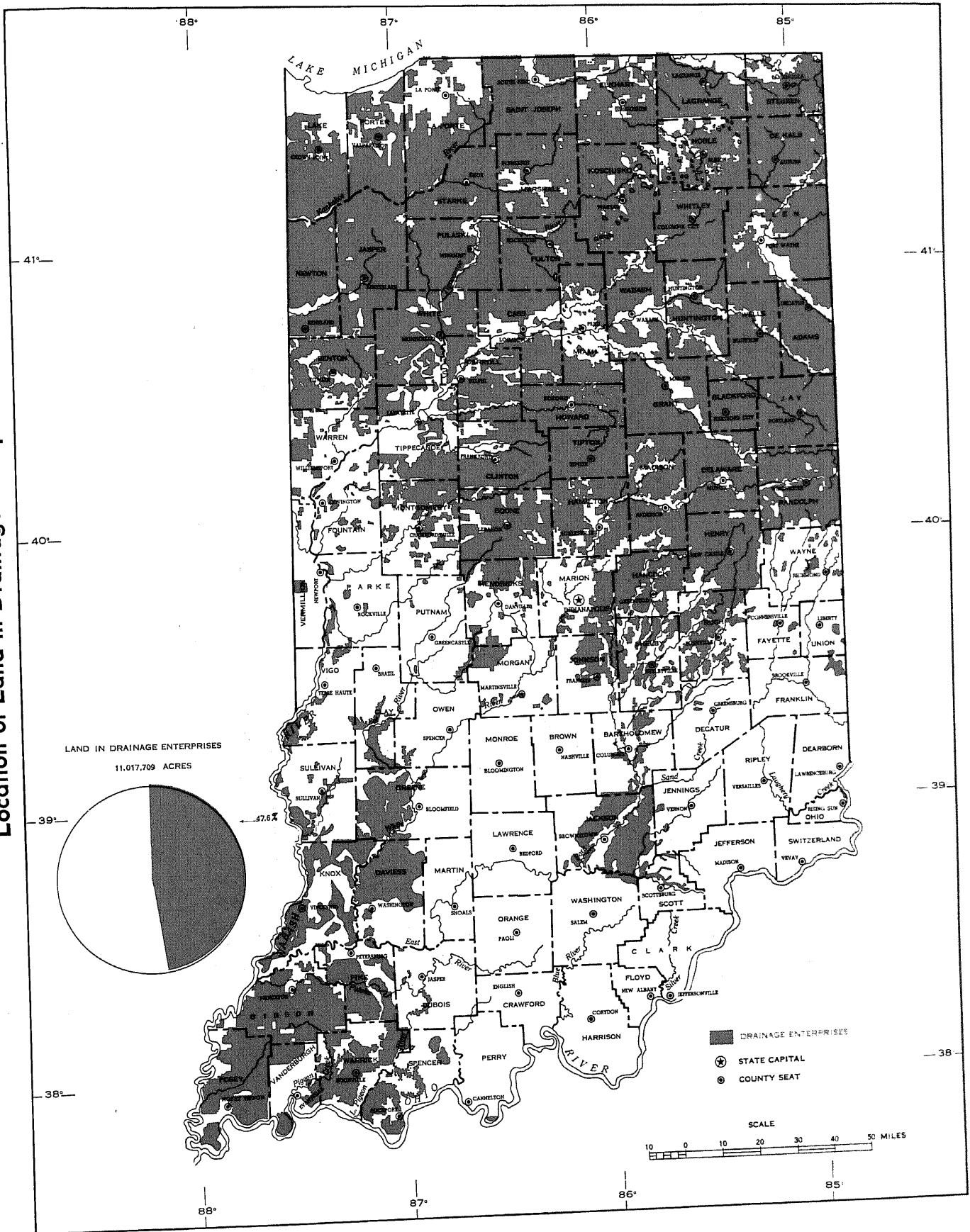
(255)

DRAINAGE OF AGRICULTURAL LANDS

DELAWARE
Location of Land in Drainage Enterprises

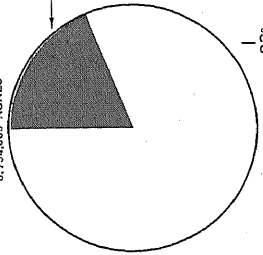
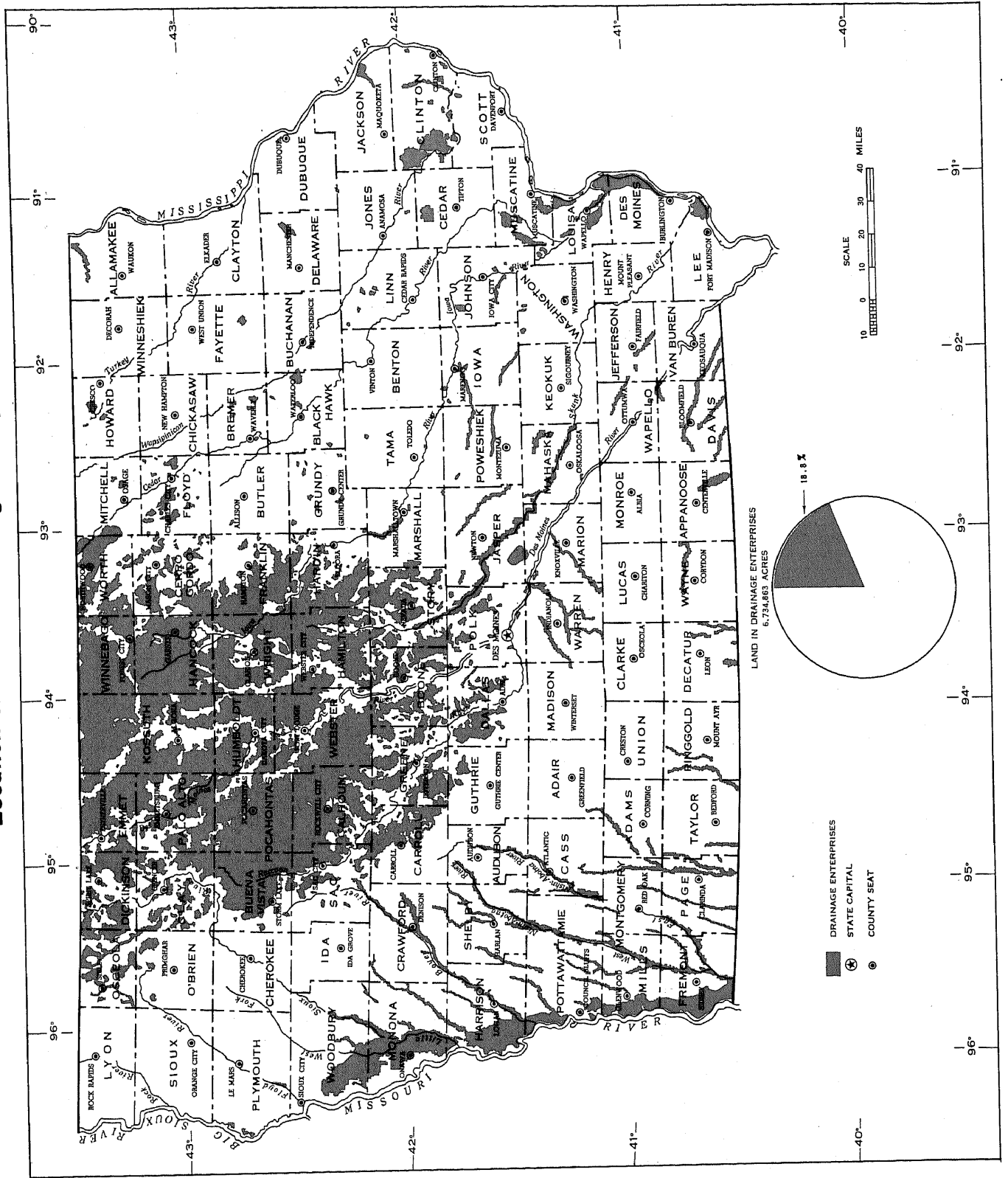


INDIANA
Location of Land in Drainage Enterprises



DRAINAGE OF AGRICULTURAL LANDS

IOWA
Location of Land in Drainage Enterprises

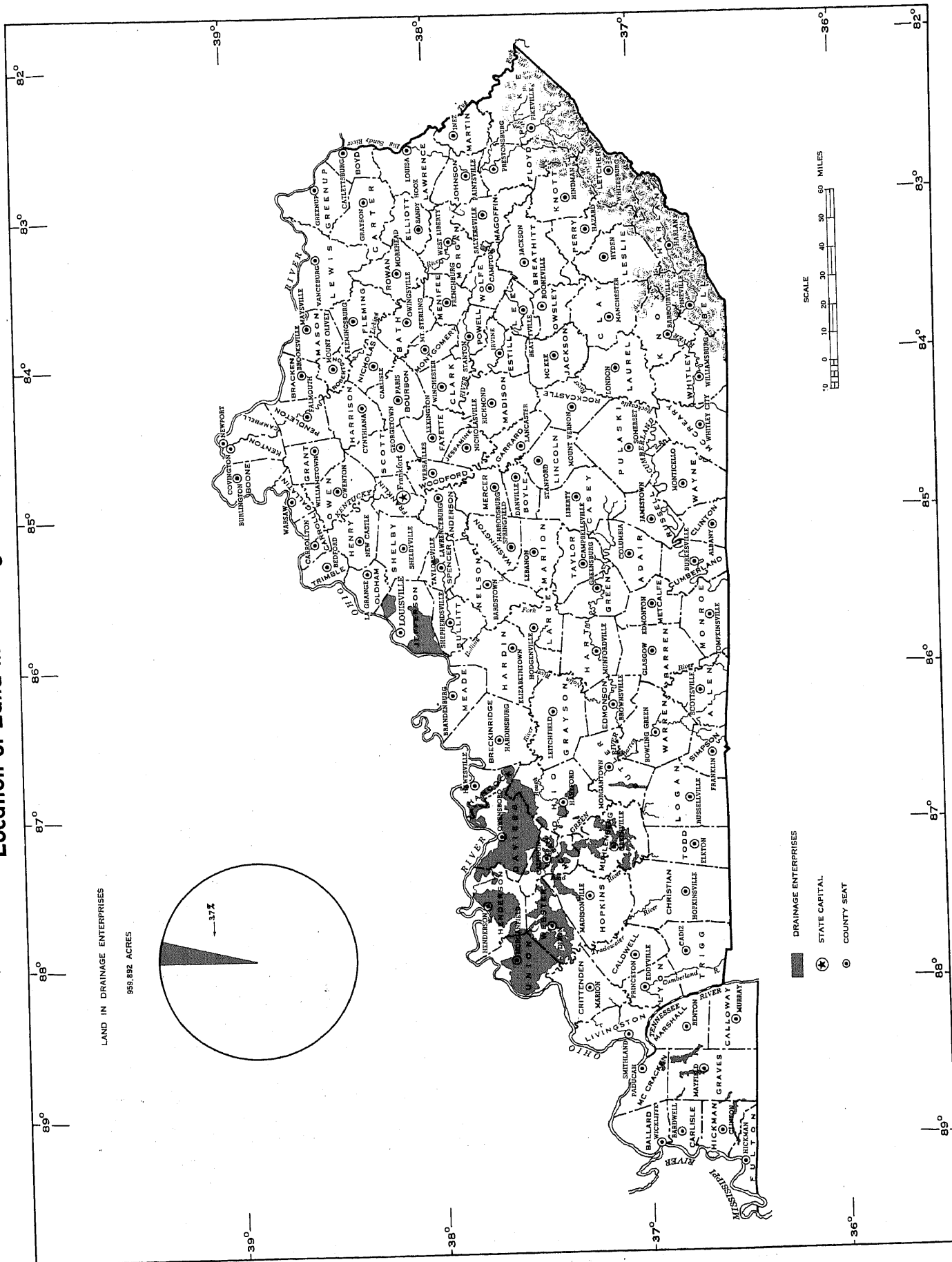


- DRAINAGE ENTERPRISES
- ★ STATE CAPITAL
- COUNTY SEAT

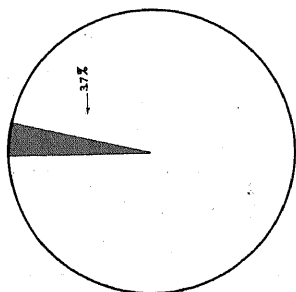


KENTUCKY

Location of Land in Drainage Enterprises

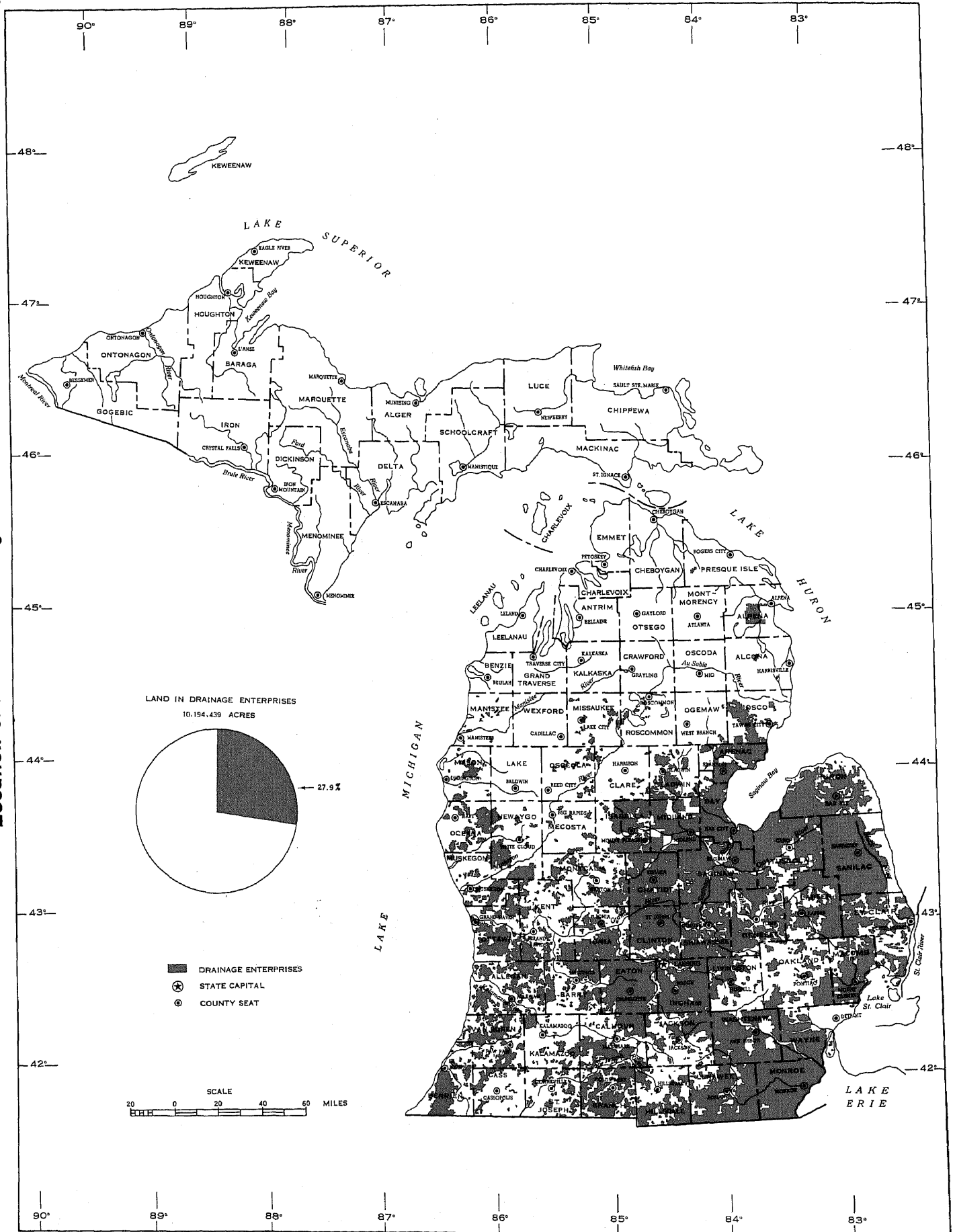


LAND IN DRAINAGE ENTERPRISES
859,892 ACRES

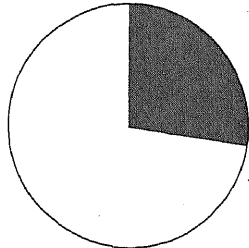


- DRAINAGE ENTERPRISES
- ★ STATE CAPITAL
- COUNTY SEAT

MICHIGAN
Location of Land in Drainage Enterprises



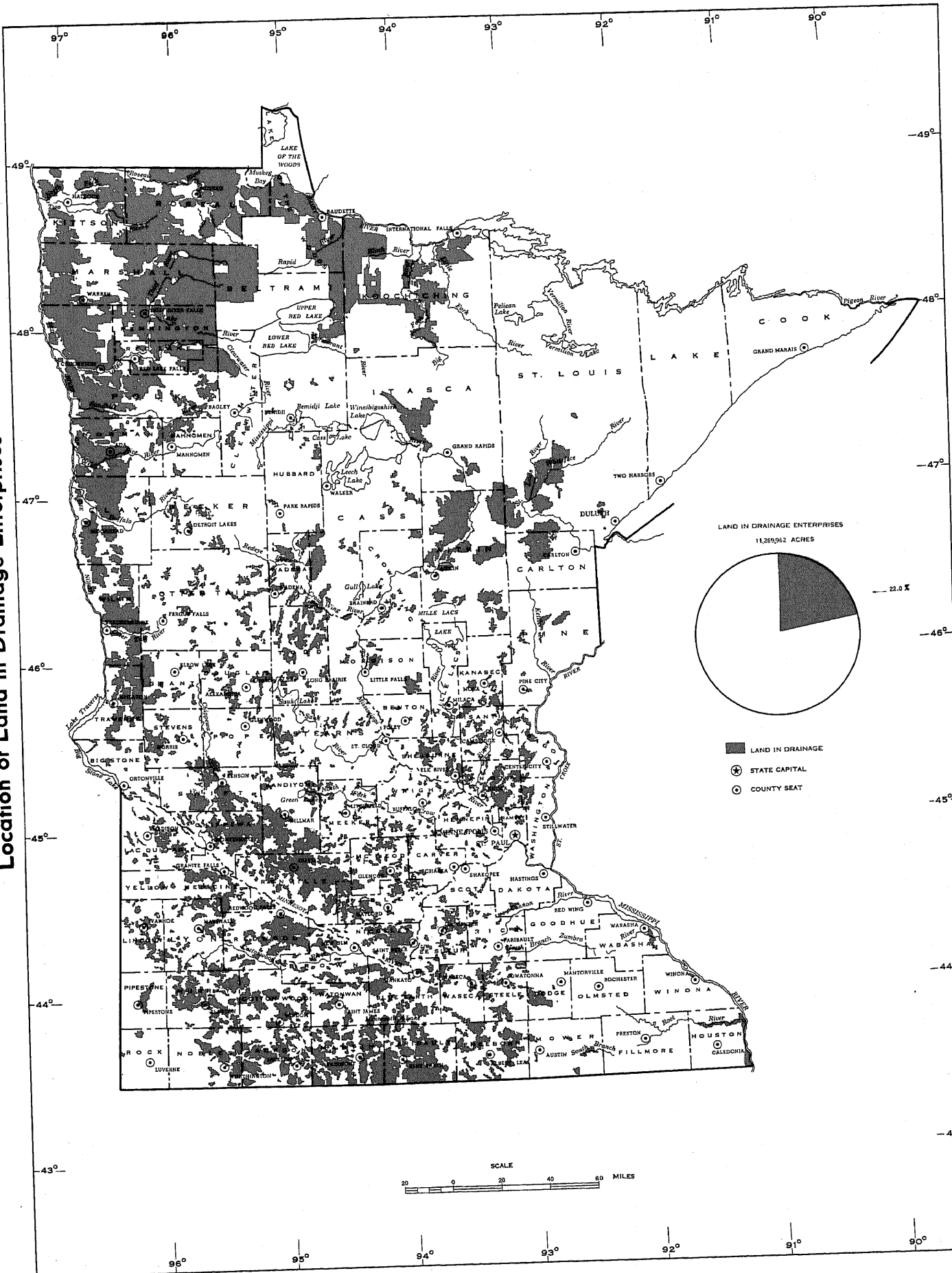
LAND IN DRAINAGE ENTERPRISES
10,194,439 ACRES



- DRAINAGE ENTERPRISES
- ★ STATE CAPITAL
- COUNTY SEAT

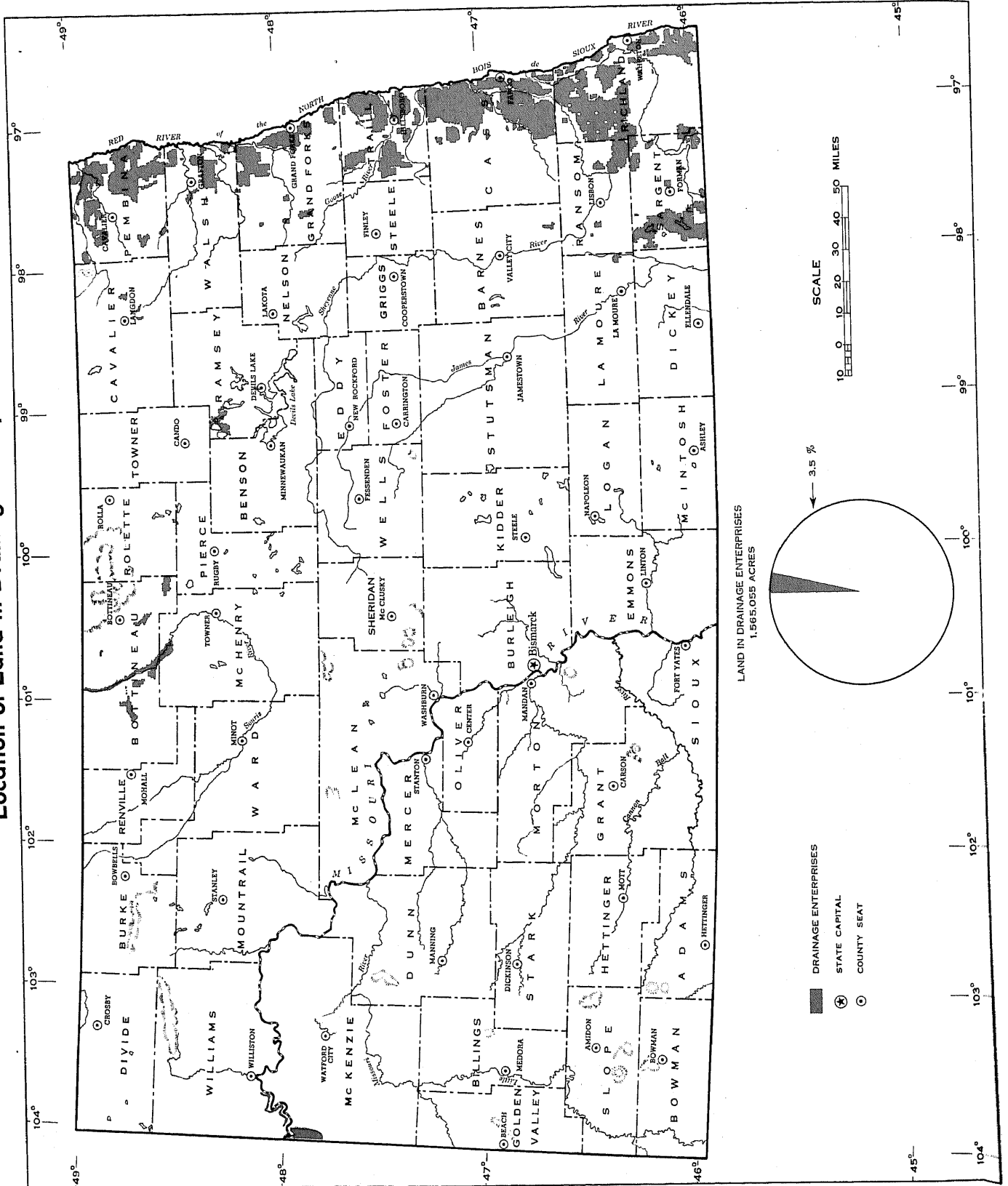
SCALE
0 20 40 60 MILES

MINNESOTA
Location of Land in Drainage Enterprises

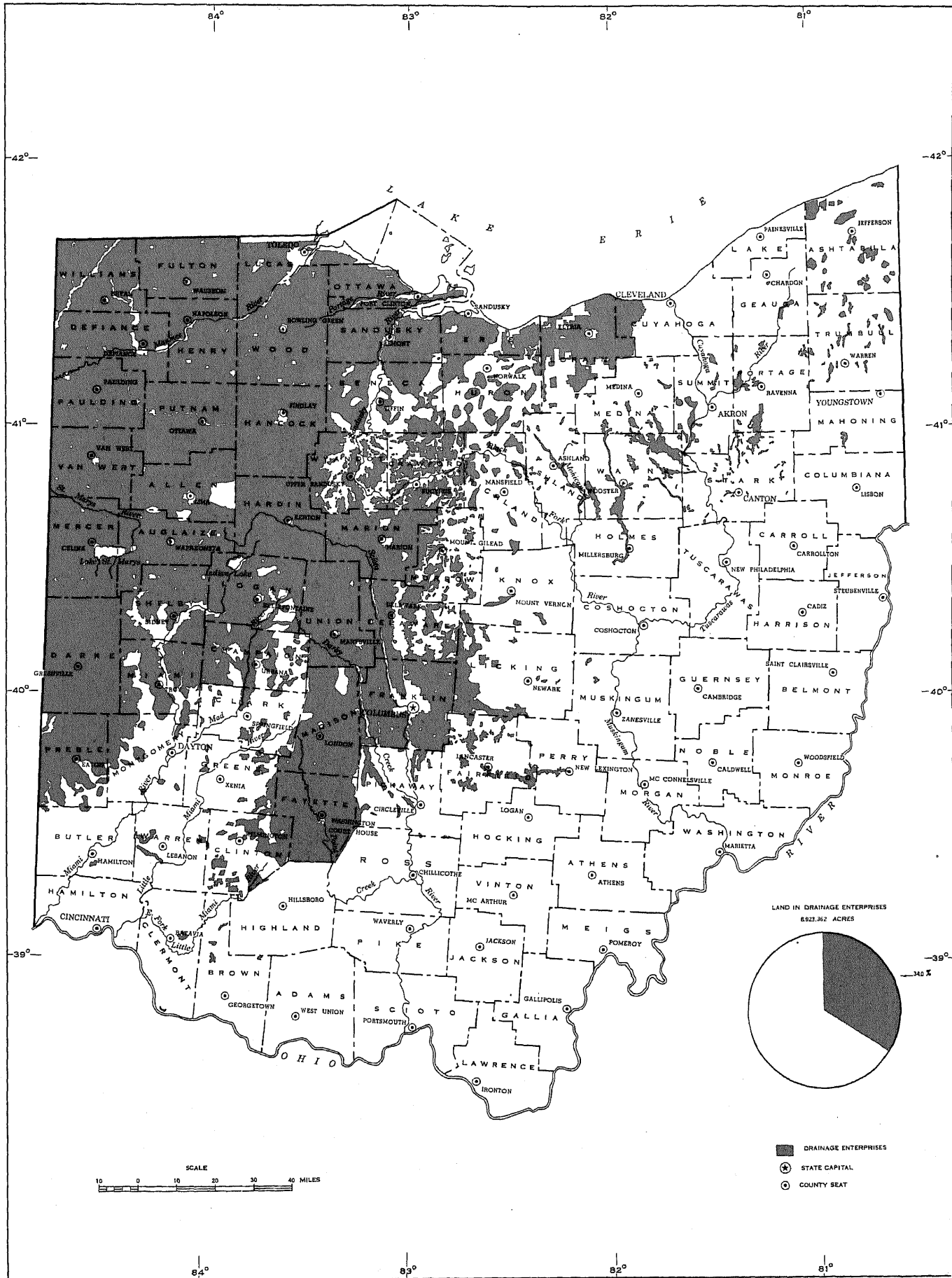


DRAINAGE OF AGRICULTURAL LANDS

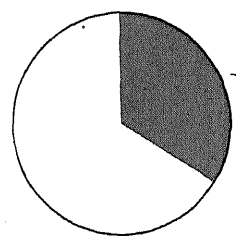
NORTH DAKOTA
Location of Land in Drainage Enterprises



OHIO
Location of Land in Drainage Enterprises



LAND IN DRAINAGE ENTERPRISES
823,962 ACRES

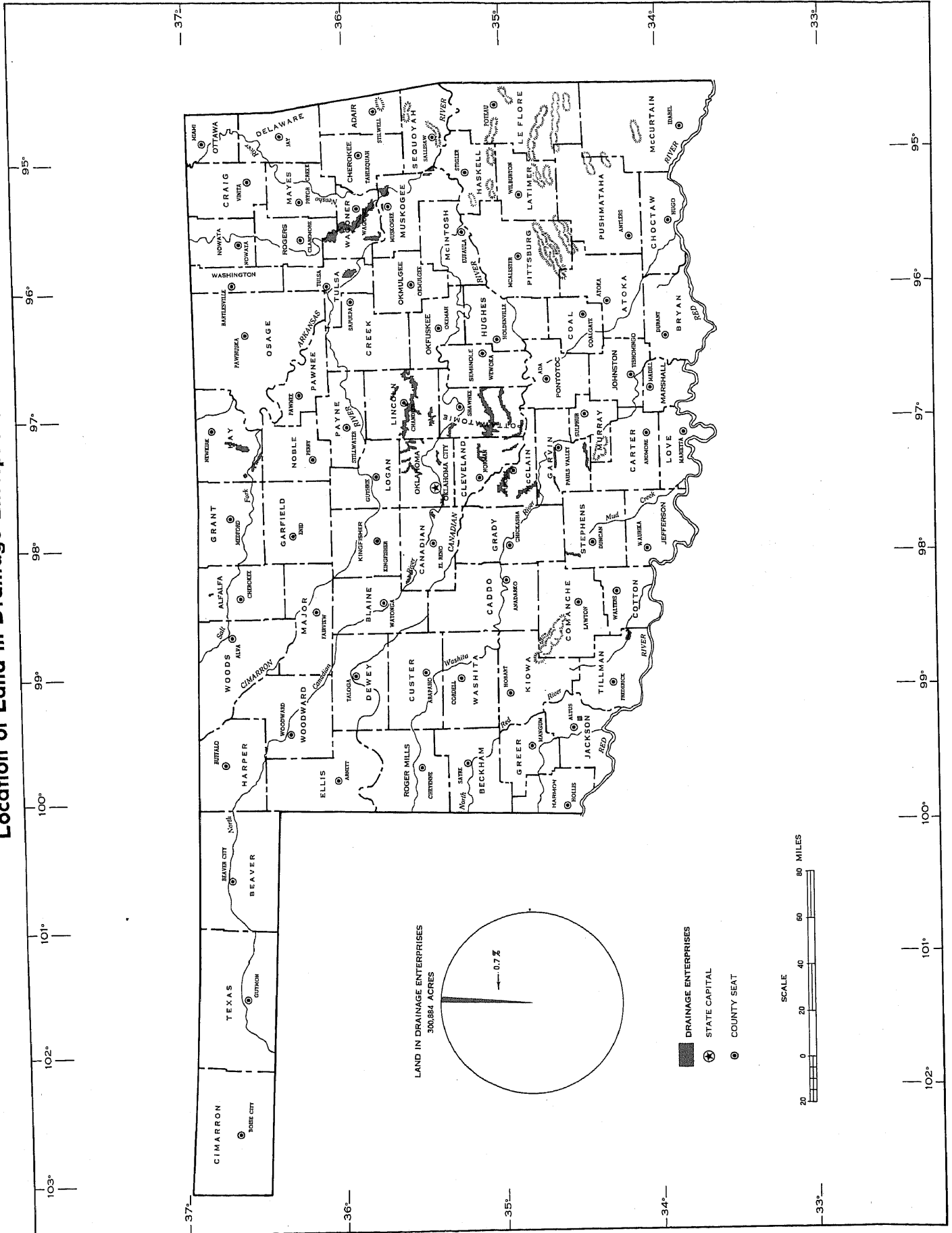


- DRAINAGE ENTERPRISES
- ★ STATE CAPITAL
- COUNTY SEAT

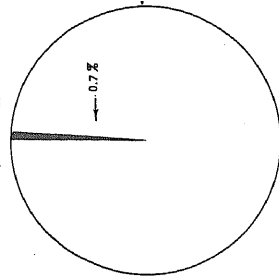
SCALE
10 0 10 20 30 40 MILES

DRAINAGE OF AGRICULTURAL LANDS

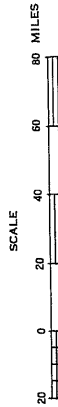
OKLAHOMA
Location of Land in Drainage Enterprises



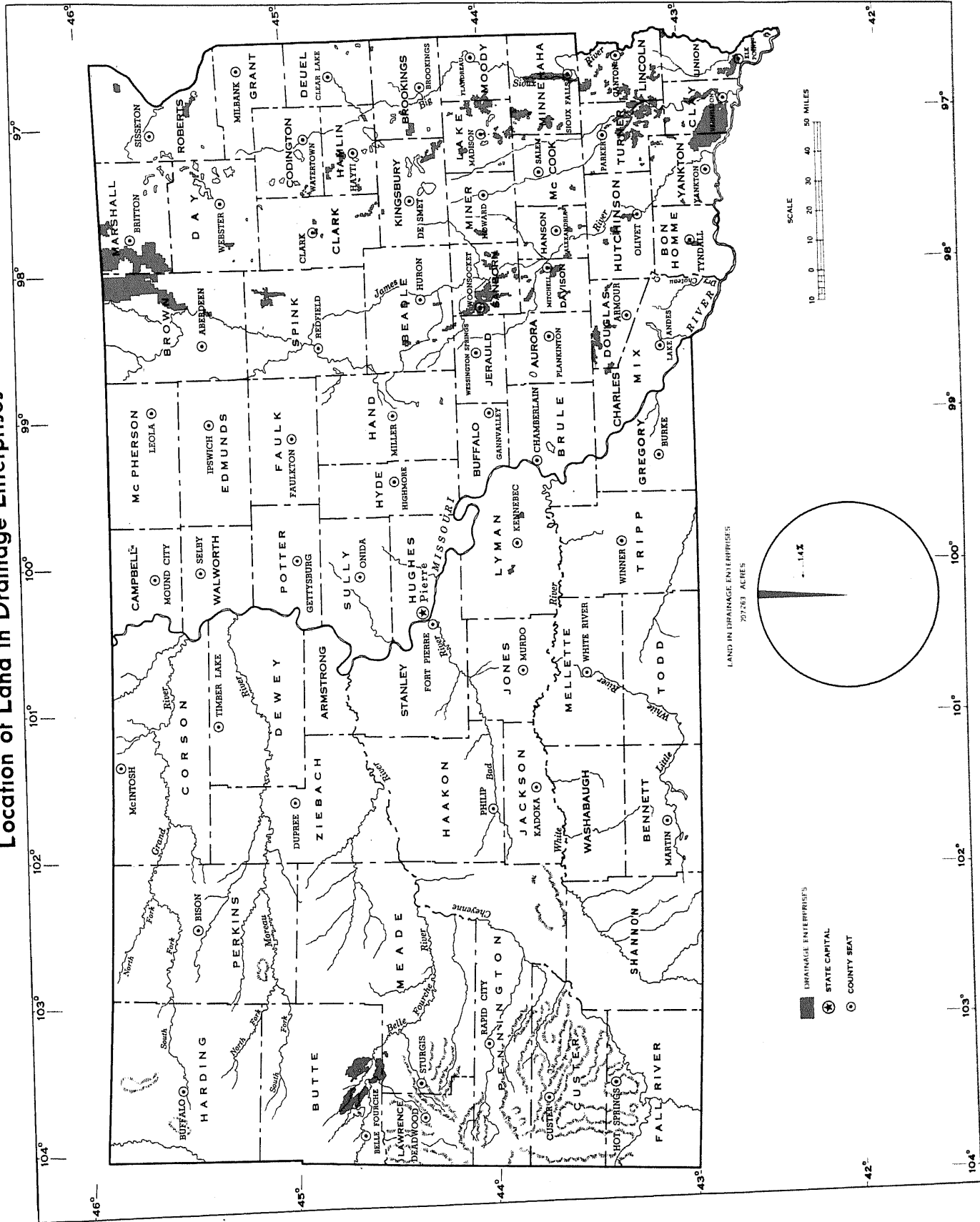
LAND IN DRAINAGE ENTERPRISES
300,884 ACRES



- DRAINAGE ENTERPRISES
- ★ STATE CAPITAL
- COUNTY SEAT



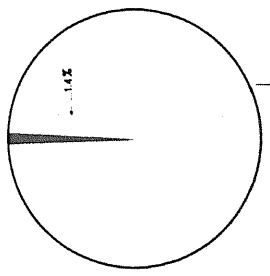
SOUTH DAKOTA Location of Land in Drainage Enterprises



SCALE
10 0 10 20 30 40 50 MILES

LAND IN DRAINAGE ENTERPRISES
207,263 ACRES

- DRAINAGE ENTERPRISES
- ★ STATE CAPITAL
- COUNTY SEAT



State Table 1.—LAND IN DRAINAGE ENTERPRISES, FINANCIAL DATA, AND DRAINAGE WORKS: 1950 AND 1940

Item	1950	1940
LAND AREA		
Approximate land area (see text).....acres..	1,265,920	1,265,920
Land in drainage enterprises.....acres..	352,547	395,014
FINANCIAL ITEMS		
Cost of construction and operation and maintenance Jan. 1, 1940 to Dec. 31, 1949.....dollars..	173,300	xxxxxxxxxxxxxxxxxxxxxxxxxxxx
Cost of new drainage works (for lands not previously drained) Jan. 1, 1940 to Dec. 31, 1949.....dollars..	3,326	xxxxxxxxxxxxxxxxxxxxxxxxxxxx
Capital invested prior to date of census.....dollars..	xxxxxxxxxxxxxxxxxxxxxxxxxxxx	454,865
Funds collected for drainage Jan. 1, 1940 to Dec. 31, 1949.....dollars..	120,096	xxxxxxxxxxxxxxxxxxxxxxxxxxxx
Outstanding indebtedness Dec. 31 of year preceding census.....dollars..	1,271
DRAINAGE WORKS		
Completed since Jan. 1, 1940.....open ditches..miles..	2	xxxxxxxxxxxxxxxxxxxxxxxxxxxx
.....tile drains..miles..	xxxxxxxxxxxxxxxxxxxxxxxxxxxx
.....levees and dikes..miles..	xxxxxxxxxxxxxxxxxxxxxxxxxxxx
Completed prior to date of census.....open ditches..miles..	xxxxxxxxxxxxxxxxxxxxxxxxxxxx	1,482.3
.....tile drains..miles..	xxxxxxxxxxxxxxxxxxxxxxxxxxxx
.....levees and dikes..miles..	xxxxxxxxxxxxxxxxxxxxxxxxxxxx

State Table 2.—COST OF CONSTRUCTION AND OPERATION AND MAINTENANCE, COST OF NEW WORKS, AND FUNDS COLLECTED; BY YEARS: 1940 THROUGH 1949

[Data are for calendar years]

Financial items	Amount (dollars)	Financial items	Amount (dollars)
Cost of construction and operation and maintenance Jan. 1, 1940 to Dec. 31, 1949.....	173,300	Cost of new drainage works—Continued	
1945 to 1949.....	173,300	1940 to 1944.....
1949.....	74,948	1944.....
1948.....	52,787	1943.....
1947.....	36,512	1942.....
1946.....	8,038	1941.....
1945.....	1,015	1940.....
1940 to 1944.....	Funds collected for drainage	
1944.....	Jan. 1, 1940 to Dec. 31, 1949.....	120,096
1943.....	1945 to 1949.....	118,735
1942.....	1949.....	46,198
1941.....	1948.....	26,934
1940.....	1947.....	34,624
Cost of new drainage works (for lands not previously drained) Jan. 1, 1940 to Dec. 31, 1949.....	3,326	1946.....	7,474
1945 to 1949.....	3,326	1945.....	3,505
1949.....	3,326	1940 to 1944.....	1,361
1948.....	1944.....	595
1947.....	1943.....	766
1946.....	1942.....
1945.....	1941.....
		1940.....

State Table 1.—LAND IN DRAINAGE ENTERPRISES, FINANCIAL DATA, AND DRAINAGE WORKS: 1950, 1940, 1930, AND 1920

Item	1950	1940	1930	1920
LAND AREA				
Approximate land area (see text).....acres..	23,171,200	23,153,920	23,068,800	23,068,800
Land in drainage enterprises.....acres..	11,017,709	10,121,952	10,214,014	9,087,183
FINANCIAL ITEMS				
Cost of construction and operation and maintenance Jan. 1, 1940 to Dec. 31, 1949.....dollars..	8,206,459	xxxxxxxxxxxxxxxx	xxxxxxxxxxxxxxxx	xxxxxxxxxxxxxxxx
Cost of new drainage works (for lands not previously drained) Jan. 1, 1940 to Dec. 31, 1949.....dollars..	785,767	xxxxxxxxxxxxxxxx	xxxxxxxxxxxxxxxx	xxxxxxxxxxxxxxxx
Capital invested prior to date of census.....dollars..	xxxxxxxxxxxxxxxx	47,540,385	54,110,854	31,147,682
Funds collected for drainage Jan. 1, 1940 to Dec. 31, 1949.....dollars..	6,733,336	xxxxxxxxxxxxxxxx	xxxxxxxxxxxxxxxx	xxxxxxxxxxxxxxxx
Outstanding indebtedness Dec. 31 of year preceding census.....dollars..	221,102	429,245	(*)	(*)
DRAINAGE WORKS				
Completed since Jan. 1, 1940.....open ditches..miles..	198	xxxxxxxxxxxxxxxx	xxxxxxxxxxxxxxxx	xxxxxxxxxxxxxxxx
.....tile drains..miles..	48	xxxxxxxxxxxxxxxx	xxxxxxxxxxxxxxxx	xxxxxxxxxxxxxxxx
.....levees and dikes..miles..	20	xxxxxxxxxxxxxxxx	xxxxxxxxxxxxxxxx	xxxxxxxxxxxxxxxx
Completed prior to date of census.....open ditches..miles..	xxxxxxxxxxxxxxxx	22,008.1	20,786.8	17,470.7
.....tile drains..miles..	xxxxxxxxxxxxxxxx	10,754.7	10,438.7	8,227.6
.....levees and dikes..miles..	xxxxxxxxxxxxxxxx	139.0	131.9	165.8

*Not available.

State Table 2.—COST OF CONSTRUCTION AND OPERATION AND MAINTENANCE, COST OF NEW WORKS, AND FUNDS COLLECTED; BY YEARS: 1940 THROUGH 1949

[Data are for calendar years]

Financial items	Amount (dollars)	Financial items	Amount (dollars)
Cost of construction and operation and maintenance Jan. 1, 1940 to Dec. 31, 1949.....	8,206,459	Cost of new drainage works—Continued	
1945 to 1949.....	6,035,117	1940 to 1944.....	41,367
1949.....	1,673,405	1944.....	5,092
1948.....	1,419,418	1943.....	8,929
1947.....	1,277,212	1942.....	5,208
1946.....	959,563	1941.....	14,721
1945.....	705,519	1940.....	7,417
1940 to 1944.....	2,171,342	Funds collected for drainage	
1944.....	579,338	Jan. 1, 1940 to Dec. 31, 1949.....	6,733,336
1943.....	379,856	1945 to 1949.....	4,685,003
1942.....	319,010	1949.....	1,405,329
1941.....	374,977	1948.....	901,285
1940.....	518,161	1947.....	1,077,055
Cost of new drainage works (for lands not previously drained) Jan. 1, 1940 to Dec. 31, 1949.....	785,767	1946.....	724,453
1945 to 1949.....	744,400	1945.....	576,881
1949.....	162,983	1940 to 1944.....	2,048,333
1948.....	214,745	1944.....	519,101
1947.....	303,600	1943.....	300,667
1946.....	23,672	1942.....	396,907
1945.....	39,400	1941.....	392,927
		1940.....	438,731

DRAINAGE OF AGRICULTURAL LANDS

IOWA

State Table 1.—LAND IN DRAINAGE ENTERPRISES, FINANCIAL DATA, AND DRAINAGE WORKS: 1950, 1940, 1930, AND 1920

Item	1950	1940	1930	1920
LAND AREA				
Approximate land area (see text).....acres..	35,830,400	35,831,040	35,575,040	35,575,040
Land in drainage enterprises.....acres..	6,734,863	6,164,344	6,137,649	5,224,478
FINANCIAL ITEMS				
Cost of construction and operation and maintenance Jan. 1, 1940 to Dec. 31, 1949.....dollars..	13,302,757	xxxxxxxxxxxxxxxx	xxxxxxxxxxxxxxxx	xxxxxxxxxxxxxxxx
Cost of new drainage works (for lands not previously drained) Jan. 1, 1940 to Dec. 31, 1949.....dollars..	2,143,433	xxxxxxxxxxxxxxxx	xxxxxxxxxxxxxxxx	xxxxxxxxxxxxxxxx
Capital invested prior to date of census.....dollars..	xxxxxxxxxxxxxxxx	75,374,497	77,478,893	49,627,304
Funds collected for drainage Jan. 1, 1940 to Dec. 31, 1949.....dollars..	13,703,726	xxxxxxxxxxxxxxxx	xxxxxxxxxxxxxxxx	xxxxxxxxxxxxxxxx
Outstanding indebtedness Dec. 31 of year preceding census.....dollars..	2,498,927	1,286,932	(*)	(*)
DRAINAGE WORKS				
Completed since Jan. 1, 1940.....open ditches..miles..	203	xxxxxxxxxxxxxxxx	xxxxxxxxxxxxxxxx	xxxxxxxxxxxxxxxx
.....tile drains..miles..	165	xxxxxxxxxxxxxxxx	xxxxxxxxxxxxxxxx	xxxxxxxxxxxxxxxx
.....levees and dikes..miles..	35	xxxxxxxxxxxxxxxx	xxxxxxxxxxxxxxxx	xxxxxxxxxxxxxxxx
Completed prior to date of census.....open ditches..miles..	xxxxxxxxxxxxxxxx	5,189.7	4,800.0	3,998.0
.....tile drains..miles..	xxxxxxxxxxxxxxxx	12,873.2	13,382.4	10,384.9
.....levees and dikes..miles..	xxxxxxxxxxxxxxxx	456.8	113.4	45.2

* Not available.

State Table 2.—COST OF CONSTRUCTION AND OPERATION AND MAINTENANCE, COST OF NEW WORKS, AND FUNDS COLLECTED; BY YEARS: 1940 THROUGH 1949

[Data are for calendar years]

Financial items	Amount (dollars)	Financial items	Amount (dollars)
Cost of construction and operation and maintenance Jan. 1, 1940 to Dec. 31, 1949.....	13,302,757	Cost of new drainage works—Continued	
1945 to 1949.....	9,169,570	1940 to 1944.....	93,068
1949.....	2,632,665	1944.....	40,773
1948.....	2,072,969	1943.....	23,526
1947.....	1,636,312	1942.....	15,767
1946.....	1,616,866	1941.....	3,193
1945.....	1,210,758	1940.....	9,809
1940 to 1944.....	4,133,187	Funds collected for drainage	
1944.....	880,987	Jan. 1, 1940 to Dec. 31, 1949.....	13,703,726
1943.....	802,770	1945 to 1949.....	9,572,838
1942.....	828,131	1949.....	3,111,708
1941.....	844,010	1948.....	2,021,846
1940.....	777,289	1947.....	1,543,524
Cost of new drainage works (for lands not previously drained) Jan. 1, 1940 to Dec. 31, 1949.....	2,143,433	1946.....	1,684,471
1945 to 1949.....	2,050,365	1945.....	1,211,289
1949.....	783,356	1940 to 1944.....	4,130,888
1948.....	479,974	1944.....	911,370
1947.....	259,908	1943.....	833,616
1946.....	326,544	1942.....	789,740
1945.....	200,583	1941.....	858,091
		1940.....	738,071

State Table 1.—LAND IN DRAINAGE ENTERPRISES, FINANCIAL DATA, AND DRAINAGE WORKS: 1950, 1940, 1930, AND 1920

Item	1950	1940	1930	1920
LAND AREA				
Approximate land area (see text).....acres..	25,669,760	25,669,760	25,715,840	25,715,840
Land in drainage enterprises.....acres..	959,892	465,270	585,625	358,480
FINANCIAL ITEMS				
Cost of construction and operation and maintenance Jan. 1, 1940 to Dec. 31, 1949.....dollars..	711,162	xxxxxxxxxxxxxxx	xxxxxxxxxxxxxxx	xxxxxxxxxxxxxxx
Cost of new drainage works (for lands not previously drained) Jan. 1, 1940 to Dec. 31, 1949.....dollars..	44,832	xxxxxxxxxxxxxxx	xxxxxxxxxxxxxxx	xxxxxxxxxxxxxxx
Capital invested prior to date of census.....dollars..	xxxxxxxxxxxxxxx	4,947,994	5,357,638	1,521,725
Funds collected for drainage Jan. 1, 1940 to Dec. 31, 1949.....dollars..	801,518	xxxxxxxxxxxxxxx	xxxxxxxxxxxxxxx	xxxxxxxxxxxxxxx
Outstanding indebtedness Dec. 31 of year preceding census.....dollars..	58,270	758,606	(*)	(*)
DRAINAGE WORKS				
Completed since Jan. 1, 1940.....open ditches..miles..	22	xxxxxxxxxxxxxxx	xxxxxxxxxxxxxxx	xxxxxxxxxxxxxxx
.....tile drains..miles..	1	xxxxxxxxxxxxxxx	xxxxxxxxxxxxxxx	xxxxxxxxxxxxxxx
.....levees and dikes..miles..	xxxxxxxxxxxxxxx	xxxxxxxxxxxxxxx	xxxxxxxxxxxxxxx
Completed prior to date of census.....open ditches..miles..	xxxxxxxxxxxxxxx	1,231.8	1,204.8	664.5
.....tile drains..miles..	xxxxxxxxxxxxxxx	2.0	71.0	86.2
.....levees and dikes..miles..	xxxxxxxxxxxxxxx	0.2

*Not available.

State Table 2.—COST OF CONSTRUCTION AND OPERATION AND MAINTENANCE, COST OF NEW WORKS, AND FUNDS COLLECTED; BY YEARS: 1940 THROUGH 1949

[Data are for calendar years]

Financial items	Amount (dollars)	Financial items	Amount (dollars)
Cost of construction and operation and maintenance		Cost of new drainage works—Continued	
Jan. 1, 1940 to Dec. 31, 1949.....	711,162	1940 to 1944.....	13,665
1945 to 1949.....	440,253	1944.....
1949.....	106,960	1943.....	10,934
1948.....	83,207	1942.....
1947.....	82,649	1941.....	2,731
1946.....	92,628	1940.....
1945.....	74,809		
1940 to 1944.....	270,909	Funds collected for drainage	
1944.....	67,391	Jan. 1, 1940 to Dec. 31, 1949.....	801,518
1943.....	69,245	1945 to 1949.....	481,950
1942.....	55,372	1949.....	102,734
1941.....	31,140	1948.....	87,352
1940.....	47,761	1947.....	108,760
Cost of new drainage works (for lands not previously drained)		1946.....	111,725
Jan. 1, 1940 to Dec. 31, 1949.....	44,832	1945.....	71,379
1945 to 1949.....	31,167	1940 to 1944.....	319,568
1949.....	10,816	1944.....	85,487
1948.....	10,941	1943.....	71,070
1947.....	1,500	1942.....	77,022
1946.....	7,910	1941.....	38,296
1945.....	1940.....	47,693

State Table 1.—LAND IN DRAINAGE ENTERPRISES, FINANCIAL DATA, AND DRAINAGE WORKS: 1950, 1940, 1930, AND 1920

Item	1950	1940	1930	1920
LAND AREA				
Approximate land area (see text).....acres..	36,494,080	36,494,080	36,787,200	36,787,200
Land in drainage enterprises.....acres..	10,194,439	8,978,386	9,180,851	9,729,171
FINANCIAL ITEMS				
Cost of construction and operation and maintenance Jan. 1, 1940 to Dec. 31, 1949.....dollars..	20,235,636	xxxxxxxxxxxxxxxx	xxxxxxxxxxxxxxxx	xxxxxxxxxxxxxxxx
Cost of new drainage works (for lands not previously drained) Jan. 1, 1940 to Dec. 31, 1949.....dollars..	2,556,472	xxxxxxxxxxxxxxxx	xxxxxxxxxxxxxxxx	xxxxxxxxxxxxxxxx
Capital invested prior to date of census.....dollars..	xxxxxxxxxxxxxxxx	40,412,251	37,677,084	24,683,715
Funds collected for drainage Jan. 1, 1940 to Dec. 31, 1949.....dollars..	21,324,715	xxxxxxxxxxxxxxxx	xxxxxxxxxxxxxxxx	xxxxxxxxxxxxxxxx
Outstanding indebtedness Dec. 31 of year preceding census.....dollars..	2,476,509	809,579	(*)	(*)
DRAINAGE WORKS				
Completed since Jan. 1, 1940.....open ditches..miles..	554	xxxxxxxxxxxxxxxx	xxxxxxxxxxxxxxxx	xxxxxxxxxxxxxxxx
.....tile drains..miles..	145	xxxxxxxxxxxxxxxx	xxxxxxxxxxxxxxxx	xxxxxxxxxxxxxxxx
.....levees and dikes..miles..		xxxxxxxxxxxxxxxx	xxxxxxxxxxxxxxxx	xxxxxxxxxxxxxxxx
Completed prior to date of census.....open ditches..miles..	xxxxxxxxxxxxxxxx	19,608.6	17,188.5	16,023.8
.....tile drains..miles..	xxxxxxxxxxxxxxxx	3,229.5	3,490.2	2,173.9
.....levees and dikes..miles..	xxxxxxxxxxxxxxxx	13.6	34.6	33.1

* Not available.

State Table 2.—COST OF CONSTRUCTION AND OPERATION AND MAINTENANCE, COST OF NEW WORKS, AND FUNDS COLLECTED; BY YEARS: 1940 THROUGH 1949

[Data are for calendar years]

Financial items	Amount (dollars)	Financial items	Amount (dollars)
Cost of construction and operation and maintenance Jan. 1, 1940 to Dec. 31, 1949.....	20,235,636	Cost of new drainage works—Continued	
1945 to 1949.....	12,005,996	1940 to 1944.....	603,558
1949.....	2,846,563	1944.....	151,268
1948.....	2,793,940	1943.....	153,370
1947.....	2,664,887	1942.....	138,339
1946.....	2,396,699	1941.....	101,986
1945.....	2,203,907	1940.....	58,595
1940 to 1944.....	7,329,640	Funds collected for drainage	
1944.....	1,611,373	Jan. 1, 1940 to Dec. 31, 1949.....	21,324,715
1943.....	1,450,307	1945 to 1949.....	13,120,920
1942.....	1,603,631	1949.....	2,829,175
1941.....	1,635,733	1948.....	2,906,692
1940.....	1,028,596	1947.....	2,395,899
Cost of new drainage works (for lands not previously drained) Jan. 1, 1940 to Dec. 31, 1949.....	2,556,472	1946.....	2,656,696
1945 to 1949.....	1,952,914	1945.....	2,332,458
1949.....	608,650	1940 to 1944.....	8,203,795
1948.....	519,732	1944.....	1,986,384
1947.....	379,392	1943.....	1,693,848
1946.....	246,732	1942.....	1,747,721
1945.....	198,408	1941.....	1,393,785
		1940.....	1,382,057

State Table 1.—LAND IN DRAINAGE ENTERPRISES, FINANCIAL DATA, AND DRAINAGE WORKS: 1950, 1940, 1930, AND 1920

Item	1950	1940	1930	1920
LAND AREA				
Approximate land area (see text).....acres..	51,205,760	51,205,760	51,749,120	51,749,120
Land in drainage enterprises.....acres..	11,269,962	10,990,409	11,474,683	9,232,709
FINANCIAL ITEMS				
Cost of construction and operation and maintenance Jan. 1, 1940 to Dec. 31, 1949.....dollars..	18,310,583	xxxxxxxxxxxxxxxx	xxxxxxxxxxxxxxxx	xxxxxxxxxxxxxxxx
Cost of new drainage works (for lands not previously drained) Jan. 1, 1940 to Dec. 31, 1949.....dollars..	1,594,914	xxxxxxxxxxxxxxxx	xxxxxxxxxxxxxxxx	xxxxxxxxxxxxxxxx
Capital invested prior to date of census.....dollars..	xxxxxxxxxxxxxxxx	65,576,077	64,139,641	42,017,447
Funds collected for drainage Jan. 1, 1940 to Dec. 31, 1949.....dollars..	15,991,688	xxxxxxxxxxxxxxxx	xxxxxxxxxxxxxxxx	xxxxxxxxxxxxxxxx
Outstanding indebtedness Dec. 31 of year preceding census.....dollars..	3,773,824	6,034,528	(*)	(*)
DRAINAGE WORKS				
Completed since Jan. 1, 1940.....open ditches..miles..	357	xxxxxxxxxxxxxxxx	xxxxxxxxxxxxxxxx	xxxxxxxxxxxxxxxx
.....tile drains..miles..	80	xxxxxxxxxxxxxxxx	xxxxxxxxxxxxxxxx	xxxxxxxxxxxxxxxx
.....levees and dikes..miles..	xxxxxxxxxxxxxxxx	xxxxxxxxxxxxxxxx	xxxxxxxxxxxxxxxx
Completed prior to date of census.....open ditches..miles..	xxxxxxxxxxxxxxxx	15,856.7	14,477.6	14,657.0
.....tile drains..miles..	xxxxxxxxxxxxxxxx	9,893.4	9,451.3	5,924.6
.....levees and dikes..miles..	xxxxxxxxxxxxxxxx	0.4	149.7	0.1

* Not available.

State Table 2.—COST OF CONSTRUCTION AND OPERATION AND MAINTENANCE, COST OF NEW WORKS, AND FUNDS COLLECTED; BY YEARS: 1940 THROUGH 1949

[Data are for calendar years]

Financial items	Amount (dollars)	Financial items	Amount (dollars)
Cost of construction and operation and maintenance Jan. 1, 1940 to Dec. 31, 1949.....	18,310,583	Cost of new drainage works—Continued	
1945 to 1949.....	8,972,063	1940 to 1944.....	95,203
1949.....	2,346,191	1944.....	64,804
1948.....	1,885,116	1943.....	2,589
1947.....	1,419,718	1942.....	21,568
1946.....	1,247,566	1941.....	3,502
1945.....	2,073,472	1940.....	2,740
1940 to 1944.....	9,338,520	Funds collected for drainage	
1944.....	2,039,978	Jan. 1, 1940 to Dec. 31, 1949.....	15,991,688
1943.....	1,602,103	1945 to 1949.....	7,370,617
1942.....	1,768,686	1949.....	1,700,774
1941.....	1,883,810	1948.....	1,464,773
1940.....	2,043,943	1947.....	1,370,078
Cost of new drainage works (for lands not previously drained) Jan. 1, 1940 to Dec. 31, 1949.....	1,594,914	1946.....	1,344,370
1945 to 1949.....	1,499,711	1945.....	1,490,622
1949.....	596,655	1940 to 1944.....	8,621,071
1948.....	336,125	1944.....	1,605,449
1947.....	243,333	1943.....	1,521,498
1946.....	149,618	1942.....	1,723,576
1945.....	173,980	1941.....	1,919,751
		1940.....	1,850,797

State Table 1.—LAND IN DRAINAGE ENTERPRISES, FINANCIAL DATA, AND DRAINAGE WORKS: 1950, 1940, 1930, AND 1920

Item	1950	1940	1930	1920
LAND AREA				
Approximate land area (see text).....acres..	44,834,560	44,834,560	44,917,120	44,917,120
Land in drainage enterprises.....acres..	1,572,220	1,376,041	1,094,142	1,240,328
FINANCIAL ITEMS				
Cost of construction and operation and maintenance Jan. 1, 1940 to Dec. 31, 1949.....dollars..	890,373	xxxxxxxxxxxxxxxxxxxx	xxxxxxxxxxxxxxxxxxxx	xxxxxxxxxxxxxxxxxxxx
Cost of new drainage works (for lands not previously drained) Jan. 1, 1940 to Dec. 31, 1949.....dollars..	245,364	xxxxxxxxxxxxxxxxxxxx	xxxxxxxxxxxxxxxxxxxx	xxxxxxxxxxxxxxxxxxxx
Capital invested prior to date of census.....dollars..	xxxxxxxxxxxxxxxxxxxx	3,673,336	3,148,919	2,208,049
Funds collected for drainage Jan. 1, 1940 to Dec. 31, 1949.....dollars..	964,092	xxxxxxxxxxxxxxxxxxxx	xxxxxxxxxxxxxxxxxxxx	xxxxxxxxxxxxxxxxxxxx
Outstanding indebtedness Dec. 31 of year preceding census.....dollars..	182,591	184,096	(*)	(*)
DRAINAGE WORKS				
Completed since Jan. 1, 1940.....open ditches..miles..	94	xxxxxxxxxxxxxxxxxxxx	xxxxxxxxxxxxxxxxxxxx	xxxxxxxxxxxxxxxxxxxx
.....tile drains..miles..		xxxxxxxxxxxxxxxxxxxx	xxxxxxxxxxxxxxxxxxxx	xxxxxxxxxxxxxxxxxxxx
.....levees and dikes..miles..		xxxxxxxxxxxxxxxxxxxx	xxxxxxxxxxxxxxxxxxxx	xxxxxxxxxxxxxxxxxxxx
Completed prior to date of census.....open ditches..miles..	xxxxxxxxxxxxxxxxxxxx	940.4	817.6	708.3
.....tile drains..miles..	xxxxxxxxxxxxxxxxxxxx	10.4	9.6	9.3
.....levees and dikes..miles..	xxxxxxxxxxxxxxxxxxxx			2.1

* Not available.

State Table 2.—COST OF CONSTRUCTION AND OPERATION AND MAINTENANCE, COST OF NEW WORKS, AND FUNDS COLLECTED; BY YEARS: 1940 THROUGH 1949

[Data are for calendar years]

Financial items	Amount (dollars)	Financial items	Amount (dollars)
Cost of construction and operation and maintenance		Cost of new drainage works—Continued	
Jan. 1, 1940 to Dec. 31, 1949.....	890,373	1940 to 1944.....	580
1945 to 1949.....	834,609	1944.....	
1949.....	151,816	1943.....	580
1948.....	236,335	1942.....	
1947.....	237,591	1941.....	
1946.....	159,600	1940.....	
1945.....	49,267		
1940 to 1944.....	55,764	Funds collected for drainage	
1944.....	17,305	Jan. 1, 1940 to Dec. 31, 1949.....	964,092
1943.....	15,372	1945 to 1949.....	888,958
1942.....	8,094	1949.....	166,620
1941.....	5,870	1948.....	219,787
1940.....	9,123	1947.....	249,707
Cost of new drainage works (for lands not previously drained)		1946.....	194,805
Jan. 1, 1940 to Dec. 31, 1949.....	245,364	1945.....	58,039
1945 to 1949.....	244,784	1940 to 1944.....	75,134
1949.....	28,387	1944.....	30,009
1948.....	54,212	1943.....	11,856
1947.....	102,207	1942.....	8,300
1946.....	53,590	1941.....	6,030
1945.....	6,388	1940.....	18,939

State Table 1.—LAND IN DRAINAGE ENTERPRISES, FINANCIAL DATA, AND DRAINAGE WORKS: 1950, 1940, 1930, AND 1920

Item	1950	1940	1930	1920
LAND AREA				
Approximate land area (see text).....acres..	26,318,080	26,318,080	26,073,600	26,073,600
Land in drainage enterprises.....acres..	8,923,362	7,729,267	8,165,494	8,107,204
FINANCIAL ITEMS				
Cost of construction and operation and maintenance Jan. 1, 1940 to Dec. 31, 1949.....dollars..	6,189,421	XXXXXXXXXXXXXXXX	XXXXXXXXXXXXXXXX	XXXXXXXXXXXXXXXX
Cost of new drainage works (for lands not previously drained) Jan. 1, 1940 to Dec. 31, 1949.....dollars..	147,941	XXXXXXXXXXXXXXXX	XXXXXXXXXXXXXXXX	XXXXXXXXXXXXXXXX
Capital invested prior to date of census.....dollars..	XXXXXXXXXXXXXXXX	35,215,586	36,836,449	30,680,145
Funds collected for drainage Jan. 1, 1940 to Dec. 31, 1949.....dollars..	5,117,426	XXXXXXXXXXXXXXXX	XXXXXXXXXXXXXXXX	XXXXXXXXXXXXXXXX
Outstanding indebtedness Dec. 31 of year preceding census.....dollars..	398,874	303,447	(*)	(*)
DRAINAGE WORKS				
Completed since Jan. 1, 1940.....open ditches..miles..	38	XXXXXXXXXXXXXXXX	XXXXXXXXXXXXXXXX	XXXXXXXXXXXXXXXX
.....tile drains..miles..	7	XXXXXXXXXXXXXXXX	XXXXXXXXXXXXXXXX	XXXXXXXXXXXXXXXX
.....levees and dikes..miles..		XXXXXXXXXXXXXXXX	XXXXXXXXXXXXXXXX	XXXXXXXXXXXXXXXX
Completed prior to date of census.....open ditches..miles..	XXXXXXXXXXXXXXXX	18,732.2	25,048.2	24,984.0
.....tile drains..miles..	XXXXXXXXXXXXXXXX	10,163.9	9,371.6	9,205.3
.....levees and dikes..miles..	XXXXXXXXXXXXXXXX	5.2	0.3	9.6

* Not available.

State Table 2.—COST OF CONSTRUCTION AND OPERATION AND MAINTENANCE, COST OF NEW WORKS, AND FUNDS COLLECTED, BY YEARS: 1940 THROUGH 1949

[Data are for calendar years]

Financial items	Amount (dollars)	Financial items	Amount (dollars)
Cost of construction and operation and maintenance		Cost of new drainage works—Continued	
Jan. 1, 1940 to Dec. 31, 1949.....	6,189,421	1940 to 1944.....	26,862
1945 to 1949.....	4,639,702	1944.....	183
1949.....	1,280,696	1943.....	9,010
1948.....	1,297,825	1942.....	2,452
1947.....	961,568	1941.....	12,535
1946.....	685,043	1940.....	2,682
1945.....	414,570		
1940 to 1944.....	1,549,719	Funds collected for drainage	
1944.....	374,025	Jan. 1, 1940 to Dec. 31, 1949.....	5,117,426
1943.....	242,850	1945 to 1949.....	3,392,434
1942.....	228,120	1949.....	885,757
1941.....	304,381	1948.....	876,240
1940.....	400,343	1947.....	730,903
		1946.....	557,981
Cost of new drainage works (for lands not previously drained)		1945.....	341,553
Jan. 1, 1940 to Dec. 31, 1949.....	147,941	1940 to 1944.....	1,724,992
1945 to 1949.....	121,079	1944.....	316,486
1949.....	35,701	1943.....	331,788
1948.....	52,795	1942.....	348,236
1947.....	16,874	1941.....	359,263
1946.....	2,586	1940.....	369,219
1945.....	13,123		

DRAINAGE OF AGRICULTURAL LANDS

OKLAHOMA

State Table 1.—LAND IN DRAINAGE ENTERPRISES, FINANCIAL DATA, AND DRAINAGE WORKS: 1950, 1940, 1930, AND 1920

Item	1950	1940	1930	1920
LAND AREA				
Approximate land area (see text).....acres..	44,341,120	44,341,120	44,424,960	44,424,960
Land in drainage enterprises.....acres..	300,884	197,646	170,158	12,150
FINANCIAL ITEMS				
Cost of construction and operation and maintenance Jan. 1, 1940 to Dec. 31, 1949.....dollars..	299,114	XXXXXXXXXXXXXX	XXXXXXXXXXXXXX	XXXXXXXXXXXXXX
Cost of new drainage works (for lands not previously drained) Jan. 1, 1940 to Dec. 31, 1949.....dollars..	62,027	XXXXXXXXXXXXXX	XXXXXXXXXXXXXX	XXXXXXXXXXXXXX
Capital invested prior to date of census.....dollars..	XXXXXXXXXXXXXX	1,971,350	2,283,598	76,415
Funds collected for drainage Jan. 1, 1940 to Dec. 31, 1949.....dollars..	276,412	XXXXXXXXXXXXXX	XXXXXXXXXXXXXX	XXXXXXXXXXXXXX
Outstanding indebtedness Dec. 31 of year preceding census.....dollars..	197,489	262,199	(*)	(*)
DRAINAGE WORKS				
Completed since Jan. 1, 1940.....open ditches..miles..	16	XXXXXXXXXXXXXX	XXXXXXXXXXXXXX	XXXXXXXXXXXXXX
.....tile drains..miles..		XXXXXXXXXXXXXX	XXXXXXXXXXXXXX	XXXXXXXXXXXXXX
.....levees and dikes..miles..		XXXXXXXXXXXXXX	XXXXXXXXXXXXXX	XXXXXXXXXXXXXX
Completed prior to date of census.....open ditches..miles..	XXXXXXXXXXXXXX	334.3	303.0	18.6
.....tile drains..miles..	XXXXXXXXXXXXXX			
.....levees and dikes..miles..	XXXXXXXXXXXXXX			5.0

* Not available.

State Table 2.—COST OF CONSTRUCTION AND OPERATION AND MAINTENANCE, COST OF NEW WORKS, AND FUNDS COLLECTED; BY YEARS: 1940 THROUGH 1949

[Data are for calendar years]

Financial items	Amount (dollars)	Financial items	Amount (dollars)
Cost of construction and operation and maintenance		Cost of new drainage works—Continued	
Jan. 1, 1940 to Dec. 31, 1949.....	299,114	1940 to 1944.....	
1945 to 1949.....	96,420	1944.....	
1949.....	69,799	1943.....	
1948.....	799	1942.....	
1947.....	11,223	1941.....	
1946.....	9,250	1940.....	
1945.....	5,349		
1940 to 1944.....	202,694	Funds collected for drainage	
1944.....	14,946	Jan. 1, 1940 to Dec. 31, 1949.....	276,412
1943.....	38,227	1945 to 1949.....	52,166
1942.....	36,613	1949.....	8,765
1941.....	70,799	1948.....	5,198
1940.....	42,109	1947.....	15,490
Cost of new drainage works (for lands not previously drained)		1946.....	8,858
Jan. 1, 1940 to Dec. 31, 1949.....	62,027	1945.....	13,855
1945 to 1949.....	62,027	1940 to 1944.....	224,246
1949.....	62,027	1944.....	13,740
1948.....		1943.....	52,262
1947.....		1942.....	39,231
1946.....		1941.....	75,227
1945.....		1940.....	43,786

State Table 1.—LAND IN DRAINAGE ENTERPRISES, FINANCIAL DATA, AND DRAINAGE WORKS: 1950, 1940, 1930, AND 1920

Item	1950	1940	1930	1920
LAND AREA				
Approximate land area (see text).....acres..	48,983,040	48,983,040	49,195,520	49,195,520
Land in drainage enterprises.....acres..	707,263	676,472	697,758	222,062
FINANCIAL ITEMS				
Cost of construction and operation and maintenance Jan. 1, 1940 to Dec. 31, 1949.....dollars..	483,275	xxxxxxxxxxxxxxxx	xxxxxxxxxxxxxxxx	xxxxxxxxxxxxxxxx
Cost of new drainage works (for lands not previously drained) Jan. 1, 1940 to Dec. 31, 1949.....dollars..		xxxxxxxxxxxxxxxx	xxxxxxxxxxxxxxxx	xxxxxxxxxxxxxxxx
Capital invested prior to date of census.....dollars..	xxxxxxxxxxxxxxxx	5,078,771	4,534,768	1,461,063
Funds collected for drainage Jan. 1, 1940 to Dec. 31, 1949.....dollars..	470,508	xxxxxxxxxxxxxxxx	xxxxxxxxxxxxxxxx	xxxxxxxxxxxxxxxx
Outstanding indebtedness Dec. 31 of year preceding census.....dollars..	721,885	1,132,904	(*)	(*)
DRAINAGE WORKS				
Completed since Jan. 1, 1940.....open ditches..miles..		xxxxxxxxxxxxxxxx	xxxxxxxxxxxxxxxx	xxxxxxxxxxxxxxxx
.....tile drains..miles..		xxxxxxxxxxxxxxxx	xxxxxxxxxxxxxxxx	xxxxxxxxxxxxxxxx
.....levees and dikes..miles..		xxxxxxxxxxxxxxxx	xxxxxxxxxxxxxxxx	xxxxxxxxxxxxxxxx
Completed prior to date of census.....open ditches..miles..	xxxxxxxxxxxxxxxx	840.7	854.4	237.8
.....tile drains..miles..	xxxxxxxxxxxxxxxx	335.8	315.3	179.3
.....levees and dikes..miles..	xxxxxxxxxxxxxxxx	7.4	2.4

*Not available.

State Table 2.—COST OF CONSTRUCTION AND OPERATION AND MAINTENANCE, COST OF NEW WORKS, AND FUNDS COLLECTED; BY YEARS: 1940 THROUGH 1949

[Data are for calendar years]

Financial items	Amount (dollars)	Financial items	Amount (dollars)
Cost of construction and operation and maintenance		Cost of new drainage works—Continued	
Jan. 1, 1940 to Dec. 31, 1949.....	483,275	1940 to 1944.....	
1945 to 1949.....	257,335	1944.....	
1949.....	28,717	1943.....	
1948.....	38,885	1942.....	
1947.....	84,013	1941.....	
1946.....	47,435	1940.....	
1945.....	58,285		
1940 to 1944.....	225,940	Funds collected for drainage	
1944.....	33,870	Jan. 1, 1940 to Dec. 31, 1949.....	470,508
1943.....	35,834	1945 to 1949.....	234,219
1942.....	51,785	1949.....	32,857
1941.....	49,748	1948.....	29,142
1940.....	54,703	1947.....	80,652
Cost of new drainage works (for lands not previously drained)		1946.....	46,266
Jan. 1, 1940 to Dec. 31, 1949.....		1945.....	45,302
1945 to 1949.....		1940 to 1944.....	236,289
1949.....		1944.....	36,440
1948.....		1943.....	41,722
1947.....		1942.....	45,976
1946.....		1941.....	51,648
1945.....		1940.....	60,503

DRAINAGE OF AGRICULTURAL LANDS

County Table 1.—LAND IN DRAINAGE ENTERPRISES AND RELATED FINANCIAL ITEMS: CENSUSES OF DRAINAGE 1950 AND 1940

[Both censuses taken as of January 1]

Item	Delaware			Indiana							
	The State	Kent	Sussex	The State	Adams	Allen	Bartholomew	Benton	Blackford	Boone	Carroll
LAND AREA											
Approximate land area.....acres..1950..	1,265,920	380,800	605,440	23,171,200	220,800	429,440	257,280	261,760	106,880	273,280	239,360
Land in drainage enterprises.....acres..1950..	352,547	133,129	219,418	11,017,709	191,360	349,056	36,096	190,244	103,168	231,496	172,825
.....1940..	395,014	135,949	259,065	10,121,952	165,895	375,951	24,255	181,604	100,430	218,843	180,280
FINANCIAL ITEMS											
Cost of construction and operation and maintenance.....Jan. 1, 1940 to Dec. 31, 1949..dollars..	173,300	33,037	140,263	8,206,459	120,996	310,716	61,057	276,138	64,074	149,528	184,414
.....1945 to 1949..dollars..	173,300	33,037	140,263	6,035,117	112,794	259,442	43,228	177,244	30,141	84,362	153,766
.....1940 to 1944..dollars..	2,171,342	8,202	51,274	17,829	98,894	33,933	65,166	30,648
Cost of new drainage works.....Jan. 1, 1940 to Dec. 31, 1949..dollars..	3,326	3,326	785,767	26,687	14,285
.....1945 to 1949..dollars..	3,326	3,326	744,400	26,687	14,285
.....1940 to 1944..dollars..	41,367
Capital invested prior to 1940 ¹dollars..	454,883	251,449	203,434	47,540,385	431,050	2,102,766	62,965	1,377,113	452,718	1,112,174	962,486
Funds collected for drainage.....Jan. 1, 1940 to Dec. 31, 1949..dollars..	120,096	9,833	110,263	6,733,336	100,470	255,162	57,958	128,172	69,426	141,716	121,886
.....1945 to 1949..dollars..	118,735	8,472	110,263	4,685,003	89,057	180,326	46,414	90,455	26,046	89,975	108,606
.....1940 to 1944..dollars..	1,361	1,361	2,048,333	11,413	74,836	11,544	37,717	43,380	51,741	13,280
Outstanding indebtedness.....Dec. 31, 1949..dollars..	221,102	727	40,661
.....Dec. 31, 1939..dollars..	1,271	1,271	429,245	7,000	31,127	3,263
DRAINAGE WORKS											
Completed since Jan. 1, 1940.....open ditches..miles..	2	2	198	2
.....tile drains..miles..	48
.....levees and dikes..miles..	20
Completed prior to 1940 ¹open ditches..miles..	1,482.3	326.9	1,155.4	22,008.1	500.1	1,576.0	82.9	214.7	218.8	562.1	474.5
.....tile drains..miles..	10,754.7	148.7	329.3	10.2	179.8	103.2	338.5	366.4
.....levees and dikes..miles..	139.0	1.2

Item	Indiana—Con.										
	Cass	Clay	Clinton	Daviess	Decatur	De Kalb	Delaware	Dubois	Elkhart	Fayette	Fountain
LAND AREA											
Approximate land area.....acres..1950..	265,600	232,960	260,480	277,120	236,800	233,600	256,000	277,120	299,520	137,600	254,080
Land in drainage enterprises.....acres..1950..	172,288	34,976	205,824	153,600	4,352	212,736	218,624	8,704	212,736	11,878	27,892
.....1940..	173,983	39,266	213,302	97,774	2,891	211,550	210,725	14,630	207,804	9,248	22,670
FINANCIAL ITEMS											
Cost of construction and operation and maintenance.....Jan. 1, 1940 to Dec. 31, 1949..dollars..	197,646	62,320	167,685	25,667	6,149	93,042	73,429	610	35,745	1,470	7,635
.....1945 to 1949..dollars..	75,220	31,030	85,223	25,667	6,149	45,284	53,084	241	29,918	1,167	6,719
.....1940 to 1944..dollars..	122,426	31,290	82,462	47,758	20,345	369	5,827	303	916
Cost of new drainage works.....Jan. 1, 1940 to Dec. 31, 1949..dollars..	36,540	12,609	24,980	943
.....1945 to 1949..dollars..	36,540	12,609	24,980	943
.....1940 to 1944..dollars..
Capital invested prior to 1940 ¹dollars..	1,015,666	391,737	1,410,794	262,943	6,044	1,422,462	952,782	96,737	329,042	38,466	143,975
Funds collected for drainage.....Jan. 1, 1940 to Dec. 31, 1949..dollars..	301,606	59,264	156,008	16,190	6,252	67,284	73,432	34,453	8,533
.....1945 to 1949..dollars..	128,775	30,495	56,860	16,190	6,089	30,590	33,999	30,346	4,250
.....1940 to 1944..dollars..	172,831	28,769	99,148	163	36,694	39,433	4,107	4,283
Outstanding indebtedness.....Dec. 31, 1949..dollars..	4,100	4,000	410	7,933
.....Dec. 31, 1939..dollars..	933	(2)	(2)	4,438	5,285
DRAINAGE WORKS											
Completed since Jan. 1, 1940.....open ditches..miles..	2	3	6	1
.....tile drains..miles..	4
.....levees and dikes..miles..	19
Completed prior to 1940 ¹open ditches..miles..	392.6	95.1	440.5	131.8	6.0	609.9	476.0	39.9	310.7	5.8	13.8
.....tile drains..miles..	281.6	5.7	471.7	16.7	0.3	400.4	251.0	0.5	90.8	10.6	39.3
.....levees and dikes..miles..	15.4	0.1	0.2

Item	Indiana—Con.										
	Franklin	Fulton	Gibson	Grant	Greene	Hamilton	Hancock	Hendricks	Henry	Howard	Huntington
LAND AREA											
Approximate land area.....acres..1950..	252,160	234,880	319,360	269,440	351,360	257,920	195,200	266,880	256,000	187,520	249,600
Land in drainage enterprises.....acres..1950..	9,216	219,110	240,000	224,398	131,979	180,642	137,856	96,205	220,288	171,136	182,400
.....1940..	7,538	206,428	168,649	235,970	63,569	168,026	128,568	78,897	213,418	157,266	190,816
FINANCIAL ITEMS											
Cost of construction and operation and maintenance.....Jan. 1, 1940 to Dec. 31, 1949..dollars..	1,705	386,176	31,102	203,421	122,534	167,630	53,624	42,147	21,800	93,372	214,874
.....1945 to 1949..dollars..	1,529	306,546	23,997	148,857	98,906	127,223	29,874	18,887	16,607	67,261	175,465
.....1940 to 1944..dollars..	176	63,686	7,105	54,564	23,628	40,407	23,750	23,260	5,193	26,111	39,409
Cost of new drainage works.....Jan. 1, 1940 to Dec. 31, 1949..dollars..	237,181	73,286	2,165	8,948	32,140
.....1945 to 1949..dollars..	237,181	58,595	2,165	8,900	32,140
.....1940 to 1944..dollars..	14,691	48
Capital invested prior to 1940 ¹dollars..	52,366	1,158,523	789,559	671,238	571,626	516,793	479,984	420,023	996,362	758,734	689,304
Funds collected for drainage.....Jan. 1, 1940 to Dec. 31, 1949..dollars..	2,503	347,362	30,393	181,211	123,409	79,572	20,546	163,245	40,518	32,512	151,440
.....1945 to 1949..dollars..	2,458	306,546	23,480	121,026	95,579	59,222	15,694	85,849	28,688	15,425	136,751
.....1940 to 1944..dollars..	45	40,816	6,913	60,185	27,830	20,350	4,852	77,396	11,830	17,087	14,689
Outstanding indebtedness.....Dec. 31, 1949..dollars..	(2)	6,345	14,220	1,384	28,997
.....Dec. 31, 1939..dollars..	20,910	5,832	(2)	9,801	9,136
DRAINAGE WORKS											
Completed since Jan. 1, 1940.....open ditches..miles..	106	10	1
.....tile drains..miles..	19
.....levees and dikes..miles..
Completed prior to 1940 ¹open ditches..miles..	1.2	377.0	275.9	576.1	221.9	240.3	195.8	241.9	311.5	254.5	468.6
.....tile drains..miles..	21.0	337.1	2.8	262.0	0.8	199.7	187.8	80.7	289.3	221.0	323.5
.....levees and dikes..miles..	13.5

¹From 1940 Census.

²Data are included only in State totals.

COUNTY-DRAIN STATES

County Table 1.—LAND IN DRAINAGE ENTERPRISES AND RELATED FINANCIAL ITEMS: CENSUSES OF DRAINAGE 1950 AND 1940—Continued

[Both censuses taken as of January 1]

Item	Indiana—Con.										
	Jackson	Jasper	Jay	Jennings	Johnson	Knox	Kosciusko	Lagrange	Lake	La Porte	Madison
LAND AREA											
Approximate land area.....acres..1950..	332,800	359,680	247,040	241,280	201,600	330,880	344,320	242,560	328,960	389,120	289,920
Land in drainage enterprises.....acres..1950..	168,192	340,301	243,778	4,352	70,912	196,380	305,421	181,813	158,057	203,184	226,944
.....1940..	119,980	326,901	237,110	4,002	65,085	158,847	319,669	157,082	167,619	182,119	215,788
FINANCIAL ITEMS											
Cost of construction and operation and maintenance.....Jan. 1, 1940 to Dec. 31, 1949..dollars..		92,475	249,157		64,465	217,217	265,489	88,543	4,275	35,178	271,713
.....1945 to 1949..dollars..		66,700	181,075		56,066	172,756	212,863	71,864	4,275	5,167	237,954
.....1940 to 1944..dollars..		25,775	68,082		8,399	44,461	52,626	16,679		30,011	33,759
Cost of new drainage works.....Jan. 1, 1940 to Dec. 31, 1949..dollars..								7,040			61,126
.....1945 to 1949..dollars..								7,040			59,476
.....1940 to 1944..dollars..											1,650
Capital invested prior to 1940 ¹dollars..	352,103	1,249,076	858,256	13,434	137,642	915,729	931,296	483,951	943,656	1,185,026	1,452,682
Funds collected for drainage.....Jan. 1, 1940 to Dec. 31, 1949..dollars..		32,334	200,918		28,793	192,504	248,053	75,577	30,997	54,071	222,544
.....1945 to 1949..dollars..		8,007	131,156		26,977	155,193	195,169	57,440	594	4,128	191,789
.....1940 to 1944..dollars..		24,327	69,762		1,816	37,311	52,884	18,137	30,403	49,943	30,755
Outstanding indebtedness.....Dec. 31, 1949..dollars..					36,622	20,912			637		1,185
.....Dec. 31, 1939..dollars..		8,355				(²)	7,908		2,071		22,443
DRAINAGE WORKS											
Completed since Jan. 1, 1940.....open ditches..miles..								4			11
.....tile drains..miles..								1			2
.....levees and dikes..miles..											
Completed prior to 1940 ¹open ditches..miles..	252.9	510.8	384.0	10.3	121.2	383.4	447.4	269.9	245.0	374.3	512.1
.....tile drains..miles..	1.1	209.5	198.1	0.2	56.7	17.2	415.0	134.5	41.5	11.0	346.8
.....levees and dikes..miles..						17.4			7.0		

Item	Indiana—Con.										
	Marion	Marshall	Miami	Mont-gonery	Morgan	Newton	Noble	Ohio ³	Owen	Parke	Perry ³
LAND AREA											
Approximate land area.....acres..1950..	257,280	284,160	243,200	324,480	259,840	264,320	262,400	55,680	250,240	288,640	245,760
Land in drainage enterprises.....acres..1950..	71,251	247,501	107,512	136,478	41,344	238,464	187,904	1,229	4,608	15,616	768
.....1940..	45,046	237,335	144,298	99,387	33,762	229,682	186,249	(²)	4,374	12,022	(²)
FINANCIAL ITEMS											
Cost of construction and operation and maintenance.....Jan. 1, 1940 to Dec. 31, 1949..dollars..	95,329	111,216	109,351	112,319	40,285	125,462	188,700	3,984	3,000	1,626	
.....1945 to 1949..dollars..	54,126	77,610	89,261	70,171	16,708	81,043	113,575	3,984	1,500	1,626	
.....1940 to 1944..dollars..	41,203	33,606	20,090	42,148	23,577	44,419	75,125		1,500		
Cost of new drainage works.....Jan. 1, 1940 to Dec. 31, 1949..dollars..	9,481						5,135				
.....1945 to 1949..dollars..	9,481						3,680				
.....1940 to 1944..dollars..							1,455				
Capital invested prior to 1940 ¹dollars..	169,197	611,771	817,308	478,304	268,836	895,889	1,131,804	(²)	40,989	216,417	(²)
Funds collected for drainage.....Jan. 1, 1940 to Dec. 31, 1949..dollars..	18,133	95,310	117,811	77,281	20,437	90,512	168,201	3,984		875	
.....1945 to 1949..dollars..	11,515	62,405	85,341	43,757	5,365	42,758	101,666	3,984		875	
.....1940 to 1944..dollars..	6,618	32,905	32,470	33,524	15,072	47,754	66,535			751	
Outstanding indebtedness.....Dec. 31, 1949..dollars..	12,534			2,682	886	305					(²)
.....Dec. 31, 1939..dollars..	(²)	2,436	(²)		4,246	56,556	29,077	(²)			
DRAINAGE WORKS											
Completed since Jan. 1, 1940.....open ditches..miles..	1							3			
.....tile drains..miles..	1										
.....levees and dikes..miles..											
Completed prior to 1940 ¹open ditches..miles..	148.5	416.0	412.4	148.7	77.3	378.3	429.7	(²)	12.3	31.7	(²)
.....tile drains..miles..	20.6	220.7	187.1	177.9	2.4	125.3	420.3			0.3	
.....levees and dikes..miles..	10.8									21.8	

Item	Indiana—Con.										
	Pike	Porter	Posey	Pulaski	Putnam	Randolph	Rush	St. Joseph	Scott	Shelby	Spencer
LAND AREA											
Approximate land area.....acres..1950..	214,400	272,000	264,960	277,120	313,600	292,480	261,760	298,880	123,520	261,760	253,440
Land in drainage enterprises.....acres..1950..	123,238	189,440	199,424	251,366	12,698	249,728	137,856	263,012	12,544	92,800	83,040
.....1940..	89,394	166,638	161,800	262,882	10,342	207,947	105,383	199,293	16,847	86,145	64,994
FINANCIAL ITEMS											
Cost of construction and operation and maintenance.....Jan. 1, 1940 to Dec. 31, 1949..dollars..	5,500	42,192	46,664	571,544	3,618	142,385	170,326	103,455	18,792	58,526	17,568
.....1945 to 1949..dollars..		35,742	34,904	487,511	1,845	104,557	147,875	88,090	17,132	46,379	12,543
.....1940 to 1944..dollars..	5,500	6,450	11,760	84,033	1,773	37,828	22,451	15,365	1,660	12,147	5,025
Cost of new drainage works.....Jan. 1, 1940 to Dec. 31, 1949..dollars..							41,809	12,058		9,856	
.....1945 to 1949..dollars..							29,554	71,268		9,856	
.....1940 to 1944..dollars..							12,255	12,058			
Capital invested prior to 1940 ¹dollars..	390,347	1,072,939	543,127	1,017,527	64,512	808,769	412,247	874,358	75,561	159,332	276,194
Funds collected for drainage.....Jan. 1, 1940 to Dec. 31, 1949..dollars..	5,800	12,594	31,240	448,048	995	150,974	117,652	72,880	10,315	52,982	16,568
.....1945 to 1949..dollars..	3,400	6,069	30,353	318,927		112,035	104,287	72,880	9,876	43,378	11,543
.....1940 to 1944..dollars..	2,400	6,525	887	129,121	995	38,939	13,365		439	9,604	5,025
Outstanding indebtedness.....Dec. 31, 1949..dollars..	1,500			2,466					10,080		
.....Dec. 31, 1939..dollars..	(²)	6,034					12,052	2,049	(²)		
DRAINAGE WORKS											
Completed since Jan. 1, 1940.....open ditches..miles..							12	11	5		2
.....tile drains..miles..							3	4	1		
.....levees and dikes..miles..											
Completed prior to 1940 ¹open ditches..miles..	61.1	346.2	214.8	697.0	11.7	314.0	195.2	460.2	38.3	200.7	186.7
.....tile drains..miles..	0.2	108.9	0.2	182.7	10.3	390.9	182.4	71.5		63.3	10.5
.....levees and dikes..miles..	0.3					0.4					

³Not shown separately in 1940.

²Data are included only in State totals.

¹From 1940 Census.

DRAINAGE OF AGRICULTURAL LANDS

County Table 1.—LAND IN DRAINAGE ENTERPRISES AND RELATED FINANCIAL ITEMS: CENSUSES OF DRAINAGE 1950 AND 1940—Continued

[Both censuses taken as of January 1]

Item	Indiana—Con.										
	Starke	Steuben	Sullivan	Tipp- cance	Tipton	Union	Vander- burgh	Vermil- lion	Vigo	Wabash	Warren
LAND AREA											
Approximate land area.....acres..1950..	199,040	198,400	292,480	320,640	167,040	107,520	154,240	168,320	265,600	269,440	235,520
Land in drainage enterprises.....acres..1950..	190,065	142,336	39,456	147,584	167,040	3,789	64,336	7,296	31,962	172,928	76,800
.....1940..	184,280	150,541	39,726	121,861	162,984	4,557	57,443	5,397	29,583	130,964	51,141
FINANCIAL ITEMS											
Cost of construction and operation and maintenance.....Jan. 1, 1940 to Dec. 31, 1949..dollars..	226,782	143,767	117,144	70,425	112,342	59,725	31,229	22,234	167,618	34,753
.....1945 to 1949..dollars..	191,552	103,422	72,477	69,069	88,592	46,555	13,267	13,557	79,401	28,265
.....1940 to 1944..dollars..	35,230	40,345	44,667	1,356	23,750	13,170	17,962	8,677	88,217	6,488
Cost of new drainage works.....Jan. 1, 1940 to Dec. 31, 1949..dollars..	72,093	3,189	22,948
.....1945 to 1949..dollars..	62,823	1,191	22,948
.....1940 to 1944..dollars..	9,270	1,998
Capital invested prior to 1940 ¹dollars..	542,338	420,298	418,621	801,063	1,136,139	40,960	100,080	15,498	330,674	431,909	279,761
Funds collected for drainage.....Jan. 1, 1940 to Dec. 31, 1949..dollars..	217,565	104,117	117,745	2,394	96,502	1,210	28,626	21,859	107,482	41,771
.....1945 to 1949..dollars..	189,922	74,314	72,595	571	82,566	731	13,113	13,182	44,380	27,977
.....1940 to 1944..dollars..	27,643	29,803	45,150	1,823	13,936	479	15,513	8,677	63,102	13,794
Outstanding indebtedness.....Dec. 31, 1949..dollars..	737	5,950	3,775	1,411
.....Dec. 31, 1939..dollars..	(²)	6,987	(²)	2,306
DRAINAGE WORKS											
Completed since Jan. 1, 1940.....open ditches..miles..	6	4	8
.....tile drains..miles..	5	3
.....levees and dikes..miles..
Completed prior to 1940 ¹open ditches..miles..	560.2	361.6	88.9	132.0	533.5	0.9	100.3	13.9	79.7	194.8	46.5
.....tile drains..miles..	13.7	168.7	77.8	369.4	226.3	19.5	2.0	3.4	4.7	142.9	57.7
.....levees and dikes..miles..	22.0	28.9

Item	Indiana—Con.						Iowa				
	Warrick	Washing- ton	Wayne	Wells	White	Whitley	The State	Adair ³	Adams	Alla- makee	Appa- noose ³
LAND AREA											
Approximate land area.....acres..1950..	250,240	330,240	259,200	235,520	318,080	215,040	35,830,400	364,160	272,640	408,960	334,720
Land in drainage enterprises.....acres..1950..	143,104	12,544	23,885	206,029	264,064	206,251	6,734,863	3,328	13,751	9,355	14,336
.....1940..	111,320	12,195	20,301	203,966	248,282	197,012	6,164,344	(²)	11,885	9,860	(²)
FINANCIAL ITEMS											
Cost of construction and operation and maintenance.....Jan. 1, 1940 to Dec. 31, 1949..dollars..	32,075	5,564	985	235,544	30,504	478,708	13,302,757	1,356	39,427	24,694
.....1945 to 1949..dollars..	29,996	1,175	985	197,970	19,032	333,125	9,169,570	613	38,721	6,205
.....1940 to 1944..dollars..	2,079	4,389	37,574	11,472	145,583	4,133,187	743	706	18,489
Cost of new drainage works.....Jan. 1, 1940 to Dec. 31, 1949..dollars..	2,143,433	37,134
.....1945 to 1949..dollars..	2,050,365	37,134
.....1940 to 1944..dollars..	93,068
Capital invested prior to 1940 ¹dollars..	493,857	105,390	67,385	1,451,549	1,368,267	1,007,064	75,374,497	(²)	166,098	134,077	(²)
Funds collected for drainage.....Jan. 1, 1940 to Dec. 31, 1949..dollars..	17,545	1,399	144,793	12,503	448,919	13,703,726	3,284	37,828	24,262
.....1945 to 1949..dollars..	17,545	1,399	120,630	8,230	319,189	9,572,838	2,923	37,157	6,041
.....1940 to 1944..dollars..	24,163	4,273	129,730	4,130,888	361	67.1	18,221
Outstanding indebtedness.....Dec. 31, 1949..dollars..	12,358	(²)	(²)	2,498,927	8,056
.....Dec. 31, 1939..dollars..	13,891	(²)	(²)	1,286,932	(²)	(²)	(²)	(²)
DRAINAGE WORKS											
Completed since Jan. 1, 1940.....open ditches..miles..	203	4
.....tile drains..miles..	165
.....levees and dikes..miles..	35
Completed prior to 1940 ¹open ditches..miles..	187.6	16.3	40.8	843.6	808.5	381.5	5,189.7	(²)	21.6	21.5	(²)
.....tile drains..miles..	12.5	356.0	318.2	404.4	12,873.2	(²)	(²)
.....levees and dikes..miles..	456.8	(²)	(²)

Item	Iowa—Con.										
	Audubon	Benton ³	Black Hawk	Boone	Bremer	Buchanan ³	Buena Vista	Butler ³	Calhoun	Carroll	Cass
LAND AREA											
Approximate land area.....acres..1950..	286,720	459,520	362,880	366,720	280,960	364,160	366,720	372,480	366,080	367,360	357,760
Land in drainage enterprises.....acres..1950..	15,622	410	10,322	144,691	8,078	3,277	237,450	819	285,471	117,962	26,705
.....1940..	15,020	(²)	10,278	135,583	8,129	(²)	241,020	(²)	273,767	104,605	27,460
FINANCIAL ITEMS											
Cost of construction and operation and maintenance.....Jan. 1, 1940 to Dec. 31, 1949..dollars..	55,175	9,025	154,018	1,102	151,655	236,069	161,476	23,914
.....1945 to 1949..dollars..	20,701	7,622	119,608	858	124,720	148,140	122,260	14,197
.....1940 to 1944..dollars..	34,474	1,403	34,410	244	26,935	87,929	39,216	9,717
Cost of new drainage works.....Jan. 1, 1940 to Dec. 31, 1949..dollars..	10,039	98,194	4,736	24,531	39,588
.....1945 to 1949..dollars..	10,039	83,500	4,736	17,006	32,403
.....1940 to 1944..dollars..	14,694	7,525	7,185
Capital invested prior to 1940 ¹dollars..	234,026	(²)	188,793	2,115,391	80,605	(²)	1,708,735	(²)	2,169,492	931,634	443,144
Funds collected for drainage.....Jan. 1, 1940 to Dec. 31, 1949..dollars..	65,349	6,831	153,040	1,073	193,923	262,018	169,573	24,591
.....1945 to 1949..dollars..	32,486	6,299	114,435	1,073	168,061	161,909	87,068	14,645
.....1940 to 1944..dollars..	32,863	532	38,605	25,862	100,109	82,505	9,946
Outstanding indebtedness.....Dec. 31, 1949..dollars..	22,792	2,406	28,518
.....Dec. 31, 1939..dollars..	(²)	(²)	80	(²)	(²)
DRAINAGE WORKS											
Completed since Jan. 1, 1940.....open ditches..miles..	1	3	1	3
.....tile drains..miles..	14	2	7	3
.....levees and dikes..miles..
Completed prior to 1940 ¹open ditches..miles..	39.5	(²)	1.0	13.3	(²)	94.6	(²)	165.6	46.8	57.2
.....tile drains..miles..	(²)	47.0	571.2	20.5	(²)	452.5	(²)	483.1	261.8	0.2
.....levees and dikes..miles..	(²)	(²)	(²)

¹From 1940 Census.

²Data are included only in State totals.

³Not shown separately in 1940.

COUNTY-DRAIN STATES

County Table 1.—LAND IN DRAINAGE ENTERPRISES AND RELATED FINANCIAL ITEMS: CENSUSES OF DRAINAGE 1950 AND 1940—Continued

[Both censuses taken as of January 1]

Item	Iowa—Con.										
	Cedar ³	Cerro Gordo	Clay	Clinton	Crawford	Dallas	Davis	Decatur	Delaware	Des Moines	Dickinson
LAND AREA											
Approximate land area.....acres..1950..	374,400	368,640	365,440	444,800	458,240	382,080	325,760	339,200	366,720	261,760	244,480
Land in drainage enterprises.....acres..1950..	10,354	124,974	132,987	82,176	40,632	90,588	32,131	19,001	1,575	32,768	126,979
.....1940..	(²)	115,589	134,688	77,384	13,272	79,992	23,465	13,277	34,410	114,667
FINANCIAL ITEMS											
Cost of construction and operation and maintenance.....Jan. 1, 1940 to Dec. 31, 1949..dollars..	445	97,160	92,515	47,306	418,305	117,339	8,343	65,879	853,724	63,631
.....1945 to 1949..dollars..	325	83,338	82,951	28,540	409,132	102,737	8,343	58,417	501,885	50,570
.....1940 to 1944..dollars..	120	13,822	9,564	18,766	9,173	14,602	7,462	351,839	13,061
Cost of new drainage works.....Jan. 1, 1940 to Dec. 31, 1949..dollars..	58,965	55,215	383,156	62,876	6,432	45,150	12,730
.....1945 to 1949..dollars..	58,965	51,515	383,156	62,871	6,432	45,150	11,205
.....1940 to 1944..dollars..	3,700	5	1,525
Capital invested prior to 1940 ¹dollars..	(²)	2,502,754	1,642,551	642,035	311,128	984,783	229,415	118,100	668,587	1,922,320
Funds collected for drainage.....Jan. 1, 1940 to Dec. 31, 1949..dollars..	1,227	104,591	109,183	49,514	601,192	105,022	7,394	32,425	852,403	66,687
.....1945 to 1949..dollars..	1,227	88,776	102,722	27,803	587,767	90,310	7,394	23,467	502,761	53,344
.....1940 to 1944..dollars..	15,815	6,461	21,711	13,425	14,712	8,958	349,622	13,343
Outstanding indebtedness.....Dec. 31, 1949..dollars..	(²)	19,988	6,779	3,111	214,867	9,087	52,500	155,263	3,799
.....Dec. 31, 1939..dollars..	(²)	(²)	(²)	(²)	(²)	51,403
DRAINAGE WORKS											
Completed since Jan. 1, 1940.....open ditches..miles..	1	4	48	1	2	9	1
.....tile drains..miles..	10	4	8	3
.....levees and dikes..miles..
Completed prior to 1940 ¹open ditches..miles..	(²)	16.8	46.8	104.0	35.6	26.8	56.8	21.3	51.0	52.1
.....tile drains..miles..	(²)	545.1	448.8	44.5	200.9	8.0	463.3
.....levees and dikes..miles..	(²)	1.5

Item	Iowa—Con.										
	Dubuque ³	Emmet	Fayette	Floyd	Franklin	Fremont	Greene	Grundy	Guthrie	Hamilton	Hancock
LAND AREA											
Approximate land area.....acres..1950..	389,120	252,800	465,920	321,920	375,040	328,960	364,160	320,640	381,440	369,280	364,800
Land in drainage enterprises.....acres..1950..	1,475	184,650	3,113	39,538	159,517	111,446	153,139	10,748	15,104	261,348	306,318
.....1940..	(²)	180,636	3,320	37,858	157,043	93,978	174,472	8,906	14,990	227,089	277,695
FINANCIAL ITEMS											
Cost of construction and operation and maintenance.....Jan. 1, 1940 to Dec. 31, 1949..dollars..	4,466	77,611	652	9,421	138,933	674,553	165,958	1,279	7,517	305,554	625,011
.....1945 to 1949..dollars..	47,986	611	5,640	98,340	523,204	118,815	884	5,711	240,659	475,240
.....1940 to 1944..dollars..	4,466	29,625	41	3,781	40,593	151,349	47,143	395	1,806	64,895	149,771
Cost of new drainage works.....Jan. 1, 1940 to Dec. 31, 1949..dollars..	34,720	366,823	20,420	80,484	146,669
.....1945 to 1949..dollars..	34,720	366,823	20,420	69,610	146,669
.....1940 to 1944..dollars..	10,874
Capital invested prior to 1940 ¹dollars..	(²)	2,817,118	85,162	736,473	2,149,472	1,160,761	2,595,475	69,406	219,540	2,970,997	2,867,560
Funds collected for drainage.....Jan. 1, 1940 to Dec. 31, 1949..dollars..	7,419	70,691	6,716	139,641	716,127	138,445	2,110	9,762	317,060	609,011
.....1945 to 1949..dollars..	675	41,422	3,449	103,894	566,202	95,789	1,011	7,541	250,748	500,673
.....1940 to 1944..dollars..	6,744	29,269	3,267	35,747	149,925	42,656	1,099	2,221	66,312	108,338
Outstanding indebtedness.....Dec. 31, 1949..dollars..	(²)	20,706	73,360	25,959	141,656	32,357
.....Dec. 31, 1939..dollars..	(²)	(²)	(²)	1,873	(²)
DRAINAGE WORKS											
Completed since Jan. 1, 1940.....open ditches..miles..	1	21	5	11	14
.....tile drains..miles..	6	9	6	10
.....levees and dikes..miles..	25
Completed prior to 1940 ¹open ditches..miles..	(²)	101.1	2.8	33.8	145.3	34.7	0.8	152.7	205.4
.....tile drains..miles..	(²)	609.1	12.0	160.7	465.0	588.4	27.3	45.3	606.3	478.3
.....levees and dikes..miles..	(²)	2.0	9.2

Item	Iowa—Con.										
	Hardin	Harrison	Howard	Humboldt	Iowa	Jackson ³	Jasper	Jefferson	Johnson	Jones ³	Kosuth
LAND AREA											
Approximate land area.....acres..1950..	367,360	445,440	301,440	278,400	373,760	412,160	471,040	279,040	396,800	374,400	626,560
Land in drainage enterprises.....acres..1950..	150,032	139,379	7,737	203,290	19,169	8,448	66,816	9,339	13,824	1,311	475,136
.....1940..	149,378	133,572	6,977	192,700	18,254	(²)	46,027	8,922	8,278	(²)	469,524
FINANCIAL ITEMS											
Cost of construction and operation and maintenance.....Jan. 1, 1940 to Dec. 31, 1949..dollars..	144,993	1,438,809	2,112	358,713	1,872	136,344	54,252	21,143	3,322	518,689
.....1945 to 1949..dollars..	113,866	808,723	1,569	313,441	1,667	77,027	12,030	2,487	361,367
.....1940 to 1944..dollars..	31,127	630,086	543	45,272	205	59,317	42,222	21,143	835	157,322
Cost of new drainage works.....Jan. 1, 1940 to Dec. 31, 1949..dollars..	61,129	5,674	28,691
.....1945 to 1949..dollars..	60,101	5,674	23,801
.....1940 to 1944..dollars..	1,028	4,890
Capital invested prior to 1940 ¹dollars..	1,303,101	1,152,238	97,678	1,911,470	336,444	(²)	400,476	101,411	33,667	(²)	7,071,326
Funds collected for drainage.....Jan. 1, 1940 to Dec. 31, 1949..dollars..	139,075	1,372,270	2,328	323,846	125,481	33,588	21,143	2,328	503,170
.....1945 to 1949..dollars..	107,953	722,126	1,444	276,099	52,230	8,239	1,211	340,494
.....1940 to 1944..dollars..	31,122	650,144	884	47,747	73,251	25,349	21,143	1,117	162,676
Outstanding indebtedness.....Dec. 31, 1949..dollars..	10,620	46,464	54,372	3,182	4,000	13,500	114,841
.....Dec. 31, 1939..dollars..	166,772	30,426	(²)	(²)	(²)	(²)	(²)	5,795
DRAINAGE WORKS											
Completed since Jan. 1, 1940.....open ditches..miles..	1	2	2
.....tile drains..miles..	10	2
.....levees and dikes..miles..	8
Completed prior to 1940 ¹open ditches..miles..	41.0	225.9	1.0	152.7	28.0	(²)	69.0	13.1	15.5	(²)	355.4
.....tile drains..miles..	300.5	12.4	22.8	361.1	3.0	(²)	2.6	(²)	1,439.1
.....levees and dikes..miles..	5.0	6.0	(²)	6.6	(²)

¹From 1940 Census.

²Data are included only in State totals.

³Not shown separately in 1940.

DRAINAGE OF AGRICULTURAL LANDS

County Table 1.—LAND IN DRAINAGE ENTERPRISES AND RELATED FINANCIAL ITEMS: CENSUSES OF DRAINAGE 1950 AND 1940—Continued

[Both censuses taken as of January 1]

Item	Iowa—Con.										
	Lee ³	Linn	Louisa	Madison	Mahaska	Marion	Marshall	Mills	Mitchell	Monona	Montgomery
LAND AREA											
Approximate land area.....acres..1950..	334,080	456,320	257,920	361,600	366,080	363,520	367,360	273,920	298,880	439,040	270,080
Land in drainage enterprises.....acres..1950..	13,824	4,864	52,330	1,040	37,519	22,300	20,480	74,411	12,579	155,566	23,405
.....1940..	(²)	4,367	45,468	1,840	16,325	22,620	19,230	52,084	12,937	152,296	23,192
FINANCIAL ITEMS											
Cost of construction and operation and maintenance.....Jan. 1, 1940 to Dec. 31, 1949..dollars..	310,354	884	521,642	6,096	14,019	22,374	311,593	14,774	1,013,262	635
.....1945 to 1949..dollars..	105,217	587	340,261	373	671	244	226,759	465	688,822	304
.....1940 to 1944..dollars..	205,137	297	181,381	5,723	13,348	22,130	84,834	14,309	324,440	331
Cost of new drainage works.....Jan. 1, 1940 to Dec. 31, 1949..dollars..	11,000	14,336
.....1945 to 1949..dollars..	11,000	14,336
.....1940 to 1944..dollars..	(²)	60,724	521,297	32,664	194,620	170,775	276,116	452,588	329,562	1,637,043	346,518
Capital invested prior to 1940 ¹dollars..	(²)
Funds collected for drainage.....Jan. 1, 1940 to Dec. 31, 1949..dollars..	318,018	1,240	495,239	5,186	14,315	21,844	312,644	22,065	894,470
.....1945 to 1949..dollars..	106,198	503	308,342	484	500	33	232,941	507	634,384
.....1940 to 1944..dollars..	211,820	737	186,897	4,702	13,715	21,811	79,703	21,558	260,086
Outstanding indebtedness.....Dec. 31, 1949..dollars..	39,591	173,367	6,000	7	54,000	330,739
.....Dec. 31, 1939..dollars..	(²)	105,831	(²)	(²)	(²)	(²)
DRAINAGE WORKS											
Completed since Jan. 1, 1940.....open ditches..miles..	11	3
.....tile drains..miles..
.....levees and dikes..miles..
Completed prior to 1940 ¹open ditches..miles..	(²)	68.9	4.8	24.8	35.4	15.5	82.6	2.3	247.4	52.5
.....tile drains..miles..	(²)	19.0	6.0	4.0	22.4	84.3	15.4
.....levees and dikes..miles..	(²)	33.0	0.5	14.2	10.9

Item	Iowa—Con.										
	Muscatine	O'Brien	Osceola	Page	Palo Alto	Plymouth	Pocahontas	Polk	Pottawattamie	Poweshiek	Ringgold
LAND AREA											
Approximate land area.....acres..1950..	280,960	368,000	254,720	342,400	359,040	552,320	371,200	380,160	605,440	376,960	344,320
Land in drainage enterprises.....acres..1950..	31,523	20,019	83,680	49,152	235,593	6,502	306,460	62,796	102,440	17,749	16,043
.....1940..	24,932	16,575	70,899	47,302	217,539	6,000	281,741	42,344	92,844	10,859	21,725
FINANCIAL ITEMS											
Cost of construction and operation and maintenance.....Jan. 1, 1940 to Dec. 31, 1949..dollars..	181,794	5,233	44,272	48,472	167,203	11,061	443,614	214,390	489,166
.....1945 to 1949..dollars..	123,203	2,330	17,270	24,707	91,368	8,823	301,019	181,266	330,480
.....1940 to 1944..dollars..	58,591	2,903	27,002	23,765	75,835	2,238	142,595	33,124	158,686
Cost of new drainage works.....Jan. 1, 1940 to Dec. 31, 1949..dollars..	1,966	20,837	77,400	53,818	56,290
.....1945 to 1949..dollars..	1,966	10,051	58,272	53,818	56,290
.....1940 to 1944..dollars..	10,786	19,128
Capital invested prior to 1940 ¹dollars..	241,986	157,694	1,098,093	570,219	1,911,382	79,318	2,939,855	820,442	1,401,865	230,201	316,296
Funds collected for drainage.....Jan. 1, 1940 to Dec. 31, 1949..dollars..	186,328	2,092	41,873	41,033	191,192	10,117	453,674	222,659	515,755	533
.....1945 to 1949..dollars..	128,552	1,967	12,584	21,565	109,981	7,362	319,714	189,860	361,640
.....1940 to 1944..dollars..	57,776	125	29,289	19,468	81,211	2,755	133,960	32,799	154,115	533
Outstanding indebtedness.....Dec. 31, 1949..dollars..	4,414	11,962	364	4,349	279,944	18,560	125,208
.....Dec. 31, 1939..dollars..	32,291	(²)	6,151	49,117	43,677	50,265	(²)
DRAINAGE WORKS											
Completed since Jan. 1, 1940.....open ditches..miles..	1	6	1	9
.....tile drains..miles..	1	5	19	3
.....levees and dikes..miles..
Completed prior to 1940 ¹open ditches..miles..	52.0	7.7	51.9	97.4	156.6	8.1	254.1	46.8	198.6	27.6	44.2
.....tile drains..miles..	31.8	285.2	504.4	484.0	54.6	2.8
.....levees and dikes..miles..	3.0	0.1	30.8	284.9

Item	Iowa—Con.										
	Sac	Scott	Shelby	Story	Tama	Taylor	Van Buren	Wapello	Warren	Washington	Wayne ³
LAND AREA											
Approximate land area.....acres..1950..	369,920	289,920	375,680	363,520	460,800	337,920	311,680	279,680	366,080	363,520	340,480
Land in drainage enterprises.....acres..1950..	117,842	1,638	43,090	168,757	2,611	14,757	13,198	9,696	48,469	3,755	13,000
.....1940..	105,874	2,020	40,215	154,036	2,591	13,925	10,739	7,689	42,946	4,064	(²)
FINANCIAL ITEMS											
Cost of construction and operation and maintenance.....Jan. 1, 1940 to Dec. 31, 1949..dollars..	104,865	5,868	1,119	155,320	3,246	4,092	16,554	12,561	3,155	7,401	12,528
.....1945 to 1949..dollars..	67,063	553	148	96,385	3,246	16,554	9,126	744
.....1940 to 1944..dollars..	37,802	5,315	971	58,935	4,092	3,435	2,411	7,401	12,528
Cost of new drainage works.....Jan. 1, 1940 to Dec. 31, 1949..dollars..	24,248	100	60,709	4,813
.....1945 to 1949..dollars..	24,248	100	60,709	4,813
.....1940 to 1944..dollars..
Capital invested prior to 1940 ¹dollars..	1,133,785	19,595	668,135	1,720,595	19,512	173,251	99,498	96,904	559,887	90,460	(²)
Funds collected for drainage.....Jan. 1, 1940 to Dec. 31, 1949..dollars..	107,822	5,718	261	155,502	3,396	3,358	14,061	11,161	3,038	5,512	13,166
.....1945 to 1949..dollars..	75,227	551	104,421	3,396	14,061	9,450	105	657
.....1940 to 1944..dollars..	32,595	5,167	261	51,081	3,358	1,711	3,038	5,407	12,509
Outstanding indebtedness.....Dec. 31, 1949..dollars..	5,386	975
.....Dec. 31, 1939..dollars..	(²)	7,500	9,238	(²)
DRAINAGE WORKS											
Completed since Jan. 1, 1940.....open ditches..miles..	3	1	6	2
.....tile drains..miles..	2	8
.....levees and dikes..miles..
Completed prior to 1940 ¹open ditches..miles..	56.8	2.5	88.4	66.2	2.0	24.0	24.3	14.1	73.2	5.4	(²)
.....tile drains..miles..	207.0	0.9	403.5	2.5	7.3	(²)
.....levees and dikes..miles..	(²)

¹From 1940 Census.

²Data are included only in State totals.

³Not shown separately in 1940.

COUNTY-DRAIN STATES

County Table 1.—LAND IN DRAINAGE ENTERPRISES AND RELATED FINANCIAL ITEMS: CENSUSES OF DRAINAGE 1950 AND 1940—Continued

[Both censuses taken as of January 1]

Item	Iowa—Con.					Kentucky					
	Webster	Winnebago	Woodbury	Worth	Wright	The State	Butler ³	Daviess	Fulton	Graves	Hancock
LAND AREA											
Approximate land area.....acres..1950..	459,520	257,280	554,240	256,640	369,280	25,669,760	283,520	298,240	131,200	358,400	119,680
Land in drainage enterprises.....acres..1950..	319,318	209,818	101,253	124,647	265,120	959,892	6,720	203,200	384	16,335	33,280
.....1940..	279,263	137,937	92,620	116,011	256,949	465,270	(²)	115,429	379	16,649	14,856
FINANCIAL ITEMS											
Cost of construction and operation and maintenance.....Jan. 1, 1940 to Dec. 31, 1949..dollars..	546,754	466,004	530,028	124,544	174,118	711,162	233,888	350	23,290
.....1945 to 1949..dollars..	478,440	410,476	306,862	108,322	88,332	440,253	154,058	175	11,645
.....1940 to 1944..dollars..	68,314	55,528	223,166	16,222	85,786	270,909	79,830	175	11,645
Cost of new drainage works.....Jan. 1, 1940 to Dec. 31, 1949..dollars..	31,349	142,672	60,539	44,832	8,941
.....1945 to 1949..dollars..	19,621	142,672	60,539	31,167	8,941
.....1940 to 1944..dollars..	11,728	13,665
Capital invested prior to 1940 ¹dollars..	3,266,924	1,955,115	762,554	1,457,836	3,016,515	4,947,994	(²)	1,418,069	13,737	378,558	215,240
Funds collected for drainage.....Jan. 1, 1940 to Dec. 31, 1949..dollars..	674,988	694,811	535,576	134,321	179,137	801,518	448	253,013	80	23,290
.....1945 to 1949..dollars..	607,727	621,057	289,273	120,932	89,876	481,950	448	159,204	40	11,645
.....1940 to 1944..dollars..	67,261	73,754	246,303	13,389	89,261	319,568	93,809	40	11,645
Outstanding indebtedness.....Dec. 31, 1949..dollars..	287,581	36,600	20,963	30,734	58,270	15,000	3,851	27,000
.....Dec. 31, 1939..dollars..	28,672	(²)	42,507	(²)	758,606	(²)	2,545	3,087	157,956	(²)
DRAINAGE WORKS											
Completed since Jan. 1, 1940.....open ditches..miles..	1	.16	8	22	3
.....tile drains..miles..	3	.16	14	1
.....levees and dikes..miles..
Completed prior to 1940 ¹open ditches..miles..	256.8	143.0	182.2	72.8	156.0	1,231.8	(²)	457.1	3.0	32.3	58.3
.....tile drains..miles..	621.1	482.9	8.3	394.1	532.3	2.0	2.0
.....levees and dikes..miles..	0.1
Kentucky—Con.											
Item	Henderson	Hickman ³	Hopkins	Jefferson	McCracken ³	McLean	Marshall ³	Muhlenberg	Ohio	Spencer ³	Union
LAND AREA											
Approximate land area.....acres..1950..	281,600	158,720	355,200	240,000	160,640	164,480	214,400	308,480	381,440	123,520	219,520
Land in drainage enterprises.....acres..1950..	101,376	7,680	16,256	99,264	1,773	58,432	1,024	59,457	65,856	1,792	166,116
.....1940..	37,959	(²)	9,356	69,000	32,759	(²)	18,715	21,673	(²)	49,664
FINANCIAL ITEMS											
Cost of construction and operation and maintenance.....Jan. 1, 1940 to Dec. 31, 1949..dollars..	18,825	5,450	157,496	10,816	15,986	1,450	3,000	30,734	5,697	153,970
.....1945 to 1949..dollars..	14,397	2,725	74,499	10,816	10,611	725	1,500	21,037	176	87,679
.....1940 to 1944..dollars..	4,428	2,725	82,997	5,375	725	1,500	9,697	5,521	66,291
Cost of new drainage works.....Jan. 1, 1940 to Dec. 31, 1949..dollars..	10,816	4,500	3,400	17,175
.....1945 to 1949..dollars..	10,816	4,500	6,910
.....1940 to 1944..dollars..	3,400	10,265
Capital invested prior to 1940 ¹dollars..	193,237	(²)	31,400	600,000	(²)	447,746	(²)	183,939	251,393	(²)	310,004
Funds collected for drainage.....Jan. 1, 1940 to Dec. 31, 1949..dollars..	12,237	34,481	157,496	10,816	20,556	1,450	28,755	3,400	199,444
.....1945 to 1949..dollars..	8,430	16,769	74,499	10,816	12,643	725	19,236	111,443
.....1940 to 1944..dollars..	3,807	17,712	82,997	7,913	725	9,519	3,400	88,001
Outstanding indebtedness.....Dec. 31, 1949..dollars..	1,119	9,000	(²)
.....Dec. 31, 1939..dollars..	(²)	(²)	(²)	116,353	(²)	(²)	17,837	(²)	750
DRAINAGE WORKS											
Completed since Jan. 1, 1940.....open ditches..miles..	5	7	7
.....tile drains..miles..	1
.....levees and dikes..miles..
Completed prior to 1940 ¹open ditches..miles..	73.2	(²)	12.0	77.0	(²)	137.6	(²)	55.4	63.5	(²)	114.0
.....tile drains..miles..
.....levees and dikes..miles..
Kentucky—Con.											
Item	Warren	Webster	The State	Alcona ³	Allegan	Alpena	Arenac	Barry	Bay	Berrien	Branch
LAND AREA											
Approximate land area.....acres..1950..	349,440	216,960	36,494,080	433,280	530,560	363,520	235,520	351,360	285,440	371,200	323,840
Land in drainage enterprises.....acres..1950..	1,344	119,603	10,194,439	4,520	238,017	40,525	171,868	159,252	253,184	152,640	219,424
.....1940..	43,458	8,978,386	(²)	286,951	6,960	145,399	115,767	225,775	156,795	143,160
FINANCIAL ITEMS											
Cost of construction and operation and maintenance.....Jan. 1, 1940 to Dec. 31, 1949..dollars..	50,210	20,235,636	122	226,209	14,143	80,256	112,629	342,738	459,495	121,174
.....1945 to 1949..dollars..	50,210	12,905,996	122	120,702	8,587	37,213	79,107	258,610	294,362	87,900
.....1940 to 1944..dollars..	7,329,640	105,507	5,556	43,043	33,522	84,128	165,133	33,274
Cost of new drainage works.....Jan. 1, 1940 to Dec. 31, 1949..dollars..	2,556,472	30,228	23,548	98,323	8,609
.....1945 to 1949..dollars..	1,952,914	20,252	23,548	75,667	8,609
.....1940 to 1944..dollars..	603,558	9,976	22,656
Capital invested prior to 1940 ¹dollars..	225,087	40,412,251	(²)	722,361	6,800	791,832	276,433	981,807	766,502	551,680
Funds collected for drainage.....Jan. 1, 1940 to Dec. 31, 1949..dollars..	56,052	21,324,715	216,712	12,481	75,648	88,898	370,870	448,110	114,281
.....1945 to 1949..dollars..	56,052	13,120,920	117,419	9,281	37,856	56,852	271,143	290,803	75,481
.....1940 to 1944..dollars..	8,203,795	99,293	3,200	37,792	32,046	99,727	157,307	38,800
Outstanding indebtedness.....Dec. 31, 1949..dollars..	2,300	2,476,509	24,090	5,200	22,922	34,895	55,985	13,168
.....Dec. 31, 1939..dollars..	(²)	809,579	802	53,625	9,140	12,941	9,804	2,746
DRAINAGE WORKS											
Completed since Jan. 1, 1940.....open ditches..miles..	554	10	10	54	6
.....tile drains..miles..	145	1
.....levees and dikes..miles..
Completed prior to 1940 ¹open ditches..miles..	75.8	19,608.6	(²)	592.4	13.0	287.6	141.8	630.9	283.0	295.9
.....tile drains..miles..	3,229.5	25.4	0.7	68.7	3.8	139.2	93.3
.....levees and dikes..miles..	13.6	0.1	2.8	0.1

¹From 1940 Census.

²Data are included only in State totals.

³Not shown separately in 1940.

COUNTY-DRAIN STATES

County Table 1.—LAND IN DRAINAGE ENTERPRISES AND RELATED FINANCIAL ITEMS: CENSUSES OF DRAINAGE 1950 AND 1940—Continued

[Both censuses taken as of January 1]

Item	Michigan—Con.											
	Osceola	Ottawa	Presque Isle	Roscommon	Saginaw	St. Clair	St. Joseph	Sanilac	Shiawassee	Tuscola	Van Buren	
LAND AREA												
Approximate land area.....acres..1950..	371,840	360,960	418,560	333,440	519,680	473,600	325,120	615,040	345,600	522,240	388,460	
Land in drainage enterprises.....acres..1950..	41,007	190,722	1,820	14,549	459,968	242,127	73,159	480,889	278,112	421,373	190,022	
.....1940..	46,240	190,587	1,800	12,220	366,116	234,481	29,966	439,293	268,263	350,716	183,815	
FINANCIAL ITEMS												
Cost of construction and operation and maintenance.....Jan. 1, 1940 to Dec. 31, 1949..dollars..		168,581		305	844,966	365,265	47,255	693,764	546,272	847,226	262,939	
.....1945 to 1949..dollars..		93,749		125	635,933	211,159	30,609	426,364	352,042	564,382	196,210	
.....1940 to 1944..dollars..		74,832		180	209,033	154,106	16,646	267,400	194,230	282,844	66,729	
Cost of new drainage works.....Jan. 1, 1940 to Dec. 31, 1949..dollars..		2,487			102,217	27,044	11,623	23,600	65,620	214,093	29,218	
.....1945 to 1949..dollars..		1,383			70,532	25,271	11,623	23,600	31,231	166,083	24,240	
.....1940 to 1944..dollars..		1,104			31,685	1,773			34,389	48,010	4,978	
Capital invested prior to 1940 ¹dollars..	79,704	395,153	3,000	12,588	2,439,687	781,486	188,693	2,578,359	1,389,448	2,183,911	500,111	
Funds collected for drainage.....Jan. 1, 1940 to Dec. 31, 1949..dollars..	104	181,948		134	985,296	350,737	46,106	632,084	601,933	819,214	298,311	
.....1945 to 1949..dollars..		7,683		10	760,419	216,147	30,884	358,569	385,144	560,674	227,599	
.....1940 to 1944..dollars..	104	174,265		124	224,877	134,590	15,222	273,515	216,789	258,540	70,712	
Outstanding indebtedness.....Dec. 31, 1949..dollars..		35,834			102,228	40,000	38,843	500,000	20,650		80,370	
.....Dec. 31, 1939..dollars..		1,090			(2)			62,225	(2)	(2)		
DRAINAGE WORKS												
Completed since Jan. 1, 1940.....open ditches..miles..		1			49	13		9	17	99	8	
.....tile drains..miles..					5		4		5	3	1	
.....levees and dikes..miles..												
Completed prior to 1940 ¹open ditches..miles..	63.5	399.3	3.0	16.6	1,050.6	473.3	101.7	1,317.9	608.2	1,156.1	406.1	
.....tile drains..miles..	4.7	1.6			28.0	2.0	7.0	4.2	82.3	11.5	23.6	
.....levees and dikes..miles..					8.0							
Item	Michigan—Con.				Minnesota							
	Washtenaw	Wayne	The State	Aitkin	Anoka	Becker	Beltrami	Benton	Big Stone	Blue Earth	Brown	
LAND AREA												
Approximate land area.....acres..1950..	458,240	388,480	51,205,760	1,167,360	272,000	841,600	1,610,880	258,560	326,400	473,600	392,320	
Land in drainage enterprises.....acres..1950..	364,196	234,009	11,269,962	407,522	99,968	48,102	374,835	16,840	29,625	145,036	88,435	
.....1940..	202,098	197,000	10,990,409	407,959	105,020	41,924	348,779	14,816	26,380	141,751	83,720	
FINANCIAL ITEMS												
Cost of construction and operation and maintenance.....Jan. 1, 1940 to Dec. 31, 1949..dollars..	411,387	2,446,909	18,310,583	136,037	31,937	3,892				1,129,886	168,266	
.....1945 to 1949..dollars..	203,021	1,476,786	8,972,063	38,769	31,937	179				429,157	29,636	
.....1940 to 1944..dollars..	208,366	970,123	9,338,520	97,268		3,713				700,729	138,630	
Cost of new drainage works.....Jan. 1, 1940 to Dec. 31, 1949..dollars..		80,638	1,594,914							69,572		
.....1945 to 1949..dollars..		61,251	1,499,711							69,054		
.....1940 to 1944..dollars..		19,387	95,203							518		
Capital invested prior to 1940 ¹dollars..	1,166,674	957,242	65,576,077	1,308,222	459,399	201,110	1,429,396	70,191	179,252	2,007,534	984,966	
Funds collected for drainage.....Jan. 1, 1940 to Dec. 31, 1949..dollars..	411,431	2,700,546	15,991,688	98,839	1,447	19,950				1,091,624	160,533	
.....1945 to 1949..dollars..	193,716	1,253,321	7,370,617	18,933	1,447	2,463				475,788	19,682	
.....1940 to 1944..dollars..	217,715	1,447,225	8,621,071	79,906		17,487				615,836	140,851	
Outstanding indebtedness.....Dec. 31, 1949..dollars..	328,773	44,738	3,773,824	12,000						48,600		
.....Dec. 31, 1939..dollars..	241,206	(2)	6,034,528	95,000	(2)	21,378	35,573		(2)	770,697	52,885	
DRAINAGE WORKS												
Completed since Jan. 1, 1940.....open ditches..miles..		31	357							12		
.....tile drains..miles..		12	80									
.....levees and dikes..miles..												
Completed prior to 1940 ¹open ditches..miles..	350.3	933.4	15,856.7	589.4	363.4	86.9	610.6	58.9	53.3	76.9	128.3	
.....tile drains..miles..	92.9	20.9	9,893.4		18.5				35.0	456.4	265.9	
.....levees and dikes..miles..			0.4									
Item	Minnesota—Con.											
	Carlton	Carver	Cass	Chippewa	Chisago	Clay	Clear-water	Cotton-wood	Crow Wing	Dakota	Dodge	
LAND AREA												
Approximate land area.....acres..1950..	550,400	229,120	1,313,920	372,480	268,160	672,000	643,200	409,600	639,360	365,440	278,400	
Land in drainage enterprises.....acres..1950..	65,280	18,546	90,379	149,709	41,984	256,470	59,930	137,830	40,672	7,936	30,771	
.....1940..	63,082	18,902	86,260	149,866	34,905	268,335	57,415	139,884	40,843	7,945	23,908	
FINANCIAL ITEMS												
Cost of construction and operation and maintenance.....Jan. 1, 1940 to Dec. 31, 1949..dollars..		39,531		254,646	23,650	136,563	91,076	367,134		25,581	18,416	
.....1945 to 1949..dollars..		3,837		77,764	23,650	88,888	29,752	90,460		16,639	10,756	
.....1940 to 1944..dollars..		35,694		176,882		47,675	61,324	276,674		8,942	7,660	
Cost of new drainage works.....Jan. 1, 1940 to Dec. 31, 1949..dollars..						32,882		42,064			9,644	
.....1945 to 1949..dollars..						32,502		29,115			9,644	
.....1940 to 1944..dollars..						380		12,949				
Capital invested prior to 1940 ¹dollars..	282,488	126,168	302,026	917,414	86,527	1,011,199	203,348	1,669,257	93,289	28,230	119,961	
Funds collected for drainage.....Jan. 1, 1940 to Dec. 31, 1949..dollars..		42,110		284,525	20,851	145,373	16,461	419,385		8,503	7,286	
.....1945 to 1949..dollars..		16,410		81,277	20,520	104,679	77	110,945		7,878		
.....1940 to 1944..dollars..		25,700		203,248	331	40,694	16,384	308,440		625	7,286	
Outstanding indebtedness.....Dec. 31, 1949..dollars..				30,000		4,200						
.....Dec. 31, 1939..dollars..						(2)		224,900			(3)	
DRAINAGE WORKS												
Completed since Jan. 1, 1940.....open ditches..miles..							9		3		1	
.....tile drains..miles..									13			
.....levees and dikes..miles..												
Completed prior to 1940 ¹open ditches..miles..	102.0	58.6	161.7	263.7	74.9	312.6	72.2	36.0	105.6	18.5	30.4	
.....tile drains..miles..		4.0		190.8				586.2			38.4	
.....levees and dikes..miles..												

¹From 1940 Census.

²Data are included only in State totals.

DRAINAGE OF AGRICULTURAL LANDS

County Table 1.—LAND IN DRAINAGE ENTERPRISES AND RELATED FINANCIAL ITEMS: CENSUSES OF DRAINAGE 1950 AND 1940—Continued

[Both censuses taken as of January 1]

Table with columns for Item and Minnesota counties: Douglas, Faribault, Freeborn, Grant, Hennepin, Houston, Hubbard, Isanti, Itasca, Jackson, Kanabec. Rows include LAND AREA, FINANCIAL ITEMS, and DRAINAGE WORKS.

Table with columns for Item and Minnesota counties: Kandiyohi, Kittson, Koochi-ching, Lac qui Parle, Lake of the Woods, Le Sueur, Lincoln, Lyon, McLeod, Mahanomen, Marshall. Rows include LAND AREA, FINANCIAL ITEMS, and DRAINAGE WORKS.

Table with columns for Item and Minnesota counties: Martin, Meeker, Mille Laca, Morrison, Mower, Murray, Nicollet, Nobles, Norman, Otter Tail, Pennington. Rows include LAND AREA, FINANCIAL ITEMS, and DRAINAGE WORKS.

¹From 1940 Census.

²Data are included only in State totals.

COUNTY DRAIN STATES

County Table 1.—LAND IN DRAINAGE ENTERPRISES AND RELATED FINANCIAL ITEMS: CENSUSES OF DRAINAGE 1950 AND 1940—Continued

[Both censuses taken as of January 1]

Item	Minnesota—Con.										
	Pine	Pipestone	Polk	Pope	Ramsey	Red Lake	Redwood	Renville	Rice	Rock ³	Roseau
LAND AREA											
Approximate land area.....acres..1950..	903,680	296,960	1,287,680	435,840	102,400	276,480	559,360	627,200	316,800	310,400	1,072,640
Land in drainage enterprises.....acres..1950..	37,274	22,514	729,120	35,532	11,343	137,216	229,530	284,134	29,370	6,760	680,704
.....1940..	36,463	22,514	716,745	33,860	12,942	118,756	229,608	279,347	24,220	(²)	754,101
FINANCIAL ITEMS											
Cost of construction and operation and maintenance.....Jan. 1, 1940 to Dec. 31, 1949..dollars..		1,529	737,874	551	9,246	84,109	707,413	2,651,340	17,163	2,035	277,463
.....1945 to 1949..dollars..		575	385,330	551	7,647	66,455	201,970	1,568,062	16,839	485	134,588
.....1940 to 1944..dollars..		954	352,544		1,599	17,654	505,443	1,083,278	324	1,550	142,875
Cost of new drainage works.....Jan. 1, 1940 to Dec. 31, 1949..dollars..			92,399			43,869		150,206	13,500		
.....1945 to 1949..dollars..			92,098			42,779		148,099	13,500		
.....1940 to 1944..dollars..			301			1,090		2,107			
Capital invested prior to 1940 ¹dollars..	124,081	249,539	2,329,407	168,872	88,644	247,451	3,213,989	5,477,663	133,896	(²)	1,564,905
Funds collected for drainage.....Jan. 1, 1940 to Dec. 31, 1949..dollars..		21,115	666,134	5,238	5,174	84,131	644,083	2,053,649	17,393	1,602	280,169
.....1945 to 1949..dollars..		10,497	377,782	1,321	5,106	65,841	137,840	1,197,307	17,393	700	118,461
.....1940 to 1944..dollars..		10,618	288,352	3,917	68	18,290	506,243	856,342		902	161,708
Outstanding indebtedness.....Dec. 31, 1949..dollars..						35,000	30,000	600,000			50,236
.....Dec. 31, 1939..dollars..		32,000	303,472	(²)		38,350	287,464	49,150		(²)	
DRAINAGE WORKS											
Completed since Jan. 1, 1940.....open ditches..miles..			8			35		14	7		
.....tile drains..miles..								17			
.....levees and dikes..miles..											
Completed prior to 1940 ¹open ditches..miles..	61.3	14.0	1,117.3	62.7	44.8	124.5	295.2	329.7	54.1	(²)	927.0
.....tile drains..miles..		72.0	12.0	4.4	1.5		839.7	1,022.1	16.4	(²)	
.....levees and dikes..miles..											

Item	Minnesota—Con.										
	St. Louis	Scott	Sherburne	Sibley	Stearns	Steele	Stevens	Swift	Todd	Traverse	Wabasha ³
LAND AREA											
Approximate land area.....acres..1950..	4,019,840	225,280	280,320	371,840	867,840	272,000	364,800	478,080	606,080	366,080	333,440
Land in drainage enterprises.....acres..1950..	231,834	10,554	68,506	118,016	74,240	48,154	64,768	121,754	157,601	155,414	9,240
.....1940..	224,622	11,443	63,998	96,814	67,178	38,819	64,763	122,155	106,706	138,203	(²)
FINANCIAL ITEMS											
Cost of construction and operation and maintenance.....Jan. 1, 1940 to Dec. 31, 1949..dollars..	175,984		48,969	333,394	2,425	132,144	164,400	850,017	22,900	178,716	
.....1945 to 1949..dollars..	47,483		21,117	260,504	2,425	70,308	67,455	346,936	21,289	151,558	
.....1940 to 1944..dollars..	128,501		27,852	72,890		61,836	96,945	503,081	1,611	27,158	
Cost of new drainage works.....Jan. 1, 1940 to Dec. 31, 1949..dollars..				49,994					21,289	82,312	
.....1945 to 1949..dollars..				44,450					21,289	82,312	
.....1940 to 1944..dollars..				5,544							
Capital invested prior to 1940 ¹dollars..	1,386,065	78,657	273,416	823,393	324,157	353,199	488,789	1,423,008	349,545	349,264	(²)
Funds collected for drainage.....Jan. 1, 1940 to Dec. 31, 1949..dollars..	214,857		47,677	133,395	2,025	116,901	163,927	805,672	20,255	144,155	884
.....1945 to 1949..dollars..	69,983		21,485	89,641	2,025	38,509	94,445	273,802	18,644	114,088	
.....1940 to 1944..dollars..	144,874		26,192	43,754		78,392	69,482	531,870	1,611	30,067	884
Outstanding indebtedness.....Dec. 31, 1949..dollars..			15,500	170,000		9,000		567,419	2,645	36,000	
.....Dec. 31, 1939..dollars..	127,099		23,283	43,000		32,200	(²)	873,488		25,860	(²)
DRAINAGE WORKS											
Completed since Jan. 1, 1940.....open ditches..miles..				36					4	22	
.....tile drains..miles..				2							
.....levees and dikes..miles..											
Completed prior to 1940 ¹open ditches..miles..	690.2	34.3	192.7	276.2	223.5	91.5	108.0	168.0	419.9	206.1	(²)
.....tile drains..miles..		1.2	24.9	98.6	7.8	72.7	71.1	366.8	0.4	2.8	(²)
.....levees and dikes..miles..											

Item	Minnesota—Con.							North Dakota			
	Wadena	Waseca	Washing- ton	Watonwan	Wilkin	Winona ³	Wright	Yellow Medicine	The State	Barnes ³	Bottineau
LAND AREA											
Approximate land area.....acres..1950..	343,040	265,600	249,600	277,120	481,280	398,720	429,440	485,120	44,834,560	951,040	1,087,360
Land in drainage enterprises.....acres..1950..	85,184	38,600	18,520	63,053	254,618	1,260	42,598	105,907	1,572,220	2,960	50,688
.....1940..	85,381	36,258	19,066	56,336	238,168	(²)	37,290	103,187	1,376,041	(²)	53,080
FINANCIAL ITEMS											
Cost of construction and operation and maintenance.....Jan. 1, 1940 to Dec. 31, 1949..dollars..	5,880	126,509	3,506	322,250	173,909		15,169	656,753	890,373	902	8,421
.....1945 to 1949..dollars..	3,630	55,612	3,506	164,987	123,399		11,092	230,732	834,609		8,421
.....1940 to 1944..dollars..	2,250	70,897		157,263	50,510		4,077	426,021	55,764	902	
Cost of new drainage works.....Jan. 1, 1940 to Dec. 31, 1949..dollars..		63,118			60,938			21,257	245,364		800
.....1945 to 1949..dollars..		25,011			60,938			16,335	244,784		800
.....1940 to 1944..dollars..		38,107						4,922	580		
Capital invested prior to 1940 ¹dollars..	171,034	281,294	114,699	730,336	784,440	(²)	257,652	1,790,426	3,673,336	(²)	199,661
Funds collected for drainage.....Jan. 1, 1940 to Dec. 31, 1949..dollars..	15,120	108,901		305,851	183,417		9,434	644,602	964,092		2,931
.....1945 to 1949..dollars..	2,539	36,945		166,928	166,335		5,138	196,647	888,958		2,931
.....1940 to 1944..dollars..	12,581	71,956		138,923	17,082		4,296	447,955	75,134		
Outstanding indebtedness.....Dec. 31, 1949..dollars..		40,350		31,000	74,000			10,000	182,591	34	
.....Dec. 31, 1939..dollars..	31,237	53,000	3,015	46,243		(²)		309,754	184,096	(²)	
DRAINAGE WORKS											
Completed since Jan. 1, 1940.....open ditches..miles..		3			17			4	94		1
.....tile drains..miles..											
.....levees and dikes..miles..											
Completed prior to 1940 ¹open ditches..miles..	207.8	69.3	24.2	20.5	297.8	(²)	96.5	94.8	940.4	(²)	60.6
.....tile drains..miles..		18.5	14.5	288.0		(²)	25.7	266.9	10.4	(²)	
.....levees and dikes..miles..											

¹ From 1940 Census.

² Data are included only in State totals.

³ Not shown separately in 1940.

DRAINAGE OF AGRICULTURAL LANDS

County Table 1.—LAND IN DRAINAGE ENTERPRISES AND RELATED FINANCIAL ITEMS: CENSUSES OF DRAINAGE 1950 AND 1940—Continued

[Both censuses taken as of January 1]

Item	North Dakota—Con.										
	Cass	Cavalier	Grand Forks	La Moure ³	McHenry ³	McKenzie	Pembina	Ramsey	Ransom	Richland	Sargent
LAND AREA											
Approximate land area.....acres..1950..	1,119,366	968,320	920,320	727,680	1,209,600	1,798,400	719,360	776,960	552,320	928,000	547,200
Land in drainage enterprises.....acres..1950..	336,918	5,504	137,472	3,680	10,920	23,552	243,139	18,176	41,216	291,234	158,451
.....1940..	315,975	5,400	109,480	(²)	(²)	19,928	197,540	11,918	23,960	235,200	148,320
FINANCIAL ITEMS											
Cost of construction and operation and maintenance.....Jan. 1, 1940 to Dec. 31, 1949..dollars..	304,283	40,188	553	1,987	21,469	42,993	146	251,792	19,059
.....1945 to 1949..dollars..	301,113	38,671	320	12,337	32,621	146	250,077	8,552
.....1940 to 1944..dollars..	3,170	1,517	233	1,987	9,132	10,372	1,715	10,507
Cost of new drainage works.....Jan. 1, 1940 to Dec. 31, 1949..dollars..	1,093	1,994	8,039	216,069
.....1945 to 1949..dollars..	1,093	1,414	8,039	216,069
.....1940 to 1944..dollars..	580
Capital invested prior to 1940 ¹dollars..	1,626,333	19,200	157,047	(²)	(²)	176,431	318,158	6,326	43,389	324,209	393,273
Funds collected for drainage.....Jan. 1, 1940 to Dec. 31, 1949..dollars..	303,016	65,104	528	650	21,469	60,007	272,506	25,157
.....1945 to 1949..dollars..	294,065	42,946	80	12,337	50,437	272,506	13,777
.....1940 to 1944..dollars..	8,951	22,158	448	650	9,132	9,570	11,380
Outstanding indebtedness.....Dec. 31, 1949..dollars..	29,637	(²)	(²)	(²)	79,000	50,960
.....Dec. 31, 1939..dollars..	(²)	(²)	(²)	176,431
DRAINAGE WORKS											
Completed since Jan. 1, 1940.....open ditches..miles..	3	1	7	72
.....tile drains..miles..
.....levees and dikes..miles..
Completed prior to 1940 ¹open ditches..miles..	228.7	13.7	72.6	(²)	(²)	35.0	154.6	6.2	18.1	114.0	84.4
.....tile drains..miles..	(²)	(²)	0.2	1.2	4.0
.....levees and dikes..miles..

Item	North Dakota—Con.				Ohio							
	Trall	Walsh	Williams ⁴	All other counties ^{4,5}	The State	Allen	Ashland	Ashtabula	Auglaize	Brown	Butler	Champaign
LAND AREA												
Approximate land area.....acres..1950..	551,040	823,680	1,344,000	5,667,840	25,318,080	262,400	272,640	451,840	256,000	314,240	301,440	277,120
Land in drainage enterprises.....acres..1950..	177,816	63,329	7,000	165	8,923,362	227,520	11,059	45,000	247,223	4,059	3,941	165,376
.....1940..	182,640	55,040	7,729,267	188,990	11,821	46,099	222,172	3,621	3,968	132,037
FINANCIAL ITEMS												
Cost of construction and operation and maintenance.....Jan. 1, 1940 to Dec. 31, 1949..dollars..	190,075	8,505	6,189,421	221,588	397	1,208	123,095	1,482	10,055	37,657
.....1945 to 1949..dollars..	181,141	1,210	4,639,702	137,724	225	101,008	925	9,938	27,917
.....1940 to 1944..dollars..	8,934	7,295	1,549,719	83,864	172	1,208	22,087	557	117	9,740
Cost of new drainage works.....Jan. 1, 1940 to Dec. 31, 1949..dollars..	17,369	147,941	9,600	6,153
.....1945 to 1949..dollars..	17,369	121,079	9,600	6,153
.....1940 to 1944..dollars..	26,862
Capital invested prior to 1940 ¹dollars..	298,248	53,311	35,215,586	697,067	47,224	123,347	1,117,667	7,996	22,294	490,091
Funds collected for drainage.....Jan. 1, 1940 to Dec. 31, 1949..dollars..	204,530	8,194	5,117,426	164,645	20	121,375	28	10,000	23,426
.....1945 to 1949..dollars..	191,685	8,194	3,392,434	73,008	20	92,427	28	10,000	14,550
.....1940 to 1944..dollars..	12,845	1,724,992	91,637	28,948	8,876
Outstanding indebtedness.....Dec. 31, 1949..dollars..	22,960	398,874	12,959
.....Dec. 31, 1939..dollars..	(²)	303,447	8,815	1,827	8,716	2,046
DRAINAGE WORKS												
Completed since Jan. 1, 1940.....open ditches..miles..	10	38	2	3
.....tile drains..miles..	7
.....levees and dikes..miles..
Completed prior to 1940 ¹open ditches..miles..	110.2	25.8	18,732.2	594.6	40.2	87.6	549.2	15.2	3.7	184.1
.....tile drains..miles..	10,163.9	228.0	0.9	4.1	453.4	7.7	181.8
.....levees and dikes..miles..	5.2

¹From 1940 Census. ²Data are included only in State totals. ³Not shown separately in 1940. ⁴From Census of Irrigation for 1950. No data available except for lands drained. ⁵Includes Divide, Grant, Morton, Mountrail, and Ward Counties, not reporting in 1940.

COUNTY DRAIN STATES

County Table 1.—LAND IN DRAINAGE ENTERPRISES AND RELATED FINANCIAL ITEMS: CENSUSES OF DRAINAGE 1950 AND 1940—Continued

[Both censuses taken as of January 1]

Item	Ohio—Con.										
	Fulton	Geauga	Greene	Hancock	Hardin	Henry	Holmes	Huron	Knox	Licking	Logan
LAND AREA											
Approximate land area.....acres..1950..	260,480	260,480	266,240	340,480	298,880	266,240	271,360	318,080	340,480	439,040	295,040
Land in drainage enterprises.....acres..1950..	256,371	4,397	43,804	335,883	298,880	264,140	5,536	98,584	13,286	79,283	246,871
.....1940..	239,006	3,119	51,518	291,519	265,025	261,328	2,029	84,635	1,974	73,596	248,578
FINANCIAL ITEMS											
Cost of construction and operation and maintenance.....Jan. 1, 1940 to Dec. 31, 1949..dollars..	183,021		13,502	335,091	126,840	282,581		52,825	12,053	16,398	99,013
.....1945 to 1949..dollars..	119,671		6,126	274,328	103,596	224,270		45,822	12,053	14,525	86,901
.....1940 to 1944..dollars..	63,350		7,376	60,763	23,244	58,311		7,003		1,873	12,112
Cost of new drainage works.....Jan. 1, 1940 to Dec. 31, 1949..dollars..								2,128	12,053		
.....1945 to 1949..dollars..									12,053		
.....1940 to 1944..dollars..								2,128			
Capital invested prior to 1940 ¹dollars..	1,105,585	23,010	180,032	1,337,737	1,118,890	1,712,478	11,872	317,005	1,300	144,595	1,364,660
Funds collected for drainage.....Jan. 1, 1940 to Dec. 31, 1949..dollars..	166,596		15,098	335,387	80,825	294,635	299	33,761	7,569	32,367	32,428
.....1945 to 1949..dollars..	93,868		9,981	292,271	41,238	234,141	299	17,225	3,856	836	10,221
.....1940 to 1944..dollars..	72,728		5,117	43,116	39,587	60,494		16,536	3,713	31,531	22,207
Outstanding indebtedness.....Dec. 31, 1949..dollars..				15,691				1,977			
.....Dec. 31, 1939..dollars..	16,151		(2)	(2)	22,196					(2)	13,849
DRAINAGE WORKS											
Completed since Jan. 1, 1940.....open ditches..miles..								3	4		
.....tile drains..miles..								1	1		
.....levees and dikes..miles..											
Completed prior to 1940 ¹open ditches..miles..	572.9	18.6	138.9	562.1	477.0	1,048.5	15.2	232.4	3.5	38.7	588.6
.....tile drains..miles..	369.7		53.4	622.6	579.3	19.0	0.5	119.4	0.6	59.8	601.4
.....levees and dikes..miles..											3.7

Item	Ohio—Con.										
	Lorain	Lucas	Madison	Mahoning	Marion	Medina	Mercer	Miami	Montgomery	Morrow	Muskingum ³
LAND AREA											
Approximate land area.....acres..1950..	316,800	219,520	296,960	268,160	259,200	271,360	290,560	260,480	297,600	258,560	426,880
Land in drainage enterprises.....acres..1950..	190,165	178,843	261,216	1,720	246,392	17,355	287,060	185,344	60,160	80,859	1,500
.....1940..	173,586	141,912	244,258	2,638	226,474	15,269	243,387	180,297	48,920	73,329	(2)
FINANCIAL ITEMS											
Cost of construction and operation and maintenance.....Jan. 1, 1940 to Dec. 31, 1949..dollars..	154,437	307,026	65,237		154,788		226,544	92,784	27,527	41,981	
.....1945 to 1949..dollars..	113,514	231,584	54,710		123,903		169,936	63,621	26,597	31,618	
.....1940 to 1944..dollars..	40,923	75,442	10,527		30,885		56,608	29,163	930	10,363	
Cost of new drainage works.....Jan. 1, 1940 to Dec. 31, 1949..dollars..								33,068			
.....1945 to 1949..dollars..								33,068			
.....1940 to 1944..dollars..											
Capital invested prior to 1940 ¹dollars..	695,088	315,656	821,833	8,686	889,780	90,849	1,176,636	889,759	254,029	269,537	(2)
Funds collected for drainage.....Jan. 1, 1940 to Dec. 31, 1949..dollars..	79,508	225,042	1,998		128,224	297	190,575	83,779	13,555	33,455	
.....1945 to 1949..dollars..	50,875	118,249	668		102,520		124,581	35,218	11,878	24,913	
.....1940 to 1944..dollars..	28,633	106,793	1,330		25,704	297	65,994	48,561	1,677	8,542	
Outstanding indebtedness.....Dec. 31, 1949..dollars..		31,975	12,432		17,231		11,479	(2)		6,357	
.....Dec. 31, 1939..dollars..			(2)		2,914					6,343	
DRAINAGE WORKS											
Completed since Jan. 1, 1940.....open ditches..miles..								5			
.....tile drains..miles..											
.....levees and dikes..miles..											
Completed prior to 1940 ¹open ditches..miles..	1,147.8	359.7	291.6	9.6	450.8	47.1	371.5	118.5	68.7	116.5	(2)
.....tile drains..miles..	52.6	17.5	457.8		486.9	0.7	263.2	584.6	79.1	190.6	(2)
.....levees and dikes..miles..											

Item	Ohio—Con.										
	Ottawa	Paulding	Perry ³	Pickaway	Portage	Preble	Putnam	Richland	Ross ³	Sandusky	Seneca
LAND AREA											
Approximate land area.....acres..1950..	168,320	266,240	261,760	324,480	322,560	273,920	311,040	319,360	439,680	262,400	352,640
Land in drainage enterprises.....acres..1950..	139,993	262,690	2,743	44,646	21,146	216,384	386,753	45,820	583	243,776	207,104
.....1940..	129,004	247,416	(2)	35,331	22,132	139,497	281,362	48,727	(2)	244,653	192,068
FINANCIAL ITEMS											
Cost of construction and operation and maintenance.....Jan. 1, 1940 to Dec. 31, 1949..dollars..	110,046	211,343		20,004	7,493	11,876	325,043	87,880		144,570	111,898
.....1945 to 1949..dollars..	79,830	153,247		19,405	7,110	6,623	233,842	58,226		85,241	69,572
.....1940 to 1944..dollars..	30,216	58,096		599	383	5,253	91,201	29,654		59,329	42,326
Cost of new drainage works.....Jan. 1, 1940 to Dec. 31, 1949..dollars..											
.....1945 to 1949..dollars..											
.....1940 to 1944..dollars..											
Capital invested prior to 1940 ¹dollars..	340,896	1,098,231	(2)	82,382	81,801	646,577	1,572,766	347,756	(2)	1,006,798	610,843
Funds collected for drainage.....Jan. 1, 1940 to Dec. 31, 1949..dollars..	84,195	153,328		12,378	1,973	5,221	340,797	39,186		52,656	114,022
.....1945 to 1949..dollars..	50,441	88,785		12,274	1,973	1,205	234,487	12,691		22,644	62,521
.....1940 to 1944..dollars..	33,754	64,543		104		4,016	106,310	26,495		30,012	51,501
Outstanding indebtedness.....Dec. 31, 1949..dollars..	36,471			12,247	4,554					35,600	
.....Dec. 31, 1939..dollars..	(2)	16,862					2,654	7,456		15,982	
DRAINAGE WORKS											
Completed since Jan. 1, 1940.....open ditches..miles..											
.....tile drains..miles..											
.....levees and dikes..miles..											
Completed prior to 1940 ¹open ditches..miles..	281.0	1,000.5	(2)	58.2	84.5	107.8	806.7	86.9	(2)	952.1	429.1
.....tile drains..miles..	1.6	82.2	(2)	28.1	0.7	523.6	285.3	35.3	(2)	55.9	168.4
.....levees and dikes..miles..											

¹From 1940 Census.

²Data are included only in State totals.

³Not shown separately in 1940.

DRAINAGE OF AGRICULTURAL LANDS

County Table 1.—LAND IN DRAINAGE ENTERPRISES AND RELATED FINANCIAL ITEMS: CENSUSES OF DRAINAGE 1950 AND 1940—Continued

[Both censuses taken as of January 1]

Item	Ohio—Con.								
	Shelby	Stark	Summit	Trumbull	Union	Van Wert	Warren	Wayne	Williams
LAND AREA									
Approximate land area.....acres..1950..	261,760	371,200	264,320	403,200	277,760	261,760	261,120	359,040	269,440
Land in drainage enterprises.....acres..1950..	207,872	14,384	21,310	18,918	277,100	257,610	10,196	58,016	245,696
.....1940..	200,550	14,588	25,429	42,964	277,030	253,863	6,799	84,254	128,312
FINANCIAL ITEMS									
Cost of construction and operation and maintenance.....Jan. 1, 1940 to Dec. 31, 1949..dollars..	66,148	119,432	29,641	563	93,662	433,510	8,184	23,828	137,373
.....1945 to 1949..dollars..	65,826	74,352	489	47,558	341,785	4,284	7,798	102,732
.....1940 to 1944..dollars..	322	45,080	29,641	74	46,104	91,725	3,900	16,030	34,641
Cost of new drainage works.....Jan. 1, 1940 to Dec. 31, 1949..dollars..	53,123	4,486
.....1945 to 1949..dollars..	30,436	2,439
.....1940 to 1944..dollars..	22,687	2,047
Capital invested prior to 1940 ¹dollars..	926,936	175,168	500,677	109,530	1,074,376	1,212,511	17,981	454,694	549,679
Funds collected for drainage.....Jan. 1, 1940 to Dec. 31, 1949..dollars..	69,966	24,017	35,506	1,307	83,513	414,458	8,184	65,444	120,048
.....1945 to 1949..dollars..	56,570	17,959	7,744	130	29,707	334,513	2,605	19,140	87,146
.....1940 to 1944..dollars..	13,396	6,058	27,762	1,177	53,806	79,945	5,579	46,304	32,902
Outstanding indebtedness.....Dec. 31, 1949..dollars..	(²)	5,565
.....Dec. 31, 1939..dollars..	17,611	17,109	10,270
DRAINAGE WORKS									
Completed since Jan. 1, 1940.....open ditches..miles..	10	1
.....tile drains..miles..	3	1
.....levees and dikes..miles..
Completed prior to 1940 ¹open ditches..miles..	612.0	198.6	121.5	156.1	345.7	678.9	16.2	282.4	298.9
.....tile drains..miles..	156.2	15.4	2.8	1.4	451.8	186.2	1.1	4.2	195.3
.....levees and dikes..miles..	0.5	0.1

Item	Ohio—Con.			Oklahoma							
	Wood	Wyandot	The State	Alfalfa	Canadian ³	Cleveland	Garvin	Jackson ⁴	Kay	Lincoln	McClain ³
LAND AREA											
Approximate land area.....acres..1950..	395,520	259,840	44,341,120	565,760	566,400	350,080	520,960	499,200	604,160	622,720	357,760
Land in drainage enterprises.....acres..1950..	385,739	139,307	300,884	720	5,376	12,032	17,536	2,000	17,408	52,347	26,624
.....1940..	386,841	151,249	197,646	(²)	14,180	10,420	16,680	46,142	(²)
FINANCIAL ITEMS											
Cost of construction and operation and maintenance.....Jan. 1, 1940 to Dec. 31, 1949..dollars..	481,380	12,739	299,114	279	5,893	20,050	5,819	118,902
.....1945 to 1949..dollars..	352,733	7,942	96,420	199	12,000	1,597	12,066
.....1940 to 1944..dollars..	128,647	4,797	202,694	80	5,893	8,050	4,222	106,836
Cost of new drainage works.....Jan. 1, 1940 to Dec. 31, 1949..dollars..	62,027
.....1945 to 1949..dollars..	62,027
.....1940 to 1944..dollars..
Capital invested prior to 1940 ¹dollars..	2,069,766	774,232	1,971,350	(²)	89,900	185,000	59,384	786,251	(²)
Funds collected for drainage.....Jan. 1, 1940 to Dec. 31, 1949..dollars..	484,127	21,828	276,412	279	3,284	20,646	4,896	153,019
.....1945 to 1949..dollars..	354,023	15,365	52,166	199	12,601	171	20,865
.....1940 to 1944..dollars..	130,104	6,463	224,246	80	3,284	8,045	4,725	132,154
Outstanding indebtedness.....Dec. 31, 1949..dollars..	69,149	8,376	197,489	(²)	114,003	1,175	16,000
.....Dec. 31, 1939..dollars..	11,154	(²)	262,199	(²)	102,690	(²)	(²)
DRAINAGE WORKS											
Completed since Jan. 1, 1940.....open ditches..miles..	16
.....tile drains..miles..
.....levees and dikes..miles..
Completed prior to 1940 ¹open ditches..miles..	1,302.4	233.5	334.3	(²)	32.0	19.0	28.0	68.8	(²)
.....tile drains..miles..	57.1	339.7
.....levees and dikes..miles..

Item	Oklahoma—Con.							South Dakota			
	Muskogee ³	Oklahoma	Pottawatomie	Stephens ³	Tillman ³	Tulsa	Wagoner	All other counties ^{4,5}	The State	Beadle	Bon Homme ³
LAND AREA											
Approximate land area.....acres..1950..	526,080	453,760	511,360	571,520	551,040	366,080	373,760	2,062,720	48,983,040	807,040	371,200
Land in drainage enterprises.....acres..1950..	15,872	22,528	53,474	3,768	4,864	10,752	55,552	707,263	8,192	3,277
.....1940..	(²)	18,360	29,171	(²)	(²)	9,000	676,472	8,160	(²)
FINANCIAL ITEMS											
Cost of construction and operation and maintenance.....Jan. 1, 1940 to Dec. 31, 1949..dollars..	481	49,000	27,453	7,500	63,737	488,275	588
.....1945 to 1949..dollars..	5,950	511	460	63,737	257,335	588
.....1940 to 1944..dollars..	481	43,150	26,942	7,040	225,940
Cost of new drainage works.....Jan. 1, 1940 to Dec. 31, 1949..dollars..	62,027
.....1945 to 1949..dollars..	62,027
.....1940 to 1944..dollars..
Capital invested prior to 1940 ¹dollars..	(²)	78,652	369,163	(²)	(²)	20,500	5,078,771	6,496	(²)
Funds collected for drainage.....Jan. 1, 1940 to Dec. 31, 1949..dollars..	225	48,942	25,824	7,246	12,051	470,508
.....1945 to 1949..dollars..	95	5,808	303	3,103	9,021	234,219
.....1940 to 1944..dollars..	130	43,134	25,521	4,143	3,030	236,289
Outstanding indebtedness.....Dec. 31, 1949..dollars..	481	24,395	24,145	17,290	721,885
.....Dec. 31, 1939..dollars..	(²)	41,967	(²)	(²)	1,132,904
DRAINAGE WORKS											
Completed since Jan. 1, 1940.....open ditches..miles..	16
.....tile drains..miles..
.....levees and dikes..miles..
Completed prior to 1940 ¹open ditches..miles..	(²)	25.0	56.5	(²)	(²)	11.0	840.7	13.0	(²)
.....tile drains..miles..	335.8	(²)
.....levees and dikes..miles..	7.4

¹From 1940 Census. ²Data are included only in State totals. ³Not shown separately in 1940. ⁴From Census of Irrigation for 1950. No data available except for land drained. ⁵Includes Caddo, Garfield, and Kingfisher Counties, not reporting in 1940.

COUNTY DRAIN STATES

County Table 1.—LAND IN DRAINAGE ENTERPRISES AND RELATED FINANCIAL ITEMS: CENSUSES OF DRAINAGE 1950 AND 1940—Continued

[Both censuses taken as of January 1]

Item	South Dakota—Con.									
	Brookings	Brown	Butte	Charles Mix ²	Clark	Clay	Codington	Davison	Day ³	Douglas
LAND AREA										
Approximate land area.....acres..1950..	512,640	1,073,280	1,440,640	723,840	624,640	257,920	442,240	276,480	678,400	278,400
Land in drainage enterprises.....acres..1950..	7,200	112,067	52,290	800	6,291	59,050	2,408	15,474	3,080	19,640
.....1940..	4,440	98,798	69,730	(²)	6,560	54,065	2,360	15,700	(²)	19,553
FINANCIAL ITEMS										
Cost of construction and operation and maintenance.....Jan. 1, 1940 to Dec. 31, 1949..dollars..		690	187,840			74,387		528		65,010
.....1945 to 1949..dollars..		690	93,920			30,339		528		50,224
.....1940 to 1944..dollars..			93,920			44,048				14,786
Cost of new drainage works.....Jan. 1, 1940 to Dec. 31, 1949..dollars..										
.....1945 to 1949..dollars..										
.....1940 to 1944..dollars..										
Capital invested prior to 1940 ¹dollars..	12,832	228,653	692,540	(²)	35,665	697,981	23,624	101,391	(²)	206,771
Funds collected for drainage.....Jan. 1, 1940 to Dec. 31, 1949..dollars..			187,840			56,800		209		66,687
.....1945 to 1949..dollars..			93,920			14,844				49,301
.....1940 to 1944..dollars..			93,920			41,956		209		17,386
Outstanding indebtedness.....Dec. 31, 1949..dollars..			687,500							
.....Dec. 31, 1939..dollars..		(²)	692,540			(²)				(²)
DRAINAGE WORKS										
Completed since Jan. 1, 1940.....open ditches..miles..										
.....tile drains..miles..										
.....levees and dikes..miles..										
Completed prior to 1940 ¹open ditches..miles..	8.7	50.9	198.4	(²)	4.5	63.4		10.0	(²)	46.8
.....tile drains..miles..	0.1		7.1	(²)	11.3	2.3	8.0	14.5	(²)	0.3
.....levees and dikes..miles..										

Item	South Dakota—Con.									
	Hamlin	Hanson	Hutchinson	Jerauld	Kingsbury	Lake	Lincoln	Lyman ³	McCook	Marshall
LAND AREA										
Approximate land area.....acres..1950..	332,800	275,840	520,960	337,920	524,160	365,440	368,640	1,078,400	369,280	560,000
Land in drainage enterprises.....acres..1950..	13,599	8,510	8,760	480	9,160	25,805	33,971	4,320	2,080	91,392
.....1940..	13,880	8,495			7,640	25,700	32,271	(²)	2,080	94,640
FINANCIAL ITEMS										
Cost of construction and operation and maintenance.....Jan. 1, 1940 to Dec. 31, 1949..dollars..	513		1,264		3,764		231			4,554
.....1945 to 1949..dollars..	269		1,264		1,882		231			4,554
.....1940 to 1944..dollars..	244				1,882					
Cost of new drainage works.....Jan. 1, 1940 to Dec. 31, 1949..dollars..										
.....1945 to 1949..dollars..										
.....1940 to 1944..dollars..										
Capital invested prior to 1940 ¹dollars..	53,450	45,064			60,687	384,943	356,132	(²)	23,777	334,320
Funds collected for drainage.....Jan. 1, 1940 to Dec. 31, 1949..dollars..	56		5,601		3,764		2,972			4,554
.....1945 to 1949..dollars..			5,601		1,882		2,857			4,554
.....1940 to 1944..dollars..	56				1,882		115			
Outstanding indebtedness.....Dec. 31, 1949..dollars..						129,993				
.....Dec. 31, 1939..dollars..										(²)
DRAINAGE WORKS										
Completed since Jan. 1, 1940.....open ditches..miles..										
.....tile drains..miles..										
.....levees and dikes..miles..										
Completed prior to 1940 ¹open ditches..miles..	24.6	7.5			30.9	6.6	43.1	(²)		40.8
.....tile drains..miles..	1.8	11.9			4.7	105.4	54.5	(²)	5.2	
.....levees and dikes..miles..										

Item	South Dakota—Con.										
	Meade	Miner	Minnehaha	Moody	Roberts ³	Sanborn	Spink ³	Turner	Union	Yankton	All other counties ^{4 5}
LAND AREA											
Approximate land area.....acres..1950..	2,218,240	365,440	521,600	334,720	711,040	365,440	963,840	391,040	290,560	335,360	2,664,960
Land in drainage enterprises.....acres..1950..	2,752	5,200	42,172	4,681	8,576	42,880	15,929	50,217	17,920	28,800	290
.....1940..	2,776	2,800	43,600	4,400	(²)	32,280	(²)	51,720	16,898	27,770	
FINANCIAL ITEMS											
Cost of construction and operation and maintenance.....Jan. 1, 1940 to Dec. 31, 1949..dollars..	9,700		90,510			2,207		24,181	2,597	14,711	
.....1945 to 1949..dollars..	4,850		31,652			1,860		24,077	2,370	8,037	
.....1940 to 1944..dollars..	4,850		58,858			347		104		6,674	
Cost of new drainage works.....Jan. 1, 1940 to Dec. 31, 1949..dollars..											
.....1945 to 1949..dollars..											
.....1940 to 1944..dollars..											
Capital invested prior to 1940 ¹dollars..	36,975	7,175	774,615	76,829	(²)	208,493	(²)	220,838	77,536	335,105	
Funds collected for drainage.....Jan. 1, 1940 to Dec. 31, 1949..dollars..	9,700		90,301			290,360		21,276	2,246	18,502	
.....1945 to 1949..dollars..	4,850		23,124			15,929		21,276	2,246	9,764	
.....1940 to 1944..dollars..	4,850		67,177							8,738	
Outstanding indebtedness.....Dec. 31, 1949..dollars..	34,385		(²)	(²)		69,407					
.....Dec. 31, 1939..dollars..	36,975										
DRAINAGE WORKS											
Completed since Jan. 1, 1940.....open ditches..miles..											
.....tile drains..miles..											
.....levees and dikes..miles..											
Completed prior to 1940 ¹open ditches..miles..	10.4	2.9	24.7	8.8	(²)	36.3	(²)	98.9	41.0	32.1	
.....tile drains..miles..		2.1	27.4	16.2	(²)	30.0	(²)	26.8	1.0	4.9	
.....levees and dikes..miles..								7.4			

¹From 1940 Census. ²Data are included only in State totals. ³Not shown separately in 1940. ⁴From Census of Irrigation for 1950. No data available except for land drained. ⁵Includes Pennington and Todd Counties, not reporting in 1940.