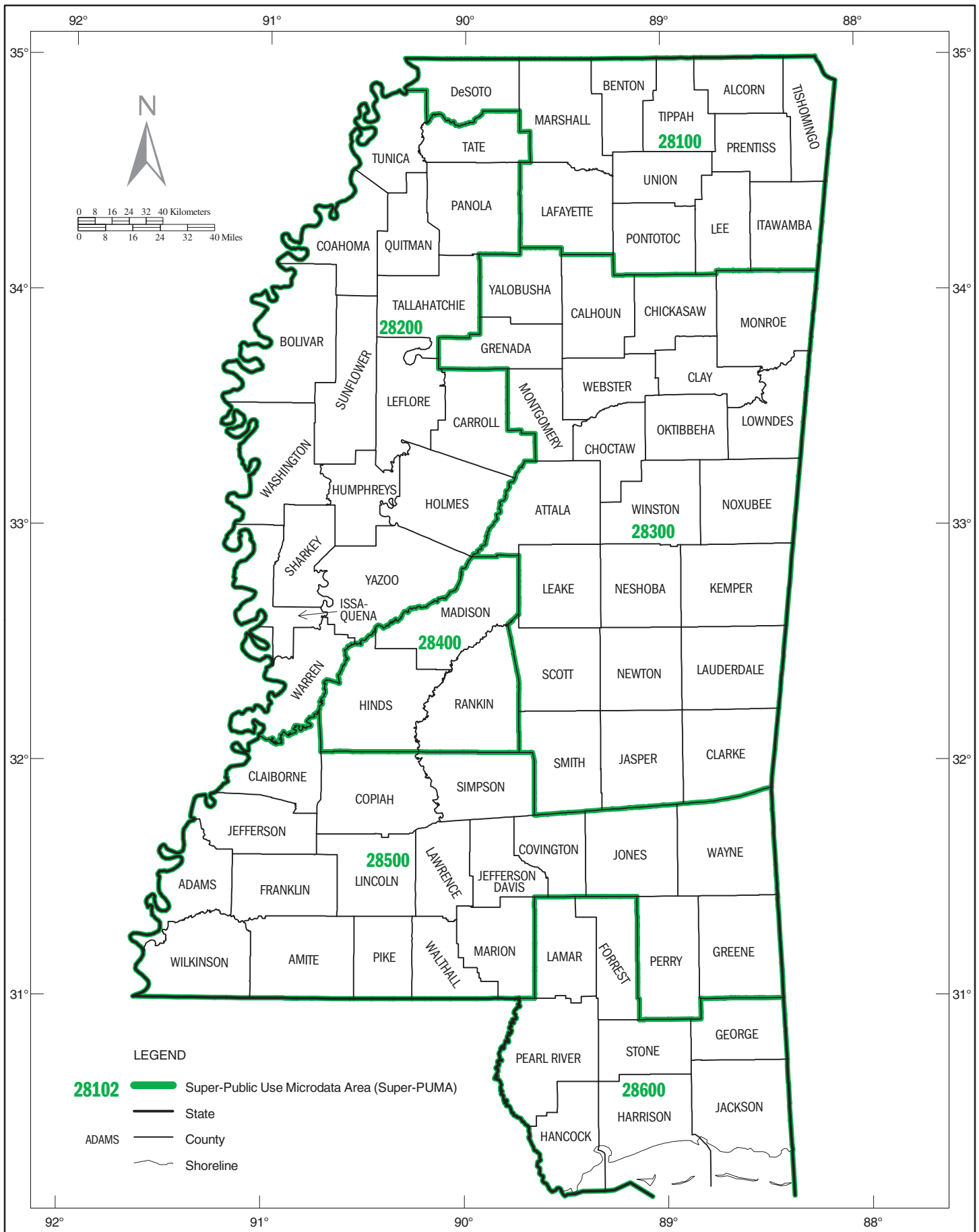
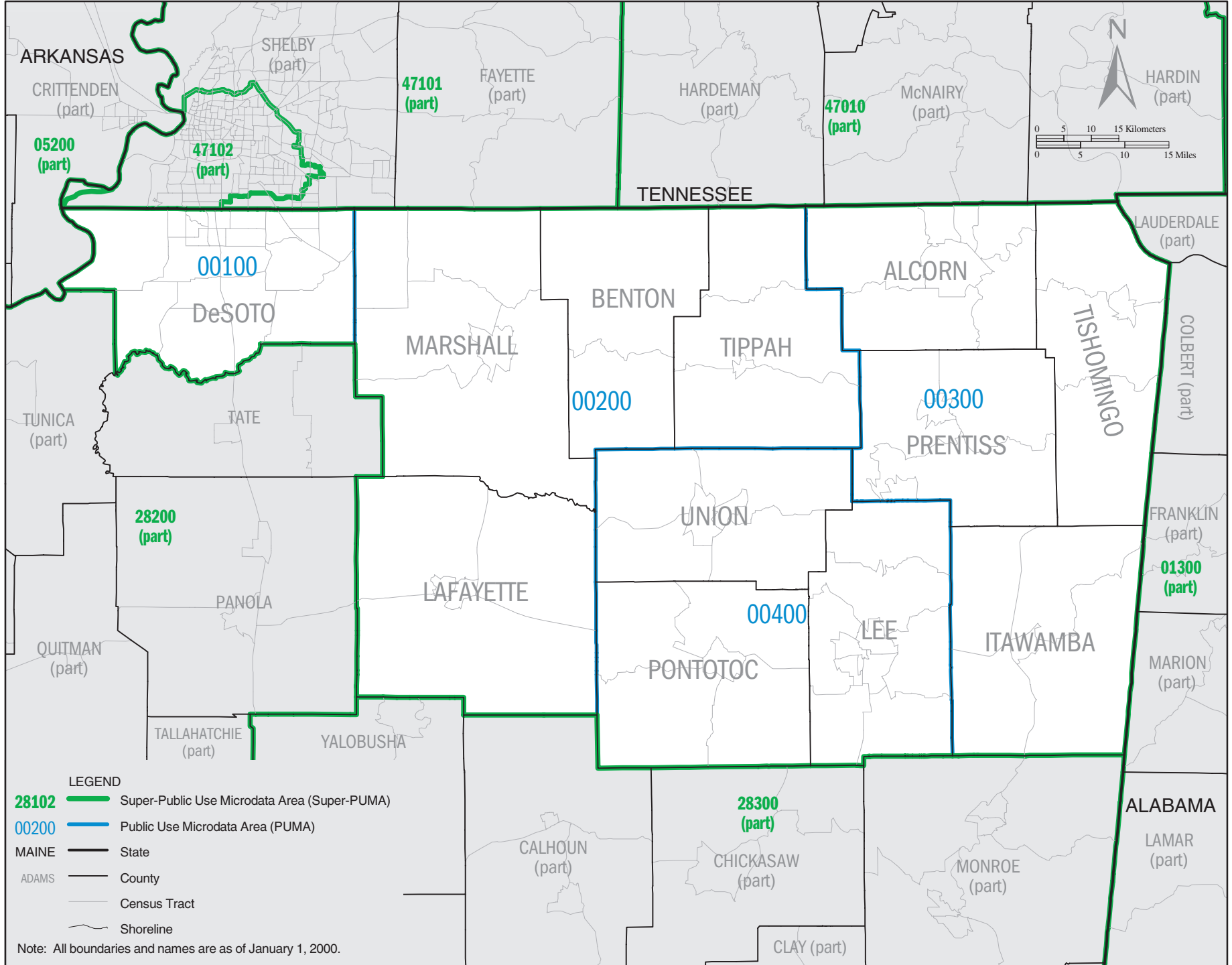
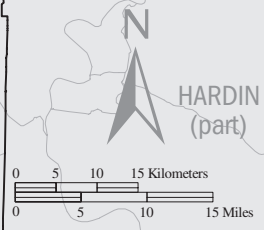


MISSISSIPPI – Census 2000 Super-Public Use Microdata Areas (Super-PUMAs)



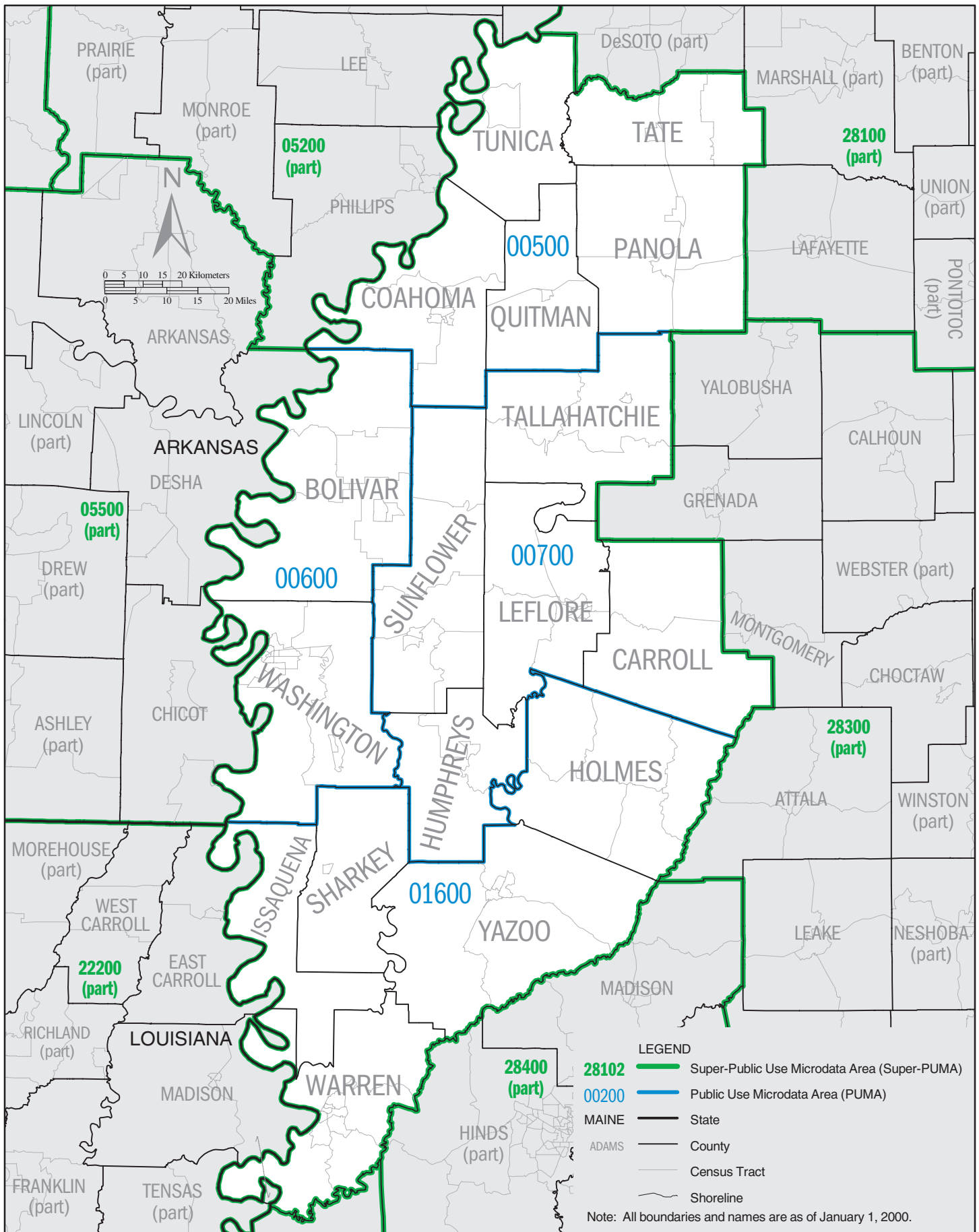


LEGEND

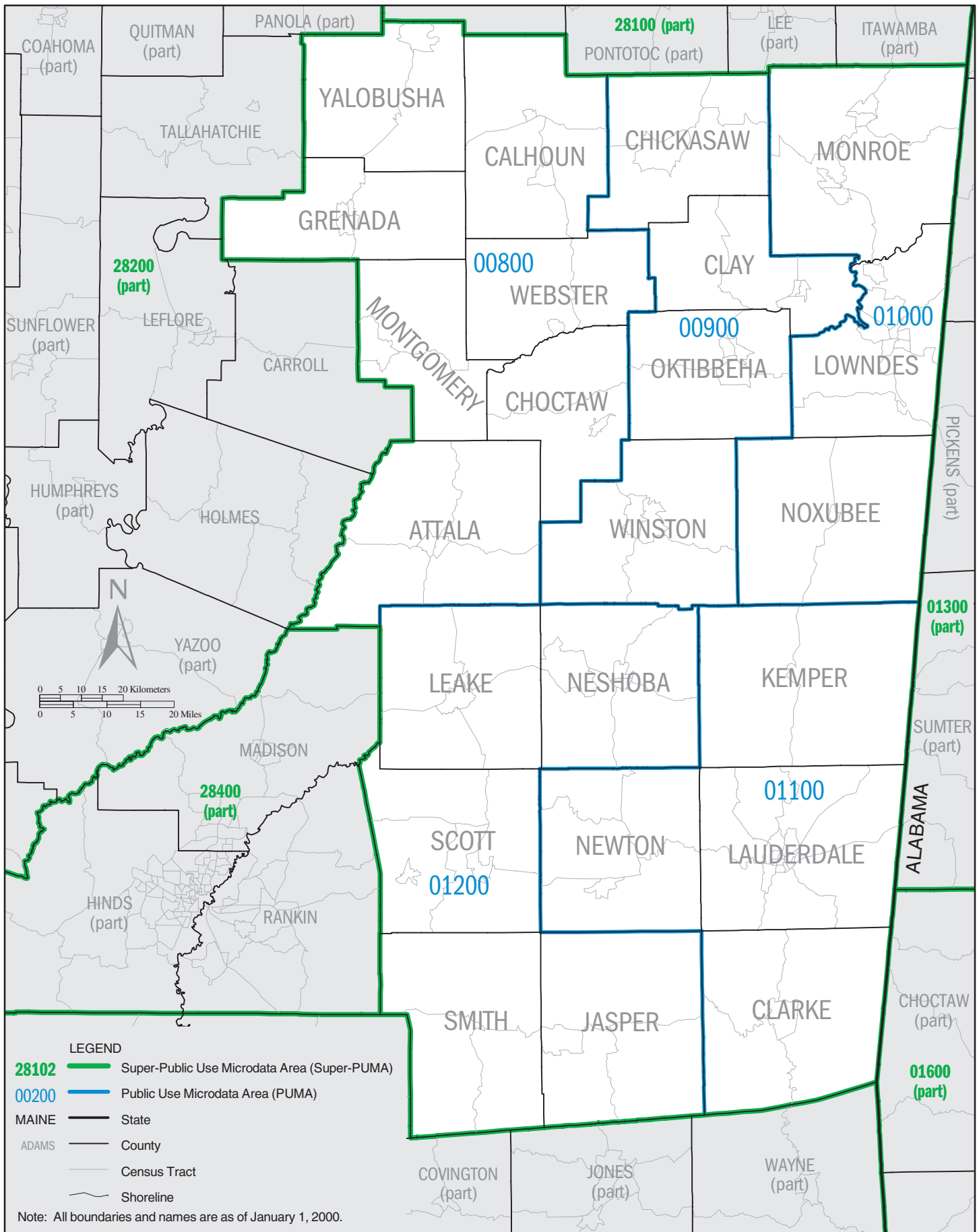
- 28102** Super-Public Use Microdata Area (Super-PUMA)
- 00200** Public Use Microdata Area (PUMA)
- MAINE State
- ADAMS County
- County
- Census Tract
- Shoreline

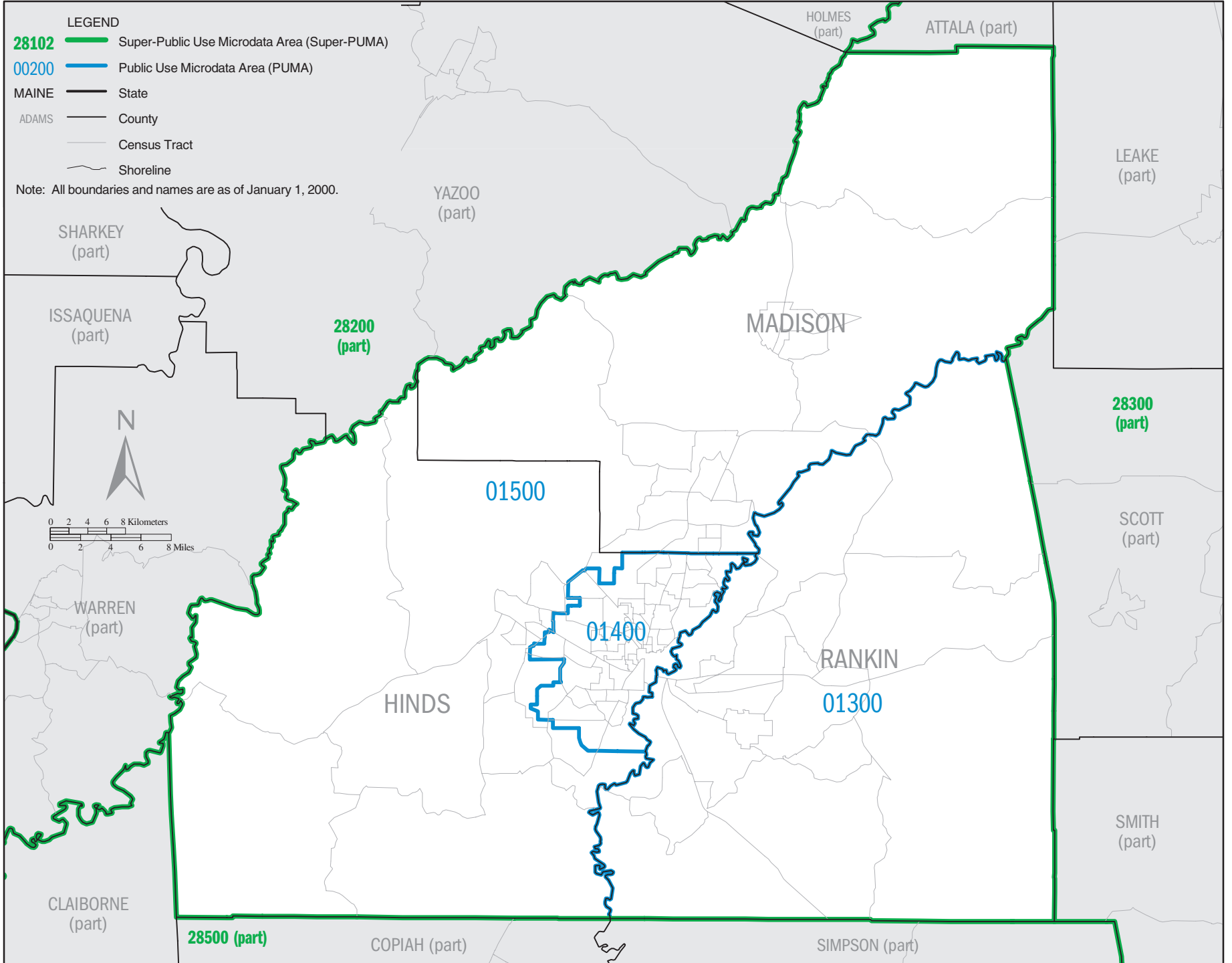
Note: All boundaries and names are as of January 1, 2000.

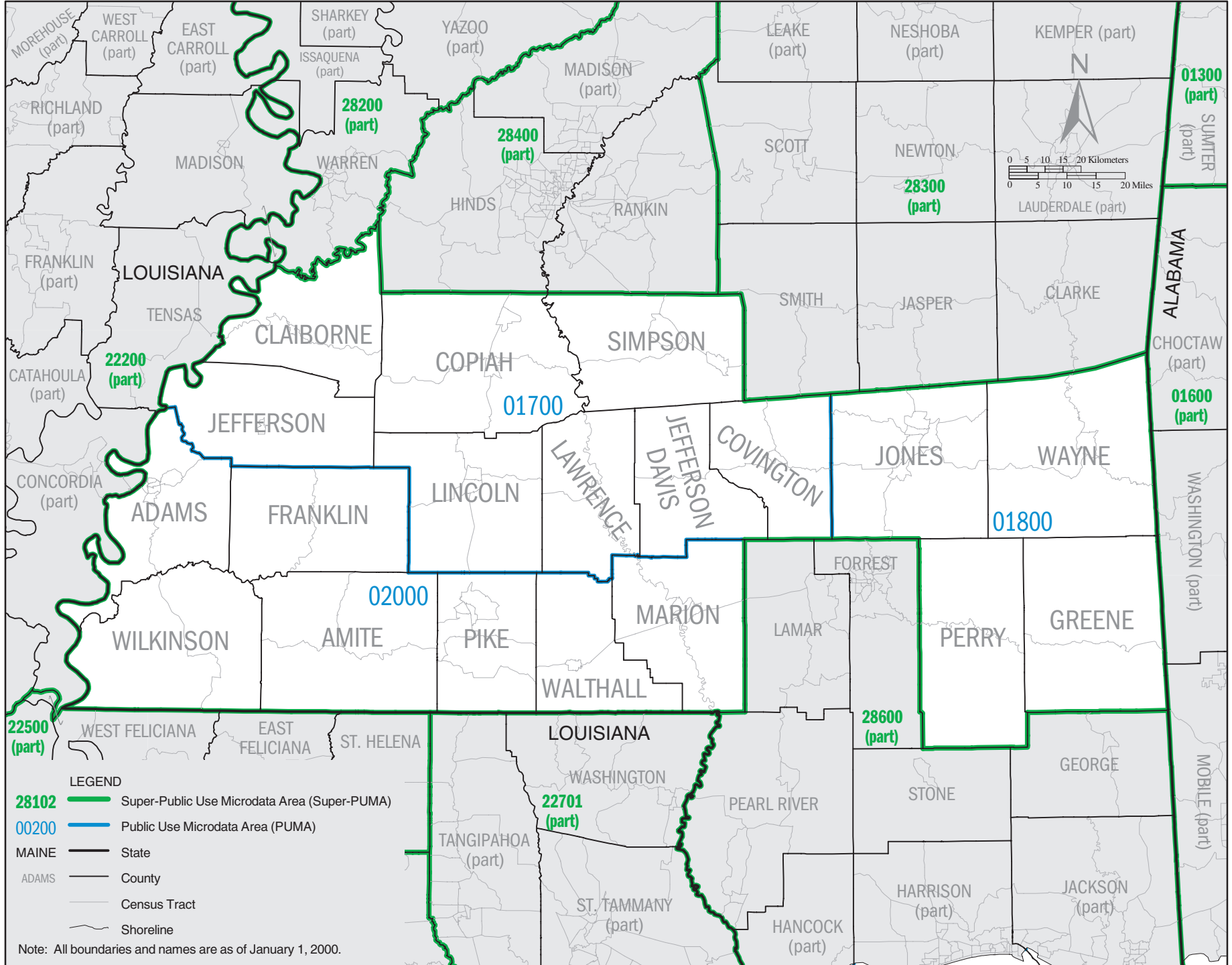
MISSISSIPPI Super-PUMA 28200: Census 2000 Public Use Microdata Areas (PUMAs)



MISSISSIPPI Super-PUMA 28300: Census 2000 Public Use Microdata Areas (PUMAs)



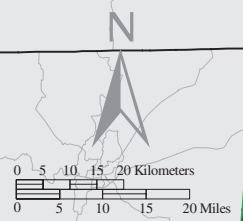




6 Mississippi

Public Use Microdata Sample (PUMS) files
U.S. Census Bureau, Census 2000

01300 (part) SUMTER (part)
01600 (part) ALABAMA CHOCTAW (part)



Map labels include counties: MOREHOUSE (part), WEST CARROLL (part), EAST CARROLL (part), SHARKEY (part), YAZOO (part), MADISON (part), LEAKE (part), NESHOMA (part), KEMPER (part), RICHLAND (part), MADISON, WARREN, HINDS, RANKIN, SCOTT, NEWTON, LAUDERDALE (part), FRANKLIN (part), LOUISIANA, TENSAS, CLAIBORNE, COPIAH, SIMPSON, SMITH, JASPER, CLARKE, CATAHOULA (part), JEFFERSON, LAWRENCE, JEFFERSON, COVINGTON, JONES, WAYNE, CONCORDIA (part), ADAMS, FRANKLIN, LINCOLN, LAWRENCE, DAVIS, MARION, FORREST, WILKINSON, AMITE, PIKE, WALTHALL, WALTHALL, MARION, FORREST, LAMAR, PERRY, GREENE, WEST FELICIANA, EAST FELICIANA, ST. HELENA, TANGIPAHOA (part), WASHINGTON, PEARL RIVER, STONE, GEORGE, MOBILE (part), ST. TAMMANY (part), HANCOCK (part), HARRISON (part), JACKSON (part).

PUMA codes and populations: 28200 (part), 28400 (part), 22200 (part), 01700, 02000, 01800, 22500 (part), 22701 (part), 28600 (part).

