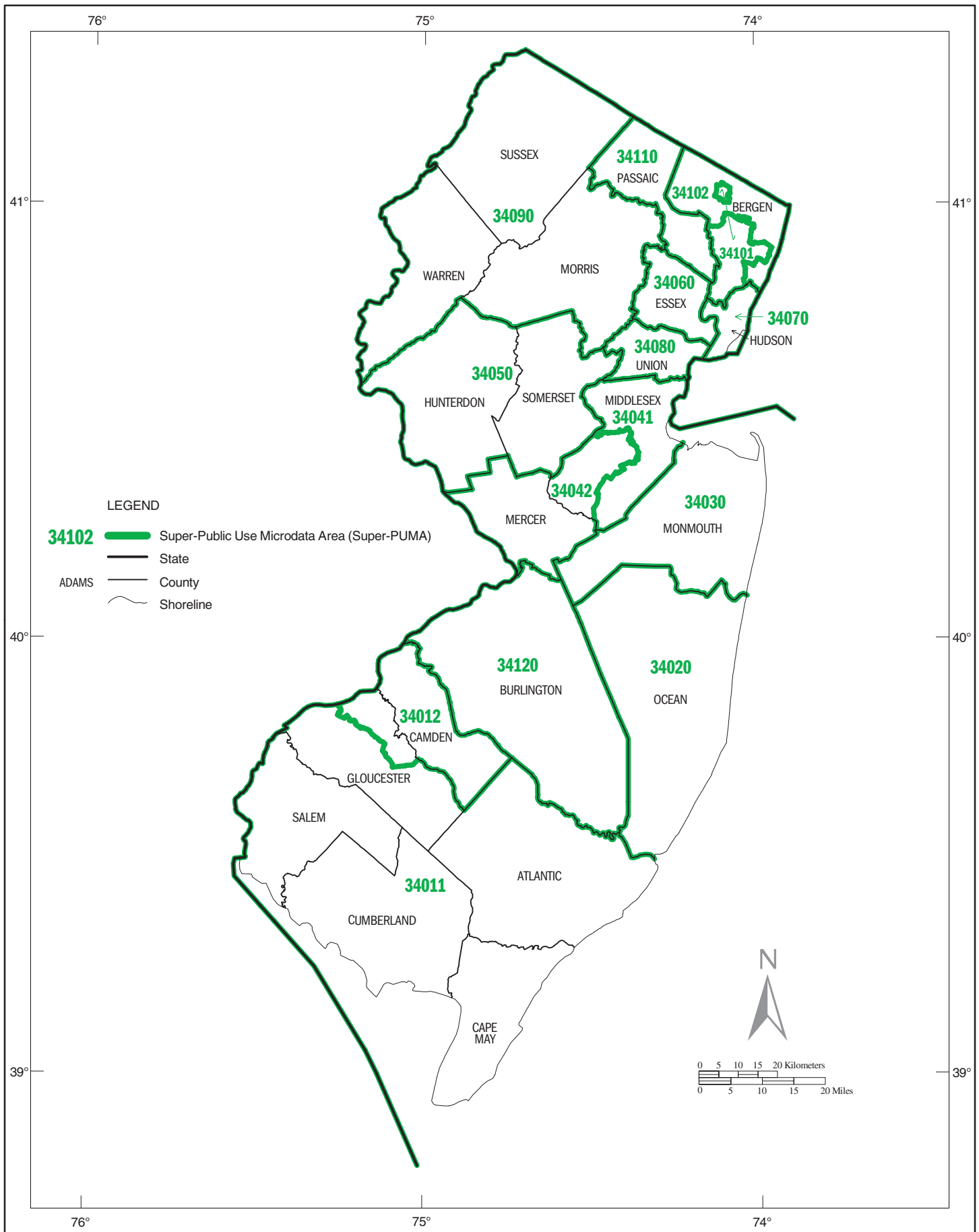
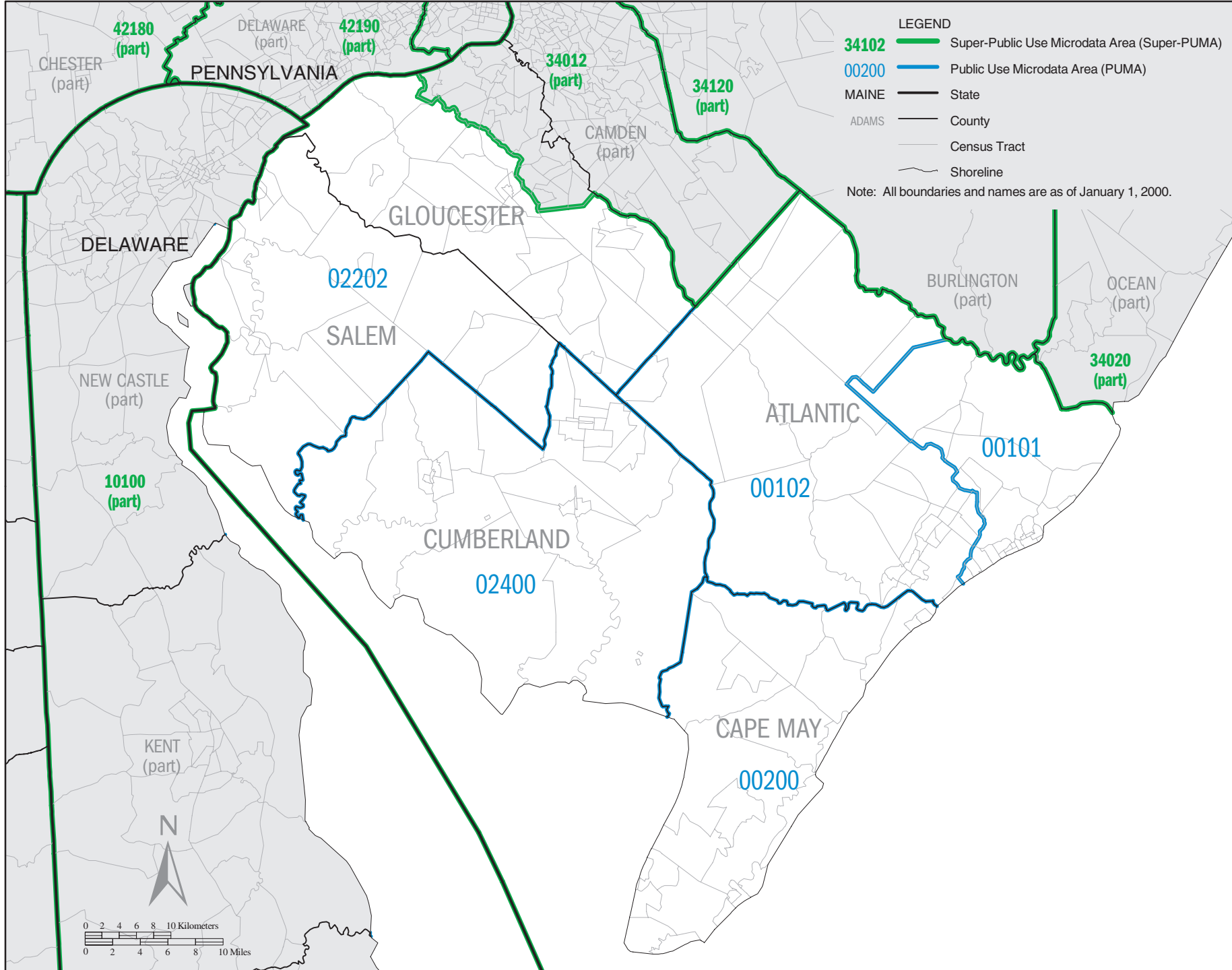
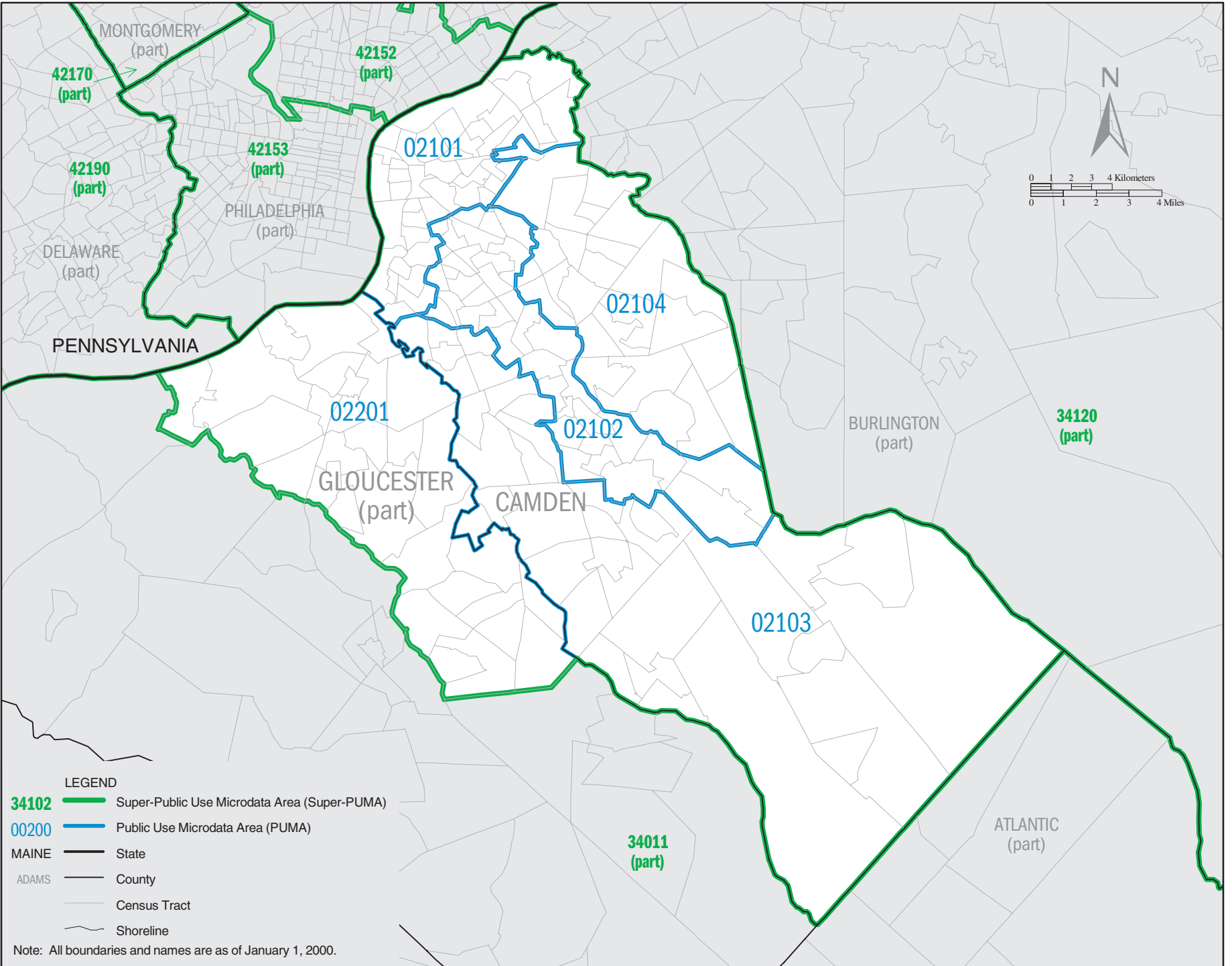


NEW JERSEY – Census 2000 Super–Public Use Microdata Areas (Super–PUMAs)

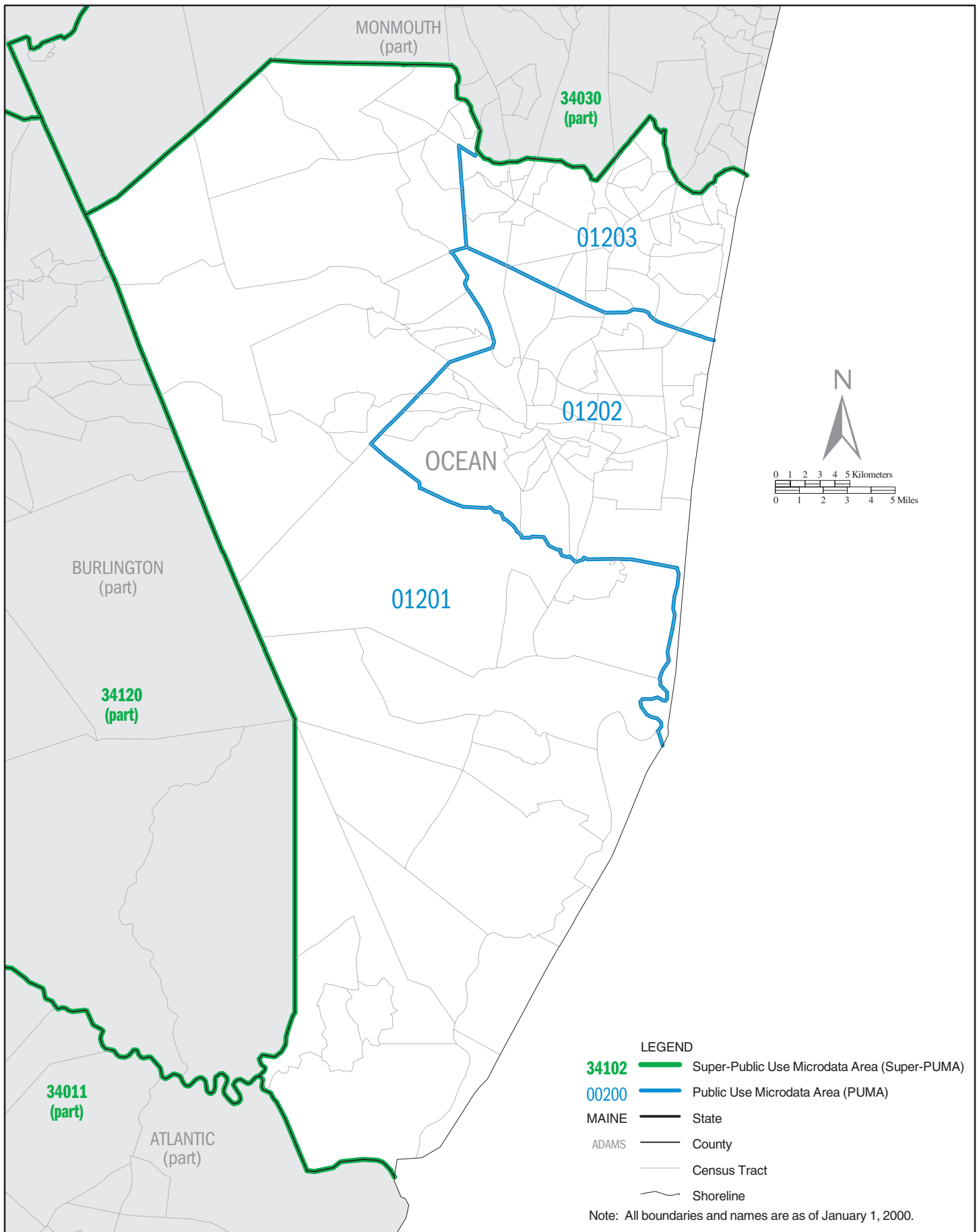


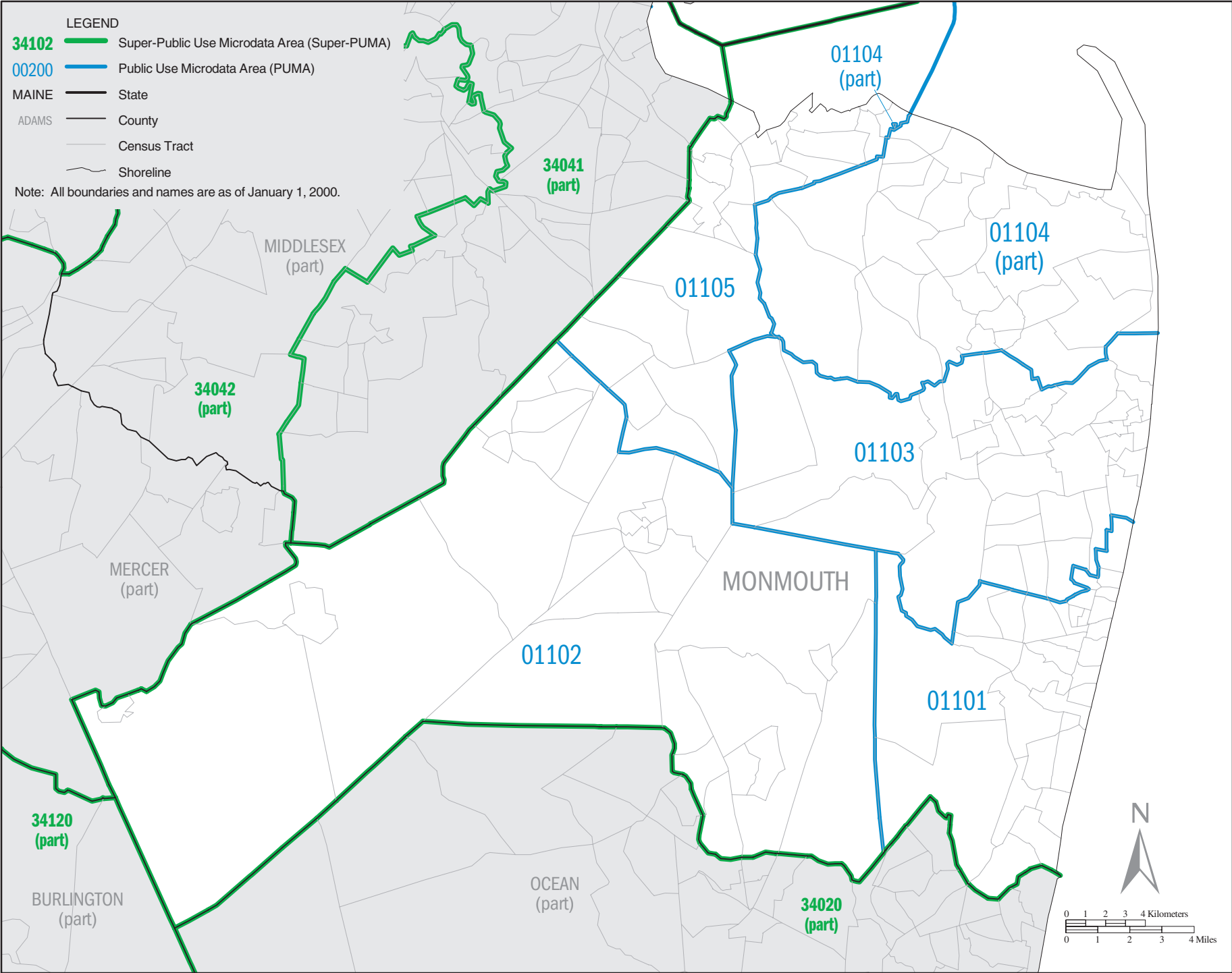




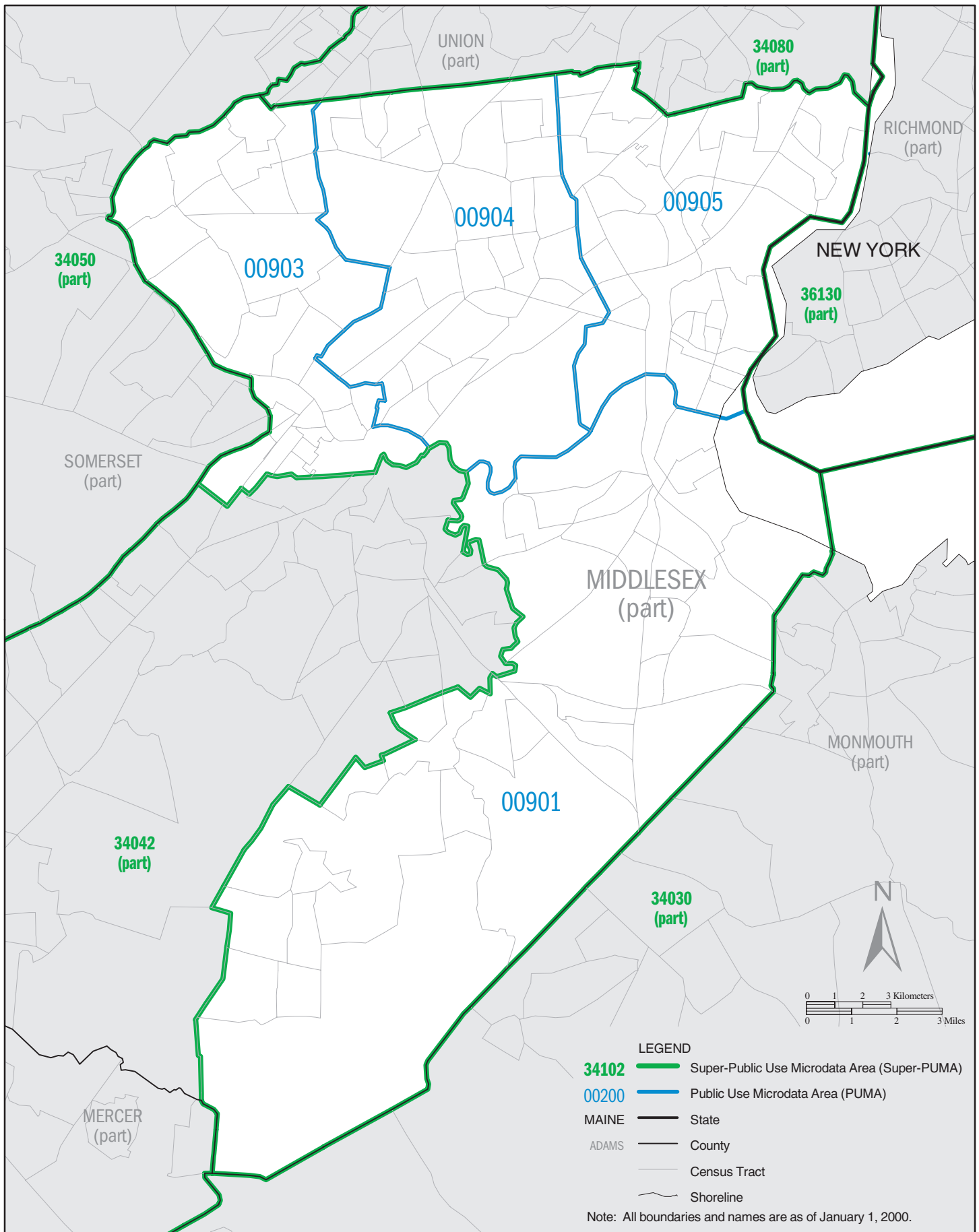
Note: All boundaries and names are as of January 1, 2000.

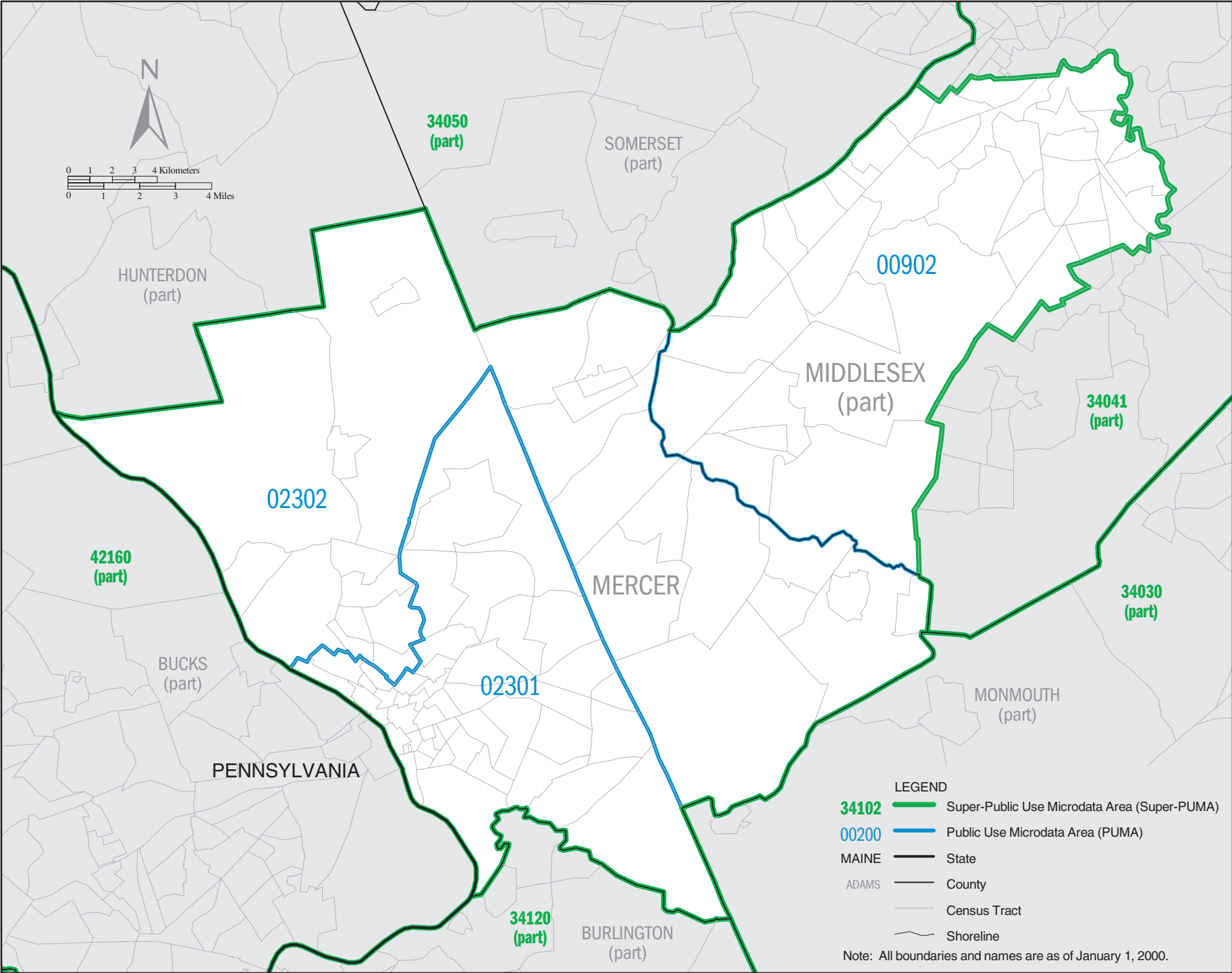
NEW JERSEY Super-PUMA 34020: Census 2000 Public Use Microdata Areas (PUMAs)

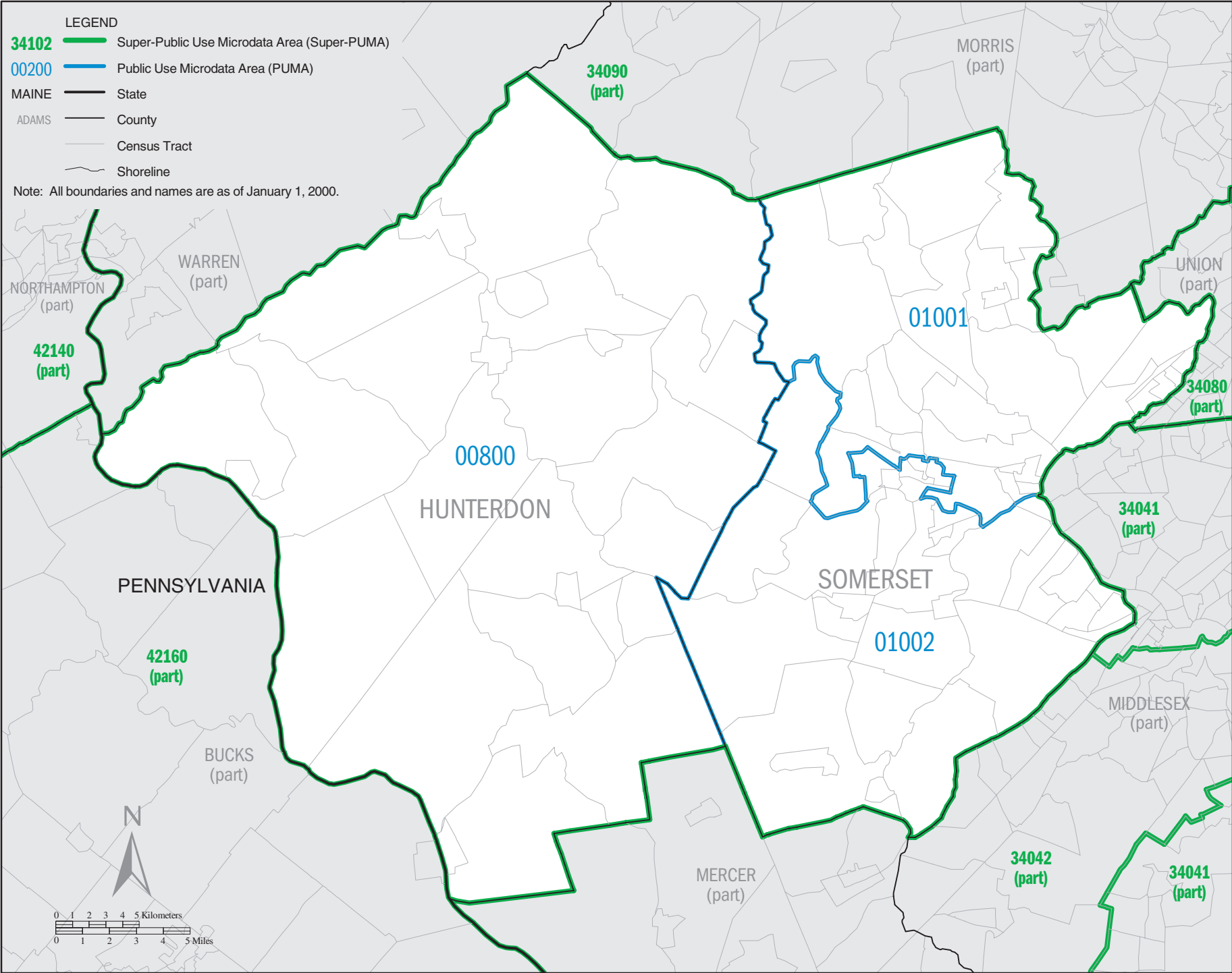




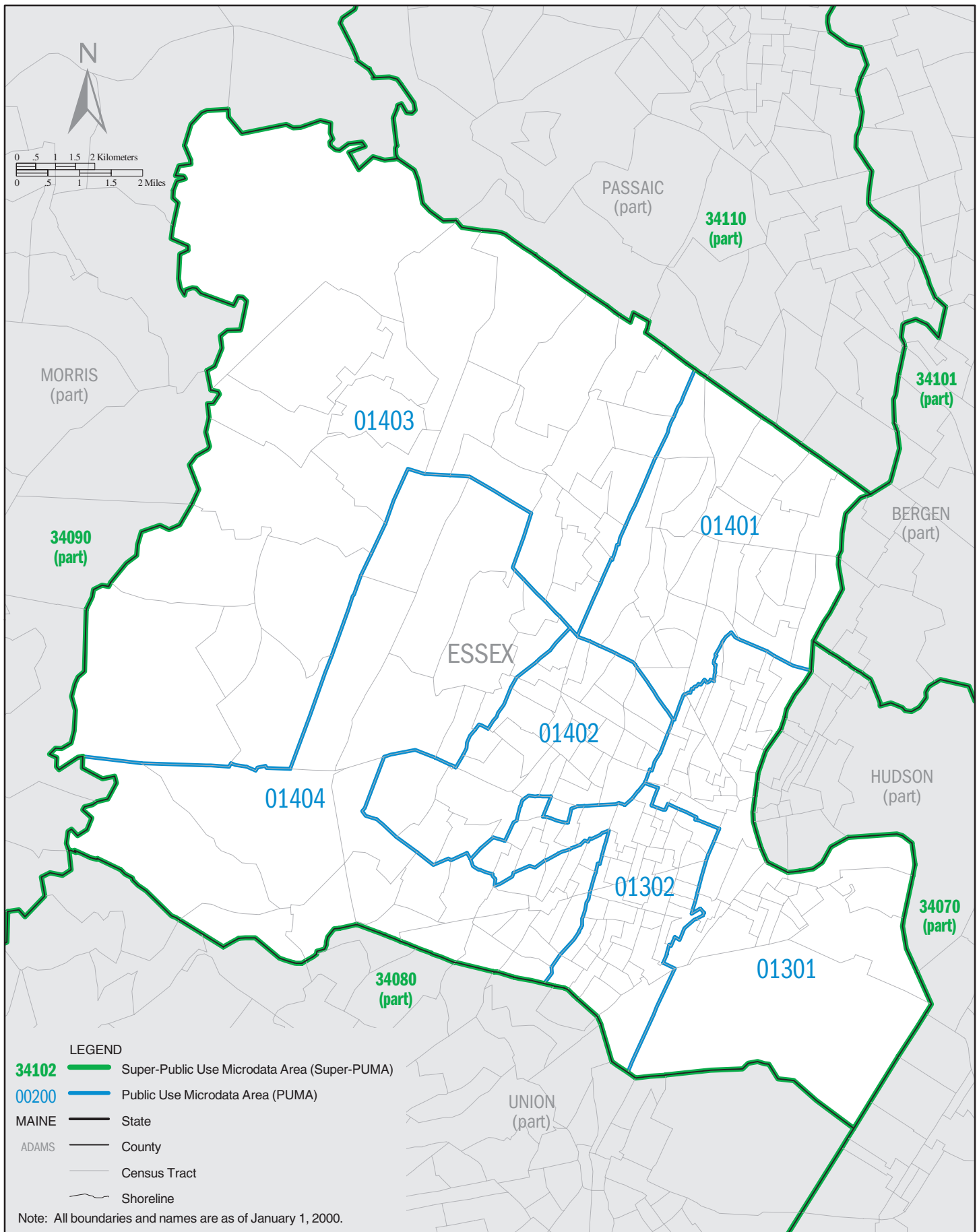
NEW JERSEY Super-PUMA 34041: Census 2000 Public Use Microdata Areas (PUMAs)



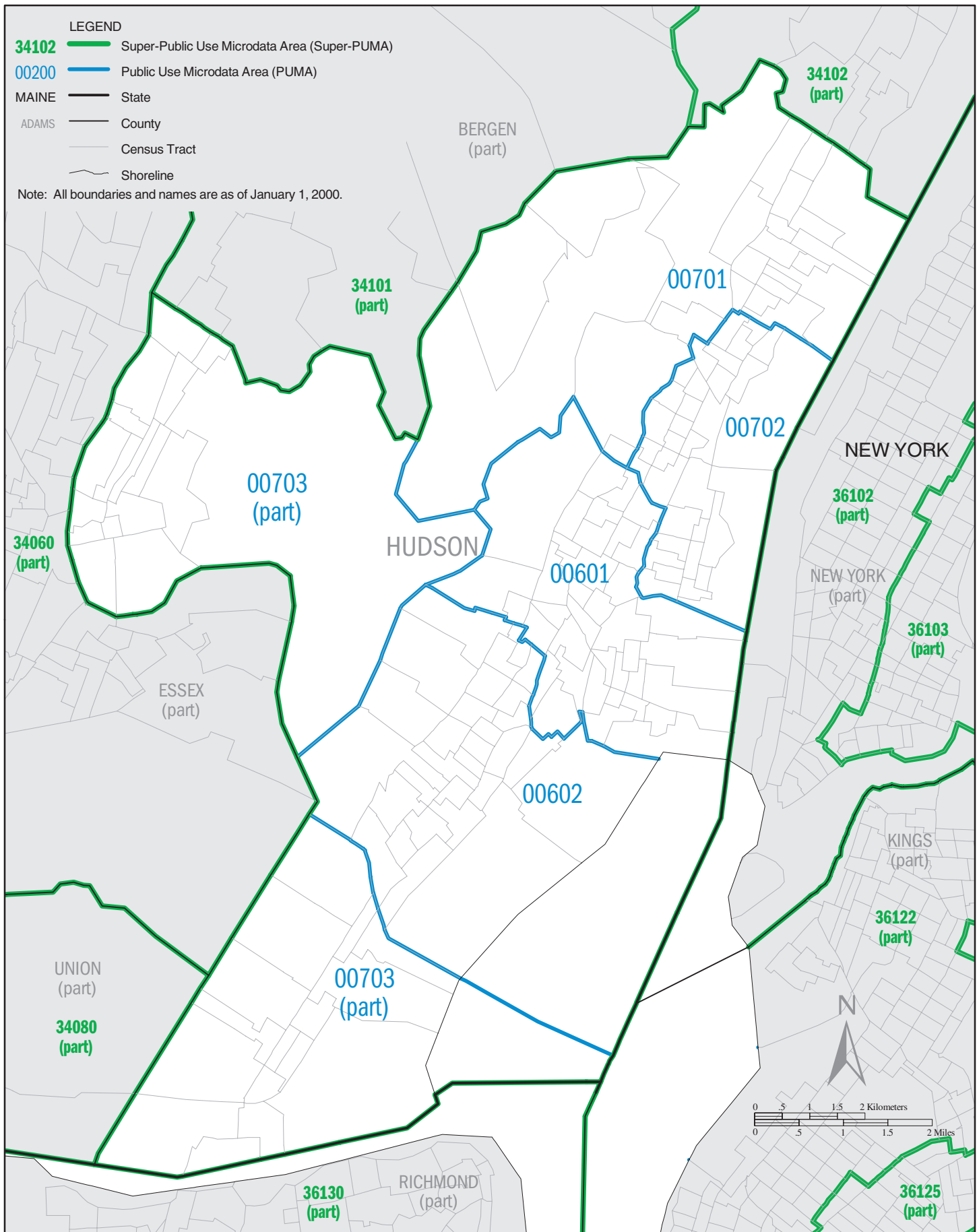


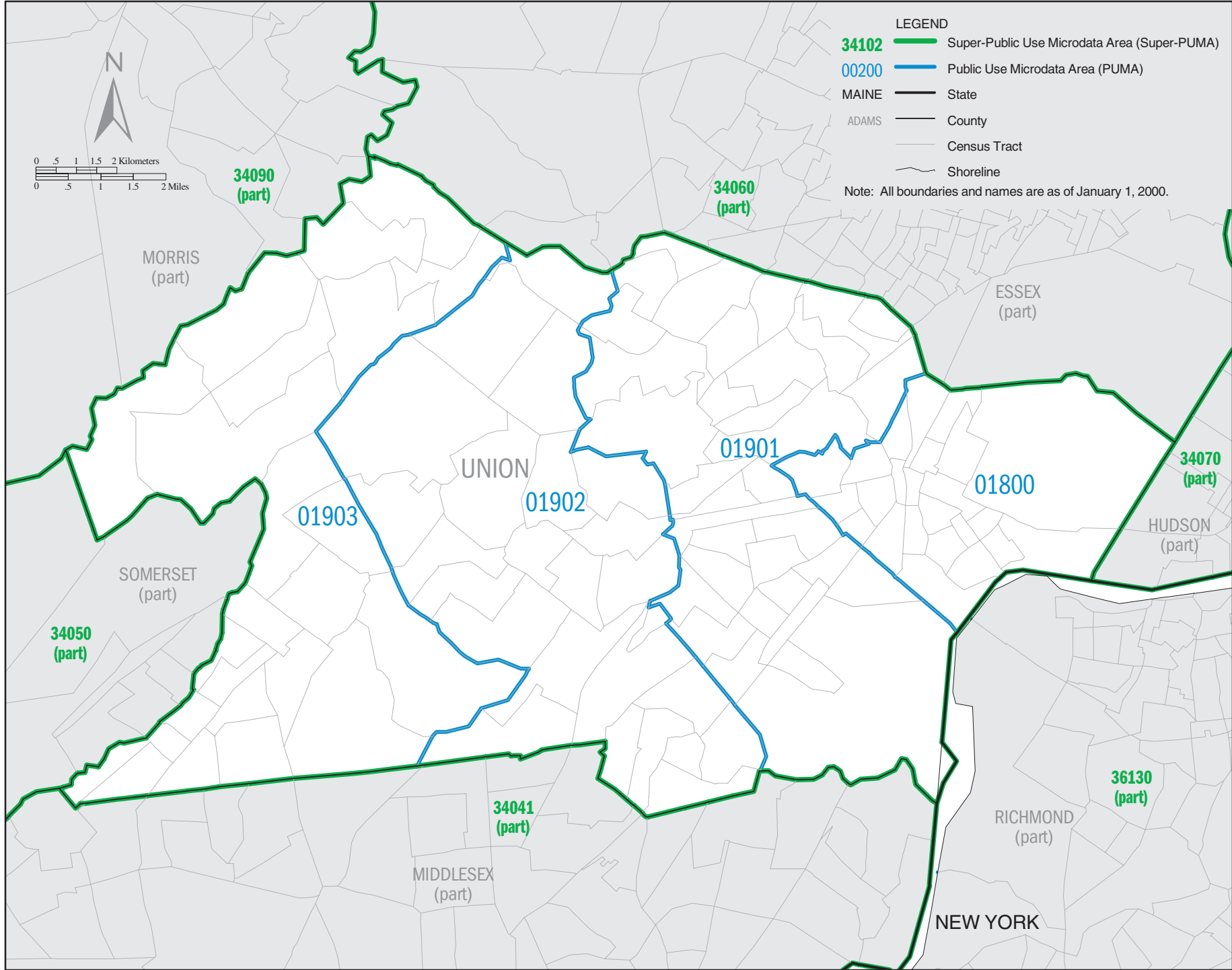


NEW JERSEY Super-PUMA 34060: Census 2000 Public Use Microdata Areas (PUMAs)

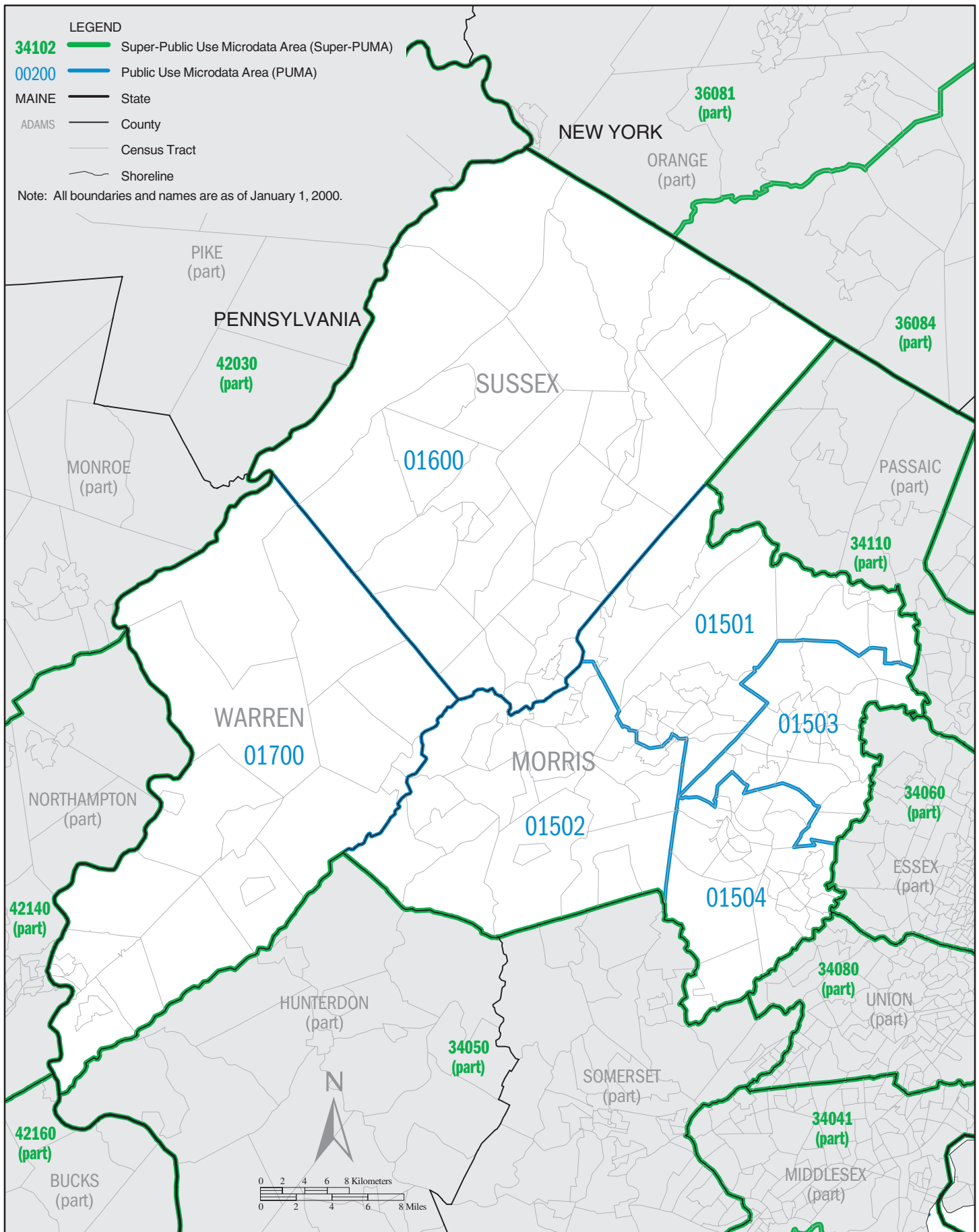


NEW JERSEY Super-PUMA 34070: Census 2000 Public Use Microdata Areas (PUMAs)

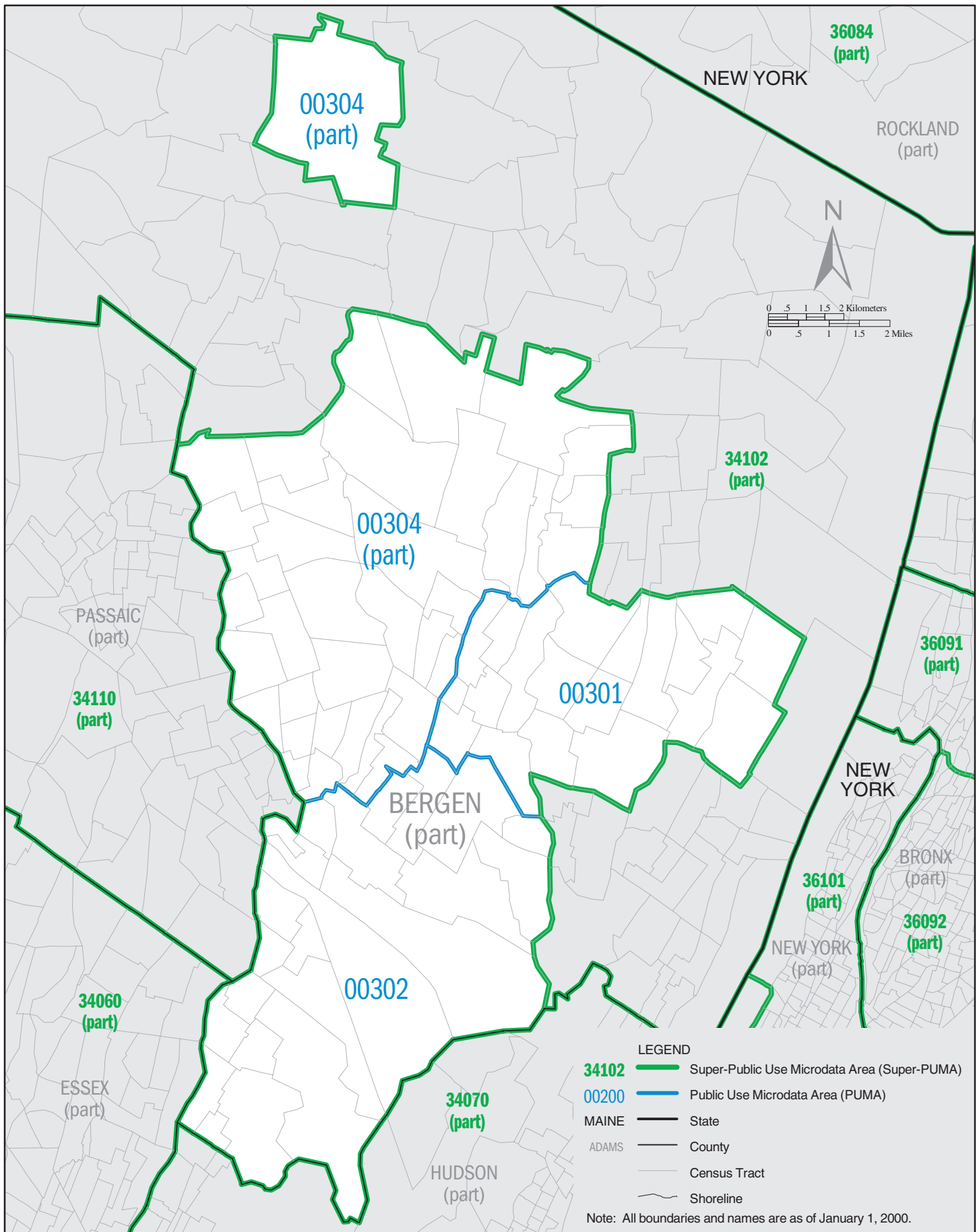




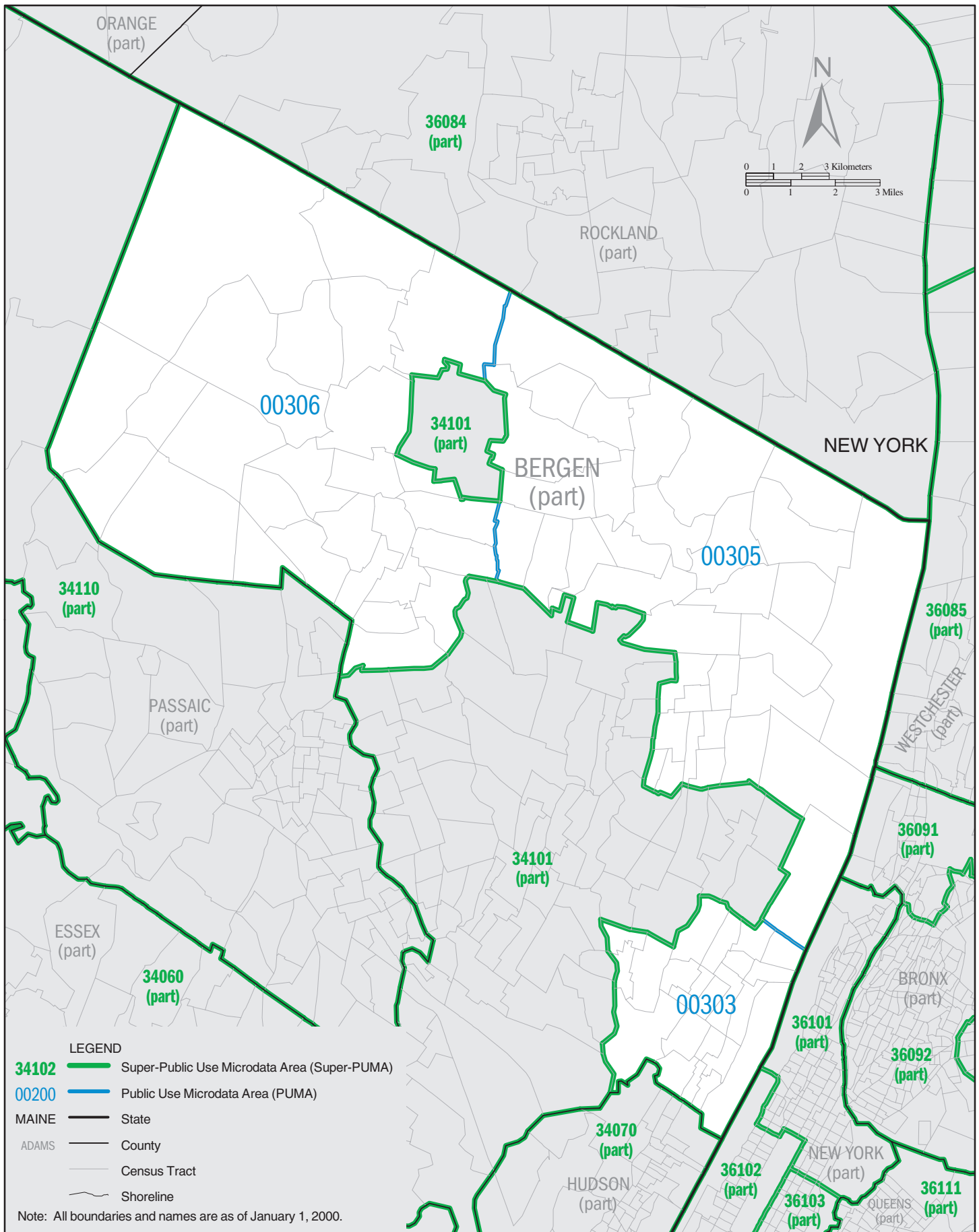
NEW JERSEY Super-PUMA 34090: Census 2000 Public Use Microdata Areas (PUMAs)



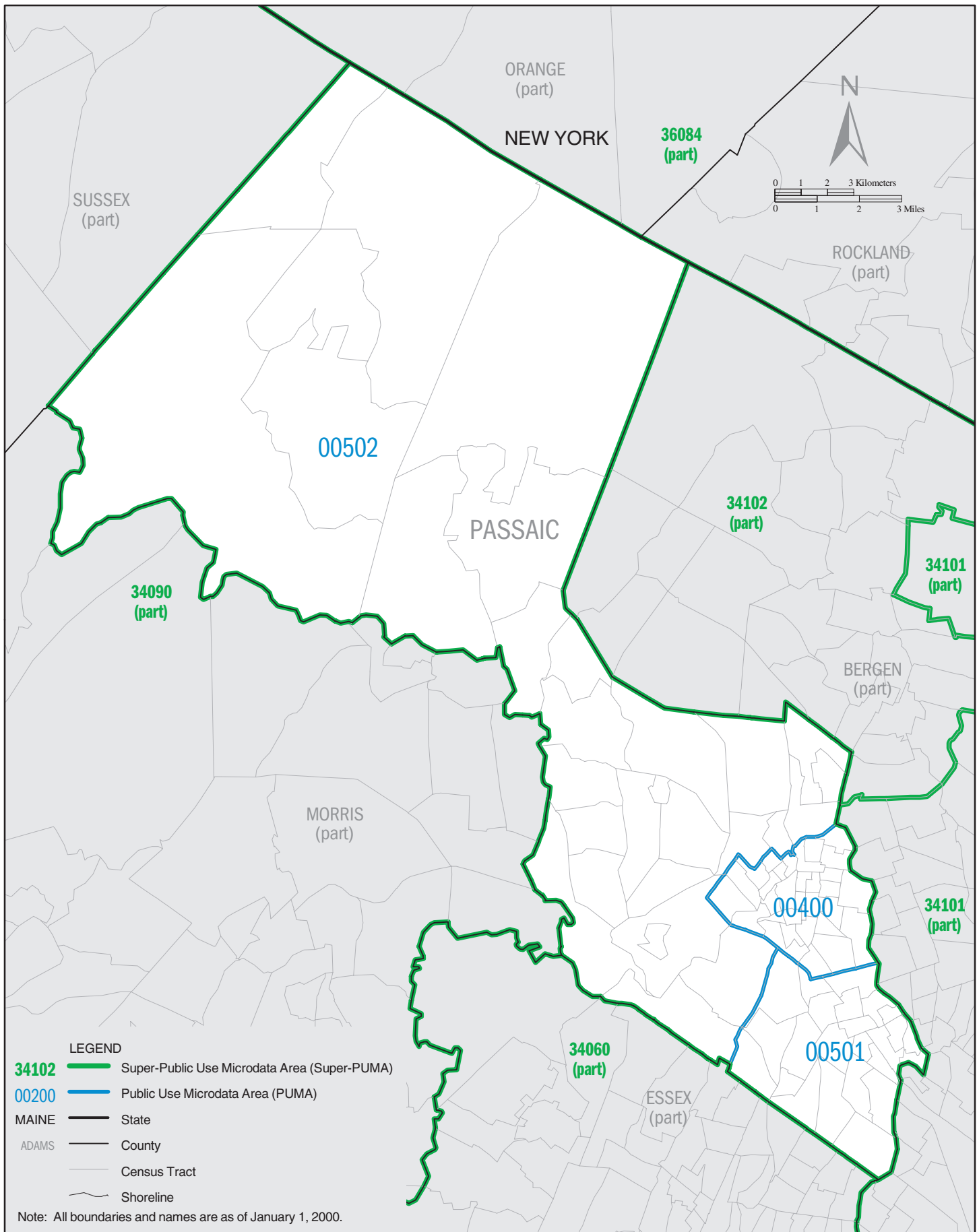
NEW JERSEY Super-PUMA 34101: Census 2000 Public Use Microdata Areas (PUMAs)



NEW JERSEY Super-PUMA 34102: Census 2000 Public Use Microdata Areas (PUMAs)



NEW JERSEY Super-PUMA 34110: Census 2000 Public Use Microdata Areas (PUMAs)



NEW JERSEY Super-PUMA 34120: Census 2000 Public Use Microdata Areas (PUMAs)

