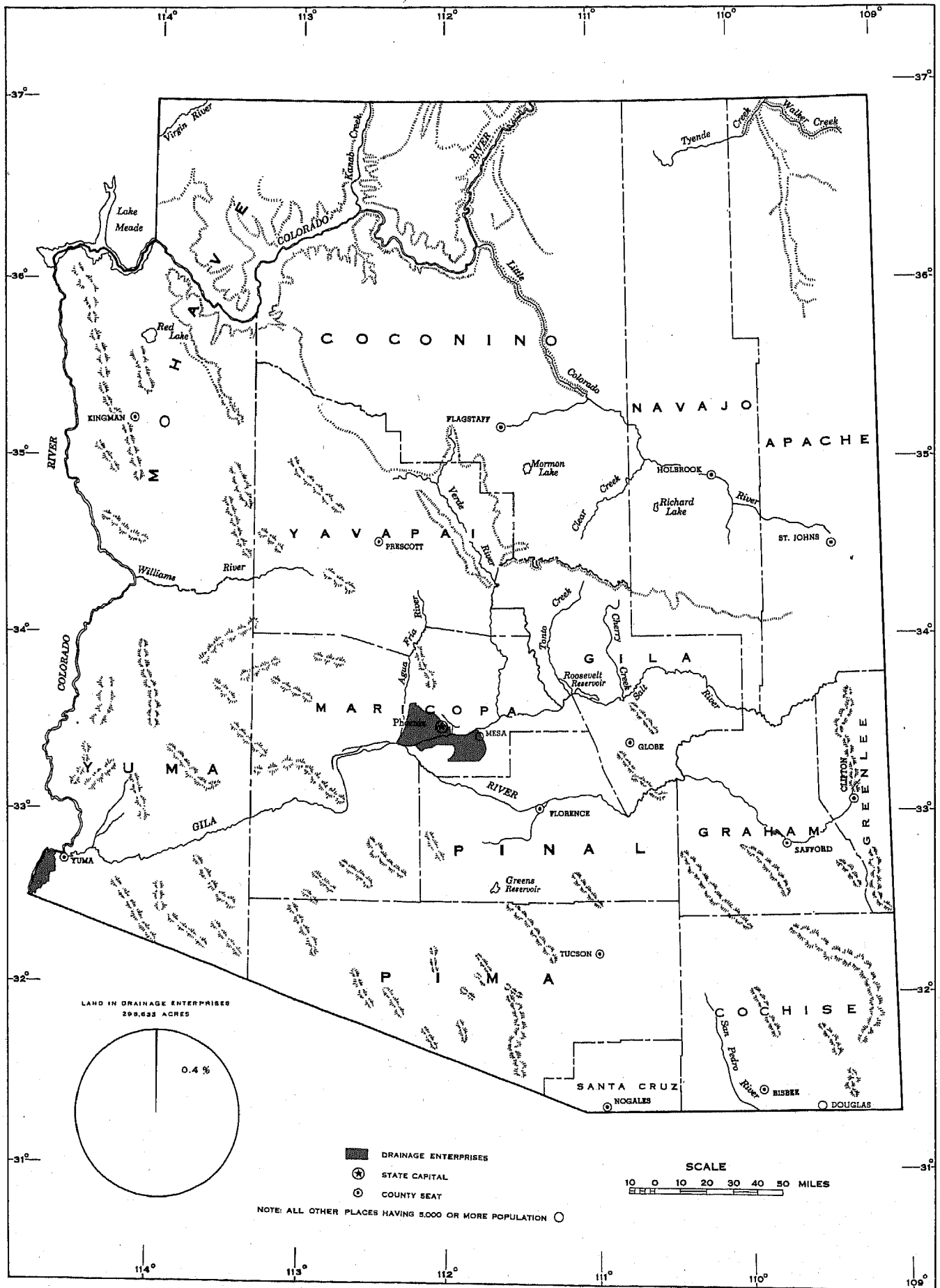


**REPORTS BY STATES WITH STATISTICS
FOR COUNTIES**

ARIZONA

Location of Land in Drainage Enterprises.



CENSUS OF DRAINAGE—ARIZONA

61

STATE TABLE 1.—SUMMARY OF DRAINAGE FOR THE STATE: JAN. 1, 1940, 1930, AND 1920

ITEM (See definitions in Introduction)	CENSUS OF—			INCREASE OR DECREASE (—)			
	1940	1930	1920	1930-1940		1920-1930	
				Amount	Percent	Amount	Percent
Approximate land area of State.....acres.....	72,681,200	72,838,400	72,838,400
Land in drainage enterprises.....acres.....	298,633	318,931	39,640	-20,298	-6.4	279,291	704.6
Improved.....acres.....	295,976	309,112	36,880	-13,136	-4.2	272,232	738.2
Unimproved:							
Timber and cut-over.....acres.....	75	-75	-100.0	75
Other.....acres.....	2,657	9,744	2,760	-7,087	-72.7	6,984	253.0
Drainage sufficient for normal crop.....acres.....	297,382	313,112	(¹)	-15,730	-5.0
Partly drained, for partial crop.....acres.....	951	1,694	(¹)	-743	-43.9
Unfit to raise any crop for lack of drainage.....acres.....	300	4,125	² 2,160	-3,825	-92.7	1,965	91.0
In occupied farms.....acres.....	296,276	304,802	(¹)	-8,526	-2.8
In planted crops.....acres.....	268,907	278,066	(¹)	-9,159	-3.3
Idle.....acres.....	23,247	39,219	(¹)	-15,972	-40.7
Available for settlement.....acres.....	1,519	(¹)	-1,519	-100.0
Open ditches, completed.....miles.....	100.8	349.4	32.6	-248.6	-71.2	316.8	971.8
Tile drains, completed.....miles.....	8.8	14.3	1.0	-5.5	-38.5	13.3
Drainage pumping plants, capacity.....horsepower.....	2,025	10,789	175	-8,764	-81.2	10,614	(³)
.....gal. per min.....	71,000	458,750	33,660	-387,750	-84.5	425,090	(³)
Capital invested in enterprises.....dollars.....	1,119,242	1,875,100	414,425	-755,858	-40.3	1,460,675	352.5
Average per acre.....dollars.....	2.60	5.88	10.45	-3.22	-54.8	-4.57	-43.7

¹ Not available.

² Reported as "Swampy, subject to overflow, seeped, or alkali."

³ Percent not shown when more than 1,000.

STATE TABLE 2.—AREA OF ENTERPRISES, BY SIZE: JAN. 1, 1940, 1930, AND 1920

SIZE	AREA OF ENTERPRISES ¹			Land in enterprises ² 1940
	1940	1930	1920	
	Acres	Acres	Acres	Acres
All enterprises.....	300,907	318,931	39,640	298,633
500 to 999 acres.....	640	640
1,000 to 1,999 acres.....	3,385	5,691	3,385
2,000 to 4,999 acres.....	2,274	9,000	2,274
5,000 to 9,999 acres.....
10,000 to 19,999 acres.....	20,800	30,000
20,000 to 49,999 acres.....	242,870	50,000	240,596
50,000 to 99,999 acres.....	52,378	242,000	52,378
100,000 to 199,999 acres.....
200,000 to 499,999 acres.....

¹ The sum of the areas in the individual enterprises, without deduction for overlapping.

² Overlapping eliminated by tabulating each enterprise according to its acreage not included in later enterprises.

STATE TABLE 3.—LAND AND CAPITAL INVESTED, BY CHARACTER OF ENTERPRISE, JAN. 1, 1940

CHARACTER OF ENTERPRISE	Land		Capital invested	
	Acres	Percent	Dollars	Percent
All enterprises.....	298,633	100.0	1,119,242	100.0
Drainage districts.....	5,659	1.9	165,500	14.8
Irrigation enterprises:				
Federal.....	52,378	17.5	722,742	64.6
Other.....	240,596	80.6	231,000	20.6

CENSUS OF DRAINAGE—ARIZONA

63

STATE TABLE 8.—LAND, CAPITAL INVESTED, INDEBTEDNESS, ARREARAGE IN PAYMENT OF BONDS, REDUCTION OF DEBT BY REFINANCING, AND ACREAGE DELINQUENT, 1940; DRAINAGE TAXES COLLECTED IN 1939; BY INDEBTEDNESS AND ARREARAGE, JAN. 1, 1940

FINANCIAL STATUS	Land in enterprises	Capital invested	Indebtedness	Arrearage in payment of bonds	Reduction of debt by refinancing	Delinquent in drainage taxes ¹	Drainage taxes collected in 1939
	Acres	Dollars	Dollars	Dollars	Dollars	Acres	Dollars
All enterprises.....	298,633	1,119,242	94,000	42,000	10,000	1,274	11,144
Enterprises in debt.....	5,659	165,500	94,000	42,000	10,000	1,274	11,144
In arrears, amount of arrearage stated.....	2,274	95,500	64,000	42,000	1,274	8,194
Collecting drainage taxes in 1939.....	2,274	95,500	64,000	42,000	1,274	8,194
Not in arrears.....	3,385	70,000	30,000	10,000	2,950
Collecting drainage taxes in 1939.....	3,385	70,000	30,000	10,000	2,950
Enterprises not in debt.....	292,974	953,742
No collections reported.....	292,974	953,742

¹If any land is delinquent in 2 or more overlapping enterprises, the acreage delinquent is too large by the amount of such duplication.

STATE TABLE 9.—LAND AND CAPITAL INVESTED, BY PRINCIPAL PURPOSE OF DRAINAGE, JAN. 1, 1940

PURPOSE OF DRAINAGE	Land		Capital invested	
	Acres	Percent	Dollars	Percent
All enterprises.....	298,633	100.0	1,119,242	100.0
Improvement of land already in farms.....	3,385	1.1	70,000	6.3
Reclamation of swamp land not previously in farms.....	2,274	0.8	95,500	8.5
Removal of alkali or seepage from irrigation.....	292,974	98.1	953,742	85.2

STATE TABLE 10.—LAND AND CAPITAL INVESTED, BY DATE OF ORGANIZATION, JAN. 1, 1940

DATE OF ORGANIZATION	Land ¹		Area of enterprises		Capital invested	
	Acres	Percent	Total acres ²	Overlapped acres	Dollars	Percent
All enterprises.....	298,633	100.0	300,907	2,274	1,119,242	100.0
1900-1904.....	240,596	80.6	242,870	2,274	231,000	20.6
1910-1914.....	52,378	17.5	52,378	722,742	64.6
1915-1919.....	1,800	0.6	1,800	40,000	3.6
1920-1924.....	3,859	1.3	3,859	125,500	11.2

¹Land included in more than 1 enterprise is tabulated only in the last organized.

²The sum of the areas of the individual enterprises.

STATE TABLE 11.—DRAINAGE CONDITION, DEVELOPMENT, AND USE OF LAND IN ENTERPRISES, BY DATE OF ORGANIZATION, 1939

DATE OF ORGANIZATION	Land in all enterprises ¹	DRAINAGE CONDITION			DEVELOPMENT			USE OF LAND					
		Drained		Partly drained	Undrained	Improved land	Timber and cut-over land	Other unimproved land	In occupied farms		In planted crops	Idle	Land available for settlement
	Acres	Acres	Per-cent	Acres	Acres	Acres	Per-cent	Acres	Acres	Per-cent	Acres	Acres	Acres
All enterprises..	298,633	297,382	99.6	951	300	295,076	98.1	2,657	296,276	99.2	268,907	23,247
1900-1904.....	240,596	240,596	100.0	240,596	100.0	240,596	100.0	219,159	21,437
1910-1914.....	52,378	52,378	100.0	50,021	95.5	2,357	50,021	95.5	44,389	1,510
1915-1919.....	1,800	1,500	83.3	300	1,500	83.3	300	1,800	100.0	1,500	300
1920-1924.....	3,859	2,908	75.4	951	3,859	100.0	3,859	100.0	3,859

¹Land included in more than 1 enterprise is tabulated only in the last organized.

CENSUS OF DRAINAGE—ARIZONA

STATE TABLE 12.—COST OF OPERATION AND MAINTENANCE, BY TYPE OF DRAINAGE, 1939

TYPE OF DRAINAGE	Land in all enterprises	LAND REPORTING ON COST OF MAINTENANCE AND OPERATION			COST REPORTED		
		Total	Some cost	No cost	Total amount	Per acre on—	
						Total reporting	Area incurring
All enterprises.....	Acres 298,633	Acres 298,633	Acres 55,763	Acres 242,870	Dollars 6,400	Dollars 0.02	Dollars 0.11
Gravity drainage only.....	5,659	5,659	3,385	2,274	400	0.07	0.12
Open ditches only.....	2,274	2,274	2,274
Open ditches and tile drains.....	1,800	1,800	1,800	250	0.13	0.13
Open ditches, tile drains, and levees.....	1,585	1,585	1,585	150	0.09	0.09
Pumping for all or part of drainage.....	292,974	292,974	52,378	240,596	6,000	0.02	0.11
All drainage by pumping.....	52,378	52,378	52,378	6,000	0.11	0.11
Part pumping and part gravity.....	240,596	240,596	240,596

STATE TABLE 13.—LAND AND CAPITAL INVESTED, BY METHOD OF MAINTENANCE AND BY WHETHER MAINTENANCE IS SYSTEMATIC, JAN. 1, 1940

MAINTENANCE	Land		Capital invested	
	Acres	Percent	Dollars	Percent
All enterprises.....	298,633	100.0	1,119,242	100.0
Method, by district forces.....	298,633	100.0	1,119,242	100.0
Whether systematic:				
Reporting "yes".....	296,359	99.2	1,023,742	91.5
Not reporting.....	2,274	0.8	95,500	8.5

STATE TABLE 14.—LAND, CAPITAL INVESTED, AND DRAINAGE WORKS, BY OWNERSHIP OF POWER EQUIPMENT FOR MAINTENANCE, 1940

ITEM	All enterprises	ENTERPRISES OWNING POWER EQUIPMENT	
		Amount	Percent
Land in enterprises.....acres....	298,633	52,378	17.5
Capital invested.....dollars..	1,119,242	722,742	64.6
Drainage works:			
Open ditches.....miles....	100.8	57.3	56.8
Tile drains.....miles....	8.8
Levees.....miles....	24.5	24.0	98.0

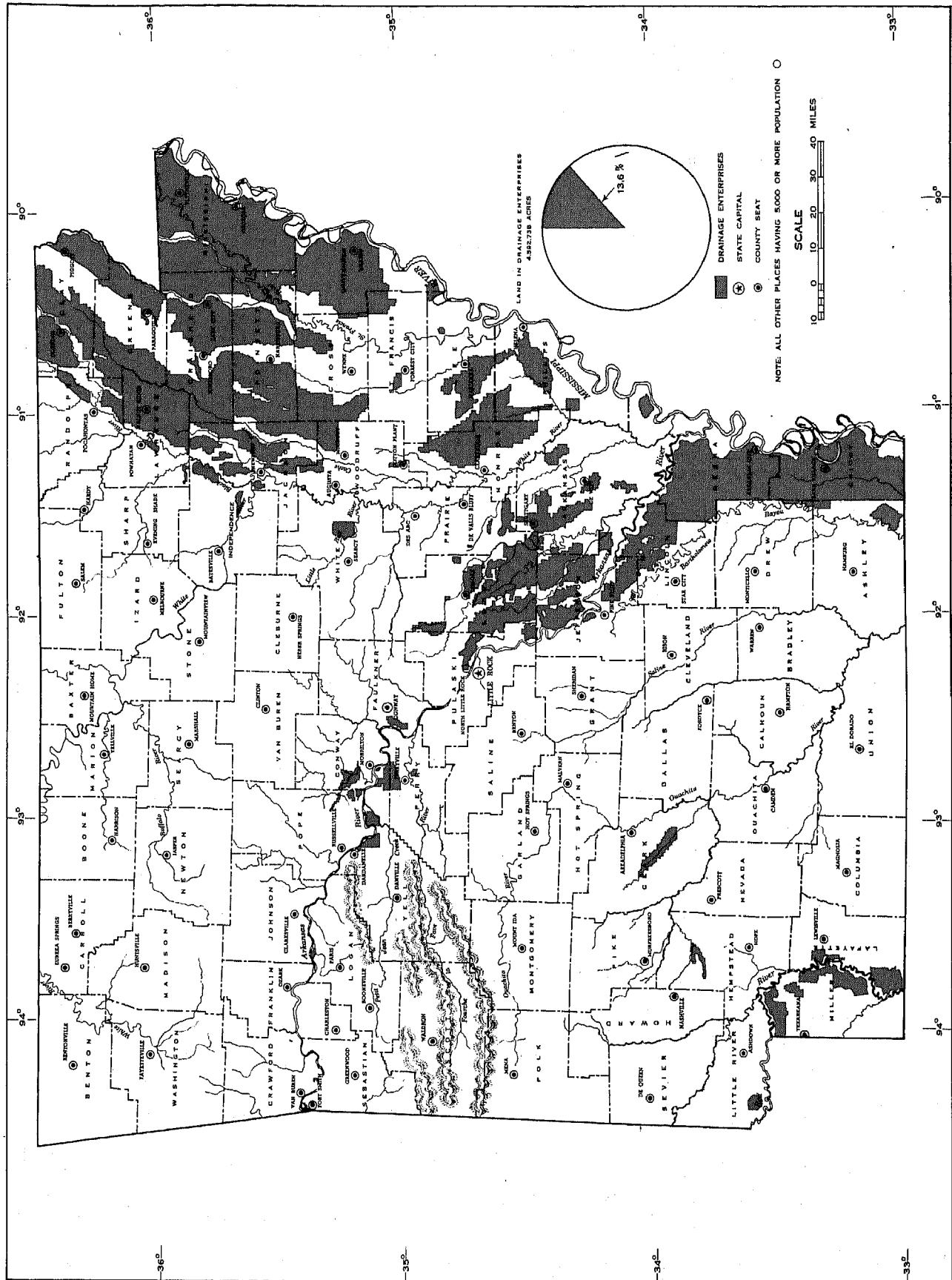
STATE TABLE 15.—LAND, CAPITAL INVESTED, AND DRAINAGE WORKS, BY FLOOD PROTECTION FROM LEVEES OF AN OUTSIDE AGENCY, 1940

ITEM	All enterprises	ENTERPRISES PROTECTED BY OUTSIDE AGENCY	
		Amount	Percent
Land in enterprises.....acres....	298,633	¹ 52,378	17.5
Capital invested.....dollars..	1,119,242	722,742	64.6
Drainage works:			
Open ditches.....miles....	100.8	57.3	56.8
Tile drains.....miles....	8.8
Levees.....miles....	24.5	24.0	98.0

¹The land actually dependent upon outside agencies for protection is 50,000 acres, which is 95.5 percent of all land in these protected enterprises.

ARKANSAS

LOCATION OF LAND IN DRAINAGE ENTERPRISES



CENSUS OF DRAINAGE — ARKANSAS

71

STATE TABLE 14.—LAND, CAPITAL INVESTED, AND DRAINAGE WORKS, BY OWNERSHIP OF POWER EQUIPMENT FOR MAINTENANCE, 1940

ITEM	All enterprises	ENTERPRISES OWNING POWER EQUIPMENT	
		Amount	Percent
Land in enterprises.....acres....	4,592,798	573,190	12.5
Capital invested.....dollars..	39,450,754	13,364,947	33.9
Drainage works:			
Open ditches.....miles....	6,030.3	1,492.9	24.8
Tile drains.....miles....	10.8	7.0	64.8
Levees.....miles....	332.4	180.0	54.2

STATE TABLE 15.—LAND, CAPITAL INVESTED, AND DRAINAGE WORKS, BY FEDERAL AGENCY GIVING AID IN MAINTENANCE, 1940

AGENCY	Land in enterprises	Capital invested	DRAINAGE WORKS		
			Ditches	Tile	Levees
All enterprises reporting Federal aid received.....	Acres 1,050,710	Dollars 16,917,826	Miles 1,713.1	Miles	Miles 170.1
Work Projects Administration.....	546,786	3,750,682	536.6	0.1
Corps of Engineers, U.S.A.....	14,358	199,800	14.0	14.0
W.P.A. and Corps of Engineers.....	52,904	654,800	60.0
Other kind or combination.....	436,662	12,312,544	1,102.5	153.0

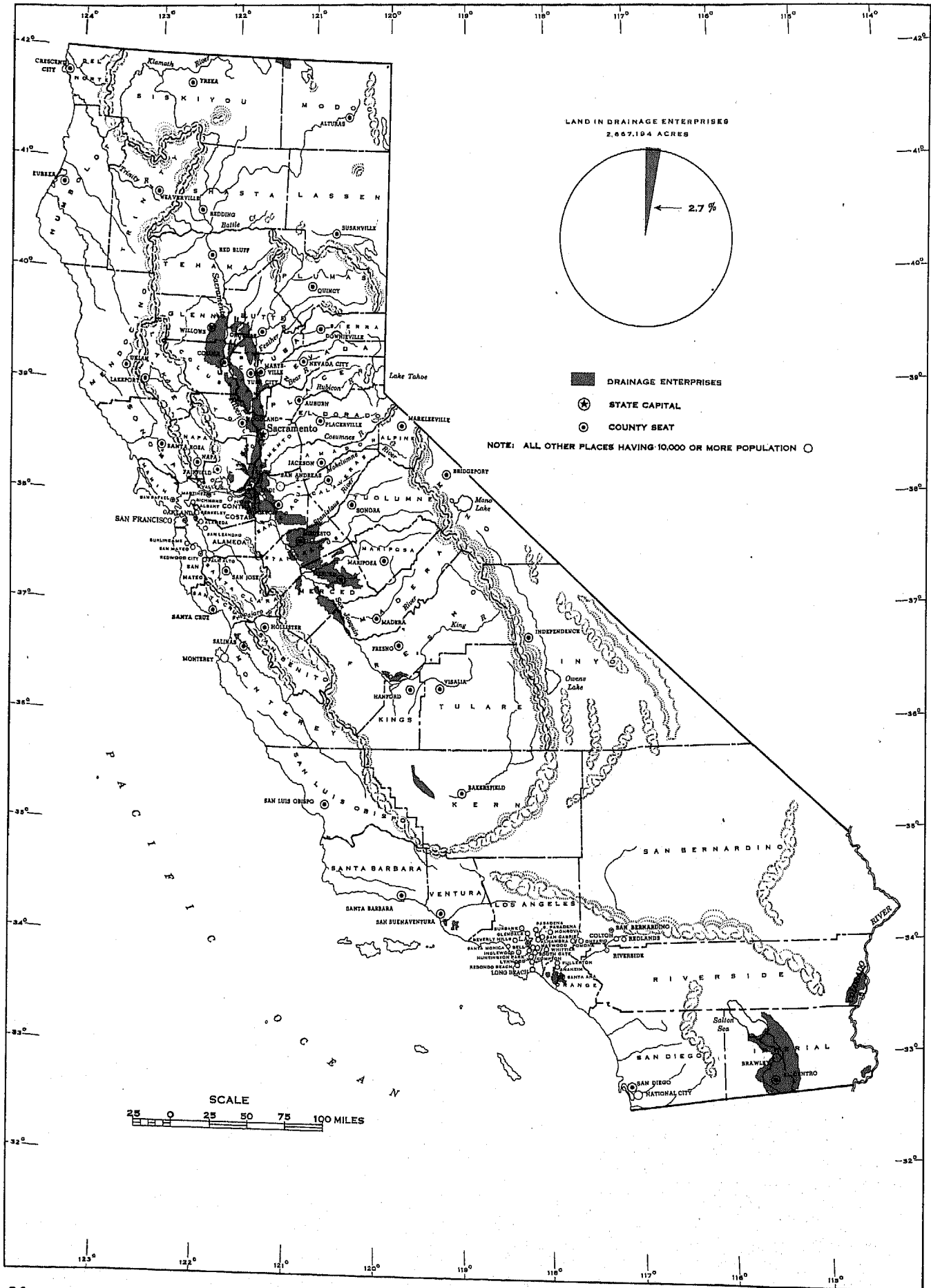
STATE TABLE 16.—LAND, CAPITAL INVESTED, AND DRAINAGE WORKS, BY FLOOD PROTECTION FROM LEVEES OF AN OUTSIDE AGENCY, 1940

ITEM	All enterprises	ENTERPRISES PROTECTED BY OUTSIDE AGENCY	
		Amount	Percent
Land in enterprises.....acres....	4,592,798	1,207,000	45.1
Capital invested.....dollars..	39,450,754	19,114,539	48.4
Drainage works:			
Open ditches.....miles....	6,030.3	3,011.1	50.0
Tile drains.....miles....	10.8	7.0	64.8
Levees.....miles....	332.4	177.0	53.2

¹The land actually dependent upon outside agencies for protection is 2,058,246 acres, which is 99.4 percent of all land in these protected enterprises.

CALIFORNIA

LOCATION OF LAND IN DRAINAGE ENTERPRISES



CENSUS OF DRAINAGE—CALIFORNIA

STATE TABLE 13.—LAND AND CAPITAL INVESTED, BY METHOD OF MAINTENANCE AND BY WHETHER MAINTENANCE IS SYSTEMATIC, JAN. 1, 1940

MAINTENANCE	Land		Capital invested	
	Acres	Percent	Dollars	Percent
All enterprises.....	2,667,194	100.0	70,144,044	100.0
Method:				
By district forces.....	1,896,442	71.2	40,210,224	57.3
By contract.....	447,249	16.7	20,111,591	28.7
Work apportioned to landowners.....	292,693	11.0	8,081,349	12.4
"None," or not reporting.....	28,810	1.1	1,140,880	1.6
Whether systematic:				
Reporting "yes".....	2,411,101	90.4	57,297,960	85.9
Reporting "no".....	256,093	9.6	2,846,084	4.1

STATE TABLE 14.—LAND, CAPITAL INVESTED, AND DRAINAGE WORKS, BY OWNERSHIP OF POWER EQUIPMENT FOR MAINTENANCE, 1940

ITEM	All enterprises	ENTERPRISES OWNING POWER EQUIPMENT	
		Amount	Percent
Land in enterprises.....acres....	2,667,194	1,635,812	61.3
Capital invested.....dollars..	70,144,044	37,269,717	53.1
Drainage works:			
Open ditches.....miles....	6,091.1	3,762.2	61.8
Tile drains.....miles....	326.2	178.9	54.8
Levees.....miles....	1,537.6	507.5	36.9

STATE TABLE 15.—LAND, CAPITAL INVESTED, AND DRAINAGE WORKS, BY FEDERAL AGENCY GIVING AID IN MAINTENANCE, 1940

AGENCY	Land in enterprises	Capital invested	DRAINAGE WORKS		
			Ditches	Tile	Levees
All enterprises reporting Federal aid received.....	Acres 236,666	Dollars 13,426,797	Miles 702.7	Miles 79.1	Miles 199.2
Work Projects Administration.....	150,801	10,204,847	618.9	77.9	163.7
Corps of Engineers, U.S.A.....	77,865	1,659,700	53.5	18.5
Other kind or combination.....	8,000	1,562,250	30.3	1.2	17.0

STATE TABLE 16.—LAND, CAPITAL INVESTED, AND DRAINAGE WORKS, BY FLOOD PROTECTION FROM LEVEES OF AN OUTSIDE AGENCY, 1940

ITEM	All enterprises	ENTERPRISES PROTECTED BY OUTSIDE AGENCY	
		Amount	Percent
Land in enterprises.....acres....	2,667,194	¹ 502,039	18.8
Capital invested.....dollars..	70,144,044	18,673,359	26.6
Drainage works:			
Open ditches.....miles....	6,091.1	1,114.7	18.3
Tile drains.....miles....	326.2	86.3	26.4
Levees.....miles....	1,537.6	210.9	13.7

¹The land actually dependent upon outside agencies for protection is 281,441 acres, which is 58.0 percent of all land in these protected enterprises.

CENSUS OF DRAINAGE—COLORADO

93

STATE TABLE 5.—PUMPING PLANTS AND LAND SERVED, BY KIND OF POWER: JAN. 1, 1940, 1930, AND 1920

KIND OF POWER	Enterprises ¹	CAPACITY			Land served
		Engine or motor		Pump	
	Number	Hp.	Percent	G. p. m.	Acres
All pumping enterprises ²1940..	1	6	100.0	900	80
Electric and water.....1940..	1	6	100.0	900	80

¹ Where there are less than 3 enterprises reporting, data are shown only by written permission of each enterprise affected.

² No enterprises operating pumping plants reported prior to 1940.

STATE TABLE 6.—PUMPING PLANTS AND LAND SERVED, BY KIND OF PUMP: JAN. 1, 1940 AND 1930

KIND OF PUMP	PUMPS			Engine or motor capacity	Land served
	Number	Capacity			
		G. p. m.	Percent	Hp.	Acres
All pumping enterprises ¹1940..	4	900	100.0	6	80
Centrifugal and plunger.....1940..	4	900	100.0	6	80

¹ No enterprises operating pumping plants reported prior to 1940.

STATE TABLE 7.—LAND, CAPITAL INVESTED, AND AREA DELINQUENT IN DRAINAGE TAXES, BY ARREARAGE IN PAYMENT OF OBLIGATIONS: JAN. 1, 1940 AND 1930

FINANCIAL STATUS	LAND IN ENTERPRISES				CAPITAL INVESTED				AREA DELINQUENT ¹	
	1940		1930		1940		1930		1940	1930
	Acres	Percent	Acres	Percent	Dollars	Percent	Dollars	Percent	Acres	Acres
All enterprises.....	468,322	100.0	368,719	100.0	4,860,317	100.0	4,358,866	100.0	30,083	24,184
Enterprises in arrears.....	67,040	14.3	53,195	14.5	965,782	20.2	731,938	16.8	24,233	18,411
With some delinquent land.....	52,278	11.1	46,895	12.7	743,782	15.2	717,238	16.5	24,233	18,411
With no delinquent land.....	5,462	1.2	6,500	1.8	102,000	2.1	14,700	0.3
With no report on delinquency.....	9,300	2.0	140,000	2.9
Enterprises not in arrears.....	400,478	85.5	313,524	85.5	3,892,535	79.4	3,626,928	83.2	5,046	5,753
With some delinquent land.....	55,442	11.8	70,026	19.1	688,712	14.1	1,329,850	30.5	5,046	5,753
With no delinquent land.....	345,036	73.7	243,498	66.4	3,193,823	65.3	2,297,078	52.7
Enterprises not reporting on arrearage—with some delinquent land.....	804	0.2	22,000	0.4	804

¹ If any land is delinquent in 2 or more overlapping enterprises, the acreage delinquent is too large by the amount of such duplication.

STATE TABLE 8.—LAND, CAPITAL INVESTED, INDEBTEDNESS, ARREARAGE IN PAYMENT OF BONDS, REDUCTION OF DEBT BY REFINANCING, AND ACREAGE DELINQUENT, 1940; DRAINAGE TAXES COLLECTED IN 1939; BY INDEBTEDNESS AND ARREARAGE, JAN. 1, 1940

FINANCIAL STATUS	Land in enterprises	Capital invested	Indebtedness	Arrearage in payment of bonds	Reduction of debt by refinancing	Delinquent in drainage taxes ¹	Drainage taxes collected in 1939
	Acres	Dollars	Dollars	Dollars	Dollars	Acres	Dollars
All enterprises.....	468,322	4,860,317	1,853,395	466,521	349,695	30,083	102,433
Enterprises in debt.....	252,641	3,105,192	1,853,395	466,521	349,695	29,603	79,091
In arrears, amount of arrearage stated.....	67,040	985,782	625,701	466,521	6,900	24,233	26,647
Collecting drainage taxes in 1939.....	23,432	404,400	309,001	194,821	10,039	26,647
No collections reported.....	43,608	581,392	317,700	271,700	6,900	14,194
Not in arrears.....	184,797	2,097,410	1,216,194	342,795	4,566	52,444
Collecting drainage taxes in 1939.....	162,377	1,684,610	1,089,194	168,285	4,566	52,444
No collections reported.....	22,420	412,800	159,000	174,500
Not reporting as to arrears.....	804	22,000	11,500	804
No collections reported.....	804	22,000	11,500	804
Enterprises not in debt.....	215,681	1,785,125	480	23,342
Collecting drainage taxes in 1939.....	61,303	550,791	23,342
No collections reported.....	154,378	1,234,334	480

¹ If any land is delinquent in 2 or more overlapping enterprises, the acreage delinquent is too large by the amount of such duplication.

STATE TABLE 9.—LAND AND CAPITAL INVESTED, BY PRINCIPAL PURPOSE OF DRAINAGE, JAN. 1, 1940

PURPOSE OF DRAINAGE	Land		Capital invested	
	Acres	Percent	Dollars	Percent
All enterprises.....	468,322	100.0	4,860,317	100.0
Improvement of land already in farms.....	151,202	32.3	1,056,165	21.6
Reclamation of swamp land not previously in farms.....	7,715	1.6	172,000	3.5
Removal of alkali or seepage from irrigation.....	309,405	66.1	3,632,152	74.9

CENSUS OF DRAINAGE—COLORADO

STATE TABLE 10.—LAND AND CAPITAL INVESTED, BY DATE OF ORGANIZATION, JAN. 1, 1940

DATE OF ORGANIZATION	Land ¹		Area of enterprises		Capital invested	
	Acres	Percent	Total acres ²	Overlapped acres	Dollars	Percent
All enterprises.....	468,322	100.0	469,294	972	4,890,317	100.0
1900-1904.....	6,320	1.4	6,720	400	45,500	0.9
1905-1909.....	63,833	13.6	63,833	239,910	4.9
1910-1914.....	20,820	4.4	20,820	190,000	3.9
1915-1919.....	122,309	26.1	122,309	1,630,769	33.4
1920-1924.....	164,614	35.2	165,186	572	2,152,471	44.0
1925-1929.....	15,467	3.3	15,467	169,046	3.4
1930-1934.....	2,852	0.6	2,852	33,700	0.7
1935-1939.....	72,107	15.4	72,107	428,921	8.8

¹ Land included in more than 1 enterprise is tabulated only in the last organized.² The sum of the areas of the individual enterprises.

STATE TABLE 11.—DRAINAGE CONDITION, DEVELOPMENT, AND USE OF LAND IN ENTERPRISES, BY DATE OF ORGANIZATION, 1939

DATE OF ORGANIZATION	Land in all enterprises ¹	DRAINAGE CONDITION			DEVELOPMENT			USE OF LAND				
		Drained		Partly drained	Undrained	Improved land	Timber and cut-over land	Other unimproved land	In occupied farms	In planted crops	Idle	Land available for settlement
	Acres	Acres	Per-cent	Acres	Acres	Acres	Per-cent	Acres	Acres	Per-cent	Acres	Acres
All enterprises..	468,322	443,514	94.7	14,880	9,928	411,635	87.9	5,780	392,132	83.7	344,702	82,996
1900-1904.....	6,320	6,320	100.0	2,380	37.6	3,940	4,180	66.1	2,180
1905-1909.....	63,833	63,673	99.7	160	63,673	99.7	160	63,833	100.0	57,700	2,042
1910-1914.....	20,820	17,720	85.1	3,100	10,370	49.8	10,450	14,760	70.8	10,000	6,160
1915-1919.....	122,309	121,509	99.3	400	400	101,507	83.0	20,802	102,507	83.8	96,866	1,955
1920-1924.....	164,614	156,284	94.9	4,062	4,268	162,460	92.6	1,940	117,149	71.2	97,243	63,661
1925-1929.....	15,467	14,654	94.7	713	100	14,664	94.8	803	14,764	95.4	14,364	800
1930-1934.....	2,852	2,247	78.8	605	2,852	100.0	2,852	100.0	2,620
1935-1939.....	72,107	61,107	84.7	6,000	5,000	63,729	88.4	8,378	72,107	100.0	63,729	8,378

¹ Land included in more than 1 enterprise is tabulated only in the last organized.

STATE TABLE 12.—COST OF OPERATION AND MAINTENANCE, BY TYPE OF DRAINAGE, 1939

TYPE OF DRAINAGE	Land in all enterprises	LAND REPORTING ON COST OF MAINTENANCE AND OPERATION			COST REPORTED		
		Total	Some cost	No cost	Total amount	Per acre on—	
						Total reporting	Area incurring
All enterprises.....	Acres 468,322	Acres 468,322	Acres 430,212	Acres 38,110	Dollars 127,688	Dollars 0.27	Dollars 0.30
Gravity drainage only.....	458,295	458,295	420,185	38,110	126,165	0.28	0.30
Open ditches only.....	171,156	171,156	142,588	28,568	84,055	0.49	0.59
Tile drains only.....	9,945	9,945	9,285	560	2,423	0.25	0.26
Open ditches and tile drains.....	277,294	277,294	268,312	8,982	39,687	0.14	0.15
Pumping for all or part of drainage: Part pumping and part gravity.....	10,027	10,027	10,027	1,523	0.15	0.15

STATE TABLE 13.—LAND AND CAPITAL INVESTED, BY METHOD OF MAINTENANCE AND BY WHETHER MAINTENANCE IS SYSTEMATIC, JAN. 1, 1940

MAINTENANCE	Land		Capital invested	
	Acres	Percent	Dollars	Percent
All enterprises.....	468,322	100.0	4,890,317	100.0
Method:				
By district forces.....	290,270	62.0	2,796,122	57.2
By contract.....	29,167	6.2	424,200	8.7
Work apportioned to landowners.....	32,905	7.0	462,450	9.4
"None," or not reporting.....	115,980	24.8	1,207,545	24.7
Whether systematic:				
Reporting "yes".....	306,469	65.5	3,132,763	64.1
Reporting "no".....	161,281	34.4	1,746,654	35.7
Not reporting.....	572	0.1	10,900	0.2

CENSUS OF DRAINAGE — COLORADO

95

STATE TABLE 14.—LAND, CAPITAL INVESTED, AND DRAINAGE WORKS, BY OWNERSHIP OF POWER EQUIPMENT FOR MAINTENANCE, 1940

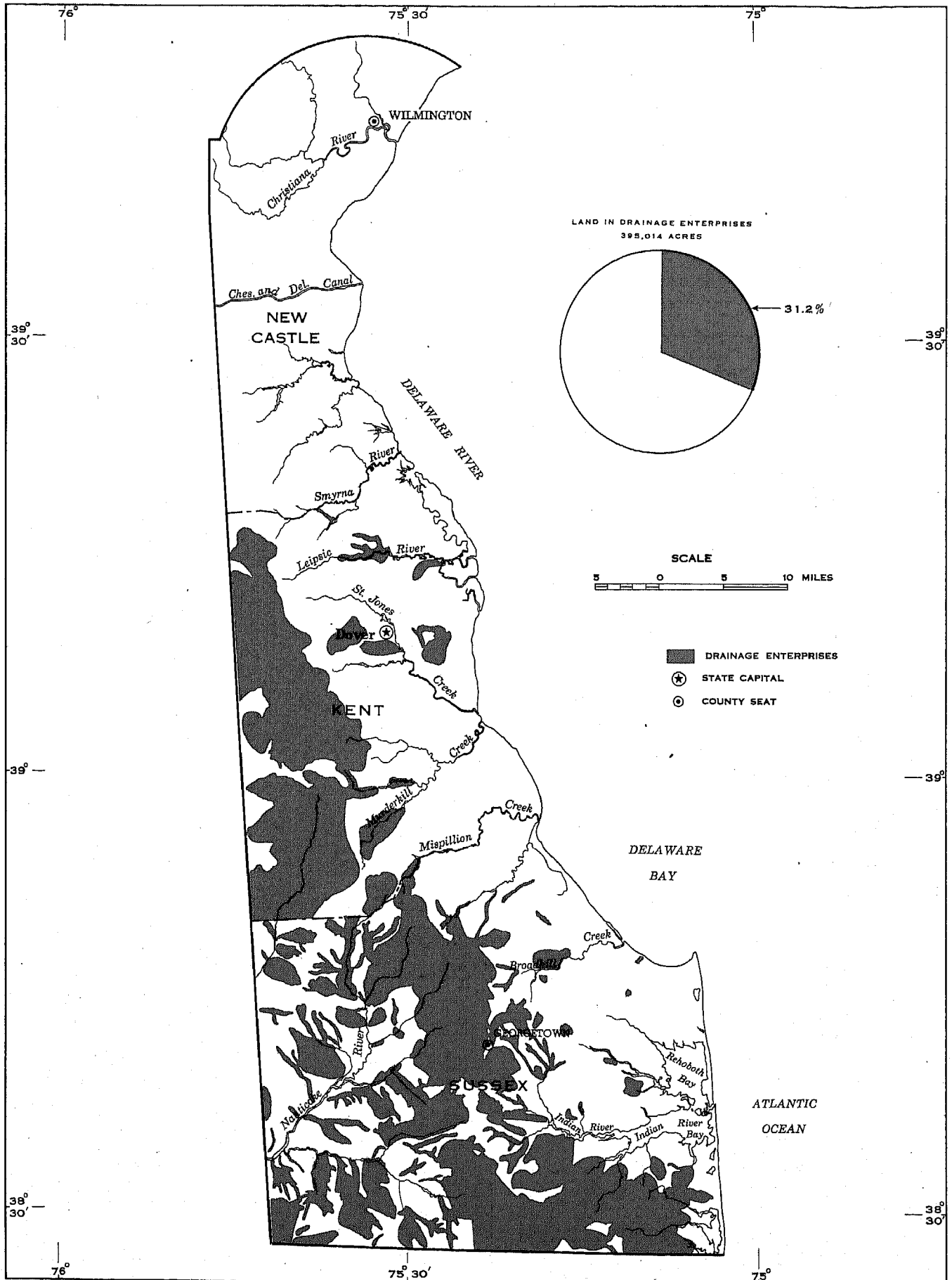
ITEM	All enterprises	ENTERPRISES OWNING POWER EQUIPMENT		ITEM	All enterprises	ENTERPRISES OWNING POWER EQUIPMENT	
		Amount	Percent			Amount	Percent
Land in enterprises.....acres....	468,322	42,176	9.0	Drainage works:			
Capital invested.....dollars..	4,890,317	702,724	14.4	Open ditches.....miles..	972.9	149.5	15.4
				Tile drains.....miles..	365.3	8.9	2.4

STATE TABLE 15.—LAND, CAPITAL INVESTED, AND DRAINAGE WORKS, BY FEDERAL AGENCY GIVING AID IN MAINTENANCE, 1940

AGENCY	Land in enterprises	Capital invested	DRAINAGE WORKS		
			Ditches	Tile	Levees
	Acres	Dollars	Miles	Miles	Miles
All enterprises reporting Federal aid received.....	33,442	615,000	90.8	17.5
Work Projects Administration.....	33,442	615,000	90.8	17.5

DELAWARE

Location of Land in Drainage Enterprises.



CENSUS OF DRAINAGE—FLORIDA

STATE TABLE 14.—LAND, CAPITAL INVESTED, AND DRAINAGE WORKS, BY OWNERSHIP OF POWER EQUIPMENT FOR MAINTENANCE, 1940

ITEM	All enterprises	ENTERPRISES OWNING POWER EQUIPMENT	
		Amount	Percent
Land in enterprises.....acres....	5,699,022	1,468,006	26.3
Capital invested.....dollars..	43,355,592	23,287,926	53.7
Drainage works:			
Open ditches.....miles...	5,022.1	1,039.5	39.2
Tile drains.....miles.....			
Levees.....miles.....	470.3	159.5	33.9

STATE TABLE 15.—LAND, CAPITAL INVESTED, AND DRAINAGE WORKS, BY FEDERAL AGENCY GIVING AID IN MAINTENANCE, 1940

AGENCY	Land in enterprises	Capital invested	DRAINAGE WORKS	
			Ditches	Levees
All enterprises reporting Federal aid received.....	Acres 1,183,256	Dollars 3,730,218	Miles 543.2	Miles 33.0
Work Projects Administration.....	89,585	825,084	330.2	5.0
Other kind or combination.....	894,373	2,424,877	188.0	28.0
No report.....	199,300	280,257	25.0

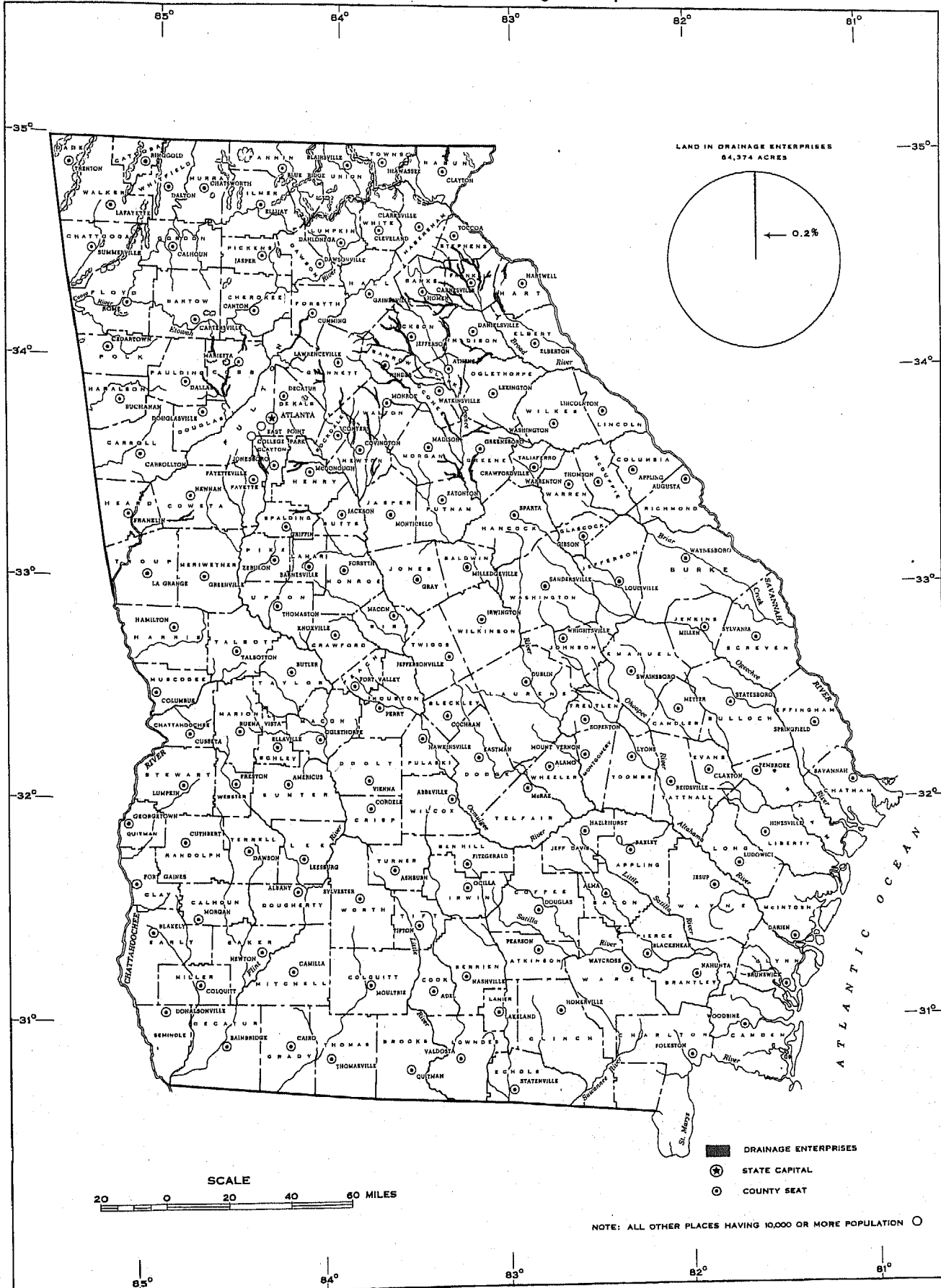
STATE TABLE 16.—LAND, CAPITAL INVESTED, AND DRAINAGE WORKS, BY FLOOD PROTECTION FROM LEVEES OF AN OUTSIDE AGENCY, 1940

ITEM	All enterprises	ENTERPRISES PROTECTED BY OUTSIDE AGENCY	
		Amount	Percent
Land in enterprises.....acres....	5,699,022	1,223,800	39.0
Capital invested.....dollars..	43,355,692	12,097,308	30.0
Drainage works:			
Open ditches.....miles....	5,022.1	1,408.6	29.2
Tile drains.....miles.....			
Levees.....miles.....	470.6	225.0	47.8

¹ The land actually dependent upon outside agencies for protection is 1,947,969 acres, which is 37.5 percent of all land in these protected enterprises.

GEORGIA

Location of Land in Drainage Enterprises



CENSUS OF DRAINAGE—GEORGIA

STATE TABLE 10.—COST OF OPERATION AND MAINTENANCE, BY TYPE OF DRAINAGE, 1939

TYPE OF DRAINAGE	Land in all enterprises	LAND REPORTING ON COST OF MAINTENANCE AND OPERATION			COST REPORTED		
		Total	Some cost	No cost	Total amount	Per acre on—	
						Total reporting	Area incurring
All enterprises.....	Acres 84,374	Acres 84,374	Acres 700	Acres 83,674	Dollars 600	Dollars 0.01	Dollars 0.86
Gravity drainage only ¹	84,374	84,374	700	83,674	600	0.86	0.86
Open ditches only.....	83,674	83,674	83,674
Open ditches, tile drains, and levees.....	700	700	700	600	0.86	0.86

¹ Includes 1 enterprise drained partly by pumping.

STATE TABLE 11.—LAND AND CAPITAL INVESTED, BY METHOD OF MAINTENANCE AND BY WHETHER MAINTENANCE IS SYSTEMATIC, JAN. 1, 1940

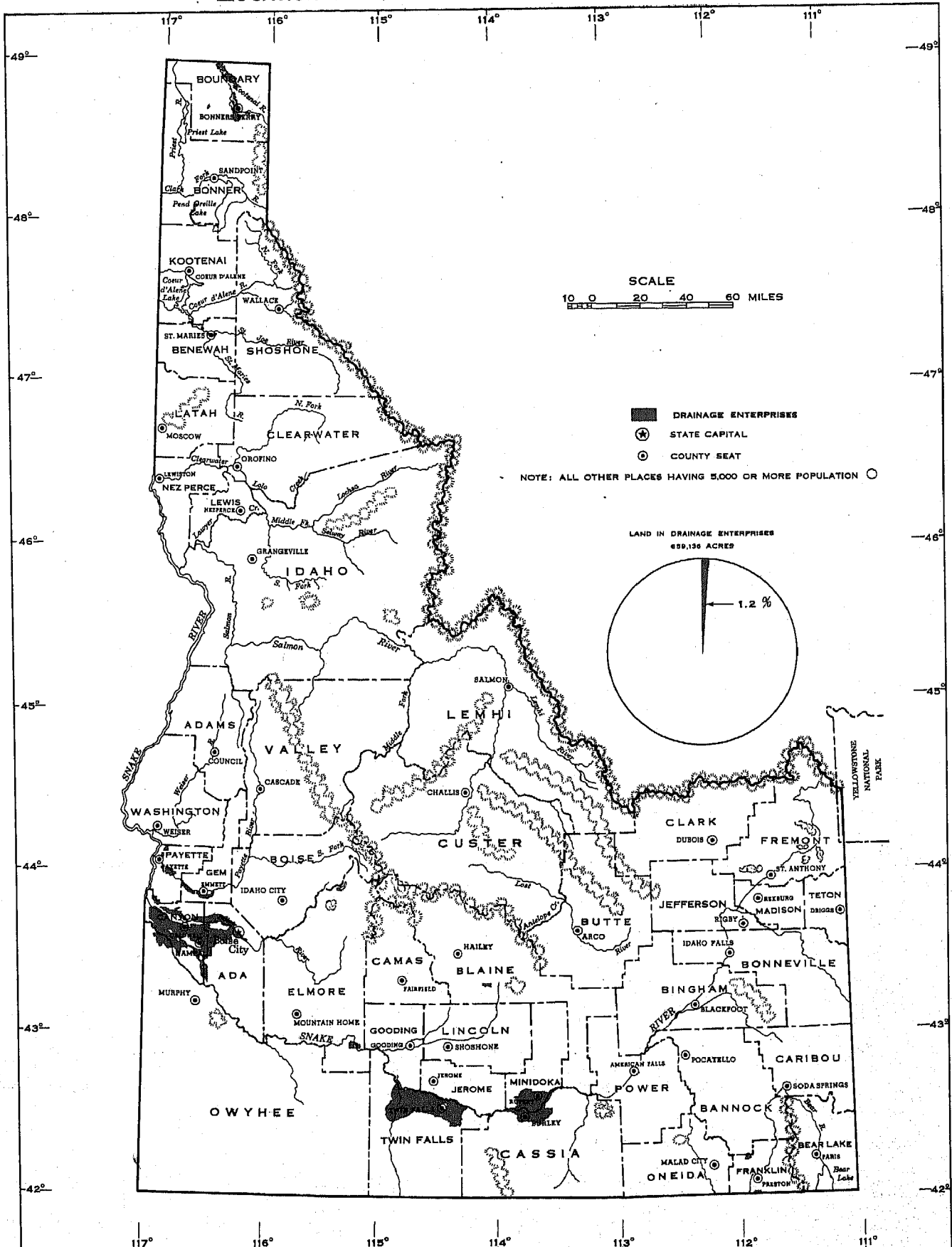
MAINTENANCE		Land		Capital invested	
		Acres	Percent	Dollars	Percent
All enterprises.....		84,374	100.0	2,081,840	100.0
Method:					
Work apportioned to landowners.....	700		0.8	100,000	4.8
"None," or not reporting.....	83,674		99.2	1,981,840	95.2
Whether systematic:					
Reporting "yes".....	700		0.8	100,000	4.8
Reporting "no".....	83,674		99.2	1,981,840	95.2

STATE TABLE 12.—LAND, CAPITAL INVESTED, AND DRAINAGE WORKS, BY FEDERAL AGENCY GIVING AID IN MAINTENANCE, 1940

AGENCY	Land in enterprises	Capital invested	DRAINAGE WORKS		
			Ditches	Tile	Levees
	Acres	Dollars	Miles	Miles	Miles
All enterprises reporting Federal aid received.....	12,106	244,174	50.0	2.0	5.0
Work Projects Administration.....	11,406	144,174	38.0
Civilian Conservation Corps.....	700	100,000	12.0	2.0	5.0

IDAHO

LOCATION OF LAND IN DRAINAGE ENTERPRISES



CENSUS OF DRAINAGE—IDAHO

127

STATE TABLE 13.—LAND AND CAPITAL INVESTED, BY METHOD OF MAINTENANCE AND BY WHETHER MAINTENANCE IS SYSTEMATIC, JAN. 1, 1940

MAINTENANCE	Land		Capital invested	
	Acres	Percent	Dollars	Percent
All enterprises.....	659,136	100.0	7,567,032	100.0
Method:				
By district forces.....	642,996	97.6	7,229,267	95.5
By contract.....	640	0.1	21,000	0.3
Work apportioned to landowners.....	2,035	0.3	102,232	1.4
"None," or not reporting.....	13,465	2.0	214,483	2.8
Whether systematic:				
Reporting "yes".....	623,188	94.6	7,116,465	94.5
Reporting "no".....	31,172	1.7	311,967	4.5
Not reporting.....	4,776	0.7	78,600	1.0

STATE TABLE 14.—LAND, CAPITAL INVESTED, AND DRAINAGE WORKS, BY OWNERSHIP OF POWER EQUIPMENT FOR MAINTENANCE, 1940

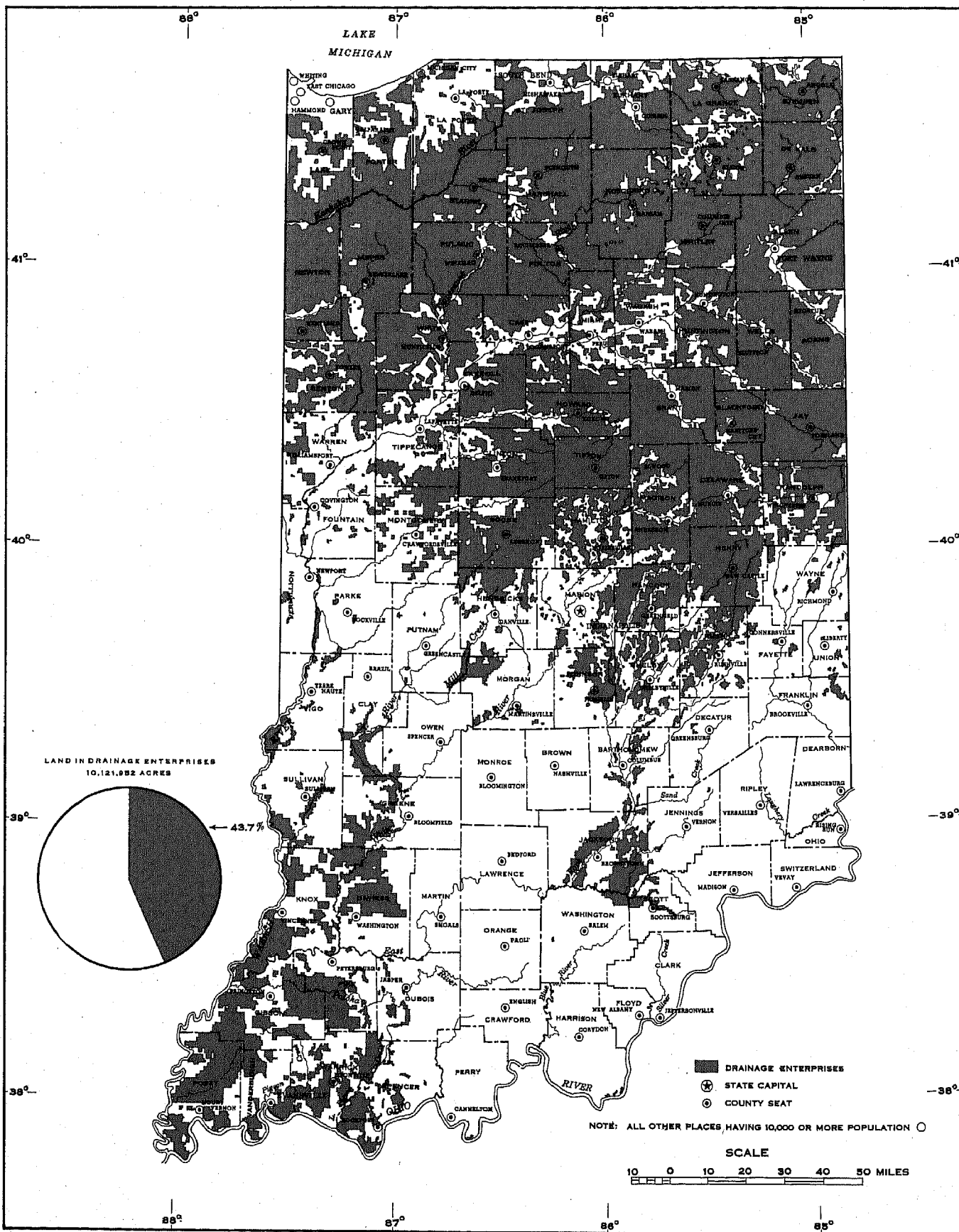
ITEM	All enterprises	ENTERPRISES OWNING POWER EQUIPMENT	
		Amount	Percent
Land in enterprises.....acres...	659,136	503,461	76.4
Capital invested.....dollars..	7,567,032	5,021,031	66.4
Drainage works:			
Open ditches.....miles...	969.1	605.5	62.5
Tile drains.....miles...	174.6	124.5	71.3
Levees.....miles...	95.4	45.0	47.2

STATE TABLE 15.—LAND, CAPITAL INVESTED, AND DRAINAGE WORKS, BY FEDERAL AGENCY GIVING AID IN MAINTENANCE, 1940

AGENCY	Land in enterprises	Capital invested	DRAINAGE WORKS		
			Ditches	Tile	Levees
All enterprises reporting Federal aid received.....	Acres 243,774	Dollars 1,305,439	Miles 529.5	Miles 6.2	Miles 57.4
Work Projects Administration.....	241,699	3,823,139	507.2	6.2	35.1
Other.....	7,075	482,300	22.3	22.3

INDIANA

LOCATION OF LAND IN DRAINAGE ENTERPRISES



CENSUS OF DRAINAGE—INDIANA

155

STATE TABLE 1.—SUMMARY OF DRAINAGE FOR THE STATE: JAN. 1, 1940, 1930, AND 1920

ITEM (See definitions in Introduction)	CENSUS OF—			INCREASE OR DECREASE (—)			
	1940	1930	1920	1930-1940		1920-1930	
				Amount	Percent	Amount	Percent
Approximate land area of State.....acres.....	23,153,920	23,068,800	23,068,800
Land in drainage enterprises.....acres.....	10,121,952	10,214,014	9,087,183	-82,062	-0.9	1,126,831	12.4
Improved.....acres.....	8,738,887	9,361,457	7,605,565	-622,570	-6.6	1,755,892	23.1
Unimproved:							
Timber and cut-over.....acres.....	1,000,328	681,869	942,378	319,059	46.8	-260,509	-27.6
Other.....acres.....	882,137	170,688	539,340	211,449	123.9	-368,552	-68.3
Drainage sufficient for normal crop.....acres.....	9,424,503	9,303,527	(¹)	120,976	1.3
Partly drained, for partial crop.....acres.....	534,496	668,218	(¹)	-133,722	-22.3
Unfit to raise any crop for lack of drainage.....acres.....	162,953	222,269	² 386,320	-59,316	-26.7	-161,051	-42.5
In occupied farms.....acres.....	³ 9,703,805	10,150,221	(¹)	-446,416	-4.4
In planted crops.....acres.....	7,512,766	8,454,408	(¹)	-941,732	-11.1
Idle.....acres.....	1,396,258	486,600	(¹)	909,598	186.9
Available for settlement.....acres.....	4,359	(¹)	-1,359	-100.0
Open ditches, completed.....miles.....	22,008.1	20,786.8	17,470.7	1,221.3	5.9	3,316.1	19.0
Tile drains, completed.....miles.....	10,754.7	10,438.7	8,227.6	316.0	3.0	2,211.1	26.9
Drainage pumping plants, capacity.....horsepower.....	515	166	625	349	210.2	-459	-73.4
.....gal. per min.....	47,333	48,000	55,348	-667	-1.4	-7,348	-13.3
Capital invested in enterprises.....dollars.....	47,540,385	54,110,854	31,117,682	-6,570,469	-12.1	22,963,172	73.7
Average per acre.....dollars.....	4.70	5.30	3.43	-0.60	-11.3	1.87	54.5

¹ Not available.

² Reported as "Swampy, subject to overflow, seeped, or alkali."

STATE TABLE 2.—AREA OF ENTERPRISES, BY SIZE: JAN. 1, 1940, 1930, AND 1920

[For intercounty enterprises the portion in each county is tabulated as a separate enterprise]

SIZE	AREA OF ENTERPRISES ¹			Land in enterprises ² 1940	SIZE	AREA OF ENTERPRISES ¹			Land in enterprises ² 1940
	1940	1930	1920			1940	1930	1920	
All enterprises.....	Acres 10,972,525	Acres 23,049,787	Acres 15,015,221	Acres 10,121,952	5,000 to 9,999 acres.....	Acres 2,362,676	Acres 2,727,803	Acres 1,718,075	Acres 1,356,726
Less than 100 acres.....	234,818	120,778	255,985	69,853	10,000 to 19,999 acres.....	2,070,077	5,086,605	2,017,817	1,271,114
100 to 199 acres.....	461,361	307,243	164,690	600,161	20,000 to 49,999 acres.....	1,966,222	1,878,090	1,032,904	1,018,017
200 to 499 acres.....	2,147,384	1,728,422	1,218,792	1,306,593	50,000 to 99,999 acres.....	1,022,024	631,619
500 to 999 acres.....	2,806,651	2,896,066	2,008,534	1,407,052	100,000 to 199,999 acres.....	711,417	755,799	196,349
1,000 to 1,999 acres.....	2,900,206	7,256,727	5,017,315	1,749,278	200,000 to 499,999 acres.....	1,044,155
2,000 to 4,999 acres.....	3,230,689	500,000 acres and over.....

¹ The sum of the areas in the individual enterprises, without deduction for overlapping.

² Overlapping eliminated by tabulating each enterprise according to its acreage not included in later enterprises.

STATE TABLE 3.—LAND AND CAPITAL INVESTED, BY CHARACTER OF ENTERPRISE, JAN. 1, 1940

CHARACTER OF ENTERPRISE	Land		Capital invested	
	Acres	Percent	Dollars	Percent
All enterprises.....	10,121,952	100.0	47,540,385	100.0
Drainage districts.....	17,644	0.2	322,274	0.7
County drains.....	10,103,308	99.8	47,119,446	99.1
Individually owned projects.....	1,000	(¹)	98,665	0.2

¹ Less than one-tenth of 1 percent.

STATE TABLE 4.—LAND AND CAPITAL INVESTED, BY TYPE OF DRAINAGE: JAN. 1, 1940, 1930, AND 1920

TYPE OF DRAINAGE ¹	LAND IN ENTERPRISES						CAPITAL INVESTED IN ENTERPRISES					
	1940		1930		1920		1940		1930		1920	
	Acres	Percent	Acres	Percent	Acres	Percent	Dollars	Percent	Dollars	Percent	Dollars	Percent
All enterprises.....	10,121,952	100.0	10,214,014	100.0	9,087,183	100.0	47,540,385	100.0	54,110,854	100.0	31,147,682	100.0
Gravity drainage only by—												
Open ditches.....	6,068,905	65.9	6,094,055	59.6	8,078,072	99.9	25,559,874	53.8	29,309,214	54.2	30,064,618	99.4
Tile drains.....	1,405,709	13.9	2,068,780	20.4	11,465,993	24.1	10,938,127	20.2
Open ditches and tile drains..	2,091,326	20.1	2,036,740	19.9	10,317,787	21.7	13,751,986	25.4
All drained by pumping by—												
Open ditches.....	3,706	(²)	1,133	(²)	311	(²)	110,515	0.2	20,000	(²)	6,289	(²)
Tile drains.....	206	(²)	5,618	(²)
Open ditches and tile drains..
Part only by pumping by—												
Open ditches.....	3,306	(²)	8,800	0.1	91,527	0.2	176,775	0.6
Tile drains.....	80,638	0.2
Open ditches and tile drains..	12,109	0.1
Total area served by pumps.....	5,412	(²)	2,763	(²)	5,611	0.1

¹ Each item includes those enterprises that have provided levees in addition to the kind of drains specified.

² Less than one-tenth of 1 percent.

CENSUS OF DRAINAGE—INDIANA

STATE TABLE 5.—PUMPING PLANTS AND LAND SERVED, BY KIND OF POWER: JAN. 1, 1940, 1930, AND 1920

KIND OF POWER	Enter- prises	CAPACITY			Land served	
		Engine or motor		Pump		
		Number	Hp.	Percent		G.p.m.
All pumping enterprises.....	1940..	4	515	100.0	47,333	5,412
	1930..	4	166	100.0	48,000	2,763
	1920..	4	625	100.0	55,348	5,611
Steam.....	1940..
	1930..	2	50	30.1	16,000	1,139
	1920..	4	625	100.0	55,348	5,611
Internal combustion.....	1940..	4	515	100.0	47,333	5,412
	1930..	1	100	60.3	30,000	1,500
	1920..
Electric and internal combustion.....	1940..
	1930..	1	16	9.6	2,000	130
	1920..

STATE TABLE 6.—PUMPING PLANTS AND LAND SERVED, BY KIND OF PUMP: JAN. 1, 1940 AND 1930

KIND OF PUMP	PUMPS			Engine or motor capac- ity	Land served	
	Number	Capacity				
All pumping enterprises.....	1940..	5	G. p. m. 47,333	Percent 100.0	Hp. 515	Acres 5,412
	1930..	7	48,000	100.0	166	2,763
Centrifugal.....	1940..	5	47,333	100.0	515	5,412
	1930..	6	42,000	87.5	141	2,163
Rotary.....	1940..	1	6,000	12.5	25	600
	1930..	1	6,000	12.5	25	600

STATE TABLE 7.—LAND, CAPITAL INVESTED, AND AREA DELINQUENT IN DRAINAGE TAXES, BY ARREARAGE IN PAYMENT OF OBLIGATIONS: JAN. 1, 1940 AND 1930

FINANCIAL STATUS	LAND IN ENTERPRISES				CAPITAL INVESTED				AREA DELINQUENT ¹	
	1940		1930		1940		1930		1940	1930
	Acres	Percent	Acres	Percent	Dollars	Percent	Dollars	Percent	Acres	Acres
All enterprises.....	10,121,952	100.0	10,214,014	100.0	47,540,385	100.0	54,110,854	100.0	62,207	90,608
Enterprises in arrears.....	451,083	4.4	287,986	2.8	1,673,680	3.5	1,160,540	2.1	55,125	79,180
With some delinquent land.....	252,815	2.5	215,935	2.1	897,769	1.9	876,860	1.6	55,125	79,180
With no delinquent land.....	188,177	1.8	9,041	0.1	731,607	1.5	35,054	0.1		
With no report on delinquency.....	10,091	0.1	62,080	0.6	44,413	0.1	248,626	0.4		
Enterprises not in arrears.....	9,613,219	95.0	9,926,028	97.2	45,866,705	95.7	52,950,314	97.0	7,082	20,518
With some delinquent land.....	49,717	0.5	62,877	0.6	306,366	0.6	744,461	1.4	7,082	20,518
With no delinquent land.....	9,541,569	94.3	9,721,890	95.2	45,014,913	94.8	51,228,460	94.7		
With no report on delinquency.....	21,933	0.2	111,291	1.1	151,978	0.3	977,393	1.8		
Enterprises not reporting on arrearage.....	57,650	0.6			360,439	0.8				
With some delinquent land.....										
With no delinquent land.....	10,170	0.1			75,781	0.2				
With no report on delinquency.....	17,480	0.5			284,658	0.6				

¹ If any land is delinquent in 2 or more overlapping enterprises, the acreage delinquent is too large by the amount of such duplication.

STATE TABLE 8.—LAND, CAPITAL INVESTED, INDEBTEDNESS, ARREARAGE IN PAYMENT OF BONDS, REDUCTION OF DEBT BY REFINANCING, AND ACREAGE DELINQUENT, 1940; DRAINAGE TAXES COLLECTED IN 1939; BY INDEBTEDNESS AND ARREARAGE, JAN. 1, 1940

FINANCIAL STATUS	Land in enterprises	Capital invested	Indebtedness	Arrearage in payment of bonds	Reduction of debt by refinancing	Delinquent in drainage taxes ¹	Drainage taxes collected in 1939
	Acres	Dollars	Dollars	Dollars	Dollars	Acres	Dollars
All enterprises.....	10,121,952	47,540,385	429,245	131,634	9,752	62,207	133,868
Enterprises in debt.....	689,172	2,869,894	429,245	131,634	1,252	58,271	93,769
In arrears, amount of arrearage stated.....	451,083	1,673,680	139,496	131,634		55,125	15,643
Collecting drainage taxes in 1939.....	160,603	418,702	49,008	41,337		36,006	15,643
No collections reported.....	290,480	1,256,987	91,487	90,297		18,219	
Not in arrears.....	238,089	1,105,145	289,749		1,252	3,146	78,126
Collecting drainage taxes in 1939.....	111,850	807,030	148,761			644	78,126
No collections reported.....	126,239	388,115	140,988		1,252	2,502	
Enterprises not in debt.....	9,292,361	44,123,211					
Collecting drainage taxes in 1939.....	90,623	320,786				3,936	36,385
No collections reported.....	9,201,738	43,802,425				1,082	36,385
Enterprises not reporting as to debt.....	110,369	548,340					
Collecting drainage taxes in 1939.....	3,146	78,000			8,500		3,714
No collections reported.....	137,253	470,340			8,500		3,714

¹ If any land is delinquent in 2 or more overlapping enterprises, the acreage delinquent is too large by the amount of such duplication.

CENSUS OF DRAINAGE—INDIANA

STATE TABLE 13.—LAND AND CAPITAL INVESTED, BY METHOD OF MAINTENANCE AND BY WHETHER MAINTENANCE IS SYSTEMATIC, JAN. 1, 1940

MAINTENANCE	Land		Capital invested	
	Acres	Percent	Dollars	Percent
All enterprises.....	10,131,952	100.0	47,540,385	100.0
Method:				
By district forces.....	225,154	2.2	871,631	1.8
By contract.....	5,872,966	58.0	27,632,436	58.1
Work apportioned to landowners.....	3,184,591	31.5	14,527,347	30.6
"None," or not reporting.....	839,241	8.3	4,508,972	9.5
Whether systematic:				
Reporting "yes".....	4,458,162	44.0	21,553,127	45.3
Reporting "no".....	5,633,502	55.7	25,831,766	54.3
Not reporting.....	30,198	0.3	165,492	0.4

STATE TABLE 14.—LAND, CAPITAL INVESTED, AND DRAINAGE WORKS, BY OWNERSHIP OF POWER EQUIPMENT FOR MAINTENANCE, 1940

ITEM	All enterprises	ENTERPRISES OWNING POWER EQUIPMENT	
		Amount	Percent
Land in enterprises.....acres....	10,131,952	28,195	0.3
Capital invested.....dollars..	47,540,385	193,044	0.4
Drainage works:			
Open ditches.....miles....	23,008.1	52.4	0.2
Tile drains.....miles....	10,754.7	70.4	0.6
Levees.....miles....	139.0	6.9	5.0

STATE TABLE 15.—LAND, CAPITAL INVESTED, AND DRAINAGE WORKS, BY FEDERAL AGENCY GIVING AID IN MAINTENANCE, 1940

AGENCY	Land in enterprises	Capital invested	DRAINAGE WORKS		
			Ditches	Tile	Levees
All enterprises reporting Federal aid received.....	Acres 469,580	Dollars 2,157,780	Miles 648.6	Miles 144.7	Miles 33.2
Work Projects Administration.....	182,981	903,686	148.1	13.1	9.5
Civilian Conservation Corps.....	269,517	1,101,656	450.4	130.6
Corps of Engineers, U.S.A.....	15,408	72,713	14.9	18.6
W.P.A. and C.C.C.....	1,480	14,612	3.7
Other kind or combination.....	20,203	65,213	22.5	1.0	5.1

CENSUS OF DRAINAGE—INDIANA

COUNTY TABLE I.—LAND IN DRAINAGE ENTERPRISES CLASSIFIED BY CONDITION AND BY USE, 1940, 1930, AND 1920; AND BY KIND OF WORKS, 1940—Continued

ITEM (See definitions in Introduction)		Cass	Clay	Clinton	Daviess	Decatur	De Kalb	Delaware	Dubois	Elkhart
LAND AREA										
1	Approximate land area.....acres....1940..	235,600	232,960	260,480	277,120	236,800	233,300	256,000	277,120	299,520
2	Drainage enterprises.....number....1940..	388	14	123	29	5	216	111	17	361
3	Land in enterprises.....acres....1940..	173,983	39,266	213,302	97,774	3,891	211,550	210,725	14,330	207,801
41930..	192,316	47,892	210,915	115,140	(1)	220,132	200,272	17,800	230,305
51920..	218,421	59,050	87,339	40,276	(1)	215,850	218,896	8,989	280,817
6	Area of all enterprises; overlapping included.....acres....1940..	273,875	68,930	533,294	135,596	2,891	625,165	537,461	11,790	242,039
7	Amount of overlapping.....acres....1940..	99,892	29,664	319,992	37,822	413,615	346,736	160	31,225
CONDITION AND USE OF LAND										
8	Land with drainage sufficient for normal crop.....acres....1940..	140,514	38,168	208,907	97,774	2,571	189,185	204,699	14,514	159,817
91930..	188,133	46,188	190,510	110,430	(1)	210,837	199,309	14,503	198,583
10	Increase or decrease (-), 1930-1940.....acres.....	-47,619	-8,018	18,397	-12,656	-21,652	5,400	11	-8,766
11percent.....	-25.3	-17.4	9.6	-11.5	-10.3	2.8	0.1	-5.2
12	Land undrained, unfit for any crop.....acres....1940..	43	1,098	100	6,677	2,003	23,768
131930..	67	1,411	4,710	(1)	3,550	774	861	9,274
14	Increase or decrease (-), 1930-1940.....acres.....	-24	1,098	-1,411	-4,710	3,127	1,229	-861	11,494
15percent.....	-35.8	-100.0	-100.0	88.1	158.8	-100.0	153.3
16	Land partly drained, for partial crop.....acres....1940..	33,426	4,395	220	15,688	4,023	116	21,189
171930..	4,146	1,706	18,994	(1)	5,745	280	2,436	22,508
18	Increase or decrease (-), 1930-1940.....acres.....	29,280	-1,706	-14,599	9,943	3,743	-2,020	1,681
19percent.....	706.2	-100.0	-76.9	173.1	(2)	-95.2	7.5
20	Improved land.....acres....1940..	139,642	32,531	188,280	92,123	2,891	189,605	189,503	14,460	159,809
211930..	182,399	47,247	202,619	106,780	(1)	198,305	182,450	13,619	183,612
221920..	196,581	49,497	77,982	40,142	(1)	141,782	106,985	7,823	217,623
Unimproved land:										
23	Woodland and cut-over land.....acres....1940..	32,743	5,823	14,743	5,651	17,592	21,222	170	21,217
241930..	9,578	455	7,988	7,160	(1)	19,000	17,151	3,270	8,662
251920..	21,840	8,623	4,963	134	(1)	18,525	61,615	566	11,676
26	Other unimproved land.....acres....1940..	1,598	912	10,279	10,353	23,778
271930..	368	180	308	1,200	(1)	1,927	662	911	8,191
281920..	830	4,394	(1)	55,452	296	21,518
29	Land in occupied farms.....acres....1940..	172,601	39,266	183,602	97,774	2,891	211,510	210,725	14,330	207,801
301930..	192,248	47,047	210,721	115,140	(1)	220,132	200,258	17,800	199,745
31	Increase or decrease (-), 1930-1940.....acres.....	-19,645	-7,781	-27,119	-17,366	-8,622	10,467	-3,170	8,046
32percent.....	-10.2	-16.5	-12.9	-15.1	-3.9	5.2	-17.8	4.0
33	Land in planted crops ⁴acres....1940..	124,740	25,592	159,629	89,922	2,599	162,118	167,768	13,111	159,755
341930..	175,818	37,595	191,780	98,440	(1)	187,490	167,185	12,653	167,182
35	Increase or decrease (-), 1930-1940.....acres.....	-51,078	-12,003	-32,151	-8,518	-25,372	563	458	-7,727
36percent.....	-29.0	-31.9	-16.8	-8.6	-13.5	0.3	3.6	-4.6
37	Land idle.....acres....1940..	22,548	13,637	12,134	7,852	292	46,561	32,038	1,388	48,048
381930..	101	5,169	451	8,275	(1)	7,805	1,903	3,520	12,051
39	Increase or decrease (-), 1930-1940.....acres.....	22,447	8,478	11,683	-423	40,756	30,076	-2,192	35,997
40percent.....	(8)	164.3	(5)	-5.1	522.2	(9)	-60.6	294.7
41	Land available for settlement.....acres....1940..
421930..	1,170	(1)	945
43	Increase or decrease (-), 1930-1940.....acres.....	-1,170	-945
44percent.....	-100.0	-100.0
LAND CLASSIFIED BY WORKS, 1940										
45	Land drained by open ditches only.....acres.....	78,421	33,665	117,504	82,594	2,292	144,585	109,561	9,839	164,488
46	Length of these ditches.....miles.....	279.5	41.6	325.6	119.2	5.3	499.8	330.1	23.9	292.1
47	Part protected by levees of an outside agency.....acres.....
48	Land drained by open ditches and own levees.....acres.....	560
49	Length of these ditches.....miles.....	18.7
50	Length of these levees.....miles.....	5.1
51	Part protected by levees of an outside agency.....acres.....
52	Land drained by tile only.....acres.....	43,547	42,010	680	22,179	28,670	31,816
53	Length of these tile.....miles.....	197.5	369.4	2.8	305.1	170.5	80.8
54	Part protected by levees of an outside agency.....acres.....
55	Land drained by tile and own levees.....acres.....
56	Length of these tile.....miles.....
57	Length of these levees.....miles.....
58	Part protected by levees of an outside agency.....acres.....
59	Land drained by open ditches and tile.....acres.....	32,015	1,952	53,788	14,500	599	44,786	72,491	11,500
60	Length of these open ditches.....miles.....	113.1	23.7	114.9	12.6	0.7	110.1	145.9	18.6
61	Length of these tile.....miles.....	84.1	5.7	102.3	13.9	0.3	95.3	80.5	10.0
62	Part protected by levees of an outside agency.....acres.....
63	Land drained by open ditches, tile, and levees.....acres.....	4,791
64	Length of these open ditches.....miles.....	16.0
65	Length of these tile.....miles.....	0.5
66	Length of these levees.....miles.....	0.1
67	Part protected by levees of an outside agency.....acres.....
68	Land in enterprises operating pumping plants ⁵acres.....	(6)
69	Length of open ditches owned by these enterprises.....miles.....	(6)
70	Length of tile owned by these enterprises.....miles.....
71	Length of levees owned by these enterprises.....miles.....	(6)
72	Part protected by levees of an outside agency.....acres.....

¹Included in "Other counties."²Percent not shown when more than 1,000.³Office estimate; the reported figures exceed the acreage in all farms as reported by the Census of Agriculture.⁴It seems evident that in some counties the reported acreage planted corresponds to land available for crops rather than to land used for crops as reported by the Census of Agriculture.⁵Data in lines 68 to 72 are not included in lines 45 to 67.⁶Included only in State totals.

CENSUS OF DRAINAGE — INDIANA

161

COUNTY TABLE I.—LAND IN DRAINAGE ENTERPRISES CLASSIFIED BY CONDITION AND BY USE, 1940, 1930, AND 1920; AND BY KIND OF WORKS, 1940—Continued

ITEM (See definitions in Introduction)		Fayette	Fountain	Franklin	Fulton	Gibson	Grant	Greene	Hamilton
LAND AREA									
1	Approximate land area.....acres....1940..	137,600	254,080	252,160	234,880	319,360	269,440	351,360	257,920
2	Drainage enterprises.....number....1940..	9	24	11	94	64	158	28	232
3	Land in enterprises.....acres....1940..	9,248	22,670	7,538	206,428	168,619	235,970	63,569	168,026
41930..	7,376	15,860	7,259	136,902	226,315	208,210	61,708	142,439
51920..	6,185	11,213	7,180	221,911	160,403	221,636	51,077	128,591
6	Area of all enterprises, overlapping included.....acres....1940..	10,394	23,987	7,538	400,360	201,045	541,191	154,968	258,099
7	Amount of overlapping.....acres....1940..	1,146	1,317	193,932	92,396	305,221	91,398	80,073
CONDITION AND USE OF LAND									
8	Land with drainage sufficient for normal crop.....acres....1940..	8,729	22,010	7,538	205,074	166,404	226,582	54,231	187,575
91930..	7,336	15,407	7,259	120,304	193,139	203,929	52,638	139,219
10	Increase or decrease (-), 1930-1940.....acres.....	1,393	6,603	279	84,770	-26,735	22,653	1,593	26,357
11percent.....	19.0	42.8	3.8	70.5	-13.8	11.1	3.0	20.4
12	Land undrained, unfit for any crop.....acres....1940..	1,283	665	8	9,398	450
131930..	10	3,374	8,753	2,058	2,238	1,376
14	Increase or decrease (-), 1930-1940.....acres.....	-10	-2,091	-8,088	-2,050	7,100	-926
15percent.....	-100.0	-62.0	-92.4	-99.8	317.2	-67.3
16	Land partly drained, for partial crop.....acres....1940..	519	660	71	1,580	9,380
171930..	30	453	13,224	24,423	2,223	6,830	1,844
18	Increase or decrease (-), 1930-1940.....acres.....	489	207	-13,153	-22,843	7,157	-6,830	-1,844
19percent.....	(¹)	45.7	-99.5	-93.5	322.0	-100.0
20	Improved land.....acres....1940..	9,248	22,429	7,418	191,560	165,283	200,625	53,725	167,566
211930..	7,257	15,710	7,169	123,578	197,709	194,730	58,445	135,885
221920..	4,785	8,659	6,466	186,287	182,915	193,747	44,960	124,560
Unimproved land:									
23	Woodland and cut-over land.....acres....1940..	241	60	14,765	2,511	35,294	9,844	138
241930..	119	150	90	6,877	18,859	10,881	1,785	4,047
251920..	990	1,371	569	15,462	3,979	21,643	5,380	4,031
26	Other unimproved land.....acres....1940..	60	103	855	51	322
271930..	6,447	9,747	2,599	1,470	1,907
281920..	410	1,183	145	20,142	3,509	6,246	737
29	Land in occupied farms.....acres....1940..	9,248	22,524	7,538	201,700	168,649	213,400	63,599	168,026
301930..	7,376	15,760	7,259	131,333	226,315	206,667	61,706	142,191
31	Increase or decrease (-), 1930-1940.....acres.....	1,872	6,764	279	70,367	-57,666	6,733	1,663	25,842
32percent.....	25.4	42.9	3.8	53.6	-25.5	3.2	3.0	18.2
33	Land in planted crops ²acres....1940..	8,569	20,265	6,632	161,800	154,397	120,691	43,242	167,566
341930..	6,565	14,185	6,476	96,153	158,223	189,910	53,152	122,411
35	Increase or decrease (-), 1930-1940.....acres.....	2,004	6,080	156	65,647	-3,826	-69,219	-9,910	45,155
36percent.....	30.5	42.9	2.4	68.3	-2.4	-36.4	-18.6	36.9
37	Land idle.....acres....1940..	679	896	3,495	15,252	80,075	20,297	460
381930..	13,632	14,834	2,037	2,053	1,070
39	Increase or decrease (-), 1930-1940.....acres.....	679	896	-10,137	418	78,038	18,244	-610
40percent.....	-74.4	2.8	(¹)	888.6	-57.0
41	Land available for settlement.....acres....1940..
421930..	100	68
43	Increase or decrease (-), 1930-1940.....acres.....	-100	-68
44percent.....	-100.0	-100.0
LAND CLASSIFIED BY WORKS, 1940									
45	Land drained by open ditches only.....acres.....	4,588	3,509	198,678	165,897	106,222	56,220	78,871
46	Length of these ditches.....miles.....	5.6	9.1	178.1	268.4	402.1	211.0	133.4
47	Part protected by levees of an outside agency.....acres.....
48	Land drained by open ditches and own levees.....acres.....	6,871
49	Length of these ditches.....miles.....	8.5
50	Length of these levees.....miles.....	13.5
51	Part protected by levees of an outside agency.....acres.....
52	Land drained by tile only.....acres.....	3,610	7,704	3,029	12,291	830	52,773	200	22,068
53	Length of these tile.....miles.....	8.9	20.3	5.8	184.6	0.8	146.3	0.6	80.0
54	Part protected by levees of an outside agency.....acres.....
55	Land drained by tile and own levees.....acres.....
56	Length of these tile.....miles.....
57	Length of these levees.....miles.....
58	Part protected by levees of an outside agency.....acres.....
59	Land drained by open ditches and tile.....acres.....	1,050	10,538	4,509	55,459	1,922	76,975	278	68,487
60	Length of these open ditches.....miles.....	0.2	4.6	1.2	198.9	7.5	174.0	2.4	108.8
61	Length of these tile.....miles.....	1.7	15.0	15.2	152.5	2.0	115.7	0.2	119.7
62	Part protected by levees of an outside agency.....acres.....
63	Land drained by open ditches, tile, and levees.....acres.....	922
64	Length of these open ditches.....miles.....	0.1
65	Length of these tile.....miles.....	4.0
66	Length of these levees.....miles.....	0.2
67	Part protected by levees of an outside agency.....acres.....
68	Land in enterprises operating pumping plants.....acres.....
69	Length of open ditches owned by these enterprises.....miles.....
70	Length of tile owned by these enterprises.....miles.....
71	Length of levees owned by these enterprises.....miles.....
72	Part protected by levees of an outside agency.....acres.....

¹Percent not shown when more than 1,000.²It seems evident that in some counties the reported acreage planted corresponds to land available for crops rather than to land used for crops as reported by the Census of Agriculture.

CENSUS OF DRAINAGE—INDIANA

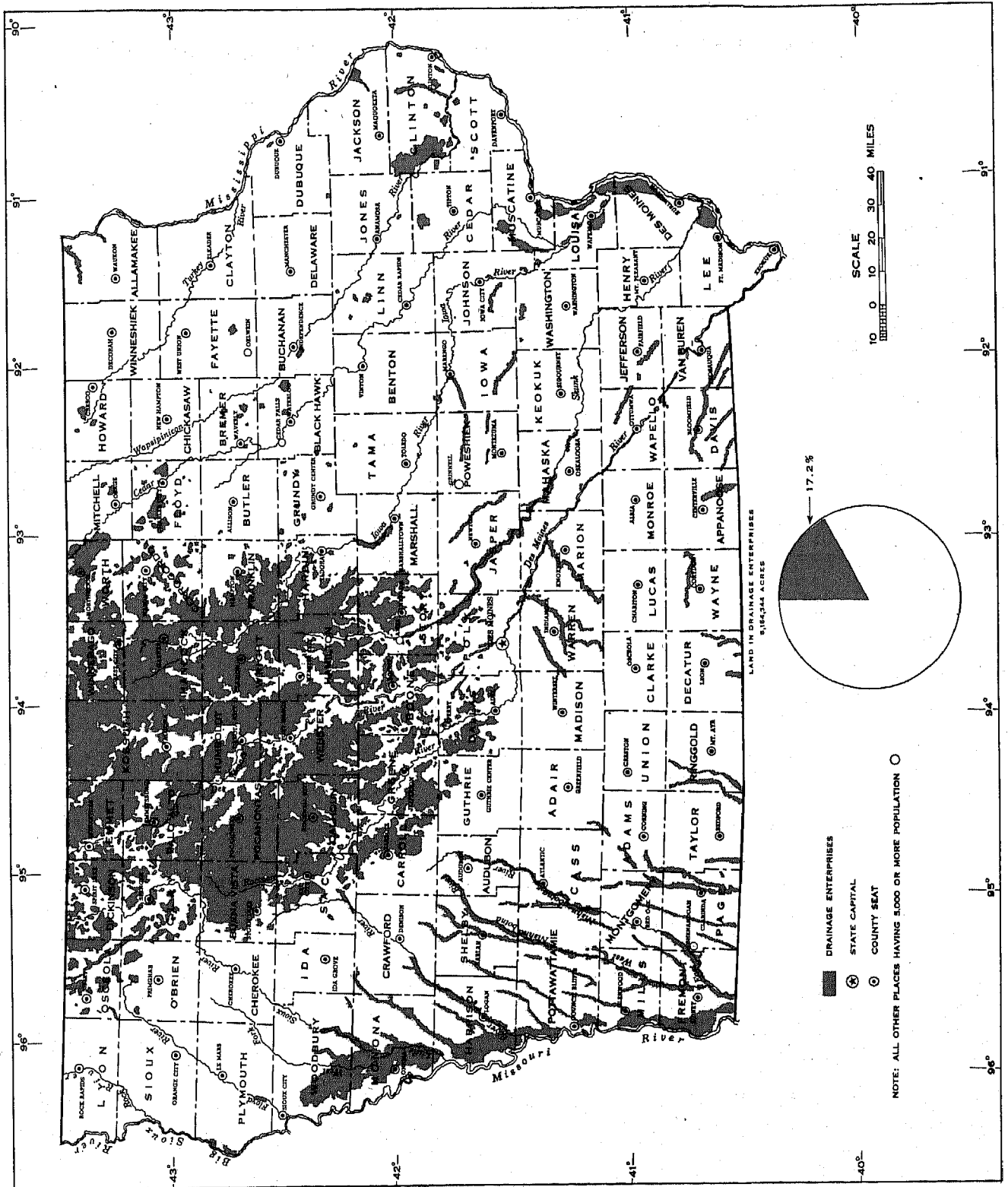
COUNTY TABLE I.—LAND IN DRAINAGE ENTERPRISES CLASSIFIED BY CONDITION AND BY USE, 1940, 1930, AND 1920; AND BY KIND OF WORKS, 1940—Continued

ITEM (See definitions in Introduction)		Marshall	Miami	Montgomery	Morgan	Newton	Noble	Owen	Parke	Pike
LAND AREA										
1	Approximate land area.....acres....1940..	281,101	213,300	324,489	250,349	261,329	262,400	250,210	288,040	214,400
2	Drainage enterprises.....number....1940..	382	192	146	18	114	135	5	9	10
3	Land in enterprises.....acres....1940..	237,335	144,298	98,387	33,762	229,682	186,219	4,374	12,022	80,394
41930..	264,204	140,043	117,553	48,002	233,210	158,091	5,193	8,280	138,403
51920..	266,037	201,728	77,573	29,147	172,687	198,866	6,540	12,399	32,152
6	Area of all enterprises, overlapping included.....acres....1940..	305,077	306,168	155,071	48,967	469,737	498,048	6,649	19,003	110,805
7	Amount of overlapping.....acres....1940..	67,742	161,870	55,687	15,205	240,055	281,799	2,275	6,981	21,411
CONDITION AND USE OF LAND										
8	Land with drainage sufficient for normal crop.....acres....1940..	229,531	110,979	90,307	20,563	143,551	170,483	4,374	11,035	87,551
91930..	248,312	137,623	116,014	45,729	138,715	149,173	5,043	8,080	138,469
10	Increase or decrease (-), 1930-1940.....acres.....	-18,781	-26,644	-16,707	-25,166	4,839	21,310	-669	2,955	-50,918
11percent.....	-7.6	-19.4	-14.4	-55.0	3.5	14.3	-13.3	36.6	-36.8
12	Land undrained, unfit for any crop.....acres....1940..	2,116	4,961	80	50	5,270	10,622	500	1,803
131930..	2,162	123	161	1,390	13,057	4,776	85	50
14	Increase or decrease (-), 1930-1940.....acres.....	-46	4,838	-81	-1,340	-7,787	5,846	-95	450	1,803
15percent.....	-2.1	(1)	-50.3	-96.4	-59.6	122.4	-100.0	900.0
16	Land partly drained, for partial crop.....acres....1940..	5,688	28,358	13,149	80,858	5,144	487	40
171930..	13,730	2,297	1,391	883	81,438	4,142	45	150
18	Increase or decrease (-), 1930-1940.....acres.....	-8,042	26,061	-1,391	12,266	-580	1,002	-45	337	40
19percent.....	-58.6	(1)	-100.0	(1)	-0.7	24.2	-100.0	224.7
20	Improved land.....acres....1940..	210,071	104,152	90,387	23,470	186,769	144,726	4,374	10,408	75,889
211930..	249,331	119,390	116,307	44,834	211,363	134,695	3,810	8,230	124,539
221920..	230,796	182,084	59,491	24,773	146,033	151,554	5,532	10,539	31,268
Unimproved land:										
23	Woodland and cut-over land.....acres....1940..	24,898	30,090	8,785	10,222	10,632	18,100	1,109	3,393
241930..	12,338	30,683	719	1,412	14,828	14,057	1,116	5,392
251920..	36,770	19,532	8,230	2,921	13,118	23,759	882	1,800	854
26	Other unimproved land.....acres....1940..	2,366	30,056	215	70	23,281	23,423	447	10,112
271930..	2,535	540	1,706	7,019	9,339	267	50	8,738
281920..	18,471	107	9,852	1,453	13,536	23,553	126
29	Land in occupied farms.....acres....1940..	234,808	144,298	99,387	33,762	203,700	181,691	4,374	12,022	85,500
301930..	261,201	140,043	117,553	47,905	217,831	158,051	5,193	8,280	138,469
31	Increase or decrease (-), 1930-1940.....acres.....	-26,393	4,255	-17,966	-14,143	-14,131	23,640	-809	3,742	-52,969
32percent.....	-11.1	3.0	-15.2	-29.5	-6.5	15.0	-15.6	45.2	-38.2
33	Land in planted crops ¹acres....1940..	166,700	69,117	90,236	23,130	125,900	122,713	3,850	10,227	65,800
341930..	215,759	97,229	105,202	33,967	202,225	128,614	2,910	7,120	117,545
35	Increase or decrease (-), 1930-1940.....acres.....	-49,059	-28,112	-14,966	-10,847	-76,325	-5,901	940	3,107	-51,745
36percent.....	-22.7	-28.9	-14.2	-31.9	-37.7	-4.6	32.3	43.6	-44.0
37	Land idle.....acres....1940..	10,872	2,841	9,054	10,072	87,331	27,430	524	1,795	10,442
381930..	5,595	22,476	426	6,627	16,453	2,047	1,068	748	11,839
39	Increase or decrease (-), 1930-1940.....acres.....	5,277	-19,635	8,628	3,445	70,878	25,382	-544	1,047	7,603
40percent.....	97.5	-87.4	(1)	52.0	430.8	(1)	-50.9	140.0	64.2
41	Land available for settlement.....acres....1940..
421930..
43	Increase or decrease (-), 1930-1940.....acres.....
44percent.....
LAND CLASSIFIED BY WORKS, 1940										
45	Land drained by open ditches only.....acres.....	151,640	96,552	28,914	31,052	212,617	104,033	4,374	3,962	88,213
46	Length of these ditches.....miles.....	359.8	405.3	83.7	71.9	365.9	289.9	12.3	10.6	57.5
47	Part protected by levees of an outside agency.....acres.....
48	Land drained by open ditches and own levees.....acres.....
49	Length of these ditches.....miles.....	7,100	496
50	Length of these levees.....miles.....	19.9	0.3
51	Part protected by levees of an outside agency.....acres.....	20.3	0.3
52	Land drained by tile only.....acres.....	49,463	46,779	38,633	240	14,905	12,062
53	Length of these tile.....miles.....	185.8	182.6	126.6	1.0	113.5	329.9
54	Part protected by levees of an outside agency.....acres.....
55	Land drained by tile and own levees.....acres.....
56	Length of these tile.....miles.....
57	Length of these levees.....miles.....
58	Part protected by levees of an outside agency.....acres.....
59	Land drained by open ditches and tile.....acres.....	36,232	987	31,940	2,470	2,160	70,124
60	Length of these open ditches.....miles.....	53.2	7.1	65.0	5.4	12.4	139.8	685
61	Length of these tile.....miles.....	34.9	4.5	51.4	1.4	11.8	90.4	3.2
62	Part protected by levees of an outside agency.....acres.....	0.2
63	Land drained by open ditches, tile, and levees.....acres.....
64	Length of these open ditches.....miles.....	960
65	Length of these tile.....miles.....	1.2
66	Length of these levees.....miles.....	0.3
67	Part protected by levees of an outside agency.....acres.....	1.5
68	Land in enterprises operating pumping plants.....acres.....
69	Length of open ditches owned by these enterprises.....miles.....
70	Length of tile owned by these enterprises.....miles.....
71	Length of levees owned by these enterprises.....miles.....
72	Part protected by levees of an outside agency.....acres.....

¹Percent not shown when more than 1,000.²Office estimate; the reported figures exceed the acreage in all farms as reported by the Census of Agriculture.³It seems evident that in some counties the reported acreage planted corresponds to land available for crops rather than to land used for crops as reported by the Census of Agriculture.

IOWA

LOCATION OF LAND IN DRAINAGE ENTERPRISES



CENSUS OF DRAINAGE — IOWA

181

STATE TABLE 13.—LAND AND CAPITAL INVESTED, BY METHOD OF MAINTENANCE AND BY WHETHER MAINTENANCE IS SYSTEMATIC, JAN. 1, 1940

MAINTENANCE	Land		Capital invested	
	Acres	Percent	Dollars	Percent
All enterprises.....	5,164,344	100.0	75,374,497	100.0
Method:				
By district forces.....	3,108,570	50.4	39,700,283	52.7
By contract.....	2,284,871	37.1	24,694,708	32.7
Work apportioned to landowners.....	78,915	1.3	1,258,853	1.7
"None," or not reporting.....	691,982	11.2	9,720,653	12.9
Whether systematic:				
Reporting "yes".....	2,639,591	42.8	31,679,318	42.0
Reporting "no".....	3,515,019	57.0	43,695,497	57.8
Not reporting.....	9,734	0.2	159,382	0.2

STATE TABLE 14.—LAND, CAPITAL INVESTED, AND DRAINAGE WORKS, BY OWNERSHIP OF POWER EQUIPMENT FOR MAINTENANCE, 1940

ITEM	All enterprises	ENTERPRISES OWNING POWER EQUIPMENT	
		Amount	Percent
Land in enterprises.....acres....	5,164,344	71,019	1.2
Capital invested.....dollars..	75,374,497	1,099,049	1.5
Drainage works:			
Open ditches.....miles....	5,189.7	51.9	1.0
Tile drains.....miles....	12,873.2	285.4	2.2
Levees.....miles....	453.6		

STATE TABLE 15.—LAND, CAPITAL INVESTED, AND DRAINAGE WORKS, BY FEDERAL AGENCY GIVING AID IN MAINTENANCE, 1940

AGENCY	Land in enterprises	Capital invested	DRAINAGE WORKS		
			Ditches	Tile	Levees
All enterprises reporting Federal aid received.....	Acres 853,956	Dollars 10,122,592	Miles 885.7	Miles 1,407.9	Miles 71.4
Work Projects Administration.....	271,783	3,157,455	229.3	573.6	
Civilian Conservation Corps.....	525,871	6,161,585	609.0	632.7	71.4
W.P.A. and C.C.C.....	55,068	792,377	47.4	198.1	
Other kind or combination.....	634	11,175		0.5	

STATE TABLE 16.—LAND, CAPITAL INVESTED, AND DRAINAGE WORKS, BY FLOOD PROTECTION FROM LEVEES OF AN OUTSIDE AGENCY, 1940

ITEM	All enterprises	ENTERPRISES PROTECTED BY OUTSIDE AGENCY	
		Amount	Percent
Land in enterprises.....acres....	6,164,344	155,178	0.9
Capital invested.....dollars..	75,374,497	791,008	1.0
Drainage works:			
Open ditches.....miles....	5,189.7	78.5	1.5
Tile drains.....miles....	12,873.2	25.8	0.2
Levees.....miles....	453.6	65.8	14.4

¹The land actually dependent upon works of outside agencies for protection is 21,063 acres; which is 38.2 percent of all land in these protected enterprises.

