

## Number of Inhabitants

\_\_\_\_\_  
\_\_\_\_\_

# NUMBER OF INHABITANTS

## Virginia

### LIST OF TABLES

[Page numbers listed here omit the State prefix number which appears as part of the page number for each page. The prefix for this State is 48]

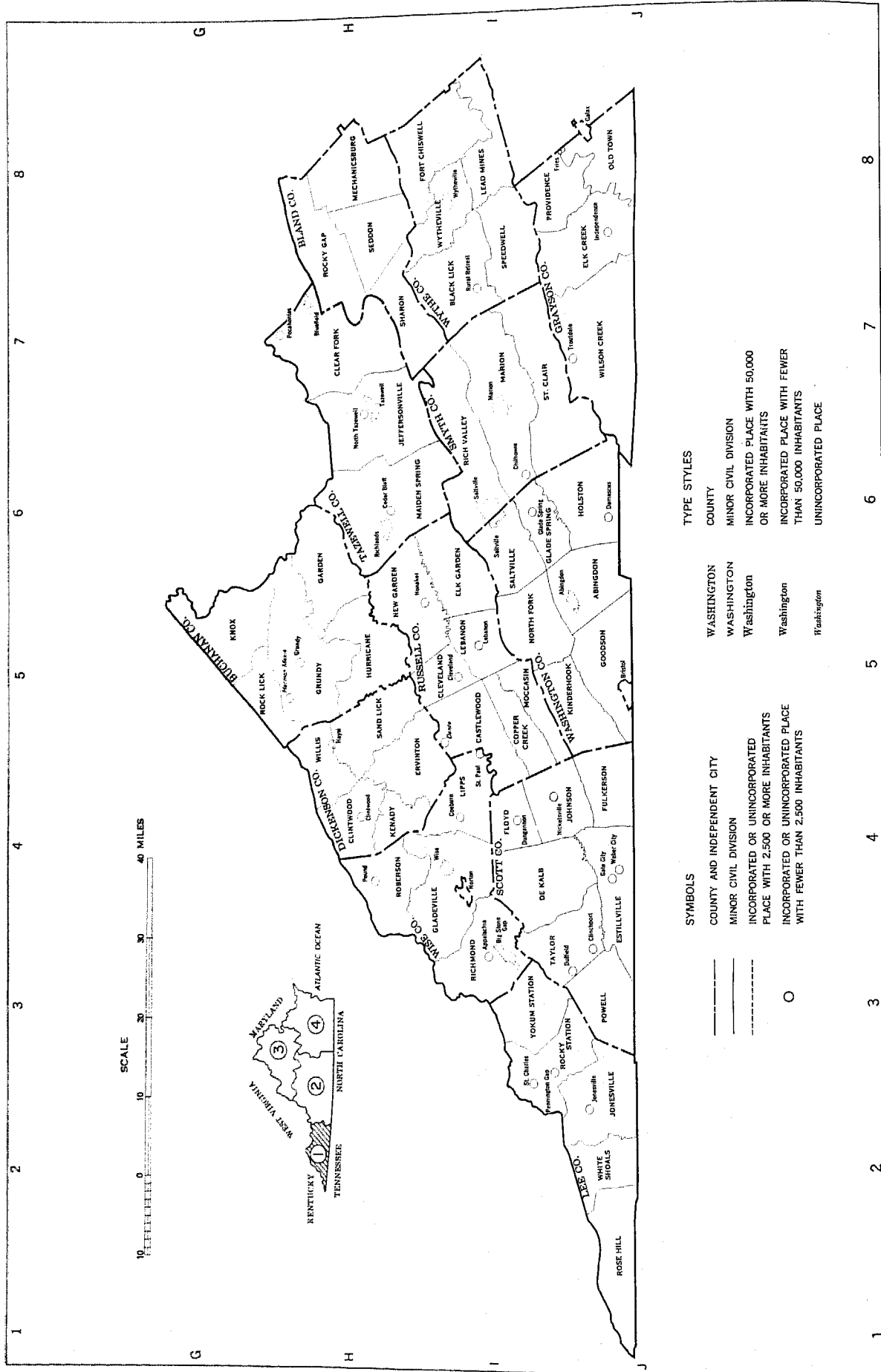
Table	Page
1.—Population of the State, urban and rural: 1790 to 1960.....	8
2.—Population in groups of places according to size: 1960 and 1950.....	8
3.—Population in groups of places according to size: 1900 to 1960.....	9
4.—Population in incorporated and unincorporated places according to size: 1960.....	10
5.—Population of incorporated places of 10,000 or more from earliest census to 1960.....	10
6.—Area and population of counties and independent cities, urban and rural: 1960 and 1950.....	12
7.—Population of counties, by minor civil divisions: 1940 to 1960.....	14
8.—Population of all incorporated places and of unincorporated places of 1,000 or more: 1940 to 1960.....	18
9.—1960 population of areas annexed between 1950 and 1960 by incorporated places having 2,500 inhabitants or more in 1950.....	19
10.—Population of urbanized areas: 1960 and 1950.....	20
11.—Population of standard metropolitan statistical areas: 1960 and 1950.....	21
12.—Population of the State and of standard metropolitan statistical areas, by type of residence: 1960.....	21

### LIST OF MAPS

The State, showing counties and independent cities, places of 25,000 or more, and standard metropolitan statistical areas.....	3
The State, showing minor civil divisions.....	4
Urbanized areas (separate map for each area).....	22



VIRGINIA - SECTION 1  
 MINOR CIVIL DIVISIONS--MAGISTERIAL DISTRICTS



TYPE STYLES

COUNTY	TYPE STYLE
WASHINGTON	COUNTY
WASHINGTON	MINOR CIVIL DIVISION
Washington	INCORPORATED PLACE WITH 50,000 OR MORE INHABITANTS
Washington	INCORPORATED PLACE WITH FEWER THAN 50,000 INHABITANTS
Washington	UNINCORPORATED PLACE

SYMBOLS

SYMBOL	DESCRIPTION
—	COUNTY AND INDEPENDENT CITY
- - -	MINOR CIVIL DIVISION
○	INCORPORATED OR UNINCORPORATED PLACE WITH 2,500 OR MORE INHABITANTS
○	INCORPORATED OR UNINCORPORATED PLACE WITH FEWER THAN 2,500 INHABITANTS

Large-scale copies of this map may be purchased from Superintendent of Documents, U. S. Government Printing Office, Washington 25, D. C., after April 1, 1961.

VIRGINIA—SECTION 2  
MINOR CIVIL DIVISIONS—MAGISTERIAL DISTRICTS

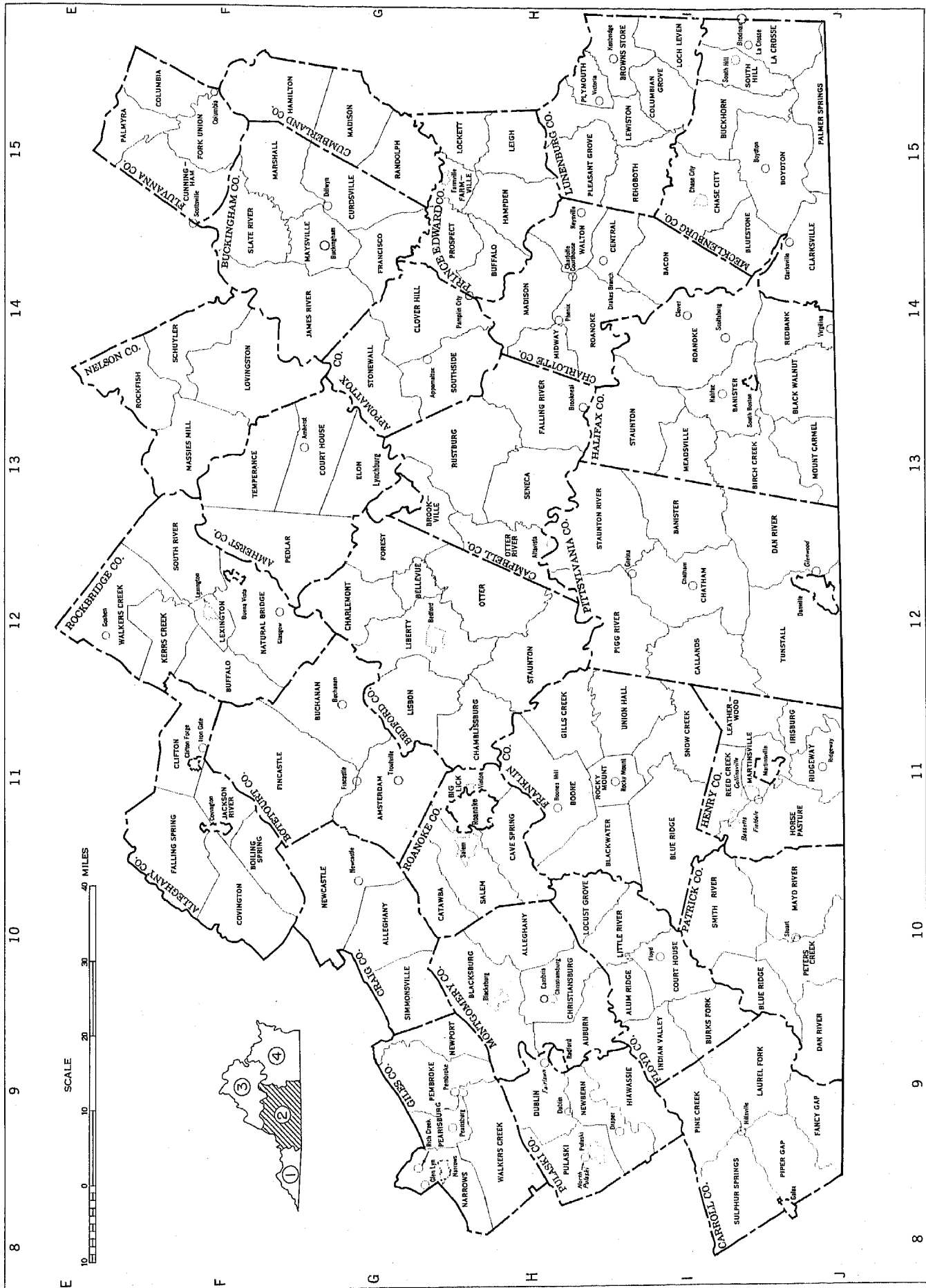






Table 1.—POPULATION OF THE STATE, URBAN AND RURAL: 1790 TO 1960

[For description of current and previous urban definitions, see text. Minus sign (-) denotes decrease]

Census date	The State			Urban territory				Rural territory			Percent of total	
	Population	Increase over preceding census		Number of urban places	Population	Increase over preceding census		Population	Increase over preceding census		Urban	Rural
		Number	Percent			Number	Percent		Number	Percent		
<b>Current urban definition:</b>												
1960 (Apr. 1)	3,966,949	648,269	19.5	76	2,204,913	644,798	41.3	1,762,036	3,471	0.2	55.6	44.4
1950 (Apr. 1)	3,318,680	640,907	23.9	78	2,156,015	...	...	1,758,565	...	...	47.0	53.0
<b>Previous urban definition:</b>												
1960 (Apr. 1)	3,966,949	648,269	19.5	71	1,932,468	557,432	40.5	2,034,481	90,837	4.7	48.7	51.3
1950 (Apr. 1)	3,318,680	640,907	23.9	64	2,137,506	430,361	45.6	2,194,344	210,546	12.1	341.4	358.6
1940 (Apr. 1)	2,677,773	255,922	10.6	53	944,675	159,138	20.3	1,733,098	96,784	5.9	35.3	64.7
1930 (Apr. 1)	2,421,851	112,664	4.9	45	785,537	111,553	16.6	1,636,314	1,111	0.1	32.4	67.6
1920 (Jan. 1)	2,309,187	247,575	12.0	39	673,984	197,455	41.4	1,635,203	50,120	3.2	29.2	70.8
1910 (Apr. 15)	2,061,612	207,428	11.2	32	476,529	136,462	40.1	1,585,083	70,966	4.7	23.1	76.9
1900 (June 1)	1,854,184	198,204	12.0	27	340,067	57,346	20.3	1,514,117	140,858	10.3	18.3	81.7
1890 (June 1)	1,655,980	143,415	9.5	25	282,721	93,642	49.5	1,373,259	49,773	3.8	17.1	82.9
1880 (June 1)	1,512,565	287,402	23.5	15	189,079	43,461	29.8	1,323,486	243,941	22.6	12.5	87.5
1870 (June 1)	1,225,163	5,533	0.5	13	145,618	29,739	25.7	1,079,545	-24,206	-2.2	11.9	88.1
1860 (June 1)	1,219,630	100,282	9.0	10	115,879	26,624	29.8	1,103,751	73,658	7.2	9.5	90.5
1850 (June 1)	1,119,348	94,121	9.2	8	89,255	18,287	25.8	1,030,093	75,834	7.9	8.0	92.0
1840 (June 1)	1,025,227	-18,827	-1.8	8	70,968	20,593	40.9	954,259	-39,420	-4.0	6.9	93.1
1830 (June 1)	1,044,054	105,793	11.3	6	50,375	14,922	42.1	993,679	90,871	10.1	4.8	95.2
1820 (Aug. 7)	938,261	60,578	6.9	4	35,453	3,630	11.4	902,808	56,948	6.7	3.8	96.2
1810 (Aug. 6)	877,683	70,126	8.7	4	31,823	10,688	50.4	845,860	59,458	7.6	3.6	96.4
1800 (Aug. 4)	807,557	115,820	16.7	4	21,155	8,859	72.0	786,402	106,961	15.7	2.6	97.4
1790 (Aug. 2)	691,737	...	...	4	12,296	...	...	679,441	...	...	1.8	98.2

<sup>1</sup> Includes 371,630 persons in urban territory outside urban places.<sup>2</sup> Includes 271,720 persons in urban territory outside urban places.<sup>3</sup> Revised since publication of 1950 reports.<sup>4</sup> Population of present area of Virginia; population of Virginia as then constituted: 1870, 1,225,163; 1860, 1,596,318; 1850, 1,421,661; 1840, 1,239,797; 1830, 1,211,405; 1820, 1,065,366; 1810, 974,600; 1800, 880,200; 1790, 821,287.

Table 2.—POPULATION IN GROUPS OF PLACES ACCORDING TO SIZE: 1960 AND 1950

[Percent not shown where less than 0.1]

Type of area and size of place	1960				1950			
	Number of places	Population	Percent of total population	Percent of total	Number of places	Population	Percent of total population	Percent of total
The State	...	3,966,949	100.0	...	...	3,318,680	100.0	...
<b>URBAN</b>								
Total	( <sup>1</sup> )	2,204,913	55.6	100.0	( <sup>2</sup> )	1,560,115	47.0	100.0
Within urbanized areas	...	1,699,695	42.8	77.1	...	981,520	29.6	62.9
Central cities, total	7	995,423	25.1	45.1	4	615,783	18.6	39.5
Cities of 1,000,000 or more	...	...	...	...	...	...	...	...
Cities of 500,000 to 1,000,000	...	...	...	...	...	...	...	...
Cities of 250,000 to 500,000	1	305,872	7.7	13.9	...	...	...	...
Cities of 100,000 to 250,000	3	448,393	11.3	20.3	2	443,823	13.4	28.4
Cities of 50,000 to 100,000	3	241,158	6.1	10.9	2	171,960	5.2	11.0
Cities under 50,000	...	...	...	...	...	...	...	...
Urban fringes, total	...	704,272	17.8	31.9	...	365,737	11.0	23.4
Places of 2,500 or more	9	332,642	8.4	15.1	6	94,017	2.8	6.0
Places of 100,000 or more	1	163,401	4.1	7.4	...	...	...	...
Places of 50,000 to 100,000	1	91,023	2.3	4.1	1	61,787	1.9	4.0
Places of 25,000 to 50,000	...	...	...	...	...	...	...	...
Places of 10,000 to 25,000	5	70,508	1.8	3.2	...	...	...	...
Places of 5,000 to 10,000	...	...	...	...	...	...	...	...
Places of 2,500 to 5,000	2	7,710	0.2	0.3	2	7,438	0.2	0.5
Places under 2,500	...	...	...	...	...	...	...	...
Places of 2,000 to 2,500	...	...	...	...	...	...	...	...
Places of 1,500 to 2,000	...	...	...	...	...	...	...	...
Places of 1,000 to 1,500	...	...	...	...	...	...	...	...
Places under 1,000	...	...	...	...	...	...	...	...
Other urban territory	...	371,630	9.4	16.9	...	271,720	8.2	17.4
Outside urbanized areas	60	505,218	12.7	22.9	68	578,595	17.4	37.1
Places of 25,000 or more	3	112,754	2.8	5.1	5	186,174	5.6	11.9
Places of 10,000 to 25,000	12	180,153	4.5	8.2	11	154,031	4.6	9.9
Places of 5,000 to 10,000	17	117,314	3.0	5.3	20	126,235	3.8	8.1
Places of 2,500 to 5,000	28	94,997	2.4	4.3	32	112,155	3.4	7.2
<b>RURAL</b>								
Total	...	1,762,036	44.4	100.0	...	1,758,565	53.0	100.0
Places of 1,000 to 2,500	69	108,925	2.7	6.2	79	123,034	3.8	7.1
Places of 2,000 to 2,500	15	33,846	0.9	1.9	15	32,740	1.0	1.9
Places of 1,500 to 2,000	17	29,344	0.7	1.7	22	38,281	1.2	2.2
Places of 1,000 to 1,500	37	45,735	1.2	2.6	42	52,013	1.6	3.0
Other rural territory	...	1,633,111	41.7	93.8	...	1,635,531	49.3	93.0
<b>URBANIZED AREAS</b>								
Total	6	1,699,695	42.8	100.0	4	981,520	29.6	100.0
Areas of 1,000,000 or more	1	465,487	11.7	27.4	1	231,732	7.0	23.6
Areas of 500,000 to 1,000,000	1	507,825	12.8	29.9	...	...	...	...
Areas of 250,000 to 500,000	1	333,438	8.4	19.6	2	643,106	19.4	65.5
Areas of 100,000 to 250,000	2	333,626	8.4	19.6	1	106,682	3.2	10.9
Areas under 100,000	1	59,319	1.5	3.5	...	...	...	...

<sup>1</sup> There were 76 places of 2,500 or more.<sup>2</sup> There were 78 places of 2,500 or more.



Table 3.—POPULATION IN GROUPS OF PLACES ACCORDING TO SIZE: 1900 TO 1960

Subject and size of place	1960		1950		1940	1930	1920	1910	1900
	Current urban definition	Previous urban definition	Current urban definition	Previous urban definition <sup>1</sup>					
<b>NUMBER OF PLACES</b>									
Urban territory	76	71	78	64	53	45	39	32	27
Places of 2,500 or more	76	71	78	64	53	45	39	32	27
Places of 1,000,000 or more	...	...	...	...	...	...	...	...	...
Places of 500,000 to 1,000,000	...	...	...	...	...	...	...	...	...
Places of 250,000 to 500,000	1	1	2	2	2	2	2	1	1
Places of 100,000 to 250,000	4	4	3	3	3	1	2	1	1
Places of 50,000 to 100,000	4	5	5	6	5	4	3	3	1
Places of 25,000 to 50,000	3	5	5	6	6	9	5	6	7
Places of 10,000 to 25,000	17	16	12	10	13	10	9	6	6
Places of 5,000 to 10,000	17	17	22	19	24	19	18	15	12
Places of 2,500 to 5,000	30	23	34	23	...	...	...	...	...
Places under 2,500	...	...	...	...	...	...	...	...	...
Rural territory	187	169	191	161	165	170	164	159	128
Places of 1,000 to 2,500	69	51	79	49	42	42	47	40	30
Places under 1,000	118	118	112	112	123	128	117	119	98
<b>Cumulative summary:</b>									
Places of 1,000,000 or more	...	...	...	...	...	...	...	...	...
Places of 500,000 or more	...	...	...	...	...	...	...	...	...
Places of 250,000 or more	1	1	...	...	...	...	...	...	...
Places of 100,000 or more	5	5	2	3	2	2	2	1	1
Places of 50,000 or more	9	10	5	6	5	7	4	5	2
Places of 25,000 or more	12	15	10	12	10	16	12	11	9
Places of 10,000 or more	29	31	22	22	16	16	12	17	15
Places of 5,000 or more	46	48	44	41	29	26	21	17	15
Places of 2,500 or more	76	71	78	64	53	45	39	32	27
<b>POPULATION</b>									
Urban territory	2,204,913	1,932,468	1,560,115	1,375,036	944,675	785,537	673,984	476,529	340,067
Places of 2,500 or more	1,833,283	1,932,468	1,288,395	1,375,036	944,675	785,537	673,984	476,529	340,067
Places of 1,000,000 or more	...	...	...	...	...	...	...	...	...
Places of 500,000 to 1,000,000	...	...	...	...	...	...	...	...	...
Places of 250,000 to 500,000	305,872	305,872	...	...	...	...	...	...	...
Places of 100,000 to 250,000	611,794	611,794	443,823	579,272	337,374	312,639	287,444	127,628	...
Places of 50,000 to 100,000	332,181	394,707	233,747	233,747	177,072	69,206	105,229	67,452	85,050
Places of 25,000 to 50,000	112,734	161,219	186,174	225,266	178,511	148,346	96,678	97,558	46,624
Places of 10,000 to 25,000	250,661	239,878	164,465	135,290	76,321	118,830	67,639	95,532	130,306
Places of 5,000 to 10,000	117,314	117,314	140,593	122,351	93,233	68,993	58,694	36,764	38,261
Places of 2,500 to 5,000	102,707	81,684	119,593	79,110	82,164	66,523	58,300	51,595	39,826
Places under 2,500	...	...	...	...	...	...	...	...	...
Other urban territory	371,630	...	271,720	...	...	...	...	...	...
Rural territory	1,762,036	2,034,481	1,758,565	1,943,644	1,733,098	1,636,314	1,635,203	1,585,083	1,514,117
Places of 1,000 to 2,500	108,925	81,803	123,034	76,584	67,031	69,099	70,438	62,559	45,449
Places under 1,000	56,697	56,697	52,926	52,926	57,976	57,653	50,345	50,457	39,254
Other rural territory	1,996,414	1,895,981	1,582,605	1,814,134	1,608,091	1,509,562	1,514,420	1,472,067	1,429,414
<b>Cumulative summary:</b>									
Places of 1,000,000 or more	...	...	...	...	...	...	...	...	...
Places of 500,000 or more	...	...	...	...	...	...	...	...	...
Places of 250,000 or more	305,872	305,872	...	...	...	...	...	...	...
Places of 100,000 or more	917,666	917,666	443,823	579,272	337,374	312,639	287,444	127,628	...
Places of 50,000 or more	1,249,847	1,312,373	677,570	813,019	514,446	381,845	392,673	195,080	85,050
Places of 25,000 or more	1,362,601	1,493,592	863,744	1,038,285	692,957	531,191	489,351	292,638	131,674
Places of 10,000 or more	1,613,262	1,733,470	1,028,209	1,173,575	769,278	650,021	556,990	388,170	261,980
Places of 5,000 or more	1,730,576	1,850,784	1,168,802	1,295,926	862,511	719,014	615,684	424,934	300,241
Places of 2,500 or more	1,833,283	1,932,468	1,288,395	1,375,036	944,675	785,537	673,984	476,529	340,067
<b>PERCENT OF TOTAL POPULATION</b>									
Urban territory	55.6	48.7	47.0	41.4	35.3	32.4	29.2	23.1	18.3
Places of 2,500 or more	46.2	48.7	38.8	41.4	35.3	32.4	29.2	23.1	18.3
Places of 1,000,000 or more	...	...	...	...	...	...	...	...	...
Places of 500,000 to 1,000,000	...	...	...	...	...	...	...	...	...
Places of 250,000 to 500,000	7.7	7.7	...	...	...	...	...	...	...
Places of 100,000 to 250,000	15.4	15.4	13.4	17.5	12.6	12.9	12.4	6.2	...
Places of 50,000 to 100,000	8.4	9.9	7.0	7.0	6.6	2.9	4.6	3.3	4.6
Places of 25,000 to 50,000	2.8	4.6	5.6	6.8	6.7	6.2	4.2	4.7	2.5
Places of 10,000 to 25,000	6.3	6.0	5.0	4.1	2.9	4.9	2.9	4.6	7.0
Places of 5,000 to 10,000	3.0	3.0	4.2	3.7	3.5	2.8	2.5	1.8	2.1
Places of 2,500 to 5,000	2.6	2.1	3.6	2.4	3.1	2.7	2.5	2.5	2.1
Places under 2,500	...	...	...	...	...	...	...	...	...
Other urban territory	9.4	...	8.2	...	...	...	...	...	...
Rural territory	44.4	51.3	53.0	58.6	64.7	67.6	70.8	76.9	81.7
Places of 1,000 to 2,500	2.7	2.1	3.7	2.3	2.5	2.9	3.1	3.0	2.5
Places under 1,000	1.4	1.4	1.6	1.6	2.2	2.4	2.2	2.4	2.1
Other rural territory	40.2	47.8	47.7	54.7	60.1	62.3	65.6	71.4	77.1
<b>Cumulative summary:</b>									
Places of 1,000,000 or more	...	...	...	...	...	...	...	...	...
Places of 500,000 or more	...	...	...	...	...	...	...	...	...
Places of 250,000 or more	7.7	7.7	...	...	...	...	...	...	...
Places of 100,000 or more	23.1	23.1	13.4	17.5	12.6	12.9	12.4	6.2	...
Places of 50,000 or more	31.5	33.1	20.4	24.5	19.2	15.8	17.0	9.5	4.6
Places of 25,000 or more	34.3	37.7	26.0	31.3	25.9	21.9	21.2	14.2	7.1
Places of 10,000 or more	40.7	43.7	31.0	35.4	28.7	26.8	24.1	18.8	14.1
Places of 5,000 or more	43.6	46.7	35.2	39.0	32.2	29.8	26.7	20.6	16.2
Places of 2,500 or more	46.2	48.7	38.8	41.4	35.3	32.4	29.2	23.1	18.3

<sup>1</sup> Revised since publication of 1950 reports.

Table 4.—POPULATION IN INCORPORATED AND UNINCORPORATED PLACES ACCORDING TO SIZE: 1960

Size of place and urban-rural classification	All places		Incorporated places		Unincorporated places		Size of place and urban-rural classification	All places		Incorporated places		Unincorporated places	
	Number	Population	Number	Population	Number	Population		Number	Population	Number	Population	Number	Population
Total	263	1,998,905	236	1,776,576	27	1,222,329							
500,000 or more	...	...	...	...	...	...	In urbanized areas—Con.						
250,000 to 500,000	1	305,872	1	305,872	...	...	5,000 to 10,000	2	7,710	2	7,710	...	...
100,000 to 250,000	4	611,794	3	448,393	1	163,401	2,500 to 5,000	...	...	...	...	...	...
50,000 to 100,000	4	332,181	4	332,181	...	...	2,000 to 2,500	...	...	...	...	...	...
25,000 to 50,000	3	112,754	3	112,754	...	...	1,500 to 2,000	...	...	...	...	...	...
20,000 to 25,000	2	44,267	2	44,267	...	...	1,000 to 1,500	...	...	...	...	...	...
10,000 to 20,000	15	206,394	14	195,611	1	10,783	500 to 1,000	...	...	...	...	...	...
5,000 to 10,000	17	117,314	17	117,314	...	...	200 to 500	...	...	...	...	...	...
2,500 to 5,000	30	102,707	23	81,684	7	21,023	Under 200	...	...	...	...	...	...
2,000 to 2,500	15	33,846	12	26,816	3	7,030	Other urban territory	60	505,218	53	484,195	7	21,023
1,500 to 2,000	17	29,344	15	25,967	2	3,377	25,000 to 50,000	3	112,754	3	112,754	...	...
1,000 to 1,500	37	45,735	24	29,020	13	16,715	20,000 to 25,000	1	22,232	1	22,232	...	...
500 to 1,000	49	35,071	49	35,071	...	...	10,000 to 20,000	11	157,921	11	157,921	...	...
200 to 500	60	20,517	60	20,517	...	...	5,000 to 10,000	17	117,314	17	117,314	...	...
Under 200	9	1,109	9	1,109	...	...	2,500 to 5,000	28	94,997	21	73,974	7	21,023
In urbanized areas	16	1,328,065	14	1,153,681	2	174,184	Rural territory	187	165,622	169	138,500	18	27,122
500,000 or more	...	...	...	...	...	...	2,000 to 2,500	15	33,846	12	26,816	3	7,030
250,000 to 500,000	1	305,872	1	305,872	...	...	1,500 to 2,000	17	29,344	15	25,967	2	3,377
100,000 to 250,000	4	611,794	3	448,393	1	163,401	1,000 to 1,500	37	45,735	24	29,020	13	16,715
50,000 to 100,000	4	332,181	4	332,181	...	...	500 to 1,000	49	35,071	49	35,071	...	...
25,000 to 50,000	...	...	...	...	...	...	200 to 500	60	20,517	60	20,517	...	...
20,000 to 25,000	1	22,035	1	22,035	...	...	Under 200	9	1,109	9	1,109	...	...
10,000 to 20,000	4	48,473	3	37,690	1	10,783							

<sup>1</sup> Includes one urban county (Arlington County) with population of 163,401.

Table 5.—POPULATION OF INCORPORATED PLACES OF 10,000 OR MORE FROM EARLIEST CENSUS TO 1960

[Minus sign (-) denotes decrease]

Incorporated place and census year	Population	Increase over preceding census		Incorporated place and census year	Population	Increase over preceding census		Incorporated place and census year	Population	Increase over preceding census	
		Number	Percent			Number	Percent			Number	Percent
ALEXANDRIA CITY: <sup>1</sup>				DANVILLE CITY--Con.				HARRISONBURG CITY:			
1960	91,023	29,236	47.3	1920	21,539	2,519	13.2	1960	11,916	1,106	10.2
1950	61,787	28,264	84.3	1910	19,020	2,500	15.1	1950	10,810	2,042	23.3
1940	33,523	9,374	38.8	1900	16,520	6,215	60.3	1940	8,768	1,536	21.2
1930	24,149	6,089	33.7	1890	10,305	2,779	36.9	1930	7,232	1,357	23.1
1920	18,060	2,731	17.8	1880	7,526	4,063	117.3	1920	5,875	996	20.4
1910	15,329	801	5.5	1870	3,463	...	...	1910	4,879	1,358	38.6
1900	14,528	189	1.3	1860	(?)	...	...	1900	3,521	729	26.1
1890	14,339	680	5.0	1850	1,514	...	...	1890	2,792	-39	-1.4
1880	13,659	89	0.7					1880	2,831	795	39.0
1870	13,570	918	7.3	FAIRFAX TOWN:				1870	2,036	1,013	99.0
1860	12,652	3,918	44.9	1960	13,585	11,639	998.1	1860	1,023	...	...
1850	8,734	275	3.3	1950	1,946	967	98.8				
1840	8,459	218	2.6	1940	979	339	53.0	HOPEWELL CITY:			
1830	8,241	23	0.3	1930	640	124	24.0	1960	17,895	7,676	75.1
1820	8,218	991	13.7	1920	516	103	24.9	1950	10,219	1,540	17.7
1810	7,227	2,256	45.4	1910	413	40	10.7	1940	8,679	-2,648	-23.4
1800	4,971	2,223	80.9	1900	373	...	...	1930	11,327	9,930	710.8
1790	2,748	...	...					1920	1,397	...	...
BRISTOL CITY: <sup>2</sup>				FALLS CHURCH CITY:				LYNCHBURG CITY:			
1960	17,144	1,190	7.5	1960	10,192	2,657	35.3	1960	54,790	7,063	14.8
1950	15,954	6,186	63.3	1950	7,535	4,959	192.5	1950	47,727	3,186	7.2
1940	9,768	928	10.5	1940	2,576	557	27.6	1940	44,541	3,880	9.5
1930	8,840	2,111	31.4	1930	2,019	360	21.7	1930	40,661	10,591	35.2
1920	6,729	482	7.7	1920	1,659	531	47.1	1920	30,070	576	2.0
1910	6,247	1,668	36.4	1910	1,128	121	12.0	1910	29,494	10,603	56.1
1900	4,579	1,677	57.8	1900	1,007	215	27.1	1900	18,891	-818	-4.2
1890	2,902	1,340	85.8	1890	792	132	20.0	1890	19,709	3,750	23.5
1880	1,562	...	...	1880	660	...	...	1880	15,959	9,134	133.8
								1870	6,825	-28	-0.4
CHARLOTTESVILLE CITY:				FREDERICKSBURG CITY:				1860	6,853	-1,218	-15.1
1960	29,427	3,458	13.3	1960	13,639	1,481	12.2	1850	8,071	1,676	26.2
1950	25,969	6,969	33.9	1950	12,158	2,092	20.8	1840	6,395	1,765	38.1
1940	19,400	4,155	27.3	1940	10,066	3,247	47.6	1830	4,630	...	...
1930	15,245	4,557	42.6	1930	6,819	937	15.9				
1920	10,688	3,923	58.0	1920	5,882	8	0.1	MARTINSVILLE CITY:			
1910	6,765	316	4.9	1910	5,874	806	15.9	1960	18,798	1,547	9.0
1900	6,449	658	15.3	1900	5,068	540	11.9	1950	17,251	7,171	71.1
1890	5,591	2,915	108.9	1890	4,528	-482	-9.6	1940	10,080	2,375	30.8
1880	2,676	-162	-5.7	1880	5,010	964	23.8	1930	7,705	3,630	89.1
1870	2,833	...	...	1870	4,046	-976	-19.4	1920	4,075	707	21.0
				1860	5,022	961	23.7	1910	3,368	984	41.3
COVINGTON CITY:				1850	4,061	87	2.2	1900	2,384	...	...
1960	11,062	5,202	88.8	1840	3,974	666	20.1	1890	(?)	...	...
1950	5,860	-440	-7.0	1830	3,308	...	...	1880	289	...	...
1940	6,300	-238	-3.6								
1930	6,538	915	16.3	HAMPTON CITY:				NEWPORT NEWS CITY:			
1920	5,623	1,389	32.8	1960	89,258	83,292	1,396.1	1960	113,662	71,304	168.3
1910	4,234	1,284	43.5	1950	5,966	68	1.2	1950	42,358	5,291	14.3
1900	2,950	2,246	319.0	1940	5,898	-484	-7.6	1940	37,067	2,650	7.7
1890	704	268	61.5	1930	6,382	244	4.0	1930	34,417	-1,179	-3.3
1880	436	...	...	1920	6,138	633	11.5	1920	35,596	15,391	76.2
				1910	5,505	2,741	99.2	1910	20,205	570	2.9
DANVILLE CITY:				1900	2,764	251	10.0	1900	19,635	15,186	341.3
1960	46,577	11,511	32.8	1890	2,513	...	...	1890	4,449	...	...
1950	35,066	2,317	7.1								
1940	32,749	10,502	47.2								
1930	22,247	708	3.3								

<sup>1</sup> Part of District of Columbia from 1791 to 1846.

<sup>2</sup> For population of Bristol, Tenn., see footnote, table 8.

<sup>3</sup> Not returned separately.



Table 6.—AREA AND POPULATION OF COUNTIES AND INDEPENDENT CITIES, URBAN AND RURAL: 1960 AND 1950

[Minus sign (-) denotes decrease. Percent not shown where less than 0.1]

County	Map reference	Land area in square miles, 1960	1960 population						1950 population			Percent increase, 1950 to 1960					
			Total		Urban			Rural			Total	Urban	Rural				
			Number	Per square mile	Total	Percent of total population	Urbanized areas	Other urban territory	Total	Places of 1,000 to 2,500				Other rural territory			
The State.....	...	39,838	3,966,949	99.6	2,204,913	55.6	1,699,695	505,218	1,762,036	108,925	1,653,111	3,318,680	1,560,115	1,758,565	19.5	41.3	0.2
<b>COUNTIES</b>																	
Accomack.....	E-22	470	30,635	65.2	...	...	...	...	30,635	3,890	26,745	33,832	2,724	31,108	-9.4	...	-1.5
Albemarle.....	E-14	739	30,969	41.9	...	...	...	...	30,969	...	26,662	26,662	...	16.2	...	16.2	
Allegheny.....	F-10	446	12,128	27.2	...	...	...	...	12,128	...	12,128	23,139	5,860	17,279	-47.6	...	-29.8
Amelia.....	G-16	366	7,815	21.4	...	...	...	...	7,815	...	7,815	7,908	...	7,908	-1.2	...	-1.2
Amherst.....	F-12	467	22,953	49.1	2,146	9.3	2,146	...	20,807	1,200	19,607	20,332	2,830	17,502	12.9	-24.2	18.9
Appomattox.....	G-13	343	9,148	26.7	...	...	...	...	9,148	1,184	7,964	8,764	...	8,764	4.4	...	4.4
Arlington.....	C-18	24	163,401	6,808.4	163,401	100.0	163,401	...	...	...	135,449	135,449	...	20.6	20.6	...	...
Augusta.....	D-13	986	37,363	37.9	...	...	...	...	37,363	...	37,363	34,154	...	34,154	9.4	...	9.4
Bath.....	E-11	540	5,335	9.9	...	...	...	...	5,335	...	5,335	6,296	...	6,296	-15.3	...	-15.3
Bedford.....	G-11	770	31,028	40.3	5,921	19.1	...	5,921	25,107	...	25,107	29,627	4,061	25,566	4.7	45.8	-1.8
Bland.....	H-8	369	5,982	16.2	...	...	...	...	5,982	...	5,982	6,436	...	6,436	-7.1	...	-7.1
Botetourt.....	F-11	548	16,715	30.5	...	...	...	...	16,715	1,349	15,366	15,766	...	15,766	6.0	...	6.0
Brunswick.....	H-16	579	17,779	30.7	...	...	...	...	17,779	1,941	15,838	20,136	...	20,136	-11.7	...	-11.7
Buchanan.....	G-5	508	36,724	72.3	...	...	...	...	36,724	3,358	33,366	35,748	...	35,748	2.7	...	2.7
Buckingham.....	F-14	576	10,877	18.9	...	...	...	...	10,877	...	10,877	12,288	...	12,288	-11.5	...	-11.5
Campbell.....	H-12	524	32,958	62.9	5,682	17.2	2,383	3,299	27,276	1,070	26,206	28,877	3,332	25,545	14.1	70.5	6.8
Caroline.....	E-17	544	12,725	23.4	...	...	...	...	12,725	...	12,725	12,471	...	12,471	2.0	...	2.0
Carroll.....	I-8	494	23,178	46.9	...	...	...	...	23,178	...	23,178	26,693	2,603	24,092	-13.2	...	-3.8
Charles City.....	G-18	184	5,492	29.8	...	...	...	...	5,492	...	5,492	4,676	...	4,676	17.5	...	17.5
Charlotte.....	H-14	467	13,368	28.6	...	...	...	...	13,368	...	13,368	14,057	...	14,057	-4.9	...	-4.9
Chesterfield.....	G-17	460	71,197	154.8	33,140	46.5	30,142	2,998	38,057	1,290	36,767	40,400	8,590	31,810	76.2	285.8	19.6
Clarke.....	B-16	174	7,942	45.6	...	...	...	...	7,942	1,645	6,297	7,074	...	7,074	12.3	...	12.3
Craig.....	G-10	326	3,356	10.0	...	...	...	...	3,356	...	3,356	3,452	...	3,452	-2.8	...	-2.8
Culpeper.....	D-16	389	15,088	38.8	...	...	...	...	15,088	2,432	12,656	13,242	2,527	10,715	13.9	...	40.8
Cumberland.....	G-15	288	6,360	22.1	...	...	...	...	6,360	...	6,360	7,252	...	7,252	-12.3	...	-12.3
Dickenson.....	H-4	335	20,211	60.3	...	...	...	...	20,211	1,400	18,811	23,393	...	23,393	-13.6	...	-13.6
Dinwiddie.....	H-16	507	22,183	43.8	...	...	...	...	22,183	...	22,183	18,839	...	18,839	17.8	...	17.8
Essex.....	E-18	250	6,690	26.8	...	...	...	...	6,690	1,086	5,604	6,530	...	6,530	2.5	...	2.5
Fairfax.....	B-18	405	275,002	679.0	214,456	78.0	200,871	13,585	60,546	1,960	58,586	98,557	26,961	71,596	179.0	695.4	-15.4
Fauquier.....	B-16	660	24,066	36.5	3,522	14.6	...	3,522	20,544	...	20,544	21,248	...	21,248	13.3	...	-3.3
Floyd.....	I-9	383	10,462	27.3	...	...	...	...	10,462	...	10,462	11,351	...	11,351	-7.8	...	-7.8
Fluvanna.....	E-15	282	7,227	25.6	...	...	...	...	7,227	...	7,227	7,121	...	7,121	1.5	...	1.5
Franklin.....	H-11	718	25,925	36.1	...	...	...	...	25,925	1,432	24,513	24,560	...	24,560	5.6	...	5.6
Frederick.....	A-15	433	21,941	50.7	...	...	...	...	21,941	...	21,941	17,537	...	17,537	25.1	...	25.1
Giles.....	G-9	356	17,219	48.4	2,508	14.6	...	2,508	14,711	3,306	11,405	16,956	2,520	16,436	-9.2	-0.5	-10.5
Gloucester.....	G-19	225	11,919	53.0	...	...	...	...	11,919	...	11,919	10,343	...	10,343	15.2	...	15.2
Goochland.....	F-16	289	9,206	31.9	...	...	...	...	9,206	...	9,206	8,934	...	8,934	3.0	...	3.0
Grayson.....	I-7	450	17,390	38.6	...	...	...	...	17,390	1,039	16,351	21,379	2,645	18,734	-18.7	...	-7.2
Greene.....	D-14	153	4,715	30.8	...	...	...	...	4,715	...	4,715	4,745	...	4,745	-0.6	...	-0.6
Greensville.....	J-16	301	16,155	53.7	5,535	34.3	...	5,535	10,620	...	10,620	16,319	5,664	10,655	-1.0	-2.3	-0.3
Halifax.....	H-13	800	33,637	42.0	...	...	...	...	33,637	...	33,637	41,442	6,057	35,385	-18.8	...	-4.9
Hanover.....	E-17	466	27,550	59.1	2,773	10.1	...	2,773	24,777	...	24,777	21,985	2,610	19,375	25.3	6.2	27.9
Henrico.....	F-17	232	117,339	505.8	83,338	71.0	83,338	...	34,001	1,380	32,621	57,340	29,198	28,142	104.6	185.4	20.8
Henry.....	I-11	384	40,335	105.0	6,734	16.7	...	6,734	33,601	1,499	32,102	31,219	3,421	27,798	29.2	96.8	20.9
Highland.....	D-12	416	3,221	7.7	...	...	...	...	3,221	...	3,221	4,069	...	4,069	-20.8	...	-20.8
Isle of Wight.....	H-19	319	17,164	53.8	...	...	...	...	17,164	...	17,164	14,906	...	14,906	15.1	...	15.1
James City.....	G-19	148	11,539	78.0	...	...	...	...	11,539	...	11,539	6,317	...	6,317	82.7	...	82.7
King and Queen.....	F-18	318	5,889	18.5	...	...	...	...	5,889	...	5,889	6,299	...	6,299	-6.5	...	-6.5
King George.....	D-18	178	7,243	40.7	...	...	...	...	7,243	...	7,243	6,710	...	6,710	7.9	...	7.9
King William.....	F-18	278	7,563	27.2	...	...	...	...	7,563	1,678	5,885	7,589	...	7,589	-0.3	...	-0.3
Lancaster.....	F-20	142	9,174	64.6	...	...	...	...	9,174	...	9,174	8,640	...	8,640	6.2	...	6.2
Lee.....	I-2	434	25,824	59.5	...	...	...	...	25,824	1,799	24,025	36,106	...	36,106	-28.5	...	-28.5
Loudoun.....	A-17	517	24,549	47.5	2,869	11.7	...	2,869	21,680	1,419	20,261	21,147	...	21,147	16.1	...	2.5
Louisa.....	E-15	514	12,959	25.2	...	...	...	...	12,959	...	12,959	12,826	...	12,826	1.0	...	1.0
Lunenburg.....	H-15	443	12,523	28.3	...	...	...	...	12,523	2,925	9,598	14,116	...	14,116	-11.3	...	-11.3
Madison.....	D-15	327	8,187	25.0	...	...	...	...	8,187	...	8,187	8,273	...	8,273	-1.0	...	-1.0
Mathews.....	G-20	87	7,121	81.9	...	...	...	...	7,121	...	7,121	7,148	...	7,148	-0.4	...	-0.4
Mecklenburg.....	I-14	626	31,428	50.2	5,776	18.4	...	5,776	25,652	1,530	24,122	33,497	2,519	30,978	-6.2	129.3	-17.2
Middlesex.....	F-19	132	6,319	47.9	...	...	...	...	6,319	...	6,319	6,715	...	6,715	-5.9	...	-5.9
Montgomery.....	H-9	395	32,923	83.3	10,723	32.6	10,723	...	22,200	...	22,200	29,780	6,325	23,455	10.6	69.5	-3.4
Nansemond.....	I-19	402	31,366	78.0	2,636	8.4	...	2,636	28,730	6,060	22,670	25,238	4,687	20,551	24.3	-43.8	39.8
Nelson.....	E-13	468	12,752	27.2	...	...	...	...	12,752	...	12,752	14,042	...	14,042	-9.2	...	-9.2
New Kent.....	G-18	212	4,504	21.2	...	...	...	...	4,504	...	4,504	3,995	...	3,995	12.7	...	12.7
Norfolk.....	I-20	377	51,632	137.2	18,135	54.5	28,135	...	23,477	...	23,477	99,377	76,622	23,315	-63.3	...	0.7
Northampton.....	G-21	226	16,966	75.1	...	...	...	...	16,966	3,607	13,359	17,300	...	17,300	-1.9	...	-1.9
Northumberland.....	E-20	200	10,185	50.9	...	...	...	...	10,185	...	10,185	10,012	...	10,012	1.7	...	1.7
Nottoway.....	H-16	308	15,141	49.2	3,659	24.2	...	3,659	11,482	2,012	9,470	15,479	3,536	11,943	-2.2	3.5	-3.9
Orange.....	E-15	354	12,900	36.4	2,955	22.9	...	2,955	9,945	1,109	8,8						

Table 6.—AREA AND POPULATION OF COUNTIES AND INDEPENDENT CITIES, URBAN AND RURAL: 1960 AND 1950—Con.

[Minus sign (-) denotes decrease. Percent not shown where less than 0.1]

County	Map reference	Land area in square miles, 1960	1960 population						1950 population			Percent increase, 1950 to 1960					
			Total		Urban			Rural			Total	Urban	Rural	Total	Urban	Rural	
			Number	Per square mile	Total	Percent of total population	Urbanized areas	Other urban territory	Total	Places of 1,000 to 2,500							Other rural territory
<b>COUNTIES—Con.</b>																	
Richmond.....	E-19	192	6,375	33.2	...	...	...	...	6,375	...	6,375	6,189	...	6,189	3.0	...	3.0
Roanoke.....	G-10	277	61,693	222.7	27,642	44.8	27,642	...	34,051	...	34,051	41,486	14,761	26,725	48.7	87.3	27.4
Rockbridge.....	E-12	604	24,039	39.8	7,537	31.4	...	7,537	16,502	1,091	15,411	23,359	5,976	17,383	2.9	26.1	-5.1
Rockingham <sup>16</sup> .....	C-13	868	40,485	46.6	...	...	...	...	40,485	3,321	37,164	35,079	...	35,079	15.4	...	15.4
Russell.....	H-5	483	26,290	54.4	...	...	...	...	26,290	3,521	22,769	26,818	...	26,818	-2.0	...	-2.0
Scott.....	I-4	539	25,813	47.9	...	...	...	...	25,813	3,416	22,397	27,640	...	27,640	-6.6	...	-6.6
Shenandoah.....	C-14	507	21,825	43.0	...	...	...	...	21,825	4,311	17,514	21,169	...	21,169	3.1	...	3.1
Smyth.....	I-6	435	31,056	71.4	10,822	34.8	10,822	10,822	20,244	1,169	19,075	30,187	9,302	20,885	2.9	16.3	-3.1
Southampton.....	I-18	607	27,195	44.8	7,264	26.7	7,264	7,264	19,931	...	19,931	26,522	4,670	21,852	2.5	55.5	-8.8
Spotsylvania <sup>17</sup> .....	E-16	409	13,819	33.8	...	...	...	...	13,819	...	13,819	11,920	...	11,920	15.9	...	15.9
Stafford.....	D-17	271	16,876	62.3	...	...	...	...	16,876	1,478	15,398	11,902	...	11,902	41.8	...	41.8
Surry.....	H-18	280	6,220	22.2	...	...	...	...	6,220	...	6,220	6,220	...	6,220	...	...	...
Sussex.....	I-17	496	12,411	25.0	...	...	...	...	12,411	2,616	9,795	12,785	...	12,785	-2.9	...	-2.9
Tazewell.....	H-6	522	44,791	85.8	12,198	27.2	12,198	12,198	32,593	1,313	31,280	47,512	8,860	38,652	-5.7	37.7	-15.7
Warren.....	B-15	219	14,655	66.9	7,949	54.2	7,949	7,949	6,706	...	6,706	14,801	8,115	6,686	-1.0	-2.0	0.3
Washington.....	I-5	579	38,076	65.8	5,165	13.6	5,165	5,165	32,911	2,892	30,019	37,536	5,067	32,469	1.4	1.9	1.4
Westmoreland.....	E-19	236	11,042	46.8	...	...	...	...	11,042	1,769	9,273	10,148	...	10,148	8.8	...	8.8
Wise <sup>18</sup> .....	H-3	411	43,579	106.0	7,302	16.8	7,302	7,302	36,277	7,218	29,059	56,336	12,403	43,933	-22.6	-41.1	-17.4
Wythe.....	I-7	460	21,975	47.8	5,634	25.6	5,634	5,634	16,341	...	16,341	23,327	5,513	17,814	-5.8	2.2	-8.3
York.....	G-19	123	21,583	175.5	5,954	27.6	5,954	5,954	15,629	...	15,629	11,750	...	11,750	83.7	...	33.0
<b>INDEPENDENT CITIES</b>																	
Alexandria <sup>8</sup> .....	G-18	15	91,023	6,068.2	91,023	100.0	91,023	91,023	...	...	...	61,787	...	61,787	47.3	47.3	...
Bristol.....	J-5	4	17,144	4,286.0	17,144	100.0	17,144	17,144	...	...	...	15,954	...	15,954	7.5	7.5	...
Buena Vista.....	E-12	3	6,300	2,100.0	6,300	100.0	6,300	6,300	...	...	...	5,214	...	5,214	20.8	20.8	...
Charlottesville.....	E-15	6	29,427	4,904.5	29,427	100.0	29,427	29,427	...	...	...	25,969	...	25,969	13.3	13.3	...
Clifton Forge.....	F-11	2	5,268	2,634.0	5,268	100.0	5,268	5,268	...	...	...	5,795	...	5,795	-9.1	-9.1	...
Colonial Heights <sup>7</sup> .....	H-17	8	9,587	1,198.4	9,587	100.0	9,587	9,587	...	...	...	6,077	...	6,077	57.8	57.8	...
Covington <sup>2</sup> .....	F-11	4	11,062	2,765.5	11,062	100.0	11,062	11,062	...	...	...	5,860	...	5,860	88.8	88.8	...
Danville <sup>13</sup> .....	J-12	14	46,577	3,326.9	46,577	100.0	46,577	46,577	...	...	...	35,066	...	35,066	32.8	32.8	...
Falls Church.....	C-18	2	10,192	5,096.0	10,192	100.0	10,192	10,192	...	...	...	7,535	...	7,535	35.3	35.3	...
Fredericksburg <sup>17</sup> .....	E-17	6	13,639	2,273.2	13,639	100.0	13,639	13,639	...	...	...	12,158	...	12,158	12.2	12.2	...
Galax <sup>6</sup> .....	J-8	3	5,254	1,751.3	5,254	100.0	5,254	5,254	...	...	...	5,248	...	5,248	0.1	0.1	...
Hampton <sup>1</sup> .....	H-20	57	89,258	1,565.9	89,258	100.0	89,258	89,258	...	...	...	5,966	...	5,966	1,396.1	1,396.1	...
Harrisonburg <sup>16</sup> .....	D-13	3	11,916	3,972.0	11,916	100.0	11,916	11,916	...	...	...	10,810	...	10,810	10.2	10.2	...
Hopewell <sup>14</sup> .....	H-18	7	17,895	2,556.4	17,895	100.0	17,895	17,895	...	...	...	10,219	...	10,219	75.1	75.1	...
Lynchburg <sup>4</sup> .....	G-13	23	54,790	2,382.2	54,790	100.0	54,790	54,790	...	...	...	47,727	...	47,727	14.8	14.8	...
Martinsville <sup>10</sup> .....	J-11	10	18,798	1,879.8	18,798	100.0	18,798	18,798	...	...	...	17,251	...	17,251	9.0	9.0	...
Newport News <sup>1</sup> .....	I-20	75	113,662	1,515.5	113,662	100.0	113,662	113,662	...	...	...	42,358	...	42,358	168.3	168.3	...
Norfolk <sup>12</sup> .....	I-20	50	305,872	6,117.4	305,872	100.0	305,872	305,872	...	...	...	213,513	...	213,513	43.3	43.3	...
Norton <sup>18</sup> .....	I-4	3	4,996	1,665.3	4,996	100.0	4,996	4,996	...	...	...	4,315	...	4,315	15.8	15.8	...
Petersburg <sup>11</sup> .....	H-17	8	36,750	4,593.8	36,750	100.0	36,750	36,750	...	...	...	35,054	...	35,054	4.8	4.8	...
Portsmouth <sup>12</sup> .....	I-20	18	114,773	6,376.3	114,773	100.0	114,773	114,773	...	...	...	80,039	...	80,039	43.4	43.4	...
Radford.....	H-9	5	9,371	1,874.2	9,371	100.0	9,371	9,371	...	...	...	9,026	...	9,026	3.8	3.8	...
Richmond.....	G-17	37	219,958	5,944.8	219,958	100.0	219,958	219,958	...	...	...	230,310	...	230,310	-4.5	-4.5	...
Roanoke.....	H-11	26	97,110	3,735.0	97,110	100.0	97,110	97,110	...	...	...	91,921	...	91,921	5.6	5.6	...
South Boston <sup>9</sup> .....	J-14	2	5,974	2,987.0	5,974	100.0	5,974	5,974	...	...	...	6,057	...	6,057	-1.4	-1.4	...
South Norfolk <sup>12</sup> .....	I-21	7	22,035	3,147.9	22,035	100.0	22,035	22,035	...	...	...	10,434	...	10,434	111.2	111.2	...
Staunton <sup>3</sup> .....	E-13	9	22,232	2,470.2	22,232	100.0	22,232	22,232	...	...	...	19,927	...	19,927	11.6	11.6	...
Suffolk.....	I-20	2	12,609	6,304.5	12,609	100.0	12,609	12,609	...	...	...	12,339	...	12,339	2.2	2.2	...
Virginia Beach <sup>15</sup> .....	I-21	2	8,091	4,045.5	8,091	100.0	8,091	8,091	...	...	...	5,390	...	5,390	50.1	50.1	...
Waynesboro <sup>3</sup> .....	E-13	7	15,694	2,242.0	15,694	100.0	15,694	15,694	...	...	...	12,357	...	12,357	27.0	27.0	...
Williamsburg.....	H-19	3	6,832	2,277.3	6,832	100.0	6,832	6,832	...	...	...	6,735	...	6,735	1.4	1.4	...
Winchester.....	B-15	3	15,110	5,036.7	15,110	100.0	15,110	15,110	...	...	...	13,841	...	13,841	9.2	9.2	...

<sup>1</sup> State totals include population of Elizabeth City County (total, 55,028; urban, 36,908; and rural, 18,120) which was consolidated with Hampton city in 1952; and of Warwick County (total, 39,875; urban, 24,649; and rural, 15,226) which was incorporated as a city in 1952 and was consolidated with Newport News city in 1958.

<sup>2</sup> Covington town in Allegheny County became a city and made independent of the county in 1952. Figures for 1950 for Covington town are included in Allegheny County. Part of Allegheny County annexed to Covington city since 1952.

<sup>3</sup> Parts of Augusta County annexed to Waynesboro and Staunton cities since 1950.

<sup>4</sup> Part of Bedford County annexed to Lynchburg city since 1950.

<sup>5</sup> Part of Campbell County annexed to Lynchburg city since 1950.

<sup>6</sup> Galax town in Carroll and Grayson Counties became a city and made independent of the counties in 1953. Figures for 1950 for Galax town are included in Carroll and Grayson Counties. Part of Carroll County annexed to Galax city since 1953.

<sup>7</sup> Part of Chesterfield County annexed to Colonial Heights city since 1950.

<sup>8</sup> County boundary between Fairfax and Loudoun Counties re-established since 1950. Part of Fairfax County annexed to Alexandria city since 1950.

<sup>9</sup> South Boston town in Halifax County became a city and made independent of the county in 1960. Figures for South Boston town are included in Halifax County.

<sup>10</sup> Part of Henry County annexed to Martinsville city since 1950.

<sup>11</sup> Boundary changed between James City and New Kent Counties since 1950.

<sup>12</sup> Parts of Norfolk County annexed to Norfolk, Portsmouth, and South Norfolk cities since 1950. Part of Portsmouth city detached and area reverted to Norfolk County since 1950.

<sup>13</sup> Part of Pittsylvania County annexed to Danville city since 1950.

<sup>14</sup> Parts of Prince George County annexed to Petersburg and Hopewell cities since 1950.

<sup>15</sup> Virginia Beach town in Princess Anne County became a city and made independent of the county in 1952. Figures for 1950 for Virginia Beach town are included in Princess Anne County. Part of Princess Anne County annexed to Norfolk city since 1950.

<sup>16</sup> Part of Rockingham County annexed to Harrisonburg city since 1950.

<sup>17</sup> Part of Spotsylvania County annexed to Fredericksburg city since 1950.

<sup>18</sup> Norton town in Wise County became a city and made independent of the county in 1954. Figures for 1950 for Norton town are included in Wise County. Part of Wise County annexed to Norton city since 1954.

The revised population total for Norfolk is 304,869. The figure in the table includes population for an area misclassified as inside, rather than outside, the city limits. This error was discovered too late for correction in the detailed distributions.

The revised population total for Norton is 5,013. The figure in the table excludes population for an area misclassified as outside, rather than inside, the city limits. This error was discovered too late for correction in the detailed distributions.



Table 7.—POPULATION OF COUNTIES, BY MINOR CIVIL DIVISIONS: 1940 TO 1960—Con.

["U" denotes an unincorporated place. For changes in boundaries, etc., between 1940 and 1960, see table 6 for this State in U. S. Census of Population: 1960, Vol. I or II. Total population of a place located in 2 or more minor civil divisions appears in table 8. Minor civil division figures for 1950 and 1940 do not necessarily add to county totals. "Districts" shown here are magisterial districts]

County and minor civil division	1960	1950	1940	County and minor civil division	1960	1950	1940	County and minor civil division	1960	1950	1940
FLUVANNA COUNTY.....	7,227	7,121	7,088	HENRICO COUNTY.....	117,339	57,340	41,960	LOUISA COUNTY.....	12,959	12,826	13,665
Columbia dist.....	1,232	1,375	1,604	Brookland dist.....	38,845	20,623	13,657	Cuckoo dist.....	2,283	2,285	2,509
Columbia town.....	86	119	144	Fairfield dist.....	31,445	18,805	11,649	Green Spring dist.....	2,258	2,251	2,584
Cummingham dist.....	1,837	1,845	1,719	Levis Gardens (U).....	1,380	.....	.....	Jackson dist.....	2,429	2,563	2,591
Scottsville town (pt.).....	61	54	50	Tuckahoe dist.....	38,326	11,095	11,123	Louisa dist.....	3,503	3,258	3,267
Fork Union dist.....	2,599	2,629	2,420	Varina dist.....	6,817	5,531	.....	Louisa town.....	576	344	365
Palmyra dist.....	1,559	1,272	1,345	HENRY COUNTY <sup>15</sup> .....	40,335	31,219	26,481	Mineral dist.....	2,484	2,469	2,714
FRANKLIN COUNTY <sup>11</sup> .....	25,925	24,560	25,864	Horse Pasture dist.....	14,186	11,819	9,574	Mineral town.....	366	414	427
Blackwater dist. <sup>11</sup> .....	2,130	1,519	2,313	Bassetts (U) (pt.).....	1,041	866	.....	LUNENBURG COUNTY.....	12,523	14,116	13,844
Blue Ridge dist. <sup>11</sup> .....	4,878	.....	.....	Fieldale (U) (pt.).....	1,396	1,160	.....	Browns Store dist.....	3,371	3,622	3,040
Boone dist. <sup>11</sup> .....	4,376	.....	.....	Irisburg dist.....	2,337	2,142	1,615	Kenbridge town.....	1,188	1,176	847
Boones Mill town <sup>11</sup> .....	371	335	377	Leatherwood dist.....	3,010	2,716	2,646	Columbian Grove dist.....	1,089	1,463	1,475
Gills Creek dist.....	1,965	1,834	2,874	Martinsville dist. <sup>15</sup> .....	7,641	4,072	3,837	Lewiston dist.....	944	1,103	1,310
Rocky Mount dist.....	7,100	6,196	5,777	Collinsville (U) (pt.).....	3,221	.....	.....	Loch Leven dist.....	1,412	1,746	1,811
Rocky Mount town.....	1,412	1,432	1,366	Fieldale (U) (pt.).....	103	135	.....	Pleasant Grove dist.....	1,499	1,706	1,567
Snow Creek dist.....	2,224	2,200	2,449	Reed Creek dist.....	8,018	6,731	5,973	Plymouth dist.....	3,104	3,066	2,937
Union Hall dist.....	3,252	3,264	3,525	Bassetts (U) (pt.).....	2,107	2,555	.....	Victoria town.....	1,737	1,607	1,555
FRREDRICK COUNTY.....	21,941	17,537	14,008	Collinsville (U) (pt.).....	365	.....	.....	Rehoboth dist.....	1,104	1,410	1,704
Back Creek dist.....	1,812	1,923	1,722	Ridgeway dist.....	5,143	3,739	2,836	MADISON COUNTY <sup>19</sup> .....	8,187	8,273	8,465
Gainesboro dist.....	2,411	2,312	2,015	Ridgeway town.....	524	440	422	Locustdale dist.....	2,896	2,853	2,671
Opequan dist.....	4,772	4,256	3,728	HIGHLAND COUNTY.....	3,221	4,069	4,875	Rapidan dist.....	2,315	2,262	2,466
Middletown town.....	378	386	361	Blue Grass dist.....	892	1,140	1,422	Madison town.....	4510	308	281
Stephens City town.....	876	676	600	Monterey dist.....	1,445	1,665	1,942	Robertson dist.....	2,976	3,158	3,328
Shawnee dist.....	6,560	4,178	2,835	Monterey town.....	270	262	309	MATHEWS COUNTY.....	7,121	7,148	7,149
Stonewall dist.....	6,386	4,868	3,708	Stonewall dist.....	884	1,264	1,511	Chesapeake dist.....	2,264	2,275	2,283
GILES COUNTY.....	17,219	18,956	14,635	McDowell town.....	127	107	110	Flankitank dist.....	2,501	2,404	2,431
Narrows dist.....	6,272	6,970	.....	ISLE OF WIGHT COUNTY.....	17,164	14,906	13,381	Westville dist.....	2,356	2,469	2,435
Glen Lyn town.....	222	240	259	Hardy dist.....	5,093	4,404	4,239	MECKLENBURG COUNTY.....	31,428	33,497	31,933
Narrows town <sup>12</sup> .....	2,508	2,520	1,489	Newport dist.....	6,889	5,742	5,001	Bluestone dist.....	2,018	2,254	2,233
Rih Creek town.....	748	740	.....	Smithfield town.....	917	1,180	1,178	Boydton dist.....	3,520	4,287	4,052
Newport dist.....	958	1,126	1,007	Windsor dist.....	5,182	4,760	4,141	Boydton town.....	449	501	424
Pearisburg dist.....	4,706	4,504	7,965	Windsor town.....	579	451	411	Backhorn dist.....	2,777	3,397	3,236
Pearisburg town <sup>12</sup> .....	2,268	2,005	987	JAMES CITY COUNTY <sup>16</sup> .....	11,539	6,317	4,907	Chase City dist. <sup>15</sup> .....	6,471	6,397	6,157
Pembroke dist.....	3,234	3,730	3,481	Jamestown dist.....	8,330	3,995	2,424	Chase City town.....	3,207	2,519	1,896
Pembroke town.....	1,038	1,010	.....	Powhatan dist. <sup>16</sup> .....	2,198	1,804	1,650	Clarksville dist.....	4,900	5,268	4,727
Walkers Creek dist.....	2,049	2,626	2,182	Stonehouse dist. <sup>16</sup> .....	1,011	918	833	Clarksville town <sup>16</sup> .....	1,530	1,035	826
GLOUCESTER COUNTY.....	11,919	10,343	9,548	KING AND QUEEN COUNTY.....	5,889	6,299	6,954	La Crosse dist.....	4,204	4,442	4,371
Abingdon dist.....	6,907	5,672	5,075	Buena Vista dist.....	2,272	2,289	2,195	Brodnax town (pt.).....	119	90	69
Petersworth dist.....	1,527	1,534	1,554	Newtown dist.....	2,366	2,478	2,803	La Crosse town.....	726	675	524
Ware dist.....	3,485	3,137	2,919	Stevensville dist.....	1,251	1,532	1,956	Palmer Springs dist.....	1,448	2,055	2,226
GOOCHLAND COUNTY.....	9,206	8,934	8,454	KING GEORGE COUNTY.....	7,243	6,710	5,431	South Hill dist.....	6,090	5,497	4,931
Byrd dist.....	2,158	2,199	2,439	Potomac dist.....	3,759	3,600	2,380	South Hill town.....	2,569	2,153	1,739
Dover dist.....	3,423	2,960	2,774	Rappahannock dist.....	2,109	1,807	1,735	MIDDLESEX COUNTY.....	6,319	6,715	6,673
Lickinghole dist.....	3,625	3,775	3,241	Shiloh dist.....	1,375	1,303	1,316	Jamaica dist.....	1,076	1,319	1,383
GRAYSON COUNTY <sup>13</sup> .....	17,390	21,379	21,916	KING WILLIAM COUNTY.....	7,563	7,589	7,855	Pine Top dist.....	2,499	2,697	2,542
Elk Creek dist.....	3,766	4,435	4,000	Accquinton dist.....	2,075	1,959	2,364	Saluda dist.....	2,744	2,699	2,748
Independence town.....	679	6,986	6,434	Mangohick dist.....	1,499	1,426	1,331	Urbanna town.....	512	505	482
Old Town dist. <sup>13</sup> .....	4,973	4,431	4,441	West Point dist.....	3,989	4,204	4,160	MONTGOMERY COUNTY.....	32,923	29,780	21,206
Providence dist.....	1,039	1,442	1,555	West Point town.....	1,678	1,919	1,947	Alleghany dist.....	3,555	3,851	3,157
Fries town.....	1,442	1,555	.....	LANCASTER COUNTY.....	9,174	8,640	8,786	Auburn dist.....	3,605	3,753	3,301
Wilson Creek dist.....	4,510	5,519	7,041	Mantua dist.....	1,723	1,659	1,802	Blacksburg dist.....	15,536	13,459	8,329
Troutdale town.....	273	250	334	White Chapel dist.....	2,110	2,066	2,167	Blacksburg town <sup>21</sup> .....	7,070	3,358	2,133
GHERNE COUNTY.....	4,715	4,745	5,218	White Stone dist.....	5,341	4,915	4,817	Christiansburg dist.....	10,227	8,717	6,419
Monroe dist.....	1,312	1,605	1,790	Irvington town <sup>17</sup> .....	570	.....	.....	Cambrisa town.....	722	853	810
Ruckersville dist.....	1,731	1,566	1,666	Kilmarnock town (pt.).....	845	628	597	Christiansburg town.....	3,653	2,967	2,299
Stanardsville dist.....	1,672	1,574	1,762	White Stone town <sup>17</sup> .....	395	.....	.....	NANSEMOND COUNTY.....	31,366	25,238	22,771
Stanardsville town.....	283	182	212	LEE COUNTY.....	25,824	36,106	39,296	Chuckatuck dist.....	7,069	5,750	5,173
GREENSVILLE COUNTY.....	16,155	16,319	14,866	Jonesville dist.....	5,197	6,336	6,664	Cypress dist.....	7,424	5,413	4,723
Belfield dist.....	8,028	8,059	6,929	Jonesville town.....	711	597	588	Jericho (U) (pt.).....	1,960	.....	.....
Emporia town (pt.).....	3,150	3,445	1,441	Rocky Station dist.....	10,292	15,624	16,861	Lloyd Place (U).....	2,282	.....	.....
Jarvatt town (pt.).....	467	400	231	Pennington Gap town.....	1,799	2,090	1,990	Pleasant Hill (U) (pt.).....	970	.....	.....
Hicksford dist.....	5,735	5,427	5,083	St. Charles town.....	368	550	482	Holy Neck dist.....	8,055	6,902	6,079
Emporia town (pt.).....	1,734	1,648	1,070	Rose Hill dist.....	4,355	5,845	6,477	Holland town.....	3,378	289	378
Zion dist.....	2,392	2,833	2,854	White Shoals dist.....	1,995	3,287	3,694	Saratoga Place (U).....	1,478	1,314	.....
Emporia town (pt.).....	651	571	224	Yokum Station dist.....	3,985	5,014	5,600	Sleepy Hole dist.....	4,508	3,649	3,799
HALIFAX COUNTY <sup>14</sup> .....	33,637	41,442	41,271	LOUDOUN COUNTY <sup>18</sup> .....	24,549	21,147	20,291	Jericho (U) (pt.).....	340	.....	.....
Banister dist. <sup>14</sup> .....	6,828	12,322	10,290	Broad Run dist.....	4,964	3,773	3,193	Whaleyville dist.....	4,320	3,524	3,017
Halfax town.....	792	791	536	Jefferson dist.....	3,534	3,166	2,910	Pleasant Hill (U) (pt.).....	1,666	.....	.....
Birch Creek dist.....	3,189	3,696	4,134	Hamilton town (pt.).....	188	179	105	Whaleyville town <sup>22</sup> .....	402	.....	.....
Black Walnut dist.....	4,403	4,656	4,500	Hillsboro town.....	124	129	115	NELSON COUNTY.....	12,752	14,042	16,241
Meadsville dist.....	2,397	2,342	2,738	Rollsboro town.....	188	179	105	Lovingson dist.....	4,834	5,247	6,235
Mount Carmel dist.....	2,017	2,475	2,747	Round Hill town.....	430	403	337	Massies Mill dist.....	3,180	3,719	4,436
Redbank dist.....	2,343	2,542	2,615	Leesburg dist.....	5,335	4,134	4,478	Rockfish dist.....	2,566	2,547	2,767
Virgilina town.....	286	323	358	Leesburg town <sup>18</sup> .....	2,869	1,703	1,698	Schuyler dist.....	2,172	2,529	2,803
Roanoke dist.....	6,622	6,993	7,610	Lovettsville dist.....	2,287	2,050	2,267	NEW KENT COUNTY <sup>23</sup> .....	4,504	3,995	4,092
Clover town.....	261	274	252	Lovettsville town.....	217	341	248	Black Creek dist.....	1,065	1,127	917
Scottsbug town.....	188	222	239	Merger dist.....	3,950	3,980	3,739	Cumberland dist.....	1,304	1,153	1,390
Staunton dist.....	5,838	6,416	6,637	Middleburg town.....	761	663	629	St. Peters dist.....	930	812	953
HANOVER COUNTY.....	27,550	21,985	18,500	Mount Gilead dist.....	4,479	4,044	3,704	Weir Creek dist. <sup>23</sup> .....	1,205	903	832
Ashland dist.....	11,111	9,353	7,033	Hamilton town (pt.).....	215	172	304				
Ashland town.....	2,773	2,610	1,718	Rurcellville town.....	1,419	945	787				
Beaverdam dist.....	5,596	5,385	5,309								
Henry dist.....	10,843	7,247	6,158								

The revised population total for Madison town is 301. The figure in the table includes population for an area misclassified as inside, rather than outside, the city limits. This error was discovered too late for correction in the detailed distributions. See other footnotes at end of table, p. 17.

Table 7.—POPULATION OF COUNTIES, BY MINOR CIVIL DIVISIONS: 1940 TO 1960—Con.

["U" denotes an unincorporated place. For changes in boundaries, etc., between 1940 and 1960, see table 6 for this State in U. S. Census of Population: 1960, Vol. I or II. Total population of a place located in 2 or more minor civil divisions appears in table 8. Minor civil division figures for 1950 and 1940 do not necessarily add to county totals. "Districts" shown here are magisterial districts]

County and minor civil division	1960	1950	1940	County and minor civil division	1960	1950	1940	County and minor civil division	1960	1950	1940
<b>NORFOLK COUNTY<sup>24</sup></b>	<b>51,612</b>	<b>99,937</b>	<b>35,828</b>	<b>PRINCE GEORGE COUNTY<sup>30</sup></b>	<b>20,270</b>	<b>19,679</b>	<b>12,226</b>	<b>ROCKINGHAM COUNTY—Con.</b>			
Butts Road dist.	3,346	2,481	2,165	Blackwater dist.	1,709	1,509	1,426	Plains dist.	8,312	7,385	6,700
Deep Creek dist.	11,719	23,068	8,335	Bland dist. <sup>30</sup>	9,470	12,336	5,575	Broadway town	646	561	506
Pleasant Grove dist.	7,073	4,579	3,697	Brandon dist.	716	764	889	Timberville town	412	271	253
Washington dist. <sup>24</sup>	18,952	17,280	6,948	Rivers dist. <sup>30</sup>	6,865	3,431	2,765	Stonewall dist.	9,598	9,325	8,277
Western Branch dist. <sup>24</sup>	10,522	13,437	7,189	Templeton dist.	1,510	1,639	1,571	Elkton town	1,306	1,361	1,050
								Grovettes town (pt.)	969	908	759
<b>NORTHAMPTON COUNTY</b>	<b>16,966</b>	<b>17,300</b>	<b>17,597</b>	<b>PRINCE WILLIAM COUNTY</b>	<b>50,164</b>	<b>22,612</b>	<b>17,738</b>	<b>RUSSELL COUNTY</b>	<b>26,290</b>	<b>26,818</b>	<b>26,627</b>
Capeville dist.	7,123	7,294	7,418	Brentsville dist.	2,499	2,031	1,882	Castlewood dist.	6,837	7,401	7,428
Cape Charles town <sup>25</sup>	2,041	2,427	2,299	Coles dist.	1,667	929	856	Dante (U)	1,436	2,405	...
Cheriton town <sup>25</sup>	761	...	...	Dumfries dist.	17,452	9,388	7,813	Cleveland dist.	1,841	1,857	2,125
Eastville dist.	3,851	4,209	4,423	Dumfries (U)	1,368	...	...	Cleveland town	415	388	...
Eastville town	261	311	316	Quantico town	1,015	1,240	1,139	Copper Creek dist.	2,000	2,087	2,200
Franktown dist.	5,992	5,797	5,756	Triangle (U)	2,948	...	...	ELY Garden dist.	2,007	1,854	2,016
Exmore town	1,566	1,362	...	Gainesville dist.	2,941	2,331	2,040	Lebanon dist.	4,180	3,715	3,439
Nassawadox town <sup>25</sup>	650	...	...	Haymarket town	297	213	156	Lebanon town	2,085	672	622
				Manassas dist.	15,946	5,599	3,827	Moccasin dist.	1,171	1,421	1,167
<b>NORTHUMBERLAND COUNTY</b>	<b>10,185</b>	<b>10,012</b>	<b>10,463</b>	Manassas town <sup>31</sup>	3,555	1,804	1,302	New Garden dist.	8,254	8,483	8,252
Fairfield dist.	3,551	3,605	3,881	Manassas Park town <sup>31</sup>	5,342	...	...	Honaker town	851	847	851
Heathsville dist.	995	1,774	1,958	Ocoquan dist.	9,659	2,374	1,320	<b>SCOTT COUNTY</b>	<b>25,813</b>	<b>27,640</b>	<b>26,989</b>
Lottsburg dist.	2,798	2,741	2,722	Ocoquan town	301	317	213	De Kalb dist.	3,003	3,573	3,803
Wisconsin dist.	2,841	1,892	1,902	<b>PRINCESS ANNE COUNTY<sup>32</sup></b>	<b>476,124</b>	<b>42,277</b>	<b>19,984</b>	Estillville dist.	9,247	8,731	6,836
Kilmarnock town (pt.)	82	61	17	Bayside dist. <sup>32</sup>	428,045	...	...	Gate City town	2,142	2,126	1,565
<b>NOTTOWAY COUNTY</b>	<b>15,141</b>	<b>15,479</b>	<b>15,556</b>	Blackwater dist.	733	631	530	Weber City town <sup>37</sup>	1,274	...	...
Bellefonte dist.	5,860	5,824	5,780	Kempeville dist. <sup>32</sup>	13,900	20,934	7,609	Floyd dist.	1,811	2,114	1,978
Blackstone town	3,659	3,536	2,699	Acredale (U)	1,022	...	...	Dungannon town	444	431	333
Blendon dist.	1,671	1,971	2,271	Lynnhaven dist. <sup>32</sup>	23,731	15,601	7,070	Fulkerson dist.	2,271	2,930	2,984
Haytokah dist.	3,201	3,223	3,226	Bay Colony-North Linhorn Park (U)	1,151	...	...	Johnson dist.	3,091	3,596	3,671
Barkville town	3,705	695	658	Lenox (U)	1,520	...	...	Nickelville town	291	268	256
Wilmington dist.	4,409	4,361	3,679	Londonbridge (U)	1,061	...	...	Powell dist.	2,664	2,831	3,950
Crewe town	2,012	2,030	2,048	North Virginia Beach (U)	2,887	1,593	...	Taylor dist.	3,726	3,865	3,567
				Oceanic (U)	2,448	...	...	Clinchport town	302	359	346
<b>ORANGE COUNTY</b>	<b>12,900</b>	<b>12,755</b>	<b>12,649</b>	Seatack (U)	3,120	...	...	Duffield town	97	176	83
Barbour dist.	1,942	1,967	2,055	Fungo dist.	2,504	2,187	2,146	<b>SHENANDOAH COUNTY</b>	<b>21,825</b>	<b>21,169</b>	<b>20,898</b>
Gordonsville town (pt.) <sup>26</sup>	69	...	...	Seaboard dist.	7,211	2,944	2,629	Ashby dist.	3,829	4,047	3,865
Gordon dist.	1,398	1,440	1,574	<b>PULASKI COUNTY</b>	<b>27,258</b>	<b>27,758</b>	<b>22,767</b>	Mount Jackson town	722	732	562
Madison dist.	6,566	6,402	5,914	Dublin dist.	6,500	6,165	3,909	David dist.	5,314	4,927	4,772
Gordonsville town (pt.) <sup>26</sup>	1,040	1,118	508	Dublin town (pt.)	1,295	1,239	576	Strasburg town	2,428	2,022	1,968
Orange town	2,955	2,571	1,980	Fairlawn (U)	1,325	...	...	Johnston dist.	2,429	2,373	2,397
Taylor dist.	2,994	2,946	3,106	Hiwassee dist.	2,445	2,405	2,622	Toms Brook town (pt.)	1,37	137	137
				Newbern dist.	3,235	3,296	3,044	Woodstock town (pt.)	649	620	564
<b>PAGE COUNTY</b>	<b>15,372</b>	<b>15,152</b>	<b>14,863</b>	Draper town	233	258	241	Lee dist.	3,005	2,791	2,922
Luray dist.	4,541	4,431	4,428	Dublin town (pt.)	132	74	...	New Market town	783	701	629
Luray town (pt.) <sup>27</sup>	2,629	2,635	1,511	Pulaski dist.	15,378	15,892	13,192	Madison dist.	3,206	3,163	3,246
Marksville dist.	3,763	3,124	3,312	North Pulaski (U)	1,156	1,557	...	Edinburg town	517	533	565
Stanley town <sup>27</sup>	1,039	399	317	Pulaski town <sup>33</sup>	10,469	9,202	8,792	Stonewall dist.	4,042	3,868	3,696
Shenandoah Iron Works dist.	4,981	5,389	5,073	<b>RAPPAHANNOCK COUNTY</b>	<b>5,368</b>	<b>6,112</b>	<b>7,208</b>	Toms Brook town (pt.)	107	119	82
Shenandoah town	1,639	1,903	1,829	Hampton dist.	1,330	1,489	1,764	Woodstock town (pt.)	1,434	1,196	982
Springfield dist. <sup>27</sup>	2,287	2,208	1,850	Washington town	255	249	245	<b>SMYTH COUNTY</b>	<b>31,066</b>	<b>30,187</b>	<b>28,861</b>
Luray town (pt.) <sup>27</sup>	185	96	...	Hawthorne dist.	405	470	617	Marion dist.	17,970	16,309	14,445
				Jackson dist.	1,028	1,118	1,291	Chilhowie town	1,169	1,022	889
<b>PATRICK COUNTY</b>	<b>15,282</b>	<b>15,642</b>	<b>16,613</b>	Piedmont dist.	797	961	1,091	Marion town <sup>38</sup>	8,265	6,982	5,177
Blue Ridge dist.	1,571	1,710	1,851	Stonewall dist.	653	696	875	Rich Valley dist.	8,268	8,714	9,280
Dan River dist.	3,176	3,244	3,483	Wakefield dist.	1,155	1,378	1,570	Saltville town (pt.)	2,437	2,320	2,145
Mayo River dist.	5,262	5,029	5,060	<b>RICHMOND COUNTY</b>	<b>6,375</b>	<b>6,189</b>	<b>6,634</b>	St. Clair dist.	4,830	5,164	5,136
Stuart town (pt.)	464	401	475	Farnham dist.	1,172	1,262	1,359	<b>SOUTHAMPTON COUNTY</b>	<b>27,195</b>	<b>26,522</b>	<b>26,442</b>
Peters Creek dist.	2,815	3,072	3,255	Marshall dist.	2,203	1,994	2,176	Berlin and Ivor dist.	3,159	3,375	3,458
Stuart town (pt.)	510	448	245	Warsaw town	549	435	...	Ivor town	398	377	339
Smith River dist.	2,458	2,587	2,964	Stonewall dist.	795	936	...	Boykins dist.	3,012	3,625	3,694
				Washington dist.	2,777	2,138	2,163	Boykins town	710	811	699
<b>PITTSYLVANIA COUNTY<sup>28</sup></b>	<b>58,296</b>	<b>66,096</b>	<b>61,697</b>	<b>ROANOK COUNTY</b>	<b>61,693</b>	<b>41,486</b>	<b>42,897</b>	Branchville town	158	169	153
Banister dist.	3,133	3,696	4,033	Big Lick dist.	13,901	9,681	17,341	Capron dist.	2,185	2,285	2,479
Callands dist.	4,283	4,438	4,753	Vinton town	3,432	3,629	3,455	Capron town	327	281	291
Chatham dist.	11,554	11,249	10,396	Catawba dist.	2,390	1,888	1,591	Franklinville dist.	2,336	2,777	2,913
Chatham town <sup>28</sup>	1,622	1,456	1,230	Gave Spring dist.	13,729	7,514	6,982	Franklin town <sup>39</sup>	9,979	8,072	6,542
Gretna town (pt.)	806	680	528	Salem dist. <sup>31</sup>	31,673	22,403	16,983	Drewryville dist.	7,264	4,670	3,466
Dan River dist.	11,345	11,323	10,394	Salem town <sup>31</sup>	16,058	6,823	5,737	Jerusalem dist. <sup>39</sup>	3,753	3,553	3,722
Glenwood (U)	1,857	1,913	...	<b>ROCKBRIDGE COUNTY</b>	<b>24,039</b>	<b>23,359</b>	<b>22,384</b>	Courtland town <sup>39</sup>	855	443	459
Pigg River dist. <sup>28</sup>	3,448	3,882	4,027	Buffalo dist.	1,508	1,651	2,021	Newsoms dist.	2,771	3,335	3,634
Gretna town (pt.)	94	123	51	Kerra Creek dist.	1,545	1,477	1,910	Newsoms town	423	392	...
Staunton River dist. <sup>28</sup>	7,176	6,781	6,419	Lexington dist. <sup>33</sup>	9,288	8,557	6,060	<b>SPOTSYLVANIA COUNTY<sup>40</sup></b>	<b>13,819</b>	<b>11,920</b>	<b>9,905</b>
Tunstall dist. <sup>28</sup>	17,357	24,747	21,675	Lexington town <sup>33</sup>	7,537	5,976	3,914	Berkeley dist.	2,356	2,122	2,034
				Natural Bridge dist.	5,799	5,254	5,061	Chancellor dist.	3,175	2,547	2,072
<b>POWATAN COUNTY</b>	<b>6,747</b>	<b>5,556</b>	<b>5,671</b>	Glasgow town <sup>35</sup>	1,091	810	938	Courtland dist. <sup>40</sup>	5,780	4,834	3,092
Huguenot dist.	2,067	1,710	1,619	South River dist.	3,772	3,797	4,232	Livingston dist.	2,508	2,417	2,707
Macon dist.	1,810	1,938	1,766	Walkers Creek dist.	2,127	2,623	3,100	<b>STAFFORD COUNTY</b>	<b>16,876</b>	<b>11,902</b>	<b>9,548</b>
Spencer dist.	2,870	1,908	2,286	Goshen town	99	124	187	Aquia dist.	5,119	3,943	3,223
				<b>ROCKINGHAM COUNTY<sup>36</sup></b>	<b>40,485</b>	<b>35,079</b>	<b>31,289</b>	Falmouth dist. <sup>41</sup>	7,093	4,033	3,127
<b>PRINCE EDWARD COUNTY</b>	<b>14,121</b>	<b>15,398</b>	<b>14,922</b>	Ashby dist.	9,530	8,963	7,937	Falmouth (U) (pt.)	968	478	...
Buffalo dist.	868	1,169	1,435	Bridgewater town	1,815	1,537	993	Hartwood dist. <sup>41</sup>	3,205	2,896	2,107
Pamplin City town (pt.)	17	28	23	Dayton town	930	788	632	Falmouth (U) (pt.)	510	698	...
Farmville dist. <sup>39</sup>	6,146	6,116	4,965	Mount Crawford town	247	303	290	Rock Hill dist.	1,459	1,030	1,091
Farmville town <sup>39</sup>	4,293	4,375	3,475	Central dist. <sup>36</sup>	7,563	5,412	4,689	<b>SURRY COUNTY</b>	<b>6,220</b>	<b>6,220</b>	<b>6,193</b>
Hamden dist.	2,243	2,430	2,113	Linville dist.	5,482	3,994	3,686	Blackwater dist.	1,802	1,914	1,949
Leigh dist.	958	1,347	1,644	Singers Glen town	102	126	120	Dendron town	403	476	465
Lockett dist.	1,746	1,870	2,028	<b>ROCKINGHAM COUNTY<sup>36</sup></b>	<b>40,485</b>	<b>35,079</b>	<b>31,289</b>	Cobham dist.	2,567	2,327	2,198
Prospect dist.	2,160	2,466	2,737	Ashby dist.	9,530	8,963	7,937	Surry town	288	248	254
Pamplin City town (pt.)	221	30	...	Bridgewater town	1,815						



Table 7.—POPULATION OF COUNTIES, BY MINOR CIVIL DIVISIONS: 1940 TO 1960—Con.

["U" denotes an unincorporated place. For changes in boundaries, etc., between 1940 and 1960, see table 6 for this State in U. S. Census of Population: 1960, Vol. I or II. Total population of a place located in 2 or more minor civil divisions appears in table 8. Minor civil division figures for 1950 and 1940 do not necessarily add to county totals. "Districts" shown here are magisterial districts]

County and minor civil division	1960	1950	1940	County and minor civil division	1960	1950	1940	County and minor civil division	1960	1950	1940
SUSSEX COUNTY.....	12,411	12,785	12,485	WASHINGTON COUNTY.....	38,076	37,536	38,197	WISE COUNTY--Con.			
Courthouse dist.....	1,636	1,747	1,820	Abingdon dist.....	9,311	9,236	7,899	Richmond dist.....	15,186	20,730	20,236
Henry dist.....	2,156	2,378	2,430	Abingdon town <sup>43</sup> .....	4,758	4,709	3,158	Appalachia town.....	2,456	2,915	3,010
Jarratt town (pt.).....	141	174	227	Glade Spring dist. <sup>42</sup> .....	5,413	5,460	4,359	Big Stone Gap town.....	4,688	5,173	4,331
Neville dist.....	982	1,178	1,446	Glade Spring town <sup>42</sup> .....	1,407	827	686	Roberson dist.....	5,935	6,221	5,373
Stony Creek dist.....	2,455	2,604	2,588	Goodson dist.....	2,130	6,598	9,192	Pound town.....	1,135	1,193	...
Stony Creek town.....	437	482	493	Holston dist.....	5,010	6,186	5,529				
Wakefield dist.....	2,184	2,005	1,741	Damascus town.....	1,485	1,726	1,441	WYTHE COUNTY.....	21,975	23,327	22,721
Wakefield town.....	1,015	949	687	Kinderhook dist.....	2,819	2,784	3,270	Black Lick dist.....	3,474	4,060	3,940
Waverly dist.....	2,998	2,873	2,460	North Fork dist.....	2,449	2,703	2,974	Rural Retreat town.....	413	478	440
Waverly town.....	1,601	1,502	1,288	Saltville dist.....	3,944	4,569	4,974	Fort Chiswell dist.....	3,329	3,577	3,473
				Saltville town (pt.).....	407	358	505	Lead Mines dist.....	4,399	4,976	5,275
								Speedwell dist.....	2,342	2,817	2,966
TAZEWELL COUNTY.....	44,791	47,512	41,607	WESTMORELAND COUNTY.....	11,042	10,148	9,512	Wytheville dist.....	8,431	7,897	7,087
Clear Fork dist.....	15,235	17,766	15,782	Cuple dist.....	4,626	4,350	4,006	Wytheville town.....	5,634	5,513	4,653
Bluefield town <sup>42</sup> .....	4,235	4,212	3,921	Montross dist.....	2,458	2,236	2,134				
Pocahontas town.....	1,313	2,410	2,623	Montross town.....	394	331	...	YORK COUNTY.....	21,583	11,750	8,857
Jeffersonville dist.....	12,049	13,194	11,614	Washington dist.....	3,958	3,562	3,372	Bethel dist. <sup>45</sup> .....	3,079	...	1,993
North Tazewell town.....	713	816	688	Washington town.....	1,769	1,464	1,105	Bruton dist.....	5,371	1,965	1,930
Tazewell town <sup>42</sup> .....	3,000	1,347	1,374	Colonial Beach town.....				Grafton dist.....	5,778	2,772	2,130
Maiden Spring dist.....	17,507	16,552	14,211	WISE COUNTY <sup>44</sup> .....	43,579	56,336	52,458	Nelson dist.....	3,277	2,716	1,175
Cedar Bluff town.....	995	1,083	823	Gladeville dist. <sup>44</sup> .....	12,070	18,732	16,928	Yorktown town.....	311	384	521
Richlands town.....	4,963	4,648	2,203	Wise town <sup>44</sup> .....	2,614	1,574	1,226	Poquoson dist. <sup>45</sup> .....	4,278	4,297	3,559
				Lipps dist. <sup>44</sup> .....	10,388	10,653	9,921	Poquoson town <sup>45</sup> .....	4,278	...	...
WARREN COUNTY.....	14,655	14,801	11,352	Coeburn town <sup>44</sup> .....	2,471	760	764				
Cedarville dist.....	1,691	1,873	1,753	St. Paul town.....	1,156	1,014	746				
Fork dist.....	2,176	1,904	1,544								
Front Royal dist.....	9,437	9,501	6,670								
Front Royal town.....	7,949	8,115	3,831								
South River dist.....	1,351	1,523	1,385								

1 ACCOMACK.--Hallwood town incorporated from parts of Atlantic and Metompkin districts. Saxia town incorporated from part of Atlantic district. Melfa town incorporated from parts of Lee and Pungotague districts. Part of Lee district annexed to Onancock town. Onley town incorporated from part of Lee district. Bloxon town incorporated from part of Metompkin district. Keller and Painter towns incorporated from parts of Pungotague district.

2 ALLEGHANY.--Entire county redistricted since 1950. Parts of Covington, Falling Spring, and Jackson River districts annexed to Covington. Covington town in Covington, Falling Spring, and Jackson River districts incorporated as an independent city since 1950.

3 AUGUSTA.--Part of Beverly Manor district annexed to the independent city of Staunton. Craigville town incorporated from part of Pastures district. Part of South River district annexed to the independent city of Waynesboro.

4 BEDFORD.--Parts of Forest district annexed to the independent city of Lynchburg. Part of Liberty district annexed to Bedford town.

5 BOJETOURT.--Troutville town incorporated from part of Amsterdam district.

6 CAMPELL.--Part of Brookville district annexed to the independent city of Lynchburg.

7 CARROLL.--Galax town in Piper Gap and Sulphur Springs districts, Carroll County, and Old Town district, Grayson County, incorporated as an independent city since 1950. Part of Sulphur Springs district annexed to the independent city of Galax.

8 CHESTERFIELD.--Parts of Bermuda and Matocsa districts annexed to the independent city of Colonial Heights.

9 FAIRFAX.--County boundary between Fairfax and Loudoun Counties re-established since 1950. County partially redistricted since 1950. Parts of Falls Church and Mount Vernon districts annexed to the independent city of Alexandria. Parts of Providence district annexed to Vienna and Fairfax towns.

10 FAUQUIER.--Part of Centre district annexed to Warrenton town.

11 FRANKLIN.--Blue Ridge district organized from Brown Hill and Long Branch districts. Boone district organized from Little Creek and Bonbrook districts. Maggozee district annexed to Blackwater district. Boones Mill town changed from Boone Mill since 1950.

12 GILES.--Part of Narrows district annexed to Narrows town and part of Narrows town detached and area reverted to Narrows district. Part of Pearisburg district annexed to Pearisburg town.

13 GRAYSON.--Galax town in Old Town district, Grayson County, and Piper Gap and Sulphur Springs districts, Carroll County, incorporated as an independent city since 1950.

14 HALIFAX.--South Boston town in Benister district incorporated as an independent city since 1950.

15 HENRY.--Part of Martinsville district annexed to the independent city of Martinsville.

16 JAMES CITY.--Parts of Powhatan and Stonehouse districts annexed to New Kent County.

17 LANCASTER.--Irvington town and White Stone town incorporated from part of White Stone district.

18 LOUDOUN.--County boundary between Fairfax and Loudoun Counties re-established since 1950. Part of Leesburg district annexed to Leesburg town.

19 MADISON.--County partially redistricted since 1950.

20 MECKLENBURG.--Part of Chase City district annexed to Chase City town. Part of Clarksville district annexed to Clarksville town.

21 MONTGOMERY.--Part of Blacksburg district annexed to Blacksburg town and part of Blacksburg town detached and area reverted to Blacksburg district.

22 HANSEMOND.--Whaleyville town incorporated from part of Whaleyville district.

23 NEW KENT.--Part of James City County annexed to Weir Creek district.

24 NORFOLK.--Tanners Creek district annexed to the independent city of Norfolk. Part of Deep Creek district annexed to the independent city of Portsmouth and part of Portsmouth city detached and area annexed to Deep Creek district. Part of Washington district including Portlock town annexed to the independent city of South Norfolk. Part of Western Branch district annexed to the independent cities of South Norfolk and Portsmouth.

25 NORTHAMPTON.--Cheriton town incorporated from part of Capeville district. Part of Capeville district annexed to Cape Charles town. Nassawadox town incorporated from part of Franktown district.

26 ORANGE.--Gordonsville town returned in Madison district only in 1950.

27 PAGE.--Parts of Luray and Springfield districts annexed to Luray town. Part of Marksville district annexed to Stanley town.

28 PITTSYLVANIA.--Part of Chatham district annexed to Chatham town. Part of Pigg River district annexed to Staunton River district. Part of Tunstall district annexed to the independent city of Danville.

29 PRINCE EDWARD.--Part of Farmville district annexed to Farmville town.

30 PRINCE GEORGE.--Parts of Bland district annexed to the independent cities of Petersburg and Hopewell. Part of Rives district annexed to the independent city of Petersburg.

31 PRINCE WILLIAM.--Part of Manassas district annexed to Manassas town. Manassas Park town incorporated from part of Manassas district.

32 PRINCESS ANNE.--Bayside district organized from part of Kempsville district. Part of Kempsville district annexed to the independent city of Norfolk. Virginia Beach town in Lynnhaven district incorporated as an independent city since 1950.

33 PULASKI.--Part of Pulaski district annexed to Pulaski town.

34 ROANOKE.--Parts of Salem district annexed to Salem town.

35 ROCKBRIDGE.--Part of Lexington district annexed to Lexington town. Part of Natural Bridge district annexed to Glasgow town.

36 ROCKINGHAM.--Part of Central district annexed to the independent city of Harrisonburg. Part of Plains district annexed to Broadway town.

37 SCOTT.--Weber City town incorporated from part of Estillville district.

38 SMYTH.--Part of Marion district annexed to Marion town.

39 SOUTHAMPTON.--Parts of Franklin district annexed to Franklin town. Parts of Jerusalem district annexed to Courtland town.

40 SPOUTSYLVANIA.--Part of Courtland district annexed to the independent city of Fredericksburg.

41 STAFFORD.--Part of Hartwood district annexed to Falmouth district.

42 TAZEWELL.--Part of Clear Fork district annexed to Bluefield town. Part of Jeffersonville district annexed to Tazewell town.

43 WASHINGTON.--Part of Abingdon town detached and area reverted to Abingdon district. Part of Glade Spring district annexed to Glade Spring town. Meadow View town returned separately in 1950.

44 WISE.--Norton town in Gladeville district incorporated as an independent city since 1950. Parts of Gladeville district annexed to Wise town and to the independent city of Norton. Town of Bond Town and part of Lipps district annexed to Coeburn town.

45 YORK.--Bethel district organized from part of Poquoson district. Poquoson town incorporated from part of Poquoson district and made coextensive with the district.

Table 8.—POPULATION OF ALL INCORPORATED PLACES AND OF UNINCORPORATED PLACES OF 1,000 OR MORE: 1940 TO 1960

["U" denotes an unincorporated place. Asterisk (\*) denotes an incorporated place under 2,500 located in an urbanized area]

Place	County	1960	1950	1940	Place	County	1960	1950	1940
Abingdon.....	Washington.....	4,758	4,709	3,158	Fairlawn (U).....	Pulaski.....	1,325	...	...
Accomack.....	Accomack.....	414	500	...	Falls Church.....	Fairfax.....	10,192	7,535	2,576
Aecedale (U).....	Princess Anne.....	1,022	...	...	Falmouth (U).....	Stafford.....	1,478	1,176	...
Alberta.....	Brunswick.....	430	430	416	Farmville.....	Prince Edward.....	4,293	4,375	3,475
Alexandria.....	...	91,023	61,787	33,523	Fiedale (U).....	Henry.....	1,499	1,295	...
Altavista.....	Campbell.....	3,299	3,332	2,919	Fincaastle.....	Botetourt.....	403	405	442
Amherst.....	Amherst.....	1,200	1,038	930	Floyd.....	Floyd.....	487	493	479
Appalachia.....	Wise.....	2,456	2,915	3,010	Franklin.....	Southampton.....	7,264	4,670	3,466
Appomattox.....	Appomattox.....	1,184	1,094	992	Fredericksburg.....	Stafford.....	13,639	12,158	10,066
Arlington County <sup>1</sup> .....	Arlington.....	163,401	97,040	26,615	Fries.....	Grayson.....	1,039	1,442	1,555
Ashland.....	Hanover.....	2,773	2,610	1,718	Front Royal.....	Warren.....	7,949	8,115	3,831
Bassetts (U).....	Henry.....	3,148	3,421	...	Galax.....	...	5,254	5,248	3,195
Bay Colony-North Linkhorn Park (U).....	Princess Anne.....	1,151	...	...	Gate City.....	Scott.....	2,142	2,126	1,565
Bedford.....	Bedford.....	5,921	4,061	3,973	Glade Spring.....	Washington.....	1,407	827	686
Belle Haven.....	Accomack.....	371	453	277	Glasgow.....	Rockbridge.....	1,091	810	938
Berryville.....	Clarke.....	1,645	1,401	1,262	Glen Lyn.....	Giles.....	222	240	259
Big Stone Gap.....	Wise.....	4,688	5,173	4,331	Glenwood (U).....	Pittsylvania.....	1,857	1,913	...
Blacksburg.....	Montgomery.....	7,070	3,358	2,133	Gordonsville.....	Orange.....	1,109	1,118	508
Blackstone.....	Nottoway.....	3,659	3,536	2,699	Goshen.....	Rockbridge.....	99	124	187
Bloxom.....	Accomack.....	349	...	...	Gretna.....	Pittsylvania.....	900	803	619
Bluefield <sup>2</sup> .....	Tazewell.....	4,235	4,212	3,921	Grottoes.....	Augusta.....	969	908	759
Boones Mill.....	Franklin.....	371	335	377	Grundy.....	Rockingham.....	2,287	1,947	1,476
Bowling Green.....	Caroline.....	528	616	541	Halifax.....	Buchanan.....	2,287	1,947	1,476
Boyce.....	Clarke.....	384	372	342	Hallwood.....	Halifax.....	792	791	536
Boydton.....	Mecklenburg.....	449	501	424	Hampden.....	Accomack.....	269	...	...
Boykins.....	Southampton.....	710	811	699	Hampton.....	Loudoun.....	403	351	409
Branchville.....	Southampton.....	158	169	153	Hampton Macie (U).....	...	89,258	5,966	5,898
Bridgewater.....	Rockingham.....	1,815	1,537	993	Harmon (U).....	Buchanan.....	1,071	...	...
Bristol <sup>3</sup> .....	...	17,144	15,954	9,768	Harrodsburg.....	...	11,916	10,810	8,768
Broadway.....	Rockingham.....	646	561	506	Haymarket.....	Prince William.....	257	213	156
Brodnax.....	Brunswick.....	561	499	536	Haysi.....	Dickenson.....	485	476	623
Brookneal.....	Mecklenburg.....	1,070	883	736	Herndon.....	Fairfax.....	1,960	1,461	1,046
Buchanan.....	Botetourt.....	1,349	1,300	868	Hillsboro.....	Loudoun.....	124	129	115
Buckingham.....	Buckingham.....	218	264	190	Hillsville.....	Carroll.....	905	764	656
Buena Vista.....	Buena Vista.....	6,300	5,214	4,335	Holland.....	Nansemond.....	338	289	378
Burkeville.....	Nottoway.....	705	695	658	Hopewell.....	Russell.....	851	847	851
Cambria.....	Montgomery.....	722	853	810	Independence.....	...	17,895	10,219	8,679
Cape Charles.....	Northampton.....	2,041	2,427	2,299	Iron Gate.....	Grayson.....	679	486	429
Capron.....	Southampton.....	327	281	291	Ivory.....	Alleghany.....	716	725	719
Cedar Bluff.....	Tazewell.....	995	1,083	823	Jarratt.....	Lancaster.....	570	...	...
Charlotte Courthouse.....	Charlotte.....	555	397	399	Jericho (U).....	Southampton.....	398	377	339
Charlottesville.....	...	29,427	25,969	19,400	Jonesville.....	Greensville.....	608	574	458
Chase City.....	Mecklenburg.....	3,207	2,519	1,896	Keller.....	Sussex.....	2,300	...	...
Chatham.....	Pittsylvania.....	1,822	1,456	1,230	Kenbridge.....	Nansemond.....	711	597	588
Cheriton.....	Northampton.....	761	...	...	Keysville.....	Accomack.....	263	...	...
Chester (U).....	Chesterfield.....	1,290	1,168	...	Kilmarnock.....	Lunenburg.....	1,188	1,176	847
Chilhowie.....	Smyth.....	1,169	1,022	889	La Crosse.....	Charlotte.....	733	690	607
Chincoteague.....	Accomack.....	2,131	2,724	2,142	Lavrenceville.....	Lancaster.....	927	937	614
Christiansburg.....	Montgomery.....	3,653	2,967	2,299	Lebanon.....	Northumberland.....	726	675	524
Claremont.....	Surry.....	377	374	380	Leesburg.....	Mecklenburg.....	1,941	2,239	1,703
Clarkeville.....	Mecklenburg.....	1,530	1,035	826	Lexen (U).....	Brunswick.....	2,085	672	622
Cleveland.....	Russell.....	415	388	...	Lewis Gardens (U).....	Russell.....	2,869	1,703	1,698
Clifton.....	Fairfax.....	230	262	194	Lexington.....	Prince Anne.....	1,520	...	...
Clifton Forge.....	...	5,268	5,795	6,461	Lloyd Place (U).....	Henrico.....	1,380	...	...
Clinchport.....	Scott.....	302	399	346	Londonbridge (U).....	Rockbridge.....	7,537	5,976	3,914
Clintwood.....	Dickenson.....	1,400	1,366	1,106	Louis.....	Nansemond.....	2,282	...	...
Clover.....	Halifax.....	261	274	252	Lovettsville.....	Prince Anne.....	1,061	...	...
Coeburn.....	Wise.....	2,471	760	764	Lynchburg.....	Louis.....	576	344	365
Collinsville (U).....	Henry.....	3,586	...	...	Madison.....	Loudoun.....	217	341	248
Colonial Beach.....	Westmoreland.....	1,769	1,464	1,105	Manassas.....	Page.....	3,014	2,731	1,511
Colonial Heights.....	...	9,587	6,077	3,194	Manassas Park.....	...	54,790	47,727	44,541
Columbia.....	Flovanna.....	86	119	144	Marion.....	Highland.....	127	107	110
Courtland.....	Southampton.....	855	443	459	Martinsville.....	Dinwiddie.....	519	476	453
Covington.....	...	11,062	5,860	6,300	Melba.....	Madison.....	450	308	281
Craigsville.....	Augusta.....	978	...	...	Middleton.....	Prince William.....	3,555	1,804	1,302
Crewe.....	Nottoway.....	2,012	2,030	2,048	Mineral.....	Prince William.....	5,342	...	...
Culpeper.....	Culpeper.....	2,412	2,527	2,316	Monterey.....	Smyth.....	8,385	6,982	5,177
Damascus.....	Washington.....	1,485	1,726	1,441	Montross.....	Martin.....	18,798	17,251	10,080
Dante (U).....	Russell.....	1,436	2,405	...	Mount Crawford.....	Accomack.....	409	...	...
Danville.....	...	46,577	35,066	32,749	Mount Jackson.....	Loudoun.....	761	663	629
Dayton.....	Rockingham.....	930	788	632	Mt. Vernon.....	Frederick.....	378	386	361
Dendron.....	Surry.....	403	476	465	Narrrows.....	Louis.....	366	414	427
Dillwyn.....	Buckingham.....	515	556	436	Nassawadox.....	Highland.....	270	262	309
Drakes Branch.....	Charlotte.....	759	410	438	Newcastle.....	Westmoreland.....	394	331	301
Draper.....	Pulaski.....	233	258	241	New Market.....	Rockingham.....	247	303	290
Dublin.....	Pulaski.....	1,427	1,313	576	Newport News.....	Shenandoah.....	722	732	562
Duffield.....	Scott.....	97	176	83	Newsoms.....	Giles.....	2,508	2,520	1,489
Dumfries (U).....	Prince William.....	1,368	...	...	Nickelsville.....	Northampton.....	650	...	...
Dungannon.....	Scott.....	444	431	333	Norfolk.....	Craig.....	200	239	253
Eastville.....	Northampton.....	261	311	316	North Pulaski (U).....	Shenandoah.....	783	701	629
Edinburg.....	Shenandoah.....	517	533	565	North Tazewell.....	...	113,662	42,358	37,067
Elkton.....	Rockingham.....	1,506	1,361	1,050	...	Southampton.....	423	392	...
Emporia.....	Greensville.....	5,535	5,664	2,735	...	Scott.....	291	268	256
Etrrick (U).....	Chesterfield.....	2,998	3,030	...	...	...	305,872	213,513	144,332
Exmore.....	Northampton.....	1,566	1,362	...	...	Pulaski.....	1,156	1,557	...
Fairfax.....	Fairfax.....	13,585	1,946	979	...	Tazewell.....	713	816	688

<sup>1</sup> Urban under special rule.

<sup>2</sup> Population of Bluefield city, Mercer County, W. Va.: 19,256 in 1960, 21,506 in 1950, and 20,641 in 1940.

<sup>3</sup> Population of Bristol city, Sullivan County, Tenn.: 17,582 in 1960, 16,711 in 1950, and 14,004 in 1940.

<sup>4</sup> The revised population total for Madison is 301. The figure in the table includes population for an area misclassified as inside, rather than outside, the city limits. This error was discovered too late for correction in the detailed distributions.

<sup>5</sup> The revised population total for Norfolk is 204,869. The figure in the table includes population for an area misclassified as inside, rather than outside, the city limits. This error was discovered too late for correction in the detailed distributions.

Table 8.—POPULATION OF ALL INCORPORATED PLACES AND OF UNINCORPORATED PLACES OF 1,000 OR MORE: 1940 TO 1960—Con.

["U" denotes an unincorporated place. Asterisk (\*) denotes an incorporated place under 2,500 located in an urbanized area]

Place	County	1960	1950	1940	Place	County	1960	1950	1940
North Virginia Beach (U).....	Princess Anne.....	2,587	1,593	...	Smithfield.....	Isle of Wight.....	917	1,180	1,178
Norton.....	4,996	4,315	4,006	Smithfield.....	Isle of Wight.....	917	1,180	1,178	
Ocoquan.....	Prince William.....	301	317	213	South Boston.....	Mecklenburg.....	2,569	2,153	1,739
Oceana (U).....	Princess Anne.....	2,448	...	...	South Hill.....	Mecklenburg.....	22,035	10,434	8,038
Onancock.....	Accomack.....	1,759	1,353	1,283	South Norfolk.....	Fairfax.....	10,783	...	...
Onley.....	Accomack.....	415	...	...	Springfield (U).....	Fairfax.....	10,783	...	...
Orange.....	Orange.....	2,955	2,571	1,980	Stanardsville.....	Greene.....	283	182	212
Painter.....	Accomack.....	349	...	...	Stanley.....	Page.....	1,039	399	317
Pamplin City.....	Appomattox.....	312	370	273	Staunton.....	Frederick.....	22,232	19,927	13,337
Parkesley.....	Prince Edward.....	850	883	701	Stony Creek.....	Sussex.....	437	482	493
Pearisburg.....	Giles.....	2,268	2,005	987	Strasburg.....	Shenandoah.....	2,428	2,022	1,968
Pembroke.....	Giles.....	1,038	1,010	...	Stuart.....	Patrick.....	974	849	720
Pennington Gap.....	Lee.....	1,799	2,090	1,990	Suffolk.....	Suffolk.....	12,609	12,339	11,343
Petersburg.....	36,750	35,054	30,631	Surry.....	Surry.....	288	248	254	
Phenix.....	Charlotte.....	259	290	340	Tangier.....	Accomack.....	876	915	1,020
Pleasant Hill (U).....	Nansemond.....	2,626	...	...	Tappahannock.....	Essex.....	1,086	1,011	783
Poahontas.....	Tazewell.....	1,313	2,410	2,623	Tazewell.....	Tazewell.....	3,000	1,347	1,374
Poquoson.....	York.....	4,278	...	...	The Plains.....	Fauquier.....	484	405	372
Port Royal.....	Caroline.....	128	139	123	Timberville.....	Rockingham.....	412	271	253
Portsmouth.....	114,773	80,039	50,745	Toms Brook.....	Shenandoah.....	244	256	219	
Pound.....	Wise.....	1,135	1,193	...	Triangle (U).....	Prince William.....	2,948	...	...
Pulaski.....	Pulaski.....	10,469	9,202	8,792	Troutdale.....	Grayson.....	273	250	334
Purcellville.....	Loudoun.....	1,419	945	787	Troutville.....	Botetourt.....	524	...	...
Quantico.....	Prince William.....	1,015	1,240	1,139	Urbanna.....	Middlesex.....	512	505	482
Radford.....	9,371	9,026	6,990	Victoria.....	Lunenburg.....	1,737	1,607	1,555	
Remington.....	Fauquier.....	288	309	226	Vienna.....	Fairfax.....	11,440	2,029	1,237
Rich Creek.....	Giles.....	748	740	...	Vinton.....	Roanoke.....	3,432	3,629	3,455
Richlands.....	Tazewell.....	4,963	4,648	2,203	Virginia Beach.....	Halifax.....	286	323	358
Richmond.....	219,958	230,310	193,042	Wachapreague.....	Accomack.....	507	551	548	
Ridgeway.....	Henry.....	524	440	422	Wakefield.....	Sussex.....	1,015	949	687
Roanoke.....	97,110	91,921	69,287	Warrenton.....	Fauquier.....	3,522	1,797	1,651	
Rocky Mount.....	Franklin.....	1,412	1,432	1,366	Warsaw.....	Richmond.....	549	435	...
Round Hill.....	Loudoun.....	430	403	337	Washington.....	Rappahannock.....	255	249	245
Rural Retreat.....	Wythe.....	413	478	440	Waverly.....	Sussex.....	1,601	1,502	1,288
St. Charles.....	Lee.....	368	550	482	Waynesboro.....	15,694	12,357	7,373	
St. Paul.....	Wise.....	1,156	1,014	746	Weber City.....	Scott.....	1,274	...	...
Salem.....	Roanoke.....	16,058	6,823	5,737	West Point.....	King William.....	1,678	1,919	1,947
Saltville.....	Smyth.....	2,844	2,678	2,650	Whaleyville.....	Nansemond.....	402	...	...
Saratoga Place (U).....	Washington.....	1,478	1,314	...	White Stone.....	Lancaster.....	395	...	...
Saxis.....	Nansemond.....	577	...	...	Williamsburg.....	6,832	6,735	3,942	
Scottsburg.....	Halifax.....	188	222	239	Winchester.....	15,110	13,841	12,095	
Scottsville.....	Albermarle.....	353	396	368	Windsor.....	Ile of Wight.....	579	451	411
Seatack (U).....	Fluvanna.....	...	...	...	Wise.....	Wise.....	2,614	1,574	1,226
Shenandoah.....	Princess Anne.....	3,120	...	...	Woodstock.....	Shenandoah.....	2,083	1,816	1,546
Singers Glen.....	Page.....	1,839	1,903	1,829	Wytheville.....	Wythe.....	5,634	5,513	4,653
	Rockingham.....	102	126	120	Yorktown.....	York.....	311	384	521

The revised population total for Norton is 5,013. The figure in the table excludes population for an area misclassified as outside, rather than inside, the city limits. This error was discovered too late for correction in the detailed distributions.

Table 9.—1960 POPULATION OF AREAS ANNEXED BETWEEN 1950 AND 1960 BY INCORPORATED PLACES HAVING 2,500 INHABITANTS OR MORE IN 1950

[Minus sign (-) denotes decrease]

Incorporated place	1960 population			1950 population total	Increase, 1950 to 1960, in 1950 area	Incorporated place	1960 population			1950 population total	Increase, 1950 to 1960, in 1950 area
	Total	In 1950 area	In annexed area				Total	In 1950 area	In annexed area		
Alexandria.....	91,023	70,864	20,159	61,787	9,077	Luray.....	3,014	2,800	214	2,731	69
Bedford.....	5,921	4,538	1,383	4,061	477	Lynchburg.....	54,790	47,436	7,354	47,727	-291
Blacksburg.....	7,070	3,199	3,871	3,358	-159	Marion.....	8,385	7,578	807	6,982	596
Bluefield.....	4,235	3,835	400	4,212	-377	Martinsville.....	18,798	18,560	238	17,251	1,309
Chase city.....	3,207	2,537	670	2,519	18	Narrows.....	2,508	2,205	303	2,520	-315
Colonial Heights.....	9,587	9,074	513	6,077	2,997	Newport News.....	113,662	42,233	71,429	42,358	-125
Covington.....	11,062	4,846	6,216	5,860	-1,014	Norfolk.....	4305,872	217,551	88,321	213,513	4,038
Danville.....	46,577	33,095	13,482	35,066	-1,971	Norton.....	4,996	4,048	948	4,315	-267
Farmville.....	4,293	4,046	247	4,375	-329	Petersburg.....	36,230	35,469	1,281	35,054	415
Franklin.....	7,264	4,930	2,334	4,670	260	Portsmouth.....	114,773	78,054	36,719	80,039	-1,985
Fredericksburg.....	13,639	11,425	2,214	12,158	-733	Pulaski.....	10,469	8,042	2,427	9,202	-1,160
Galax.....	5,254	5,242	12	5,248	-6	Salem.....	16,058	7,600	8,458	6,823	777
Hampton.....	89,258	7,294	81,964	5,966	1,328	South Norfolk.....	22,035	9,655	12,380	10,434	-779
Harrisonburg.....	11,916	11,540	376	10,810	730	Staunton.....	22,232	22,039	193	19,927	2,112
Hopewell.....	17,895	9,257	8,638	10,219	-962	Waynesboro.....	15,694	15,367	327	12,357	3,010
Lexington.....	7,537	5,924	1,613	5,976	-52						

The revised population total for Norfolk is 304,869. The figure in the table includes population for an area misclassified as inside, rather than outside, the city limits. This error was discovered too late for correction in the detailed distributions. The error occurred in the area that constituted the city in 1950.

The revised population total for Norton is 5,013. The figure in the table excludes population for an area misclassified as outside, rather than inside, the city limits. This error was discovered too late for correction in the detailed distributions. The error occurred in the area that constituted the city in 1950.

Table 10.—POPULATION OF URBANIZED AREAS: 1960 AND 1950

Area	1960	1950	Area	1960	1950
<b>LYNCHBURG (VA.) URBANIZED AREA</b>			<b>RICHMOND (VA.) URBANIZED AREA</b>		
The area.....	59,319	( <sup>1</sup> )	The area.....	333,438	257,995
Lynchburg city.....	54,790	...	Richmond city.....	219,958	230,310
Outside central city.....	4,529	...	Outside central city.....	113,480	27,685
The area includes the following minor civil divisions and parts of minor civil divisions:			The area includes the following minor civil divisions and parts of minor civil divisions:		
Lynchburg city.....	54,790	...	Richmond city.....	219,958	230,310
Amherst County (part).....	2,146	...	Chesterfield County (part).....	30,142	5,560
Elion district (part).....	2,146	...	Bermuda district (part).....	2,328	( <sup>4</sup> )
Campbell County (part).....	2,383	...	Manchester district (part).....	24,839	5,560
Brookville district (part).....	2,383	...	Midlothian district (part).....	2,975	( <sup>4</sup> )
			Henrico County (part).....	83,338	22,125
			Brookland district (part).....	28,086	10,534
			Fairfield district (part).....	20,766	4,741
			Tuckahoe district (part).....	33,512	6,158
			Varina district (part).....	974	692
<b>NEWPORT NEWS-HAMPTON (VA.) URBANIZED AREA</b>			<b>ROANOKE (VA.) URBANIZED AREA</b>		
The area.....	208,874	( <sup>1</sup> )	The area.....	124,752	106,682
In central cities.....	202,920	...	Roanoke city.....	97,110	91,921
Newport News.....	113,662	...	Outside central city.....	27,642	14,761
Hampton.....	89,258	...			
Outside central cities.....	5,954	...	The area includes the following minor civil divisions and parts of minor civil divisions:		
The area includes the following minor civil divisions and parts of minor civil divisions:			Roanoke city.....	97,110	91,921
Newport News city.....	113,662	...	Roanoke County (part).....	27,642	14,761
Hampton city.....	89,258	...	Big Lick district (part).....	4,669	3,988
York County.....	5,954	...	Vinton town.....	3,432	3,629
Bethel district (part).....	1,047	...	Cave Spring district (part).....	3,012	( <sup>4</sup> )
Nelson district (part).....	629	...	Salem district (part).....	19,961	10,773
Poquoson district.....	4,278	...	Salem town.....	16,058	6,823
Poquoson town.....	4,278	...			
<b>NORFOLK-PORTSMOUTH (VA.) URBANIZED AREA</b>			<b>WASHINGTON (D.C.-MD.-VA.) URBANIZED AREA<sup>5</sup></b>		
The area.....	507,825	385,111	That part of the area in Virginia.....	465,487	231,732
In central cities.....	420,645	293,552	The area includes the following minor civil divisions and parts of minor civil divisions:		
Norfolk.....	4305,872	213,513	Alexandria city.....	91,023	61,787
Portsmouth.....	114,773	80,039	Falls Church city.....	10,192	7,535
Outside central cities.....	87,180	91,559	Arlington County.....	163,401	135,449
The area includes the following minor civil divisions and parts of minor civil divisions:			Fairfax County (part).....	200,871	26,961
Norfolk city.....	305,872	213,513	Dranesville district (part).....	25,827	( <sup>4</sup> )
Portsmouth city.....	114,773	80,039	Falls Church district (part).....	34,499	14,511
South Norfolk city.....	22,035	10,434	Lee district (part).....	31,802	( <sup>4</sup> )
South Norfolk County (part).....	28,135	276,622	Mason district (part).....	49,081	( <sup>6</sup> )
Deep Creek district (part).....	7,377	16,797	Springfield (U).....	10,783	...
Washington district (part).....	15,034	12,471	Mount Vernon district (part).....	40,076	11,469
Western Branch district (part).....	5,724	8,809	Providence district (part).....	19,586	981
Princess Anne County (part).....	37,010	4,503	Vienna town.....	11,440	( <sup>4</sup> )
Bayside district (part).....	26,433	( <sup>3</sup> )			
Kempville district (part).....	7,791	( <sup>3</sup> )			
Lynnhaven district (part).....	2,786	( <sup>4</sup> )			

<sup>1</sup> There were no urbanized areas delineated for Lynchburg or Newport News-Hampton for the 1950 Census.

<sup>2</sup> Includes population (38,545) of part of Tanners Creek district; district annexed to Norfolk city since 1950.

<sup>3</sup> Bayside district organized from Kempville district since 1950.

<sup>4</sup> Not in area in 1950.

<sup>5</sup> For the map and population of the entire Washington (D.C.-Md.-Va.) Urbanized Area, see the corresponding report for the District of Columbia.

<sup>6</sup> Mason district organized since the 1950 Census.

<sup>Δ</sup>The revised population total for Norfolk city is 304,869. The figure in the table includes population for an area misclassified as inside, rather than outside, the city limits. This error was discovered too late for correction in the detailed distributions.

Table 11.—POPULATION OF STANDARD METROPOLITAN STATISTICAL AREAS: 1960 AND 1950

[Data relate to areas as defined for 1960. Minus sign (-) denotes decrease]

Standard metropolitan statistical area, central city, and other component areas	1960	1950	Increase		Standard metropolitan statistical area, central city, and other component areas	1960	1950	Increase	
			Number	Percent				Number	Percent
<b>LYNCHBURG, VA.</b>					<b>RICHMOND, VA.</b>				
Total.....	110,701	96,936	13,765	14.2	Total.....	408,494	328,050	80,444	24.5
Lynchburg city.....	54,790	47,727	7,063	14.8	Richmond city.....	219,958	230,310	-10,352	-4.5
Outside central city.....	55,911	49,209	6,702	13.6	Outside central city.....	188,536	97,740	90,796	92.9
Lynchburg city.....	54,790	47,727	7,063	14.8	Richmond city.....	219,958	230,310	-10,352	-4.5
Amherst County.....	22,953	20,332	2,621	12.9	Chesterfield County.....	71,197	40,400	30,797	76.2
Campbell County.....	32,958	28,877	4,081	14.1	Henrico County.....	117,339	57,340	59,999	104.6
<b>NEWPORT NEWS-HAMPTON, VA.</b>					<b>ROANOKE, VA.</b>				
Total.....	224,503	<sup>1</sup> 154,977	69,526	44.9	Total.....	158,803	133,407	25,396	19.0
In central cities.....	202,920	48,324	154,596	319.9	Roanoke city.....	97,110	91,921	5,189	5.6
Newport News.....	113,662	42,358	71,304	168.3	Outside central city.....	61,693	41,486	20,207	48.7
Hampton.....	89,258	5,966	83,292	1,396.1	Roanoke city.....	97,110	91,921	5,189	5.6
Outside central cities.....	21,583	<sup>1</sup> 106,653	-85,070	-79.8	Roanoke County.....	61,693	41,486	20,207	48.7
Newport News city.....	113,662	42,358	71,304	168.3	<b>WASHINGTON, D.C.-MD.-VA.</b>				
Hampton city.....	89,258	5,966	83,292	1,396.1	That part of the area in Virginia.....				
York County.....	21,583	11,750	9,833	83.7	Alexandria city.....	91,023	61,787	29,236	47.3
<b>NORFOLK-PORSMOUTH, VA.</b>					Falls Church city.....				
Total.....	578,507	446,200	132,307	30.0	Arlington County.....	163,401	135,449	27,952	20.6
In central cities.....	420,645	293,552	127,093	43.3	Fairfax County.....	275,002	98,557	176,445	179.0
Norfolk.....	<sup>2</sup> 305,872	213,513	92,359	43.3	<b>WASHINGTON, D.C.-MD.-VA.</b>				
Portsmouth.....	114,773	80,039	34,734	43.4	That part of the area in Virginia.....				
Outside central cities.....	157,862	152,648	5,214	3.4	Alexandria city.....	91,023	61,787	29,236	47.3
Norfolk city.....	305,872	213,513	92,359	43.3	Falls Church city.....	10,192	7,535	2,657	35.3
South Norfolk city.....	22,035	10,434	11,601	111.2	Arlington County.....	163,401	135,449	27,952	20.6
Portsmouth city.....	114,773	80,039	34,734	43.4	Fairfax County.....	275,002	98,557	176,445	179.0
Virginia Beach city.....	8,091	5,390	2,701	50.1	<b>WASHINGTON, D.C.-MD.-VA.</b>				
Norfolk County.....	51,612	99,927	-48,315	-48.4	That part of the area in Virginia.....				
Princess Anne County.....	76,124	<sup>3</sup> 42,277	33,847	80.1	Alexandria city.....	91,023	61,787	29,236	47.3

<sup>1</sup> Includes population of Warwick County (39,875) and Elizabeth City County (55,028) which were consolidated with Newport News city and Hampton city, respectively, since 1950.

<sup>2</sup> Includes population of Virginia Beach city which became an independent city, January 1, 1952.

<sup>3</sup> The revised population total for Norfolk is 304,869. The figure in the table includes population for an area misclassified as inside, rather than outside, the city limits. This error was discovered too late for correction in the detailed distributions.

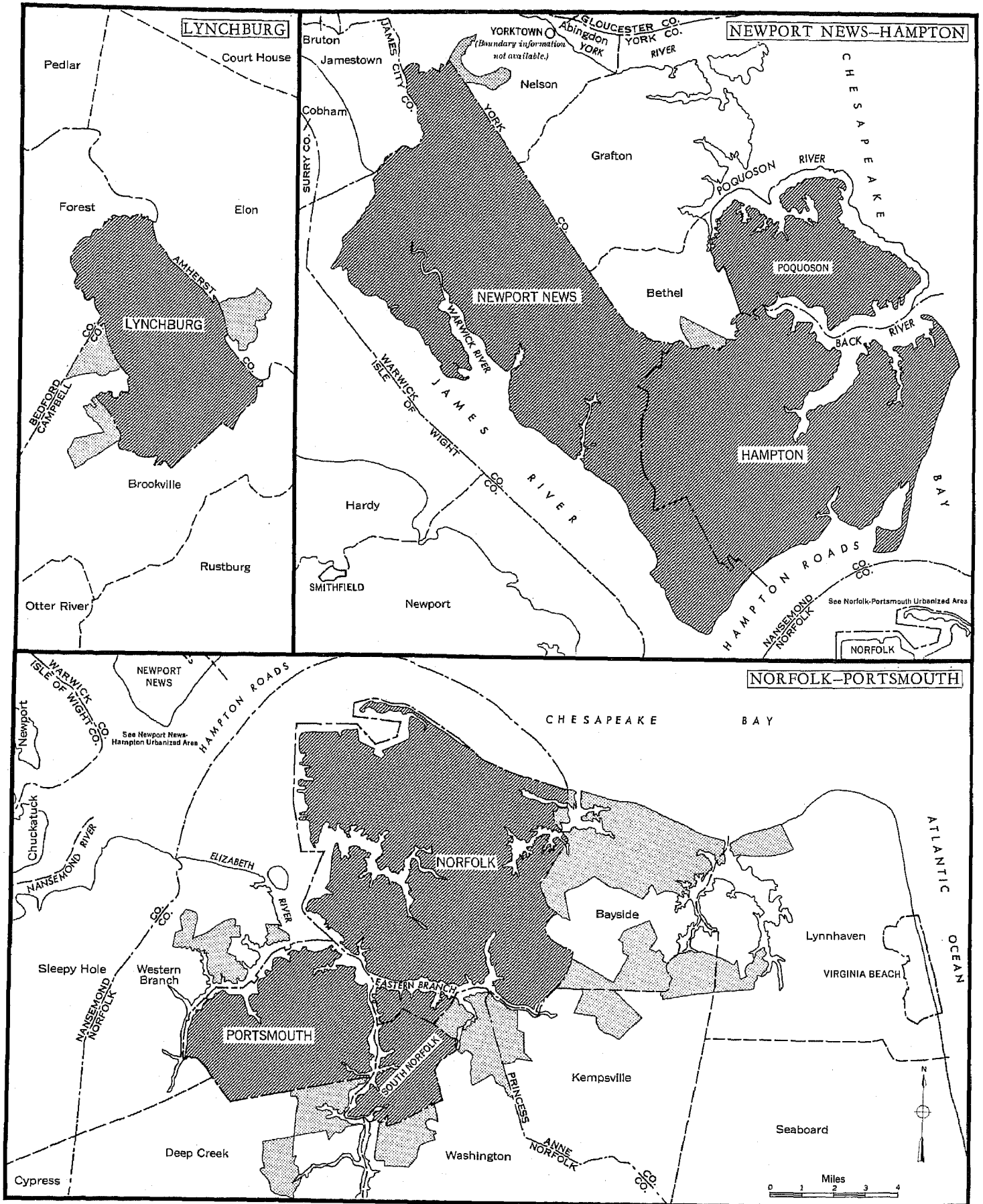
Table 12.—POPULATION OF THE STATE AND OF STANDARD METROPOLITAN STATISTICAL AREAS, BY TYPE OF RESIDENCE: 1960

Metropolitan-nonmetropolitan residence	Total	Urban			Rural		
		Total	Central city or cities	Other urban territory	Total	Places of 1,000 to 2,500	Other rural territory
The State.....	3,966,949	2,204,913	995,423	1,209,490	1,762,036	108,925	1,653,111
In standard metropolitan statistical areas.....	2,020,626	1,733,375	995,423	737,952	287,251	14,102	273,149
Lynchburg, Va.....	110,701	62,618	54,790	7,828	48,083	2,270	45,813
Newport News-Hampton, Va.....	224,503	208,874	202,920	5,954	15,629	...	15,629
Norfolk-Portsmouth, Va.....	578,507	521,623	420,645	100,978	56,884	7,202	49,682
Richmond, Va.....	408,494	336,436	219,958	116,478	72,058	2,670	69,388
Roanoke, Va.....	158,803	124,752	97,110	27,642	34,051	...	34,051
Washington, D.C.-Md.-Va.....	539,618	479,072	...	479,072	60,546	1,960	58,586
Not in standard metropolitan statistical areas.....	1,946,323	471,538	...	471,538	1,474,785	94,823	1,379,962

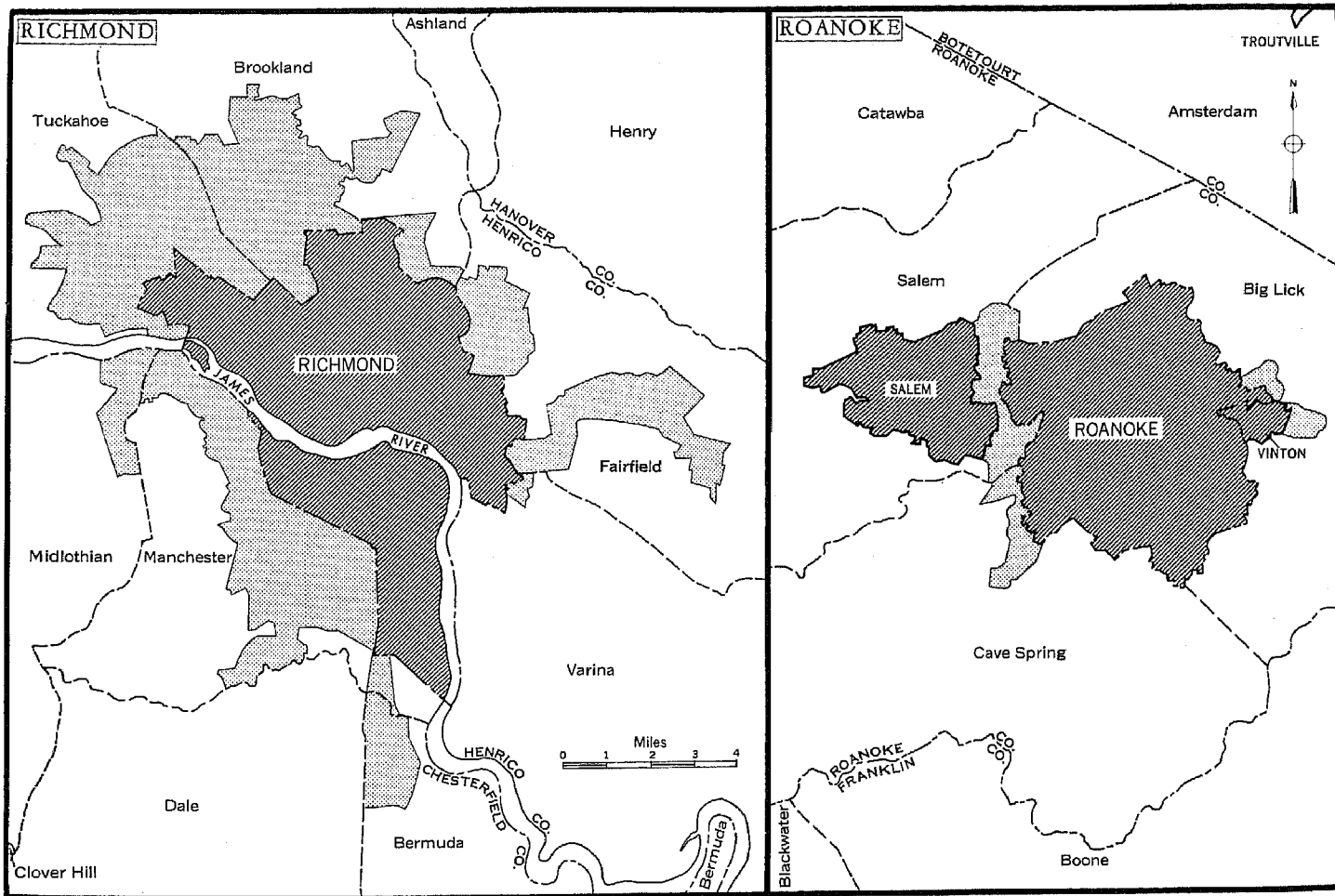
<sup>1</sup> Part in State only; for entire area, see table 11 of the corresponding report for the District of Columbia or table 31 of the U.S. Summary.

<sup>2</sup> Includes population of Norfolk as 305,872; the revised population total is 304,869. The figure used in the table includes population of an area misclassified as inside, rather than outside, the city limits. This error was discovered too late for correction in the detailed distributions.



URBANIZED AREAS—VIRGINIA



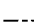
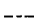

# URBANIZED AREAS—VIRGINIA



**COMPONENTS OF URBANIZED AREA**

-  Incorporated Places
-  Unincorporated Area

**BOUNDARY SYMBOLS**

-  State Line
-  County Line
-  Minor Civil Division Line

Maps showing boundaries in detail are available at cost on request to the Bureau of the Census.