

Number of Inhabitants

A



NUMBER OF INHABITANTS

Maryland

LIST OF TABLES

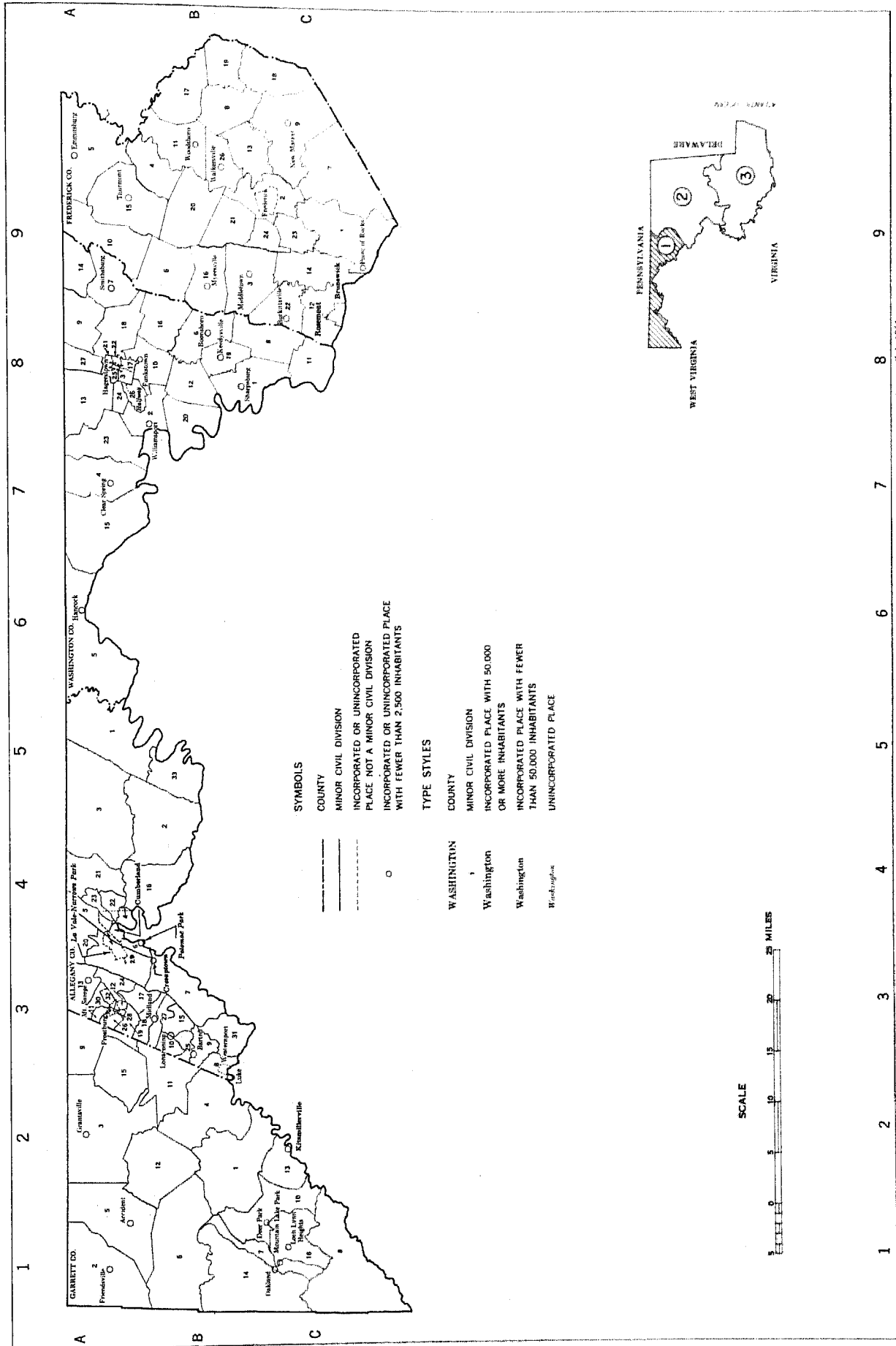
[Page numbers listed here omit the State prefix number which appears as part of the page number for each page. The prefix for this State is 22]

Table	Page
1.—Population of the State, urban and rural: 1790 to 1960.....	6
2.—Population in groups of places according to size: 1960 and 1950.....	6
3.—Population in groups of places according to size: 1900 to 1960.....	7
4.—Population in incorporated and unincorporated places according to size: 1960.....	8
5.—Population of incorporated places of 10,000 or more from earliest census to 1960.....	8
6.—Area and population of counties, urban and rural: 1960 and 1950.....	9
7.—Population of counties, by minor civil divisions: 1940 to 1960.....	9
8.—Population of all incorporated places and of unincorporated places of 1,000 or more: 1940 to 1960.....	12
9.—1960 population of areas annexed between 1950 and 1960 by incorporated places having 2,500 inhabitants or more in 1950.....	13
10.—Population of urbanized areas: 1960 and 1950.....	14
11.—Population of standard metropolitan statistical areas: 1960 and 1950.....	15
12.—Population of the State and of standard metropolitan statistical areas, by type of residence: 1960.....	15

LIST OF MAPS

The State, showing counties, places of 25,000 or more, and standard metropolitan statistical areas.....	2
The State, showing minor civil divisions.....	3
Urbanized areas (separate map for each area).....	16

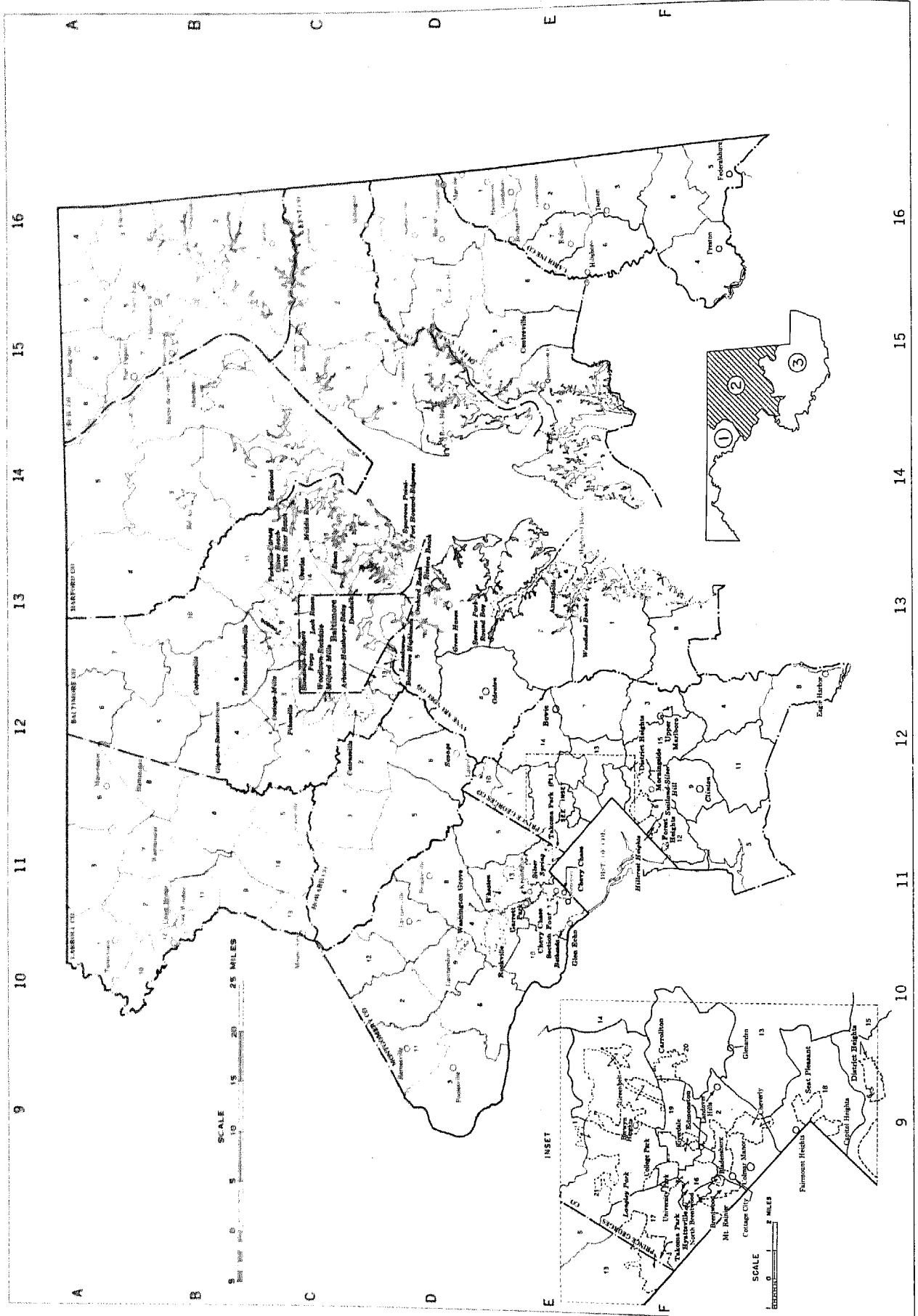
MARYLAND—SECTION 1 MINOR CIVIL DIVISIONS—ELECTION DISTRICTS



Large-scale copies of this map may be purchased from Superintendent of Documents, U. S. Government Printing Office, Washington 25, D. C., after April 1, 1961.

MARYLAND—SECTIONS 2 AND 3

MINOR CIVIL DIVISIONS—ELECTION DISTRICTS



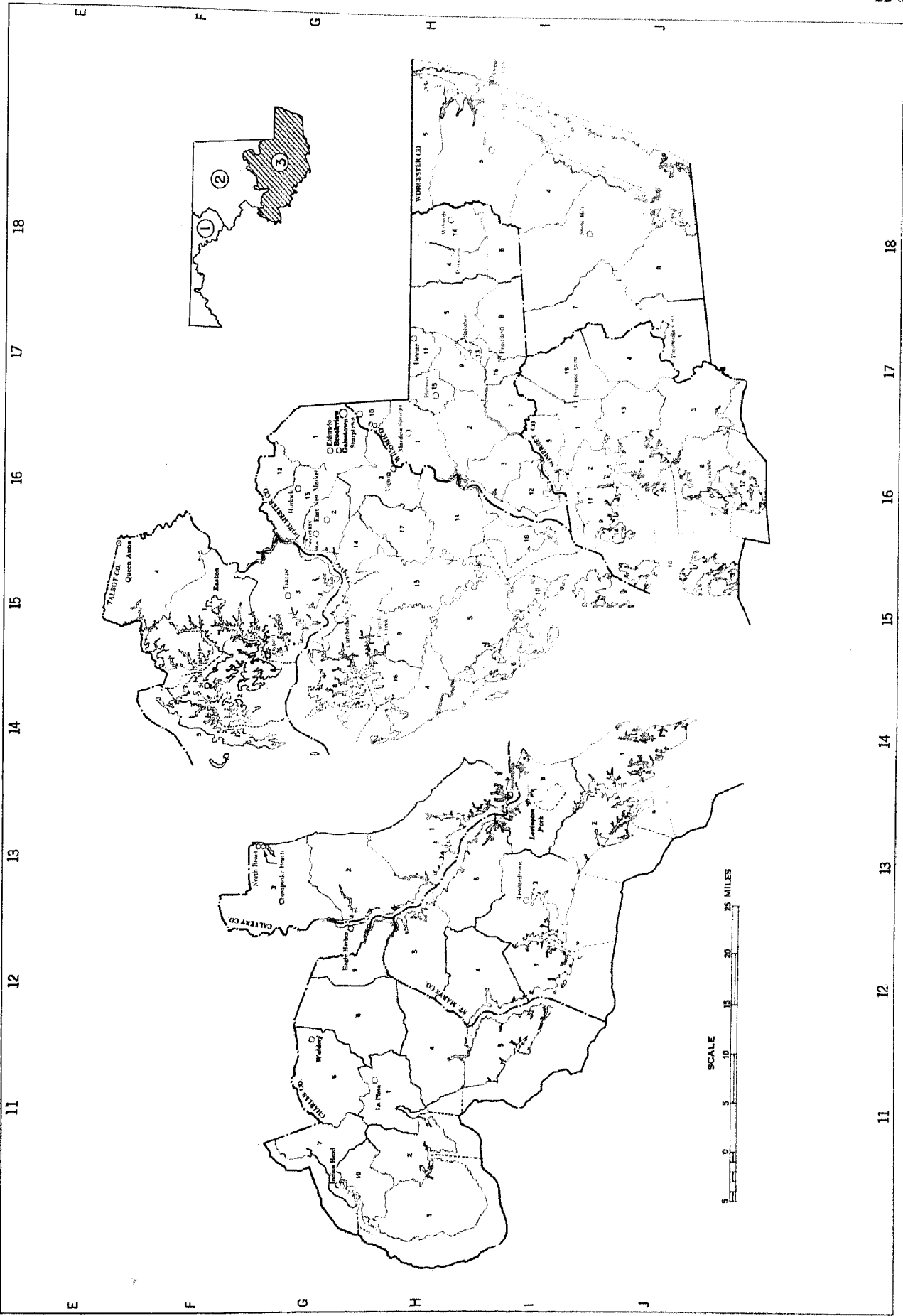


Table 1.—POPULATION OF THE STATE, URBAN AND RURAL: 1790 TO 1960

[For description of current and previous urban definitions, see text. Minus sign (-) denotes decrease]

Census date	The State				Urban territory			Rural territory			Percent of total	
	Population	Increase over pre- ceding census		Number of urban places	Population	Increase over pre- ceding census		Population	Increase over pre- ceding census		Urban	Rural
		Number	Percent			Number	Percent		Number	Percent		
Current urban definition												
1960 (Apr 1)	2,343,001	797,608	32.3	68	2,253,832	637,930	39.5	846,857	119,758	16.5	72.7	27.3
1950 (Apr 1)	2,343,001	521,797	28.6	33	2,161,502	727,099	69.0	31.0
Previous urban definition												
1960 (Apr 1)	3,100,689	797,608	32.3	45	1,742,158	316,431	22.2	1,358,551	441,257	48.1	56.2	43.8
1950 (Apr 1)	2,343,001	521,797	28.6	297	2,142,577	345,356	32.0	2,017,294	176,401	23.8	60.8	39.2
1940 (Apr 1)	1,821,244	189,718	11.6	24	1,680,351	105,482	10.8	1,400,893	84,236	12.8	59.3	40.7
1930 (Apr 1)	1,521,526	181,865	12.5	21	1,474,869	105,447	12.1	1,366,557	76,418	13.2	59.8	40.2
1920 (Jan 1)	1,449,661	134,315	11.9	18	1,409,422	211,230	32.1	1,198,239	-56,915	-8.9	60.0	40.0
1910 (Apr 15)	1,295,346	107,302	9.0	15	1,268,192	66,986	11.3	1,197,154	40,316	6.8	50.8	49.2
1900 (June 1)	1,188,044	145,656	14.0	14	1,091,206	95,504	19.3	1,001,898	50,150	9.2	49.8	50.2
1890 (June 1)	1,062,390	107,467	11.5	12	1,005,702	119,859	31.9	885,888	-12,412	-2.2	47.6	52.4
1880 (June 1)	934,943	154,049	19.7	9	773,843	80,364	27.2	759,100	73,665	15.2	40.2	59.8
1870 (June 1)	780,894	93,845	13.7	5	695,459	62,159	26.6	633,435	31,686	7.0	37.8	62.2
1860 (June 1)	687,049	104,025	27.8	5	613,300	45,255	24.1	563,749	58,760	14.9	34.0	66.0
1850 (June 1)	583,534	113,519	24.0	5	518,045	74,133	65.1	443,989	38,882	10.9	32.3	67.7
1840 (June 1)	476,019	28,979	9.1	4	413,912	22,871	25.1	356,107	108	...	24.2	75.8
1830 (June 1)	447,340	39,690	9.7	4	410,041	24,663	37.2	355,999	15,027	4.4	20.4	79.6
1820 (June 1)	407,350	26,804	7.0	2	380,546	19,823	42.6	340,972	6,981	2.1	16.3	83.7
1810 (Aug 7)	380,566	38,998	11.4	1	341,568	20,041	75.6	333,991	18,997	6.0	12.2	87.8
1800 (Aug 4)	341,948	21,820	6.8	1	320,128	13,011	96.4	315,034	8,809	2.9	7.8	92.2
1790 (Aug 2)	319,728	1	13,503	306,225	4.2	95.8

1 Includes 348,533 persons in urban territory outside urban places.
 2 Includes 792,686 persons in urban territory outside urban places.
 3 Revised since publication of 1950 reports.
 4 Includes population of present area of the District of Columbia.

Table 2.—POPULATION IN GROUPS OF PLACES ACCORDING TO SIZE: 1960 AND 1950

[Percent not shown where less than 0.1]

Type of area and size of place	1960				1950			
	Number of places	Population	Percent of total population	Percent of total	Number of places	Population	Percent of total population	Percent of total
The State	...	2,343,001	100.0	2,343,001	100.0	...
URBAN								
Total	(2)	2,253,832	72.7	100.0	(2)	1,615,902	69.0	100.0
Within urbanized areas								
Central cities, total	1	1,997,928	64.4	88.6	1	1,415,275	60.4	87.6
Cities of 1,000,000 or more	...	939,024	30.3	41.7	1	949,708	40.5	58.8
Cities of 500,000 to 1,000,000	1	939,024	30.3	41.7	1	949,708	40.5	58.8
Cities of 250,000 to 500,000
Cities of 100,000 to 250,000
Cities of 50,000 to 100,000
Cities under 50,000
Urban fringes, total	37	1,058,904	34.2	47.0	...	465,567	19.9	28.8
Places of 2,500 or more	37	710,371	22.9	31.5	10	72,881	3.1	4.5
Places of 100,000 or more
Places of 50,000 to 100,000	4	259,928	8.4	11.5
Places of 25,000 to 50,000	4	123,903	4.1	5.6
Places of 10,000 to 25,000	17	264,794	8.5	11.7	4	47,808	2.0	3.0
Places of 5,000 to 10,000	9	38,448	1.1	1.6	2	12,604	0.5	0.8
Places under 5,000	7	24,330	0.8	1.1	4	12,469	0.5	0.8
Places of 2,000 to 2,500	13	24,052	0.8	1.1	17	23,168	1.0	1.4
Places of 1,500 to 2,000	3	11,807	0.4	0.5	3	6,557	0.3	0.4
Places of 1,000 to 1,500	3	5,330	0.2	0.2	6	10,230	0.4	0.6
Places under 1,000	4	5,078	0.2	0.2	3	3,564	0.2	0.2
Other urban territory	3	2,139	0.1	0.1	5	2,817	0.1	0.2
Outside urbanized areas	...	324,481	10.9	14.4	...	369,518	15.8	22.9
Places of 25,000 or more	2	235,904	8.3	11.4	2	200,627	8.6	12.4
Places of 10,000 to 25,000	2	70,075	2.3	3.1	22	73,939	3.2	4.6
Places of 5,000 to 10,000	4	73,670	2.4	3.3	4	53,681	2.3	3.3
Places of 2,500 to 5,000	8	98,902	1.9	2.6	5	33,004	1.4	2.0
Places under 2,500	14	53,257	1.7	2.4	11	40,003	1.7	2.5
RURAL								
Total	...	846,857	27.3	100.0	...	727,099	31.0	100.0
Places of 1,000 to 2,500	42	61,938	2.0	7.4	38	57,949	2.4	7.9
Places of 500 to 1,000	5	10,628	0.3	1.2	8	17,017	0.7	2.3
Places of 1,500 to 2,500	14	34,303	0.8	2.9	10	17,338	0.7	2.4
Other rural territory	23	27,639	0.9	3.3	20	23,594	1.0	3.2
...	...	783,919	25.2	92.6	...	669,150	28.6	92.0
UNCLASSIFIED AREAS								
Total	2	1,997,928	64.4	100.0	2	1,415,275	60.4	100.0
Areas of 1,000,000 or more	2	1,997,928	64.4	100.0	2	1,415,275	60.4	100.0
Areas of 500,000 to 1,000,000
Areas of 250,000 to 500,000
Areas of 100,000 to 250,000
Areas under 100,000

1 There were 66 places of 2,500 or more.
 2 There were 33 places of 2,500 or more.

Table 3.—POPULATION IN GROUPS OF PLACES ACCORDING TO SIZE: 1900 TO 1960

Subject and size of place	1960		1950		1940	1930	1920	1910	1900
	Current urban definition	Previous urban definition	Current urban definition	Previous urban definition ¹					
NUMBER OF PLACES									
Urban territory	81	45	50	37	24	21	18	15	14
Places of 2,500 or more	66	45	33	37	24	21	18	15	14
Places of 1,000,000 or more	1	1	1	1	1	1	1	1	1
Places of 500,000 to 1,000,000	1	1	1	1	1	1	1	1	1
Places of 250,000 to 500,000	1	1	1	1	1	1	1	1	1
Places of 100,000 to 250,000	1	1	1	1	1	1	1	1	1
Places of 50,000 to 100,000	4	5	2	2	2	2	2	2	2
Places of 25,000 to 50,000	6	6	2	2	2	2	2	2	2
Places of 10,000 to 25,000	21	7	8	10	6	3	3	3	2
Places of 5,000 to 10,000	13	12	7	7	3	3	3	4	4
Places of 2,500 to 5,000	21	14	15	13	12	12	10	7	7
Places under 2,500	15	...	17
Rural territory	114	117	124	118	121	116	102	104	85
Places of 1,000 to 2,500	42	42	38	37	29	26	25	25	19
Places under 1,000	72	75	76	81	92	90	77	79	66
Cumulative summary:									
Places of 1,000,000 or more	1	1	1	1	1	1	1	1	1
Places of 500,000 or more	1	1	1	1	1	1	1	1	1
Places of 250,000 or more	1	1	1	1	1	1	1	1	1
Places of 100,000 or more	1	1	1	1	1	1	1	1	1
Places of 50,000 or more	5	6	1	2	1	1	1	1	1
Places of 25,000 or more	11	12	3	7	3	3	3	1	1
Places of 10,000 or more	32	19	11	17	9	6	5	4	3
Places of 5,000 or more	45	31	18	24	12	8	8	8	7
Places of 2,500 or more	66	45	33	37	24	21	18	15	14
POPULATION									
Urban territory	2,253,832	1,742,138	1,615,902	1,425,707	1,080,351	974,869	869,422	658,192	591,206
Places of 2,500 or more	1,905,299	1,742,138	1,223,216	1,425,707	1,080,351	974,869	869,422	658,192	591,206
Places of 1,000,000 or more
Places of 500,000 to 1,000,000	939,024	939,024	949,708	949,708	859,100	804,874	733,826	558,485	508,957
Places of 250,000 to 500,000
Places of 100,000 to 250,000
Places of 50,000 to 100,000	259,938	355,010	...	64,178
Places of 25,000 to 50,000	195,978	186,614	73,939	184,611	71,974	68,608	57,901
Places of 10,000 to 25,000	338,424	124,119	101,489	137,088	81,088	37,962	22,280	48,757	30,719
Places of 5,000 to 10,000	94,348	87,309	45,608	45,608	23,172	20,547	27,734	28,842	28,842
Places of 2,500 to 5,000	77,587	50,062	52,472	44,534	45,017	42,878	34,378	23,236	22,688
Other urban territory	324,481	...	369,518
Rural territory	846,897	1,358,551	727,099	917,294	740,893	656,657	580,239	637,154	596,838
Places of 1,000 to 2,500	62,938	67,108	57,949	57,496	44,573	36,797	35,614	35,936	27,953
Places under 1,000	32,331	34,470	35,298	38,115	45,304	42,090	34,531	32,852	28,714
Other rural territory	751,588	1,256,973	633,852	821,683	651,016	577,810	510,094	568,366	540,171
Cumulative summary:									
Places of 1,000,000 or more	1	1	1	1	1	1	1	1	1
Places of 500,000 or more	939,024	939,024	949,708	949,708	859,100	804,874	733,826	558,485	508,957
Places of 250,000 or more	939,024	939,024	949,708	949,708	859,100	804,874	733,826	558,485	508,957
Places of 100,000 or more	939,024	939,024	949,708	949,708	859,100	804,874	733,826	558,485	508,957
Places of 50,000 or more	1,198,962	1,294,034	949,708	1,013,886	859,100	804,874	733,826	558,485	508,957
Places of 25,000 or more	1,394,940	1,480,648	1,023,647	1,198,497	931,074	873,482	791,727	558,485	508,957
Places of 10,000 or more	1,733,364	1,604,767	1,125,136	1,335,585	1,012,162	911,444	814,007	607,242	539,676
Places of 5,000 or more	1,827,712	1,692,076	1,170,744	1,381,193	1,035,334	931,991	835,044	634,976	568,518
Places of 2,500 or more	1,905,299	1,742,138	1,223,216	1,425,707	1,080,351	974,869	869,422	658,192	591,206
PERCENT OF TOTAL POPULATION									
Urban territory	72.7	56.2	69.0	60.8	59.3	59.8	60.0	50.8	49.8
Places of 2,500 or more	61.4	56.2	52.2	60.8	58.3	59.8	60.0	50.8	49.8
Places of 1,000,000 or more
Places of 500,000 to 1,000,000	30.3	30.3	40.5	40.5	47.2	49.3	50.6	43.1	42.8
Places of 250,000 to 500,000
Places of 100,000 to 250,000
Places of 50,000 to 100,000	8.4	11.4	...	2.7
Places of 25,000 to 50,000	6.3	6.0	3.2	7.9	4.0	4.2	4.0
Places of 10,000 to 25,000	10.9	4.0	4.3	5.9	4.5	2.3	1.5	3.8	2.6
Places of 5,000 to 10,000	3.0	2.8	1.9	1.9	1.3	1.3	1.5	2.1	2.4
Places of 2,500 to 5,000	2.5	1.6	2.2	1.9	2.5	2.6	2.4	1.8	1.9
Places under 2,500	6.8	...	1.0
Other urban territory	10.5	...	15.8
Rural territory	27.3	43.8	31.0	39.2	40.7	40.2	40.0	49.2	50.2
Places of 1,000 to 2,500	2.0	2.2	2.5	2.5	2.4	2.3	2.5	2.8	2.4
Places under 1,000	1.0	1.1	1.5	1.6	2.5	2.6	2.4	2.5	2.4
Other rural territory	24.2	40.5	27.1	35.1	35.7	35.4	35.2	43.9	45.5
Cumulative summary:									
Places of 1,000,000 or more
Places of 500,000 or more	30.3	30.3	40.5	40.5	47.2	49.3	50.6	43.1	42.8
Places of 250,000 or more	30.3	30.3	40.5	40.5	47.2	49.3	50.6	43.1	42.8
Places of 100,000 or more	30.3	30.3	40.5	40.5	47.2	49.3	50.6	43.1	42.8
Places of 50,000 or more	38.7	41.7	40.5	43.3	47.2	49.3	50.6	43.1	42.8
Places of 25,000 or more	45.0	47.8	43.7	51.2	51.1	53.5	54.6	43.1	42.8
Places of 10,000 or more	55.9	51.8	48.0	57.0	55.6	55.9	56.2	46.9	45.4
Places of 5,000 or more	58.9	54.6	50.0	58.9	56.8	57.1	57.6	49.0	47.9
Places of 2,500 or more	61.4	56.2	52.2	60.8	59.3	59.8	60.0	50.8	49.8

¹ Revised since publication of 1950 reports.

Table 4.—POPULATION IN INCORPORATED AND UNINCORPORATED PLACES ACCORDING TO SIZE: 1960

Size of place and urban-rural classification	All places		Incorporated places		Unincorporated places		Size of place and urban-rural classification	All places		Incorporated places		Unincorporated places	
	Number	Population	Number	Population	Number	Population		Number	Population	Number	Population	Number	Population
Total	195	2,826,620	154	1,997,840	41	828,780							
							In urbanized areas—Con.						
500,000 or more	1	939,024	1	939,024	5,000 to 10,000	5	35,446	5	35,446
250,000 to 500,000	2,500 to 5,000	7	24,330	7	24,330
100,000 to 250,000	2,000 to 2,500	5	11,507	5	11,507
50,000 to 100,000	4	259,938	4	259,938	1,500 to 2,000	3	5,330	3	5,330
25,000 to 50,000	6	195,978	3	96,185	3	99,813	1,000 to 1,500	4	5,076	4	5,076
20,000 to 25,000	4	90,809	2	45,129	2	45,680	500 to 1,000	2	1,829	2	1,829
10,000 to 20,000	17	247,615	9	78,980	12	168,625	200 to 500	1	310	1	310
5,000 to 10,000	13	94,348	12	87,309	1	7,039	Under 200
2,500 to 5,000	21	77,587	14	50,062	7	27,525							
2,000 to 2,500	10	22,005	10	22,005	Other urban territory	28	255,904	20	221,340	8	34,564
1,500 to 2,000	17	30,133	10	18,106	7	12,027	25,000 to 50,000	2	70,075	2	70,075
1,000 to 1,500	27	32,713	22	26,380	5	6,133	20,000 to 25,000	2	45,129	2	45,129
500 to 1,000	30	22,406	30	22,406	10,000 to 20,000	2	28,541	2	28,541
200 to 500	30	10,382	30	10,382	5,000 to 10,000	8	58,902	7	51,863	1	7,039
Under 200	15	1,682	15	1,682	2,500 to 5,000	14	53,257	7	25,732	7	27,525
In unincorporated areas	53	1,873,447	33	1,099,391	20	774,056	Rural territory	114	95,269	102	77,109	12	18,160
500,000 or more	1	939,024	1	939,024	2,000 to 2,500	5	10,498	5	10,498
250,000 to 500,000	1,500 to 2,000	14	24,803	7	12,776	7	12,027
100,000 to 250,000	1,000 to 1,500	23	27,637	18	21,504	5	6,133
50,000 to 100,000	4	259,938	4	259,938	500 to 1,000	28	20,577	28	20,577
25,000 to 50,000	4	125,903	1	26,090	3	99,813	200 to 500	29	10,072	29	10,072
20,000 to 25,000	2	45,680	2	45,680	Under 200	15	1,682	15	1,682
10,000 to 20,000	15	219,074	3	50,449	12	168,625							

Table 5.—POPULATION OF INCORPORATED PLACES OF 10,000 OR MORE FROM EARLIEST CENSUS TO 1960

[Minus sign (-) denotes decrease]

Incorporated place and census year	Population	Increase over preceding census		Incorporated place and census year	Population	Increase over preceding census		Incorporated place and census year	Population	Increase over preceding census	
		Number	Percent			Number	Percent			Number	Percent
ANNAPOLIS: ¹				COLLEGE PARK:				HYATTSVILLE:			
1960	23,305	13,338	132.8	1960	18,482	7,312	65.5	1960	15,168	2,860	23.2
1930	10,047	235	2.4	1930	11,170	1930	12,308	5,733	67.2
1940	9,812	9	0.1					1940	45,129	6,575	54.2
1920	9,883	1,283	13.1	CORNWALL:				1930	4,264	1,589	59.4
1925	8,528	256	3.1	1960	33,415	-4,264	-11.3	1925	2,675	758	39.5
1910	8,262	605	7.9	1930	37,679	-1,804	-4.6	1910	1,917	695	56.9
1900	7,657	53	0.7	1940	39,483	1,736	4.6	1900	1,222	-287	-19.0
1890	7,604	96	1.4	1930	37,747	7,920	26.5	1890	1,509	1,221	424.0
1880	6,642	896	14.6	1920	29,837	7,998	36.6	1880	288
1870	5,764	1,215	26.8	1910	21,839	4,711	27.5				
1860	4,539	1,518	30.4	1900	17,128	4,399	34.6	ROCKVILLE:			
1850	3,011	219	7.8	1890	12,729	2,036	19.0	1960	26,090	19,156	276.3
1840	2,792	169	6.4	1880	10,693	3,637	32.7	1930	6,934	4,887	238.7
1830	2,623	363	18.1	1870	8,056	3,978	97.5	1940	2,047	587	40.2
1820	2,260	1860	4,078	-1,995	-32.9	1930	1,460	315	27.5
				1850	6,073	1920	1,145	-36	-3.0
								1910	1,181	71	6.4
BALTIMORE:				FREDERICK:				1900	1,110	-458	-29.2
1960	939,024	-10,684	-1.1	1960	21,744	3,602	19.9	1890	1,568	880	127.9
1930	949,708	90,638	10.3	1930	18,142	2,340	14.8	1880	688	28	4.2
1940	879,100	34,326	6.7	1940	15,802	1,368	9.5	1870	660	295	80.8
1930	804,874	71,048	9.7	1930	14,434	3,368	30.4	1860	365
1920	733,826	175,341	31.4	1920	11,066	655	6.3				
1910	568,483	49,528	9.7	1910	10,411	1,115	12.0	SALISBURY:			
1900	508,957	74,318	17.2	1900	9,296	1,103	13.5	1960	16,302	1,161	7.7
1890	434,439	102,126	30.7	1890	8,193	-466	-5.4	1930	15,141	1,828	13.7
1880	332,313	64,999	24.3	1880	8,659	133	1.6	1940	13,313	2,316	21.1
1870	287,354	44,936	25.9	1870	8,526	383	4.7	1930	10,997	3,444	45.6
1860	212,418	43,364	25.7	1860	8,143	2,115	35.1	1920	7,553	863	12.9
1850	169,054	66,741	65.2	1850	6,028	846	16.3	1910	6,690	2,413	56.4
1840	102,303	21,693	26.9	1840	5,182	755	17.1	1900	4,277	1,372	47.2
1830	80,620	17,882	28.5	1830	4,427	787	21.6	1890	2,905	324	12.6
1820	62,738	16,183	34.8	1820	3,640	1880	2,581	517	25.0
1810	46,585	20,041	75.6					1870	2,064
1800	26,524	13,011	96.4	HACKBURN:							
1790	13,503	1960	36,660	400	1.1	TAKOMA PARK:			
				1930	38,260	3,769	11.6	1960	16,799	3,458	25.9
CAMBRIDGE:				1940	32,491	1,630	5.3	1930	13,341	4,403	49.3
1960	12,239	1,888	18.2	1930	30,861	2,797	10.0	1940	8,938	2,523	39.3
1930	10,351	269	2.5	1920	28,064	11,597	78.0	1930	6,415	3,247	102.5
1940	10,102	1,958	18.2	1910	16,367	2,932	21.5	1920	3,168	1,926	155.1
1930	8,544	1,077	14.4	1900	13,391	3,473	34.3	1910	1,242	486	64.3
1920	7,487	1,060	18.2	1890	10,118	3,491	52.7	1900	756	592	361.0
1910	6,427	660	11.5	1880	6,637	848	14.7	1890	164
1900	5,767	1,595	37.1	1870	4,779	1,647	39.9				
1890	4,193	1,930	85.3	1860	4,132	223	6.5				
1880	2,262	628	37.8	1850	3,879	254	7.0				
1870	1,642	-289	-11.8	1840	3,628	254	7.5				
1860	1,862	1830	3,371				

¹ Figures for 1900 to 1940 revised since publication of Vol. I, 1940, by the subtraction of the population (3,297 in 1940; 2,728 in 1930; 2,696 in 1920; 347 in 1910; 868 in 1900) of the United States Naval Academy.
² Estimated.

Table 6.—AREA AND POPULATION OF COUNTIES, URBAN AND RURAL: 1960 AND 1950

[Minus sign (-) denotes decrease. Percent not shown where less than 0.1]

County	Map reference	Land area in square miles, 1960	1960 population							1950 population			Percent increase, 1950 to 1960				
			Total		Urban				Rural			Total	Urban	Rural	Total	Urban	Rural
			Number	Per square mile	Total	Per cent of total population	Urbanized areas	Other urban territory	Total	Places of 1,000 to 2,500	Other rural territory						
The State.....	...	9,874	3,100,689	314.0	2,253,832	72.7	1,997,928	255,904	846,897	63,355	783,502	2,343,001	1,615,902	727,099	32.3	39.5	16.5
Allegheny.....	A-3	426	84,169	197.6	47,727	56.7	...	47,727	36,442	6,412	30,030	89,596	47,986	41,970	-6.0	-0.5	-12.3
Anne Arundel.....	D-12	417	206,634	495.5	97,391	47.1	65,376	32,015	109,243	6,762	102,481	117,392	37,432	79,960	76.0	160.2	36.6
Baltimore.....	A-12	608	492,428	809.9	419,414	85.2	408,806	10,608	73,014	1,426	71,588	270,373	189,308	80,967	82.2	121.6	39.8
Baltimore city.....	G-13	79	939,024	11,886.4	939,024	100.0	949,708	949,708	...	1.1	-1.1	...
Calvert.....	G-12	219	15,826	72.3	15,826	...	15,826	12,100	...	12,100	30.8	...	30.8
Caroline.....	E-16	320	19,462	60.8
Garroll.....	A-10	453	52,785	116.5	6,123	11.6	...	6,123	46,662	4,808	41,854	18,234	...	18,234	6.7	...	6.7
Cecil.....	A-14	352	48,408	137.5	5,989	12.4	...	5,989	42,419	2,732	39,687	33,356	5,245	28,111	45.1	14.2	50.9
Charles.....	G-11	498	32,972	71.1	12,239	41.3	...	12,239	17,427	1,035	16,392	27,815	10,351	17,464	6.7	18.2	-0.2
Dorchester.....	G-16	580	29,666	51.1
Frederick.....	A-9	664	71,930	108.3	25,299	35.2	...	25,299	46,631	5,790	40,841	62,287	23,894	40,393	15.5	15.6	15.4
Garretts.....	A-1	662	20,420	30.8	20,420	1,977	18,443	21,259	...	21,259	-3.9	...	-3.9
Harford.....	A-13	448	76,722	171.3	22,489	29.3	...	22,489	54,233	1,670	52,563	51,782	13,331	38,451	48.2	68.7	41.0
Howard.....	G-11	250	36,152	144.6	5,742	15.9	5,742	...	30,410	1,341	29,069	23,119	3,411	19,708	56.4	68.3	54.3
Kent.....	C-16	284	15,481	54.5	3,602	23.3	...	3,602	11,879	1,073	10,806	13,677	3,143	10,534	13.2	14.6	12.8
Montgomery.....	C-9	493	340,928	691.5	293,287	86.1	289,540	3,847	47,541	...	47,541	164,401	124,471	39,930	107.4	135.7	19.1
Prince Georges.....	E-12	485	397,395	736.9	297,943	83.4	289,440	8,503	59,452	3,067	56,385	194,182	140,368	53,814	84.1	112.3	10.5
Queen Annes.....	D-15	373	16,569	44.4	16,569	1,863	14,706	14,979	...	14,979	13.6	...	13.6
St. Marys.....	H-12	367	38,915	106.0	7,039	18.1	...	7,039	31,876	1,281	30,595	29,111	...	29,111	33.7	...	33.7
Somerset.....	I-16	332	19,623	59.1	3,540	18.0	...	3,540	16,083	1,351	14,732	20,745	3,388	17,057	-3.4	-4.0	-5.7
Talbot.....	E-15	279	21,578	77.3	6,337	29.4	...	6,337	15,241	1,484	13,757	19,428	4,836	14,592	11.1	31.0	4.4
Washington.....	A-6	462	91,219	197.4	40,916	44.9	...	40,916	50,303	5,066	45,235	78,886	36,260	42,626	15.6	12.8	18.0
Wicomico.....	H-16	380	49,050	129.1	16,302	33.2	...	16,302	32,748	2,438	30,310	39,641	15,141	24,500	23.7	7.7	33.7
Worcester.....	H-18	483	23,733	49.1	3,329	14.0	...	3,329	20,404	4,397	16,007	23,148	3,191	19,957	2.5	4.3	2.2

Table 7.—POPULATION OF COUNTIES, BY MINOR CIVIL DIVISIONS: 1940 TO 1960

["U" denotes an unincorporated place. For changes in boundaries, etc., between 1940 and 1960, see table 6 for this State in U. S. Census of Population: 1950, Vol. I or II. Total population of a place located in 2 or more minor civil divisions appears in table 8. "Districts" shown here are election districts. Minor civil division figures for 1960 and 1940 do not necessarily add to county totals]

County and minor civil division	1960	1950	1940	County and minor civil division	1960	1950	1940	County and minor civil division	1960	1950	1940
ALLEGANY COUNTY.....	84,169	89,556	86,973	ALLEGANY COUNTY--Con.	BALTIMORE COUNTY--Con.
Dist. 1, Orleans.....	596	635	804	Dist. 29, La Vale.....	5,899	4,257	3,088	District 9.....	86,045	40,856	21,641
Dist. 2, Oldtown.....	843	933	987	Greensport (U) (pt.).....	43	Loch Raven (U).....	23,278
Dist. 3, Flintstone.....	1,328	1,528	1,284	La Vale-Narrows Park (U) (pt.).....	3,922	Parvillie-Carney (U) (pt.).....	17,496
Dist. 4, Cumberland Canal.....	12,652	14,602	14,840	Dist. 30, Zihlman.....	734	825	589	Stonesleigh-Rodgers Forge (U).....	15,645
Cumberland city (pt.).....	12,582	14,393	14,712	Dist. 31, McCoole.....	1,471	1,090	905	Timonium-Lutherville (U) (pt.).....	3,466
Dist. 5, Wills Creek.....	7,944	8,368	7,925	Dist. 32, Frostburg.....	970	554	1,204	Towson (U).....	19,090
Cumberland city (pt.).....	6,002	6,569	6,790	Frostburg city (pt.).....	570	554	1,204	District 10.....	3,740	2,588	2,448
Dist. 6, Cumberland River.....	8,433	8,756	8,351	Dist. 33, Kifer.....	181	265	...	District 11.....	20,582	10,450	7,225
Cumberland city (pt.).....	6,252	6,852	7,284	ANNE ARUNDEL COUNTY.....	206,634	117,392	68,375	Parvillie-Carney (U) (pt.).....	3,455
La Vale-Narrows Park (U) (pt.).....	109	District 1.....	10,322	6,046	4,304	District 12.....	70,694	40,155	15,436
Potomac Park (U).....	1,016	Woodland Beach (U).....	1,855	Dundalk (U) (pt.).....	70,659
Dist. 7, Rawlings.....	3,250	3,627	2,820	District 2.....	14,082	24,212	13,166	District 13.....	35,708	19,205	13,366
Greensport (U) (pt.).....	1,625	District 3.....	5	5	9	Arbutus-Halethorpe-Relay (U) (pt.).....	22,053
Dist. 8, Westernport.....	5,231	5,439	5,658	Highland Beach town.....	5	5	9	Landowen-Baltimore Highlands (U).....	13,134
Luke town.....	587	820	988	District 3.....	58,992	26,319	10,938	District 14.....	27,742	16,394	10,420
Westernport town.....	3,599	3,431	3,565	Green Haven (U).....	1,302	Owerlea (U).....	10,795
Dist. 9, Barton.....	1,315	1,492	1,673	Orchard Beach (U).....	1,691	1,203	...	Parvillie-Carney (U) (pt.).....	6,285
Barton town.....	731	695	781	Riverside Beach (U).....	4,922	1,949	...	District 15.....	94,283	64,178	28,402
Dist. 10, Lonaconing.....	1,617	1,709	1,846	Severna Park-Round Bay (U).....	3,728	1,995	...	Dundalk (U) (pt.).....	11,769
Lonaconing town (pt.).....	874	1,080	1,107	District 4.....	37,329	20,568	10,932	Essex (U).....	35,205
Dist. 11, Frostburg.....	962	1,028	1,148	Osenton (U).....	1,914	1,059	...	Middle River (U).....	10,825
Frostburg city (pt.).....	845	939	907	District 5.....	50,214	24,962	11,735	Oliver Beach-Twin River Beach (U).....	1,426
Dist. 12, Frostburg.....	2,262	2,372	1,456	District 6.....	28,006	10,047	15,069	Sparrows Point-Fort Howard-Eggersville (U).....	11,775
Frostburg city (pt.).....	1,715	1,828	936	Annapolis city.....	23,385	10,047	9,812	BALTIMORE CITY.....	939,024	949,708	859,100
Dist. 13, Mount Savage.....	2,435	3,138	3,245	District 7.....	4,144	2,733	...	CALVERT COUNTY.....	15,826	12,100	10,484
Mount Savage (U).....	1,639	2,094	...	District 8.....	3,545	2,505	2,334	Dist. 1, Solomons Island.....	5,423	4,123	3,513
District 14.....	1,208	1,726	1,944	BALTIMORE COUNTY.....	492,428	270,273	155,825	Solomons town.....	183	270	266
Cumberland city (pt.).....	1,208	1,726	1,944	District 1.....	53,809	29,661	21,221	Dist. 2, Prince Frederick.....	4,760	3,657	3,092
Dist. 15, Lonaconing.....	2,186	2,227	2,430	Arbutus-Halethorpe-Relay (U) (pt.).....	349	Dist. 3, Sunderland.....	5,643	4,320	3,879
Lonaconing town (pt.).....	1,203	1,209	1,322	Getonsville (U).....	37,372	Chesapeake Beach town.....	731	504	326
Dist. 16, North Branch.....	2,165	2,265	1,670	Woodlawn-Rockdale-Millford Mills (U) (pt.).....	3,515	North Beach town.....	606	314	246
Dist. 17, Vale Summit.....	356	418	390	District 2.....	27,504	10,467	7,501	CAROLINE COUNTY.....	19,462	18,234	17,549
Dist. 18, Midland.....	1,476	1,842	1,954	Woodlawn-Rockdale-Millford Mills (U) (pt.).....	15,739	Dist. 1, Henderson.....	1,739	1,627	1,568
Midland town.....	737	889	935	District 3.....	26,999	11,072	7,150	Goldstone town.....	204	198	197
Dist. 19, Shaft.....	767	900	949	Pikesville (U).....	18,737	Henderson town.....	129	106	...
Dist. 20, Ellersdale.....	1,931	1,813	1,569	District 4.....	15,604	9,453	7,596	Marydel town.....	130	110	78
Dist. 21, Cross.....	1,263	1,240	969	Glyndon-Reisterstown (U).....	4,216	2,077	...	Templeville town (pt.).....	28	16	25
Dist. 22, Union Street.....	4,247	4,746	4,875	Owings-Mills (U).....	3,810	Dist. 2, Greensboro.....	2,744	2,637	2,445
Cumberland city (pt.).....	3,676	4,191	4,366	District 5.....	2,551	2,106	2,121	Bridgeton town.....	39	16	25
Dist. 23, Decatur Street.....	4,284	4,421	4,755	District 6.....	1,627	1,567	1,177	Greensboro town.....	1,160	1,181	737
Cumberland city (pt.).....	3,695	3,948	4,387	District 7.....	4,167	3,413	3,385				
Dist. 24, Eckhart.....	1,655	1,816	1,955	District 8.....	21,408	6,736	...				
Frostburg city (pt.).....	105	...	1,012	Cockeysville (U).....	2,582				
Dist. 25, Pekin.....	284	735	711	Timonium-Lutherville (U) (pt.).....	8,799				
Dist. 26, Frostburg.....	2,081	2,305	2,061								
Frostburg city (pt.).....	1,724	1,960	1,961								
Dist. 27, Gilmore.....	390	673	662								
Dist. 28, Frostburg.....	1,980	1,770	1,872								
Frostburg city (pt.).....	1,763	1,595	1,639								

See footnotes at end of table, p. 11.

Table 7.—POPULATION OF COUNTIES, BY MINOR CIVIL DIVISIONS: 1940 TO 1960—Con.

["U" denotes an unincorporated place. For changes in boundaries, etc., between 1940 and 1950, see table 6 for this State in U. S. Census of Population: 1950, Vol. I or II. Total population of a place located in 2 or more minor civil divisions appears in table 8. "Districts" shown here are election districts. Minor civil division figures for 1950 and 1940 do not necessarily add to county totals]

Table with 13 columns: County and minor civil division, 1960, 1950, 1940, County and minor civil division, 1960, 1950, 1940, County and minor civil division, 1960, 1950, 1940. Rows include counties like CAROLINE, BALTIMORE, BOSTON, and various districts within them.

See Footnotes at end of table, p. 11.

Table 7.—POPULATION OF COUNTIES, BY MINOR CIVIL DIVISIONS: 1940 TO 1960—Con.

["U" denotes an unincorporated place. For changes in boundaries, etc. between 1940 and 1950, see table 6 for this State in U. S. Census of Population: 1950, Vol. I or II. Total population of a place located in 2 or more minor civil divisions appears in table 8. "Districts" shown here are election districts. Minor civil division figures for 1950 and 1940 do not necessarily add to county totals]

County and minor civil division	1960	1950	1940	County and minor civil division	1960	1950	1940	County and minor civil division	1960	1950	1940		
PRINCE GEORGES COUNTY—Con.				SOMERSET COUNTY—Con.				WASHINGTON COUNTY—Con.					
Dist. 18, Seat Pleasant	26,754	17,678	10,750	Dist. 4, Dublin	1,292	1,296	1,396	Dist. 19, Keedysville	910	1,011	945		
Capitol Heights town ¹⁴	3,138	2,729	2,036	Dist. 5, Mount Vernon	903	955	1,058	Keedysville town	433	417	404		
Cheverly town (pt.)	312	301	75	Dist. 6, Fairmount	847	867	908	Dist. 20, Deaneville	1,064	882	856		
Fairmount Heights town	2,308	2,097	1,391	Dist. 7, Crisfield	3,816	3,999	4,208	Dist. 21, Hagerstown	5,765	7,075	5,702		
Seat Pleasant town ¹⁴	5,368	2,255	1,553	Crisfield city	3,540	3,688	3,908	Hagerstown city (pt.) ¹⁸	5,765	5,756	5,021		
Dist. 19, Riverdale	15,895	12,465	6,187	Dist. 8, Lawson	1,525	1,654	1,810	Dist. 22, Hagerstown	5,938	7,323	6,102		
Carrollton city (pt.) ¹⁴	Dist. 9, Tangler	509	521	510	Hagerstown city (pt.) ¹⁸	5,938	6,098	5,230		
College Park city (pt.) ¹²	Dist. 10, Smith Island	688	684	680	Dist. 23, Wilson	2,143	1,845	1,074		
Edmonston town (pt.)	4,389	5,530	2,550	Dist. 11, Dames Quarter	324	371	347	Dist. 24, Cedar Lawn	682	4,404	4,687		
Riverdale town ¹⁴	4,389	5,530	2,550	Dist. 12, Asbury	1,327	1,490	1,454	Dist. 25, Hagerstown	10,097	9,879	7,739		
University Park town (pt.)	3,091	2,205	878	Dist. 13, Westover	1,013	1,134	973	Hagerstown city (pt.) ¹⁸	10,097	8,717	6,901		
Dist. 20, Lanham	12,488	3,998	1,758	Dist. 14, Deal Island	810	957	1,048	Dist. 26, Halfway	5,232	2,322	1,769		
Carrollton city (pt.) ¹⁴	3,385	Dist. 15, East Princess Anne	2,221	2,215	1,750	Halfway (U)	4,256		
Glenarden town (pt.) ¹⁴	455	128	...	Princess Anne town (pt.)	627	670	353	Dist. 27, Poptain Head	3,258		
Dist. 21, Berwyn	30,855	19,576	7,741	TALBOT COUNTY				WICOMICO COUNTY					
Berwyn Heights town	2,376	674	453	Dist. 1, Easton	21,978	19,428	18,784	Dist. 1, Barren Creek	49,050	39,641	34,530		
College Park city (pt.) ¹²	17,264	11,170	...	Dist. 2, Easton	10,127	8,687	7,733	Dist. 2, Marcella Springs	1,493	1,502	1,595		
Greenbelt city	7,479	7,074	2,769	Dist. 3, St. Michaels	4,377	4,236	4,528	Dist. 3, Quantico	380	428	418		
University Park town (pt.)	7	St. Michaels town	3,874	3,239	3,370	Dist. 3, Tynakin	1,024	946	931		
QUEEN ANNES COUNTY			16,569	14,579	14,476	Dist. 4, St. Michaels	1,484	1,470	1,329	Dist. 4, Pittsburg	1,116	1,244	1,263
Dist. 1, Dixon	2,095	1,876	2,034	Dist. 5, Trappe	2,906	2,826	3,034	Pittsburg town	1,542	1,585	1,478		
Barley town	142	108	119	Oxford town	852	757	826	Dist. 5, Parsons	488	497	...		
Sudlersville town	394	347	292	Trappe town	358	323	296	Dist. 5, Parsons	11,239	8,330	6,861		
Templeville town (pt.)	70	66	...	Dist. 4, Chapel	2,714	2,481	2,614	Salisbury city (pt.) ¹⁸	5,286	5,000	4,694		
Church Hill town	1,555	1,700	1,809	Queen Anne town (pt.) ¹⁷	183	Dist. 6, Dennis	815	767	737		
Church Hill town	263	271	316	Dist. 5, Bay Hundred	1,977	2,203	2,033	Dist. 7, Trappe	1,182	860	940		
Dist. 2, Centerville	3,591	3,362	3,287	WASHINGTON COUNTY ¹⁸				Dist. 8, Nutters	1,871	1,314	1,094		
Centerville town ¹⁵	1,863	1,804	1,341	Dist. 1, Sharpsburg	91,219	78,864	68,838	Fruitland town (pt.)	78	81	...		
Dist. 4, Kent Island	3,114	2,205	2,094	Sharpsburg town	2,051	1,652	1,813	Dist. 9, Salisbury	8,331	6,078	5,106		
Dist. 5, Queenstown	3,375	3,095	2,813	Dist. 2, Williamsport	861	834	834	Salisbury city (pt.)	3,271	3,314	3,489		
Queenstown town	355	316	275	Dist. 3, Williamsport	3,529	3,290	3,127	Dist. 10, Sharpsburg	1,213	1,248	1,173		
Dist. 6, Ruthsburg	975	1,010	1,163	Williamsport town	1,853	1,890	1,772	Sharpsburg town	620	680	653		
Queen Anne town (pt.) ¹⁵	100	Dist. 3, Hagerstown	9,589	6,629	6,125	Dist. 11, Delmar	2,136	2,037	2,009		
Dist. 7, Drumpton	1,864	1,331	1,276	Hagerstown city (pt.) ¹⁸	9,589	6,629	6,125	Delmar town	1,291	1,328	1,184		
Millington town (pt.)	74	Dist. 4, Clear Spring	1,909	1,985	1,735	Dist. 12, Nantuxok	1,246	1,223	1,485		
ST. MARYS COUNTY			38,915	29,111	14,626	Clear Spring town	488	500	Dist. 13, Camden	9,545	7,560	5,265	
Dist. 1, St. Inigoes	3,496	2,801	1,880	Dist. 5, Hancock	3,909	2,889	2,988	Salisbury city (pt.)	7,745	6,827	5,130		
Dist. 2, Valley Lee	2,438	2,696	1,201	Hancock town ¹⁸	2,004	963	940	Dist. 14, Willards	1,231	1,268	1,234		
Dist. 3, Leonardtown	5,023	3,979	2,704	Dist. 6, Boonsboro	3,105	2,531	2,339	Willards town	531	464	285		
Leonardtown town ¹⁸	1,281	1,017	668	Boonsboro town	1,211	1,071	938	Dist. 15, Hebron	1,324	1,307	1,265		
Dist. 4, Chaptico	1,858	1,767	1,645	Dist. 7, Cavertown	2,445	2,066	2,044	Hebron town	794	723	804		
Dist. 5, Mechanicsville	2,481	2,051	1,778	Smithsburg town	586	601	619	Dist. 16, Fruitland	3,342	2,272	1,654		
Dist. 6, Hillville (Patuxent)	3,841	2,615	1,736	Dist. 8, Rohersville	1,440	1,432	1,366	Fruitland town (pt.)	1,069	947	...		
Dist. 7, Milestown	2,392	2,275	2,110	Dist. 9, Leitersburg	1,677	1,379	1,238	WORCESTER COUNTY ²⁰					
Dist. 8, Bay	16,510	10,575	1,287	Dist. 10, Funkstown	4,124	2,317	1,889	Dist. 1, Costans	5,262	5,018	4,311		
Lexington Park (U)	7,039	Funkstown town	968	798	...	Pocomoke City town	3,329	3,191	2,739		
Dist. 9, St. George Island	876	352	285	Dist. 11, Sandy Hook	1,364	1,218	1,428	Dist. 2, Snow Hill	4,522	3,866	3,674		
SOMERSET COUNTY			19,623	20,745	20,965	Dist. 12, Tilghmanton	2,612	2,185	2,311	Snow Hill town	2,311	2,091	1,926
Dist. 1, West Princess Anne	2,144	2,046	2,046	Dist. 13, Conococheague	3,406	2,062	1,729	Dist. 3, Berlin	6,195		
Princess Anne town (pt.)	724	737	589	Dist. 14, Ringold	2,876	2,261	1,662	Berlin town	4,046		
Dist. 2, St. Peters	617	643	747	Dist. 15, Indian Spring	1,992	1,662	1,566	Dist. 4, Newark	896	921	1,036		
Dist. 3, Brinkleys	1,587	1,913	2,030	Dist. 16, Beaver Creek	1,700	1,370	1,085	Dist. 5, St. Martin	1,599	1,579	1,451		

¹ ALLEGANY.—Part of district 8 annexed to Westernport town and part of Westernport town detached and area reverted to district 8. Parts of districts 24 and 32 annexed to Frostburg city.

² ANNE ARUNDEL.—Parts of districts 1, 3, and 6 annexed to district 2. Part of districts 2 and 6 annexed to Annapolis city and part of Annapolis city detached and area reverted to district 2. Part of district 2 annexed to district 6. Part of district 4 annexed to district 3. Figures for Annapolis city for 1940 revised to exclude population of United States Naval Academy (3,257), returned as in Annapolis city in 1940.

³ BALTIMORE.—County partially redistricted since 1950. Glyndon-Reisterstown returned as Reisterstown-Glyndon in 1950.

⁴ CAROLINE.—Part of district 3 annexed to Denton town. Part of district 5 annexed to Federalburg town.

⁵ CARROLL.—Part of district 13 annexed to Mount Airy town.

⁶ CECIL.—Part of district 6 annexed to Rising Sun town.

⁷ CHARLES.—District 3, Nanjemoy, changed from Cross Roads since 1950. District 5, Thompkinsville, changed from Harris Lot since 1950. District 6, Waldorf, changed from White Plains since 1950. District 7, Pomconkey and Potomac Heights, changed from Pomconkey since 1950. District 9, Hughesville, returned as Patuxent in 1950.

⁸ DORCHESTER.—Brookview and Galestown towns incorporated from parts of district 1. Part of district 7 annexed to Cambridge city.

⁹ FREDERICK.—Part of district 2 annexed to Frederick city. Parts of district 3, district 14, and district 23 annexed to district 24. Part of district 3 annexed to Middletown town. Part of district 5 annexed to Emmitsburg town. Part of district 12 annexed to district 25 coextensive with Brunswick town. Rosemont village incorporated from part of district 12. Part of district 18 annexed to Mount Airy town. Part of district 26 annexed to Walkersville town.

¹⁰ GARRETT.—Parts of district 7 and district 14 annexed to Oakland town. Kitamillerville town changed from Kitamillerville town since 1950.

¹¹ HANFORD.—Part of district 2 annexed to Aberdeen town. Part of district 3 annexed to Bel Air town.

¹² KENT.—Part of district 4 annexed to Chestertown town.

¹³ MONTGOMERY.—Part of district 12 annexed to district 1. Part of district 3 annexed to Poolesville town. Rockville town changed to city since 1950. Parts of district 4 annexed to districts 7 and 10 and part of district 10 annexed to district 4. Parts of district 4 and district 13 annexed to Rockville city. Part of district 7 annexed to Chevy Chase village. Chevy Chase Station Four village not returned separately in 1950. Part of district 9 annexed to Gaithersburg and Washington Grove towns. Part of district 11 annexed to Barnesville town. Part of district 13 annexed to Takoma Park city.

¹⁴ PRINCE GEORGES.—County partially redistricted since 1950. Parts of districts 1, 19, and 21 annexed to College Park city. College Park town changed to city since 1950. Parts of district 2 annexed to Eldensburg, Cheverly, and Landover Hills towns. Parts of districts 7 and 14 annexed to Bowie town. Part of district 10 annexed to Laurel town. Parts of district 12 annexed to Forest Heights town. Parts of districts 13 and 20 annexed to Glenarden town. Parts of districts 16 and 17 annexed to Hyattsville city. Part of district 16 annexed to Edmonston town. Part of district 17 annexed to Takoma Park and Mount Rainier cities. Parts of district 18 annexed to Capitol Heights and Seat Pleasant towns. Part of district 19 annexed to Riverdale town. Carrollton city incorporated from parts of districts 19 and 20.

¹⁵ QUEEN ANNES.—Part of district 3 annexed to Centerville town and part of Centerville town detached and area reverted to district 3. Queen Anne town incorporated from part of district 6.

¹⁶ ST. MARYS.—Part of district 3 annexed to Leonardtown town.

¹⁷ TALBOT.—Part of district 1 annexed to Easton town. Queen Anne town incorporated from part of district 4.

¹⁸ WASHINGTON.—County partially redistricted since 1950. Hagerstown city annexed areas from districts 22 and 25 and made coextensive with districts 3, 17, 21, 22, and 25. Part of district 5 annexed to Hancock city.

¹⁹ WICOMICO.—Part of district 5 annexed to Salisbury city.

²⁰ WORCESTER.—County partially redistricted since 1950. Part of district 1 annexed to Pocomoke City town. Part of district 10 annexed to Ocean City town.

Table 8.—POPULATION OF ALL INCORPORATED PLACES AND OF UNINCORPORATED PLACES OF 1,000 OR MORE: 1940 TO 1960

[“U” denotes an unincorporated place. Asterisk (*) denotes an incorporated place under 2,500 located in an urbanized area]

Place	County	1960	1950	1940	Place	County	1960	1950	1940
Aberdeen	Harford	9,479	2,944	1,525	Hebron	Wisconsin	754	723	804
Accident	Garrett	277	242	236	Henderson	Caroline	129	106	..
Annapolis	Anne Arundel	21,383	10,067	49,612	Highland Beach	Anne Arundel	..	5	9
Arbutus-Halethorpe Relay (U)	Baltimore	32,462	Hillcrest Heights (U)	Prince Georges	15,295
Baltimore	Baltimore	979,024	649,798	659,335	Hillsboro	Caroline	201	179	161
Baylor	Queen Annes	142	320	119	Harlock	Dorchester	1,035	944	800
Barnesville	Montgomery	145	120	123	Hyattsville	Prince Georges	15,168	12,308	6,575
Barton	Allegany	731	695	781	Indian Head	Charles	780	491	1,104
Bel Air	Harford	4,300	2,970	1,825	Jacobsville	Washington	433	417	404
Betha	Worcester	2,046	2,021	1,435	Kensington	Montgomery	2,175	1,611	931
Bowen Heights*	Prince Georges	2,776	674	453	Kittandellville*	Garrett	535	652	870
Bridgeton (U)	Montgomery	56,327	Landonville	Prince Georges	1,850	1,661	..
Burton	Kent	320	314	221	Langley Park (U)	Prince Georges	11,510
Calverton	Prince Georges	3,193	2,800	1,220	Lansdowne-Baltimore Highlands (U)	Baltimore	13,134
Camden	Washington	1,211	1,071	938	La Plata	Charles	1,214	780	488
Canton	Prince Georges	1,072	620	767	Laurel	Prince Georges	8,503	4,482	2,823
Centers	Prince Georges	1,693	3,323	2,433	Laytonville	Allegany	4,031
Chesapeake	Caroline	39	26	25	Leesville	Montgomery	196	132	127
Chesapeake Beach	Dorchester	140	137	262	Leeswood	St. Marys	1,281	1,017	668
Chesapeake Park	Dorchester	83	Lexington Park (U)	St. Marys	7,039
Chesapeake Shores	Frederick	3,355	3,752	3,856	Leok Lynn Heights	Garrett	476	415	339
Chesapeake View	Frederick	258	250	177	Loch Raven (U)	Baltimore	23,278
Chesapeake Village	Dorchester	12,239	10,391	10,391	Lomax	Allegany	2,077	2,289	2,429
Chesapeake Woods	Prince Georges	3,120	2,759	2,036	Lone Oak	Allegany	587	820	988
Chesapeake Yards	Prince Georges	3,383	Manchester	Carroll	1,108	1,027	763
Chesapeake Yards II	Prince Georges	3,383	Mandala Springs	Wisconsin	380	428	418
Chesapeake Yards III	Prince Georges	3,383	Marydel	Caroline	130	110	71
Chesapeake Yards IV	Prince Georges	3,383	Middle River (U)	Baltimore	10,825
Chesapeake Yards V	Prince Georges	3,383	Middleton	Frederick	1,036	936	839
Chesapeake Yards VI	Prince Georges	3,383	Midland	Allegany	737	889	935
Chesapeake Yards VII	Prince Georges	3,383	Millington	Kent	408	356	307
Chesapeake Yards VIII	Prince Georges	3,383	Morningside*	Prince Georges	1,708	1,520	..
Chesapeake Yards IX	Prince Georges	3,383	Mountain Lake Park	Garrett	975	891	551
Chesapeake Yards X	Prince Georges	3,383	Mount Airy	Carroll	1,352	1,061	791
Chesapeake Yards XI	Prince Georges	3,383	Mount Rainier	Frederick	9,855	10,989	4,830
Chesapeake Yards XII	Prince Georges	3,383	Mount Savage (U)	Prince Georges	9,855	10,989	4,830
Chesapeake Yards XIII	Prince Georges	3,383	Myersville	Allegany	1,639	2,094	..
Chesapeake Yards XIV	Prince Georges	3,383	New Market	Frederick	355	250	310
Chesapeake Yards XV	Prince Georges	3,383	New Windsor	Frederick	358	301	360
Chesapeake Yards XVI	Prince Georges	3,383	North Beach	Carroll	738	707	529
Chesapeake Yards XVII	Prince Georges	3,383	North Brentwood	Calvert	606	314	246
Chesapeake Yards XVIII	Prince Georges	3,383	North Park	Prince Georges	864	833	822
Chesapeake Yards XIX	Prince Georges	3,383	Oakland	Cecil	1,628	1,517	1,328
Chesapeake Yards XX	Prince Georges	3,383	Ocean City	Garrett	1,977	1,640	1,587
Chesapeake Yards XXI	Prince Georges	3,383	Oxton (U)	Worcester	983	1,234	1,052
Chesapeake Yards XXII	Prince Georges	3,383	Oliver Beach-Twin River Beach (U)	Anne Arundel	1,914	1,059	..
Chesapeake Yards XXIII	Prince Georges	3,383	Oxona Beach (U)	Baltimore	1,426
Chesapeake Yards XXIV	Prince Georges	3,383	Oxona Hills (U)	Anne Arundel	1,691	1,203	..
Chesapeake Yards XXV	Prince Georges	3,383	Oxona Park (U)	Baltimore	10,795
Chesapeake Yards XXVI	Prince Georges	3,383	Oxford	Baltimore	3,810
Chesapeake Yards XXVII	Prince Georges	3,383	Parville-Corney (U)	Talbot	852	757	826
Chesapeake Yards XXVIII	Prince Georges	3,383	Parkville	Baltimore	27,236
Chesapeake Yards XXIX	Prince Georges	3,383	Pineville (U)	Cecil	674	679	729
Chesapeake Yards XXX	Prince Georges	3,383	Pittsville	Baltimore	18,737
Chesapeake Yards XXXI	Prince Georges	3,383	Pocomoke City	Wisconsin	488	497	..
Chesapeake Yards XXXII	Prince Georges	3,383	Point of Rocks	Worcester	3,329	3,191	2,739
Chesapeake Yards XXXIII	Prince Georges	3,383	Port Deposit	Frederick	326	361	370
Chesapeake Yards XXXIV	Prince Georges	3,383	Potomac Park (U)	Montgomery	298	161	204
Chesapeake Yards XXXV	Prince Georges	3,383	Preston	Cecil	953	1,139	883
Chesapeake Yards XXXVI	Prince Georges	3,383	Princess Anne	Allegany	1,016
Chesapeake Yards XXXVII	Prince Georges	3,383	Queen Anne	Caroline	469	353	369
Chesapeake Yards XXXVIII	Prince Georges	3,383	Queen Anne	Somerset	1,351	1,407	942
Chesapeake Yards XXXIX	Prince Georges	3,383	Queen Anne	Queen Annes
Chesapeake Yards XL	Prince Georges	3,383	Queen Anne	Talbot	283
Chesapeake Yards XLI	Prince Georges	3,383	Queen Anne	Queen Annes	355	316	..
Chesapeake Yards XLII	Prince Georges	3,383	Queen Anne	Caroline	886	834	275
Chesapeake Yards XLIII	Prince Georges	3,383	Queen Anne	Cecil	824	668	529
Chesapeake Yards XLIV	Prince Georges	3,383	Queen Anne	Prince Georges	4,389	5,530	2,330
Chesapeake Yards XLV	Prince Georges	3,383	Queen Anne	Anne Arundel	4,902	1,849	..
Chesapeake Yards XLVI	Prince Georges	3,383	Queen Anne	Kent	1,073	786	781
Chesapeake Yards XLVII	Prince Georges	3,383	Queen Anne	Montgomery	26,090	6,934	2,047
Chesapeake Yards XLVIII	Prince Georges	3,383	Queen Anne	Frederick	212
Chesapeake Yards XLIX	Prince Georges	3,383	Queen Anne	Talbot	1,484	1,470	1,309
Chesapeake Yards L	Prince Georges	3,383	Queen Anne	Wisconsin	16,302	15,141	13,313
Chesapeake Yards LI	Prince Georges	3,383	Queen Anne	Howard	1,341	1,238	..
Chesapeake Yards LII	Prince Georges	3,383	Queen Anne	West Pocomoke	5,365	2,255	1,553
Chesapeake Yards LIII	Prince Georges	3,383	Queen Anne	Dorchester	351	344	344
Chesapeake Yards LIV	Prince Georges	3,383	Queen Anne	Prince Georges	5,365	2,255	1,553
Chesapeake Yards LV	Prince Georges	3,383	Queen Anne	Prince Georges	5,365	2,255	1,553
Chesapeake Yards LVI	Prince Georges	3,383	Queen Anne	Prince Georges	5,365	2,255	1,553
Chesapeake Yards LVII	Prince Georges	3,383	Queen Anne	Prince Georges	5,365	2,255	1,553
Chesapeake Yards LVIII	Prince Georges	3,383	Queen Anne	Prince Georges	5,365	2,255	1,553
Chesapeake Yards LIX	Prince Georges	3,383	Queen Anne	Prince Georges	5,365	2,255	1,553
Chesapeake Yards LX	Prince Georges	3,383	Queen Anne	Prince Georges	5,365	2,255	1,553
Chesapeake Yards LXI	Prince Georges	3,383	Queen Anne	Prince Georges	5,365	2,255	1,553
Chesapeake Yards LXII	Prince Georges	3,383	Queen Anne	Prince Georges	5,365	2,255	1,553
Chesapeake Yards LXIII	Prince Georges	3,383	Queen Anne	Prince Georges	5,365	2,255	1,553
Chesapeake Yards LXIV	Prince Georges	3,383	Queen Anne	Prince Georges	5,365	2,255	1,553
Chesapeake Yards LXV	Prince Georges	3,383	Queen Anne	Prince Georges	5,365	2,255	1,553
Chesapeake Yards LXVI	Prince Georges	3,383	Queen Anne	Prince Georges	5,365	2,255	1,553
Chesapeake Yards LXVII	Prince Georges	3,383	Queen Anne	Prince Georges	5,365	2,255	1,553
Chesapeake Yards LXVIII	Prince Georges	3,383	Queen Anne	Prince Georges	5,365	2,255	1,553
Chesapeake Yards LXIX	Prince Georges	3,383	Queen Anne	Prince Georges	5,365	2,255	1,553
Chesapeake Yards LXX	Prince Georges	3,383	Queen Anne	Prince Georges	5,365	2,255	1,553
Chesapeake Yards LXXI	Prince Georges	3,383	Queen Anne	Prince Georges	5,365	2,255	1,553
Chesapeake Yards LXXII	Prince Georges	3,383	Queen Anne	Prince Georges	5,365	2,255	1,553
Chesapeake Yards LXXIII	Prince Georges	3,383	Queen Anne	Prince Georges	5,365	2,255	1,553
Chesapeake Yards LXXIV	Prince Georges	3,383	Queen Anne	Prince Georges	5,365	2,255	1,553
Chesapeake Yards LXXV	Prince Georges	3,383	Queen Anne	Prince Georges	5,365	2,255	1,553
Chesapeake Yards LXXVI	Prince Georges	3,383	Queen Anne	Prince Georges	5,365	2,255	1,553
Chesapeake Yards LXXVII	Prince Georges	3,383	Queen Anne	Prince Georges	5,365	2,255	1,553
Chesapeake Yards LXXVIII	Prince Georges	3,383	Queen Anne	Prince Georges	5,365	2,255	1,553
Chesapeake Yards LXXIX	Prince Georges	3,383	Queen Anne	Prince Georges	5,365	2,255	1,553
Chesapeake Yards LXXX	Prince Georges	3,383	Queen Anne	Prince Georges	5,365	2,255	1,553
Chesapeake Yards LXXXI	Prince Georges	3,383	Queen Anne	Prince Georges	5,365	2,255	1,553
Chesapeake Yards LXXXII	Prince Georges	3,383	Queen Anne	Prince Georges	5,365	2,255	1,553
Chesapeake Yards LXXXIII	Prince Georges	3,383	Queen Anne	Prince Georges	5,365	2,255	1,553
Chesapeake Yards LXXXIV	Prince Georges	3,383	Queen Anne	Prince Georges	5,365	2,255	1,553
Chesapeake Yards LXXXV	Prince Georges	3,383	Queen Anne	Prince Georges	5,365	2,255	1,553
Chesapeake Yards LXXXVI	Prince Georges	3,383	Queen Anne	Prince Georges	5,365	2,255	1,553
Chesapeake Yards LXXXVII	Prince Georges	3,383	Queen Anne	Prince Georges	5,365	2,255	1,553
Chesapeake Yards LXXXVIII	Prince Georges	3,383	Queen Anne	Prince Georges	5,365	2,255	1,553
Chesapeake Yards LXXXIX	Prince Georges	3,383	Queen Anne	Prince Georges	5,365	2,255	1,553
Chesapeake Yards LXXXX	Prince Georges	3,383	Queen Anne	Prince Georges	5,365	2,255	1,553
Chesapeake Yards LXXXXI	Prince Georges	3,383	Queen Anne	Prince Georges	5,365	2,255	1,553
Chesapeake Yards LXXXXII	Prince Georges	3,383	Queen Anne	Prince Georges	5,365	2,255	1,553
Chesapeake Yards LXXXXIII	Prince Georges	3,383	Queen Anne	Prince Georges	5,365	2,255	1,553
Chesapeake Yards LXXXXIV	Prince Georges	3,383	Queen Anne	Prince Georges	5,365	2,255	1,553
Chesapeake Yards LXXXXV	Prince Georges	3,383	Queen Anne	Prince Georges	5,365	2,255	1,553
Chesapeake Yards LXXXXVI	Prince Georges	3,383	Queen Anne	Prince Georges	5,365	2,255	1,553
Chesapeake Yards LXXXXVII	Prince Georges	3,383					

Table 8.—POPULATION OF ALL INCORPORATED PLACES AND OF UNINCORPORATED PLACES OF 1,000 OR MORE: 1940 TO 1960—Con.

["U" denotes an unincorporated place. Asterisk (*) denotes an incorporated place under 2,500 located in an urbanized area]

Place	County	1960	1950	1940	Place	County	1960	1950	1940
Solomons.....	Calvert.....	183	270	266	Union Bridge.....	Carroll.....	833	640	831
Somerset*.....	Montgomery.....	1,444	430	399	University Park.....	Prince Georges.....	3,098	2,205	878
Sparrows Point-Fort Howard-Edgemere (U).....	Baltimore.....	11,775	Upper Marlboro.....	Prince Georges.....	673	702	565
Stoneleigh-Rodgers Forge (U).....	Baltimore.....	15,645	Waldorf (U).....	Dorchester.....	420	414	385
Sudlersville.....	Queen Annes.....	394	347	292	Walkersville.....	Frederick.....	1,020	761	731
Suitland-Silver Hill (U).....	Prince Georges.....	10,300	Washington Grove.....	Montgomery.....	576	400	160
Sykesville.....	Carroll.....	1,196	941	806	Westersport.....	Allegheny.....	3,559	3,431	3,565
Takoma Park.....	Montgomery.....	16,799	13,341	8,938	Westminster.....	Carroll.....	6,123	6,140	4,692
Taneytown.....	Prince Georges.....	1,519	1,420	1,208	Wheaton (U).....	Montgomery.....	54,635
Templeville.....	Carroll.....	98	82	...	Willards.....	Wicomico.....	531	464	285
Thurmont.....	Queen Annes.....	1,998	1,676	1,307	Williamsport.....	Washington.....	1,893	1,890	1,772
Timonium-Lutherville (U).....	Frederick.....	12,265	Woodland Beach (U).....	Anne Arundel.....	1,855
Towson (U).....	Baltimore.....	19,096	Woodlawn-Rosedale-Millford Mills (U).....	Baltimore.....	19,254
Trappe.....	Baltimore.....	358	325	296	Woodsboro.....	Frederick.....	430	427	416
	Talbot.....								

Table 9.—1960 POPULATION OF AREAS ANNEXED BETWEEN 1950 AND 1960 BY INCORPORATED PLACES HAVING 2,500 INHABITANTS OR MORE IN 1950

[Minus sign (-) denotes decrease]

Incorporated place	1960 population			1950 population, total	Increase, 1950 to 1960, in 1950 area	Incorporated place	1960 population			1950 population, total	Increase, 1950 to 1960, in 1950 area
	Total	In 1950 area	In annexed area				Total	In 1950 area	In annexed area		
Aberdeen.....	9,679	4,417	5,262	2,944	1,473	Frostburg.....	6,722	6,722	...	6,876	-154
Annapolis.....	23,385	8,752	14,633	10,047	-1,295	Hagerstown.....	36,660	36,527	133	36,260	267
Bel Air.....	4,300	3,180	1,120	2,578	602	Hyattsville.....	15,166	14,682	486	12,308	2,374
Bladensburg.....	3,103	3,073	30	2,899	174	Laurel.....	8,503	6,590	1,913	4,482	2,068
Brunswick.....	3,555	2,352	1,203	3,752	-1,400	Mount Rainier.....	9,835	9,832	23	10,989	-1,157
Cambridge.....	12,239	10,654	1,585	10,351	303	Pocomoke city.....	3,329	3,088	241	3,191	-103
Capitol Heights.....	3,138	3,138	...	2,729	409	Riverdale.....	4,389	4,389	...	5,530	-1,141
Chester town.....	3,602	3,374	228	3,143	231	Rockville.....	26,090	21,411	4,679	6,934	14,477
Cheverly.....	5,223	4,843	380	3,318	1,525	Salisbury.....	16,302	16,300	2	15,141	1,159
College Park.....	18,482	17,259	1,223	11,170	6,089	Takoma Park.....	16,799	16,799	...	13,341	3,458
Easton.....	6,337	4,494	1,843	4,836	-342	Westersport.....	3,559	3,440	119	3,431	9
Frederick.....	21,744	21,475	269	18,142	3,333						

Table 10.—POPULATION OF URBANIZED AREAS: 1960 AND 1950

[Districts shown here are election districts]

Area	1960	1950	Area	1960	1950
BALTIMORE (MD.) URBANIZED AREA			WASHINGTON (D.C.-MD.-VA.) URBANIZED AREA--Con.		
The area.....	1,418,928	1,161,852	Montgomery County (part)--Con.	83,197	42,567
Baltimore city.....	929,024	849,708	District 7, Bethesda.....	56,527	(2)
Outside central city.....	479,924	212,144	Bethesda (U).....	2,405	1,971
The area includes Baltimore city and the following minor civil divisions and parts of minor civil divisions:			Chevy Chase Village.....	2,243	(4)
Anne Arundel County (part).....	65,776	22,791	Chevy Chase Section Four Village.....	310	356
District 3 (part).....	13,798	4,416	Clan Echo town.....	1,444	430
District 4 (part).....	3,659	(1)	Summerseat town.....	539	158
District 5 (part).....	47,921	18,975	District 10, Potomac (part).....	159,631	74,241
Baltimore County (part).....	408,806	138,081	District 13, Wheaton (part).....	2,175	1,611
District 1 (part).....	49,717	23,299	Wheaton town.....
Arbutus-Halethorpe-Beloy (U) (part).....	69	(2)	Rockville city (part).....	66,348	(3)
Croftonville (U).....	37,972	(2)	Silver Spring (U).....	11,542	9,391
Woodlawn-Bonkale-Wilford Mills (U) (part).....	1,315	(2)	Yakoma Park city (part).....	54,635	(2)
District 2 (part).....	19,116	2,032	Wheaton (U).....	289,440	135,886
Woodlawn-Bonkale-Wilford Mills (U) (part).....	15,739	(2)	Prince Georges County (part).....	979	979
District 3 (part).....	21,385	7,173	District 1, Vanover (part).....	5,223	(1)
Blanesville (U).....	18,737	(2)	College Park city (part).....	1,218	(1)
District 8 (part).....	11,900	1,897	District 2, Bladensburg.....	31,033	17,294
Tanandium-Luthersville (U) (part).....	8,799	(2)	Bladensburg town.....	3,103	2,899
District 9 (part).....	82,718	39,226	Cheverly town.....	4,911	3,117
Loth Haven (U).....	23,278	(2)	Colmar Manor town.....	1,772	1,732
Parkville-Carney (U) (part).....	17,496	(2)	College City town.....	1,099	1,249
Stonedeigh-Rodgers Forge (U).....	15,645	(2)	Hampton town (part).....	1,850	1,661
Tanandium-Luthersville (U) (part).....	3,486	(2)	Lansdown Hills town.....	50,924	15,733
Towson (U).....	19,090	(2)	District 6, Spauldings (part).....	7,524	1,735
District 11 (part).....	7,299	64	District Heights town.....	13,885	(2)
Parkville-Carney (U) (part).....	3,435	(2)	Hillcrest Heights (U) (part).....	1,708	1,520
District 12.....	79,699	39,354	Wardlands town.....	10,300	(2)
Dundalk (U) (part).....	70,639	(2)	Zutland-Silver Hill (U).....	1,256	2,484
District 13 (part).....	25,499	17,113	District 9, Surratts (part).....	19,445	1,125
Arbutus-Halethorpe-Beloy (U) (part).....	22,093	(2)	District 12, Open Hill (part).....	3,524	(2)
Lanham-Baltimore Highlands (U).....	13,134	(2)	Forest Heights town.....	1,410	2,466
District 14 (part).....	27,340	12,759	Hillcrest Heights (U) (part).....	12,558	881
Geovias (U).....	10,795	(2)	District 13, Kent (part).....	1,262	16,002
Parkville-Carney (U) (part).....	6,285	(2)	District 14, Bowie (part).....	16,002	1,190
District 15 (part).....	23,272	32,080	District 16, Hyattsville.....	1,197	12,308
Dundalk (U) (part).....	11,769	(2)	Shawmut town (part).....	14,546	68,547
Towson (U).....	35,225	(2)	Brentwood town.....	3,693	3,521
Middle River (U).....	18,321	(2)	Hyattsville city (part).....	622	(1)
Sperryville Point-Port Howard-Biggsboro (U).....	11,775	(2)	Langley Park (U).....	11,510	(2)
Baltimore city.....	929,024	849,708	Mount Rainier city.....	9,855	10,989
Howard County (part).....	5,742	1,302	North Brentwood town.....	864	833
District 1, Elk Ridge (part).....	2,303	1,302	Takoma Park city (part).....	5,254	3,950
District 2, Elliott city (part).....	3,239	(1)	District 18, Seat Pleasant (part).....	25,181	15,592
WASHINGTON (D.C.-MD.-VA.) URBANIZED AREA¹			Capital Heights town.....	3,138	2,729
That part of the area in Maryland.....	578,980	253,423	Cheverly town (part).....	312	201
The area includes the following minor civil divisions and parts of minor civil divisions:			Fairmount Heights town.....	2,308	2,097
Montgomery County (part).....	226,540	117,377	Seat Pleasant town.....	5,365	2,255
District 4, Rockville (part).....	34,268	571	District 19, Riverdale.....	15,895	12,148
Garrett Park town.....	963	524	Carrollton city (part).....	...	(5)
Rockville city (part).....	26,090	(1)	College Park city (part).....
District 5, Colmarville (part).....	11,909	(1)	Edmonston town (part).....
			Riverdale town.....	4,389	5,530
			University Park town (part).....	3,091	2,205
			District 23, Lanham (part).....	11,761	1,020
			Carrollton city (part).....	3,385	(5)
			Glenarden town (part).....	455	(1)
			District 21, Berwyn (part).....	30,353	18,941
			Berwyn Heights town.....	2,376	674
			College Park city (part).....	17,264	11,170
			Greenbelt city.....	7,479	7,074
			University Park town (part).....	7	...

¹ Not in area in 1950.

² No unincorporated pieces delineated in urbanized areas in 1950.

³ For the map and population of the entire Washington (D.C.-MD.-Va.) Urbanized Area, see corresponding report for the District of Columbia.

⁴ Not returned separately in 1950.

⁵ Incorporated since 1950.

Table 11.—POPULATION OF STANDARD METROPOLITAN STATISTICAL AREAS: 1960 AND 1950

[Data relate to areas as defined for 1960. Minus sign (-) denotes decrease.]

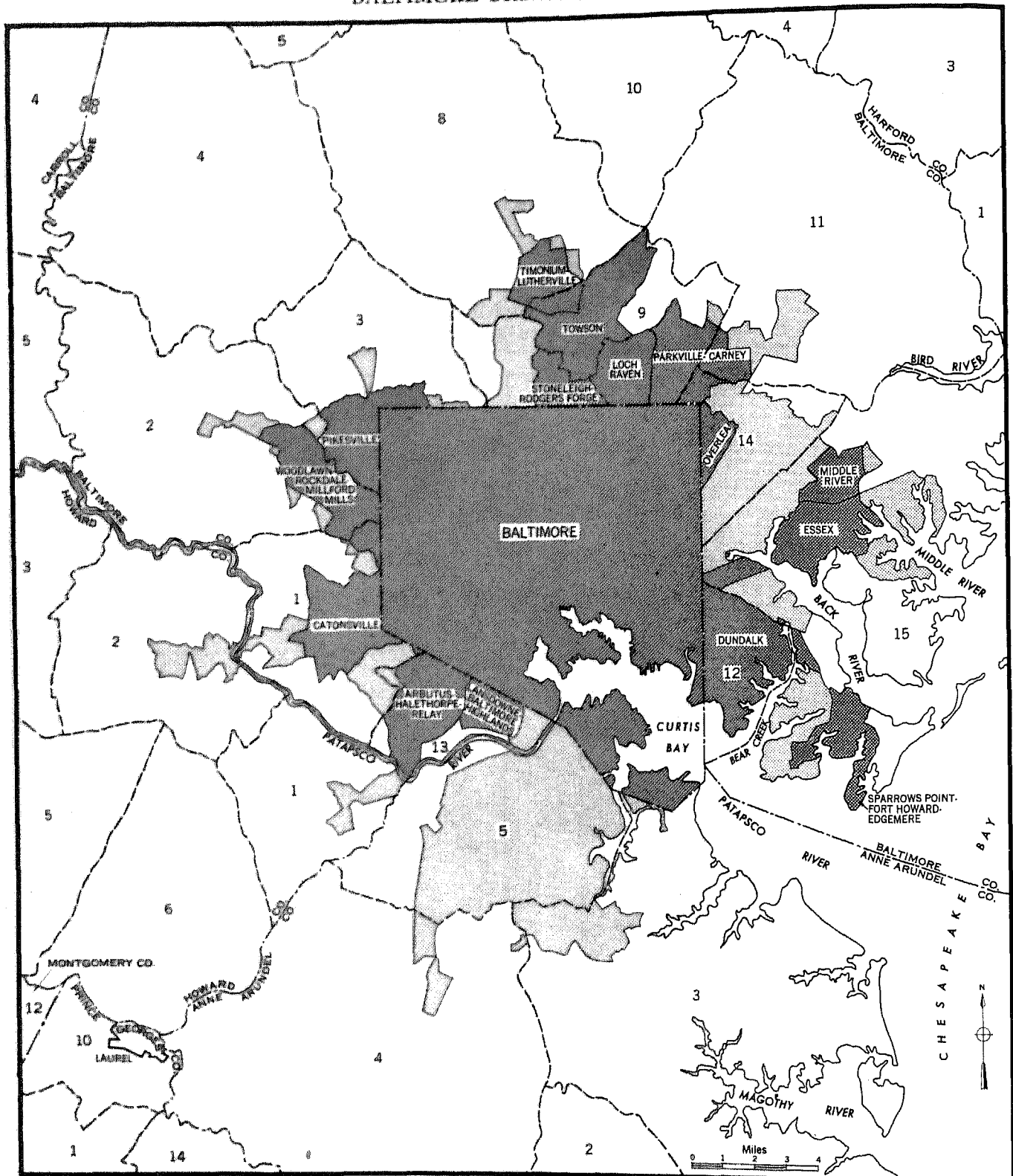
Standard metropolitan statistical area, central city, and other component areas	1960	1950	Increase		Standard metropolitan statistical area, central city, and other component areas	1960	1950	Increase	
			Number	Percent				Number	Percent
BALTIMORE, MD.					WASHINGTON, D.C.-MD.-VA. (PART)				
Total.....	1,727,023	1,405,399	321,624	22.9	Total.....	698,323	358,983	339,340	94.7
Baltimore city.....	939,024	949,708	-10,684	-1.1	Montgomery County, Md.....	340,928	164,401	176,527	107.4
Outside central city.....	787,999	455,691	332,308	72.9	Prince Georges, Md.....	357,395	194,582	163,213	84.1
Baltimore city.....	939,024	949,708	-10,684	-1.1					
Anne Arundel County.....	206,634	117,342	89,292	76.0					
Baltimore County.....	492,428	270,273	222,155	82.2					
Carroll County.....	52,785	44,907	7,878	17.5					
Howard County.....	36,152	23,119	13,033	56.4					

Table 12.—POPULATION OF THE STATE AND OF STANDARD METROPOLITAN STATISTICAL AREAS, BY TYPE OF RESIDENCE: 1960

Metropolitan-nonmetropolitan residence	Total	Urban			Rural		
		Total	Central city or cities	Other urban territory	Total	Places of 1,000 to 2,500	Other rural territory
The State.....	3,100,689	2,293,832	939,024	1,314,808	846,857	63,355	783,502
In standard metropolitan statistical areas.....	2,425,346	2,059,024	939,024	1,120,000	366,322	17,404	348,918
Baltimore, Md.....	1,727,023	1,467,694	939,024	528,670	299,329	14,337	244,992
Washington, D.C.-Md.-Va. ¹	698,323	591,330	...	591,330	106,993	3,067	103,926
Not in standard metropolitan statistical areas.....	675,343	194,808	...	194,808	480,535	45,951	434,584

¹ Part in State only; for entire area, see table 11 of the corresponding report for the District of Columbia or table 31 of the U.S. Summary.

BALTIMORE URBANIZED AREA



COMPONENTS OF URBANIZED AREA		BOUNDARY SYMBOLS	
	Incorporated Places		State Line
	Unincorporated Urban Places		County Line
	Other Unincorporated Area		Minor Civil Division Line

Maps showing boundaries in detail are available at cost on request to the Bureau of the Census.