

Number of Inhabitants

A



NUMBER OF INHABITANTS

Georgia

LIST OF TABLES

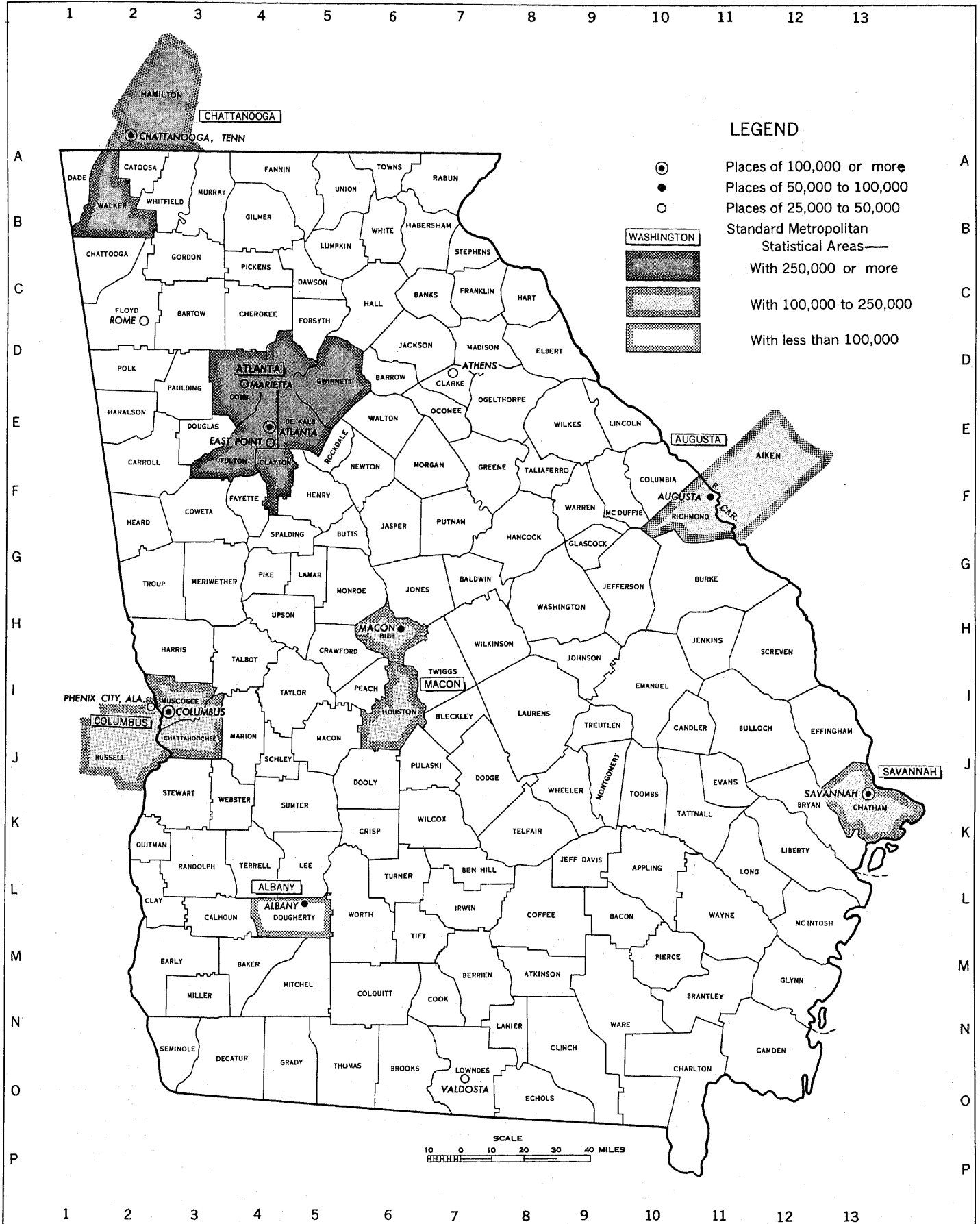
[Page numbers listed here omit the State prefix number which appears as part of the page number for each page. The prefix for this State is 12]

Table	Page
1.—Population of the State, urban and rural: 1790 to 1960.....	9
2.—Population in groups of places according to size: 1960 and 1950.....	9
3.—Population in groups of places according to size: 1900 to 1960.....	10
4.—Population in incorporated and unincorporated places according to size: 1960.....	11
5.—Population of incorporated places of 10,000 or more from earliest census to 1960.....	11
6.—Area and population of counties, urban and rural: 1960 and 1950.....	13
7.—Population of counties, by census county divisions: 1960.....	15
8.—Population of all incorporated places and of unincorporated places of 1,000 or more: 1940 to 1960.....	20
9.—1960 population of areas annexed between 1950 and 1960 by incorporated places having 2,500 inhabitants or more in 1950.....	23
10.—Population of urbanized areas: 1960 and 1950.....	24
11.—Population of standard metropolitan statistical areas: 1960 and 1950.....	25
12.—Population of the State and of standard metropolitan statistical areas, by type of residence: 1960.....	25

LIST OF MAPS

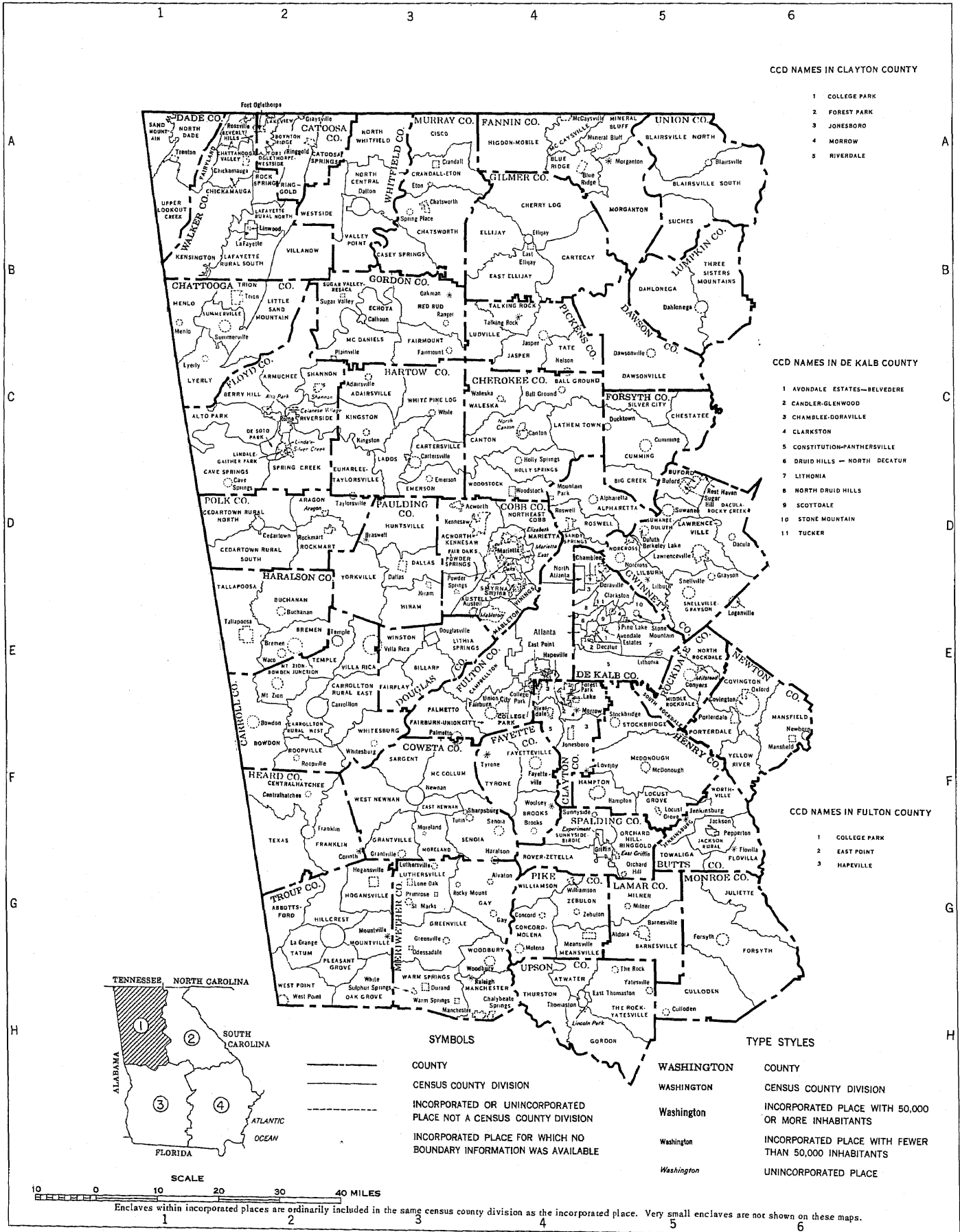
The State, showing counties, places of 25,000 or more, and standard metropolitan statistical areas.....	3
The State, showing census county divisions.....	4
Urbanized areas (separate map for each area).....	26

GEORGIA— COUNTIES, PLACES OF 25,000 OR MORE, AND STANDARD METROPOLITAN STATISTICAL AREAS



GEORGIA—SECTION 1

CENSUS COUNTY DIVISIONS



CCD NAMES IN CLAYTON COUNTY

- 1 COLLEGE PARK
- 2 FOREST PARK
- 3 JONESBORO
- 4 MORROW
- 5 RIVERDALE

CCD NAMES IN DE KALB COUNTY

- 1 AVONDALE ESTATES—BELVEDERE
- 2 CANDLER-GLENWOOD
- 3 CHAMBLEE-DORAVILLE
- 4 CLARKSTON
- 5 CONSTITUTION—PANTHERSVILLE
- 6 DRUID HILLS — NORTH DECATUR
- 7 LITHONIA
- 8 NORTH DRUID HILLS
- 9 SCOTSDALE
- 10 STONE MOUNTAIN
- 11 TUCKER

CCD NAMES IN FULTON COUNTY

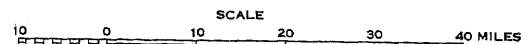
- 1 COLLEGE PARK
- 2 EAST POINT
- 3 HAPEVILLE

SYMBOLS

- COUNTY
- CENSUS COUNTY DIVISION
- INCORPORATED OR UNINCORPORATED PLACE NOT A CENSUS COUNTY DIVISION
- INCORPORATED PLACE FOR WHICH NO BOUNDARY INFORMATION WAS AVAILABLE

TYPE STYLES

- WASHINGTON** COUNTY
- WASHINGTON COUNTY
- Washington INCORPORATED PLACE WITH 50,000 OR MORE INHABITANTS
- Washington INCORPORATED PLACE WITH FEWER THAN 50,000 INHABITANTS
- Washington UNINCORPORATED PLACE



Enclaves within incorporated places are ordinarily included in the same census county division as the incorporated place. Very small enclaves are not shown on these maps.

GEORGIA—SECTION 2 CENSUS COUNTY DIVISIONS

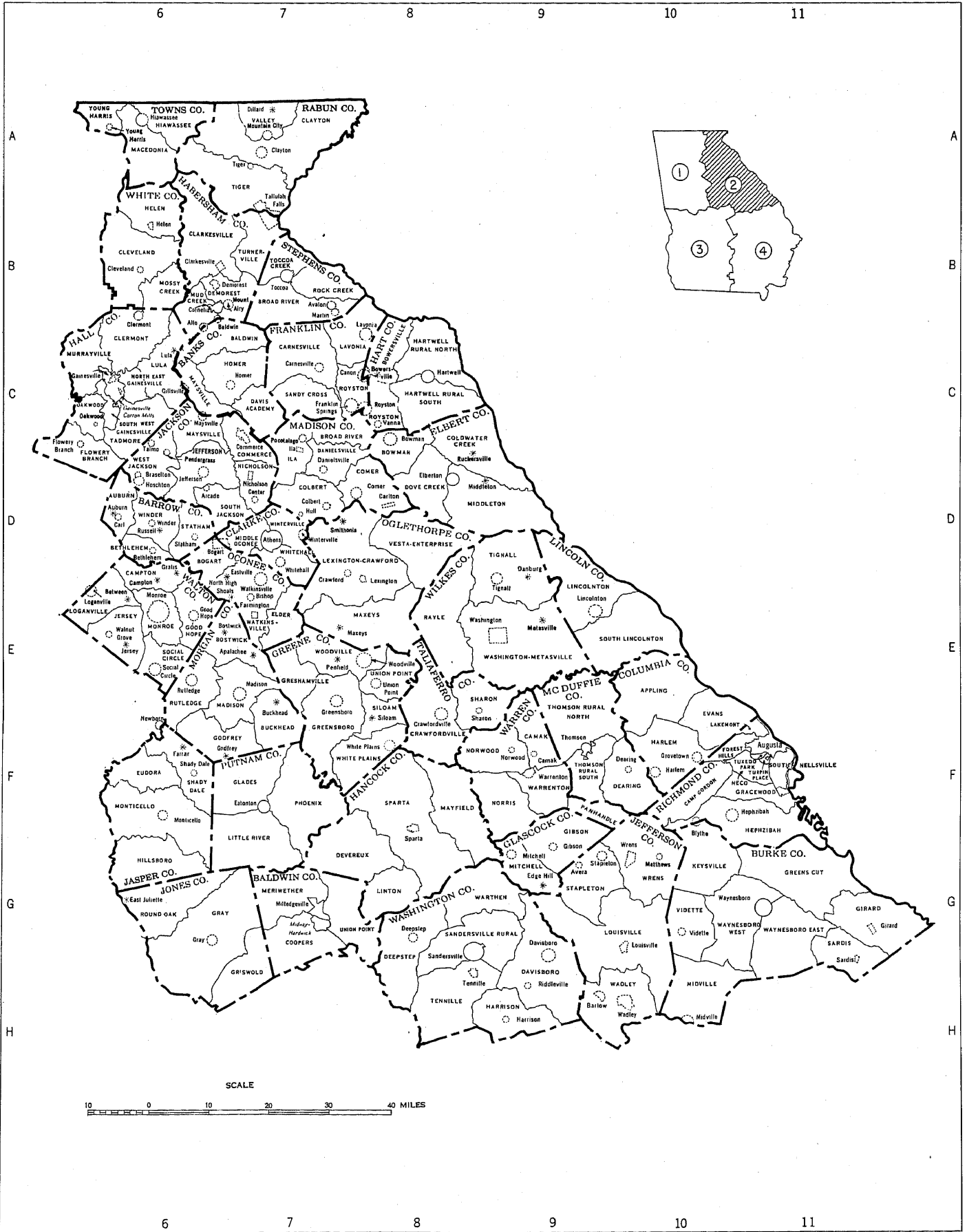


Table 1.—POPULATION OF THE STATE, URBAN AND RURAL: 1790 TO 1960

[For description of current and previous urban definitions, see text. Minus sign (-) denotes decrease]

Census date	The State			Urban territory				Rural territory			Percent of total	
	Population	Increase over preceding census		Number of urban places	Population	Increase over preceding census		Population	Increase over preceding census		Urban	Rural
		Number	Percent			Number	Percent		Number	Percent		
Current urban definition:												
1960 (Apr. 1)	1,394,316	498,538	14.5	124	2,180,236	620,789	39.8	1,762,880	-122,251	-6.5	55.3	44.7
1950 (Apr. 1)	3,444,578	320,855	10.3	106	1,559,447	1,885,131	45.3	54.7
Previous urban definition:												
1960 (Apr. 1)	1,394,316	498,538	14.5	120	1,963,012	536,806	37.6	1,980,104	-38,268	-1.9	49.8	50.2
1950 (Apr. 1)	3,444,578	320,855	10.3	103	1,426,206	352,398	32.8	2,018,372	-31,543	-1.5	41.4	58.6
1940 (Apr. 1)	3,123,723	215,217	7.4	78	1,073,808	178,316	19.9	2,049,915	36,901	1.8	34.4	65.6
1930 (Apr. 1)	2,908,506	12,674	0.4	64	895,492	167,633	23.0	2,013,014	-154,959	-7.1	30.8	69.2
1920 (Jan. 1)	2,895,832	286,711	11.0	59	727,859	189,209	35.1	2,167,973	97,502	4.7	25.1	74.9
1910 (Apr. 15)	2,609,121	392,790	17.7	45	538,650	192,268	55.5	2,070,471	200,522	10.7	20.6	79.4
1900 (June 1)	2,216,331	378,978	20.6	31	346,382	88,910	34.5	1,869,949	290,068	18.4	15.6	84.4
1890 (June 1)	1,837,353	295,173	19.1	22	257,472	112,382	77.5	1,579,881	182,791	13.1	14.0	86.0
1880 (June 1)	1,542,180	358,071	30.2	14	145,090	45,037	45.0	1,397,090	313,034	28.9	9.4	90.6
1870 (June 1)	1,184,109	126,823	12.0	10	100,053	24,587	32.6	1,084,056	102,236	10.4	8.4	91.6
1860 (June 1)	1,057,286	151,101	16.7	9	75,466	36,472	93.5	981,820	114,629	13.2	7.1	92.9
1850 (June 1)	906,185	214,793	31.1	5	38,994	14,336	58.1	867,191	200,457	30.1	4.3	95.7
1840 (June 1)	691,392	174,569	33.8	4	24,658	10,645	76.0	666,734	163,924	32.6	3.6	96.4
1830 (June 1)	516,823	175,834	51.6	2	14,013	6,490	86.3	502,810	169,344	50.8	2.7	97.3
1820 (Aug. 7)	340,989	88,556	35.1	1	7,523	2,308	44.3	333,466	86,248	34.9	2.2	97.8
1810 (Aug. 6)	252,433	89,747	55.2	1	5,215	69	1.3	247,218	89,678	56.9	2.1	97.9
1800 (Aug. 4)	162,686	80,138	97.1	1	5,146	5,146	...	157,540	74,992	90.8	3.2	96.8
1790 (Aug. 2)	82,548	82,548	100.0

¹ Barwell Island, Beaufort County, S.C., ceded to Chatham County, Ga., by Federal action in 1958.
² Includes 279,723 persons in urban territory outside urban places.
³ Includes 167,338 persons in urban territory outside urban places.
⁴ Revised since publication of 1950 reports.
⁵ Includes population of areas now in Alabama and Mississippi.
⁶ No population returned for that part of Georgia now in Alabama and Mississippi.

Table 2.—POPULATION IN GROUPS OF PLACES ACCORDING TO SIZE: 1960 AND 1950

[Percent not shown where less than 0.1]

Type of area and size of place	1960				1950			
	Number of places	Population	Percent of total population	Percent of total	Number of places	Population	Percent of total population	Percent of total
The State	...	3,943,116	100.0	3,444,578	100.0	...
URBAN								
Total	(¹)	2,180,236	55.3	100.0	(²)	1,559,447	45.3	100.0
Within urbanized areas	...	1,372,447	34.8	62.9	...	918,738	26.7	58.9
Central cities, total	6	949,759	24.1	43.6	5	672,323	19.5	43.1
Cities of 1,000,000 or more
Cities of 500,000 to 1,000,000
Cities of 250,000 to 500,000	1	487,455	12.4	22.4	1	331,314	9.6	21.2
Cities of 100,000 to 250,000	2	266,024	6.7	12.2	1	119,638	3.5	7.7
Cities of 50,000 to 100,000	3	196,280	5.0	9.0	3	221,371	6.4	14.2
Cities under 50,000
Urban fringes, total	...	422,688	10.7	19.4	...	246,415	7.2	15.8
Places of 2,500 or more	11	142,965	3.6	6.6	7	79,077	2.3	5.1
Places of 100,000 or more
Places of 50,000 to 100,000
Places of 25,000 to 50,000	1	35,633	0.9	1.6
Places of 10,000 to 25,000	5	82,439	2.1	3.8	3	57,250	1.7	3.7
Places of 5,000 to 10,000	2	12,086	0.3	0.6	2	14,490	0.4	0.9
Places of 2,500 to 5,000	3	12,807	0.3	0.6	2	7,337	0.2	0.5
Places under 2,500	7	10,510	0.3	0.5	7	7,474	0.2	0.5
Places of 2,000 to 2,500	1	2,251	0.1	0.1
Places of 1,500 to 2,000	4	6,700	0.2	0.3	1	1,557	...	0.1
Places of 1,000 to 1,500	1	1,213	...	0.1	4	4,925	0.1	0.3
Places under 1,000	1	346	2	992	...	0.1
Other urban territory	...	269,213	6.8	12.3	...	159,864	4.6	10.3
Outside urbanized areas	107	807,789	20.5	37.1	94	640,709	18.6	41.1
Places of 25,000 or more	4	119,798	3.0	5.5	4	113,975	3.3	7.3
Places of 10,000 to 25,000	18	286,982	7.3	13.2	12	181,930	5.3	11.7
Places of 5,000 to 10,000	27	192,799	4.9	8.8	19	138,583	4.0	8.9
Places of 2,500 to 5,000	58	208,210	5.3	9.5	59	206,221	6.0	13.2
RURAL								
Total	...	1,762,880	44.7	100.0	...	1,885,131	54.7	100.0
Places of 1,000 to 2,500	115	179,921	4.6	10.2	110	168,784	4.9	8.9
Places of 2,000 to 2,500	21	47,603	1.2	2.7	16	34,816	1.0	1.8
Places of 1,500 to 2,000	35	59,795	1.5	3.4	38	65,290	1.9	3.5
Places of 1,000 to 1,500	59	72,523	1.8	4.1	56	68,678	2.0	3.6
Other rural territory	...	1,582,959	40.1	89.8	...	1,716,347	49.8	91.0
URBANIZED AREAS								
Total	7	1,372,447	34.8	100.0	6	918,738	26.7	100.0
Areas of 1,000,000 or more
Areas of 500,000 to 1,000,000	1	768,125	19.5	56.0	1	507,887	14.7	55.3
Areas of 250,000 to 500,000
Areas of 100,000 to 250,000	5	545,969	13.8	39.8	3	233,278	6.8	25.4
Areas under 100,000	1	58,333	1.5	4.3	2	177,573	5.2	19.3

¹ There were 124 places of 2,500 or more.
² There were 106 places of 2,500 or more.

Table 3.—POPULATION IN GROUPS OF PLACES ACCORDING TO SIZE: 1900 TO 1960

Subject and size of place	1960		1950		1940	1930	1920	1910	1900
	Current urban definition	Previous urban definition	Current urban definition	Previous urban definition ¹					
NUMBER OF PLACES									
Urban territory	131	120	113	103	78	64	59	45	31
Places of 2,500 or more	124	120	106	103	78	64	59	45	31
Places of 1,000,000 or more
Places of 500,000 to 1,000,000
Places of 250,000 to 500,000	1	1	1	1	1	1	1	1	1
Places of 100,000 to 250,000	2	2	3	3	4	3	3	3	2
Places of 50,000 to 100,000	3	3	4	3	4	3	3	2	1
Places of 25,000 to 50,000	5	6	5	5	1	1	1	2	1
Places of 10,000 to 25,000	23	27	15	16	14	10	7	5	3
Places of 5,000 to 10,000	29	26	21	21	19	16	14	14	7
Places of 2,500 to 5,000	61	55	61	56	39	33	33	22	18
Places under 2,500	7	...	7
Rural territory	482	478	498	484	513	529	516	516	344
Places of 1,000 to 2,500	115	110	110	94	94	91	87	85	56
Places under 1,000	367	368	388	390	419	438	429	431	288
Cumulative summary:									
Places of 1,000,000 or more
Places of 500,000 or more
Places of 250,000 or more	1	1	1	1	1	1	1	1	1
Places of 100,000 or more	3	3	2	2	1	1	1	1	...
Places of 50,000 or more	6	6	5	5	5	4	4	2	2
Places of 25,000 or more	11	12	9	10	6	5	5	4	3
Places of 10,000 or more	34	39	24	26	20	15	12	9	6
Places of 5,000 or more	63	65	45	47	39	31	26	23	13
Places of 2,500 or more	124	120	106	103	78	64	59	45	31
POPULATION									
Urban territory	2,180,236	1,963,012	1,559,447	1,426,206	1,073,808	895,492	727,859	538,650	346,382
Places of 2,500 or more	1,900,513	1,963,012	1,392,109	1,426,206	1,073,808	895,492	727,859	538,650	346,382
Places of 1,000,000 or more
Places of 500,000 to 1,000,000
Places of 250,000 to 500,000	487,455	487,455	331,314	331,314	302,288	270,366
Places of 100,000 to 250,000	266,024	266,024	119,638	119,638	200,616	154,839	...
Places of 50,000 to 100,000	196,280	196,280	221,371	221,371	273,060	199,195	188,795	65,064	144,116
Places of 25,000 to 50,000	155,431	180,452	113,975	140,769	26,282	43,131	31,125	81,705	39,441
Places of 10,000 to 25,000	369,421	447,611	239,180	264,043	206,943	153,017	101,857	72,233	51,131
Places of 5,000 to 10,000	204,885	184,372	153,073	153,073	129,552	113,785	95,937	90,403	47,757
Places of 2,500 to 5,000	221,017	200,818	213,598	195,998	135,683	115,998	109,529	74,406	63,937
Places under 2,500	10,510	...	7,474
Other urban territory	269,213	...	159,864
Rural territory	1,762,880	1,980,104	1,885,131	2,018,372	2,049,915	2,013,014	2,167,973	2,070,471	1,869,949
Places of 1,000 to 2,500	179,921	171,574	168,784	144,635	146,357	143,903	133,726	131,865	83,190
Places under 1,000	125,967	126,313	138,590	139,582	148,830	155,841	163,069	153,938	110,490
Other rural territory	1,456,992	1,682,217	1,577,757	1,734,155	1,754,728	1,713,270	1,871,178	1,784,668	1,676,269
Cumulative summary:									
Places of 1,000,000 or more
Places of 500,000 or more
Places of 250,000 or more	487,455	487,455	331,314	331,314	302,288	270,366
Places of 100,000 or more	753,479	753,479	450,952	450,952	302,288	270,366	200,616	154,839	...
Places of 50,000 or more	949,759	949,759	672,323	672,323	575,348	469,561	389,411	219,903	144,116
Places of 25,000 or more	1,103,190	1,130,211	786,298	813,092	601,630	512,692	420,536	301,608	183,557
Places of 10,000 or more	1,474,611	1,577,822	1,025,478	1,077,135	808,573	665,709	522,393	373,841	234,688
Places of 5,000 or more	1,679,496	1,762,194	1,178,551	1,230,208	938,125	779,494	618,330	464,244	282,445
Places of 2,500 or more	1,900,513	1,963,012	1,392,109	1,426,206	1,073,808	895,492	727,859	538,650	346,382
PERCENT OF TOTAL POPULATION									
Urban territory	55.3	49.8	45.3	41.4	34.4	30.8	25.1	20.6	15.6
Places of 2,500 or more	48.2	49.8	40.4	41.4	34.4	30.8	25.1	20.6	15.6
Places of 1,000,000 or more
Places of 500,000 to 1,000,000
Places of 250,000 to 500,000	12.4	12.4	9.6	9.6	9.7	9.3
Places of 100,000 to 250,000	6.7	6.7	3.5	3.5	6.9	5.9	...
Places of 50,000 to 100,000	5.0	5.0	6.4	6.4	8.7	6.8	6.5	2.5	6.5
Places of 25,000 to 50,000	3.9	4.6	3.3	4.1	0.8	1.5	1.1	3.1	1.8
Places of 10,000 to 25,000	9.4	11.4	6.9	7.7	6.6	5.3	3.5	2.8	2.3
Places of 5,000 to 10,000	5.2	4.7	4.4	4.4	4.1	3.9	3.3	3.5	2.2
Places of 2,500 to 5,000	5.6	5.1	6.2	5.7	4.3	4.0	3.8	2.9	2.9
Places under 2,500	0.3	...	0.2
Other urban territory	6.8	...	4.6
Rural territory	44.7	50.2	54.7	58.6	65.6	69.2	74.9	79.4	84.4
Places of 1,000 to 2,500	4.6	4.4	4.9	4.2	4.7	4.9	4.6	5.1	3.8
Places under 1,000	3.2	3.2	4.0	4.1	4.8	5.4	5.6	5.9	5.0
Other rural territory	37.0	42.7	45.8	50.3	56.2	58.9	64.6	68.4	75.6
Cumulative summary:									
Places of 1,000,000 or more
Places of 500,000 or more
Places of 250,000 or more	12.4	12.4	9.6	9.6	9.7	9.3
Places of 100,000 or more	19.1	19.1	13.1	13.1	9.7	9.3	6.9	5.9	...
Places of 50,000 or more	24.1	24.1	19.5	19.5	18.4	16.1	13.4	8.4	6.5
Places of 25,000 or more	28.0	28.7	22.8	23.6	19.3	17.6	14.5	11.6	8.3
Places of 10,000 or more	37.4	40.0	29.8	31.3	25.9	22.9	18.0	14.3	10.6
Places of 5,000 or more	42.6	44.7	34.2	35.7	30.0	26.8	21.4	17.8	12.7
Places of 2,500 or more	48.2	49.8	40.4	41.4	34.4	30.8	25.1	20.6	15.6

¹ Revised since publication of 1950 reports.

Table 4.—POPULATION IN INCORPORATED AND UNINCORPORATED PLACES ACCORDING TO SIZE: 1960

Size of place and urban-rural classification	All places		Incorporated places		Unincorporated places		Size of place and urban-rural classification	All places		Incorporated places		Unincorporated places	
	Number	Population	Number	Population	Number	Population		Number	Population	Number	Population	Number	Population
Total	613	2,216,911	592	2,140,779	21	76,132							
500,000 or more	1	487,455	1	487,455	5,000 to 10,000	2	12,086	2	12,086
250,000 to 500,000	2	266,024	2	266,024	2,500 to 5,000	3	12,807	3	12,807
100,000 to 250,000	3	196,280	3	196,280	2,000 to 2,500	1	2,251	1	2,251
50,000 to 100,000	5	155,431	5	155,431	1,500 to 2,000	4	6,700	4	6,700
25,000 to 50,000	6	133,509	6	133,509	1,000 to 1,500	1	1,213	1	1,213
20,000 to 25,000	17	235,912	16	219,003	1	16,909	500 to 1,000
10,000 to 20,000	29	204,885	26	184,372	3	20,513	200 to 500	1	346	1	346
5,000 to 10,000	61	221,017	55	200,818	6	20,199	Under 200
2,500 to 5,000	22	49,854	20	45,320	2	4,534							
2,000 to 2,500	39	66,495	32	54,588	7	11,907	Other urban territory	107	807,789	97	750,168	10	57,621
1,500 to 2,000	60	73,736	58	71,666	2	2,070	25,000 to 50,000	4	119,798	4	119,798
1,000 to 1,500	90	61,906	90	61,906	20,000 to 25,000	4	88,014	4	88,014
500 to 1,000	154	49,814	154	49,814	10,000 to 20,000	14	198,968	13	182,059	1	16,909
200 to 500	124	14,593	124	14,593	5,000 to 10,000	27	192,799	24	172,286	3	20,513
Under 200	2,500 to 5,000	58	208,210	52	188,011	6	20,199
In urbanized areas	24	1,103,234	24	1,103,234	Rural territory	482	305,888	471	287,377	11	18,511
500,000 or more	1	487,455	1	487,455	2,000 to 2,500	21	47,603	19	43,069	2	4,534
250,000 to 500,000	2	266,024	2	266,024	1,500 to 2,000	35	59,795	28	47,888	7	11,907
100,000 to 250,000	3	196,280	3	196,280	1,000 to 1,500	59	72,523	57	70,453	2	2,070
50,000 to 100,000	1	35,633	1	35,633	500 to 1,000	90	61,906	90	61,906
25,000 to 50,000	2	45,495	2	45,495	200 to 500	153	49,468	153	49,468
20,000 to 25,000	3	36,944	3	36,944	Under 200	124	14,593	124	14,593
10,000 to 20,000							

Table 5.—POPULATION OF INCORPORATED PLACES OF 10,000 OR MORE FROM EARLIEST CENSUS TO 1960

[Minus sign (-) denotes decrease]

Incorporated place and census year	Population	Increase over preceding census		Incorporated place and census year	Population	Increase over preceding census		Incorporated place and census year	Population	Increase over preceding census	
		Number	Percent			Number	Percent			Number	Percent
ALBANY:				AUGUSTA--Con.				COLLEGE PARK--Con.			
1960	55,890	24,735	79.4	1920	52,548	11,508	28.0	1930	6,604	2,982	82.3
1950	31,155	12,100	63.5	1910	41,040	1,599	4.1	1920	3,622	1,449	66.7
1940	19,055	4,548	31.4	1900	39,441	6,141	18.4	1910	2,173	1,656	320.3
1930	14,507	2,952	25.5	1890	33,300	11,409	52.1	1900	517
1920	11,555	3,365	41.1	1880	21,891	6,502	42.3				
1910	8,190	3,584	77.8	1870	15,389	2,896	23.2	COLUMBUS:			
1900	4,606	598	14.9	1860	12,493	3,045	32.2	1960	116,779	37,168	46.7
1890	4,008	792	24.6	1850	9,448	3,045	47.6	1950	79,611	26,331	49.4
1880	3,216	1,115	53.1	1840	6,403	1940	53,280	10,149	23.5
1870	2,101	483	29.9	1830	(2)	1930	43,131	12,006	38.6
1860	1,618	1820	(2)	1920	31,125	10,571	51.4
				1810	2,476	261	11.8	1910	20,554	2,940	16.7
				1800	2,215	1900	17,614	311	1.8
AMERICUS:				BADNERIDGE:				1890	17,303	7,180	70.9
1960	13,472	2,083	18.3	1960	12,714	5,152	68.1	1880	10,123	2,722	36.8
1950	11,389	2,108	22.7	1950	7,562	1,210	19.0	1870	7,401	-2,220	-23.1
1940	9,281	521	5.9	1940	6,352	211	3.4	1860	9,621	3,679	61.9
1930	8,760	-250	-2.8	1930	6,141	1,349	28.2	1850	5,942	2,828	90.8
1920	9,010	947	11.7	1920	4,792	575	13.6	1840	3,114
1910	8,063	389	5.1	1910	4,271	1,576	59.7				
1900	7,674	1,276	19.9	1900	2,641	973	58.3	CORDELE:			
1890	6,398	2,763	76.0	1890	1,668	232	16.2	1960	10,609	1,147	12.1
1880	3,635	376	11.5	1880	1,436	85	6.3	1950	9,462	1,533	19.3
1870	3,259	1870	1,351	-51.8	-27.7	1940	7,929	1,049	15.2
				1860	1,869	1930	6,880	342	5.2
								1920	6,538	655	11.1
ATHENS:				BRUNSWICK:				1910	5,883	2,410	69.4
1960	31,355	3,175	11.3	1960	21,703	3,749	20.9	1900	3,473	1,895	120.1
1950	28,180	7,530	36.5	1950	17,954	2,919	19.4	1890	1,578
1940	20,650	2,458	13.5	1940	15,035	1,013	7.2				
1930	18,192	1,444	8.6	1930	14,022	-391	-2.7	DALTON:			
1920	16,748	1,835	12.3	1920	14,413	4,231	41.6	1960	17,868	1,900	11.9
1910	14,913	4,668	45.6	1910	10,182	1,101	12.1	1950	15,968	5,520	52.8
1900	10,245	1,606	18.6	1900	9,081	622	7.4	1940	10,448	2,288	28.0
1890	8,639	2,540	41.6	1890	8,459	5,568	192.6	1930	8,160	2,938	56.3
1880	6,099	1,848	43.5	1880	2,891	543	29.1	1920	5,222	-102	-1.9
1870	4,251	403	10.5	1870	2,348	1,523	184.6	1910	5,324	1,009	23.4
1860	3,848	2,187	131.7	1860	825	1900	4,315	1,269	41.7
1850	1,661					1890	3,046	530	21.1
				CARROLLTON:				1880	2,516	707	39.1
ATLANTA:				1960	10,973	3,220	41.5	1870	1,809	160	9.7
1960	487,455	156,141	47.1	1950	7,753	1,539	24.8	1860	1,649
1950	331,314	29,026	9.6	1940	6,214	1,162	23.0				
1940	302,288	31,922	11.8	1930	5,052	689	15.8	DECATUR:			
1930	270,366	69,750	34.8	1920	4,363	1,066	32.3	1960	22,026	391	1.8
1920	200,616	45,777	29.6	1910	3,297	1,299	65.0	1950	21,635	5,074	30.6
1910	154,839	64,967	72.3	1900	1,998	547	37.7	1940	16,561	3,285	24.7
1900	89,872	24,339	37.1	1890	1,451	525	56.7	1930	13,276	7,126	115.9
1890	65,533	28,124	75.2	1880	926	1920	6,150	3,684	149.4
1880	37,409	15,620	71.7					1910	2,466	1,048	73.9
1870	21,789	12,235	128.1	COLLEGE PARK:				1900	1,418	405	40.0
1860	9,554	6,982	271.5	1960	23,469	8,934	61.5	1890	1,013	374	58.5
1850	2,572	1950	14,535	6,322	77.0	1880	639	238	59.4
				1940	8,213	1,609	24.4	1870	401

¹ Estimated.
² Not returned separately.

Table 6.—AREA AND POPULATION OF COUNTIES, URBAN AND RURAL: 1960 AND 1950

[Minus sign (-) denotes decrease. Percent not shown where less than 0.1]

County	Map reference	Land area in square miles, 1960	1960 population								1950 population			Percent increase, 1950 to 1960			
			Total		Urban			Rural			Total	Urban	Rural	Total	Urban	Rural	
			Number	Per square mile	Total	Percent of total population	Urbanized areas	Other urban territory	Total	Places of 1,000 to 2,500							Other rural territory
The State.....	...	58,274	3,943,116	67.7	2,180,236	55.3	1,372,447	807,789	1,762,880	119,921	1,582,959	3,444,578	1,559,447	1,885,131	14.5	39.8	-6.5
Appling.....	K-10	514	13,246	25.8	4,268	32.2	...	4,268	8,978	...	8,978	14,003	3,409	10,594	-5.4	25.2	-15.3
Atkinson.....	M-9	318	6,188	19.5	6,188	...	2,676	7,362	...	7,362	...	-15.9	...	-15.9
Bacon.....	L-9	293	8,359	28.5	3,515	42.1	...	3,515	4,844	...	4,844	8,940	2,588	6,352	-6.5	35.8	-23.7
Baker.....	M-3	355	4,543	12.8	4,543	3,952	...	3,952	...	-23.7	...	-23.7
Baldwin.....	G-7	257	34,064	132.5	28,026	82.3	...	28,026	6,038	...	6,038	29,706	23,607	6,097	14.7	18.7	-1.0
Banks.....	C-6	231	6,497	28.1	6,497	6,935	...	6,935	...	-6.3	...	-6.3
Barrow.....	D-6	171	14,485	84.7	5,555	38.4	...	5,555	8,930	...	8,930	13,115	4,604	8,511	10.4	20.7	4.9
Bartow.....	C-3	463	28,267	61.1	8,668	30.7	...	8,668	19,599	1,026	18,573	27,370	7,270	20,100	3.3	19.2	-2.5
Ben Hill.....	K-7	255	13,633	53.5	8,781	64.4	...	8,781	4,852	...	4,852	14,879	8,130	6,749	-8.4	8.0	-28.1
Berrien.....	M-7	466	12,038	25.8	4,070	33.8	...	4,070	7,968	...	7,968	13,966	3,414	10,552	-13.8	19.2	-24.5
Bibb.....	H-6	251	141,249	562.7	118,542	83.9	114,161	4,381	22,707	...	22,707	114,079	93,499	20,580	23.8	26.8	10.3
Bleckley.....	I-7	219	9,642	44.0	4,714	48.9	...	4,714	4,928	...	4,928	9,218	3,357	5,861	4.6	40.4	-15.9
Brantley.....	M-11	447	5,891	13.2	5,891	5,891	6,387	...	6,387	-7.8	...	-7.8
Brooks.....	N-6	492	15,292	31.1	5,071	33.2	...	5,071	10,221	...	10,221	18,169	4,769	13,400	-15.8	6.3	-23.7
Bryan.....	J-12	439	6,226	14.2	6,226	...	1,450	4,776	...	5,965	...	4.4	...	4.4
Bulloch.....	T-11	684	24,263	35.5	8,356	34.4	...	8,356	15,907	...	15,907	24,740	6,097	18,643	-1.9	37.1	-14.7
Burke.....	G-11	832	20,596	24.8	5,359	26.0	...	5,359	15,237	...	15,237	23,458	4,461	18,997	-12.2	20.1	-19.8
Butts.....	G-5	185	8,976	48.5	2,545	28.4	...	2,545	6,431	...	6,431	9,079	...	9,079	-1.1	...	-29.2
Calhoun.....	I-3	289	7,341	25.4	7,341	2,384	2,384	4,957	8,578	...	8,578	-1.4	...	-14.4
Candler.....	N-12	656	9,975	15.2	3,272	32.8	...	3,272	6,703	1,536	5,167	7,322	...	7,322	36.2	...	-8.5
Candler.....	I-11	251	6,672	26.6	6,672	2,362	...	4,310	8,063	...	8,063	-17.3	...	-17.3
Carroll.....	F-2	495	36,451	73.6	14,274	39.2	...	14,274	22,177	1,548	20,629	34,112	7,753	26,359	6.9	84.1	-15.9
Catoosa.....	A-2	167	21,101	126.4	6,931	32.8	6,931	...	14,170	1,311	12,859	15,146	2,248	12,898	39.3	208.3	9.9
Chatham.....	N-10	799	5,313	6.6	5,313	1,810	...	3,503	4,821	...	4,821	10.2	...	10.2
Chatham.....	J-13	441	188,299	427.0	169,887	90.2	169,887	...	18,412	2,458	15,954	151,481	128,196	23,285	24.3	32.5	-20.9
Chatahoochee.....	J-3	253	13,011	51.4	13,011	13,011	12,149	...	12,149	7.1	...	7.1
Chattooga.....	B-1	317	19,954	62.9	4,706	23.6	...	4,706	15,248	2,227	13,021	21,197	7,001	14,196	-5.9	-32.8	7.4
Cherokee.....	C-4	414	23,001	55.6	23,001	4,407	...	18,594	20,750	2,716	18,034	10.8	...	27.5
Clarke.....	D-7	125	45,363	362.9	31,355	69.1	...	31,355	14,008	...	14,008	36,500	28,180	8,320	24.1	11.3	67.4
Clay.....	I-2	224	4,551	20.3	4,551	1,320	...	3,231	5,844	...	5,844	-22.1	...	-22.1
Clayton.....	E-4	149	46,365	311.2	30,282	65.3	27,268	3,014	16,083	2,087	13,996	22,872	6,387	16,485	102.7	374.1	-2.4
Clintnch.....	N-9	796	6,545	8.2	2,634	40.2	...	2,634	3,911	...	3,911	6,007	...	6,007	9.0	...	-34.9
Cobb.....	D-3	346	114,174	330.0	55,353	48.5	...	55,353	58,821	7,353	51,468	61,830	23,818	38,012	84.7	132.4	54.7
Colfax.....	L-8	613	21,953	35.8	8,736	39.8	...	8,736	13,217	...	13,217	23,961	7,428	16,533	-8.4	17.6	-20.1
Columbia.....	M-5	563	34,048	60.5	15,764	46.3	...	15,764	18,284	1,037	17,247	33,999	11,639	22,360	0.1	35.4	-18.2
Columbia.....	E-10	290	13,423	46.3	13,423	2,819	...	10,604	9,525	...	9,525	40.9	...	40.9
Cook.....	M-7	226	11,822	52.3	4,321	36.6	...	4,321	7,501	1,158	6,343	12,201	2,776	9,425	-3.1	55.7	-20.4
Coweta.....	F-3	443	28,893	65.2	12,169	42.1	...	12,169	16,724	1,215	15,509	27,786	8,218	19,568	4.0	48.1	14.5
Crawford.....	H-5	313	5,816	18.6	5,816	6,080	...	6,080	...	-4.3	...	-4.3
Crisp.....	K-5	296	17,768	60.0	10,609	59.7	...	10,609	7,159	...	7,159	17,663	9,462	8,201	0.6	12.1	-12.7
Dade.....	A-1	168	8,666	51.6	8,666	1,301	...	7,365	7,364	...	7,364	17.7	...	17.7
Dawson.....	C-5	209	3,590	17.2	3,590	3,712	...	3,712	...	-3.3	...	-3.3
Decatur.....	M-3	586	25,203	43.0	12,714	50.4	...	12,714	12,489	...	12,489	23,620	7,562	16,058	6.7	68.1	-22.2
De Kalb.....	E-5	269	256,782	954.6	217,165	84.6	217,165	...	39,617	3,643	35,974	136,395	97,077	39,318	88.3	123.7	0.8
Dodge.....	J-7	499	16,483	33.0	5,118	31.1	...	5,118	11,365	...	11,365	17,865	3,597	14,268	-7.7	42.3	-20.3
Dooly.....	J-5	394	11,474	29.1	11,474	3,403	...	8,071	14,159	...	14,159	-19.0	...	-19.0
Douglas.....	L-4	326	75,680	232.1	58,353	77.1	58,353	...	17,327	...	17,327	43,617	31,155	12,462	73.5	87.3	39.0
Douglas.....	E-3	201	16,741	83.3	4,611	27.5	...	4,611	12,130	...	12,130	3,400	8,732	37.5	35.6	38.3	
Early.....	M-2	526	13,151	25.0	3,580	27.2	...	3,580	9,571	310	9,261	17,413	3,234	14,179	-24.5	10.7	-32.5
Echols.....	O-8	425	1,876	4.4	1,876	1,876	2,494	...	2,494	-24.8	...	-24.8
Effingham.....	I-12	480	10,144	21.1	10,144	1,057	...	9,087	9,133	...	9,133	11.1	...	11.1
Elbert.....	O-8	359	17,835	49.7	7,107	39.8	...	7,107	10,728	...	10,728	18,585	6,772	11,813	-4.0	4.9	-9.2
Emanuel.....	H-10	686	17,815	26.0	5,943	33.4	...	5,943	11,872	1,095	10,777	19,789	4,500	15,289	-10.0	38.2	-23.4
Evans.....	J-11	186	6,952	37.4	2,672	38.4	...	2,672	4,280	...	4,280	6,653	...	6,653	4.5	...	-35.7
Fannin.....	A-4	396	13,620	34.4	13,620	3,277	...	10,343	15,192	...	15,192	-10.3	...	-10.3
Fayette.....	F-4	199	8,199	41.2	8,199	1,389	...	6,810	7,978	...	7,978	2.8	...	2.8
Floyd.....	C-2	514	69,130	134.5	37,552	54.3	...	37,552	31,578	4,282	27,296	62,899	32,849	30,050	9.9	14.3	5.1
Forsyth.....	O-5	223	12,170	54.6	12,170	1,561	...	10,609	11,005	...	11,005	10.6	...	10.6
Franklin.....	B-7	269	13,274	49.3	13,274	4,081	...	9,193	14,446	...	14,446	-8.1	...	-8.1
Fulton.....	D-4	523	556,326	1,063.7	521,784	93.8	518,801	2,983	34,542	7,346	27,196	473,572	407,075	66,496	17.5	28.2	-48.1
Gilmer.....	A-4	439	8,922	20.3	8,922	1,320	...	7,602	9,963	...	9,963	-10.4	...	-10.4
Glascock.....	G-9	142	2,672	18.8	2,672	2,672	3,579	...	3,579	-25.3	...	-25.3
Glynn.....	M-12	423	41,954	99.2	30,319	72.3	...	30,319	11,635	...	11,635	29,046	22,114	6,932	44.4	37.1	67.8
Gordon.....	B-3	358	19,228	53.7	3,587	18.7	...	3,587	15,641	...	15,641	16,922	...	16,922	1.6	11.0	-0.3
Grady.....	N-4	467	18,015	38.6	7,427	41.2	...	7,427	10,588	...	10,588	16,928	5,577	13,35			

Table 6.—AREA AND POPULATION OF COUNTIES, URBAN AND RURAL: 1960 AND 1950—Con.

[Minus sign (-) denotes decrease. Percent not shown where less than 0.1]

County	Map reference	Land area in square miles, 1960	1960 population									1950 population			Percent increase, 1950 to 1960			
			Total		Urban			Rural			Total	Urban	Rural	Total	Urban	Rural		
			Number	Per square mile	Total	Percent of total population	Urbanized areas	Other urban territory	Total	Places of 1,000 to 2,500							Other rural territory	
Jefferson.....	F-10	532	17,468	32.8	17,468	5,939	11,529	18,855	...	18,855	-7.4	...	-7.4
Jenkins.....	H-11	351	9,148	26.1	3,633	39.7	3,633	5,515	...	5,515	10,264	3,449	6,815	-10.9	5.3	-19.1
Johnson.....	H-8	313	8,048	25.7	8,048	2,056	5,992	9,893	...	9,893	-18.6	...	-18.6
Jones.....	G-6	402	8,468	21.1	8,468	1,320	7,148	7,538	...	7,538	12.3	...	12.3
Lamar.....	G-5	181	10,240	56.6	4,919	48.0	4,919	5,321	...	5,321	10,242	4,185	6,057	...	17.5	-12.2
Lanier.....	N-8	167	5,097	30.5	5,097	2,236	2,861	5,151	...	5,151	-1.0	...	-1.0
Laurens.....	I-8	811	32,313	39.8	13,814	42.8	13,814	18,499	1,677	16,822	33,123	10,232	22,891	-2.4	35.0	-19.2
Lee.....	K-4	355	6,204	17.5	6,204	...	6,204	6,674	...	6,674	-7.0	...	-7.0
Liberty.....	K-11	510	14,487	28.4	3,174	21.9	3,174	11,313	...	11,313	8,444	...	8,444	71.6	...	34.0
Lincoln.....	D-9	207	5,906	28.5	5,906	1,450	4,456	6,462	...	6,462	-8.6	...	-8.6
Long.....	K-11	403	3,874	9.6	3,874	1,578	2,296	3,598	...	3,598	7.7	...	7.7
Lowndes.....	N-7	506	49,270	97.4	30,652	62.2	30,652	18,618	1,297	17,321	35,211	20,046	15,165	39.9	52.9	22.8
Lumpkin.....	B-5	291	7,241	24.9	2,604	36.0	2,604	4,637	...	4,637	6,574	...	6,574	10.1	...	-29.5
McDuffie.....	E-9	257	12,627	49.1	4,522	35.8	4,522	8,105	...	8,105	11,443	3,489	7,954	10.3	29.6	1.9
McIntosh.....	L-12	431	6,364	14.8	6,364	1,569	4,795	6,008	...	6,008	5.9	...	5.9
Macon.....	I-5	399	13,170	33.0	3,744	28.4	3,744	9,426	2,477	6,949	14,213	2,921	11,292	-7.3	28.2	-16.5
Madison.....	C-7	281	11,246	40.0	11,246	...	11,246	12,238	...	12,238	-8.1	...	-8.1
Marion.....	I-3	365	5,477	15.0	5,477	1,574	3,903	6,521	...	6,521	-16.0	...	-16.0
Meriwether.....	G-3	499	19,756	39.6	4,115	20.8	4,115	15,641	1,230	14,411	21,055	3,984	17,071	-6.2	3.3	-8.4
Miller.....	M-2	287	6,908	24.1	6,908	1,556	5,352	9,023	...	9,023	-23.4	...	-23.4
Mitchell.....	M-4	511	19,652	38.5	9,362	47.6	9,362	10,290	41	10,249	22,528	8,110	14,418	-12.8	15.4	-28.6
Monroe.....	G-5	399	10,495	26.3	3,697	35.2	3,697	6,798	...	6,798	10,523	3,125	7,398	-0.3	18.3	-8.1
Montgomery.....	K-9	235	6,284	26.7	6,284	1,166	5,118	7,901	...	7,901	-20.5	...	-20.5
Morgan.....	E-6	357	10,280	28.8	2,680	26.1	2,680	7,600	...	7,600	11,899	...	11,899	-13.6	...	-36.1
Murray.....	A-3	342	10,447	30.5	10,447	1,184	9,263	10,676	...	10,676	-2.1	...	-2.1
Muscogee.....	I-3	220	158,623	721.0	130,752	82.4	130,752	27,871	...	27,871	118,028	95,180	22,848	34.4	37.4	22.0
Newton.....	E-6	273	20,999	76.9	8,167	38.9	8,167	12,832	3,412	9,420	20,185	8,399	11,786	4.0	-2.8	8.9
Oconee.....	D-7	186	6,304	33.9	6,304	...	6,304	7,009	...	7,009	-10.1	...	-10.1
Oglethorpe.....	D-8	432	7,926	18.3	7,926	...	7,926	9,958	...	9,958	-20.4	...	-20.4
Faulding.....	D-3	318	13,101	41.2	13,101	2,065	11,036	11,752	...	11,752	11.5	...	11.5
Peach.....	I-5	151	13,846	91.7	8,310	60.0	8,310	5,536	1,138	4,398	11,705	6,820	4,885	18.3	21.8	13.3
Pickens.....	B-4	225	8,903	39.6	8,903	1,036	7,867	8,855	...	8,855	0.5	...	0.5
Pierce.....	M-10	342	9,678	28.3	9,678	2,482	7,196	11,112	...	11,112	-12.9	...	-12.9
Pike.....	G-4	230	7,138	31.0	7,138	...	7,138	8,459	...	8,459	-15.6	...	-15.6
Polk.....	D-1	312	28,015	89.8	13,278	47.4	13,278	14,737	1,023	13,714	30,976	13,291	17,685	-9.6	-0.1	-16.7
Pulaski.....	J-6	254	8,204	32.3	3,967	48.4	3,967	4,237	...	4,237	8,808	3,342	5,466	-6.9	18.7	-22.5
Putnam.....	F-7	341	7,798	22.9	3,612	46.3	3,612	4,186	...	4,186	7,731	2,749	4,982	0.9	31.4	-16.0
Quitman.....	K-2	170	2,432	14.3	2,432	...	2,432	3,015	...	3,015	-19.3	...	-19.3
Rabun.....	A-7	369	7,456	20.2	7,456	1,507	5,949	7,424	...	7,424	0.4	...	0.4
Randolph.....	K-3	436	11,078	25.4	4,300	38.8	4,300	6,778	1,050	5,728	13,804	4,025	9,779	-19.7	6.8	-30.7
Richmond.....	F-10	325	135,601	417.2	110,870	81.8	110,870	24,731	...	24,731	108,876	84,074	24,802	24.5	31.9	-0.3
Rockdale.....	E-5	128	10,572	82.6	2,881	27.3	2,881	7,691	1,047	6,644	8,464	...	8,464	24.9	...	-9.1
Schley.....	J-4	162	3,256	20.1	3,256	...	3,256	4,036	...	4,036	-19.3	...	-19.3
Screven.....	H-11	651	14,919	22.9	3,469	23.3	3,469	11,450	...	11,450	18,000	2,939	15,061	-17.1	18.0	-24.0
Seminole.....	N-2	254	6,802	26.8	2,621	38.5	2,621	4,181	...	4,181	7,904	2,569	5,335	-13.9	2.0	-21.6
Spalding.....	F-4	201	35,404	176.1	21,735	61.4	21,735	13,669	4,212	9,457	31,045	18,247	12,798	14.0	19.1	6.8
Stephens.....	B-7	180	18,391	102.2	7,303	39.7	7,303	11,088	...	11,088	16,647	6,781	9,866	10.5	7.7	12.4
Stewart.....	J-3	463	7,371	15.9	7,371	2,820	4,551	9,194	...	9,194	-19.8	...	-19.8
Sumter.....	J-4	485	24,652	50.8	13,472	54.6	13,472	11,180	...	11,180	24,208	11,389	12,819	1.8	18.3	-12.8
Talbot.....	H-3	390	7,127	18.3	7,127	1,163	5,964	7,687	52	7,635	-7.3	...	-6.7
Taliaferro.....	E-8	195	3,370	17.3	3,370	...	3,370	4,515	...	4,515	-25.4	...	-25.4
Tattnell.....	K-10	493	15,837	32.1	2,791	17.6	2,791	13,046	1,229	11,817	15,939	...	15,939	-0.6	...	-18.2
Taylor.....	H-4	400	8,311	20.8	8,311	2,433	5,878	9,113	...	9,113	-8.8	...	-8.8
Telfair.....	K-8	440	11,715	26.6	2,738	23.4	2,738	8,977	2,650	6,327	13,221	...	13,221	-11.4	...	-32.1
Terrell.....	K-4	329	12,742	38.7	5,062	39.7	5,062	7,680	...	7,680	14,314	4,411	9,903	-11.0	14.8	-22.4
Thomas.....	N-5	540	34,319	63.6	18,246	53.2	18,246	16,073	2,552	13,521	33,932	14,424	19,508	1.1	26.5	-17.6
Tift.....	L-6	266	23,487	88.3	9,903	42.2	9,903	13,584	3,644	9,940	22,645	9,601	13,044	3.7	3.1	4.1
Toombs.....	J-10	369	16,837	45.6	10,788	64.1	10,788	6,049	...	6,049	17,382	8,618	8,764	-3.1	25.2	-31.0
Towns.....	A-6	166	4,538	27.3	4,538	...	4,538	4,803	...	4,803	-5.5	...	-5.5
Treutlen.....	J-9	194	5,874	30.3	5,874	2,317	3,557	6,522	...	6,522	-9.9	...	-9.9
Troup.....	G-2	447	47,189	105.6	31,324	66.4	31,324	15,865	...	15,865	49,841	32,870	16,971	-5.3	-4.7	-6.5
Turner.....	L-6	293	8,439	28.8	3,291	39.0	3,291	5,148	...	5,148	10,479	2,918	7,561	-19.5	12.8	-31.9
Twiggs.....	H-6	365	7,935	21.7	7,935	1,013	6,922	8,308	...	8,308	-4.5	...	-4.5
Union.....	A-5	339	6,510	20.4	6,510	...	6,510	7,318	...	7,318	-11.0	...	-11.0
Upson.....	G-4	333	23,800	71.5	9,336	39.2	9,336	14,464	4,077	10,387	25,078	13,049	12,029	-5.1	-28.5	20.2
Walker ²	A-1	445	45,264	101.7	18,956	41.9	13,368	...	5,588	26,308	1,824	24,484	38,198	12,538	25,660	18.5	51.2	2.5
Walton.....	D-6	330	20,481	62.1	6,826	33.3	6,826	13,655	1,780	11,875	20,230	4,542	15,688	1.2	50.3	-13.0
Ware.....	M-9	912	34,219	37.5	23,702	69.3	23,702	10,517	...	10,517	30,289	18,899	11,390	13.0	25.4	-7.7
Warren.....	E-9	284	7,360	25.9	7,360	1,770	5,590	8,779	...	8,779	-16.2	...	-16.2
Washington.....	G-8	674	18,903	28.0	5,425	28.7	5,425	13,478	1,837	11,641	21,012	4,480	16,532	-10.0	21.1	-18.5
Wayne.....	K-11	646	17,921	27.7	7,304	40.8	7,304	10,617	1,010	9,607	14,248	4,605	9,643	25.8	58.6	10.1
Webster.....	J-3	195	3,247	16.7	3,247	...	3,247	4,081	...	4,081	-20.4	...	-20.4
Wheeler.....	J-8	306	5,342	17.5	5,342	...	5,342	6,712	...	6,712	-20.4	...	-20.4
White.....	B-6	243	6,935	28.5														

Table 7.—POPULATION OF COUNTIES, BY CENSUS COUNTY DIVISIONS: 1960
 ["U" denotes an unincorporated place. Total population of a place located in 2 or more census county divisions appears in table 8]

County and census county division	Population	County and census county division	Population	County and census county division	Population	County and census county division	Population
APPLING COUNTY	13,246	BIBB COUNTY--Con.		CAMDEN COUNTY	9,975	CLARKE COUNTY	45,363
Altamaha River div.....	1,665	Macon div.....	69,764	Kingsland div.....	2,485	Athens div.....	31,355
Baxley div.....	6,753	Macon city ⁶	69,764	Kingsland city.....	1,536	Athens city ¹⁷	31,355
Baxley city.....	4,268	Rutland div.....	5,133	St. Marys div.....	3,833	Middle Oconee div.....	5,740
Satilla Creek div.....	2,879	South Macon div.....	23,692	St. Marys city ¹²	3,272	Bogart town (pt.).....	89
Graham town.....	130	Swift Creek div.....	4,836	Woodbine div.....	3,657	Whitehall div.....	4,120
Surrency-Thornton div.....	1,949	Walnut Creek div.....	9,244	Woodbine city ¹²	845	Whitehall town.....	409
Surrency town.....	312	West Macon div.....	11,965	CANDLER COUNTY	6,672	Winterville div.....	4,148
ATKINSON COUNTY	6,188	Payne city.....	346	Aline div.....	1,122	Winterville city ¹⁷	497
Axson div.....	1,055	BLECKLEY COUNTY	9,642	Metter div.....	4,297	CLAY COUNTY	4,551
Pearson div.....	3,442	Cochran div.....	8,158	Metter city.....	2,362	Bluffton div.....	1,548
Pearson city.....	1,615	Cochran city.....	4,714	Pulaski div.....	1,253	Bluffton town.....	176
Willacoocnee div.....	1,691	Salem div.....	1,484	Pulaski town.....	155	Fort Gaines div.....	3,003
Willacoocnee town.....	1,061	BRANTLEY COUNTY	5,891	CARROLL COUNTY	36,451	Fort Gaines city.....	1,320
BACON COUNTY	8,359	Hoboken div.....	1,896	Bowdon div.....	6,130	CLAYTON COUNTY ¹⁸	46,365
Alma div.....	5,987	Hoboken city.....	552	Bowdon city ¹³	1,548	College Park div.....	11,433
Alma city.....	3,515	Nahunta div.....	2,991	Carrollton div.....	10,973	College Park city (pt.).....	8,306
Rockingham div.....	2,372	Hickox town.....	71	Carrollton city ¹³	10,973	Forest Park div.....	18,580
BAKER COUNTY	4,543	Nahunta city.....	952	Carrollton Rural East div.....	3,249	Forest Park town ¹⁸	14,201
Milford div.....	2,053	Waynesville div.....	1,004	Carrollton Rural West div.....	2,956	Jonesboro div.....	6,577
Newton div.....	2,430	BROOKS COUNTY	15,292	Mount Zion-Bowden Junction div.....	2,190	Jonesboro city ¹⁸	3,014
Newton city.....	529	Barney div.....	998	Mount Zion town.....	211	Lovejoy town.....	191
BALDWIN COUNTY	34,064	Barney town.....	165	Roopville div.....	1,690	Morrow div.....	6,695
Coopers div.....	2,323	Barwick-Pavo div.....	2,214	Roopville town.....	203	Lake city ¹⁸	1,042
Meriwether div.....	2,150	Barwick town (pt.).....	188	Temple div.....	2,310	Morrow town.....	580
Midway-Hardwick div.....	16,909	Pavo city (pt.) ⁷	265	Temple town.....	788	Riverdale div.....	3,080
Midway-Hardwick (U).....	16,909	Dixie div.....	1,905	Villa Rica div.....	5,289	Riverdale city ⁸	1,045
Milledgeville div.....	11,117	Dixie town.....	220	Villa Rica City (pt.) ¹³	3,301	CLINCH COUNTY	6,545
Milledgeville city ⁵	11,117	Empress div.....	959	Whitesburg div.....	1,664	Fargo div.....	1,251
Union Point div.....	1,565	Morven div.....	2,056	Whitesburg town.....	366	Homerville div.....	5,294
BANKS COUNTY	6,497	Morven town.....	476	CATOOSA COUNTY	21,101	Argyle town.....	225
Baldwin div.....	1,922	Quitman div.....	7,160	Boynton Ridge div.....	3,841	Du Pont town.....	210
Alto town (pt.).....	96	Quitman city.....	5,071	Graysville town.....	138	Homerville city.....	2,634
Baldwin town (pt.).....	195	BRYAN COUNTY	6,226	Catoosa Springs div.....	2,304	COBB COUNTY	114,174
Davis Academy div.....	1,035	Fort Stewart div.....	...	Fort Oglethorpe-Westside div.....	4,937	Acworth-Kennesaw div.....	11,608
Homer div.....	2,116	Pembroke div.....	4,226	Fort Oglethorpe town (pt.) ¹⁴	2,192	Acworth city ¹⁹	2,359
Homer town.....	612	Pembroke city.....	1,450	Lakeview div.....	5,144	Kennesaw town ¹⁹	1,507
Maysville div.....	1,424	Richmond Hill div.....	2,000	Ringgold div.....	4,875	Austell div.....	5,992
Gillsville town (pt.).....	31	BULLOCH COUNTY	24,263	Ringgold city ¹⁴	1,311	Austell city (pt.) ¹⁹	1,867
Lula city (pt.) ³	61	Brooklet div.....	2,937	CHARLTON COUNTY	5,313	Fair Oaks div.....	11,547
Maysville town (pt.).....	344	Brooklet town.....	557	Folkston div.....	4,259	Fair Oaks (U) (pt.).....	6,283
BARROW COUNTY	14,485	Neville-Stilson div.....	2,556	Folkston city.....	1,810	Mableton div.....	11,880
Auburn div.....	2,217	Portal div.....	2,821	Homeland town.....	508	Mableton (U).....	7,127
Auburn town.....	374	Portal town.....	494	St. George div.....	1,054	Marietta div.....	41,207
Carl town.....	204	Register div.....	1,676	CHATHAM COUNTY ¹⁵	188,299	Elizabeth (U).....	1,620
Bethlehem div.....	1,352	Statesboro div.....	8,356	Garden City div.....	8,726	Fair Oaks (U) (pt.).....	1,260
Bethlehem town.....	297	Statesboro city ⁸	8,356	Garden City town ¹⁵	5,451	Marietta city ¹⁹	25,565
Statham div.....	2,376	Statesboro Rural North div.....	2,437	Montgomery div.....	4,212	Marietta East (U).....	4,535
Statham town.....	711	Statesboro Rural South div.....	3,480	Pooler-Burroughs div.....	5,597	Northeast Cobb div.....	4,899
Winder div.....	8,540	BURKE COUNTY	20,596	Pooler town ¹⁵	1,073	Powder Springs div.....	3,556
Russell city.....	163	Girard div.....	1,303	Port Wentworth div.....	5,334	Powder Springs city.....	746
Winder city.....	5,555	Girard village.....	248	Port Wentworth city ¹⁵	5,334	Smyrna div.....	17,382
BARTOW COUNTY	28,267	Greens Cut div.....	2,000	Savannah div.....	149,245	Fair Oaks (U) (pt.).....	426
Adairsville div.....	3,274	Keysville div.....	1,334	Savannah city ¹⁵	149,245	Smyrna town ¹⁹	10,157
Adairsville city ⁴	1,026	Blythe town (pt.).....	2	Savannah Beach-Wilmington div.....	3,277	Vinings div.....	6,103
Cartersville div.....	12,397	Midville div.....	2,590	Savannah Beach town.....	1,385	COFFEE COUNTY	21,953
Cartersville city ⁴	8,668	Midville village.....	676	Thunderbolt div.....	4,105	Ambrose div.....	2,390
Emerson div.....	1,938	Sardis div.....	2,349	Thunderbolt town.....	1,925	Ambrose city ²⁰	244
Emerson city.....	666	Sardis town.....	829	Vernonburg-White Bluff div.....	1,130	Broxton div.....	2,878
Buharlee-Taylorville div.....	2,089	Vidette div.....	1,783	Vernonburg town ¹⁵	65	Broxton city.....	907
Taylorville town (pt.).....	199	Vidette village.....	103	West Savannah div.....	6,673	Douglas div.....	13,132
Kingston div.....	1,809	Waynesboro div.....	5,359	CHATHAHOOCHEE COUNTY	13,011	Douglas city ²⁰	8,736
Kingston city ⁴	695	Waynesboro city ⁹	5,359	Cusseta div.....	1,442	Nicholls div.....	1,897
Ladd div.....	3,810	Waynesboro East div.....	1,956	Cusseta town.....	768	Nicholls city.....	930
White Pine Log div.....	2,950	Waynesboro West div.....	1,922	Fort Benning div.....	11,569	West Green div.....	1,656
White town.....	439	BUTTS COUNTY	8,976	CHATTOOGA COUNTY	19,954	COLUMBIA COUNTY	13,423
BEN HILL COUNTY	13,633	Flovilla div.....	1,398	Little Sand Mountain div.....	1,257	Applying div.....	2,216
Fitzgerald div.....	8,781	Flovilla city.....	284	Iyerly div.....	2,027	Berlin-Ellenton div.....	2,425
Fitzgerald city ⁴	8,781	Jackson div.....	3,068	Iyerly town.....	409	Berlin town.....	419
Little House Creek div.....	2,487	Jackson city ¹⁰	2,545	Menlo div.....	2,221	Ellenton town.....	385
Sturgeon Creek div.....	2,385	Pepperton town.....	523	Menlo town.....	466	Doern div.....	3,045
BERRIEN COUNTY	12,038	Jackson Rural div.....	1,867	Summerville div.....	8,522	Doern city.....	1,037
Alapaha div.....	1,626	Jenkinsburg div.....	889	Summerville city.....	4,706	Funston div.....	3,680
Alapaha town.....	631	Jenkinsburg town.....	233	Trion div.....	5,927	Funston town.....	293
Enigma div.....	1,956	Towaliga div.....	895	Trion town.....	2,227	Moultrie div.....	16,093
Enigma town.....	525	Worthville div.....	859	CHEROKEE COUNTY	23,001	Moultrie city ²¹	15,764
Nashville div.....	6,726	CALHOUN COUNTY	7,341	Ball Ground div.....	2,720	Riverside town.....	329
Nashville city.....	4,070	Arlington div.....	1,704	Ball Ground city ¹⁶	707	Moultrie Rural North div.....	2,539
Ray City div.....	1,730	Arlington city (pt.).....	1,152	Nelson city (pt.) ¹⁶	117	Moultrie Rural South div.....	3,354
Ray City town.....	713	Edison div.....	2,430	Canton div.....	8,835	Norman Park div.....	2,912
BIBB COUNTY	141,249	Edison city.....	1,232	Canton city ¹⁶	2,411	Crosland town.....	95
Bloomfield div.....	8,484	Leary div.....	1,639	North Canton (U).....	1,996	Norman Park town.....	891
Bloomfield Gardens (U).....	4,381	Leary city.....	848	Holly Springs div.....	3,656	COLUMBIA COUNTY	13,423
Howard div.....	5,018	Morgan div.....	1,568	Holly Springs city ¹⁶	475	Applying div.....	2,216
Lizella div.....	3,113	Dickey town.....	76	Latham town div.....	3,015	Berlin div.....	5,606
		Morgan city.....	293	Waleska div.....	1,574	Harlem div.....	5,601
				Waleska city ¹⁶	479	Grovetown city ²²	1,296
				Woodstock div.....	3,201	Harlem city ²²	1,423
				Woodstock city ¹⁶	726		

See footnotes at end of table, p. 19.

Table 7.—POPULATION OF COUNTIES, BY CENSUS COUNTY DIVISIONS: 1960—Con.

["U" denotes an unincorporated place. Total population of a place located in 2 or more census county divisions appears in table 8]

County and census county division	Population	County and census county division	Population	County and census county division	Population	County and census county division	Population
COOK COUNTY	11,822	DODGE COUNTY—Con.		FANNIN COUNTY	13,620	GLYNN COUNTY	41,954
Adel div.....	4,321	Eastman div. ^{3d}	5,118	Blue Ridge div.....	3,423	Brunswick div.....	21,703
Adel city ³³	4,321	Eastman city.....	5,118	Blue Ridge city.....	1,406	Brunswick city ⁴⁰	21,703
Adel Rural East div.....	1,729	Eastman Rural East div.....	3,033	Higdon-Mobile div.....	1,568	Dock Junction div.....	9,265
Cecil town.....	279	Plainfield town.....	84	McCaysville div.....	4,943	Dock Junction (U).....	5,417
Adel Rural West div.....	1,206	Eastman Rural West div.....	2,469	McCaysville city.....	1,871	Everett div.....	3,899
Lenox div.....	2,071	Rhine div.....	1,941	Mineral Bluff div.....	1,611	St. Simons div.....	5,346
Lenox town.....	802	Rhine town.....	485	Mineral Bluff town.....	149	St. Simons (U).....	3,199
Sparks div.....	2,495			Morganton div.....	2,075	Thalman div.....	1,741
Sparks town.....	1,158			Morganton town.....	211		
		DOOLY COUNTY	11,474			GORDON COUNTY	19,228
COWETA COUNTY	28,893	Byromville div.....	2,506	FAYETTE COUNTY	8,199	Calhoun div.....	3,587
East Newman div.....	1,874	Byromville town.....	349	Brooks div.....	1,646	Calhoun city ⁴¹	3,587
Grantville div.....	2,132	Lilly town.....	136	Brooks town.....	158	Echota div.....	3,823
Grantville city ⁴⁴	1,158	Unadilla div.....	4,032	Woolsey town.....	114	Fairmount div.....	2,206
McCollum div.....	1,979	Pinehurst town.....	457	Fayetteville div.....	4,195	Fairmount city.....	619
Palmetto town (pt.).....	57	Unadilla town.....	1,304	Fayetteville city ³⁵	1,389	McDaniels div.....	4,653
Moreland div.....	1,990	Vienna div.....	4,936	Tyrone div.....	2,358	Plainville town.....	161
Moreland town.....	329	Vienna town.....	2,099	Tyrone town.....	124	Red Bud div.....	2,081
Newman div.....	12,169					Oakman town.....	156
Newman city ³⁴	12,169	DOUGHERTY COUNTY	75,680	FLOYD COUNTY	69,130	Ranger town.....	161
Sargent div.....	3,894	Albany div.....	55,890	Alto Park div.....	4,261	Sugar Valley-Resaca div.....	2,878
Senobia div.....	3,310	Albany city ³¹	55,890	Armuchee div.....	3,428	Sugar Valley town.....	165
Haralson town (pt.).....	121	Central Dougherty div.....	8,735	Berry Hill div.....	5,909		
Senobia city.....	782	East Dougherty div.....	5,143	Alto Park (U).....	2,526	GRADY COUNTY	18,015
Sharpsburg town.....	155	West Dougherty div.....	5,912	Cave Springs div.....	3,443	Cairo div.....	10,993
Turin town.....	183			Cave Springs city.....	1,153	Cairo city ⁴²	7,427
West Newman div.....	1,845	DOUGLAS COUNTY ³²	16,741	De Soto Park div.....	1,462	Pine Park town.....	82
		Billarp div.....	1,568	Lindale-Gaither Park div.....	5,535	Calvary-Reno div.....	2,352
CRAWFORD COUNTY	5,816	Douglasville div.....	4,462	Lindale-Silver Creek (U).....		Reno town.....	90
Roberta div.....	3,692	Douglasville city ³²	4,462	(pt.).....	2,530	Duncanville div.....	666
Roberta city ³⁵	714	Fairplay div.....	1,226	Riverside div.....	5,200	Lime Sink div.....	629
Zenith div.....	2,124	Lithia Springs div.....	7,440	Celanese village (U).....	1,500	Spence div.....	1,328
		Austell city (pt.) ³³	2,045	Rome div.....	32,226	Whigham div.....	2,047
CRISP COUNTY	17,768	Winston div.....	2,045	Rome city ³⁶	32,226	Whigham city ⁴²	463
Arabi div.....	1,214	Villa Rica city (pt.) ³²	149	Shannon div.....	3,360		
Arabi town.....	303			Shannon (U).....	1,629	GREENE COUNTY ⁴³	11,193
Cordale div.....	10,655	EARLY COUNTY	13,151	Spring Creek div.....	4,286	Greensboro div.....	4,917
Cordale city ²⁶	10,609	Blakely div.....	3,580	Lindale-Silver Creek (U).....		Greensboro city.....	2,773
East Crisp div.....	2,635	Blakely city.....	3,580	(pt.).....	270	Creshamville div.....	569
West Crisp div.....	3,264	Colomoke div.....	2,420	FORSYTH COUNTY	12,170	Siloam div.....	1,103
		Cuba div.....	2,283	Big Creek div.....	1,999	Siloam town.....	321
DADE COUNTY	8,666	Damascus div.....	2,745	Chestatee div.....	1,629	Union Point div.....	2,472
North Dade div.....	4,649	Arlington city (pt.).....	310	Cumming div.....	6,292	Union Point town.....	1,615
Trenton town.....	1,301	Damascus town.....	297	Cumming town.....	1,561	White Plains div.....	1,247
Sand Mountain div.....	2,264	Jakin div.....	2,123	Ducktown town.....	49	White Plains city.....	273
Upper Lookout Creek div.....	1,753	Jakin town.....	176	Silver City div.....	2,250	Woodville div.....	885
						Penfield town.....	105
DAWSON COUNTY	3,590	ECHOLS COUNTY	1,876			Woodville town.....	372
Dawsonville div.....	3,590	Echols div.....	1,876	FRANKLIN COUNTY	13,274		
Dawsonville town.....	307	Howell town.....	141	Carnesville div.....	3,475	GWINNETT COUNTY	43,541
				Carnesville city ³⁷	481	Buford div.....	7,870
DECATUR COUNTY	25,203	EFFINGHAM COUNTY	10,144	Lavonia div.....	4,058	Buford city.....	4,168
Attapulgus div.....	4,063	Guyton-Springfield div.....	5,057	Royston div.....	3,957	Rest Haven town.....	167
Attapulgus town.....	567	Guyton town.....	670	Canon city (pt.).....	583	Sugar Hill town.....	1,175
Bainbridge div.....	12,714	Pineora city ³³	210	Franklin Springs city ³⁷	278	Decula-Rocky Creek div.....	4,270
Bainbridge city.....	12,714	Springfield city.....	858	Royston city (pt.).....	1,993	Decula town.....	440
Erinon div.....	3,297	Rincon div.....	3,246	Sandy Cross div.....	1,784	Lawrenceville div.....	9,508
Erinon town.....	246	Rincon town.....	1,057			Lawrenceville city ⁴⁴	3,804
Climax div.....	2,128	Shawnee div.....	1,831	FULTON COUNTY	556,326	Lilburn div.....	4,667
Climax town.....	329			Alpharetta div.....	7,392	Lilburn city ⁴⁴	753
Paceville div.....	1,918	ELBERT COUNTY	17,835	Alpharetta town.....	1,349	Norcross div.....	7,825
Parkers div.....	1,123	Bowman div.....	2,330	Mountain Park city.....	62	Berkeley Lake city ⁴⁴	94
		Bowman city.....	2,330	Atlanta div.....	446,123	Norcross city.....	1,605
DE KALB COUNTY	256,782	Coldwater Creek div.....	2,137	Atlanta city (pt.) ³⁸	446,123	Snellville-Grayson div.....	5,135
Atlanta div.....	41,332	Ruckersville town.....	64	Campbellton div.....	4,905	Grayson town.....	282
Atlanta city (pt.).....	41,332	Dove Creek div.....	1,919	College Park div.....	15,953	Loganville city (pt.).....	104
Avondale Estates-Belvedere div.....	25,361	Elberton div.....	7,107	College Park city (pt.) ³⁸	15,163	Snellville town.....	468
Avondale Estates city.....	1,646	Elberton city.....	7,107	East Point div.....	35,633	Suwanee-Duluth div.....	4,266
Candler-Glenwood div.....	25,021	Middleton div.....	4,342	East Point city ³⁸	35,633	Duluth town.....	1,483
Chamblee-Doraville div.....	31,977	Middleton town.....	106			Suwanee town.....	541
Chamblee city ²⁹	6,635	EMANUEL COUNTY ³⁴	17,815	Fairburn-Union div.....	10,666		
Doraville city ²⁹	4,437	Adrian div.....	1,392	Fairburn city.....	2,470	HABERSHAM COUNTY	18,116
Clarkston div.....	4,787	Adrian city (pt.).....	268	Union City.....	2,118	Clarkeville div.....	5,977
Clarkston town.....	1,524	Oak Park div.....	1,039	Hapeville div.....	10,082	Clarkeville city ⁴⁵	1,352
Constitution-Panthersville div.....	17,783	Oak Park town.....	302	Hapeville city ³⁸	10,082	Cornelia div.....	2,936
Decatur div.....	22,026	Summertown div.....	2,114	Palmetto div.....	3,284	Cornelia city ⁴⁵	2,936
Decatur city.....	22,026	Summertown town.....	30	Palmetto town (pt.).....	1,409	Demorest div.....	4,118
Druid Hills-North Decatur div.....	22,559	Canochee town.....	30	Roswell div.....	5,832	Demorest town.....	1,029
Lithonia div.....	10,499	Colemans Lake city ³⁴	34	Roswell city ³⁸	2,983	Mount Airy town.....	417
Lithonia city.....	1,667	Swainsboro div.....	9,333	Sandy Springs div.....	16,456	Mud Creek div.....	3,401
North Atlanta div.....	12,661	Modoc town.....	33			Alto town (pt.).....	179
North Atlanta village ²⁹	12,661	Munes town.....	18	GILMER COUNTY	8,922	Baldwin town (pt.).....	503
North Druid Hills div.....	17,157	Swainsboro city.....	5,943	Cartecay div.....	1,442	Turnersville div.....	1,684
Scottdale div.....	9,175	Wesley town.....	79	Cherry Log div.....	2,261	Tallulah Falls town (pt.).....	171
Stone Mountain div.....	5,510	Twin City div.....	3,937	East Ellijay div.....	2,567		
Pine Lake town.....	738	Garfield town.....	225	East Ellijay town.....	501	HALL COUNTY	49,739
Stone Mountain city.....	1,976	Stillmore town.....	324	Ellijay div.....	2,652	Clemont div.....	4,196
Tucker div.....	10,934	Twin City.....	1,095	Ellijay city.....	1,320	Clemont town ⁴⁶	268
		EVANS COUNTY	6,952			Flowers Branch div.....	3,324
DODGE COUNTY ³⁰	16,483	Canochee div.....	1,074	GLASCOCK COUNTY	2,672	Flowers Branch town.....	741
Chauncey div.....	1,953	Claxton div.....	5,878	Gibson div.....	1,756	Gainesville div.....	16,787
Chauncey town.....	330	Claxton city.....	2,672	Gibson city.....	479	Gainesville city ⁴⁶	16,523
Milan town (pt.).....	367	Daisy town.....	229	Mitchell div.....	916	Lula div.....	2,638
Chester div.....	1,969	Hagan city.....	552	Edge Hill city ³⁹	55	Gillsville town (pt.).....	109
Chester town.....	377			Mitchell town.....	184	Lula city (pt.) ⁴⁶	496
						Murrayville div.....	2,951
						North East Gainesville div.....	4,727

See footnotes at end of table, p. 19.

Table 7.—POPULATION OF COUNTIES, BY CENSUS COUNTY DIVISIONS: 1960—Con.

["U" denotes an unincorporated place. Total population of a place located in 2 or more census county divisions appears in table 8]

County and census county division	Population	County and census county division	Population	County and census county division	Population	County and census county division	Population
HALL COUNTY—Con.		JASPER COUNTY 6,135		LINCOLN COUNTY 5,906		MILLER COUNTY 6,908	
Oakwood div.....	3,284	Eudora div.....	573	Lincolnton div.....	3,511	Bellview div.....	1,459
Oakwood town.....	218	Hillsboro div.....	795	Lincolnton town.....	1,450	Colquitt div.....	3,714
South West Gainesville div.....	5,818	Monticello div.....	3,608	South Lincolnton div.....	2,395	Boykin town.....	601
Tadmore div.....	6,014	Monticello city.....	1,931			Colquitt city.....	1,556
Gainesville Cotton Mills (U).....	2,207	Shady Dale div.....	1,159	LONG COUNTY 3,874		Mayhaw div.....	1,735
HANCOCK COUNTY 9,979		Farrar town.....	42	Ludowici div.....	3,874		
Devereux div.....	1,490	Newborn town (pt.) ⁵²	21	Ludowici city ⁵⁹	1,578	MITCHELL COUNTY 19,652	
Linton div.....	1,297	Shady Dale town.....	201			Baconton div.....	1,413
Mayfield div.....	1,651	JEFF DAVIS COUNTY 8,914		LOWNDES COUNTY 49,270		Baconton city ⁶⁶	564
Sparta div.....	5,541	Denton div.....	1,726	Clyattville div.....	5,104	Branchville div.....	1,731
Sparta city.....	1,921	Denton city.....	41,726	Remerton town ⁶⁰	571	Camilla div.....	7,405
HARALSON COUNTY 14,543		Hazlehurst div.....	7,188	Hahira div.....	3,481	Camilla city.....	4,753
Bremen div.....	5,986	Hazlehurst city ⁵³	3,699	Hahira city ⁶⁰	1,297	Pelham div.....	7,297
Bremen city.....	3,132	JEFFERSON COUNTY ⁵⁴ 17,468		Lake Park div.....	2,898	Cotton town.....	108
Waco town.....	381	Louisville div.....	6,167	Lake Park town.....	338	Meigs town (pt.).....	41
Buchanan div.....	3,610	Louisville city.....	2,413	Naylor div.....	2,052	Pelham city.....	4,609
Buchanan city.....	753	Stapleton div.....	1,975	Naylor town.....	272	Sale City div.....	1,806
Tallapoosa div.....	4,947	Avera town.....	197	Pine Grove div.....	4,927	Sale City town.....	275
Tallapoosa city.....	2,744	Stapleton town.....	356	Valdosta div.....	30,808		
HARRIS COUNTY 11,167		Wadley div.....	5,006	Valdosta city ⁶⁰	30,652	MONROE COUNTY 10,495	
Chipley div.....	3,376	Bartow town.....	366			Culloden div.....	1,840
Pine Mountain town ¹⁹	790	Wedley town.....	1,898	LUMPKIN COUNTY 7,241		Culloden village.....	260
West Point city (pt.) ⁴⁷	576	Wrens div.....	4,320	Dahlonega div.....	4,405	Forsyth div.....	7,460
Hamilton div.....	2,157	Matthews town.....	106	Dahlonega city.....	2,604	Forsyth city.....	3,697
Hamilton city.....	396	Wrens town.....	1,628	Three Sisters Mountains div.....	2,836	Juliette div.....	1,195
Shiloh div.....	1,913	JENKINS COUNTY 9,148		McDUFFIE COUNTY 12,627		MONTGOMERY COUNTY 6,284	
Waverly Hall div.....	3,721	North Ogeechee div.....	6,834	Dearing div.....	2,277	Mount Vernon-Ailey div.....	3,066
Waverly Hall town.....	712	Millen city.....	3,633	Dearing town.....	403	Ailey town ⁶⁷	469
HART COUNTY 15,229		South Ogeechee div.....	2,314	Thomson div.....	4,522	Higgeston town.....	151
Bowersville div.....	2,038	JOHNSON COUNTY 8,048		Thomson city ⁶¹	4,522	Mount Vernon city.....	1,166
Bowersville town.....	293	Adrian div.....	1,244	Thomson city ⁶¹	4,522	Tarrytown div.....	1,423
Hartwell div.....	4,599	Adrian city (pt.).....	300	Thomson Rural North div.....	3,628	Tarrytown village.....	191
Hartwell city.....	4,599	Scott town.....	149	Thomson Rural South div.....	2,200	Uvalda div.....	1,795
Hartwell Rural North div.....	3,445	Balls Ferry div.....	1,566	McINTOSH COUNTY 6,364		Alston town.....	154
Hartwell Rural South div.....	3,136	Kite div.....	1,497	Darien div.....	4,288	Uvalda town.....	589
Royston div.....	2,011	Kite town.....	424	Darien city.....	1,569	MORGAN COUNTY ⁶⁸ 10,280	
Canon city (pt.).....	43	Wrightsville div.....	3,741	Townsend div.....	2,076	Bostwick div.....	1,588
Royston city (pt.).....	340	Wrightsville city ⁵⁵	2,056	Macon County 13,170		Apalachee town.....	158
Vanna town.....	152	JONES COUNTY 8,468		Ideal div.....	2,689	Bostwick town.....	272
HEARD COUNTY 5,333		Gray div.....	6,425	Ideal town ⁶²	4,321	Buckhead div.....	1,309
Centralhatchee div.....	2,321	Gray town.....	1,320	Marshallville div.....	2,482	Buckhead town.....	169
Centralhatchee town.....	174	Griswold div.....	1,084	Marshallville town.....	1,308	Godfrey div.....	1,176
Franklin div.....	1,437	Round Oak div.....	999	Montezuma div.....	5,801	Godfrey village.....	181
Corinth town.....	105	East Juliette town.....	201	Montezuma city ⁶²	3,744	Madison div.....	4,650
Franklin city ⁴⁸	603	LAMAR COUNTY ⁵⁶ 10,240		Oglethorpe div.....	2,399	Madison city.....	2,680
Texas div.....	1,575	Barnesville div.....	8,151	Oglethorpe city ⁶²	1,169	Rutledge div.....	1,557
HENRY COUNTY 17,619		Aldora town.....	535	MADISON COUNTY 11,246		Rutledge town.....	478
Hampton div.....	2,597	Barnesville city.....	4,919	Broad River div.....	1,486	MURRAY COUNTY 10,447	
Hampton city ⁴⁹	1,253	Milner div.....	2,089	Royston city (pt.).....	...	Casey Springs div.....	859
Locust Grove div.....	1,841	Milner town.....	305	Colbert div.....	3,201	Chatsworth div.....	6,161
Locust Grove town.....	369	LANIER COUNTY 5,097		Colbert town.....	425	Chatsworth city ⁶⁹	1,184
McDonough div.....	8,225	East River div.....	1,242	Hull town.....	119	Spring Place town.....	194
McDonough city ⁴⁹	2,224	Lakeland div.....	3,855	Comer div.....	2,635	Cisco div.....	1,537
Stookbridge div.....	4,946	Lakeland city.....	2,236	Comer town.....	882	Crandall-Eton div.....	1,890
Stookbridge city.....	1,201	LAURENS COUNTY 32,313		Carlton town.....	321	Crandall town.....	208
HOUSTON COUNTY 39,154		Brewton div.....	2,011	Comer town.....	882	Eton town.....	275
Elko div.....	2,667	Lovett town.....	61	Danielsville div.....	1,886	MUSCOGEE COUNTY 158,623	
Elko town.....	165	Cadwell div.....	1,617	Danielsville city.....	362	Columbus div.....	117,992
Perry div.....	9,588	Cadwell town.....	360	Ila div.....	2,038	Bibb City town.....	1,213
Perry city.....	6,032	Cedar Grove div.....	1,414	Ila city ⁶³	216	Columbus city ⁷⁰	116,779
Warner Robins div.....	18,633	Dexter div.....	1,474	Pocotalago town.....	71	Columbus South div.....	1,213
Warner Robins city ⁵⁰	18,633	Dexter town.....	399	MARION COUNTY 5,477		Edgewood div.....	2,769
Warner Robins Rural div.....	8,266	Dublin div.....	13,814	Buena Vista div.....	3,330	Fort Benning div.....	14,223
Centerville town ⁵⁰	290	Dublin city ⁵⁷	13,814	Buena Vista city.....	1,574	Genian div.....	9,391
Elberta town ⁵⁰	644	Dublin Rural div.....	3,970	North Buena Vista div.....	2,147	Midland div.....	2,305
IRWIN COUNTY 9,211		Dudley div.....	2,175	Tazewell town ⁶⁴	112	Nankipooch div.....	4,059
Holt div.....	1,558	Allentown town (pt.) ⁵⁵	MERIWETHER COUNTY 19,756		St. Marys div.....	6,671
Osnierfield town.....	82	Dudley town.....	360	Gay div.....	2,223	NEWTON COUNTY 20,999	
Irwinville div.....	1,692	Montrose town.....	236	Alvaton town.....	24	Covington div.....	12,141
Ocilla div.....	5,961	East Dublin div.....	4,063	Gay town.....	194	Covington city ⁷¹	8,167
Mystic town.....	274	East Dublin town ⁵⁴	1,677	Haralson town (pt.) ⁶⁵	20	Oxford town.....	1,047
Ocilla city.....	3,217	Minter town.....	147	Rocky Mount town.....	83	Mansfield div.....	2,968
JACKSON COUNTY 18,499		Rentz div.....	1,775	Greenville div.....	2,907	Mansfield town.....	394
Commerce div.....	5,692	Rentz town.....	307	Greenville city.....	726	Newborn town (pt.) ⁷¹	262
Commerce city ⁵¹	3,551	LEE COUNTY 6,204		Odessadale town.....	142	Porterdale div.....	5,097
Jefferson div.....	4,757	Leesburg div.....	2,509	Luthersville div.....	2,479	Porterdale town.....	2,263
Jefferson city.....	1,746	Leesburg city.....	774	Lone Oak town.....	122	Yellow River div.....	1,193
Maysville div.....	1,495	Philema div.....	1,700	Luthersville town.....	282		
Maysville town (pt.).....	209	Smithville div.....	1,995	Primrose town.....	35	OCONEE COUNTY 6,304	
Nicholson div.....	1,790	Smithville city (pt.).....	732	St. Marks town.....	28	Bogart div.....	1,822
Center town.....	137	LIBERTY COUNTY 14,487		Manchester div.....	6,493	Bogart town (pt.).....	314
Nicholson town.....	359	Hinesville div.....	10,299	Chalybeate Springs town.....	295	Elder div.....	617
South Jackson div.....	1,526	Flemington town.....	149	Manchester city ⁶⁵	4,115	Watkinsville div.....	3,865
Arcade city.....	108	Hinesville town.....	149	Raleigh city.....	55	Bishop town.....	214
West Jackson div.....	3,239	Hinesville town ⁵⁸	3,174	Warm Springs div.....	3,090	Eastville town.....	107
Braselton town.....	255	Midway div.....	2,141	Durand town.....	195	Farmington city.....	151
Hosenton town.....	370	Midway city ⁵⁸	240	Warm Springs city.....	538	Farmington town.....	122
Pendergrass town.....	215	Riceboro div.....	2,047	White Sulphur Springs town.....	156	North High Shoals town.....	122
Talmo town.....	162	Riceboro city.....	259	Woodbury div.....	2,564	Watkinsville town.....	758
				Woodbury town.....	1,230		

The revised population total for Denton is 255. The figure in the table includes population for an area misclassified as inside, rather than outside, the city limits. This error was discovered too late for correction in the detailed distributions. See other footnotes at end of table, p. 19.

Table 7.—POPULATION OF COUNTIES, BY CENSUS COUNTY DIVISIONS: 1960—Con.
 ["U" denotes an unincorporated place. Total population of a place located in 2 or more census county divisions appears in table 8]

County and census county division	Population	County and census county division	Population	County and census county division	Population	County and census county division	Population
OGLETHORPE COUNTY	7,926	RANDOLPH COUNTY	11,078	SUMTER COUNTY--Con.		TIFT COUNTY--Con.	
Lexington-Crawford div.....	4,723	Benevolence-Springvale div.....	1,819	Leslie-De Soto div.....	2,714	Tifton div.....	9,903
Crawford city.....	541	Benevolence town.....	123	Cobb town ⁸¹	90	Tifton city ⁸⁷	9,903
Lexington town.....	376	Springvale town.....	57	De Soto village.....	282	Ty Ty div.....	1,678
Smithonia town.....	30	Carnegie-Coleman div.....	1,886	Leslie village.....	494	Ty Ty town.....	461
Maxeys div.....	1,402	Carnegie town.....	113	Plains div.....	3,032		
Maxeys town.....	149	Coleman town.....	220	Plains town.....	572		
Vesta-Enterprise div.....	1,801	Cuthbert div.....	4,300			TOOMBS COUNTY	16,837
		Cuthbert city.....	4,300	TALBOT COUNTY	7,127	Lyons div.....	5,593
PAULDING COUNTY	13,101	Shellman div.....	3,073	Junction City div.....	1,971	Lyons city.....	3,219
Dallas div.....	5,808	Shellman city.....	1,050	Geneva town.....	226	Choopee village.....	51
Dallas city ⁷²	2,065			Junction City town.....	226	Santa Claus city ⁸⁸	5
Hiram div.....	3,251	RICHMOND COUNTY	135,601	Talbotton city.....	2,641	Toombs Central div.....	2,281
Hiram city ⁷²	358	Augusta div.....	70,626	Talbotton city ⁸²	1,163	Vidalia div.....	8,963
Huntsville div.....	1,499	Augusta city ⁷⁷	70,626	Woodland div.....	2,515	Charles city.....	50
Braswell town.....	14	Camp Gordon div.....	10,272	Woodland town.....	720	Normantown town.....	49
Yorkville div.....	2,543	Forest Hills div.....	6,460			Vidalia city.....	7,569
		Gracewood div.....	1,913	TALIAFERRO COUNTY	3,370		
PEACH COUNTY	13,846	Hephzibah div.....	3,540	Crawfordville div.....	2,309	TOWNS COUNTY	4,538
Byron div.....	2,512	Blythe town (pt.).....	170	Crawfordville city.....	786	Hiwassee div.....	1,688
Byron town.....	1,138	Lakemont div.....	5,837	Sharon div.....	1,061	Hiwassee town.....	455
Fort Valley div.....	11,334	Neco div.....	20,392	Sharon city.....	264	Macedonia div.....	1,072
Fort Valley city.....	8,510	South Nellsville div.....	4,006			Young Harris div.....	1,778
		Turpin Place div.....	7,189	TATTNALL COUNTY	15,837	Young Harris town.....	743
		Tuxedo Park div.....	5,366	Collins div.....	3,105		
PICKENS COUNTY	8,903			Cobbtown city.....	280	TREUTLEN COUNTY	5,874
Jasper div.....	2,880	ROCKDALE COUNTY	10,572	Collins city.....	565	Gillis Springs div.....	1,003
Jasper city ⁷⁴	1,036	Middle Rockdale div.....	6,797	Glennville div.....	6,496	Soperton div.....	4,871
Ludville div.....	1,258	Conyers city.....	2,881	Glennville city.....	2,791	Soperton city.....	2,317
Talking Rock div.....	1,356	Milstead (U).....	1,047	Reidsville div.....	6,236		
Talking Rock town.....	84	North Rockdale div.....	1,738	Manassas city.....	154	TROUP COUNTY	47,189
Tate div.....	3,409	South Rockdale div.....	2,037	Reidsville city.....	1,229	Abbottsford div.....	703
Nelson city (pt.) ⁷⁴	541					Hillcrest div.....	2,115
		SCHLEY COUNTY	3,256	TAYLOR COUNTY	8,311	Hogansville div.....	5,911
PIERCE COUNTY	9,678	Ellaville div.....	3,256	Butler div.....	3,162	Hogansville city.....	3,658
Blackshear div.....	5,876	Ellaville city.....	905	Butler town.....	1,346	La Grange div.....	23,632
Blackshear city.....	2,482			Carsonville-Panhandle div.....	1,743	La Grange city.....	23,632
Bristol div.....	1,502	SCREVEN COUNTY	14,919	Carsonville city ⁸³	52	Mountainville div.....	139
Bristol town.....	162	Hilltonia div.....	1,378	Reynolds div.....	2,504	Mountainville town.....	126
Patterson div.....	2,300	Hilltonia town.....	353	Reynolds town.....	1,087	Oak Grove div.....	1,266
Patterson town.....	719	Millhaven div.....	1,479	Rupert div.....	902	Pleasant Grove div.....	2,567
		Newington div.....	2,628			Tatum div.....	2,865
PIKE COUNTY	7,138	Newington town.....	399	TELFAIR COUNTY	11,715	West Point div.....	6,054
Concord-Molena div.....	1,990	Oliver city.....	192	Jacksonville div.....	1,258	West Point city (pt.) ⁸⁵	4,034
Concord town.....	333	Rocky Ford div.....	2,074	Jacksonville town ⁸⁴	236		
Molena city.....	279	Rocky Ford town.....	241	Lumber City div.....	1,996	TURNER COUNTY	8,439
Meansville div.....	1,619	Sylvania div.....	7,360	Lumber City (pt.) ⁸⁴	1,360	Ashburn div.....	3,291
Meansville town.....	335	Sylvania city.....	3,469	McRae-Helena div.....	4,028	Ashburn city.....	3,291
Williamson div.....	1,156			Helena town.....	1,290	Rebecca div.....	1,139
Williamson town.....	215	SEMINOLE COUNTY	6,802	McRae city ⁸⁴	2,738	Rebecca town.....	278
Zebulon div.....	2,373	Donalsonville div.....	2,621	McRae-Helena Rural div.....	2,135	Sycamore div.....	2,514
Zebulon city.....	563	Donalsonville city.....	2,621	Scotland town (pt.).....	214	Sycamore city.....	501
		Iron City div.....	1,880	Towns town.....	91	Worth div.....	1,495
		Iron City town.....	298	Towns town.....	91		
FOLK COUNTY	28,015	Steam Mill div.....	2,301	Milan div.....	2,298	TWIGGS COUNTY	7,935
Aragon div.....	3,385			Milan town (pt.).....	419	Danville div.....	2,220
Aragon (U).....	1,023	SPALDING COUNTY	35,404	TERRELL COUNTY ⁸⁵	12,742	Allentown town (pt.) ⁸⁶	195
Taylorville town (pt.).....	27	Experiment div.....	2,497	Bronwood div.....	1,407	Danville town (pt.).....	2,433
Cedartown div.....	9,340	Experiment (U).....	2,497	Bronwood town.....	400	Dry Branch div.....	2,433
Cedartown city.....	9,340	Griffin div.....	21,735	Dawson div.....	8,062	Jeffersonville div.....	3,282
Cedartown Rural North div.....	3,576	Griffin city ⁷⁸	21,735	Dawson city.....	5,062	Jeffersonville city.....	1,013
Cedartown Rural South div.....	4,005	Orchard Hill-Ringgold div.....	4,260	Parrott div.....	1,627		
Rockmart div.....	7,709	East Griffin (U).....	1,715	Parrott town.....	280	UNION COUNTY	6,510
Rockmart city ⁷⁵	3,938	Orchard Hill town.....	105	Sasser div.....	1,646	Blairsville North div.....	3,374
		Rover-Zetella div.....	2,391	Sasser town.....	382	Blairsville town.....	437
PULASKI COUNTY	8,204	Sunnyside-Birdie div.....	4,521			Blairsville South div.....	2,452
Finleyson div.....	1,748	Sunnyside village.....	190	THOMAS COUNTY	34,319	Suchs div.....	684
Finleyson town.....	82			Boston div.....	2,947		
Hartford div.....	1,217	STEPHENS COUNTY	18,391	Boston city.....	1,357	UPSON COUNTY	23,800
Hawkinsville div.....	5,239	Broad River div.....	5,408	Coolidge div..... ⁸⁴	2,140	Atwater div.....	3,052
Hawkinsville city.....	3,967	Avalon town.....	194	Coolidge city.....	679	East Thomaston div.....	2,237
		Martin town.....	209	Merrillville town.....	111	East Thomaston village.....	2,237
PUTNAM COUNTY	7,798	Rock Creek div.....	3,545	Meigs div.....	1,914	Gordon div.....	3,479
Eatonton div.....	3,612	Toccoa div..... ⁸³	7,303	Meigs town (pt.).....	1,195	Lincoln Park (U).....	1,840
Eatonton city.....	3,612	Toccoa city.....	7,303	Meigs town (pt.).....	1,195	The Rock-Yatesville div.....	3,841
Glades div.....	1,334	Toccoa Creek div.....	2,135	Metcalfe div.....	241	The Rock town.....	115
Little River div.....	1,393			Metcalfe town.....	241	Yatesville town.....	354
Phoenix div.....	1,459	STEWART COUNTY	7,371	Ochlocknee div.....	1,984	Yatesville city.....	9,336
		Lumpkin div.....	2,997	Ochlocknee town.....	502	Thomaston div.....	9,336
QUITMAN COUNTY	2,432	Lumpkin city ⁸⁶	1,348	Pavo-Barwick div.....	2,518	Thomaston city ⁹¹	9,336
Georgetown div.....	2,432	Omaha div.....	1,575	Barwick town (pt.).....	232	Thurston div.....	1,855
Georgetown town ⁷⁶	554	Omaha town.....	174	Pavo city (pt.) ⁸⁶	552		
		Richland div.....	2,799	Thomasville div..... ⁸⁶	18,246	WALKER COUNTY ⁹²	45,264
		Richland city.....	1,472	Thomasville city ⁸⁶	18,246	Beverly Hills div.....	6,874
RABUN COUNTY	7,456			Thomasville Rural North div.....	2,264	Fort Oglethorpe town (pt.).....	59
Clayton div.....	3,752	SUMTER COUNTY	24,652			Chattanooga Valley div.....	7,093
Clayton city.....	1,507	Americus div..... ⁸⁷	13,735	TIFT COUNTY	23,487	Chickamauga div.....	7,460
Tiger div.....	1,722	Americus city.....	13,472	Brookfield div.....	1,632	Chickamauga city.....	1,824
Tallulah Falls town (pt.).....	54	Americus Rural div.....	3,441	Chula div.....	1,601	Fairylnd div.....	2,479
Tiger town.....	277	Smithville city (pt.).....	...	North Tifton div.....	1,601	Kensington div.....	1,764
Valley div.....	1,982	Andersonville div.....	1,730	Oak Ridge div.....	1,170	La Fayette-Linwood div.....	6,348
Dillard town.....	204	Andersonville village.....	263	Oak Ridge town.....	1,870	La Fayette city.....	5,588
Mountain City town.....	550			Linwood town.....	15	Linwood town.....	760
				Phillipsburg (U) (pt.).....	51	La Fayette Rural North div.....	2,238
				Unionville (U) (pt.).....	1,832	La Fayette Rural South div.....	3,006
				Omega div..... ⁸⁷	940	Rock Spring div.....	2,341
				Omega city..... ⁸⁷	3,801	Rossville div.....	4,665
				Phillipsburg-Unionville div.....	2,022	Rossville city ⁸⁸	4,665
				Phillipsburg (U) (pt.).....	1,556	Willanow div.....	996
				Unionville (U) (pt.).....	1,556		

See footnotes at end of table, p. 19.

Table 7.—POPULATION OF COUNTIES, BY CENSUS COUNTY DIVISIONS: 1960—Con.
 ["U" denotes an unincorporated place. Total population of a place located in 2 or more census county divisions appears in table 8]

County and census county division	Population	County and census county division	Population	County and census county division	Population	County and census county division	Population
WALTON COUNTY.....	20,481	WARREN COUNTY--Con.		WHEELER COUNTY.....	5,342	WILKES COUNTY.....	10,961
Campton div.....	1,920	Panhandle div.....	596	Alamo div.....	2,676	Rayle div.....	1,914
Campton town.....	200	Warrenton div.....	2,807	Alamo city ⁹⁸	822	Tignall div.....	2,239
Gratis town.....	64	Warrenton city ⁹⁸	1,770	Scotland town (pt.).....	22	Danburg town.....	108
Good Hope div.....	2,261	WASHINGTON COUNTY.....	18,903	Glenwood div.....	2,666	Tignall town.....	556
Good Hope town.....	165	Davisboro div.....	3,064	Glenwood city ⁹⁸	682	Washington-Metasville div.....	6,808
Jersey div.....	1,839	Davisboro city.....	417	Lumber City (pt.) ⁹⁸	Metasville town.....	73
Jersey town.....	170	Riddleville town.....	111	WHITE COUNTY.....	6,935	Washington city.....	4,440
Walnut Grove town.....	119	Deepstep div.....	1,302	Cleveland div.....	3,733	WILKINSON COUNTY.....	9,250
Loganville div.....	2,706	Deepstep town.....	139	Cleveland city.....	657	Allentown div.....	1,676
Between town.....	80	Harrison div.....	1,567	Helen div.....	1,196	Allentown town (pt.) ¹⁰⁰	255
Loganville city (pt.).....	822	Harrison town.....	209	Helen town.....	227	Danville town (pt.).....	264
Monroe div.....	8,618	Sandersville div.....	5,425	Mossy Creek div.....	2,006	Gordon div.....	2,960
Monroe city ⁹³	6,826	Sandersville city ⁹⁶	5,425	WHITFIELD COUNTY.....	42,109	Gordon town.....	1,793
Social Circle div.....	3,137	Sandersville Rural div.....	1,706	Dalton div.....	17,868	Ivey town.....	48
Social Circle city.....	1,780	Tennille div.....	4,433	Dalton city ⁹⁹	17,868	Irwin div.....	3,186
WARE COUNTY.....	34,219	Tennille city ⁹⁶	1,837	North Central div.....	7,667	Irwin town.....	673
Dixie Union div.....	1,487	Warthen div.....	1,406	North Whitfield div.....	2,913	McIntyre town.....	316
Beach town.....	53	WAYNE COUNTY.....	17,921	Valley Point div.....	9,958	Toombs div.....	1,428
Manor div.....	1,089	Jesup div.....	12,618	Westside div.....	3,703	Toombs town.....	764
North Waycross div.....	4,050	Jesup city ⁹⁷	7,304	WILCOX COUNTY.....	7,905	BRIDGEBORO COUNTY.....	16,682
Hebardville (U).....	2,758	Odum div.....	2,593	Abbeville div.....	2,003	Bridgeboro div.....	1,952
South Waycross div.....	3,689	Odum town.....	404	Abbeville city.....	872	Poulan div.....	2,929
Wareboro div.....	2,960	Screven div.....	2,710	Pineview town.....	1,288	Poulan city.....	736
Waycross div.....	20,944	Screven town.....	1,010	Pineview city.....	369	Summer div.....	1,504
Waycross city ⁹⁴	20,944	WEBSTER COUNTY.....	2,247	Pitts div.....	1,798	Summer town.....	193
WARREN COUNTY.....	7,360	Preston div.....	1,584	Pitts town.....	388	Sylvester div.....	7,042
Camak div.....	1,162	Preston town.....	232	Seville town.....	179	Sylvester city ¹⁰¹	3,610
Camak town.....	285	Weston div.....	1,663	Rochelle div.....	2,816	Warwick div.....	3,255
Norris div.....	1,301	Weston town.....	120	Rochelle city.....	1,235	Oakfield town.....	141
Norwood div.....	1,494					Warwick town.....	434
Norwood city.....	294						

- 1 BACON.--Annexation to Alma city.
- 2 BALDWIN.--Annexation to and detachment from Milledgeville city.
- 3 BANKS.--Bellton and Lula towns consolidated and designated as Lula city.
- 4 BARTOW.--Adairsville and Kingston towns changed to cities since 1950. Annexations to Cartersville city.
- 5 BEN HILL.--Annexations to Fitzgerald city.
- 6 BIBB.--Annexations to Macon city.
- 7 BROOKS.--Pavo town changed to city since 1950.
- 8 BULLOCH.--Annexations to Statesboro city.
- 9 BURKE.--Annexations to Waynesboro city.
- 10 BUTTS.--Annexations to Jackson city.
- 11 CALHOUN.--Leary town changed to city since 1950.
- 12 GAMDEN.--Woodbine town changed to city since 1950. Annexations to St. Marys city.
- 13 CARROLL.--Villa Rica city returned in 1950 as a town. Villa Rica city annexed Fullersville town and other area. Bowdon town changed to city since 1950. Annexations to Bowdon city and Carrollton city.
- 14 CATOUGA.--Annexation to Fort Oglethorpe town. Ringgold town changed to city since 1950.
- 15 CHATHAM.--Barnwell Island, Beaufort County, S.C., ceded to Chatham County, Ga., by Federal action in 1958. Annexations to Garden City and Pooler towns. Port Wentworth city incorporated since 1950. Annexations to and detachments from Savannah city. Vernonburg town not returned separately in 1950.
- 16 CHEROKEE.--Ball Ground, Nelson, Waleska, Canton, Holly Springs, and Woodstock towns changed to cities since 1950.
- 17 CLARKE.--Annexations to Athens city and Winterville city. Winterville town changed to city since 1950.
- 18 CLAYTON.--Lake Tara town disincorporated since 1950. Annexations to College Park, Riverdale, and Jonesboro cities and Forest Park town. Lake city incorporated since 1950. Riverdale town changed to city since 1950.
- 19 COBB.--Annexations to Marietta, Acworth, and Austell cities and Smyrna and Kenneway towns.
- 20 COFFEE.--Ambrose city incorporated since 1950. Annexations to Douglas city.
- 21 COLQUITT.--Annexations to Moultrie city.
- 22 COLUMBIA.--Harlem town changed to city since 1950. Grovetown city not returned separately in 1950.
- 23 COOK.--Annexations to Adel city.
- 24 COWETA.--Annexations to Newman city. Grantville town changed to city since 1950.
- 25 CRAWFORD.--Annexation to Roberts city.
- 26 CRISP.--Annexations to Cordele city.
- 27 DADE.--Boundary between Dade and Walker Counties adjusted since 1950.
- 28 DECATUR.--Annexations to Bainbridge city.
- 29 DE KALB.--North Atlanta town changed to village since 1950. Annexations to Doraville and Chamblee cities.
- 30 DODGE.--Empire town disincorporated since 1950. Annexations to Eastman city.
- 31 DOUGHERTY.--Annexations to Albany city.
- 32 DOUGLAS.--Winston town disincorporated since 1950. Douglasville town changed to city since 1950. Villa Rica city returned in 1950 as a town. Annexation to Villa Rica and Austell cities.
- 33 EFFINGHAM.--Pineora city incorporated since 1950.
- 34 EMANUEL.--Summertown town disincorporated prior to 1950; information received too late to exclude from tabulation. Coleman Lake city incorporated since 1950.
- 35 FAYETTE.--Annexation to Fayetteville city.
- 36 FLOYD.--Annexations to and detachments from Rome city.
- 37 FRANKLIN.--Annexations to Carnesville city and Franklin Springs city.
- 38 FULTON.--Roswell town changed to city since 1950. Annexations to Roswell, College Park, East Point, and Hapeville cities. Annexations to and detachments from Atlanta city. Part of East Point city detached and area annexed to College Park city.
- 39 GLASCOCK.--Edge Hill city not returned separately in 1950.
- 40 GLYNN.--Annexation to Brunswick city.
- 41 GORDON.--Annexations to Calhoun city.
- 42 GRADY.--Whigham town changed to city since 1950. Annexations to Cairo city.
- 43 GREENE.--Part of Greene County annexed to Morgan County.
- 44 GWINNET.--Annexations to Lawrenceville city. Berkeley Lake and Lilburn cities incorporated since 1950.
- 45 HABERSHAM.--Clarksville city returned as Clarksville in 1950. Annexations to Cornelia city.
- 46 HALL.--Annexations to Clermont town and Gainesville city. Lula and Bellton towns consolidated and designated as Lula city.

- 47 HARRIS.--Chipley town changed to Pine Mountain town since 1950. Annexations to West Point city.
- 48 HEARD.--Annexations to Franklin city.
- 49 HENRY.--Annexations to McDonough city and Hampton city.
- 50 HOUSTON.--Centerville and Elberta towns incorporated since 1950. Warner Robins town changed to city since 1950. Annexations to and detachment from Warner Robins city.
- 51 JACKSON.--Annexation to Commerce city.
- 52 JASPER.--Newborn town returned in Newton County only in 1950.
- 53 JEFF DAVIS.--Annexations to and detachments from Hazlehurst city.
- 54 JEFFERSON.--Stellaville town disincorporated since 1950.
- 55 JOHNSON.--Annexation to Wrightsville city.
- 56 LAMAR.--Piedmont town disincorporated prior to 1950; information received too late to exclude from tabulation.
- 57 LAURENS.--Annexations to Dublin city. Allentown town not returned separately in 1950. East Dublin town incorporated since 1950.
- 58 LIBERTY.--Midway town changed to city since 1950. Annexations to and detachments from Hinesville town.
- 59 LONG.--Annexations to Ludowici city.
- 60 LOWMEDES.--Annexations to Hahira and Valdosta cities. Hahira town changed to city since 1950. Remerton town incorporated since 1950.
- 61 McDUFFIE.--Annexations to Thomson city.
- 62 MACON.--Annexations to Ideal town and Montezuma city. Detachment from Oglethorpe city.
- 63 MADISON.--Ila town changed to city since 1950.
- 64 MARION.--Tazewell town incorporated since 1950.
- 65 MERIWETHER.--Haralson town returned in Coweta County only in 1950. Annexation to and detachment from Manchester city.
- 66 MITCHELL.--Baconton town changed to city since 1950.
- 67 MONTGOMERY.--Annexation to Ailey town.
- 68 MORGAN.--Part of Green County annexed to Morgan County.
- 69 MURRAY.--Annexations to Chatsworth city.
- 70 MUSCOGEE.--Annexations to Columbus city.
- 71 NEWTON.--Newborn town returned in Newton County only in 1950. Annexations to Covington city.
- 72 PAULDING.--Dallas and Hiram towns changed to cities since 1950.
- 73 PEACH.--Annexation to Byron town.
- 74 PICKENS.--Nelson and Jasper towns changed to cities since 1950.
- 75 POLK.--Annexations to Rockmart and Cedartown cities.
- 76 QUITMAN.--Georgetown town returned in 1950 as a village.
- 77 RICHMOND.--Annexations to Augusta city.
- 78 SPALDING.--Annexations to Griffin city.
- 79 STEPHENS.--Annexations to Toococa city.
- 80 STEWART.--Annexation to Lumpkin city.
- 81 SUMNER.--Cobb town not returned separately in 1950. Annexations to Americus city.
- 82 TALBOT.--Talbot town changed to city since 1950. That part of Manchester city in Talbot County detached; city is now in Meriwether County only.
- 83 TALLADEGA.--Carsonville city incorporated since 1950.
- 84 TELFAIR.--Annexation to McRae city. Lumber City town changed to city since 1950. Jacksonville town not returned separately in 1950.
- 85 TERRELL.--Herod town disincorporated.
- 86 THOMAS.--Pavo and Coolidge towns changed to cities since 1950. Annexations to Thomasville city.
- 87 TIFT.--Annexations to Tifton city. Omega town changed to city since 1950.
- 88 TOMBS.--Santa Claus city not returned separately in 1950.
- 89 TROUP.--Annexations to West Point city.
- 90 TROTS.--Allentown town not returned separately in 1950.
- 91 UPSON.--Thomaston city annexed Silvertown city and other area.
- 92 WALKER.--Annexations to Rossville city. Boundary between Dade and Walker Counties adjusted since 1950.
- 93 WALTON.--Annexations to Monroe city.
- 94 WARE.--Annexations to Waycross city.
- 95 WARREN.--Annexations to and detachments from Warrenton city.
- 96 WASHINGTON.--Annexations to Tennille and Sandersville cities.
- 97 WARNE.--Annexations to Jesup city.
- 98 WHEELER.--Glenwood town changed to city since 1950. Lumber City returned in Telfair County only in 1950. Alamo town changed to city since 1950.
- 99 WHITFIELD.--Annexations to Dalton city.
- 100 WILKINSON.--Allentown town not returned separately in 1950.
- 101 WORTH.--Annexations to Sylvester city.

Table 8.—POPULATION OF ALL INCORPORATED PLACES AND OF UNINCORPORATED PLACES OF 1,000 OR MORE: 1940 TO 1960

["U" denotes an unincorporated place. Asterisk (*) denotes an incorporated place under 2,500 located in an urbanized area]

Place	County	1960	1950	1940	Place	County	1960	1950	1940
Abbeville.....	Wilcox.....	872	890	1,010	Cadwell.....	Laurens.....	360	310	291
Acworth.....	Cobb.....	2,359	1,466	1,267	Cairo.....	Grady.....	7,427	5,577	4,653
Adairsville.....	Bartow.....	1,026	916	827	Calhoun.....	Gordon.....	3,587	3,231	2,955
Adel.....	Cook.....	4,321	2,776	2,134	Camak.....	Warren.....	285	379	360
Adrian.....	Emanuel.....	568	503	580	Camilla.....	Mitchell.....	4,753	3,745	2,588
	Johnson.....				Campton.....	Walton.....	200	163	190
Alley.....	Montgomery.....	469	508	506	Canon.....	Franklin.....	626	596	496
Alamo.....	Wheeler.....	822	800	646	Canoochee.....	Hart.....	30	62	53
Alapaha.....	Berrien.....	631	505	494	Canton.....	Cherokee.....	2,411	2,716	2,651
Albany.....	Dougherty.....	55,890	31,155	19,055	Carl.....	Barrow.....	204	214	135
Aldora.....	Lamar.....	535	591	746	Carlton.....	Madison.....	321	249	284
	Laurens.....				Carnegie.....	Randolph.....	113	197	262
Allentown.....	Twiggs.....	450	Carnesville.....	Franklin.....	481	349	361
	Wilkinson.....				Carrollton.....	Carroll.....	10,973	7,753	6,214
Alma.....	Bacon.....	3,515	2,588	1,840	Carsonville.....	Taylor.....	52
Alpharetta.....	Fulton.....	1,349	917	647	Cartersville.....	Bartow.....	8,668	7,270	6,141
Alston.....	Montgomery.....	154	147	213	Cave Springs.....	Floyd.....	1,153	959	982
Alto.....	Banks.....	275	302	217	Cecil.....	Cook.....	279	254	216
	Habersham.....				Cedar town.....	Polk.....	9,340	9,470	9,025
Alto Park (U).....	Floyd.....	2,526	1,195	...	Celene (U).....	Floyd.....	1,500	1,945	...
Alvaton.....	Meriwether.....	24	95	109	Center.....	Jackson.....	137	112	109
Ambrose.....	Coffee.....	244	Centerville.....	Houston.....	290
Americus.....	Sumter.....	13,472	11,389	9,281	Centralhatchee.....	Heard.....	174	239	201
Andersonville.....	Sumter.....	263	281	211	Chalybeate Springs.....	Meriwether.....	295	255	113
Apalachee.....	Morgan.....	158	178	255	Chamblee.....	De Kalb.....	6,635	3,445	1,081
Arabi.....	Crisp.....	303	376	388	Charles.....	Toombs.....	50	20	38
Arden (U).....	Polk.....	1,023	1,272	98	Chatsworth.....	Murray.....	1,184	1,214	1,001
Arcade.....	Jackson.....	108	114	278	Chauncey.....	Dodge.....	330	348	387
Argyle.....	Clinch.....	225	244	278	Chester.....	Dodge.....	377	315	281
	Calhoun.....				Chickamauga.....	Walker.....	1,824	1,747	1,665
Arlington.....	Early.....	1,462	1,382	1,337	Clarkeville.....	Habersham.....	1,352	1,106	850
Ashburn.....	Turner.....	3,291	2,918	2,266	Clarkston*.....	De Kalb.....	1,524	1,165	921
Athens.....	Clarke.....	31,355	28,180	20,650	Claxton.....	Evans.....	2,672	1,923	1,808
Atlanta.....	De Kalb.....	487,455	331,314	302,288	Clayton.....	Rabun.....	1,507	1,302	1,088
	Fulton.....				Clermont.....	Hall.....	268	323	297
Attapulgus.....	Decatur.....	567	457	315	Cleveland.....	White.....	657	589	471
Auburn.....	Barrow.....	374	301	286	Climax.....	Decatur.....	329	373	372
Augusta.....	Richmond.....	70,626	71,508	65,919	Cobb.....	Sumter.....	90
Austell.....	Cobb.....	1,867	1,413	1,229	Cobbtown.....	Tattnall.....	280	288	275
Avalon.....	Douglas.....	194	151	113	Cochran.....	Bleckley.....	4,714	3,357	2,464
Avera.....	Stephens.....	197	230	298	Colbert.....	Madison.....	425	407	345
Avondale Estates*.....	Jefferson.....	197	230	298	Coleman.....	Randolph.....	220	295	270
Baconton.....	De Kalb.....	1,646	1,070	569	Colemans Lake.....	Emanuel.....	34
Bainbridge.....	Mitchell.....	564	500	504	College Park.....	Clayton.....	23,469	14,535	8,213
Baldwin.....	Decatur.....	12,714	7,562	6,352	Collins.....	Fulton.....	565	638	712
	Banks.....				Colquitt.....	Tattnall.....			
Ball Ground.....	Habersham.....	698	490	402	Colquitt.....	Miller.....	1,556	1,664	1,416
	Cherokee.....				Columbus.....	Muscogee.....	116,779	79,611	53,280
Barnesville.....	Lamar.....	4,919	4,185	3,535	Comer.....	Madison.....	882	882	811
Barney.....	Brooks.....	165	157	154	Commerce.....	Jackson.....	3,551	3,351	3,294
Barrow.....	Jefferson.....	366	347	438	Concord.....	Pike.....	333	360	403
Barwick.....	Brooks.....	400	436	409	Conyers.....	Rockdale.....	2,881	2,003	1,619
	Thomas.....				Coolidge.....	Thomas.....	679	764	608
Baxley.....	Appling.....	4,268	3,409	2,916	Cordele.....	Crisp.....	10,609	9,462	7,929
Besch.....	Ware.....	53	62	87	Corinth.....	Heard.....	105	135	144
Benevolence.....	Randolph.....	123	157	190	Cornelia.....	Habersham.....	2,936	2,424	1,808
Berkeley Lakes.....	Gwinnett.....	94	Cotton.....	Mitchell.....	108	146	125
Berlin.....	Colquitt.....	419	309	322	Covington.....	Newton.....	8,167	5,192	3,900
Bethlehem.....	Barrow.....	297	240	242	Crawall.....	Murray.....	208	202	213
Between.....	Walton.....	80	120	115	Crawford.....	Oglethorpe.....	541	555	812
Bibb City*.....	Muscogee.....	1,213	1,452	1,631	Crawfordville.....	Taliaferro.....	786	966	1,056
Bishop.....	Oconee.....	214	253	217	Crosland.....	Colquitt.....	95	127	220
Blackshear.....	Pierce.....	2,482	2,271	2,010	Culloden.....	Monroe.....	260	261	251
Blainsville.....	Union.....	437	430	458	Cumming.....	Forsyth.....	1,264	1,264	958
Blakely.....	Early.....	3,580	3,234	2,774	Cusseta.....	Chattahoochee.....	768	571	357
Bloomfield Gardens (U).....	Bibb.....	4,381	Cuthbert.....	Randolph.....	4,300	4,025	3,447
Blue Ridge.....	Fannin.....	1,406	1,718	1,362	Dacula.....	Gwinnett.....	440	369	315
Bluffton.....	Clay.....	176	244	246	Dahlonega.....	Lumpkin.....	2,604	2,152	1,294
Blythe.....	Burke.....	172	268	181	Daisy.....	Evans.....	229	195	294
	Richmond.....				Dallas.....	Paulding.....	2,065	1,817	1,922
Bogart.....	Clarke.....	403	459	379	Dalton.....	Whitfield.....	17,868	15,968	10,448
Boston.....	Oconee.....	1,357	1,035	1,099	Damascus.....	Early.....	297	402	477
Postwick.....	Thomas.....	272	287	318	Danburg.....	Wilkes.....	108	181	203
Bowdon.....	Morgan.....	1,548	1,155	1,024	Danielsville.....	Madison.....	362	298	333
Bowersville.....	Carroll.....	293	303	284	Danville.....	Twiggs.....	264	461	423
Bowman.....	Hart.....	654	714	634	Darien.....	Wilkinson.....	1,569	1,380	1,015
Boykin.....	Elbert.....	601	120	118	Deatsboro.....	McIntosh.....	417	469	533
Braselton.....	Miller.....	255	165	197	Dawson.....	Washington.....	5,062	4,411	3,681
Braswell.....	Jackson.....	14	25	56	Dawsonville.....	Dawson.....	307	318	319
Bremen.....	Paulding.....	3,132	2,289	1,708	Dearying.....	McDuffie.....	403	325	273
Brinson.....	Haralson.....	246	249	305	Deatur.....	De Kalb.....	22,026	21,635	16,561
Bristol.....	Decatur.....	162	137	114	Deepstep.....	Washington.....	139	159	174
Brownwood.....	Pierce.....	400	437	503	Demorest.....	Habersham.....	1,029	1,166	820
Brooklet.....	Terrell.....	557	536	503	Denton.....	Jeff Davis.....	1,726	273	254
Brooks.....	Bulloch.....	158	136	134	De Soto.....	Sumter.....	282	309	295
Broxton.....	Fayette.....	907	890	908	Dexter.....	Laurens.....	359	264	324
Brunswick.....	Coffee.....	21,703	17,954	15,035	Dickey.....	Calhoun.....	76	135	115
Buchanan.....	Glynn.....	753	651	504	Dillard.....	Rabun.....	204	186	204
Buckhead.....	Haralson.....	169	220	214	Dixie.....	Brooks.....	200	261	221
Buena Vista.....	Morgan.....	1,574	1,428	1,161	Doek Junction (U).....	Glynn.....	5,417	4,160	...
Burford.....	Marion.....	4,168	3,812	4,191	Doerun.....	Colquitt.....	1,037	902	832
Butler.....	Gwinnett.....	1,346	1,182	1,093	Donaldsonville.....	Seminole.....	2,621	2,569	1,718
Byromville.....	Taylor.....	349	288	275					
Byron.....	Dooley.....	1,138	379	305					

The revised population total for Denton is 255. The figure in the table includes population for an area misclassified as inside, rather than outside, the city limits. This error was discovered too late for correction in the detailed distributions.

Table 8.—POPULATION OF ALL INCORPORATED PLACES AND OF UNINCORPORATED PLACES OF 1,000 OR MORE: 1940 TO 1960—Con.

["U" denotes an unincorporated place. Asterisk (*) denotes an incorporated place under 2,500 located in an urbanized area]

Place	County	1960	1950	1940	Place	County	1960	1950	1940
Doraville	De Kalb	4,437	472	300	Hephzibah	Richmond	676	525	516
Douglas	Coffee	8,736	7,428	5,175	Hiawassee	Towns	455	375	163
Douglasville	Douglas	4,462	3,400	2,555	Hickox	Brantley	71	139	83
Dublin	Laurens	13,814	10,232	7,814	Higgston	Montgomery	151	155	141
Ducktown	Forsyth	49	58	51	Hilltonia	Screven	353	318	246
Dudley	Laurens	360	272	259	Hinesville	Liberty	3,174	1,217	630
Duluth	Gwinnett	1,483	842	626	Hiram	Paulding	358	299	282
Du Pont	Glinch	210	285	332	Hoboken	Brantley	552	492	386
Durand	Meriwether	195	186	181	Hogansville	Troup	3,658	3,769	3,886
East Dublin	Laurens	1,677	Holly Springs	Cherokee	475	386	256
East Ellijay	Gilmer	501	549	460	Homeland	Charlton	508	276	213
East Griffin (U)	Spalding	1,715	1,539	...	Homer	Banks	612	340	283
East Juliette	Jones	201	303	321	Homerville	Clinch	1,787	1,522	1,522
Eastman	Dodge	5,118	3,597	3,311	Hoschton	Jackson	370	378	364
East Point	Fulton	35,633	21,080	12,403	Howell	Echols	141	169	174
East Thomaston	Upson	2,237	3,082	3,590	Hull	Madison	119	153	133
Eastville	Oconee	107	96	132	Ideal	Macon	432	318	238
Eatonton	Putnam	3,612	2,749	2,399	Ila	Madison	216	225	224
Edge Hill	Glascock	55	Iron City	Seminole	298	293	289
Edison	Calhoun	1,232	1,247	1,241	Irwinton	Wilkinson	673	700	589
Elberta	Houston	644	Ivey	Wilkinson	48	46	...
Elberton	Elbert	7,107	6,772	6,188	Jackson	Butts	2,545	2,053	1,917
Elizabeth (U)	Cobb	1,620	1,067	...	Jacksonville	Telfair	236
Elko	Houston	165	188	189	Jakin	Early	176	264	264
Ellaville	Schley	905	886	928	Jasper	Pickens	1,036	1,380	576
Ellenton	Colquitt	385	429	427	Jefferson	Jackson	1,746	2,040	1,839
Ellijay	Gilmer	1,320	1,527	1,497	Jeffersonville	Twiggs	1,013	787	804
Emerson	Barrow	666	508	453	Jenkinsburg	Butts	233	166	166
Enigma	Berrien	525	499	529	Jersey	Walton	170	182	188
Eton	Murray	275	297	239	Jesup	Wayne	7,304	4,605	2,903
Experiment (U)	Spalding	2,497	4,265	...	Jonesboro	Clayton	3,014	1,741	1,204
Fairburn	Fulton	2,470	1,889	1,502	Junction City	Talbot	226	259	326
Fairmount	Gordon	619	573	474	Kennesaw	Cobb	1,507	564	436
Fair Oaks (U)	Cobb	7,969	3,131	...	Kingsland	Camden	1,536	1,169	619
Farmington	Oconee	151	121	165	Kingston	Bartow	675	653	653
Farrar	Jasper	42	30	16	Kite	Johnson	424	447	472
Fayetteville	Fayette	1,389	1,032	832	La Fayette	Walker	5,588	4,884	3,509
Finleyson	Fulaski	82	79	129	La Grange	Troup	23,632	25,025	21,983
Fitzgerald	Ben Hill	8,781	8,130	7,388	Lake	Clayton	1,042
Flemington	Liberty	149	90	...	Lakeland	Lanier	2,236	1,551	1,502
Flovilla	Butts	284	315	240	Lake Park	Lowndes	338	334	387
Flowers Branch	Hall	741	610	506	Lavonia	Franklin	1,766	1,766	1,667
Folkston	Charlton	1,810	1,515	1,024	Lawrenceville	Gwinnett	3,804	2,932	2,223
Forest Park	Clayton	14,201	2,653	577	Leary	Calhoun	848	721	717
Forsyth	Monroe	3,697	3,125	2,372	Leesburg	Lee	774	659	716
Fort Gaines	Clay	1,320	1,339	1,357	Lenox	Cook	802	789	547
Fort Oglethorpe*	Catoosa	2,251	692	...	Leslie	Sumter	494	417	479
Fort Valley	Walker	8,310	6,820	4,953	Lexington	Oglethorpe	376	514	517
Franklin	Feach	603	425	390	Lilburn	Gwinnett	753
Franklin Springs	Franklin	278	182	116	Lilly	Dooly	136	177	214
Funston	Colquitt	293	233	199	Lincoln Park (U)	Upson	1,840	1,575	...
Gainesville	Hall	16,232	11,936	10,243	Lincolnton	Lincoln	1,450	1,315	894
Gainesville Cotton Mills (U)	Hall	2,207	1,708	...	Lindale-Silver Creek (U)	Floyd	2,800	3,234	...
Garden City	Chatham	5,451	1,557	734	Linwood	Walker	760	858	302
Garfield	Emanuel	225	213	291	Lithonia	De Kalb	1,667	1,538	1,554
Gay	Meriwether	194	241	262	Locust Grove	Henry	369	405	349
Geneva	Talbot	261	209	203	Loganville	Gwinnett	926	699	627
Georgetown	Quitman	554	550	367	Lone Oak	Walton	122	120	137
Gibson	Glascock	479	460	474	Louisville	Meriwether	2,413	2,231	1,803
Gillsville	Banks	140	152	157	Lovejoy	Clayton	191	204	114
Girard	Burke	248	244	300	Lovett	Laurens	61	80	125
Glennville	Tattnall	2,791	2,327	1,674	Ludowici	Long	1,578	1,332	866
Glenwood	Wheeler	682	684	625	Lula	Banks	597	378	316
Godfrey	Morgan	181	168	197	Lumber City	Hall
Good Hope	Walton	165	189	219	Lumpkin	Telfair	1,360	1,232	1,044
Gordon	Wilkinson	1,761	1,761	1,524	Luthersville	Wheeler	1,348	1,209	1,210
Graham	Appling	130	160	165	Iyerly	Stewart	282	312	354
Grantville	Coweta	1,158	1,359	1,267	Lyons	Chattooga	409	524	368
Gratis	Walton	64	70	105	McCaysville	Toombs	3,219	2,799	1,900
Gray	Jones	1,320	866	698	McDonough	Fannin	1,871	2,067	1,832
Grayson	Gwinnett	228	227	228	McIntyre	Henry	2,224	1,635	1,232
Craysville	Catoosa	138	120	126	McIntyre	Wilkinson	316	194	209
Greensboro	Greene	2,773	2,688	2,459	McRae	Telfair	2,738	1,904	1,595
Greenville	Meriwether	726	733	683	Mableton (U)	Cobb	7,127
Griffin	Spalding	21,735	13,982	13,222	Macon	Bibb	69,764	70,252	57,865
Grovetown	Columbia	1,396	Madison	Morgan	2,680	2,489	2,045
Quyton	Bringham	670	633	549	Manassas	Tattnall	154	128	165
Hagan	Evans	522	525	685	Manchester	Meriwether	4,115	4,036	3,462
Hahira	Lowndes	1,297	1,010	980	Mansfield	Newton	394	446	432
Hamilton	Harris	396	449	473	Marietta	Cobb	25,565	20,687	8,667
Hampton	Henry	1,253	864	619	Marietta East (U)	Cobb	4,535
Hapeville	Fulton	10,082	8,560	5,059	Marshallville	Macon	1,308	1,121	905
Haralson	Coweta	141	142	108	Martin	Stephens	209	207	242
Harlem	Meriwether	1,423	1,033	736	Mathews	Jefferson	106	100	145
Harrison	Washington	209	261	298	Maxeys	Oglethorpe	149	204	226
Hartwell	Hart	4,599	2,964	2,372	Mayaville	Banks	553	533	514
Hawkinsville	Fulaski	3,967	3,342	3,000	Meansville	Jackson	335	224	193
Hazlehurst	Jeff Davis	3,699	2,687	1,732	Meigs	Pike	1,236	1,125	927
Hebardville (U)	Ware	2,758	1,113	...	Menlo	Mitchell	466	453	414
Helen	White	227	191	198	Merrillville	Thomas	111	109	121
Helena	Telfair	1,290	1,027	1,073					

Table 8.—POPULATION OF ALL INCORPORATED PLACES AND OF UNINCORPORATED PLACES OF 1,000 OR MORE: 1940 TO 1960—Con.

["U" denotes an unincorporated place. Asterisk (*) denotes an incorporated place under 2,500 located in an urbanized area]

Place	County	1960	1950	1940	Place	County	1960	1950	1940
Metasville.....	Wilkes.....	73	82	169	Plains.....	Sumter.....	572	546	528
Metcoalf.....	Thomas.....	241	206	161	Plainville.....	Gordon.....	161	142	132
Metter.....	Candler.....	2,362	2,091	1,823	Pocotaligo.....	Madison.....	71	68	52
Middleton.....	Elbert.....	106	144	224	Pocler.....	Chatham.....	1,073	818	736
Midville.....	Burke.....	676	682	780	Portal.....	Bulloch.....	494	532	556
Midway.....	Liberty.....	240	228	96	Porterdale.....	Newton.....	2,365	3,207	3,116
Midway-Hardwick (U).....	Baldwin.....	16,909	14,774	...	Port Wentworth.....	Chatham.....	3,705
Milan.....	Dodge.....	786	750	748	Poulan.....	Worth.....	736	750	670
Milledgeville.....	Telfair.....	11,117	8,835	6,778	Powder Springs.....	Cobb.....	746	619	431
Millen.....	Jenkins.....	3,633	3,449	2,820	Preston.....	Webster.....	232	260	349
Miner.....	Lamar.....	305	345	352	Frimrose.....	Meriwether.....	35	24	59
Milstead (U).....	Rockdale.....	1,047	1,075	...	Pulaski.....	Candler.....	155	234	241
Mineral Bluff.....	Fannin.....	149	209	181	Quitman.....	Brooks.....	5,071	4,769	4,450
Minter.....	Laurens.....	147	143	135	Raleigh.....	Meriwether.....	55	48	94
Mitchell.....	Glascock.....	184	240	228	Ranger.....	Gordon.....	161	183	160
Modoc.....	Emanuel.....	33	32	...	Ray City.....	Berrien.....	713	576	638
Molena.....	Pike.....	279	307	310	Rebecca.....	Turner.....	278	295	342
Monroe.....	Walton.....	6,826	4,542	4,168	Reidsville.....	Tattnall.....	1,229	1,266	805
Montezuma.....	Macon.....	2,921	2,346	2,346	Remerton.....	Lowndes.....	571
Monticello.....	Jasper.....	1,931	1,918	1,746	Reno.....	Grady.....	90	108	53
Montrose.....	Laurens.....	236	242	90	Rentz.....	Laurens.....	307	302	319
Moreland.....	Coweta.....	329	306	321	Rest Haven.....	Gwinnett.....	167	147	91
Morgan.....	Calhoun.....	293	304	282	Reynolds.....	Taylor.....	1,087	906	871
Morganton.....	Fannin.....	211	244	285	Rhine.....	Dodge.....	485	514	463
Morrow.....	Clayton.....	580	326	...	Riceboro.....	Liberty.....	259	267	364
Morven.....	Brooks.....	476	474	512	Richland.....	Stewart.....	1,472	1,571	1,497
Moultrie.....	Colquitt.....	15,764	11,639	10,147	Riddleville.....	Washington.....	111	106	115
Mountain City.....	Rabun.....	550	524	524	Rincon.....	Effingham.....	1,057	424	285
Mountain Park.....	Fulton.....	62	15	10	Ringgold.....	Catoosa.....	1,311	1,192	882
Mount Airy.....	Heberham.....	417	416	437	Riverdale.....	Clayton.....	1,045	263	207
Mount Vernon.....	Montgomery.....	1,166	990	900	Riverside.....	Colquitt.....	329	395	307
Mountainville.....	Troup.....	139	142	298	Roberta.....	Crawford.....	714	673	535
Mount Zion.....	Carroll.....	211	141	84	Rochelle.....	Wilcox.....	1,235	1,097	1,175
Mystic.....	Irwin.....	274	281	256	Rockmart.....	Polk.....	3,938	3,821	3,764
Nahunta.....	Brantley.....	952	739	561	Rocky Ford.....	Screven.....	241	278	320
Nashville.....	Berrien.....	4,070	3,414	2,449	Rome.....	Meriwether.....	83	27	64
Naylor.....	Lowndes.....	272	290	261	Roopville.....	Floyd.....	32,226	29,615	26,282
Nelson.....	Cherokee.....	658	645	679	Rossville.....	Carroll.....	203	202	230
Newborn.....	Pickens.....	283	298	307	Roswell.....	Walker.....	4,665	3,892	3,538
Newington.....	Jasper.....	399	429	366	Royston.....	Fulton.....	2,983	2,123	1,622
Newman.....	Newton.....	12,169	8,218	7,186	Ruckersville.....	Franklin.....
Newton.....	Coweta.....	529	503	514	Russell.....	Hart.....	2,333	2,039	1,549
Nicholls.....	Baker.....	930	806	660	Rutledge.....	Madison.....	64	74	65
Nicholson.....	Coffee.....	359	252	212	St. Marks.....	Elbert.....	163	129	126
Norcross*.....	Gwinnett.....	1,605	1,340	979	St. Marys.....	Barrow.....	478	482	550
Norman Park.....	Colquitt.....	891	832	587	Sale City.....	Meriwether.....	28	43	48
Normontown.....	Toombs.....	49	78	122	Sandersville.....	Camden.....	3,272	1,348	733
North Atlanta.....	De Kalb.....	12,661	5,930	1,365	Santa Claus.....	Glynn.....	3,199
North Canton (U).....	Cherokee.....	1,996	1,913	...	Sardis.....	Mitchell.....	275	289	329
North High Shoals.....	Oconee.....	122	124	...	Sassers.....	Washington.....	5,425	4,480	3,566
Norwood.....	Warren.....	294	268	269	Savannah.....	Toombs.....	5
Nunee.....	Emanuel.....	18	82	155	Savannah Beach.....	Burke.....	829	695	667
Oakfield.....	Worth.....	141	108	127	Scotland.....	Terrell.....	382	371	365
Oakman.....	Gordon.....	156	127	...	Scott.....	Chatham.....	149,245	119,638	95,996
Oak Park.....	Emanuel.....	302	308	208	Senola.....	Chatham.....	1,385	1,036	644
Oakwood.....	Hall.....	218	225	207	Seville.....	Telfair.....	236	218	238
Ochlocknee.....	Thomas.....	502	503	429	Shady Dale.....	Wheeler.....
Ocilla.....	Irwin.....	3,217	2,697	2,124	Shannon (U).....	Johnson.....	149	194	256
Odeasdale.....	Meriwether.....	142	55	79	Sharon.....	Wayne.....	1,010	752	664
Odum.....	Wayne.....	404	389	469	Sharpsburg.....	Coweta.....	782	770	679
Oglethorpe.....	Macon.....	1,169	1,204	1,048	Shellman.....	Wilcox.....	179	187	245
Ochopee.....	Toombs.....	51	53	135	Siloam.....	Jasper.....	201	253	159
Oliver.....	Screven.....	192	223	211	Smithonia.....	Floyd.....	1,629	1,676	...
Omaha.....	Stewart.....	174	217	211	Smithville.....	Talaferrro.....	264	224	282
Omega.....	Tift.....	940	966	608	Smyrna.....	Coweta.....	155	133	114
Orchard Hill.....	Spalding.....	105	82	89	Social Circle.....	Randolph.....	1,050	1,090	1,063
Osterfield.....	Irwin.....	82	147	118	Soperton.....	Greene.....	321	324	318
Oxford.....	Newton.....	1,047	817	616	Sparta.....	Lee.....	732	676	619
Palmetto.....	Coweta.....	1,466	1,257	1,029	Spartanburg.....	Sumter.....	10,157	2,005	1,440
Parrott.....	Fulton.....	280	291	337	Springfield.....	Cobb.....	468	309	204
Patterson.....	Terrell.....	719	656	541	Spring Place.....	Gwinnett.....	1,780	1,685	1,735
Pavo.....	Pierce.....	817	806	706	Springvale.....	Walton.....	1,780	1,685	1,735
Payne*.....	Brooks.....	346	520	535	Stepleton.....	Treutlen.....	2,317	1,667	1,339
Pearson.....	Thomas.....	1,615	1,402	1,057	Statesboro.....	Cook.....	1,158	887	695
Pelham.....	Elbert.....	4,609	4,365	2,579	Statham.....	Hancock.....	1,921	1,954	1,872
Pembroke.....	Atkinson.....	1,450	1,171	1,039	Stillmore.....	Effingham.....	858	627	458
Pendergrass.....	Mitchell.....	215	189	189	Stockbridge.....	Murray.....	194	214	219
Penfield.....	Bryan.....	105	74	218	Stone Mountain.....	Randolph.....	57	127	148
Pepperton.....	Jackson.....	523	572	585	Sugar Hill.....	Jefferson.....	356	355	342
Perry.....	Greene.....	6,032	3,849	1,542	Sugar Valley.....	Bulloch.....	8,356	6,097	5,028
Phillipsburg (U).....	Butts.....	457	430	474	Summerville.....	Barrow.....	711	626	605
Pinehurst.....	Houston.....	738	566	2	Summer.....	Emanuel.....	354	420	493
Pine Lake.....	Tift.....	790	817	709	Sunnyside.....	Henry.....	1,201	717	443
Pine Mountain.....	De Kalb.....	210	Surrency.....	De Kalb.....	1,976	1,899	1,408
Pineora.....	Harris.....	82	126	181	Swanee.....	Gwinnett.....	1,175	783	599
Pine Park.....	Effingham.....	369	310	350	Swainsboro.....	Gordon.....	165	214	239
Pineview.....	Grady.....	388	371	371	Swansea.....	Chattooga.....	4,706	3,973	1,358
Pitts.....	Wilcox.....	84	117	182	...	Worth.....	193	226	340
Plainfield.....	Dodge.....	Spalding.....	190	169	123

1 Name changed from Chipley since 1950.

Table 8.—POPULATION OF ALL INCORPORATED PLACES AND OF UNINCORPORATED PLACES OF 1,000 OR MORE: 1940 TO 1960—Con.

["U" denotes an unincorporated place. Asterisk (*) denotes an incorporated place under 2,500 located in an urbanized area]

Place	County	1960	1950	1940	Place	County	1960	1950	1940
Sycamore	Turner	501	624	601	Vienna	Dooly	2,099	2,202	2,063
Sylvania	Screven	3,469	2,939	2,531	Villa Rica	Carroll	3,450	1,703	1,522
Sylvester	Worth	3,610	2,623	2,191	Waco	Douglas			
Talbotton	Talbot	1,163	1,175	1,060	Wadley	Haralson	381	328	304
Talking Rock	Pickens	84	94	103	Waleska	Jefferson	1,898	1,624	1,133
Tallapoosa	Haralson	2,744	2,826	2,338	Walton	Cherokee	479	385	264
Tallulah Falls	Habersham	225	239	73	Walnut Grove	Walton	119	121	117
Talmo	Rabun				162	152	131	Warm Springs	Meriwether
Tarrytown	Jackson	191	250	298	Warner Robins	Houston	18,633	7,986	
Taylorville	Montgomery	226	260	233	Warrenton	Warren	1,770	1,442	1,284
Tazewell	Polk				112	Warwick	Worth
Temple	Marion	788	676	624	Washington	Wilkes	4,440	3,802	3,537
Tennille	Carroll	1,837	1,713	1,758	Watkinsville	Oconee	758	662	558
The Rock	Washington	115	147	179	Waverly Hall	Harris	712	690	569
Thomaston	Upson	9,336	6,580	6,396	Waycross	Ware	20,944	18,899	16,763
Thomasville	Upson	18,246	14,424	12,683	Waynesboro	Burke	5,359	4,461	3,793
Thomson	Thomas	4,522	3,489	3,088	Wesley	Emanuel	79	66	...
Thunderbolt*	McDuffie	1,925	1,238	886	Weston	Webster	120	162	173
Tifton	Chatham	9,903	6,831	5,228	West Point	Harris	4,610	4,076	3,591
Tiger	Tift	277	269	289	Whigham	Troup			
Tignall	Rabun	556	502	567	White	Grady	463	471	533
Toccoa	Wilkes	7,303	6,781	5,494	Whitehall	Bartow	439	454	474
Tocombsboro	Stephens	764	711	593	White Plains	Clarke	409	493	599
Towns	Wilkinson	91	96	216	Whitesburg	Greene	273	359	364
Trenton	Telfair	1,301	755	570	Willacoochee	Carroll	366	400	341
Trion	Dade	2,227	3,028	3,800	Williamson	Meriwether	156	32	3
Turin	Chattooga	183	185	146	Winder	Atkinson	1,061	987	903
Twin City	Coveta	1,095	1,018	1,019	Winterville	Pike	215	211	217
Tyrone	Emanuel	124	156	118	Woodbine	Barrow	5,555	4,604	3,974
Ty Ty	Fayette	461	478	442	Woodbury	Clarke	497	453	503
Unadilla	Tift	1,304	1,098	1,137	Woodland	Camden	845	750	373
Union City	Dooly	2,118	1,490	884	Woodstock	Meriwether	1,230	985	865
Union Point	Fulton	1,615	1,724	1,566	Woodville	Talbot	720	621	489
Unionville (U)	Greene	1,607	Wrens	Cherokee	726	545	389
Uvalda	Tift	589	511	592	Wrightsville	Greene	372	484	458
Valdosta	Montgomery	30,652	20,046	15,595	Yatesville	Fayette	114	90	115
Vanna	Lowndes	152	145	167	Young Harris	Jefferson	1,628	1,380	1,192
Vernonburg	Hart	65	Zebulon	Johnson	2,056	1,750	1,760
Vidalia	Chatham	7,569	5,819	4,109		Upson	354	290	240
Vidette	Toombs	103	159	160		Towns	743	450	258
	Burke		Pike	563	539	543

Table 9.—1960 POPULATION OF AREAS ANNEXED BETWEEN 1950 AND 1960 BY INCORPORATED PLACES HAVING 2,500 INHABITANTS OR MORE IN 1950

[Minus sign (-) denotes decrease]

Incorporated place	1960 population			1950 population total	Increase, 1950 to 1960, in 1950 area	Incorporated place	1960 population			1950 population total	Increase, 1950 to 1960, in 1950 area
	Total	In 1950 area	In annexed area				Total	In 1950 area	In annexed area		
Adel	4,321	3,788	533	2,776	1,012	Hapeville	10,082	9,843	239	8,560	1,283
Albany	55,890	38,321	17,569	31,155	7,166	Hazlehurst	3,699	3,654	35	2,687	977
Alma	3,515	3,056	459	2,588	468	Jesup	7,304	6,970	334	4,605	2,365
Americus	13,472	12,371	1,101	11,389	982	Lawrenceville	3,804	2,451	353	2,932	519
Athens	31,355	31,330	25	28,180	3,150	Macon	69,764	65,129	4,635	70,252	-5,123
Atlanta	487,455	315,988	171,467	331,314	-15,326	Manchester	4,115	3,931	184	4,036	-105
Augusta	70,626	62,655	7,971	71,508	-8,853	Marietta	25,565	21,840	3,725	20,687	1,153
Bainbridge	12,714	8,769	3,945	7,562	1,207	Milledgeville	11,117	10,287	830	8,835	1,452
Brunswick	21,703	21,558	145	17,954	3,604	Monroe	6,826	5,637	1,189	4,542	1,095
Cairo	7,427	6,363	1,064	5,577	786	Montezuma	3,744	3,513	231	2,921	592
Calhoun	3,587	3,388	199	3,231	157	Moultrie	15,764	11,849	3,915	11,639	210
Carrollton	10,973	8,405	2,568	7,753	652	Newman	12,169	9,588	2,581	8,218	1,370
Cartersville	8,668	7,553	1,115	7,270	283	Rockmart	3,938	3,736	202	3,821	-85
Cedartown	9,340	9,042	298	9,470	-428	Rome	32,226	29,733	2,493	29,615	118
Chamblee	6,635	5,132	1,503	3,445	1,687	Rossville	4,665	4,263	402	3,892	371
College Park	23,469	18,964	4,505	14,535	4,429	Sandersville	5,425	5,425	...	4,480	945
Columbus	116,779	73,320	43,459	79,611	-6,291	Savannah	149,245	124,082	25,163	119,638	4,444
Commerce	3,551	3,315	236	3,351	-36	Statesboro	8,356	7,224	1,132	6,097	1,127
Cordele	10,609	10,215	394	9,462	753	Sylvester	3,610	3,223	387	2,623	610
Covington	8,167	6,437	1,730	5,192	1,245	Thomaston	9,336	9,157	179	6,580	2,577
Dalton	17,868	17,712	156	15,968	1,744	Thomasville	18,246	14,826	3,420	14,424	402
Douglas	8,736	8,591	145	7,428	1,163	Thomson	4,522	4,050	472	3,489	561
Dublin	13,814	13,000	814	10,232	2,768	Tifton	9,903	7,143	2,760	6,312	312
Eastman	5,118	4,624	494	3,597	1,027	Toccoa	7,303	6,848	455	6,781	67
East Point	35,633	32,186	3,447	21,080	11,106	Valdosta	30,652	23,303	7,349	20,046	3,257
Fitzgerald	8,781	8,730	51	8,130	600	Warner Robins	18,633	10,895	7,738	7,986	2,909
Forest Park	14,201	4,799	9,402	2,653	2,146	Waycross	20,944	20,494	450	18,899	1,595
Gainesville	16,523	12,387	4,136	11,936	451	Waynesboro	5,359	5,247	112	4,461	786
Griffin	21,735	15,260	6,475	13,982	1,278	West Point	4,610	3,352	1,258	4,076	-724

Table 10.—POPULATION OF URBANIZED AREAS: 1960 AND 1950

Area	1960	1950	Area	1960	1950
ALBANY (GA.) URBANIZED AREA			CHATTANOOGA (TENN.-GA.) URBANIZED AREA		
The area.....	58,353	(¹)	That part of the area in Georgia ⁵	20,299	9,902
Albany city.....	55,890	...	The area includes the following census county divisions and parts of census county divisions:		
Outside central city.....	2,463	...	Catoosa County (part).....	6,931	² 2,248
The area includes the following census county divisions and parts of census county divisions:			Fort Oglethorpe-Westside division (part).....	2,687	...
Dougherty County (part).....	58,353	...	Fort Oglethorpe town (part).....	2,192	(³)
Albany division.....	55,890	...	Lakeview division (part).....	4,244	...
Albany city.....	55,890	...	Walker County (part).....	13,368	² 7,654
Central Dougherty division (part).....	2,463	...	Beverly Hills division (part).....	6,871	...
			Fort Oglethorpe town (part).....	59	(³)
ATLANTA (GA.) URBANIZED AREA			Chattanooga Valley division (part).....	1,272	...
The area.....	768,125	507,887	Fairlyland division (part).....	560	...
Atlanta city.....	487,455	331,314	Rossville division.....	4,665	...
Outside central city.....	280,670	176,573	Rossville city.....	4,665	3,892
The area includes the following census county divisions and parts of census county divisions:			COLUMBUS (GA.-ALA.) URBANIZED AREA		
Clayton County (part).....	27,268	² 3,734	The area.....	158,382	118,485
College Park division (part).....	9,705	...	Columbus city.....	116,779	79,611
College Park city (part).....	8,306	3,307	Outside central city.....	41,603	38,874
Forest Park division (part).....	17,563	...	The area includes the following census county divisions and parts of census county divisions:		
Forest Park town.....	14,201	(³)	In Georgia.....	130,752	95,180
De Kalb County (part).....	217,165	² 97,077	Muscookee County (part).....	130,752	² 95,180
Atlanta division.....	41,332	...	Columbus division.....	117,992	...
Atlanta city (part).....	41,332	37,535	Bibb City town.....	1,213	1,452
Avondale Estates-Belvedere division (part).....	22,925	...	Columbus city.....	116,779	79,611
Avondale Estates city.....	1,646	...	Edgewood division (part).....	533	...
Candler-Glenwood division (part).....	23,423	...	Gentian division (part).....	8,140	...
Chamblee-Doraville division (part).....	28,711	...	St. Marys division (part).....	4,087	...
Chamblee city.....	6,635	3,445	In Alabama.....	27,630	23,305
Doraville city.....	4,437	472	Russell County (part).....	27,630	⁶ 23,305
Clarkston division (part).....	2,955	...	Phenix City division.....	27,630	...
Clarkston town.....	1,524	1,165	Phenix City.....	27,630	23,305
Constitution-Panthersville division (part).....	9,799	...	MACON (GA.) URBANIZED AREA		
Decatur division.....	22,026	...	The area.....	114,161	93,499
Decatur city.....	22,026	21,635	Macon city.....	69,764	70,252
Druid Hills-North Decatur division.....	22,559	...	Outside central city.....	44,397	23,247
North Atlanta division.....	12,661	...	The area includes the following census county divisions and parts of census county divisions:		
North Atlanta village.....	12,661	5,930	Bibb County (part).....	114,161	² 93,499
North Druid Hills division.....	17,157	...	Bloomfield division (part).....	597	...
Scottdale division.....	9,175	...	Howard division (part).....	735	...
Tucker division (part).....	4,442	...	Macon division.....	69,764	...
Fulton County (part).....	518,801	² 407,076	Macon city.....	69,764	70,252
Atlanta division.....	446,123	...	South Macon division (part).....	23,295	...
Atlanta city (part).....	446,123	293,779	Walnut Creek division (part).....	8,259	...
College Park division (part).....	15,818	...	West Macon division (part).....	11,511	...
College Park city (part).....	15,163	11,228	Payne city.....	346	520
East Point division.....	35,633	...	SAVANNAH (GA.) URBANIZED AREA		
East Point city.....	35,633	21,080	The area.....	169,887	128,196
Hapeville division.....	10,082	...	Savannah city.....	149,245	119,638
Hapeville city.....	10,082	8,560	Outside central city.....	20,642	8,558
Sandy Springs division (part).....	11,145	...	The area includes the following census county divisions and parts of census county divisions:		
Gwinnet County (part).....	4,891	(³)	Chatham County (part).....	169,887	² 128,196
Norcross division (part).....	4,891	...	Garden City division (part).....	6,850	...
Norcross city.....	1,605	...	Garden City town.....	5,451	1,557
AUGUSTA (GA.-S.C.) URBANIZED AREA			Montgomery division (part).....	1,903	...
The area.....	123,698	87,733	Port Wentworth division (part).....	4,267	...
Augusta city.....	70,626	71,508	Port Wentworth city.....	3,705	(⁷)
Outside central city.....	53,072	16,225	Savannah division.....	149,245	...
The area includes the following census county divisions and parts of census county divisions:			Savannah city.....	149,245	119,638
In Georgia.....	110,870	84,074	Thunderbolt division (part).....	4,102	...
Richmond County (part).....	110,870	² 84,074	Thunderbolt town.....	1,925	1,238
Augusta division.....	70,626	...	West Savannah division (part).....	3,520	...
Augusta city.....	70,626	71,508			
Forest Hills division (part).....	2,573	...			
Lakemont division (part).....	3,852	...			
Neco division (part).....	17,574	...			
South Hellsville division (part).....	3,690	...			
Turpin Place division.....	7,189	...			
Tuxedo Park division.....	5,366	...			
In South Carolina.....	12,828	3,659			
Aiken County (part).....	12,828	⁴ 3,659			
North Augusta division (part).....	12,828	...			
North Augusta city.....	10,348	3,659			

¹ There was no urbanized area delineated for Albany for the 1950 Census.

² County returned in 1950 by militia districts; data by census county divisions not available.

³ Not in area in 1950.

⁴ County returned in 1950 by townships; data by census county divisions not available.

⁵ For the map and population of the entire Chattanooga (Tenn.-Ga.) Urbanized Area, see the corresponding report for Tennessee.

⁶ County returned in 1950 by election districts; data by census county divisions not available.

⁷ Incorporated since 1950.

Table 11.—POPULATION OF STANDARD METROPOLITAN STATISTICAL AREAS: 1960 AND 1950

[Data relate to areas as defined for 1960. Minus sign (-) denotes decrease]

Standard metropolitan statistical area, central city, and other component areas	1960	1950	Increase		Standard metropolitan statistical area, central city, and other component areas	1960	1950	Increase	
			Number	Percent				Number	Percent
ALBANY, GA. (Dougherty County)					COLUMBUS, GA.—ALA.				
Total.....	75,680	43,617	32,063	73.5	Total.....	217,985	170,541	47,444	27.8
Albany city.....	55,890	31,155	24,735	79.4	Columbus city.....	116,779	79,611	37,168	46.7
Outside central city.....	19,790	12,462	7,328	58.8	Outside central city.....	101,206	90,930	10,276	11.3
ATLANTA, GA.					MACON, GA.				
Total.....	1,017,188	726,989	290,199	39.9	Total.....	180,403	135,043	45,360	33.6
Atlanta city.....	487,455	331,314	156,141	47.1	Macon city.....	69,764	70,252	-488	-0.7
Outside central city.....	529,733	395,675	134,058	33.9	Outside central city.....	110,639	64,791	45,848	70.8
Clayton County.....	46,365	22,872	23,493	102.7	Bibb County.....	141,249	114,079	27,170	23.8
Cobb County.....	114,174	61,830	52,344	84.7	Houston County.....	39,154	20,964	18,190	86.8
De Kalb County.....	256,782	136,395	120,387	88.3	SAVANNAH, GA. (Chatham County)				
Fulton County.....	556,326	473,572	82,754	17.5	Total.....	188,299	151,481	36,818	24.3
Gwinnett County.....	43,541	32,320	11,221	34.7	Savannah city.....	149,245	119,638	29,607	24.7
AUGUSTA, GA.—S.C.					Outside central city.....				
Total.....	216,639	162,013	54,626	33.7		39,054	31,843	7,211	22.6
Augusta city.....	70,626	71,508	-882	-1.2	CHATTANOOGA, TENN.—GA.				
Outside central city.....	146,013	90,505	55,508	61.3	That part of the area in Georgia.....				
Richmond County, Ga.....	135,601	108,876	26,725	24.5		45,264	38,198	7,066	18.5
Aiken County, S.C.....	81,038	53,137	27,901	52.5	Walker County, Ga.....				
						45,264	38,198	7,066	18.5

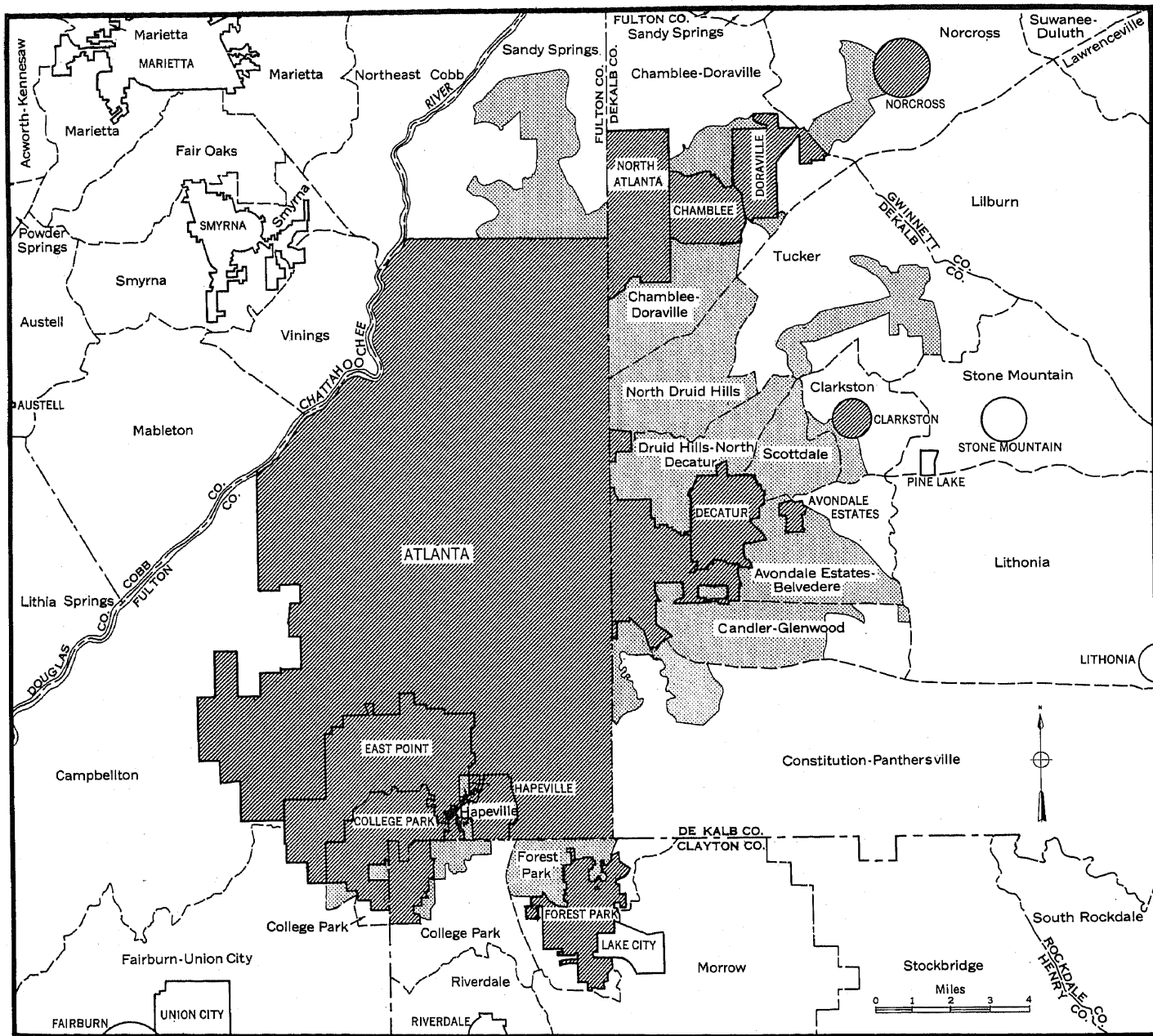
Table 12.—POPULATION OF THE STATE AND OF STANDARD METROPOLITAN STATISTICAL AREAS, BY TYPE OF RESIDENCE: 1960

Metropolitan-nonmetropolitan residence	Total	Urban			Rural		
		Total	Central city or cities	Other urban territory	Total	Places of 1,000 to 2,500	Other rural territory
The State.....	3,943,116	2,180,236	949,759	1,230,477	1,762,880	179,921	1,582,959
In standard metropolitan statistical areas.....	1,814,069	1,469,472	949,759	519,713	344,597	27,369	317,228
Albany, Ga.....	75,680	58,353	55,890	2,463	17,327	...	17,327
Atlanta, Ga.....	1,017,188	837,447	487,455	349,992	179,741	23,087	156,654
Augusta, Ga.—S.C.....	135,601	110,870	70,626	40,244	24,731	...	24,731
Chattanooga, Tenn.—Ga.....	245,264	18,956	...	18,956	26,308	1,824	24,484
Columbus, Ga.—Ala.....	171,634	130,752	116,779	13,973	40,882	...	40,882
Macon, Ga.....	180,403	143,207	69,764	73,443	37,196	...	37,196
Savannah, Ga.....	188,299	169,887	149,245	20,642	18,412	2,458	15,954
Not in standard metropolitan statistical areas.....	2,129,047	710,764	...	710,764	1,418,283	152,552	1,265,731



¹ Part in State only; for entire area see table 11.

² Part in State only; for entire area see table 11 of the corresponding report for Tennessee, or table 31 of the U.S. Summary.


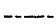
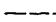
ATLANTA URBANIZED AREA



COMPONENTS OF URBANIZED AREA

-  Incorporated Places
-  Unincorporated Area

BOUNDARY SYMBOLS

-  State Line
-  County Line
-  Census County Division Line

Maps showing boundaries in detail are available at cost on request to the Bureau of the Census.

URBANIZED AREAS—GEORGIA

