



1970 CENSUS OF POPULATION

U. S. DEPARTMENT OF COMMERCE • Social and Economic Statistics Administration • BUREAU OF THE CENSUS

PC(S1)-81

Issued May 1974

SUPPLEMENTARY REPORT

Low-Income Neighborhoods in Large Cities: 1970

Kansas City, Mo.

This report is one of 39 within the PC(S1) series of 1970 census reports that summarize information on the population and housing characteristics of low-income neighborhoods in the Nation's 50 largest cities.¹ Low-income neighborhoods are subdivisions of low-income areas, which for this report include all census tracts in which 20 percent or more of all persons were below the poverty level in 1969. (See "Definitions.") These low-income neighborhoods generally consist of contiguous census tracts with a combined population of 20,000 or more. The neighborhood boundaries are based on current socioeconomic data and the recommendations of local agencies.

Information is presented here on each of the low-income neighborhoods within the city. The statistics shown in the detailed tables are part of a special tabulation of 1970 census data prepared for the Office of Economic Opportunity to determine the location of low-income areas and their neighborhood subdivisions, to analyze the characteristics of the residents of these neighborhoods, and to compare the residential characteristics of a low-income neighborhood to those of other low-income neighborhoods and those of areas outside such neighborhoods. For further information on this special tabulation, see "Related Materials." Financial support for the preparation of this set of 39 reports was provided by the Office of Assistant Secretary for Planning and Evaluation, Department of Health, Education, and Welfare. Similar data for the entire city, the entire low-income area (without neighborhood subdivisions), and the balance of the city outside the low-income area are published in **1970 Census of Population, Volume II, Subject Reports, Series PC(2)-9B, "Low-Income Areas in Large Cities."**

¹ Except Honolulu, for which no low-income neighborhoods were defined. See list of 39 reports on page ii.

This report was prepared by Donald G. Fowles, Poverty Statistics Program, Population Division.

For sale by the Superintendent of Documents, U.S. Government Printing Office, Washington, D.C. 20402, and U.S. Department of Commerce District Offices. Price 65 cents

PC(S1) REPORTS ON LOW-INCOME NEIGHBORHOODS IN LARGE CITIES

<u>Report number</u>	<u>Cities</u>	<u>Report number</u>	<u>Cities</u>
65	Atlanta, Ga.	85	Miami, Fla.
66	Baltimore, Md.	86	Milwaukee, Wis.
67	Birmingham, Ala.	87	Minneapolis and St. Paul, Minn.
68	Boston, Mass.	88	Newark, N.J.
69	Buffalo and Rochester, N.Y.	89	New Orleans, La.
70	Chicago, Ill.	90	New York, N.Y.
71	Cincinnati, Ohio	91	Norfolk, Va.
72	Cleveland and Toledo, Ohio	92	Oklahoma City and Tulsa, Okla.
73	Columbus, Ohio	93	Omaha, Nebr.
74	Dallas and Fort Worth, Tex.	94	Philadelphia, Pa.
75	Denver, Colo.	95	Phoenix, Ariz.
76	Detroit, Mich.	96	Pittsburgh, Pa.
77	El Paso, Tex.	97	Portland, Oreg.
78	Houston, Tex.	98	St. Louis, Mo.
79	Indianapolis, Ind.	99	San Antonio, Tex.
80	Jacksonville and Tampa, Fla.	100	San Diego and San Jose, Calif.
81	Kansas City, Mo.	101	San Francisco and Oakland, Calif.
82	Los Angeles and Long Beach, Calif.	102	Seattle, Wash.
83	Louisville, Ky.	103	Washington, D.C.
84	Memphis and Nashville-Davidson, Tenn.		

About 107,000 persons resided in the low-income area of Kansas City, Mo., in 1970 (table A). These low-income area residents constituted 21 percent of the city's population. In the balance of the metropolitan area outside Kansas City, only 6 percent of the population resided in such areas.

The low-income area of Kansas City was subdivided into four neighborhoods which varied in size and racial composition. The population of the neighborhoods ranged from 22,000 to 31,000, and the proportion of the population which was Negro ranged from 10 percent to 96 percent. In the low-income area as a whole, Negroes constituted 61 percent of the population, as compared with 12 percent in the balance of the city.

There were 65,000 persons in Kansas City who were below the poverty level in 1969. Of these, 49 percent lived in the low-income area. About 30 percent of the residents of the low-income area were below the poverty level, as compared with only 9 percent of those living elsewhere in the city. Within

the low-income area, this proportion ranged from 27 percent in neighborhood 1 to 34 percent in neighborhood 2.

Although a high proportion of the poor resided in the low-income area, blacks who were above the poverty level were more likely to live in this area than whites who were below this level. About 74 percent of the city's poor blacks and 54 percent of the nonpoor blacks resided in the low-income area, as contrasted with 29 percent of the city's poor white population and 9 percent of nonpoor whites.

The population of the low-income area, as well as the balance of the city, contained the whole range of social, economic, and housing characteristics. However, there were generally sharp contrasts between the proportional distribution of the characteristics of the low-income area population and the population living outside this area. In addition, there was some variation in the characteristics of the individual neighborhoods within the low-income area.

Table A. Poverty Status in 1969 of Persons By Residence in Low-Income Neighborhoods and Race, for the Kansas City, Mo.-Kans. SMSA: 1970

(See accompanying maps and tract listings for location of low-income neighborhoods)

Area	All income levels			Below poverty level		Percent below poverty level	
	Total	Negro		Total	Negro	Total	Negro
		Number	Percent of total				
SMSA, total.....	1,240,970	149,282	12.0	120,414	40,195	9.7	26.9
In low-income area.....	150,480	92,957	61.8	43,948	29,994	29.2	32.3
Percent in low-income area.....	12.1	62.3	(X)	36.5	74.6	(X)	(X)
Kansas City, Mo.....	500,284	110,774	22.1	65,107	28,863	13.0	26.1
In low-income area ¹	107,074	65,697	61.4	31,869	21,223	29.8	32.3
Percent in low-income area.....	21.4	59.3	(X)	48.9	73.5	(X)	(X)
Neighborhood 1.....	22,363	2,116	9.5	6,126	922	27.4	43.6
Neighborhood 2.....	22,689	9,177	40.4	7,690	4,026	33.9	43.9
Neighborhood 3.....	27,589	26,441	95.8	7,894	7,500	28.6	28.4
Neighborhood 4.....	31,062	25,423	81.8	9,174	7,969	29.5	31.3
Not in low-income area.....	393,210	45,077	11.5	33,238	7,640	8.5	16.9
Balance of SMSA.....	740,686	38,508	5.2	55,307	11,332	7.5	29.4
In low-income area.....	43,406	27,260	62.8	12,079	8,771	27.8	32.2
Percent in low-income area.....	5.9	70.8	(X)	21.8	77.4	(X)	(X)

(X) Not applicable.

¹Includes census tracts 60 and 135 in Jackson County, Mo., and tract 306 in Platte County, Mo., not included in the neighborhoods. Neighborhoods 1 to 4 are located entirely within Jackson County.

Families within the low-income area were more likely to be headed by females than families outside this area. Such families constituted 26 percent of all low-income area families, as compared with only 11 percent of families living elsewhere in the city (table 8). Low-income area families headed by women were also more likely to have children in the home and, moreover, tended to have a larger number of children than families living outside the low-income area. Thus, a considerably higher proportion of children living in the low-income area (44 percent) were in families in which both parents were not present than were children living outside this area (15 percent). This proportion was as high as 48 percent in neighborhood 2.

The generally lower socioeconomic status of the low-income area population was reflected by such characteristics as education, employment, and occupation. For example, about 65 percent of persons 25 years old and over who resided in the low-income area had not completed their high school education, as compared with 38 percent outside this area.

Low-income area families were less likely to contain earners than those living outside this area, even when families headed by an aged person were excluded. Furthermore, working heads of families

were less likely to have worked year round if they lived in the low-income area. Unemployment rates were generally higher in this area than elsewhere, and those persons who were employed were more concentrated in the lower-paying occupations. Only 24 percent of employed males who lived in the low-income area were employed in white-collar occupations, as compared with 46 percent for males living outside this area. This proportion was as low as 18 percent in neighborhood 4. The same relationship was observed for females, although they were more likely to be employed in white-collar occupations (primarily as clerical and sales workers) than males.

The low-income neighborhoods of Kansas City were clustered around the central business district and therefore contained a disproportionate share of older housing units, often vacant. The majority of the housing units in the low-income area were occupied by renters, and a higher proportion contained more than one person per room than units outside this area. Low-income area housing tended to be less expensive in terms of average rent but similar in terms of the proportion of a family's income required to cover this expense. About 45 percent of the low-income area households paid more than one-fourth of their income for rent, as compared with 41 percent for households outside this area.

Table B. Summary of Social, Economic, and Housing Characteristics of the Population By Residence in Low-Income Neighborhoods, for Kansas City, Mo.: 1970
(See accompanying maps and tract listings for location of low-income neighborhoods)

Area	Families					Persons					Housing units				
	Percent of all families	With female head		Head worked in 1969- percent worked 50 to 52 weeks	Percent with no "berms"	Employed, 16 years old and over- percent in white collar occupations		Males in civilian labor force, 18 to 64 years old- percent unemployed	25 years old and over- percent not high school graduate	Related children under 18 years old- percent not living with both parents	Percent vacant	Renter- occupied	Structure built 1939 or earlier	Occupied- percent	
		With related children under 18 years old	Mean number of children			Male	Female							With 1.01 or more persons per room	Gross rent one-fourth or more of income?
Kansas City, total.....	13.5	61.3	2.57	73.9	2.6	41.8	66.5	3.6	43.9	21.1	8.3	41.9	50.3	6.1	42.7
In low-income area.....	26.4	71.6	2.89	61.1	6.3	24.3	44.1	6.2	65.2	44.1	16.6	65.3	75.1	9.1	45.0
Neighborhood 1.....	21.2	64.0	2.55	60.2	5.9	33.4	57.8	7.1	62.9	38.7	17.2	84.4	70.2	7.9	43.2
Neighborhood 2.....	28.1	74.2	3.03	58.1	8.3	23.3	45.8	7.1	70.1	48.2	17.4	73.6	66.5	8.8	43.6
Neighborhood 3.....	28.1	67.6	2.73	65.8	4.8	22.4	36.7	5.5	65.1	46.2	15.1	53.3	83.9	9.2	46.3
Neighborhood 4.....	28.5	76.8	3.14	61.1	6.8	18.3	40.1	5.7	63.3	44.6	17.6	54.7	83.1	10.3	48.7
Not in low-income area.....	10.6	55.4	2.33	76.5	1.8	45.7	72.2	3.1	38.2	14.7	5.5	34.9	42.9	5.2	41.4

¹Excludes families with head 65 years old and over.
²Excludes one-family homes on 10 acres or more, all "no cash rent" units, and units for which the income of the family or primary individual was reported as "none" or "loss."

RELATED MATERIALS

1970 Census

There are three primary sources of 1970 census data on the characteristics of the population residing in low-income areas as defined in this report. The first source is the volume II report, PC(2)-9B, "Low-Income Areas in Large Cities," which presents data for low-income areas (without neighborhood subdivisions) in the Nation's 50 largest cities. The second source, consisting of this report and the other PC(S1) reports listed on page 2, presents data for neighborhood subdivisions of low-income areas in the same 50 cities. The third source, from which the data for these PC(S1) reports were extracted, consists of a special tabulation of 1970 census data prepared for the Office of Economic Opportunity (OEO). This tabulation covers each of the 97 standard metropolitan statistical areas (SMSA's) in which one or more of the central cities had at least one group of contiguous low-income area tracts with a population of 20,000 or more. For each of these 97 SMSA's, the OEO tabulation shows data for the entire SMSA, each component county, and each central city, including the neighborhood subdivisions of the central city low-income area.

In each of the three sources, comparable data are shown for all races, white, Negro, and persons of Spanish language. For SMSA's in California, data also are shown for the Japanese, Chinese, American Indian, and Filipino populations.

Copies of the entire OEO tabulation for each of the 97 SMSA's, including maps and census tract listings which identify the low-income areas and their neighborhood subdivisions, were sent to the appropriate Federal Regional Councils, State Economic Opportunity Offices, and local community action agencies. Copies of these materials can also be obtained by writing to the Chief, Industrial and Social Records Branch, National Archives, Washington, D.C. 20408. Requests for further information about this tabulation, as well as limited requests for copies, should be made in writing to the Chief, Population Division, Bureau of the Census, Washington, D.C. 20233.

Selected summary data for the 50 cities individually and seven tables of detailed data for the 50 cities combined were extracted from the PC(2)-9B report and published separately in **1970 Census of Population, Supplementary Report, Series PC(S1)-56, "Selected Characteristics of the Population in Low-Income Areas of Large Cities."**

Maps of these 50 cities showing the location of census tracts in low-income areas by poverty rate (but without neighborhood subdivisions) are available at cost of reproduction. Requests for these maps, specifying the cities desired, should be made in writing to the Chief, Population Division, Bureau of the Census, Washington, D.C. 20233.

Data for low-income areas as defined for the Census Employment Survey (CES) are available for 60 urban and 7 rural areas in **1970 Census of Population and Housing, Employment Profiles of Selected Low-Income Areas, Series PHC(3)**. The definition of low-income areas used for the CES differs from the definition used for this report. (See "Definitions.") Most of the data in the PHC(3) reports consist of detailed information not available from the 1970 census questionnaire on such subjects as employment, unemployment, training for work, job-seeking methods, job tenure, sources and level of income, residential mobility, transportation to work, and selected factors considered deterrents to employment.

Poverty statistics based on the 20-percent sample for the United States, regions, divisions, States, SMSA's, places with a population of 2,500 or more, and counties were published in chapter C of **1970 Census of Population, Volume I, Characteristics of the Population**. More detailed poverty data cross-classified by such variables as education, employment status, occupation, and income were published in chapter D of the volume I report for the United States, regions, States, SMSA's with a population of 250,000 or more, and central cities of these SMSA's. The statistics shown in each of the State parts of the volume I report are summarized for the United States in Volume I, Part 1, "United States Summary." Chapters C and D were originally published as separate paperbound reports in series PC(1)-C, "General Social and Economic Characteristics," and PC(1)-D, "Detailed Characteristics."

Poverty statistics also are shown for census tracts of 241 SMSA's and selected adjacent areas in **1970 Census of Population and Housing, Census Tracts, Series PHC(1)**. A description of poverty data contained in volume I and census tract reports can be found in Data Access Description No. 29, "Low-Income Data from the 1970 Census."

1960 Census

Statistics for low-income areas as defined by the use of 1960 census data are available for metropolitan

areas and their central cities in 1960 Census of Population, **Supplementary Reports, Series PC(S1)-54, "Poverty Areas in the 100 Largest Metropolitan Areas."** The definition of low-income areas based on 1960 census data differs from the definition used in this report. (See "Definitions.") The PC(S1)-54 report contains information on persons and families by age, race, family status, poverty status in 1959, and sex and age of family head. Census tract maps showing the delineation of these low-income areas were published by the Office of Economic Opportunity in a report entitled **Maps of Major Concentrations of Poverty in SMSA's of 250,000 or More Population.**

Special Censuses

Two reports based on special censuses conducted by the Bureau of the Census during the 1960's provide survey data and comparable 1960 census data for what are essentially neighborhood subdivisions of the 1960 census low-income areas. **Current Population Reports, Series P-23, No. 18, "Characteristics of the South and East Los Angeles Areas: November 1965,"** presents social, economic, and housing data for seven neighborhoods in South Los Angeles and three neighborhoods in East Los Angeles. **Current Population Reports, Series P-23, No. 21, "Characteristics of Selected Neighborhoods in Cleveland, Ohio: April 1965,"** presents population characteristics for nine neighborhoods in Cleveland and for the balance of the city, with totals for the city as a whole.

Current Population Survey

Data on the population are collected and published regularly by the Bureau of the Census through its Current Population Survey (CPS), a nationwide survey covering a sample of about 47,000 households. Statistics from the March 1973 CPS for low-income areas based on the 1970 census definition are published in **Current Population Reports, Series P-60, No. 91, "Characteristics of the Low-Income Population: 1972."**

DEFINITIONS

Low-Income Areas

1970 census definition.—For this report, a low-income area consists of all census tracts in which 20

percent or more of all persons were below the poverty level in 1969. This method of defining low-income areas, which differs from other methods used in the past, was developed to provide a statistical index based on income only and to utilize the small-area data on poverty status which were available in 1970 for the first time in a decennial census.

To arrive at this definition, research was conducted by the Bureau's staff that would delineate for a given year low-income areas similar in size and location to those delineated by the 1960 census definition, which was based on an unweighted combination of five poverty-related socioeconomic characteristics. The researchers utilized a special tabulation of 1960 census data for census tracts in a sample of large metropolitan areas. Low-income areas defined by the 1960 census definition were chosen from this sample and were compared to low-income areas defined by aggregating all census tracts with poverty rates above selected cutoff values. This comparison showed that areas consisting of census tracts with poverty rates of 20 percent or more most closely approximated low-income areas defined by the 1960 method.

Although the majority of low-income areas selected by this definition are adjacent to each other, some represent scattered or isolated pockets of poverty. Tracts which contain fewer than 100 persons or which consist entirely of crews of vessels are excluded from low-income areas.

Previous definitions.—The 1960 definition of low-income areas was developed by the Bureau of the Census as part of its work for the Office of Economic Opportunity to identify areas of major concentrations of poverty within large metropolitan areas. This definition consisted of ranking census tracts in metropolitan areas with a 1960 population of 250,000 or more according to the relative presence of each of the following equally weighted poverty-linked characteristics: (1) Families with money incomes below \$3,000; (2) children under 18 years old not living with both parents; (3) persons 25 years and over with less than 8 years of school completed; (4) unskilled males (laborers and service workers) in the civilian labor force; and (5) housing units dilapidated or lacking some or all plumbing facilities. Those tracts falling in the lowest quartile of the ranking were defined as poor tracts and further adjusted for contiguity and minimum size in order to approximate neighborhood concentrations of poverty. For a detailed explanation of this definition, see **Current Population Reports, Series P-23, No. 19, "Characteristics of Families Residing in 'Poverty Areas': March 1966."**

These 1960 low-income areas were revised in 1969 to provide more up-to-date delineations of low-income areas in selected large cities. The revised areas were used as survey areas for the Census Employment Survey. This survey, in which detailed socioeconomic information on employment-related problems was collected in each of 60 urban and 7 rural areas, was conducted as part of the overall program of the 1970 census. Because of the timing of this project, 1970 census data could not be used to select the survey areas. Instead, changes were made to the 1960 low-income areas based on more recent information acquired from a wide variety of sources and corroborated by knowledgeable local experts. For further information on these CES areas, see **1970 Census of Population and Housing, Employment Profiles of Selected Low-Income Areas, Series PHC(3)**.

Low-Income Neighborhoods

To provide a more detailed geographic breakdown of large central city low-income areas, these areas were further subdivided into "neighborhoods," which consisted of contiguous census tracts with a combined population of 20,000 or more. The neighborhood boundaries were based on currently available socioeconomic data and on recommendations from representatives of local groups such as community action, model cities, city planning, and welfare agencies. In some cases, it was necessary to combine neighborhoods to meet the minimum size require-

ment of 20,000. A few exceptions to this minimum size requirement were made where it was deemed appropriate. It should be noted that detailed sample data become less reliable as the size of the neighborhood decreases.

In some cases, isolated tracts or groups of tracts could not be classified as a neighborhood and were included in a category called "remainder of low-income area." Data were tabulated for these "remainders" if they contained a population of 20,000 or more. Inspection of maps and tract listings is necessary to determine the usefulness of the data for these "remainders."

Poverty Status in 1969

Families and unrelated individuals are classified as being above or below the poverty level using the poverty index adopted by a Federal Interagency Committee in 1969. This index provides a range of income cutoffs or "poverty thresholds" adjusted to take into account such factors as family size, sex and age of family head, number of children, and farm-nonfarm residence. The poverty cutoffs for farm families have been set at 85 percent of the nonfarm levels. These income cutoffs are updated every year to reflect the changes in the Consumer Price Index. The average poverty threshold for a nonfarm family of four was \$3,748 in 1969. (See table C.)

Table C. Weighted Average Thresholds at the Low-Income Level in 1969 By Size of Family Unit, Farm-Nonfarm Residence, and Sex of Head

(Figures in dollars. Based on 5-percent sample)

Size of family unit	Total	Nonfarm			Farm		
		Total	Male head	Female head	Total	Male head	Female head
All unrelated individuals....	1,844	1,849	1,931	1,795	1,570	1,615	1,517
Under 65 years.....	1,897	1,901	1,980	1,830	1,631	1,680	1,550
65 years and over.....	1,749	1,755	1,770	1,750	1,499	1,510	1,490
All families.....	3,380	3,400	3,435	3,124	2,929	2,944	2,610
2 persons.....	2,372	2,388	2,398	2,328	2,017	2,021	1,938
Head under 65 years.....	2,446	2,461	2,474	2,378	2,098	2,102	1,999
Head 65 years and over...	2,200	2,219	2,221	2,204	1,880	1,881	1,871
3 persons.....	2,909	2,927	2,942	2,823	2,478	2,484	2,363
4 persons.....	3,727	3,748	3,750	3,727	3,192	3,193	3,166
5 persons.....	4,385	4,413	4,416	4,372	3,757	3,757	3,747
6 persons.....	4,924	4,958	4,960	4,935	4,224	4,224	4,231
7 or more persons.....	6,058	6,111	6,123	6,009	5,196	5,197	5,152

Source: 1970 Census of Population, Volume II, Subject Reports, Series PC(2)-9A, "Low-Income Population."

The low-income concept has been developed as a tool for measuring the overall economic well-being of the population at the lower end of the income scale. It is an attempt to identify in dollar terms a minimum level of income adequacy for families of different types in keeping with American consumption patterns. Based on an analysis of the percent of income devoted to food expenditures, an estimate was developed which specifies the minimum cost at which an American family, making average choices, can be provided with a diet meeting recommended nutritional goals. Consequently, it is an overall statistical yardstick which reflects the different consumption requirements of families of different size, taking into account family composition (number of adults and number of children) and farm-nonfarm residence. Insofar as individual circumstances or consumption patterns differ, the dollar value of the low-income threshold for a given family size may not represent the money income required by an individual family to maintain a level of economic well-being equivalent to other families with similar incomes. For a detailed explanation of the low-income concept, see appendix B in the volume I reports.

Income in 1969

Income data collected in the census are limited to money income received before payments for personal income taxes and deductions for Social Security, union dues, Medicare, etc. Money income is the sum of the amounts received from earnings; Social Security and public assistance payments; dividends, interest, and rent; unemployment and workmen's compensation; government and private employee pensions; and other periodic income. (Certain money receipts such as capital gains are not included.) Therefore, money income does not reflect the fact that many families receive part of their income in the form of nonmoney transfers such as food stamps, health benefits, and subsidized housing; that many farm families receive nonmoney income in the form of rent-free housing and goods produced and consumed on the farm; or that nonmoney incomes also are received by some nonfarm residents which often take the form of the use of business transportation and facilities, full or partial payments by business for retirement programs, medical and educational expenses, etc. These elements should be considered when comparing income levels.

Since the reporting of income frequently is based on memory rather than on records, there is a tendency to underreport or fail to report some elements of income. Underreporting is especially pronounced for income sources that are not derived

from earnings, such as Social Security and public assistance payments, interest and dividends, etc. For example, in the Current Population Survey it has been determined that income earned from wages or salary tends to be much better reported than other sources of income and is nearly equal to independently derived benchmark estimates. By contrast, recent CPS income data on Social Security and public assistance payments to beneficiaries have averaged approximately 80 and 75 percent, respectively, of their benchmark estimates. In the census the underreporting of these specified types of income and the number of recipients of such income compared with administrative records reflects, for the most part, the failure of some respondents to report them accurately, rather than the failure to enumerate persons receiving them.

Race

Data are shown separately in each table for two racial categories, white and Negro. The category "white" includes persons who indicated their race as white, as well as persons who did not classify themselves in one of the specific race categories on the questionnaire but entered Mexican, Puerto Rican, or a response suggesting Indo-European stock. The category "Negro" includes persons who indicated their race as Negro or black, as well as persons who did not classify themselves in one of the specific race categories on the questionnaire but who had such entries as Jamaican, Trinidadian, West Indian, Haitian, and Ethiopian. The classification of families and households by race refers to the race of the family or household head.

Other races shown separately in table 1 are American Indian, Japanese, Chinese, and Filipino. The category "American Indian" includes persons who indicated their race as American Indian, as well as persons who did not indicate a specific race category but reported the name of an Indian tribe.

Persons of Spanish Language

Persons of Spanish language comprise persons who reported Spanish as their mother tongue (i.e., the language usually spoken in the home when these persons were children) and also include all other persons in families in which the head or wife reported Spanish as his or her mother tongue. Persons of Spanish language may be of any race, although the large majority are white. Table 1 shows the distribution of persons of Spanish language by race.

Standard Metropolitan Statistical Areas

Except in the New England States, a standard metropolitan statistical area (SMSA) is a county or group of contiguous counties which contains at least one city of 50,000 inhabitants or more, or "twin cities" with a combined population of at least 50,000. In addition to the county or counties containing such a city or cities, contiguous counties are included in an SMSA if, according to certain criteria, they are socially and economically integrated with the central city. In the New England States, SMSA's consist of towns and cities instead of counties. Each SMSA must include at least one central city, and the complete title of an SMSA identifies the central city or cities. For a detailed description of the criteria used in defining SMSA's, see the Office of Management and Budget (formerly Bureau of the Budget) publication, *Standard Metropolitan Statistical Areas: 1967*, U.S. Government Printing Office, Washington, D.C. 20402.

Census Tracts

Census tracts are small areas averaging about 4,000 residents into which large cities and adjacent areas have been divided for statistical purposes. Tract boundaries were established cooperatively by local committees and the Bureau of the Census with the intention of maintaining them over a long time so that comparisons could be made from census to census. Generally, tracts were designed to be relatively uniform with respect to population characteristics, economic status, and living conditions. For further information, see *1970 Census of Population and Housing, Census Tracts, Series PHC(1)*.

SAMPLE SIZE

The data presented here are based on a 15-percent sample and are therefore subject to sampling variability. Definitions and technical explanations relating to the statistics in this report, as well as information on sampling variability, may be found in the volume II report, PC(2)-9B, "Low-Income Areas in Large Cities" or in the volume I reports.

Inmates of institutions, members of the Armed Forces living in barracks, college students living in dormitories, and unrelated individuals under 14 years old are excluded from the tabulations. Thus, the number of all persons shown for a given area will not equal the total population counts commonly cited from census reports.

DERIVED FIGURES AND SYMBOLS

Derived Figures

Percents, medians, and means, as well as certain rates and ratios, are used in this report. For all types of derived figures shown, the figure is not presented if the base is smaller than the minimum number (132) prescribed for the 15-percent sample. Instead, a symbol has been inserted.

Symbols

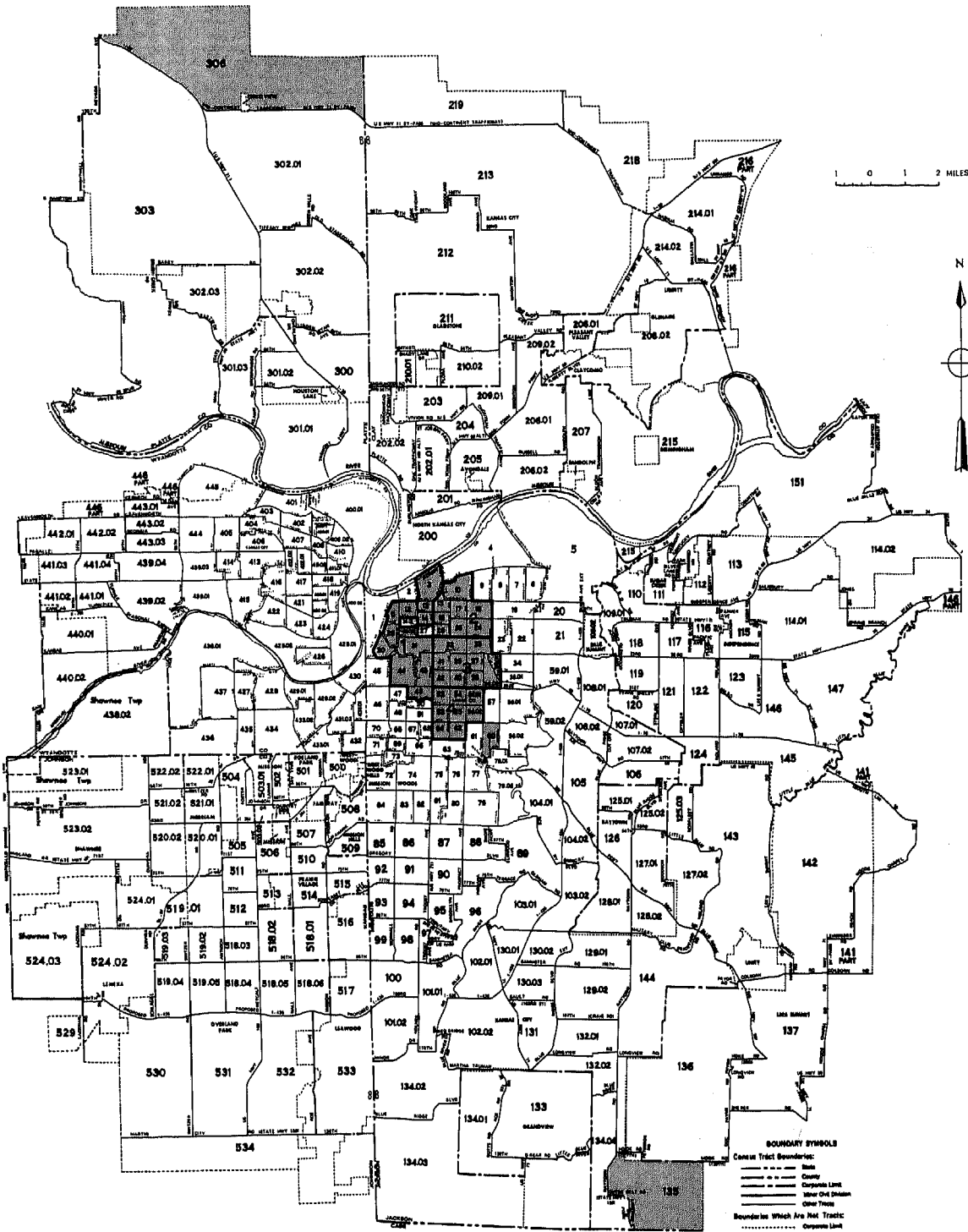
A dash "--" signifies zero. Three dots "... " mean that the data are being withheld to avoid disclosure of information for individuals or households or that the base for the derived figure is too small for it to be shown. Any other symbols used are explained on the individual table in which they occur.

Table D. Census Tract Composition of Low-Income Neighborhoods in Kansas City, Mo.: 1970



<u>Neighborhood 1</u>			<u>Neighborhood 3</u>		<u>Neighborhood 4</u>	
3	14	31	32	38	52	56.01
11	28.02	43	33	39	53	56.02
12	29	44	36.01	40	54	62
13	30	49	36.02	41	55	64
			37	42		
<u>Neighborhood 2</u>						
10	18					
15	24					
16	25					
17	26					

NOTE: Neighborhoods 1 to 4 are located entirely within Jackson County.

KANSAS CITY, MISSOURI 1970 LOW-INCOME NEIGHBORHOODS



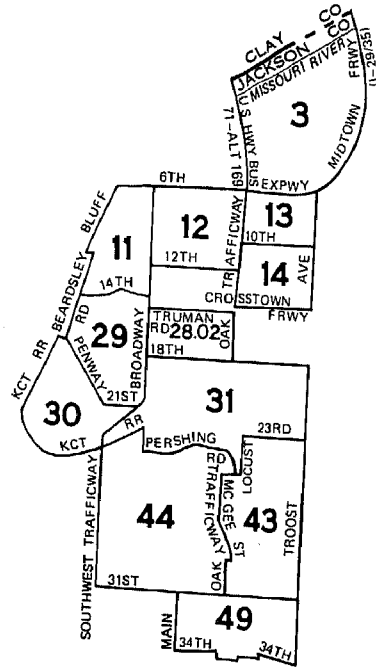
BOUNDARY SYMBOLS
 Census Tract Boundaries:
 - - - - - Main
 - - - - - County
 - - - - - Corporate Limit
 - - - - - Inter-City District
 - - - - - Other Tract
 Boundaries Which Are Not Tract:
 - - - - - Corporate Limit
 - - - - - Inter-City District

 **LOW-INCOME NEIGHBORHOOD**
 **LOW-INCOME AREA**

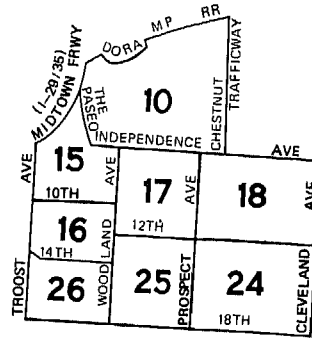
U.S. DEPARTMENT OF COMMERCE
 SOCIAL AND ECONOMIC STATISTICS ADMINISTRATION
 BUREAU OF THE CENSUS

KANSAS CITY, MISSOURI 1970 LOW-INCOME NEIGHBORHOODS

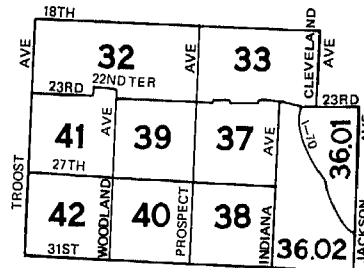
NEIGHBORHOOD 1



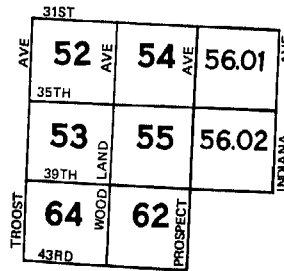
NEIGHBORHOOD 2



NEIGHBORHOOD 3



NEIGHBORHOOD 4



U.S. DEPARTMENT OF COMMERCE
SOCIAL AND ECONOMIC STATISTICS ADMINISTRATION
BUREAU OF THE CENSUS

Table A-1. Selected Characteristics of Persons and Families by Residence in Census Tracts With a Poverty Rate of 20 Percent or More: 1970

(Excludes inmates of institutions, members of Armed Forces living in barracks, college students living in dormitories, and unrelated individuals under 14 years. Data based on 15-percent sample, see text. For minimum base for derived figures (percent, median, etc.) and meaning of symbols, see text.)

Kansas City, Missouri	Neighborhood 01				Neighborhood 02				Neighborhood 03			
	All races	White	Negro	Persons of Spanish language	All races	White	Negro	Persons of Spanish language	All races	White	Negro	Persons of Spanish language
RACE												
All Income Levels												
All persons	22 363	20 037	2 116	2 820	22 689	13 436	9 177	470	27 589	1 116	26 441	289
Persons of Spanish language	2 820	2 761	29	2 820	470	348	122	470	289	143	146	289
White	20 037	20 037	-	2 761	13 436	13 436	-	348	1 116	1 116	-	143
Negro	2 116	-	2 116	29	9 177	-	9 177	122	26 441	-	26 441	146
Other races	210	-	-	30	76	-	-	-	32	-	-	-
American Indian	109	-	-	15	40	-	-	-	25	-	-	-
Japanese	-	-	-	-	16	-	-	-	-	-	-	-
Chinese	-	-	-	-	-	-	-	-	7	-	-	-
Filipino	26	-	-	-	-	-	-	-	-	-	-	-
All other	75	-	-	15	20	-	-	-	-	-	-	-
Percent Below Poverty Level												
All persons	27.4	25.5	43.6	24.8	33.9	27.2	43.9	46.2	28.6	34.8	28.4	20.8
Persons of Spanish language	24.8	24.4	-	24.8	46.2	44.0	...	46.2	20.8	34.3	7.5	20.8
White	25.5	25.5	-	24.4	27.2	27.2	-	44.0	34.8	34.8	-	34.3
Negro	43.6	-	43.6	-	43.9	-	43.9	...	28.4	-	28.4	7.5
Other races	41.9	-	-	-	-	-	-	-
American Indian	...	-	-	-	-	-	-	-
Japanese	-	-	-	-	-	-	-	-	-	-	-	-
Chinese	-	-	-	-	-	-	-	-	-	-	-	-
Filipino	...	-	-	...	-	-	-	-	-	-	-	-
All other	...	-	-	...	-	-	-	-	-	-	-	-
RELATIONSHIP TO HEAD OF HOUSEHOLD FOR PERSONS BELOW POVERTY LEVEL												
All persons	6 126	5 116	922	698	7 690	3 657	4 026	217	7 894	388	7 500	60
65 years and over	1 644	1 523	99	93	1 466	903	563	14	1 636	165	1 465	-
In households	5 709	4 730	891	698	7 576	3 550	4 026	217	7 713	329	7 378	60
Head of household	2 930	2 598	292	203	2 965	1 615	1 350	53	3 104	223	2 875	29
Family head	896	739	133	126	1 355	693	662	39	1 419	71	1 348	18
65 years and over	190	161	14	27	229	147	82	-	326	37	299	-
Female	338	248	81	41	721	258	463	10	735	35	690	-
Primary individual	2 034	1 859	159	77	1 610	922	688	14	1 685	152	1 527	11
65 years and over	1 122	1 055	60	54	971	621	350	14	860	64	790	-
Female	1 133	1 069	64	24	1 065	665	400	6	1 102	92	1 010	-
Related child under 18 years	1 938	1 408	508	389	3 348	1 260	2 088	130	3 019	30	2 989	11
Related child under 6 years	686	489	188	154	1 025	449	576	-	1 032	4	1 028	-
Other relative of head	691	591	84	97	1 003	567	436	34	1 150	54	1 096	20
Not related to head	150	133	7	9	260	108	152	-	440	22	418	-
In group quarters	417	386	31	-	114	107	-	-	181	59	122	-
AGE												
All males below poverty level												
Under 3 years	2 795	2 362	385	337	3 139	1 483	1 649	69	3 273	161	3 106	51
3 to 5 years	223	160	54	20	223	105	118	-	249	-	249	-
6 to 13 years	141	106	35	50	232	80	152	-	834	-	834	-
14 to 17 years	376	272	96	70	861	316	545	22	834	-	834	-
18 to 21 years	212	170	42	46	310	134	176	17	214	11	203	11
22 to 24 years	153	139	5	12	104	57	47	-	172	19	153	19
25 to 34 years	132	132	-	16	62	51	11	-	130	39	91	-
35 to 44 years	158	145	13	12	179	94	85	-	119	23	96	-
45 to 54 years	159	148	11	30	184	112	65	13	152	18	134	10
55 to 64 years	170	160	10	15	296	204	92	9	243	-	243	11
65 years and over	309	246	63	9	171	85	86	-	308	6	302	-
Median age	762	684	56	57	517	245	272	8	615	45	564	-
	34.2	37.9	13.7	15.5	16.3	23.9	13.2	...	19.4	29.0	17.8	...
All females below poverty level												
Under 3 years	3 331	2 754	537	361	4 551	2 174	2 377	148	4 621	227	4 394	9
3 to 5 years	165	94	71	30	266	126	140	-	307	-	307	-
6 to 13 years	157	129	28	54	304	138	166	-	239	4	235	-
14 to 17 years	549	379	165	101	874	274	600	74	666	15	651	-
18 to 21 years	177	155	17	35	350	132	218	24	338	9	329	9
22 to 24 years	204	166	33	-	238	155	83	17	284	7	277	-
25 to 34 years	100	82	18	16	129	53	76	-	217	16	201	-
35 to 44 years	272	210	58	23	348	112	236	10	306	15	291	-
45 to 54 years	190	167	18	21	414	175	239	12	370	10	360	-
55 to 64 years	298	258	32	17	320	181	139	5	451	6	445	-
65 years and over	337	275	54	28	359	170	189	-	422	25	397	-
Median age	682	639	43	36	949	658	291	6	1 021	120	901	-
	36.2	43.7	14.1	12.6	27.3	39.5	20.1	13.0	32.5	65+	30.8	...
YEARS OF SCHOOL COMPLETED												
All Income Levels												
Male, 22 years and over	7 670	6 983	604	674	6 063	4 038	1 997	115	7 477	389	7 068	82
Elementary: 0 to 7 years	1 796	1 593	181	266	1 697	1 054	636	20	1 885	47	1 832	6
8 years	1 289	1 200	81	55	1 000	693	307	14	1 098	93	1 005	10
High school: 1 to 3 years	1 571	1 412	127	181	1 377	947	423	34	1 853	89	1 764	8
4 years	1 819	1 666	139	147	1 300	821	479	41	1 744	139	1 605	26
College: 1 to 3 years	653	587	66	25	394	274	106	-	654	5	635	25
4 years or more	542	525	10	-	295	249	46	6	243	16	227	7
Median years of school completed	10.4	10.5	9.9	9.3	9.7	9.9	9.4	...	10.2	10.8	10.2	...

Table A-1. Selected Characteristics of Persons and Families by Residence in Census Tracts With a Poverty Rate of 20 Percent or More: 1970—Continued

[Excludes inmates of institutions, members of Armed Forces living in barracks, college students living in dormitories, and unrelated individuals under 14 years. Data based on 15 percent sample, see text. For minimum base for derived figures (percent, median, etc.) and meaning of symbols, see text]

	Neighborhood 01				Neighborhood 02				Neighborhood 03			
	All races	White	Negro	Persons of Spanish language	All races	White	Negro	Persons of Spanish language	All races	White	Negro	Persons of Spanish language
Kansas City, Missouri												
YEARS OF SCHOOL COMPLETED—Con.												
All Income Levels—Con.												
Female, 22 years and over												
Elementary: 0 to 7 years	7 742	7 107	577	698	7 737	4 826	2 877	106	9 293	488	8 793	49
8 years	1 590	1 385	181	241	1 944	1 213	720	34	2 022	97	1 925	6
High school: 1 to 3 years	1 371	1 322	44	103	1 103	675	428	13	1 126	72	1 054	—
4 years	1 750	1 596	149	137	2 211	1 445	757	34	2 760	128	2 632	12
College: 1 to 3 years	2 126	1 940	162	200	1 785	1 094	683	12	2 192	109	2 083	16
4 years or more	547	506	41	10	422	242	180	13	756	68	688	—
Median years of school completed	358	358	—	7	272	157	109	—	437	14	416	9
	10.6	10.6	10.3	9.1	10.1	10.1	10.2	...	10.6	10.8	10.6	...
Income Below Poverty Level												
Male, 22 years and over												
Less than 8 years	1 690	1 515	153	139	1 409	791	411	30	1 567	131	1 430	21
8 to 11 years	540	453	72	75	541	232	309	13	560	24	530	—
12 years or more	678	609	62	38	607	423	177	17	599	54	545	10
	472	453	19	26	261	136	125	—	408	53	355	11
Female, 22 years and over												
Less than 8 years	2 079	1 831	223	141	2 519	1 349	1 170	33	2 787	192	2 595	—
8 to 11 years	632	521	98	81	846	516	330	6	952	60	892	—
12 years or more	912	822	90	44	1 183	622	561	22	1 188	80	1 108	—
	535	488	35	16	490	211	279	5	647	52	595	—
EMPLOYMENT STATUS AND AGE												
All Income Levels												
Male												
16 to 21 years¹												
Employed	813	707	80	117	911	555	356	15	1 234	74	1 160	50
Unemployed	512	470	33	70	539	361	178	15	568	46	522	29
Not in labor force	66	56	10	—	56	24	32	—	120	17	103	17
	226	172	37	47	309	163	146	—	525	11	514	4
22 to 64 years¹												
Employed	5 881	5 328	492	530	4 677	3 187	1 462	101	5 732	276	5 448	82
Unemployed	4 616	4 196	379	461	3 444	2 372	1 051	64	4 645	206	4 431	61
Not in labor force	324	302	17	39	248	152	96	—	185	—	185	—
Family head, 22 to 64 years ¹	941	830	96	30	979	663	309	31	855	70	785	21
Employed	2 753	2 520	205	377	2 935	2 108	819	73	3 453	127	3 318	51
Unemployed	2 319	2 122	184	344	2 356	1 712	636	60	3 066	102	2 956	41
Not in labor force	128	111	17	17	137	93	44	—	101	—	101	—
	306	287	4	16	436	303	133	7	280	25	255	10
Female												
16 to 21 years												
Employed	1 127	1 024	88	172	1 048	660	388	36	1 467	55	1 412	26
Unemployed	586	548	23	92	368	257	111	23	667	31	636	7
Not in civilian labor force	35	25	10	11	48	48	—	—	113	—	113	—
	506	451	55	69	632	355	277	13	687	24	663	19
22 to 64 years¹												
Employed	5 376	4 847	471	614	5 627	3 373	2 227	86	6 898	272	6 614	43
Unemployed	2 981	2 719	240	303	3 059	1 745	1 291	25	4 013	116	3 885	19
Not in civilian labor force	118	112	6	16	142	57	85	—	263	4	259	6
Family head, 22 to 64 years ¹	2 277	2 016	225	295	2 426	1 571	851	61	2 622	152	2 470	18
Employed	762	603	144	103	1 233	496	724	19	1 363	16	1 347	—
Unemployed	480	375	101	73	796	291	492	9	808	—	808	—
Not in civilian labor force	29	29	—	—	67	30	37	—	71	—	71	—
Wife of head, 22 to 64 years	253	199	43	30	370	175	195	10	484	16	468	—
Employed	2 425	2 234	158	374	2 748	1 981	767	59	3 170	121	3 044	37
Unemployed	976	927	41	125	1 282	851	431	16	1 635	53	1 577	19
Not in civilian labor force	67	61	6	16	30	19	11	—	61	—	61	—
	1 382	1 246	111	233	1 436	1 111	325	43	1 474	68	1 406	18
Income Below Poverty Level												
Male												
16 to 21 years¹												
Employed	247	215	23	33	229	129	100	7	265	30	235	30
Unemployed	144	130	5	21	118	87	31	7	93	22	71	22
Not in labor force	38	38	—	—	5	5	—	—	18	8	10	8
	65	47	18	12	106	37	69	—	154	—	154	—
22 to 64 years¹												
Employed	928	831	97	82	892	546	339	22	952	86	866	21
Unemployed	455	427	28	56	398	251	147	22	567	39	528	—
Not in labor force	54	46	8	20	38	13	25	—	35	—	35	—
Family head, 22 to 64 years ¹	419	358	61	6	456	282	167	—	337	47	290	21
Employed	332	299	33	59	447	302	145	22	397	10	387	10
Unemployed	209	188	21	41	268	177	91	22	293	—	293	—
Not in labor force	39	31	8	12	10	—	10	—	16	—	16	—
	84	80	4	6	169	125	44	—	82	10	72	10

¹Includes members of Armed forces not living in barracks and not shown separately.

Table A-1. Selected Characteristics of Persons and Families by Residence in Census Tracts With a Poverty Rate of 20 Percent or More: 1970—Continued

(Excludes inmates of institutions, members of Armed Forces living in barracks, college students living in dormitories, and unrelated individuals under 14 years. Data based on 15-percent sample, see text. For minimum base for derived figures (percent, median, etc.) and meaning of symbols, see text.)

Kansas City, Missouri	Neighborhood 01				Neighborhood 02				Neighborhood 03			
	All races	White	Negro	Persons of Spanish language	All races	White	Negro	Persons of Spanish language	All races	White	Negro	Persons of Spanish language
EMPLOYMENT STATUS AND AGE—Con.												
Income Below Poverty Level—Con.												
Female												
16 to 21 years	283	230	43	17	404	230	174	29	479	16	463	9
Employed	123	103	10	10	136	99	37	23	171	7	164	—
Unemployed	15	5	10	—	23	23	—	—	68	—	68	—
Not in civilian labor force	145	122	23	7	245	108	137	6	240	9	231	9
22 to 64 years	1 197	992	180	105	1 570	691	879	27	1 766	72	1 694	—
Employed	358	282	64	19	618	243	375	5	700	15	685	—
Unemployed	67	67	—	—	72	23	49	—	88	—	88	—
Not in civilian labor force	772	643	116	86	880	425	455	22	978	57	921	—
Family head, 22 to 64 years	300	218	73	34	588	179	409	10	587	16	571	—
Employed	104	70	30	14	289	51	238	—	212	—	212	—
Unemployed	29	29	—	—	54	23	31	—	34	—	34	—
Not in civilian labor force	167	119	43	20	245	105	140	10	341	16	325	—
Wife of head, 22 to 64 years	295	251	28	59	399	263	136	17	381	—	381	—
Employed	52	39	5	5	101	64	37	5	128	—	128	—
Unemployed	23	23	—	—	11	—	11	—	11	—	11	—
Not in civilian labor force	220	189	23	54	287	199	88	12	242	—	242	—
SELECTED OCCUPATIONS												
All Income Levels												
Male employed, 22 to 64 years ¹	4 616	4 196	379	461	3 444	2 372	1 051	64	4 645	206	4 431	61
Prof., tech., and kindred workers	477	465	12	28	223	150	67	7	259	10	249	—
Health workers, exc. practitioners	—	—	—	—	36	28	8	—	17	—	17	—
Teachers, elem. and secondary	14	14	—	6	12	—	12	—	16	—	16	—
Managers and admin., exc. farm	351	342	9	6	175	162	13	—	160	—	160	—
Self-employed	47	47	—	—	24	19	5	—	37	—	37	—
Sales workers	244	238	6	—	109	79	30	—	134	10	124	—
Retail trade	128	128	—	—	81	74	7	—	66	10	56	—
Clerical and kindred workers	510	478	25	36	267	158	109	—	477	30	447	22
Postal clerks and mail carriers	61	47	7	7	70	17	53	—	167	—	167	—
Shipping, receiving & stock clerks	111	99	12	21	47	47	—	—	65	22	43	5
Bkpr., cashiers, & bank tellers	47	41	6	—	21	7	14	—	—	—	—	—
Craftsmen and kindred workers	760	724	22	85	692	570	122	—	568	77	483	12
Construction craftsmen	133	126	7	15	72	57	15	—	97	4	85	4
Mechanics and repairmen	90	90	—	19	143	122	21	—	115	—	115	—
Operatives, except transport	679	632	41	130	693	442	243	5	682	22	660	—
Assemblers	72	65	7	7	37	32	5	—	55	—	55	—
Checkers, exam., & inspectors; mfg.	27	27	—	—	27	14	13	—	26	—	26	—
Pkr. & wrappers, inc. meat & prod.	52	46	—	—	30	10	20	—	32	—	32	—
Sewers, stitchers, & textile oper.	9	9	—	—	6	6	—	—	—	—	—	—
Transport equipment operatives	371	332	39	36	300	234	66	9	314	—	314	—
Truck drivers	111	111	—	—	177	155	22	5	101	—	101	—
Laborers, except farm	588	484	104	103	517	283	234	19	1 074	37	1 037	14
Construction	62	56	6	8	115	59	56	—	202	—	202	5
Freight, material, & stock handlers	160	129	31	48	130	106	24	6	273	9	264	9
Service workers, exc. private hshld. ²	630	495	121	37	460	294	159	20	900	20	880	13
Cleaning service workers	143	118	25	23	117	69	48	—	362	7	355	7
Food service workers	180	159	21	5	76	61	15	—	79	8	71	—
Health service workers	24	16	8	9	7	7	—	—	41	5	36	—
Personal service workers	72	52	6	—	42	32	10	—	74	—	74	—
Protective service workers	21	14	7	—	47	25	22	13	51	—	51	6
Private household workers	—	—	—	—	—	—	—	—	31	—	31	—
Female employed, 22 to 64 yrs. ²	2 981	2 719	240	303	3 059	1 745	1 291	25	4 013	116	3 885	19
Prof., tech., and kindred workers	333	328	5	14	343	184	153	—	440	34	399	9
Health workers, exc. practitioners	101	96	5	14	115	75	40	—	123	—	123	—
Teachers, elem. and secondary	57	57	—	—	84	34	50	—	139	—	139	—
Managers and admin., exc. farm	160	149	11	15	128	89	35	—	61	—	61	—
Self-employed	30	24	6	5	6	—	6	—	25	—	25	—
Sales workers	106	106	—	—	111	111	—	—	89	19	70	—
Retail trade	58	58	—	—	94	94	—	—	82	19	63	—
Clerical and kindred workers	1 112	1 085	27	60	794	513	281	6	851	35	816	4
Bkpr., cashiers, & bank tellers	210	210	—	—	66	59	7	—	44	4	40	—
Secretaries, steno., & typists	214	199	15	12	198	141	57	6	128	—	128	—
Craftsmen and kindred workers	107	93	14	19	84	72	12	9	69	—	69	—
Operatives, except transport	404	372	10	109	624	432	179	5	424	13	411	—
Laundry & dry cleaning operatives ⁴	47	36	6	14	77	9	64	—	97	8	89	—
Assemblers	16	12	4	6	78	36	42	—	64	—	64	—
Pkr. & wrappers, inc. meat & prod.	77	77	—	31	70	70	—	—	31	—	31	—
Sewers, stitchers, & textile oper.	56	52	—	17	82	82	—	—	29	—	29	—
Transport equipment operatives	—	—	—	—	11	—	11	—	—	—	—	—
Laborers, except farm	18	18	—	—	46	28	18	—	59	—	59	—
Service workers, exc. private hshld. ³	674	532	142	86	769	304	465	—	1 238	15	1 218	6
Cleaning service workers	54	43	11	27	192	60	132	—	249	8	236	6
Food service workers	184	178	6	18	145	101	44	—	179	—	179	—
Health service workers	115	75	40	29	64	42	22	—	178	—	178	—
Personal service workers	69	54	15	12	61	34	27	—	140	7	133	—
Private household workers	67	36	31	—	149	12	137	5	746	—	746	—

¹Includes "farm workers" not shown separately. cases are included in the total but not in the distribution.

²Allocated cases are included in the total but not in the distribution.

³Includes "clothing ironers and pressers."

⁴"Protective service workers" and allocated

Table A-1. Selected Characteristics of Persons and Families by Residence in Census Tracts With a Poverty Rate of 20 Percent or More: 1970—Continued

[Excludes inmates of institutions, members of Armed Forces living in barracks, college students living in dormitories, and unrelated individuals under 14 years. Data based on 15 percent sample, see text. For minimum base for derived figures (percent, median, etc.) and meaning of symbols, see text]

	Neighborhood 01				Neighborhood 02				Neighborhood 03			
	All races	White	Negro	Persons of Spanish language	All races	White	Negro	Persons of Spanish language	All races	White	Negro	Persons of Spanish language
SELECTED OCCUPATIONS—Con.												
Income Below Poverty Level												
Male employed, 22 to 64 years²												
Prof., tech., and kindred workers	455	427	28	56	398	251	147	22	567	39	328	—
Managers and admin., exc. farm	34	34	—	11	8	—	—	—	—	—	—	—
Sales workers	21	21	—	—	15	7	8	—	28	—	28	—
Clerical and kindred workers	4	4	—	—	—	—	—	—	16	—	16	—
Craftsmen and kindred workers	30	30	—	—	14	5	—	—	6	—	6	—
Operatives, except transport	69	64	5	5	30	20	9	—	25	—	25	—
Transport equipment operatives	69	69	—	13	80	65	10	—	73	—	73	—
Laborers, except farm	46	46	—	6	58	35	15	5	64	9	55	—
Service workers, exc. private hshld	54	54	—	12	80	80	53	13	143	25	118	—
Private household workers	128	105	23	9	52	39	13	—	148	5	143	—
	—	—	—	—	—	—	—	—	14	—	14	—
Female employed, 22 to 64 yrs.²												
Prof., tech., and kindred workers	358	282	64	19	618	243	375	5	700	15	485	—
Managers and admin., exc. farm	—	—	—	—	38	5	33	—	45	7	38	—
Sales workers	10	10	—	—	18	10	8	—	15	—	15	—
Clerical and kindred workers	7	7	—	—	37	37	—	—	8	—	8	—
Craftsmen and kindred workers	54	54	—	—	75	44	31	—	68	—	68	—
Operatives, except transport	13	13	—	—	—	—	—	—	—	—	—	—
Transport equipment operatives	60	42	6	5	110	70	40	5	75	—	75	—
Laborers, except farm	12	—	—	—	—	—	—	—	—	—	—	—
Service workers, exc. private hshld	178	120	58	14	18	—	18	—	—	—	—	—
Private household workers	24	24	—	—	253	77	176	69	206	8	198	—
	—	—	—	—	69	—	—	—	271	—	271	—
FAMILY STATUS AND AGE												
All Income Levels												
Both Sexes												
Head of family:												
14 to 21 yrs.	247	217	30	32	237	167	70	15	237	30	207	17
22 to 54 yrs.	2 791	2 448	313	407	3 469	2 067	1 381	76	3 603	117	3 478	37
Wife of head:												
14 to 21 yrs.	399	357	42	42	296	228	68	18	314	32	282	18
22 to 54 yrs.	1 843	1 670	148	301	2 195	1 541	654	59	2 466	100	2 366	25
Unrelated indiv.:												
14 to 21 yrs.	390	363	8	19	112	98	14	—	221	7	214	—
22 to 54 yrs.	2 944	2 741	203	63	1 506	930	550	28	2 018	204	1 807	11
Female												
Head of family:												
14 to 21 yrs.	50	42	8	9	66	40	26	—	50	—	50	—
22 to 54 yrs.	662	516	137	89	1 080	392	675	10	1 120	16	1 104	—
Unrelated indiv.:												
14 to 21 yrs.	225	215	—	9	66	59	7	—	160	7	153	—
22 to 54 yrs.	1 037	983	54	33	551	317	228	—	936	80	849	—
Income Below Poverty Level												
Both Sexes												
Head of family:												
14 to 21 yrs.	74	61	13	6	91	65	26	7	99	8	91	8
22 to 54 yrs.	542	450	83	85	962	422	540	32	826	26	800	10
Wife of head:												
14 to 21 yrs.	84	78	6	7	67	46	21	11	91	9	82	9
22 to 54 yrs.	216	190	18	51	309	199	110	17	286	—	286	—
Unrelated indiv.:												
14 to 21 yrs.	194	175	—	10	76	69	7	—	137	7	130	—
22 to 54 yrs.	637	590	47	6	534	290	237	—	676	101	575	11
Female												
Head of family:												
14 to 21 yrs.	15	7	8	—	66	40	26	—	36	—	36	—
22 to 54 yrs.	278	203	66	26	564	163	401	—	569	16	553	—
Unrelated indiv.:												
14 to 21 yrs.	116	106	—	—	51	44	7	10	116	7	109	—
22 to 54 yrs.	324	294	30	—	234	111	123	—	381	31	350	—

²Includes "farm workers" not shown separately.

Table A-2. Characteristics of the Population by Residence in Census Tracts With a Poverty Rate of 20 Percent or More: 1970

(Excludes inmates of institutions, members of Armed Forces living in barracks, college students living in dormitories, and unrelated individuals under 14 years. Data based on 15-percent sample, see text. For minimum base for derived figures (percent, median, etc.) and meaning of symbols, see text)

Kansas City, Missouri	Neighborhood 01				Neighborhood 02				Neighborhood 03			
	All races	White	Negro	Persons of Spanish language	All races	White	Negro	Persons of Spanish language	All races	White	Negro	Persons of Spanish language
RELATIONSHIP TO HEAD												
All persons	22 363	20 037	2 116	2 820	22 689	13 436	9 177	470	27 589	1 116	26 441	289
In households	21 542	19 306	2 040	2 820	22 452	13 218	9 165	464	27 288	1 035	26 221	289
Head of household	10 586	9 697	801	766	8 969	5 603	3 326	157	10 072	583	9 462	79
Family head	4 581	4 108	415	603	5 313	3 389	1 903	107	6 315	255	6 046	68
65 years old and over	819	768	36	91	908	618	290	—	1 262	82	1 174	—
Female	971	804	152	121	1 495	669	813	19	1 773	43	1 730	—
Primary individual	6 005	5 589	386	163	3 656	2 214	1 423	50	3 757	328	3 416	11
Female	2 946	2 791	155	72	2 124	1 328	790	14	2 161	183	1 971	—
Related child under 18 years old	5 419	4 554	826	1 217	7 553	3 721	3 818	210	9 013	152	8 861	110
Other relative of head	5 032	4 574	399	802	5 498	3 664	1 819	97	7 310	267	7 038	93
Not related to head	505	481	14	35	432	230	202	—	893	33	860	7
In group quarters	821	731	76	—	237	218	12	6	301	81	220	—
AGE												
Male, all ages	11 022	9 831	1 059	1 362	10 537	6 311	4 198	184	12 737	512	12 205	158
Under 3 years	566	450	107	86	596	310	286	—	724	6	718	—
3 to 5 years	502	404	98	151	586	279	307	—	598	6	592	—
6 to 13 years	1 154	1 020	126	290	1 888	903	985	36	2 193	23	2 170	20
14 to 17 years	568	467	84	88	832	428	404	25	964	47	917	28
18 to 21 years	562	507	40	73	572	353	219	8	781	41	740	28
22 to 24 years	707	657	50	117	374	305	69	—	530	49	481	9
25 to 34 years	1 220	1 104	109	111	1 142	670	466	16	1 081	55	1 026	13
35 to 44 years	1 274	1 107	161	130	1 011	703	293	49	1 253	41	1 204	18
45 to 54 years	1 232	1 160	64	79	1 207	852	348	29	1 463	84	1 379	21
55 to 64 years	1 448	1 300	108	93	1 386	851	535	14	1 405	47	1 358	21
65 years and over	1 789	1 655	112	144	1 386	851	535	14	1 745	113	1 620	—
Median age	35.8	36.8	26.2	20.6	27.7	32.6	19.1	35.4	29.4	41.1	28.7	22.0
Female, all ages	11 341	10 206	1 057	1 458	12 152	7 125	4 979	286	14 852	604	14 236	131
Under 3 years	481	410	71	120	637	365	272	12	712	11	701	7
3 to 5 years	400	331	69	106	664	361	303	14	658	12	646	5
6 to 13 years	1 287	1 044	238	270	1 662	697	951	100	2 091	19	2 072	38
14 to 17 years	577	539	33	130	780	438	342	30	1 190	42	1 148	21
18 to 21 years	854	775	69	134	672	438	234	24	908	32	876	17
22 to 24 years	499	435	52	47	572	331	241	—	549	29	513	9
25 to 34 years	1 172	976	182	206	1 160	574	580	36	1 347	62	1 285	6
35 to 44 years	966	877	79	108	1 208	748	460	18	1 522	66	1 456	12
45 to 54 years	1 304	1 208	88	147	1 365	892	452	15	1 875	54	1 821	4
55 to 64 years	1 435	1 351	70	106	1 322	828	494	17	1 605	61	1 539	12
65 years and over	2 366	2 260	106	84	2 110	1 453	650	20	2 395	216	2 179	—
Median age	38.1	40.8	23.8	20.1	33.4	38.8	26.5	15.3	33.8	49.4	33.0	...
PLACE OF BIRTH												
Total population	22 363	20 037	2 116	2 820	22 689	13 436	9 177	470	27 589	1 116	26 441	289
Born in State of residence	11 496	10 302	1 111	1 643	11 797	7 189	4 594	246	13 100	509	12 579	160
Born in different State	6 416	5 729	628	853	5 831	3 128	2 675	102	8 908	300	8 588	117
Northeast	419	407	12	—	241	217	24	—	51	6	45	—
North Central	3 336	3 097	205	232	2 239	1 707	525	45	2 130	171	1 951	51
South	2 051	1 620	411	143	2 947	880	2 063	32	6 583	85	6 493	39
West	610	605	—	78	404	324	63	25	144	38	99	27
Puerto Rico and outlying areas	24	24	—	24	6	—	6	—	—	—	—	—
Foreign born	1 116	1 029	51	559	591	562	8	51	8	—	8	—
Not reported and other	3 311	2 953	326	141	4 464	2 557	1 894	65	5 573	307	5 266	12
RESIDENCE IN 1965												
Total, 5 years and over	20 681	18 667	1 813	2 414	20 714	12 403	8 235	450	25 306	1 081	24 193	277
Some house as in 1970	8 348	7 749	530	1 358	9 921	5 995	3 884	137	14 773	580	14 181	138
Different house in United States	8 872	8 016	758	784	7 415	4 418	2 989	254	6 632	184	6 433	88
Same county	5 364	4 672	624	684	5 212	2 968	2 244	107	5 169	121	5 040	51
Different county	3 508	3 344	134	100	2 203	1 450	745	147	1 463	63	1 393	37
Same State	1 142	1 113	29	—	732	621	111	102	270	—	270	—
Different State	2 366	2 231	105	100	1 471	829	634	45	1 193	63	1 123	37
Northeast	145	145	—	—	112	112	—	—	22	—	22	—
North Central	1 134	1 070	48	43	602	316	286	22	373	37	336	18
South	516	458	49	17	511	210	293	16	689	—	689	19
West	571	558	8	40	246	191	55	7	109	26	76	18
Moved, residence not rptd., abroad	3 461	2 902	525	272	3 378	1 990	1 362	59	3 901	317	3 579	51
SCHOOL ENROLLMENT												
All income levels												
Total enrolled, 3 to 21 yr. old	3 744	3 183	531	875	5 530	2 701	2 815	148	6 827	140	6 687	125
Nursery school:												
Public	101	85	16	41	92	43	49	6	63	—	63	—
Private	32	32	—	18	31	31	—	—	18	—	18	—
Kindergarten:												
Public	236	195	41	78	357	207	150	—	384	—	384	—
Private	19	19	—	19	21	6	15	6	15	—	15	—
Elem. (1 to 8 yr.):												
Public	2 191	1 779	393	336	3 536	1 479	2 043	88	4 155	49	4 106	58
Private	304	304	—	178	164	127	37	—	108	—	108	—
High school (1 to 4 yr.):												
Public	628	541	81	140	1 040	577	463	48	1 781	84	1 697	60
Private	146	141	—	58	122	89	33	—	88	—	88	—
College	87	87	—	7	167	142	25	—	215	7	208	7
Total enrolled, 3 to 21 yr. old	3 744	3 183	531	875	5 530	2 701	2 815	148	6 827	140	6 687	125
3 to 5 years old	285	225	60	89	342	190	152	6	351	—	351	—
6 to 13 years old	2 349	1 972	364	545	3 460	1 559	1 887	94	4 077	42	4 035	58
14 and 15 years old	552	488	58	136	846	411	435	36	1 062	33	1 029	18
16 and 17 years old	362	302	49	65	521	305	216	12	855	47	808	31
18 to 21 years old	196	196	—	40	361	236	125	—	482	18	464	18

Table A-2. Characteristics of the Population by Residence in Census Tracts With a Poverty Rate of 20 Percent or More: 1970—Continued

(Excludes inmates of institutions, members of Armed Forces living in barracks, college students living in dormitories, and unrelated individuals under 14 years. Data based on 15 percent sample, see text. For minimum base for derived figures (percent, median, etc.) and meaning of symbols, see text)

Kansas City, Missouri	Neighborhood 01				Neighborhood 02				Neighborhood 03			
	All races	White	Negro	Persons of Spanish language	All races	White	Negro	Persons of Spanish language	All races	White	Negro	Persons of Spanish language
SCHOOL ENROLLMENT—Continued												
All Income Levels—Continued												
Percent enrolled, 3 to 21 yr. old	63.4	62.6	70.1	70.5	72.2	69.3	75.2	62.4	72.8	63.1	73.0	71.8
3 to 5 years old	31.6	30.6	35.9	34.6	27.4	29.7	24.9	...	27.9	...	28.4	...
6 to 13 years old	96.2	95.5	100.0	97.3	97.5	97.4	97.5	69.1	95.2	...	95.1	...
14 and 15 years old	88.9	87.6	...	100.0	94.3	93.0	95.6	...	93.0	...	92.8	...
16 and 17 years old	69.1	67.3	72.9	71.9	74.2	...	84.5	...	84.5	...
18 to 21 years old	13.8	15.3	...	19.3	29.0	29.8	27.6	...	28.5	...	28.7	...
Income Below Poverty Level												
Total enrolled, 3 to 21 yr. old	1 375	1 018	344	285	2 436	863	1 573	111	2 141	46	2 095	31
Nursery school:												
Public	43	27	16	15	62	21	41	—	38	46	38	—
Private	8	8	—	5	10	10	—	—	10	—	10	—
Kindergarten:												
Public	83	74	9	8	107	39	68	—	148	—	148	—
Private	—	—	—	—	5	—	5	—	—	—	—	—
Elem. (1 to 8 yr.):												
Public	912	611	288	136	1 718	539	1 179	77	1 414	15	1 399	—
Private	61	61	—	20	44	29	15	—	14	—	14	—
High school (1 to 4 yr.):												
Public	208	177	31	55	460	195	265	34	482	31	451	31
Private	32	32	—	16	9	9	—	—	17	—	17	—
College												
Total enrolled, 3 to 21 yr. old	1 375	1 018	344	285	2 436	863	1 573	111	2 141	46	2 095	31
3 to 5 years old	118	84	34	38	145	48	97	—	165	—	165	—
6 to 13 years old	906	632	261	171	1 668	572	1 096	77	1 372	15	1 357	—
14 and 15 years old	200	169	31	43	342	112	230	22	245	—	245	—
16 and 17 years old	73	55	18	21	199	93	106	12	257	20	237	20
18 to 21 years old	78	78	—	12	82	38	44	—	102	11	91	11
Percent enrolled, 3 to 21 yr. old	69.8	67.2	81.7	77.4	74.4	67.1	79.2	72.1	71.7	...	71.8	...
3 to 5 years old	39.6	35.7	27.1	22.0	30.5	...	34.7	...	35.0	...
6 to 13 years old	97.9	97.1	100.0	100.0	96.1	96.9	95.7	...	91.5	...	91.4	...
14 and 15 years old	92.6	91.4	92.7	...	92.0	...	92.8	...	92.8	...
16 and 17 years old	42.2	39.3	68.4	63.3	73.6	...	89.2	...	88.4	...
18 to 21 years old	21.8	25.6	24.0	17.9	22.4	...	21.2	...
YEARS OF SCHOOL COMPLETED												
All Income Levels												
Male, 25 years old and over												
Elementary: 0 to 7 years	6 963	6 326	554	557	5 689	3 733	1 928	115	6 947	340	6 587	73
8 years	1 775	1 581	172	266	1 658	1 028	623	20	1 859	47	1 806	6
High school: 1 to 3 years	1 196	1 107	81	36	981	674	307	14	1 050	84	966	10
4 years	1 412	1 280	120	133	1 314	884	423	34	1 468	89	1 379	8
College: 1 to 3 years	1 553	1 434	105	111	1 163	714	449	41	1 518	115	1 403	17
4 years or more	576	510	66	11	313	219	80	—	576	5	571	25
Median years of school completed	10.1	10.1	9.6	8.3	9.5	9.6	9.2	6	10.0	10.3	10.0	7
Female, 25 years old and over												
Elementary: 0 to 7 years	7 243	6 672	525	651	7 165	4 495	2 636	106	8 744	459	8 285	34
8 years	1 571	1 366	181	236	1 912	1 197	704	34	1 990	97	1 893	6
High school: 1 to 3 years	1 341	1 300	36	103	1 073	662	411	13	1 092	72	1 020	10
4 years	1 640	1 492	143	126	2 076	1 378	689	34	2 551	106	2 445	12
College: 1 to 3 years	1 935	1 784	139	169	1 528	932	588	12	2 043	109	1 934	16
4 years or more	489	463	26	10	358	208	150	13	666	61	605	—
Median years of school completed	10.3	10.3	10.0	8.9	9.9	9.8	9.9	...	10.5	10.7	10.5	...
Income Below Poverty Level												
Male, 25 years old and over												
Less than 8 years	1 558	1 383	153	123	1 347	740	600	30	1 437	92	1 345	21
8 to 11 years	540	453	72	75	529	220	309	13	560	24	536	—
12 years or more	608	539	62	22	592	408	177	17	542	45	497	10
Female, 25 years old and over												
Less than 8 years	1 979	1 749	205	125	2 390	1 296	1 094	33	2 570	176	2 394	—
8 to 11 years	622	511	98	76	837	516	321	6	933	60	873	—
12 years or more	858	776	82	33	1 100	577	523	22	1 055	71	984	—
PERSONS 16 TO 21 YEARS OLD NOT IN SCHOOL	499	462	25	16	453	203	250	5	582	45	537	—
All Income Levels												
Male												
Not high school graduate	513	448	50	42	480	284	196	15	574	34	540	37
Employed or in Armed Forces	290	267	23	30	326	170	156	15	270	6	264	—
Unemployed	230	217	13	30	202	129	73	—	146	6	140	—
Not in labor force	34	34	—	—	48	24	24	—	38	—	38	—
High school graduate	26	16	10	—	76	17	59	—	86	—	86	—
Employed or in Armed Forces	223	181	27	12	154	114	40	—	304	28	276	17
Unemployed	174	148	17	12	104	79	25	—	221	11	210	—
Not in labor force	22	12	10	—	8	—	8	—	45	17	28	17
Female												
Not high school graduate	869	785	69	142	597	390	207	24	938	30	908	10
Employed or in Armed Forces	423	362	51	44	322	240	82	18	381	23	358	10
Unemployed	196	173	13	24	130	93	37	5	182	8	174	—
Not in labor force	14	14	—	—	48	48	—	—	66	—	66	—
High school graduate	213	175	38	20	144	99	45	13	133	15	118	10
Employed or in Armed Forces	446	423	18	98	275	150	125	6	409	7	402	—
Unemployed	295	286	4	58	148	94	54	6	293	7	286	—
Not in labor force	11	11	—	—	—	—	—	—	18	—	18	—
Total	140	126	14	29	127	56	71	—	98	—	98	—

Table A-2. Characteristics of the Population by Residence in Census Tracts With a Poverty Rate of 20 Percent or More: 1970—Continued

[Excludes inmates of institutions, members of Armed Forces living in barracks, college students living in dormitories, and unrelated individuals under 14 years. Data based on 15-percent sample, see text. For minimum base for derived figures (percent, median, etc.) and meaning of symbols, see text.]

Kansas City, Missouri	Neighborhood 01				Neighborhood 02				Neighborhood 03			
	All races	White	Negro	Persons of Spanish language	All races	White	Negro	Persons of Spanish language	All races	White	Negro	Persons of Spanish language
PERSONS 16 TO 21 YEARS OLD NOT IN SCHOOL—Con.												
Income Below Poverty Level												
Male	157	133	15	—	122	94	28	7	125	8	117	8
Not high school graduate	133	118	15	—	82	61	21	7	83	—	83	—
Employed or in Armed Forces	88	83	5	—	68	56	12	7	31	—	31	—
Unemployed	22	22	—	—	5	5	—	—	—	—	—	—
Not in labor force	23	13	10	—	9	—	9	—	52	—	52	—
High school graduate	24	15	—	—	40	33	7	—	42	8	34	8
Employed or in Armed Forces	9	—	—	—	15	15	—	—	29	—	29	—
Unemployed	6	6	—	—	—	—	—	—	13	8	5	8
Not in labor force	9	9	—	—	25	18	7	—	—	—	—	—
Female	222	179	33	17	230	134	96	17	260	7	253	—
Not high school graduate	152	113	29	17	192	110	82	11	142	—	142	—
Employed or in Armed Forces	43	27	6	10	84	47	37	5	55	—	55	—
Unemployed	5	5	—	—	23	23	—	—	51	—	51	—
Not in labor force	104	81	23	7	85	40	45	6	36	—	36	—
High school graduate	70	66	4	—	38	24	14	6	118	7	111	—
Employed or in Armed Forces	49	45	4	—	17	17	—	6	83	7	76	—
Unemployed	—	—	—	—	—	—	—	—	9	—	9	—
Not in labor force	21	21	—	—	21	7	14	—	26	—	26	—
MARRIED COUPLES AND CHILDREN												
All Income Levels												
Married couples	3 342	3 051	248	469	3 620	2 601	1 011	88	4 347	194	4 139	58
With own household	3 303	3 018	242	457	3 565	2 567	990	88	4 243	194	4 035	58
Without own household	39	33	6	12	55	34	21	—	104	—	104	—
With own children under 18 yr	1 290	1 157	120	275	1 669	1 123	538	70	1 852	52	1 792	22
With own children under 6 yr	772	687	72	215	972	620	344	27	900	18	874	14
With husband under 45 years	1 552	1 371	168	277	1 734	1 167	559	63	1 701	54	1 639	34
With own children under 18 yr	1 017	892	112	226	1 202	763	431	56	1 135	21	1 106	17
Related child, under 18 yr	5 419	4 554	826	1 217	7 553	3 721	3 818	210	9 013	152	8 861	110
Living with both parents	3 323	2 964	342	848	3 915	2 592	1 309	198	4 850	90	4 760	80
Percent living with both parents	61.3	65.1	41.4	69.7	51.8	69.7	34.3	94.3	53.8	59.2	53.7	—
Living with mother only	1 680	1 205	453	293	3 377	983	2 394	12	3 155	19	3 136	19
Living with father only	143	143	—	32	162	117	45	—	407	23	384	11
Living with neither parent	273	242	31	44	99	29	70	—	601	20	581	—
Income Below Poverty Level												
Related child, under 18 yr	1 938	1 408	508	389	3 348	1 260	2 088	130	3 019	30	2 989	11
Living with both parents	758	617	141	194	965	617	348	118	817	—	817	—
Percent living with both parents	39.1	43.8	27.8	49.9	28.8	49.0	16.7	—	27.1	—	27.3	—
Living with mother only	1 042	670	350	185	2 306	595	1 711	12	1 778	19	1 759	—
Living with father only	58	58	—	—	43	43	—	—	169	11	158	11
Living with neither parent	80	63	17	10	34	5	29	—	255	—	255	—
FERTILITY BY AGE OF WOMAN												
All Income Levels												
Women ever married:												
15 to 24 years	834	747	75	89	811	553	258	18	855	54	801	28
25 to 34 years	853	719	130	147	1 004	517	487	36	1 063	44	1 019	6
35 to 44 years	831	747	74	94	1 078	669	409	18	1 376	55	1 321	12
Children ever born per 1,000 women ever married:												
15 to 24 years	1 108	1 020	—	—	1 380	1 175	1 818	—	1 407	—	1 449	—
25 to 34 years	2 960	3 096	—	4 306	2 586	2 106	3 094	—	2 886	—	2 917	—
35 to 44 years	2 771	2 592	—	—	3 669	3 242	4 367	—	3 512	—	3 572	—
Income Below Poverty Level												
Women ever married:												
15 to 24 years	187	173	14	23	212	125	87	11	297	18	279	9
25 to 34 years	219	170	45	23	268	94	174	10	247	15	232	—
35 to 44 years	174	156	13	21	370	156	214	12	335	10	325	—
Children ever born per 1,000 women ever married:												
15 to 24 years	1 631	1 428	—	—	2 410	—	—	—	1 539	—	1 606	—
25 to 34 years	4 105	4 412	—	—	4 116	—	4 828	—	3 765	—	3 871	—
35 to 44 years	3 977	3 551	—	—	4 965	5 000	4 939	—	4 707	—	4 852	—

Table A-3. Employment Characteristics of the Population by Residence in Census Tracts With a Poverty Rate of 20 Percent or More: 1970

[Excludes inmates of institutions, members of Armed Forces living in barracks, college students living in dormitories, and unrelated individuals under 14 years. Data based on 15-percent sample, see text. For minimum base for derived figures (percent, median, etc.) and meaning of symbols, see text.]

Kansas City, Missouri	Neighborhood 01				Neighborhood 02				Neighborhood 03			
	All races	White	Negro	Persons of Spanish language	All races	White	Negro	Persons of Spanish language	All races	White	Negro	Persons of Spanish language
EMPLOYMENT STATUS												
All Income Levels												
Male												
Total, 16 years old and over												
Armed Forces	8 483	7 690	684	791	6 974	4 593	2 353	130	8 711	463	8 228	133
Civilian labor force	5 921	5 404	462	613	4 543	3 062	1 460	85	5 951	293	5 650	107
Employed	5 512	5 034	428	574	4 230	2 877	1 332	85	5 638	276	5 354	90
At work	5 397	4 932	415	574	4 120	2 806	1 293	85	5 252	251	4 993	77
Full time	4 400	4 015	335	503	3 253	2 193	1 046	59	4 266	196	4 070	66
With a job but not at work	115	102	13	—	110	71	39	—	386	25	361	13
Unemployed	409	370	34	39	313	185	128	—	313	17	296	17
Percent unemployed	6.9	6.8	7.4	6.4	6.9	6.0	8.8	—	5.3	5.8	5.2	—
Not in labor force	2 553	2 277	222	178	2 418	1 524	887	39	2 692	170	2 510	25
Enrolled in school	233	189	33	55	306	210	96	—	441	11	430	4
Other	2 320	2 088	189	123	2 112	1 314	791	39	2 251	159	2 080	21
65 years old and over	1 380	1 275	83	101	1 110	678	432	8	1 300	89	1 199	—
16 to 24 years old ¹												
Employed	1 520	1 364	130	234	1 285	860	425	15	1 764	123	1 641	59
Unemployed	1 082	998	75	160	864	639	225	15	873	95	778	38
Not in labor force	100	90	10	19	69	24	45	—	164	17	147	17
Percent unemployed	329	267	45	55	345	190	155	—	679	11	668	4
25 to 64 years old ¹												
Employed	5 174	4 671	442	413	4 303	2 882	1 393	101	5 202	227	4 967	73
Unemployed	4 046	3 668	337	371	3 119	2 094	1 004	64	4 340	157	4 175	52
Not in labor force	290	268	17	20	235	152	83	—	141	70	631	21
Family head, 25 to 64 years old ¹	838	735	88	22	943	636	300	31	701	70	631	—
Employed	2 468	2 265	175	333	2 731	1 938	785	73	3 318	127	3 183	51
Unemployed	2 103	1 936	154	305	2 166	1 556	602	60	2 976	102	2 866	41
Not in labor force	108	91	17	12	137	93	44	—	72	—	72	—
Percent unemployed	257	238	4	16	422	289	133	7	270	25	245	10
Female												
Total, 16 years old and over												
Armed Forces	8 869	8 131	665	870	8 785	5 486	3 265	142	10 760	543	10 205	69
Civilian labor force	4 091	3 742	312	422	3 848	2 251	1 574	48	5 497	174	5 311	32
Employed	3 914	3 590	287	395	3 651	2 139	1 489	48	5 121	170	4 939	26
At work	3 813	3 498	282	384	3 500	2 063	1 414	48	4 921	161	4 748	26
Full time	3 114	2 864	227	319	2 644	1 621	1 000	34	3 729	136	3 581	16
With a job but not at work	101	92	5	11	151	76	75	—	200	9	191	—
Unemployed	177	152	25	27	197	112	85	—	376	4	372	6
Percent unemployed	4.3	4.1	8.0	6.4	5.1	5.0	5.4	—	6.8	2.3	7.0	—
Not in labor force	4 778	4 389	353	448	4 937	3 235	1 691	94	5 263	369	4 894	37
Enrolled in school	225	181	44	25	429	253	176	—	573	16	557	9
Other	4 553	4 208	309	423	4 508	2 982	1 515	94	4 690	353	4 337	28
65 years old and over	1 978	1 905	73	84	1 843	1 281	555	20	1 935	193	1 742	—
With own children under 6 years old	1 071	894	156	228	1 514	782	732	27	1 553	35	1 518	13
Percent in civilian labor force	47.2	49.6	37.8	36.0	50.7	40.7	61.3	—	59.3	—	60.1	—
With own children 6 to 17 years old	1 207	1 046	147	263	2 007	1 066	941	62	2 294	39	2 255	18
Percent in civilian labor force	48.4	49.5	42.2	48.3	53.7	42.5	66.3	—	57.6	—	57.6	—
16 to 24 years old ¹												
Employed	1 626	1 459	140	219	1 620	991	629	36	2 016	84	1 925	35
Unemployed	897	828	54	123	752	447	305	23	975	38	930	16
Not in labor force	44	34	10	11	74	48	26	—	160	—	160	—
Percent unemployed	685	597	76	85	794	496	298	13	881	46	835	19
25 to 64 years old ¹												
Employed	4 877	4 412	419	567	5 055	3 042	1 986	86	6 349	243	6 101	34
Unemployed	2 670	2 439	209	272	2 675	1 555	1 097	25	3 705	109	3 591	10
Not in labor force	109	103	6	16	116	57	59	—	216	4	212	6
Family head, 25 to 64 years old ¹	2 098	1 870	204	279	2 264	1 430	830	61	2 428	130	2 298	18
Employed	696	544	137	93	1 158	479	666	19	1 233	7	1 226	—
Unemployed	430	332	94	63	753	283	457	9	758	—	758	—
Not in labor force	20	20	—	—	56	30	26	—	57	—	57	—
Wife of head, 25 to 64 years old ¹	246	192	43	30	349	166	183	10	418	7	411	—
Employed	2 225	2 066	138	351	2 426	1 761	665	59	3 011	108	2 898	28
Unemployed	901	857	36	113	1 067	738	329	16	1 546	53	1 488	10
Not in labor force	67	61	6	16	30	19	11	—	54	—	54	—
Percent unemployed	1 257	1 148	96	222	1 329	1 004	325	43	1 411	55	1 356	18
Income Below Poverty Level												
Male												
Total, 16 years old and over												
Armed Forces	1 937	1 730	176	172	1 638	920	711	37	1 832	161	1 665	51
Civilian labor force	—	—	—	—	—	—	—	—	—	—	—	—
Employed	792	742	41	118	622	384	238	29	782	69	713	30
At work	694	652	33	98	579	366	213	29	721	61	660	22
Full time	681	639	33	98	560	366	194	29	667	61	606	22
Unemployed	497	462	26	68	346	217	129	9	501	50	451	11
Percent unemployed	98	90	8	20	43	18	25	—	61	8	53	8
Not in labor force	12.4	12.1	—	—	6.9	4.7	10.5	—	7.8	—	7.4	—
Enrolled in school	1 145	988	135	54	1 016	536	473	8	1 037	92	939	21
Other	41	33	8	12	123	54	69	—	117	—	117	—
65 years old and over	1 104	955	127	42	893	482	404	8	920	92	822	21
Percent unemployed	661	583	56	36	449	212	237	8	546	45	495	—

¹Includes members of Armed Forces not living in barracks and not shown separately.

Table A-3. Employment Characteristics of the Population by Residence in Census Tracts With a Poverty Rate of 20 Percent or More: 1970—Continued

(Excludes inmates of institutions, members of Armed Forces living in barracks, college students living in dormitories, and unrelated individuals under 14 years. Data based on 15-percent sample, see text. For minimum base for derived figures (percent, median, etc.) and meaning of symbols, see text.)

Kansas City, Missouri	Neighborhood 01				Neighborhood 02				Neighborhood 03			
	All races	White	Negro	Persons of Spanish language	All races	White	Negro	Persons of Spanish language	All races	White	Negro	Persons of Spanish language
EMPLOYMENT STATUS—Continued												
Income Below Poverty Level—Con.												
Male—Continued												
16 to 24 years old ¹	379	347	23	49	291	180	111	7	395	69	326	30
Employed	232	218	5	32	167	125	42	7	174	61	113	22
Unemployed	58	58	—	5	5	5	—	—	30	8	22	8
Not in labor force	89	71	18	12	119	50	69	—	178	—	178	—
25 to 64 years old ¹	796	699	97	66	830	495	328	22	822	47	775	21
Employed	367	339	28	45	349	213	136	22	486	—	486	—
Unemployed	34	26	8	15	38	13	25	—	23	—	23	—
Not in labor force	395	334	61	6	443	269	167	—	313	47	266	21
Family head, 25 to 64 years old ¹	289	256	33	49	417	283	134	22	354	10	344	10
Employed	186	165	21	36	238	158	80	22	269	—	269	—
Unemployed	19	11	8	7	10	—	10	—	8	—	8	—
Not in labor force	84	80	4	6	169	125	44	—	77	10	67	10
Female												
Total, 16 years old and over	2 362	2 061	266	158	2 923	1 579	1 344	62	3 266	208	3 058	9
Civilian labor force	600	479	99	29	868	402	466	28	1 179	22	1 157	—
Employed	501	399	80	29	773	356	417	28	1 023	22	1 001	—
At work	471	378	75	29	710	333	377	28	954	22	932	—
Full time	374	308	53	29	479	212	267	23	617	22	595	—
With a job but not at work	30	21	5	—	63	23	40	—	69	—	69	—
Unemployed	99	80	19	—	95	46	49	—	156	—	156	—
Percent unemployed	16.5	16.7	...	—	10.9	11.4	10.5	—	13.2	—	13.5	—
Not in civilian labor force	1 762	1 582	167	129	2 055	1 177	878	34	2 087	186	1 901	9
Enrolled in school	62	31	31	—	150	72	78	—	233	16	217	9
Other	1 700	1 551	136	129	1 905	1 105	800	34	1 854	170	1 684	—
65 years old and over	839	811	28	36	924	638	286	6	862	120	742	—
With own children under 6 years old	331	250	77	62	562	230	332	—	529	9	520	—
Percent in civilian labor force	29.6	28.0	49.5	43.0	53.9	—	49.1	—	50.0	—
With own children 6 to 17 years old	350	262	79	63	743	280	463	32	616	7	609	—
Percent in civilian labor force	42.0	41.2	51.5	38.6	59.4	...	37.0	—	37.4	—
16 to 24 years old	383	312	61	33	533	283	250	29	696	32	664	9
Employed	161	131	20	15	219	138	81	23	253	14	239	—
Unemployed	24	14	10	—	41	23	18	—	108	—	108	—
Not in civilian labor force	198	167	31	18	273	122	151	6	335	18	317	9
25 to 64 years old	1 097	910	162	89	1 441	638	803	27	1 549	56	1 493	—
Employed	320	254	54	14	535	204	331	5	418	8	410	—
Unemployed	58	58	—	—	54	23	31	—	48	—	48	—
Not in civilian labor force	719	598	108	75	852	411	441	22	883	48	835	—
Family head, 25 to 64 years old	279	197	73	34	555	170	385	10	503	7	496	—
Employed	99	65	30	14	281	51	230	—	198	—	198	—
Unemployed	20	20	—	—	43	23	20	—	20	—	20	—
Not in civilian labor force	160	112	43	20	231	96	135	10	285	7	278	—
Wife of head, 25 to 64 years old	259	223	20	43	378	251	127	17	342	—	342	—
Employed	35	22	5	—	80	52	28	5	101	—	101	—
Unemployed	23	23	—	—	11	—	11	—	11	—	11	—
Not in civilian labor force	201	178	15	43	287	199	88	12	230	—	230	—
PLACE OF WORK												
All workers ²	9 278	8 495	700	977	7 770	4 973	2 753	151	10 310	419	9 871	103
Inside SMSA of residence	7 182	6 632	474	906	5 516	3 622	1 863	119	6 755	254	6 486	88
In county of residence	6 251	5 775	406	716	4 942	3 210	1 709	114	5 927	238	5 674	75
In central city	5 927	5 461	396	682	4 681	3 036	1 622	106	5 369	213	5 149	66
Outside county of residence	931	857	68	190	574	412	154	5	828	16	812	13
In central city	78	69	9	7	81	65	16	—	62	—	62	7
Outside SMSA of residence	107	107	—	28	91	91	—	—	101	—	101	—
Workers below poverty level ²	1 159	1 024	108	127	1 308	722	586	69	1 658	83	1 575	22
Inside SMSA of residence	818	734	57	127	846	474	372	37	906	56	850	11
In county of residence	767	683	57	107	778	431	347	37	784	56	728	11
In central city	696	612	57	107	772	431	341	37	693	40	653	11
Outside county of residence	51	51	—	20	68	43	25	—	122	—	122	—
In central city	—	—	—	—	—	—	—	—	4	—	4	—
Outside SMSA of residence	27	27	—	—	5	5	—	—	23	—	23	—
MEANS OF TRANSPORTATION TO WORK												
All workers	9 278	8 495	700	977	7 770	4 973	2 753	151	10 310	419	9 871	103
Private automobile, driver	3 819	3 568	237	408	3 750	2 699	1 033	98	5 111	157	4 946	26
Private automobile, passenger	1 204	1 132	72	224	1 122	745	361	23	1 493	41	1 452	38
Bus, streetcar, or subway	1 581	1 334	216	162	1 643	794	845	24	2 795	141	2 654	39
Walked only	2 007	1 886	88	136	827	469	352	6	460	52	396	—
Worked at home	359	311	43	20	252	146	106	—	249	14	235	—
Other means	308	264	44	27	176	120	56	—	202	14	188	—
Workers below poverty level	1 159	1 024	108	127	1 308	722	586	69	1 658	83	1 575	22
Private automobile, driver	280	264	16	40	342	235	107	41	529	22	507	—
Private automobile, passenger	115	115	—	12	171	114	57	23	282	—	282	—
Bus, streetcar, or subway	261	196	65	10	375	152	223	5	614	38	576	22
Walked only	380	338	20	46	277	159	118	—	116	18	98	—
Worked at home	86	74	7	10	83	22	61	—	79	5	74	—
Other means	37	37	—	9	60	40	20	—	38	—	38	—

¹Includes members of Armed Forces not living in barracks and not shown separately.

²Includes "Place of work not reported" not shown separately.

Table A-4. Selected Occupations of Employed Persons by Residence in Census Tracts With a Poverty Rate of 20 Percent or More: 1970

[Excludes inmates of institutions, members of Armed Forces living in barracks, college students living in dormitories, and unrelated individuals under 14 years. Data based on 15 percent sample, see text. For minimum base for derived figures (percent, median, etc.) and meaning of symbols, see text]

Kansas City, Missouri

	Neighborhood 01				Neighborhood 02				Neighborhood 03			
	All races	White	Negro	Persons of Spanish language	All races	White	Negro	Persons of Spanish language	All races	White	Negro	Persons of Spanish language
ALL INCOME LEVELS												
Total employed, 16 yr. & over¹	9 426	8 624	715	969	7 881	5 016	2 821	133	10 759	446	10 293	116
Prof., tech., and kindred workers	904	884	20	48	642	376	254	13	838	44	787	9
Health workers, except practitioners	115	110	5	14	159	103	56	6	167	—	167	—
Teachers, elem. and secondary	71	71	—	6	116	54	62	—	179	—	179	—
Managers and admin., exc. farm	638	618	20	27	355	294	57	—	253	8	245	—
Self-employed	97	91	6	5	41	30	11	—	69	—	69	—
Sales workers	410	404	6	15	294	251	43	—	291	29	262	—
Retail trade	226	226	—	15	249	229	20	—	192	29	163	—
Clerical and kindred workers	2 155	2 075	73	174	1 367	904	463	25	272	90	1 673	33
Postal clerks and mail carriers	94	80	7	7	92	24	68	—	106	22	84	—
Shipping, receiving, and stock clerks	180	161	19	21	124	105	19	—	55	4	51	—
Bkkprs., cashiers, & bank tellers	337	331	6	7	96	75	21	—	711	77	626	12
Craftsmen and kindred workers	1 002	942	46	115	880	710	170	9	108	4	104	4
Construction craftsmen	170	163	7	20	89	74	15	—	132	—	132	—
Mechanics and repairmen	116	116	—	19	160	128	32	—	132	—	132	—
Operatives, except transport	1 360	1 281	51	279	1 516	1 004	491	18	1 326	83	1 243	11
Assemblers	138	127	11	13	72	68	56	—	153	—	153	—
Checkers, exam., & inspectors, mfg	45	45	—	42	127	50	22	8	43	—	43	—
Pkrs. & wrappers, inc. meat & prod.	140	134	—	24	110	107	20	—	71	8	63	—
Sewers, stitchers, & textile oper	84	80	—	24	110	110	—	—	41	6	35	—
Transport equipment operatives	398	359	39	41	364	282	82	14	359	—	359	—
Truck drivers	111	111	—	4	188	155	33	5	114	—	114	—
Laborers, except farm	719	598	112	114	679	381	298	19	1 312	47	1 265	14
Construction	62	56	6	8	128	72	56	—	227	—	227	—
Freight, material, and stock handlers	243	195	39	59	215	161	54	6	332	9	323	9
Service workers, exc. private hshld. ²	1 726	1 396	301	146	1 607	796	804	26	2 785	62	2 718	37
Cleaning service workers	272	231	41	58	382	146	236	—	760	15	740	13
Food service workers	505	465	35	38	295	209	86	—	406	26	380	18
Health service workers	157	104	48	38	118	73	45	—	253	5	248	—
Personal service workers	227	187	21	12	182	101	81	—	283	7	276	—
Protective service workers	29	22	7	10	79	37	42	13	64	—	64	—
Private household workers	108	61	47	10	163	12	151	5	1 011	6	1 005	—
Female employed, 16 yr. & over¹	3 914	3 590	287	395	3 651	2 139	1 489	48	5 121	170	4 939	28
Prof., tech., and kindred workers	397	392	5	20	398	208	184	—	504	34	463	9
Health workers, except practitioners	115	110	5	14	123	75	48	—	150	—	150	—
Teachers, elem. and secondary	57	57	—	6	92	42	50	—	158	—	158	—
Managers and admin., exc. farm	230	219	11	15	150	102	44	—	61	—	61	—
Self-employed	36	30	6	5	12	6	6	—	25	—	25	—
Sales workers	132	132	—	9	145	145	—	—	133	19	114	—
Retail trade	76	76	—	9	128	128	—	—	109	19	90	—
Clerical and kindred workers	1 505	1 472	33	107	980	646	334	18	1 182	56	1 126	11
Bkkprs., cashiers, & bank tellers	252	252	—	21	66	59	7	—	47	4	43	—
Secretaries, stenog., & typists	340	325	15	19	229	167	62	6	176	7	169	7
Craftsmen and kindred workers	107	93	14	14	99	87	12	—	69	—	69	—
Operatives, except transport	511	479	10	114	696	478	205	5	510	21	489	—
Laundry & dry cleaning operatives ³	47	36	6	14	92	15	73	—	114	8	106	—
Assemblers	40	36	4	6	87	36	51	—	84	—	84	—
Pkrs. & wrappers, inc. meat & prod.	82	82	—	36	70	70	—	—	39	8	31	—
Sewers, stitchers, & textile oper	68	64	—	17	104	104	—	—	35	—	35	—
Transport equipment operatives	9	9	—	—	16	—	—	—	—	—	—	—
Laborers, except farm	29	29	—	—	59	41	16	5	—	—	—	—
Service workers, exc. private hshld.	886	704	167	101	945	420	18	—	87	10	77	—
Cleaning service workers	63	52	11	27	192	60	525	6	1 564	24	1 535	6
Food service workers	260	249	6	33	174	130	44	—	290	8	277	6
Health service workers	133	88	40	29	111	66	45	—	230	—	230	—
Personal service workers	114	94	15	12	116	62	54	—	201	—	201	—
Private household workers	108	61	47	10	163	12	151	5	186	7	179	—
INCOME BELOW POVERTY LEVEL												
Total employed, 16 yr. & over¹	1 195	1 051	113	127	1 352	722	630	57	1 744	83	1 661	22
Prof., tech., and kindred workers	42	42	—	11	60	19	41	—	90	—	83	—
Managers and admin., exc. farm	37	37	—	6	33	17	16	—	31	—	31	—
Sales workers	31	31	—	6	44	44	—	—	27	—	27	—
Clerical and kindred workers	139	139	—	17	176	113	63	19	180	7	173	—
Craftsmen and kindred workers	94	89	5	5	50	33	17	—	79	—	79	—
Operatives, except transport	162	144	6	18	233	153	80	10	198	20	178	11
Transport equipment operatives	57	57	—	11	74	46	28	5	13	—	13	—
Laborers, except farm	122	113	—	18	157	86	71	13	174	25	149	—
Service workers, exc. private hshld	477	365	102	31	448	211	237	6	536	24	512	11
Private household workers	34	34	—	10	69	—	69	—	367	—	367	—
Female employed, 16 yr. & over¹	501	399	80	29	773	356	417	28	1 023	22	1 001	—
Prof., tech., and kindred workers	8	8	—	—	46	13	33	—	62	7	55	—
Managers and admin., exc. farm	16	16	—	—	18	10	8	—	15	—	15	—
Sales workers	16	16	—	—	44	44	—	—	14	—	14	—
Clerical and kindred workers	86	86	—	—	122	80	42	12	149	7	142	—
Craftsmen and kindred workers	13	13	—	—	—	—	—	—	—	—	—	—
Operatives, except transport	66	48	6	5	133	76	57	5	98	—	98	—
Transport equipment operatives	—	—	—	—	5	—	5	—	—	—	—	—
Laborers, except farm	12	12	—	—	18	—	18	—	—	—	—	—
Service workers, exc. private hshld	250	166	74	14	318	133	185	6	—	—	—	—
Private household workers	34	34	—	10	69	—	69	—	320	8	312	—

¹Includes "farm workers" not shown separately. included in total but not in distribution.

²Allocated cases included in total but not in distribution.

³Includes "clothing ironers and pressers."

⁴"Protective service workers" and allocated cases

Table A-5. Income Characteristics in 1969 of Families and Unrelated Individuals by Residence in Census Tracts With a Poverty Rate of 20 Percent or More: 1970

Excludes inmates of institutions, members of Armed Forces living in barracks, college students living in dormitories, and unrelated individuals under 14 years. Data based on 15-percent sample, see text. For minimum base for derived figures (percent, median, etc.) and meaning of symbols, see text)

Kansas City, Missouri	Neighborhood 01				Neighborhood 02				Neighborhood 03			
	All races	White	Negro	Persons of Spanish language	All races	White	Negro	Persons of Spanish language	All races	White	Negro	Persons of Spanish language
INCOME OF FAMILIES AND UNRELATED INDIVIDUALS												
All families	4 581	4 108	415	603	5 313	3 389	1 903	107	6 315	255	6 046	68
Less than \$2,000	534	445	77	64	788	445	343	17	752	49	703	10
\$2,000 to \$3,999	780	649	119	77	1 002	579	423	9	1 027	30	997	8
\$4,000 to \$5,999	910	801	101	99	932	548	367	33	1 131	44	1 073	—
\$6,000 to \$7,999	752	676	63	129	804	502	302	21	1 096	19	1 077	8
\$8,000 to \$9,999	622	564	45	90	591	455	136	9	796	29	767	15
\$10,000 to \$11,999	327	322	5	56	460	355	105	13	512	21	491	10
\$12,000 to \$14,999	346	346	—	56	351	223	128	—	464	36	428	9
\$15,000 to \$19,999	179	179	—	11	298	195	99	5	349	21	328	8
\$20,000 to \$24,999	85	80	5	11	42	42	—	—	98	6	92	—
\$25,000 or more	46	46	—	10	45	45	—	—	90	—	90	—
Median family income	\$6 177	\$6 470	\$4 228	\$6 953	\$5 859	\$6 488	\$5 011	...	\$6 452	\$6 474	\$6 464	...
Mean family income	\$7 151	\$7 445	\$4 569	\$7 471	\$6 842	\$7 384	\$5 872	...	\$7 428	\$7 411	\$7 433	...
Families with female head	971	804	152	121	1 495	669	813	19	1 773	43	1 730	—
Less than \$1,000	112	76	31	—	166	65	101	10	215	20	195	—
\$1,000 to \$1,999	106	88	18	22	280	125	155	—	195	9	186	—
\$2,000 to \$2,999	110	92	18	19	182	45	137	—	198	14	184	—
\$3,000 to \$3,999	136	105	27	7	227	131	96	—	266	—	266	—
\$4,000 to \$5,999	246	216	30	31	239	62	168	—	349	—	349	—
\$6,000 to \$7,999	138	115	17	42	166	89	77	9	245	—	245	—
\$8,000 to \$9,999	58	52	6	—	67	61	6	—	109	—	109	—
\$10,000 to \$14,999	56	51	5	—	132	91	41	—	143	—	143	—
\$15,000 and over	9	9	—	—	36	—	32	—	53	—	53	—
Median family income	\$4 175	\$4 380	\$3 333	...	\$3 526	\$3 760	\$3 141	...	\$4 072	...	\$4 195	...
Mean family income	\$4 908	\$5 188	\$3 589	...	\$4 475	\$4 989	\$3 992	...	\$4 876	...	\$4 965	...
All unrelated individuals	7 331	6 801	476	198	4 325	2 662	1 637	56	4 951	442	4 496	18
Less than \$1,000	1 237	1 108	115	38	1 013	578	428	8	1 261	110	1 145	—
\$1,000 to \$1,999	1 542	1 430	100	48	1 146	624	522	14	1 196	123	1 073	11
\$2,000 to \$2,999	1 002	922	73	15	688	463	218	7	562	42	520	—
\$3,000 to \$3,999	797	713	63	14	404	297	107	—	658	38	620	—
\$4,000 to \$5,999	1 288	1 225	63	45	513	323	184	21	716	33	676	7
\$6,000 to \$7,999	697	661	36	24	309	223	80	—	348	44	304	—
\$8,000 to \$9,999	354	328	26	14	164	72	92	—	154	15	139	—
\$10,000 to \$14,999	291	291	—	—	52	52	—	6	49	30	19	—
\$15,000 and over	123	123	—	—	36	30	6	—	7	7	—	—
Median income	\$2 885	\$2 935	\$2 315	\$2 867	\$2 005	\$2 279	\$1 748	...	\$2 033	\$1 902	\$2 058	...
Mean income	\$3 730	\$3 809	\$2 806	\$3 376	\$3 003	\$3 267	\$2 566	...	\$2 723	\$3 325	\$2 665	...
TYPE OF INCOME FOR FAMILIES AND UNRELATED INDIVIDUALS												
All families	4 581	4 108	415	603	5 313	3 389	1 903	107	6 315	255	6 046	68
With earnings	4 016	3 617	354	538	4 506	2 893	1 592	100	5 561	172	5 381	68
Mean earnings	\$7 225	\$7 480	\$4 832	\$7 833	\$6 939	\$7 467	\$5 990	...	\$7 575	\$9 567	\$7 514	...
Percent below poverty level	13.6	12.6	22.3	13.9	18.7	14.1	27.4	...	17.8	14.5	17.9	...
Head 65 years and over	477	455	15	50	467	310	157	—	751	8	743	—
Mean earnings	\$5 785	\$5 835	\$4 783	\$4 840	\$4 670	—	\$4 425	...	\$4 377	—
With Social Security income	1 175	1 101	59	84	1 257	908	345	16	1 745	90	1 649	—
Mean Social Security income	\$1 500	\$1 522	\$1 608	\$1 686	\$1 406	...	\$1 483	...	\$1 476	—
Percent below poverty level	21.5	19.7	26.3	23.8	33.3	...	22.9	...	21.4	...
Head 65 years and over	703	660	28	67	759	556	203	—	1 059	74	979	—
Mean Social Security income	\$1 753	\$1 798	\$1 798	\$1 827	\$1 719	...	\$1 652	...	\$1 639	...
With public assistance income	490	377	113	33	761	310	451	10	736	30	706	—
Mean public assistance income	\$873	\$915	\$1 032	\$887	\$1 131	...	\$1 035	...	\$1 050	...
Percent below poverty level	51.4	49.9	58.0	51.9	62.1	...	48.0	...	50.0	...
Head 65 years and over	59	45	14	2	92	58	34	—	134	15	119	—
Mean public assistance income	\$758
With other income	1 171	1 078	79	121	1 343	990	349	32	1 136	71	1 059	9
Mean other income	\$1 325	\$1 400	\$1 695	\$1 631	\$1 845	...	\$1 264	...	\$1 262	...
Percent below poverty level	14.3	11.5	14.4	11.1	23.8	...	13.6	...	13.1	...
Head 65 years and over	359	352	7	24	404	329	75	—	471	34	431	—
Mean other income	\$1 626	\$1 623	\$1 463	\$1 554	\$1 141	...	\$1 070	...
Families with female head	971	804	152	121	1 495	669	813	19	1 773	43	1 730	—
With earnings	767	641	116	102	1 142	492	637	19	1 501	7	1 494	—
Mean earnings	\$4 800	\$4 966	\$4 548	\$5 196	\$4 008	...	\$4 686	...	\$4 707	...
Percent below poverty level	24.4	21.5	36.6	24.2	46.9	...	32.8	...	32.5	...
Head 65 years and over	91	91	—	2	93	70	23	—	259	—	259	—
Mean earnings	\$4 699	...	\$4 699	...
With Social Security income	244	249	15	17	395	264	127	9	624	36	588	—
Mean Social Security income	\$1 288	\$1 307	\$1 379	\$1 597	\$1 189	...	\$1 214	...
Percent below poverty level	18.2	16.5	35.2	23.9	30.6	...	27.7	...
Head 65 years and over	149	149	—	7	161	104	57	—	319	27	292	—
Mean Social Security income	\$1 548	\$1 548	\$1 330	\$1 039	...	\$1 058	...
With public assistance income	255	183	72	27	521	196	325	10	458	8	450	—
Mean public assistance income	\$1 117	\$1 223	\$1 115	\$958	\$1 210	...	\$1 171	...	\$1 175	...
Percent below poverty level	62.0	61.2	65.8	56.1	71.7	...	61.8	...	62.9	...
Head 65 years and over	10	10	—	2	46	29	17	—	47	8	39	—
Mean public assistance income
With other income	303	263	40	18	325	200	121	9	348	23	325	—
Mean other income	\$1 514	\$1 668	\$1 141	\$858	\$955	...	\$971	...
Percent below poverty level	27.4	19.4	41.2	38.0	27.9	...	25.2	...
Head 65 years and over	93	93	—	—	50	39	11	—	122	14	108	—
Mean other income

Table A-5. Income Characteristics in 1969 of Families and Unrelated Individuals by Residence in Census Tracts With a Poverty Rate of 20 Percent or More: 1970—Continued

[Excludes inmates of institutions, members of Armed Forces living in barracks, college students living in dormitories, and unrelated individuals under 14 years. Data based on a 10 percent sample, see text. For minimum base for derived figures (percent, median, etc.) and meaning of symbols, see text]

Kansas City, Missouri

TYPE OF INCOME FOR FAMILIES AND UNRELATED INDIVIDUALS—Continued

All unrelated individuals
 With earnings
 Mean earnings
 Percent below poverty level
 65 years and over
 Mean earnings
 Percent below poverty level
 With Social Security income
 Mean Social Security income
 Percent below poverty level
 65 years and over
 Mean Social Security income
 With public assistance income
 Mean public assistance income
 Percent below poverty level
 65 years old and over
 Mean public assistance income
 With other income
 Mean other income
 Percent below poverty level
 65 years old and over
 Mean other income

WEEKS WORKED

All Income Levels

Male family heads
 Worked in 1969
 50 to 52 weeks
 40 to 49 weeks
 27 to 39 weeks
 26 weeks or less
 Did not work in 1969

Female family heads
 Worked in 1969
 50 to 52 weeks
 40 to 49 weeks
 27 to 39 weeks
 26 weeks or less
 Did not work in 1969

Income Below Poverty Level

Male family heads
 Worked in 1969
 50 to 52 weeks
 Did not work in 1969

Female family heads
 Worked in 1969
 50 to 52 weeks
 Did not work in 1969

FAMILIES BY NUMBER OF EARNERS

No earners
 Mean family income
 Percent below poverty level
 1 earner
 Mean family income
 Percent below poverty level
 2 earners
 Mean family income
 Percent below poverty level
 3 or more earners
 Mean family income
 Percent below poverty level

SIZE OF FAMILY

2 persons
 Mean family income
 Percent below poverty level
 3 persons
 Mean family income
 Percent below poverty level
 4 persons
 Mean family income
 Percent below poverty level
 5 and 6 persons
 Mean family income
 Percent below poverty level
 7 persons or more
 Mean family income
 Percent below poverty level

	Neighborhood 01				Neighborhood 02				Neighborhood 03			
	All races	White	Negro	Persons of Spanish language	All races	White	Negro	Persons of Spanish language	All races	White	Negro	Persons of Spanish language
7 331	6 801	476	198	4 325	2 662	1 637	56	4 951	442	4 496	18	
4 573	4 283	252	131	2 134	1 313	802	34	2 955	191	2 757	7	
\$4 678	\$4 731	\$4 096	...	\$4 087	\$4 279	\$3 758	...	\$3 471	\$5 042	\$3 360	...	
16.2	16.5	10.7	...	21.3	17.6	27.9	...	26.9	24.1	27.2	...	
604	565	39	24	365	220	145	6	543	36	507	...	
\$2 704	\$2 722	\$4 160	\$5 241	\$2 520	...	\$2 300	...	\$2 279	...	
19.4	19.6	16.7	2.7	37.9	...	30.0	...	32.1	...	
2 423	2 256	160	60	1 819	1 174	645	21	1 744	190	1 554	18	
\$1 102	\$1 113	\$958	...	\$1 161	\$1 168	\$1 149	...	\$1 045	\$1 022	\$1 048	...	
50.9	49.8	64.4	...	54.6	51.4	60.5	...	57.5	55.8	57.7	...	
1 940	1 848	85	43	1 515	1 025	490	6	1 214	145	1 069	...	
\$1 116	\$1 119	\$1 174	\$1 183	\$1 157	...	\$1 059	\$976	\$1 078	...	
610	516	87	12	690	375	315	23	527	92	435	...	
\$784	\$814	\$699	\$704	\$693	...	\$722	...	\$704	...	
64.1	61.0	75.1	69.1	82.2	...	73.6	...	71.7	...	
393	357	29	12	427	264	163	8	338	47	291	...	
\$803	\$823	\$640	\$669	\$594	...	\$742	...	\$725	...	
2 122	2 043	79	59	1 005	757	248	14	918	156	755	...	
\$1 321	\$1 326	\$1 662	\$1 907	\$915	...	\$1 112	\$1 527	\$1 036	...	
20.5	20.1	32.1	28.9	41.9	...	34.5	46.2	32.5	...	
1 038	1 017	21	27	543	432	111	14	445	67	378	...	
\$1 611	\$1 609	\$2 072	\$2 313	\$1 428	...	\$1 274	...	
3 610	3 304	263	482	3 818	2 720	1 090	88	4 542	212	4 316	48	
3 006	2 748	231	406	3 029	2 199	822	81	3 745	158	3 579	68	
1 841	1 689	139	272	1 832	1 327	497	63	2 648	107	2 533	42	
588	504	77	112	631	446	185	18	677	6	671	...	
243	237	6	16	264	175	89	...	174	25	149	18	
334	318	9	6	302	251	51	...	246	20	226	8	
604	556	32	76	789	521	268	7	797	54	737	...	
971	804	152	121	1 495	669	813	19	1 773	43	1 730	...	
606	504	98	88	957	376	568	19	1 163	16	1 147	...	
333	290	43	49	482	207	262	...	582	...	582	...	
132	88	40	23	228	67	161	9	232	...	232	...	
65	65	15	16	64	39	25	...	88	...	88	...	
76	61	15	16	183	63	120	10	261	16	245	...	
365	300	54	33	538	293	245	...	610	27	583	...	
558	491	52	85	634	435	199	29	694	36	658	18	
330	289	34	53	371	246	125	29	421	18	403	18	
69	56	13	6	115	47	68	18	222	...	222	...	
228	202	18	32	263	189	74	...	273	18	255	...	
338	248	81	41	721	258	463	10	725	35	690	...	
163	126	33	14	372	87	285	10	402	16	386	...	
14	14	124	18	106	...	139	...	139	...	
175	122	48	27	349	171	178	...	323	19	304	...	
565	491	61	65	807	496	311	7	754	83	665	...	
\$2 444	\$2 675	\$2 188	\$2 233	\$2 118	...	\$2 356	...	\$2 302	...	
61.9	57.6	63.3	57.7	72.3	...	57.0	...	57.7	...	
2 002	1 767	216	260	2 146	1 339	798	37	2 297	73	2 216	35	
\$5 767	\$5 906	\$4 626	\$5 740	\$5 395	\$6 032	\$4 331	...	\$5 291	...	\$5 259	...	
17.6	16.2	28.7	18.5	27.2	19.7	40.0	...	29.0	...	29.0	...	
1 685	1 573	92	181	1 898	1 288	598	50	2 363	80	2 283	16	
\$8 885	\$9 175	...	\$8 102	\$9 354	\$9 772	\$8 462	...	\$9 050	...	\$8 984	...	
10.4	9.9	...	14.9	10.5	8.9	14.2	...	11.5	...	11.9	...	
329	277	46	97	462	266	196	13	901	19	882	17	
\$14 780	\$15 897	\$11 371	\$12 230	\$10 205	...	\$12 868	...	\$12 751	...	
5.8	5.1	13.2	10.5	16.8	...	5.5	...	5.7	...	
2 384	2 215	134	192	2 275	1 631	635	37	2 554	148	2 400	25	
\$6 605	\$6 815	\$3 978	\$5 236	\$6 241	\$6 697	\$5 088	...	\$5 715	\$5 703	\$5 718	...	
17.0	16.0	23.9	21.9	18.3	15.8	25.2	...	20.2	36.5	19.3	...	
735	593	136	53	1 077	711	354	25	1 312	80	1 232	15	
\$7 179	\$7 829	\$4 389	...	\$7 066	\$7 567	\$5 998	...	\$7 594	...	\$7 500	...	
9.0	6.4	20.6	...	20.5	19.8	22.6	...	20.4	...	20.4	...	
517	460	57	67	750	452	298	23	770	...	770	9	
\$7 017	\$7 167	\$7 418	\$8 108	\$6 371	...	\$8 100	...	\$8 123	...	
26.7	27.0	32.3	30.3	35.2	...	23.5	...	23.8	...	
621	566	44	184	751	428	323	9	924	19	905	11	
\$8 029	\$8 251	...	\$8 037	\$8 118	\$9 271	\$6 591	...	\$8 948	...	\$8 930	...	
22.4	19.6	28.0	16.6	43.0	...	28.1	...	28.7	...	
324	274	44	107	460	167	293	13	747	8	739	8	
\$9 636	\$10 508	\$6 266	\$6 518	\$6 122	...	\$10 414	...	\$10 342	...	
45.4	40.9	57.6	52.1	60.8	...	25.7	...	26.0	...	

Table A-6. Persons by Family Status and Age and Families by Income Deficit by Residence in Census Tracts With a Poverty Rate of 20 Percent or More: 1970

(Excludes inmates of institutions, members of Armed Forces living in barracks, college students living in dormitories, and unrelated individuals under 14 years. Data based on 15-percent sample, see text. For minimum base for derived figures (percent, median, etc.) and meaning of symbols, see text)

	Neighborhood 01				Neighborhood 02				Neighborhood 03			
	All races	White	Negro	Persons of Spanish language	All races	White	Negro	Persons of Spanish language	All races	White	Negro	Persons of Spanish language
Kansas City, Missouri												
ALL INCOME LEVELS												
All Persons												
Total	22 363	20 037	2 116	2 820	22 689	13 436	9 177	470	27 589	1 116	26 441	289
In families	15 032	13 236	1 640	2 622	18 364	10 774	7 540	414	22 638	674	21 945	271
Head	4 581	4 108	415	603	5 313	3 389	1 903	107	6 315	255	6 046	68
With related children under 18	2 131	1 848	261	375	2 877	1 610	1 259	80	3 366	98	3 260	38
Mean number of related children under 18	2.48	2.48	2.44	3.39	2.64	2.25	3.14	...	2.75	...	2.79	...
With related children under 6	1 229	1 059	153	269	1 615	837	770	27	1 756	27	1 721	14
14 to 24 years	598	531	67	86	516	354	162	15	502	39	463	17
25 to 54 years	2 440	2 134	276	353	3 190	1 880	1 289	76	3 338	108	3 222	37
55 to 64 years	724	675	36	73	699	537	162	16	1 213	26	1 187	14
65 years and over	819	768	36	91	908	618	290	...	1 262	82	1 174	...
Wife of head	3 288	3 030	225	451	3 467	2 505	962	83	4 152	199	3 948	56
14 to 24 years	599	525	62	65	618	448	170	18	473	45	428	28
25 to 54 years	1 643	1 502	128	278	1 873	1 321	552	59	2 307	87	2 220	16
55 to 64 years	582	564	10	73	553	440	113	...	704	21	678	12
65 years and over	464	439	25	35	423	296	127	6	668	46	622	...
Other family members	7 163	6 098	1 000	1 568	9 584	4 880	4 675	224	12 171	220	11 951	147
Under 3 years	1 047	860	178	206	1 233	675	558	12	1 436	17	1 419	7
3 to 5 years	902	735	167	257	1 250	640	610	14	1 256	18	1 238	5
6 to 13 years	2 441	2 064	364	560	3 550	1 600	1 936	136	4 284	42	4 242	58
14 to 17 years	1 029	895	117	194	1 520	806	714	48	2 037	75	1 962	40
18 to 21 years	496	456	29	138	691	358	333	6	1 034	18	1 016	18
22 to 54 years	796	665	121	174	869	537	324	...	1 533	19	1 514	19
55 to 64 years	127	117	5	12	144	78	66	...	200	...	200	...
65 years and over	325	306	19	27	327	186	134	8	391	31	360	...
Mean size of family	3.28	3.22	3.95	4.35	3.46	3.18	3.96	...	3.58	2.64	3.63	...
Unrelated individuals	7 331	6 801	476	198	4 325	2 662	1 637	56	4 951	442	4 496	18
14 to 24 years	865	811	35	33	243	188	55	...	369	63	299	...
25 to 54 years	2 469	2 293	176	49	1 375	840	509	28	1 870	148	1 722	11
55 to 64 years	1 450	1 295	127	41	869	430	439	8	893	61	832	7
65 years and over	2 547	2 402	138	75	1 838	1 204	634	20	1 819	170	1 643	...
Persons in Families With Female Head and Female Unrelated Individuals												
Total	6 686	5 718	911	557	8 207	3 561	4 612	53	9 320	332	8 981	...
In families	3 288	2 512	729	476	5 859	2 085	3 746	39	6 607	87	6 520	...
Head	971	804	152	121	1 495	669	813	19	1 773	43	1 730	...
With related children under 18	621	478	134	70	1 109	416	693	10	1 199	16	1 183	...
Mean number of related children under 18	2.55	2.45	2.88	...	3.03	2.18	3.54	...	2.73	...	2.75	...
With related children under 6	320	235	81	30	580	172	408	...	683	9	674	...
14 to 24 years	116	101	15	19	141	57	84	...	180	9	171	...
25 to 54 years	596	457	130	79	1 005	375	617	10	990	7	983	...
55 to 64 years	100	87	7	14	153	104	49	9	243	...	243	...
65 years and over	159	159	...	9	196	133	63	...	360	27	333	...
Other family members	2 317	1 708	577	355	4 364	1 416	2 933	20	4 834	44	4 790	...
Under 3 years	227	130	88	25	423	128	295	...	500	...	500	...
3 to 5 years	272	195	77	40	516	136	380	...	524	4	520	...
6 to 13 years	839	602	224	134	1 730	416	1 314	12	1 563	15	1 548	...
14 to 17 years	355	266	89	67	723	249	474	...	728	...	728	...
18 to 21 years	143	121	22	41	260	111	149	...	344	...	344	...
22 to 54 years	307	225	72	33	406	224	174	...	820	...	820	...
55 to 64 years	37	32	5	7	95	37	58	...	146	...	146	...
65 years and over	137	137	...	8	211	115	89	8	209	25	184	...
Mean size of family	3.39	3.12	4.80	...	3.92	3.12	4.61	...	3.73	...	3.77	...
Female unrelated individuals	3 398	3 206	182	81	2 348	1 476	866	14	2 713	245	2 461	...
14 to 24 years	396	367	19	9	134	94	40	...	216	14	195	...
25 to 54 years	866	831	35	33	483	282	195	...	880	73	807	...
55 to 64 years	653	600	53	7	503	229	274	8	518	40	478	...
65 years and over	1 483	1 408	75	32	1 228	871	357	6	1 099	118	981	...

Table A-6. Persons by Family Status and Age and Families by Income Deficit by Residence in Census Tracts With a Poverty Rate of 20 Percent or More: 1970-Continued

Excludes inmates of institutions, members of Armed Forces living in barracks, college students living in dormitories, and unrelated individuals under 14 years. Data based on 1 percent sample, see text. For minimum base for derived figures (percent, median, etc.) and meaning of symbols, see text.

Kansas City, Missouri	Neighborhood 01				Neighborhood 02				Neighborhood 03			
	All races	White	Negro	Persons of Spanish language	All races	White	Negro	Persons of Spanish language	All races	White	Negro	Persons of Spanish language
INCOME BELOW POVERTY LEVEL												
All Persons												
Total	6 126	5 116	922	698	7 690	3 657	4 026	217	7 894	388	7 500	106
Percent below poverty level	27.4	25.5	43.6	24.8	33.9	27.2	43.9	46.2	28.6	34.8	28.4	20.8
In families	3 525	2 738	725	612	5 706	2 520	3 186	203	5 588	155	5 433	18
Head	896	739	133	126	1 355	693	662	39	1 419	71	1 348	48
Percent below poverty level	19.6	18.0	32.0	20.9	25.5	20.4	34.8	...	22.5	27.8	22.3	10
With related children under 18	575	463	103	91	991	463	528	32	969	26	943	10
Mean number of related children under 18	3.20	3.09	3.35	2.62	3.99	...	3.05	...	3.10	...
With related children under 6	378	299	75	70	586	249	337	...	586	9	577	...
14 to 24 years	138	125	13	16	154	93	61	7	226	17	209	8
25 to 54 years	478	386	83	75	899	394	505	32	699	17	682	32
55 to 64 years	90	67	23	8	73	59	14	...	158	...	158	...
65 years and over	190	161	14	27	229	147	82	...	336	37	299	...
Wife of head	496	433	47	78	563	384	179	28	658	26	632	9
14 to 24 years	120	106	14	23	88	58	30	11	130	9	121	9
25 to 54 years	180	162	10	35	288	187	101	17	247	...	247	...
55 to 64 years	79	61	10	8	90	64	26	...	95	...	95	...
65 years and over	117	104	13	12	97	75	22	...	186	17	169	...
Other family members	2 133	1 566	545	408	3 788	1 443	2 345	136	3 511	58	3 453	22
Under 3 years	388	254	125	50	489	231	258	...	556	...	556	...
3 to 5 years	298	235	63	104	536	218	318	...	476	4	472	...
6 to 13 years	925	651	261	171	1 735	590	1 145	96	1 500	15	1 485	...
14 to 17 years	327	268	59	64	588	221	367	34	487	11	476	...
18 to 21 years	67	48	19	6	180	77	103	6	194	11	183	11
22 to 54 years	84	72	12	8	127	71	56	...	200	...	200	...
55 to 64 years	17	17	...	5	23	7	16	...	37	...	37	...
65 years and over	27	21	6	...	110	28	82	...	61	17	44	...
Mean size of family	3.93	3.71	5.45	...	4.21	3.64	4.81	...	3.94	...	4.03	...
Unrelated individuals	2 601	2 378	197	86	1 984	1 137	840	14	2 306	233	2 067	11
Percent below poverty level	35.5	35.0	41.4	43.4	45.9	42.7	51.3	...	46.6	52.7	46.0	...
14 to 24 years	319	290	10	16	148	114	34	...	222	53	169	...
25 to 54 years	512	475	37	...	462	245	210	...	591	55	536	11
55 to 64 years	460	376	84	16	344	125	219	...	440	31	409	...
65 years and over	1 310	1 237	66	54	1 030	653	377	14	1 053	94	953	...
Persons in Families With Female Head and Female Unrelated Individuals												
Total	2 863	2 263	559	242	4 557	1 677	2 880	28	4 427	207	4 220	...
Percent below poverty level	42.8	39.6	61.4	43.4	55.5	47.1	62.4	...	47.5	62.3	47.0	...
In families	1 489	990	468	218	3 344	923	2 421	22	2 980	71	2 909	...
Head	338	248	81	41	721	258	463	10	725	35	690	...
Percent below poverty level	34.8	30.8	53.3	...	48.2	38.6	56.9	...	40.9	...	39.9	...
With related children under 18	304	214	81	33	633	212	421	10	626	16	610	...
Mean number of related children under 18	3.24	3.13	3.54	2.49	4.06	...	3.03	...	3.07	...
With related children under 6	163	101	58	12	401	123	278	...	380	9	371	...
14 to 24 years	36	28	8	...	99	49	50	...	120	9	111	...
25 to 54 years	257	182	66	26	531	154	377	10	485	7	478	...
55 to 64 years	22	15	7	8	24	16	8	...	18	...	18	...
65 years and over	23	23	...	7	67	39	28	...	102	19	83	...
Other family members	1 151	742	387	177	2 623	665	1 958	12	2 255	36	2 219	...
Under 3 years	137	55	73	13	338	105	233	...	329	...	329	...
3 to 5 years	129	91	38	29	378	110	268	...	303	4	299	...
6 to 13 years	589	372	204	89	1 224	269	955	12	962	15	947	...
14 to 17 years	212	160	52	38	363	79	284	...	360	...	360	...
18 to 21 years	35	23	12	...	104	30	74	...	88	...	88	...
22 to 54 years	49	41	8	8	98	42	56	...	132	...	132	...
55 to 64 years	23	7	16	...	37	...	37	...
65 years and over	95	23	72	...	44	17	27	...
Mean size of family	4.41	3.99	4.64	3.58	5.23	...	4.11	...	4.22	...
Female unrelated individuals	1 374	1 273	91	24	1 213	754	459	6	1 447	136	1 311	...
Percent below poverty level	40.4	39.7	50.0	...	51.7	51.1	53.0	...	53.3	55.5	53.3	...
14 to 24 years	159	139	10	...	99	65	34	...	149	14	135	...
25 to 54 years	281	261	20	...	186	90	96	...	348	24	324	...
55 to 64 years	219	182	37	7	222	83	139	...	272	25	247	...
65 years and over	715	691	24	17	706	516	190	6	678	73	605	...

Table A-6. Persons by Family Status and Age and Families by Income Deficit by Residence in Census Tracts With a Poverty Rate of 20 Percent or More: 1970—Continued

[Excludes inmates of institutions, members of Armed Forces living in barracks, college students living in dormitories, and unrelated individuals under 14 years. Data based on 15-percent sample, see text. For minimum base for derived figures (percent, median, etc.) and meaning of symbols, see text]

Kansas City, Missouri	Neighborhood 01				Neighborhood 02				Neighborhood 03			
	All races	White	Negro	Persons of Spanish language	All races	White	Negro	Persons of Spanish language	All races	White	Negro	Persons of Spanish language
RATIO OF INCOME TO POVERTY LEVEL												
Families												
Percent with income:												
Less than .50 of poverty level	9.0	8.3	15.7	12.6	11.3	9.0	15.6	...	8.3	15.7	6.0	...
.50 to .74	4.3	3.6	8.7	3.6	6.3	4.8	9.0	-	7.0	3.5	7.2	-
.75 to .99	6.3	6.0	7.7	4.6	7.9	6.7	10.2	...	7.1	8.6	7.1	...
1.00 to 1.24	8.0	7.8	11.3	14.8	8.0	5.7	12.1	...	7.6	3.1	7.8	-
1.25 to 1.49	7.6	6.8	15.9	4.0	8.5	8.4	8.8	...	5.4	2.7	5.5	-
1.50 to 1.99	14.3	14.3	13.3	14.6	12.4	13.7	9.8	...	16.8	14.1	16.8	...
2.00 to 2.99	22.8	22.5	23.1	22.4	20.4	22.5	16.4	...	23.4	18.4	23.6	...
3.00 or more	27.8	30.5	4.3	23.4	25.3	29.3	18.1	...	24.3	33.7	23.9	...
Unrelated Individuals												
Percent with income:												
Less than .50 of poverty level	16.0	15.5	23.1	15.2	20.2	18.7	22.6	...	23.6	22.2	23.6	-
.50 to .74	10.5	10.4	11.1	16.2	15.6	12.9	20.1	...	12.5	21.5	11.6	-
.75 to .99	8.9	9.1	7.1	12.1	10.1	11.1	8.6	-	10.5	9.0	10.7	...
1.00 to 1.24	6.9	6.7	9.2	-	9.7	10.1	9.3	...	6.5	2.5	6.9	-
1.25 to 1.49	7.0	6.9	9.9	7.6	6.5	6.5	6.0	-	6.3	7.0	6.2	-
1.50 to 1.99	10.7	10.3	13.2	7.1	10.2	10.0	10.9	-	12.3	5.0	13.1	-
2.00 to 2.99	18.5	19.0	13.2	22.7	14.4	16.1	11.6	...	16.6	9.5	17.2	...
3.00 or more	21.5	22.2	13.0	19.2	13.3	14.7	10.9	...	11.7	23.3	10.6	-
DIFFERENCE BETWEEN FAMILY INCOME AND POVERTY LEVEL												
Families below poverty level												
\$1 to \$249	896	739	133	126	1 355	693	662	39	1 419	71	1 348	18
\$250 to \$499	88	80	-	16	107	40	67	4	202	22	180	8
\$500 to \$999	106	89	17	6	96	68	28	-	131	-	131	-
\$1,000 to \$1,999	135	114	14	7	245	161	84	18	315	9	306	-
\$2,000 and over	192	159	29	21	410	213	197	17	348	33	315	10
Median income deficit	375	297	73	76	497	211	286	-	423	7	416	-
Mean income deficit	\$1 620	\$1 544	\$2000+	...	\$1 560	\$1 364	\$1 772	...	\$1 177	...	\$1 181	...
	\$1 771	\$1 704	\$2 275	...	\$1 717	\$1 599	\$1 841	...	\$1 467	...	\$1 484	...
Families above poverty level												
\$0 to \$249	3 685	3 369	282	477	3 958	2 696	1 241	68	4 896	184	4 698	50
\$250 to \$499	109	102	7	24	156	93	63	-	174	8	166	-
\$500 to \$999	109	100	9	6	137	43	94	-	152	-	152	-
\$1,000 to \$1,999	257	194	63	50	250	129	121	6	198	-	198	-
\$2,000 and over	447	411	36	39	552	401	151	7	598	16	582	-
Median income surplus	2 763	2 562	167	358	2 863	2 030	812	55	3 774	160	3 600	50
Mean income surplus	\$2000+	\$2000+	\$2000+	\$2000+	\$2000+	\$2000+	\$2000+	...	\$2000+	\$2000+	\$2000+	...
	\$5 344	\$5 577	\$2 607	\$5 036	\$5 334	\$5 748	\$4 446	...	\$5 578	\$6 807	\$5 540	...

Table A-7. Selected Housing Characteristics of Housing Units by Location in Census Tracts With a Poverty Rate of 20 Percent or More: 1970

[Excludes inmates of institutions, members of Armed Forces living in barracks, college students living in dormitories, and unrelated individuals under 14 years. Data based on percent sample, see text. For minimum base for derived figures (percent, median, etc.) and meaning of symbols, see text.]

	Neighborhood 01				Neighborhood 02				Neighborhood 03			
	All races	White	Negro	Persons of Spanish language	All races	White	Negro	Persons of Spanish language	All races	White	Negro	Persons of Spanish language
TENURE AND VACANCY STATUS												
Total, all units	12 799	9 680	833	783	10 794	5 554	3 323	160	11 751	543	9 402	75
Occupied	10 600	9 680	833	783	8 917	5 554	3 323	160	9 973	543	9 402	75
Population in units	21 642	19 399	2 010	2 856	22 479	13 029	9 380	504	27 214	969	26 185	239
Population per unit	2.04	2.00	2.41	3.65	2.52	2.35	2.82	3.15	2.73	1.78	2.79	3.07
Owner occupied	1 649	1 499	144	312	1 657	1 657	687	48	4 658	222	4 415	37
Population per unit	2.74	2.79	2.22	4.06	2.80	2.66	3.16	...	3.07	2.09	3.12	...
1-person households	439	370	63	23	624	426	198	7	1 017	102	908	9
65 years and over	279	251	28	23	437	308	129	7	439	41	391	9
Renter occupied	8 951	8 181	689	471	6 561	3 897	2 636	112	5 315	321	4 987	38
Population per unit	1.91	1.86	2.45	3.37	2.42	2.21	2.74	...	2.43	1.58	2.49	...
1-person households	5 229	4 886	320	136	2 762	1 647	1 094	22	2 288	186	2 095	...
65 years and over	1 857	1 739	111	49	1 221	802	419	7	848	75	773	...
Available vacant year-round	1 720	-	-	-	1 549	-	-	-	1 455	-	-	-
For rent	1 633	-	-	-	1 499	-	-	-	1 294	-	-	-
For sale only	87	-	-	-	50	-	-	-	161	-	-	-
Other vacant	479	-	-	-	328	-	-	-	323	-	-	-
YEAR STRUCTURE BUILT												
Owner occupied	1 649	1 499	144	312	1 657	1 657	687	48	4 658	222	4 415	37
1960 to March 1970	73	73	-	7	339	66	273	7	12	-	12	-
1950 to 1959	47	47	-	-	122	69	53	-	140	9	131	-
1940 to 1949	80	59	21	13	104	72	32	15	430	12	411	-
1939 or earlier	1 449	1 320	123	292	1 791	1 450	329	26	4 076	201	3 861	30
Renter occupied	8 951	8 181	689	471	6 561	3 897	2 636	112	5 315	321	4 987	38
1960 to March 1970	941	879	62	22	825	202	623	16	55	-	55	-
1950 to 1959	1 160	1 032	128	52	782	288	494	29	238	15	223	10
1940 to 1949	858	767	91	58	814	513	301	7	728	53	675	-
1939 or earlier	5 992	5 503	408	339	4 140	2 894	1 218	60	4 294	253	4 034	28
Owner occ. below poverty level	375	327	48	68	507	347	160	13	1 218	75	1 136	20
1960 to March 1970	15	15	-	7	42	12	30	-	-	-	-	-
1950 to 1959	5	5	-	-	27	13	14	-	34	-	34	-
1940 to 1949	36	25	11	13	45	28	17	-	139	-	132	-
1939 or earlier	319	282	37	48	393	294	99	13	1 045	75	970	20
Renter occ. below poverty level	2 589	2 294	252	129	2 450	1 252	1 198	42	1 961	142	1 819	9
1960 to March 1970	150	113	37	33	303	36	267	7	31	-	31	-
1950 to 1959	301	273	28	33	436	146	290	29	84	8	76	-
1940 to 1949	261	222	39	10	293	185	108	-	290	8	282	-
1939 or earlier	1 877	1 686	148	86	1 418	885	533	6	1 556	126	1 430	9
UNITS IN STRUCTURE												
All occupied units	10 600	9 680	833	783	8 917	5 554	3 323	160	9 973	543	9 402	75
1	1 684	1 548	115	783	2 202	1 447	743	42	5 058	235	4 816	42
2 to 4	1 810	1 685	112	357	2 187	1 704	469	42	2 519	45	2 469	9
5 to 9	1 680	1 409	249	189	1 931	1 227	704	45	1 254	59	1 179	9
10 to 49	3 128	2 899	214	93	1 883	995	874	24	907	150	757	15
50 or more	2 282	2 123	143	35	714	181	533	7	235	54	181	-
Mobile home or trailer	16	16	-	-	-	-	-	-	-	-	-	-
YEAR BUILT MOVED INTO UNIT												
All occupied units	10 600	9 680	833	783	8 917	5 554	3 323	160	9 973	543	9 402	75
1968 to March 1970	5 209	4 700	456	278	3 341	2 178	3 323	160	9 973	543	9 402	75
1965 to 1967	1 775	1 623	137	144	1 781	888	1 156	57	2 770	173	2 590	34
1960 to 1964	1 350	1 254	96	63	1 309	838	872	55	1 586	87	1 490	-
1959 or earlier	2 266	2 103	144	298	2 486	1 650	824	27	1 316	41	1 275	-
Occ. units below poverty level	2 964	2 621	300	197	2 957	1 599	1 358	55	4 301	242	4 047	41
1968 to March 1970	1 372	1 185	167	85	1 121	647	474	22	3 179	217	2 955	21
1965 to 1967	515	466	34	23	621	273	348	20	1 023	93	930	9
1960 to 1964	396	363	33	8	470	253	217	13	512	14	498	-
1959 or earlier	681	607	66	81	745	426	319	-	376	11	365	-
SELECTED EQUIPMENT												
All occupied units	10 600	9 680	833	783	8 917	5 554	3 323	160	9 973	543	9 402	75
Percent with air conditioning	27.3	28.8	10.0	20.9	20.7	24.8	13.5	26.3	18.0	16.9	18.1	-
Percent with automobile	48.4	49.4	37.7	50.6	48.9	56.1	36.7	61.9	52.7	49.5	53.0	-
Percent with telephone	74.8	75.5	66.6	79.1	74.0	72.9	76.0	73.1	75.8	64.3	76.5	-
Percent with all plumbing facilities	88.3	88.3	90.5	92.8	93.9	94.6	92.6	100.0	94.6	95.0	94.5	-
Occ. units below poverty level	2 964	2 621	300	197	2 957	1 599	1 358	55	3 179	217	2 955	21
Percent with air conditioning	14.6	15.9	2.0	3.6	7.5	10.8	3.8	-	9.5	7.8	9.6	-
Percent with automobile	25.1	25.4	23.7	21.3	26.9	33.7	18.9	-	35.5	48.8	34.7	-
Percent with telephone	66.4	67.1	59.7	70.6	69.6	66.2	73.6	-	72.3	66.8	72.6	-
Percent with all plumbing facilities	80.6	79.7	93.3	78.7	89.4	88.9	90.1	-	91.5	90.8	91.6	-
PERSONS PER ROOM												
Owner occupied	1 649	1 499	144	312	1 657	1 657	687	48	4 658	222	4 415	37
1.00 or fewer persons per room	1 571	1 421	144	263	2 245	1 629	604	48	4 300	209	4 070	25
1.01 to 1.50 persons per room	73	73	-	44	94	28	66	-	295	13	282	12
1.51 or more persons per room	5	5	-	5	17	-	17	-	63	-	63	-
Owner occ. below poverty level	375	327	48	68	507	347	160	13	1 218	75	1 136	20
1.00 or fewer persons per room	346	298	48	68	452	340	160	13	1 137	75	1 055	20
1.01 to 1.50 persons per room	29	29	-	19	48	7	41	-	72	-	72	-
1.51 or more persons per room	-	-	-	-	7	-	7	-	9	-	9	-

Table A-7. Selected Housing Characteristics of Housing Units by Location in Census Tracts With a Poverty Rate of 20 Percent or More: 1970—Continued

[Excludes inmates of institutions, members of Armed Forces living in barracks, college students living in dormitories, and unrelated individuals under 14 years. Data based on 15-percent sample, see text. For minimum base for derived figures (percent, median, etc.) and meaning of symbols, see text.]

Kansas City, Missouri	Neighborhood 01				Neighborhood 02				Neighborhood 03			
	All races	White	Negro	Persons of Spanish language	All races	White	Negro	Persons of Spanish language	All races	White	Negro	Persons of Spanish language
PERSONS PER ROOM— Con.												
Renter occupied.....	8 951	8 181	689	471	6 561	3 897	2 636	112	5 315	321	4 987	38
1.00 or fewer persons per room.....	8 196	7 530	610	315	5 883	3 576	2 279	89	4 759	315	4 437	34
1.01 to 1.50 persons per room.....	492	418	64	119	528	269	259	14	422	—	422	4
1.51 or more persons per room.....	263	233	15	37	150	52	98	9	134	6	128	—
Renter occ. below poverty level.....	2 589	2 294	252	129	2 450	1 252	1 198	42	1 961	142	1 819	9
1.00 or fewer persons per room.....	2 279	2 047	204	81	2 076	1 093	983	28	1 735	142	1 593	9
1.01 to 1.50 persons per room.....	193	160	33	28	284	121	163	14	144	—	144	—
1.51 or more persons per room.....	117	87	15	20	90	38	52	—	82	—	82	—
VALUE OF PROPERTY												
Specified owner occupied ¹	971	902	63	238	1 314	1 014	288	...	3 780	196	3 577	...
less than \$5,000.....	132	125	7	34	105	52	49	...	700	59	641	...
\$5,000 to \$9,999.....	505	469	36	173	703	516	187	...	2 222	91	2 124	...
\$10,000 to \$12,499.....	188	168	20	24	291	244	39	...	462	—	462	...
\$12,500 to \$14,999.....	52	46	—	7	113	100	13	...	201	9	192	...
\$15,000 to \$17,499.....	14	14	—	—	42	42	—	...	115	31	84	...
\$17,500 to \$19,999.....	13	13	—	—	20	20	—	...	44	—	44	...
\$20,000 to \$24,999.....	45	45	—	—	28	28	—	...	29	6	23	...
\$25,000 to \$34,999.....	14	14	—	—	12	12	—	...	7	—	7	...
\$35,000 or more.....	8	8	—	—	—	—	—	...	—	—	—	...
Median value of property.....	\$8 500	\$8 500	...	\$7 500	\$8 900	\$9 400	\$7 500	...	\$7 700	\$7 100	\$7 700	...
Mean value of property.....	\$9 700	\$9 800	...	\$7 400	\$9 600	\$10 200	\$7 600	...	\$8 000	\$8 300	\$8 000	...
Specified owner occupied below poverty level ¹	208	184	24	61	291	188	103	...	934	75	852	...
less than \$5,000.....	54	54	—	21	22	16	6	...	248	20	228	...
\$5,000 to \$9,999.....	114	97	17	33	191	120	71	...	494	33	454	...
\$10,000 to \$12,499.....	7	—	7	—	39	20	19	...	106	—	106	...
\$12,500 to \$14,999.....	13	13	—	7	19	12	7	...	44	—	44	...
\$15,000 to \$17,499.....	—	—	—	—	—	—	—	...	22	22	—	...
\$17,500 to \$19,999.....	13	13	—	—	8	8	—	...	13	—	13	...
\$20,000 to \$24,999.....	7	7	—	—	6	6	—	...	7	—	7	...
\$25,000 or more.....	—	—	—	—	6	6	—	...	—	—	—	...
Median value of property.....	\$7 200	\$7 000	\$8 200	\$8 300	\$7 200	...	\$7 200	...
Mean value of property.....	\$8 100	\$8 200	\$9 400	\$9 900	\$7 400	...	\$7 200	...
GROSS RENT												
Specified renter occupied ²	8 905	8 135	689	463	6 513	3 886	2 599	106	5 291	321	4 963	38
less than \$40.....	644	570	66	34	521	220	301	7	124	27	97	—
\$40 to \$59.....	1 976	1 716	237	82	1 917	908	1 002	15	1 492	98	1 387	—
\$60 to \$79.....	2 716	2 498	203	122	2 039	1 363	669	46	1 830	111	1 719	28
\$80 to \$99.....	1 263	1 155	91	54	1 104	729	368	21	924	47	877	10
\$100 to \$119.....	574	524	45	33	401	279	122	17	477	25	452	—
\$120 to \$149.....	699	690	9	20	265	191	67	—	252	7	245	—
\$150 to \$199.....	506	506	—	—	99	90	9	—	86	—	86	—
\$200 to \$249.....	155	155	—	—	16	16	—	—	14	—	14	—
\$250 or more.....	16	—	—	—	—	—	—	—	—	—	—	—
No cash rent.....	356	305	38	18	151	90	61	—	92	6	86	—
Median gross rent.....	\$72	\$73	\$62	\$77	\$67	\$71	\$59	...	\$71	\$66	\$71	...
Mean gross rent.....	\$81	\$82	\$64	\$74	\$70	\$75	\$63	...	\$74	\$65	\$75	...
Specified renter occupied below poverty level ²	2 577	2 282	252	129	2 438	1 246	1 192	36	1 955	142	1 813	9
less than \$40.....	365	321	36	21	365	168	197	7	70	20	50	—
\$40 to \$59.....	843	722	113	28	853	365	488	—	609	50	559	—
\$60 to \$79.....	781	707	67	49	727	440	287	23	598	29	569	9
\$80 to \$99.....	256	241	8	24	302	185	117	6	296	15	281	—
\$100 to \$119.....	71	43	23	7	60	21	39	—	212	15	197	—
\$120 to \$149.....	59	59	—	—	39	14	25	—	96	7	89	—
\$150 to \$199.....	80	80	—	—	26	26	—	—	21	—	21	—
\$200 to \$249.....	—	—	—	—	7	7	—	—	8	—	8	—
\$250 or more.....	—	—	—	—	—	—	—	—	—	—	—	—
Median gross rent.....	\$60	\$61	\$55	...	\$59	\$64	\$56	...	\$69	\$59	\$70	...
Mean gross rent.....	\$64	\$64	\$59	...	\$61	\$65	\$58	...	\$73	\$64	\$74	...
GROSS RENT AS PERCENTAGE OF INCOME BY POVERTY STATUS IN 1969												
Specified renter occupied ³	8 241	7 568	618	440	6 158	3 679	2 451	106	4 982	293	4 682	38
less than 20 percent.....	3 841	3 566	250	254	2 822	1 759	1 042	52	2 222	158	2 057	29
20 to 24 percent.....	842	734	92	20	649	368	281	8	451	7	444	—
25 to 34 percent.....	1 129	1 005	117	47	929	525	397	24	560	23	537	9
35 to 49 percent.....	972	909	63	73	605	367	238	—	718	13	705	—
50 percent or more.....	1 457	1 354	96	46	1 153	660	493	22	1 031	92	939	—
Specified renter occupied below poverty level ³	2 147	1 911	214	124	2 175	1 109	1 066	36	1 693	114	1 579	9
less than 20 percent.....	84	62	22	—	146	52	94	14	59	—	59	—
20 to 24 percent.....	70	56	6	13	155	69	86	—	29	—	29	—
25 to 34 percent.....	285	243	35	7	350	139	211	—	159	16	143	9
35 to 49 percent.....	509	454	55	58	434	244	190	—	431	6	425	—
50 percent or more.....	1 199	1 096	96	46	1 090	605	485	22	1 015	92	923	—

¹Limited to one-family homes on less than 10 acres and no business on property. Cooperatives, condominiums, mobile homes, and trailers are excluded. ²Excludes one-family homes on 10 acres or more. Specified renter occupied units below poverty level include "no cash rent" units not shown separately. ³Excludes one-family homes on 10 acres or more, all "no cash rent" units, and units for which the income of the family or primary individual was reported as "none" or "loss."

Table A-1. Selected Characteristics of Persons and Families by Residence in Census Tracts With a Poverty Rate of 20 Percent or More: 1970

[Excludes inmates of institutions, members of Armed Forces living in barracks, college students living in dormitories, and unrelated individuals under 14 years. Data based on 1 percent sample, see text. For minimum base for derived figures (percent, median, etc.) and meaning of symbols, see text.]

Kansas City, Missouri	Neighborhood 04				Persons of Spanish language	All races	White	Negro	Persons of Spanish language	All races	White	Negro	Persons of Spanish language
	All races	White	Negro	Persons of Spanish language									
RACE													
All Income Levels													
All persons	31 062	5 566	25 423	754									
Persons of Spanish language	754	613	135	754									
White	5 566	5 566		613									
Negro	25 423		25 423	135									
Other races	73			6									
American Indian	38												
Japanese													
Chinese													
Filipino													
All other	35			6									
Percent Below Poverty Level													
All persons	29.5	21.5	31.3	18.7									
Persons of Spanish language	18.7	16.8	23.7	18.7									
White	21.5	21.5		16.8									
Negro	31.3		31.3	23.7									
Other races													
American Indian													
Japanese													
Chinese													
Filipino													
All other													
RELATIONSHIP TO HEAD OF HOUSEHOLD FOR PERSONS BELOW POVERTY LEVEL													
All persons	9 174	1 199	7 969	141									
65 years and over	1 008	476	532										
In households	9 092	1 170	7 916	128									
Head of household	2 867	781	2 086	27									
Family head	1 494	164	1 330	16									
65 years and over	198	65	133										
Female	768	74	694										
Primary individual	1 373	617	756	11									
65 years and over	637	378	259										
Female	800	381	419	4									
Related child under 18 years	4 614	175	4 433	83									
Related child under 6 years	1 297	101	1 190	26									
Other relative of head	1 285	125	1 160	18									
Not related to head	326	89	237										
In group quarters	82	29	53	13									
AGE													
All males below poverty level													
Under 3 years	3 974	505	3 465	69									
3 to 5 years	241	29	206	13									
6 to 13 years	368	30	338	6									
14 to 17 years	1 309	51	1 258	20									
18 to 21 years	389	15	374	7									
22 to 24 years	265	18	247										
25 to 34 years	110	32	78										
35 to 44 years	221	99	122	15									
45 to 54 years	243	12	231										
55 to 64 years	249	36	213	8									
65 years and over	207	29	178										
Median age	37.4	15.4	22.0										
	13.7	31.8	12.6										
All females below poverty level													
Under 3 years	5 198	694	4 504	72									
3 to 5 years	266	28	238	7									
6 to 13 years	422	14	408										
14 to 17 years	1 213	16	1 197	30									
18 to 21 years	530		530										
22 to 24 years	242	36	206										
25 to 34 years	236	58	178	24									
35 to 44 years	523	45	478										
45 to 54 years	477	26	451	7									
55 to 64 years	278	30	248	4									
65 years and over	377	119	258										
Median age	63.4	32.2	31.2										
	19.8	61.9	16.1										
YEARS OF SCHOOL COMPLETED													
All Income Levels													
Males, 22 years and over													
Elementary: 0 to 7 years	7 177	1 889	5 283	195									
8 years	1 734	374	1 360	49									
High school: 1 to 3 years	749	233	516	43									
4 years	1 919	403	1 511	34									
College: 1 to 3 years	2 079	583	1 496	64									
4 years or more	541	220	321	5									
Median years of school completed	15.5	7.6	7.9	5									
	10.7	11.5	10.5	9.5									

Table A-1. Selected Characteristics of Persons and Families by Residence in Census Tracts With a Poverty Rate of 20 Percent or More: 1970—Continued

[Excludes inmates of institutions, members of Armed Forces living in barracks, college students living in dormitories, and unrelated individuals under 14 years. Data based on 15-percent sample, see text. For minimum base for derived figures (percent, median, etc.) and meaning of symbols, see text]

	Neighborhood 04											
	All races	White	Negro	Persons of Spanish language	All races	White	Negro	Persons of Spanish language	All races	White	Negro	Persons of Spanish language
Kansas City, Missouri												
YEARS OF SCHOOL COMPLETED—												
Con.												
All Income Levels— Con.												
Female, 22 years and over	9 069	2 366	6 649	179								
Elementary: 0 to 7 years	1 632	327	1 290	25								
8 years	1 137	414	723	37								
High school: 1 to 3 years	2 830	566	2 231	46								
4 years	2 463	745	1 718	46								
College: 1 to 3 years	659	179	474	12								
4 years or more	348	135	213	13								
Median years of school completed	10.9	11.3	10.8	10.8								
Income Below Poverty Level												
Male, 22 years and over	1 404	362	1 042	23								
Less than 8 years	468	123	345	8								
8 to 11 years	565	98	467	8								
12 years or more	371	141	230	7								
Female, 22 years and over	2 525	600	1 925	35								
Less than 8 years	640	130	510	4								
8 to 11 years	1 261	247	1 014	18								
12 years or more	624	223	401	13								
EMPLOYMENT STATUS AND AGE												
All Income Levels												
Male												
16 to 21 years ¹	1 670	186	1 484	49								
Employed	797	93	704	27								
Unemployed	136	—	136	—								
Not in labor force	724	93	631	22								
22 to 64 years ¹	6 049	1 362	4 682	172								
Employed	5 105	1 156	3 944	172								
Unemployed	218	13	205	—								
Not in labor force	669	193	476	—								
Family head, 22 to 64 years ¹	3 828	753	3 070	142								
Employed	3 348	701	2 642	142								
Unemployed	146	13	133	—								
Not in labor force	295	39	256	—								
Female												
16 to 21 years	1 786	158	1 624	23								
Employed	687	105	582	23								
Unemployed	69	—	69	—								
Not in civilian labor force	1 030	53	973	—								
22 to 64 years	7 398	1 505	5 845	172								
Employed	4 422	845	3 544	116								
Unemployed	286	45	226	—								
Not in civilian labor force	2 690	615	2 075	56								
Family head, 22 to 64 years	1 594	173	1 421	15								
Employed	1 065	135	930	—								
Unemployed	105	—	105	—								
Not in civilian labor force	424	38	386	15								
Wife of head, 22 to 64 years	3 542	670	2 851	115								
Employed	1 919	326	1 587	96								
Unemployed	109	15	79	—								
Not in civilian labor force	1 514	329	1 185	19								
Income Below Poverty Level												
Male												
16 to 21 years ¹	474	18	456	—								
Employed	176	9	167	—								
Unemployed	20	—	20	—								
Not in labor force	278	9	269	—								
22 to 64 years ¹	1 030	208	822	23								
Employed	541	66	475	23								
Unemployed	43	—	43	—								
Not in labor force	419	142	277	—								
Family head, 22 to 64 years ¹	558	53	505	16								
Employed	347	44	303	16								
Unemployed	48	—	48	—								
Not in labor force	163	9	154	—								

¹Includes members of Armed Forces not living in barracks and not shown separately.

Table A-1. Selected Characteristics of Persons and Families by Residence in Census Tracts With a Poverty Rate of 20 Percent or More: 1970-Continued

(Excludes inmates of institutions, members of Armed Forces living in barracks, college students living in dormitories, and unrelated individuals under 14 years. Data based on 15 percent sample, see text. For minimum base for derived figures (percent, median, etc.) and meaning of symbols, see text)

Kansas City, Missouri	Neighborhood 04										
	All races			Persons of Spanish language	All races			Persons of Spanish language	All races		
	White	Negro	White		Negro	White	Negro		White	Negro	Persons of Spanish language
EMPLOYMENT STATUS AND AGE—Con.											
Income Below Poverty Level—Con.											
Female											
16 to 21 years											
Employed	467	36	431								
Unemployed	140	36	104								
Not in civilian labor force	20	—	20								
307	307	—	307								
22 to 64 years											
Employed	1 891	278	1 613	35							
Unemployed	679	62	617	24							
Not in civilian labor force	106	8	98								
1 106	1 106	208	898								
Family head, 22 to 64 years											
Employed	682	46	636	11							
Unemployed	328	30	298								
Not in civilian labor force	65	—	65								
289	289	16	273								
Wife of head, 22 to 64 years											
Employed	524	53	471	18							
Unemployed	134	—	134	11							
Not in civilian labor force	18	—	18								
372	372	53	319	7							
SELECTED OCCUPATIONS											
All Income Levels											
Male employed, 22 to 64 years²											
Prof., tech., and kindred workers	5 105	1 156	3 944	172							
Health workers, exc. practitioners	215	50	165	5							
Teachers, elem. and secondary	17	—	17								
Managers and admin., exc. farm	22	—	22								
Self-employed	132	29	103								
Sales workers	42	16	26								
Retail trade	114	52	62								
Clerical and kindred workers	63	32	31								
Postal clerks and mail carriers	540	169	371	44							
Shipping, receiving & stock clerks	129	21	108								
Bkksprs., cashiers, & bank tellers	140	71	69	31							
41	41	27	14								
Craftsmen and kindred workers	802	350	452	39							
Construction craftsmen	169	63	106								
Mechanics and repairmen	215	113	102	8							
Operatives, except transport	973	168	805	31							
Assemblers	246	52	194								
Checkers, exam., & inspectors, mfg.	6	6	—								
Pkrs. & wrappers, inc. meat & prod.	44	7	37								
Sewers, stitchers, & textile oper.	10	—	10								
Transport equipment operatives	495	88	407	9							
Truck drivers	187	35	152								
Laborers, except farm	894	128	761	9							
Construction	141	33	108								
Freight, material, & stock handlers	227	12	210								
Service workers, exc. private hshld. ³	877	122	755	35							
Cleaning service workers	358	64	294	22							
Food service workers	118	22	96	7							
Health service workers	21	9	12								
Personal service workers	54	5	49								
Protective service workers	84	22	62								
Private household workers	29	—	29								
Female employed, 22 to 64 yrs.²											
Prof., tech., and kindred workers	4 422	845	3 544	116							
Health workers, exc. practitioners	548	110	438	19							
Teachers, elem. and secondary	217	44	173								
Managers and admin., exc. farm	120	31	89	13							
Self-employed	123	28	95								
Sales workers	34	13	21								
Retail trade	148	64	84								
Clerical and kindred workers	132	57	75								
Bkksprs., cashiers, & bank tellers	776	232	544	27							
Secretaries, steno., & typists	50	26	24								
145	145	53	92	5							
Craftsmen and kindred workers	74	10	64	10							
Operatives, except transport	820	170	644	39							
Laundry & dry cleaning operatives ⁴	107	13	94	33							
Assemblers	124	31	93								
Pkrs. & wrappers, inc. meat & prod.	64	6	58								
Sewers, stitchers, & textile oper.	70	17	47								
Transport equipment operatives	19	—	19								
Laborers, except farm	170	15	155								
Service workers, exc. private hshld. ³	1 298	183	1 115	21							
Cleaning service workers	287	15	272								
Food service workers	277	83	194	21							
Health service workers	307	43	264								
Personal service workers	77	—	77								
Private household workers	428	33	368								

¹Includes "farm workers" not shown separately. ²Allocated cases are included in the total but not in the distribution.

³Includes "clothing ironers and pressers."

⁴Protective service workers and allocated

Table A-1. Selected Characteristics of Persons and Families by Residence in Census Tracts With a Poverty Rate of 20 Percent or More: 1970—Continued

[Excludes inmates of institutions, members of Armed Forces living in barracks, college students living in dormitories, and unrelated individuals under 14 years. Data based on 15-percent sample, see text. For minimum base for derived figures (percent, median, etc.) and meaning of symbols, see text]

	Neighborhood 04											
	All races	White	Negro	Persons of Spanish language	All races	White	Negro	Persons of Spanish language	All races	White	Negro	Persons of Spanish language
Kansas City, Missouri												
SELECTED OCCUPATIONS—Con.												
Income Below Poverty Level												
Male employed, 22 to 64 yrs. ²	541	66	475	23								
Prof., tech., and kindred workers	19	12	7	—								
Managers and admin., exc. farm	6	—	6	—								
Sales workers	—	—	—	—								
Clerical and kindred workers	34	—	34	7								
Craftsmen and kindred workers	23	—	23	—								
Operatives, except transport	131	23	108	8								
Transport equipment operatives	41	6	35	—								
Laborers, except farm	140	11	129	—								
Service workers, exc. private hshld	115	14	101	8								
Private household workers	10	—	10	—								
Female employed, 22 to 64 yrs. ²	679	62	617	24								
Prof., tech., and kindred workers	37	13	24	13								
Managers and admin., exc. farm	40	—	40	—								
Sales workers	19	—	19	—								
Clerical and kindred workers	56	15	41	—								
Craftsmen and kindred workers	7	—	7	—								
Operatives, except transport	129	15	114	11								
Transport equipment operatives	7	—	7	—								
Laborers, except farm	13	—	13	—								
Service workers, exc. private hshld	262	19	243	—								
Private household workers	109	—	109	—								
FAMILY STATUS AND AGE												
All Income Levels												
Both Sexes												
Head of family: 14 to 21 yrs.	243	32	211	—								
22 to 54 yrs.	4 591	733	3 853	140								
Wife of head: 14 to 21 yrs.	353	63	290	—								
22 to 54 yrs.	2 995	533	2 441	108								
Unrelated indiv.: 14 to 21 yrs.	326	62	264	—								
22 to 54 yrs.	2 073	695	1 378	54								
Female												
Head of family: 14 to 21 yrs.	46	—	46	—								
22 to 54 yrs.	1 392	145	1 247	15								
Unrelated indiv.: 14 to 21 yrs.	179	36	143	—								
22 to 54 yrs.	877	290	587	24								
Income Below Poverty Level												
Both Sexes												
Head of family: 14 to 21 yrs.	56	—	56	—								
22 to 54 yrs.	1 106	90	1 016	16								
Wife of head: 14 to 21 yrs.	65	—	65	—								
22 to 54 yrs.	397	36	361	18								
Unrelated indiv.: 14 to 21 yrs.	230	62	168	—								
22 to 54 yrs.	597	175	422	24								
Female												
Head of family: 14 to 21 yrs.	19	—	19	—								
22 to 54 yrs.	648	46	602	—								
Unrelated indiv.: 14 to 21 yrs.	118	36	82	—								
22 to 54 yrs.	322	70	252	17								

²Includes "farm workers" not shown separately.

Table A-2. Characteristics of the Population by Residence in Census Tracts With a Poverty Rate of 20 Percent or More: 1970

[Excludes inmates of institutions, members of Armed Forces living in barracks, college students living in dormitories, and unrelated individuals under 14 years. Data based on 15 percent sample, see text. For minimum base for derived figures (percent, median, etc.) and meaning of symbols, see text.]

Kansas City, Missouri

	Neighborhood D4				Persons of Spanish language	All races	White	Negro	Persons of Spanish language	All races	White	Negro	Persons of Spanish language
	All races	White	Negro	Persons of Spanish language									
RELATIONSHIP TO HEAD													
All persons	31 062	5 566	25 423	754									
In households	30 807	5 496	25 238	741									
Head of household	9 978	2 828	7 112	191									
Family head	6 457	1 299	5 147	157									
65 years old and over	792	341	445	-									
Female	1 840	260	1 574	15									
Primary individual	3 521	1 529	1 965	34									
Female	1 858	865	966	4									
Related child under 18 years old	12 509	1 021	11 474	330									
Other relative of head	7 758	1 450	6 287	196									
Not related to head	562	197	365	24									
In group quarters	255	70	185	13									
AGE													
Male, all ages													
Under 3 years	14 463	2 619	11 829	417									
3 to 5 years	865	106	753	24									
6 to 13 years	966	91	875	36									
14 to 17 years	3 083	265	2 814	71									
18 to 21 years	1 325	137	1 188	64									
22 to 24 years	1 047	131	916	27									
25 to 34 years	556	181	375	15									
35 to 44 years	1 518	323	1 190	40									
45 to 54 years	1 535	204	1 331	26									
55 to 64 years	1 480	397	1 083	74									
65 years and over	960	257	703	17									
Median age	1 128	527	601	23									
	20.8	37.7	18.2	19.0									
Female, all ages													
Under 3 years	16 599	2 947	13 594	337									
3 to 5 years	808	78	730	12									
6 to 13 years	1 053	85	968	10									
14 to 17 years	3 040	205	2 835	95									
18 to 21 years	1 538	67	1 467	18									
22 to 24 years	1 091	146	945	23									
25 to 34 years	770	189	581	56									
35 to 44 years	1 775	245	1 524	33									
45 to 54 years	1 969	262	1 692	47									
55 to 64 years	1 465	352	1 113	29									
65 years and over	1 419	457	935	7									
Median age	1 671	861	804	7									
	24.0	49.6	20.4	21.6									
PLACE OF BIRTH													
Total population													
Born in State of residence	31 062	5 566	25 423	754									
Born in different State	14 990	2 711	12 250	325									
Northeast	9 982	1 921	8 023	280									
North Central	138	91	47	-									
South	3 192	1 197	1 989	236									
West	6 311	462	5 817	22									
Puerto Rico and outlying areas	341	171	170	22									
Foreign born	13	13	-	13									
Not reported and other	290	261	23	109									
	5 787	660	5 127	27									
RESIDENCE IN 1965													
Total, 5 years and over													
Same house as in 1970	27 957	5 246	22 644	672									
Different house in United States	14 643	2 854	11 748	406									
Same county	8 436	1 575	6 861	201									
Different county	6 775	1 118	5 657	145									
Same State	1 661	457	1 204	56									
Different State	307	154	153	8									
Northeast	1 354	303	1 051	48									
North Central	41	29	12	-									
South	487	132	355	41									
West	617	107	510	7									
Moved, residence not rptd., abroad	209	35	174	65									
	4 878	817	4 035	65									
SCHOOL ENROLLMENT													
All Income Levels													
Total enrolled, 3 to 21 yr. old													
Nursery school:	9 464	731	8 729	232									
Public	64	22	42	-									
Private	53	-	53	-									
Kindergarten:	505	26	479	5									
Public	-	-	-	-									
Private	5 804	412	5 388	168									
Elem. (1 to 8 yr.):	260	86	174	38									
Public	2 446	89	2 357	8									
Private	125	55	70	13									
College	207	41	166	-									
Total enrolled, 3 to 21 yr. old	9 464	731	8 729	232									
3 to 5 years old	435	31	404	-									
6 to 13 years old	5 808	454	5 350	166									
14 and 15 years old	1 448	110	1 338	33									
16 and 17 years old	1 129	46	1 083	6									
18 to 21 years old	644	90	554	27									

Table A-2. Characteristics of the Population by Residence in Census Tracts With a Poverty Rate of 20 Percent or More: 1970-Continued

[Excludes inmates of institutions, members of Armed Forces living in barracks, college students living in dormitories, and unrelated individuals under 14 years. Data based on 15-percent sample, see text. For minimum base for derived figures (percent, median, etc.) and meaning of symbols, see text]

Kansas City, Missouri	Neighborhood 04										Persons of Spanish language	
	All races	White	Negro	Persons of Spanish language	All races	White	Negro	Persons of Spanish language	All races	White		Negro
SCHOOL ENROLLMENT—												
Continued												
All Income Levels—Continued												
Percent enrolled, 3 to 21 yr. old	72.0	64.9	72.7	67.4								
3 to 5 years old	21.5	17.6	21.9	—								
6 to 13 years old	94.9	96.6	94.7	100.0								
14 and 15 years old	93.7	80.3	95.0	—								
16 and 17 years old	85.7	—	86.8	—								
18 to 21 years old	30.1	32.5	29.8	—								
Income Below Poverty Level												
Total enrolled, 3 to 21 yr. old	3 546	113	3 433	57								
Nursery school:												
Public	34	6	28	—								
Private	26	—	26	—								
Kindergarten:												
Public	226	9	217	—								
Private	—	—	—	—								
Elem. (1 to 8 yr.):												
Public	2 370	47	2 323	22								
Private	76	28	48	28								
High school (1 to 4 yr.):												
Public	761	8	753	—								
Private	21	7	14	7								
College												
Public	32	8	24	—								
Total enrolled, 3 to 21 yr. old	3 546	113	3 433	57								
3 to 5 years old	232	15	217	—								
6 to 13 years old	2 356	67	2 289	50								
14 and 15 years old	485	15	470	7								
16 and 17 years old	376	—	376	—								
18 to 21 years old	97	16	81	—								
Percent enrolled, 3 to 21 yr. old	74.8	62.8	75.3	—								
3 to 5 years old	29.4	—	29.1	—								
6 to 13 years old	93.4	—	93.2	—								
14 and 15 years old	100.0	—	100.0	—								
16 and 17 years old	86.6	—	86.6	—								
18 to 21 years old	19.1	—	17.9	—								
YEARS OF SCHOOL COMPLETED												
All Income Levels												
Male, 25 years old and over	6 621	1 708	4 908	180								
Elementary:												
0 to 7 years	1 687	347	1 340	40								
8 years	725	229	496	37								
High school:												
1 to 3 years	1 751	379	1 367	34								
4 years	1 835	496	1 339	64								
College:												
1 to 3 years	475	181	294	—								
4 years or more	148	76	72	5								
Median years of school completed	10.5	11.2	10.4	10.1								
Female, 25 years old and over	8 299	2 177	6 068	123								
Elementary:												
0 to 7 years	1 595	306	1 274	18								
8 years	1 130	414	716	37								
High school:												
1 to 3 years	2 562	511	2 018	28								
4 years	2 154	699	1 455	28								
College:												
1 to 3 years	564	147	411	12								
4 years or more	294	100	194	—								
Median years of school completed	10.7	11.2	10.6	—								
Income Below Poverty Level												
Male, 25 years old and over	1 294	330	964	23								
Less than 8 years	457	112	345	8								
8 to 11 years	513	98	415	8								
12 years or more	324	120	204	7								
Female, 25 years old and over	2 289	542	1 747	11								
Less than 8 years	625	121	504	4								
8 to 11 years	1 152	242	910	7								
12 years or more	512	179	333	—								
PERSONS 16 TO 21 YEARS OLD NOT IN SCHOOL												
All Income Levels												
Male	812	81	731	16								
Not high school graduate	426	30	396	16								
Employed or in Armed Forces	257	14	243	—								
Unemployed	59	—	59	—								
Not in labor force	110	16	94	16								
High school graduate	386	51	335	—								
Employed or in Armed Forces	280	33	247	—								
Unemployed	25	—	25	—								
Not in labor force	81	18	63	—								
Female	871	127	740	23								
Not high school graduate	368	41	323	18								
Employed or in Armed Forces	165	30	135	18								
Unemployed	33	—	33	—								
Not in labor force	170	11	155	—								
High school graduate	503	86	417	5								
Employed or in Armed Forces	289	59	230	5								
Unemployed	17	—	17	—								
Not in labor force	197	27	170	—								

Table A-2. Characteristics of the Population by Residence in Census Tracts With a Poverty Rate of 20 Percent or More: 1970—Continued

Excludes inmates of institutions, members of Armed Forces living in barracks, college students living in dormitories, and unrelated individuals under 14 years. Data based on 10 percent sample, see text. For minimum base for derived figures (percent, median, etc.) and meaning of symbols, see text.

	Neighborhood 04											
	All races	White	Negro	Persons of Spanish language	All races	White	Negro	Persons of Spanish language	All races	White	Negro	Persons of Spanish language
Kansas City, Missouri												
PERSONS 16 TO 21 YEARS OLD NOT IN SCHOOL—Con.												
Income Below Poverty Level												
Male												
Not high school graduate	252	18	234	—								
Employed or in Armed Forces	94	—	94	—								
Unemployed	49	—	49	—								
Not in labor force	15	—	15	—								
High school graduate	30	—	30	—								
Employed or in Armed Forces	158	18	140	—								
Unemployed	81	9	72	—								
Not in labor force	5	—	5	—								
	72	9	63	—								
Female												
Not high school graduate	216	20	196	—								
Employed or in Armed Forces	116	12	104	—								
Unemployed	38	12	26	—								
Not in labor force	9	—	9	—								
High school graduate	69	—	69	—								
Employed or in Armed Forces	100	8	92	—								
Unemployed	43	8	35	—								
Not in labor force	6	—	6	—								
	51	—	51	—								
MARRIED COUPLES AND CHILDREN												
All Income Levels												
Married couples												
With own household	4 362	976	3 381	142								
Without own household	4 266	955	3 306	142								
	96	21	75	—								
With own children under 18 yr	2 408	355	2 053	106								
With husband under 45 years	1 279	223	1 056	81								
With own children under 18 yr	2 262	367	1 890	67								
	1 696	244	1 452	61								
Related child, under 18 yr	12 509	1 021	11 474	330								
Living with both parents	6 929	790	6 125	295								
Percent living with both parents	55.4	77.4	53.4	89.4								
Living with mother only	4 699	201	4 498	30								
Living with father only	380	14	366	—								
Living with neither parent	501	16	485	5								
Income Below Poverty Level												
Related child, under 18 yr	4 614	175	4 433	83								
Living with both parents	1 487	112	1 369	64								
Percent living with both parents	32.2	64.0	30.9	...								
Living with mother only	2 812	58	2 754	14								
Living with father only	174	—	174	—								
Living with neither parent	141	5	136	5								
FERTILITY BY AGE OF WOMAN												
All Income Levels												
Women ever married:												
15 to 24 years	1 095	220	875	25								
25 to 34 years	1 450	185	1 259	33								
35 to 44 years	1 860	240	1 605	47								
Children ever born per 1,000 women ever married:												
15 to 24 years	1 392	1 195	1 441	...								
25 to 34 years	3 015	2 259	3 141	...								
35 to 44 years	4 071	2 600	4 264	...								
Income Below Poverty Level												
Women ever married:												
15 to 24 years	268	49	219	11								
25 to 34 years	409	29	380	—								
35 to 44 years	433	26	407	7								
Children ever born per 1,000 women ever married:												
15 to 24 years	1 799	...	1 795	...								
25 to 34 years	4 193	...	4 345	...								
35 to 44 years	5 266	...	5 450	...								

Table A-3. Employment Characteristics of the Population by Residence in Census Tracts With a Poverty Rate of 20 Percent or More: 1970

[Excludes inmates of institutions, members of Armed Forces living in barracks, college students living in dormitories, and unrelated individuals under 14 years. Data based on 15-percent sample, see text. For minimum base for derived figures (percent, median, etc.) and meaning of symbols, see text.]

Kansas City, Missouri	Neighborhood 04											
	All races	White	Negro	Persons of Spanish language	All races	White	Negro	Persons of Spanish language	All races	White	Negro	Persons of Spanish language
EMPLOYMENT STATUS												
All Income Levels												
Male												
Total, 16 years old and over	8 847	2 075	6 767	244								
Armed Forces	70	-	70	-								
Civilian labor force	6 539	1 397	5 137	199								
Employed	6 160	1 371	4 784	199								
At work	5 801	1 328	4 468	185								
Full time	4 931	1 131	3 795	172								
With a job but not at work	359	43	316	14								
Unemployed	379	26	353	-								
Percent unemployed	5.8	1.9	6.9	-								
Not in labor force	2 238	678	1 560	45								
Enrolled in school	661	136	525	6								
Other	1 577	542	1 035	39								
65 years old and over	818	385	433	23								
16 to 24 years old	2 226	367	1 859	64								
Employed	1 276	247	1 029	42								
Unemployed	171	-	171	-								
Not in labor force	759	120	639	22								
25 to 64 years old	5 493	1 181	4 307	157								
Employed	4 626	1 002	3 619	157								
Unemployed	183	13	170	-								
Not in labor force	634	166	468	-								
Family head, 25 to 64 years old	3 556	694	2 857	127								
Employed	3 103	642	2 456	127								
Unemployed	127	13	114	-								
Not in labor force	287	39	248	-								
Female												
Total, 16 years old and over	10 855	2 524	8 273	202								
Civilian labor force	5 722	1 100	4 568	139								
Employed	5 350	1 048	4 263	139								
At work	5 169	991	4 139	132								
Full time	3 964	825	3 100	119								
With a job but not at work	181	57	124	7								
Unemployed	372	52	305	-								
Percent unemployed	6.5	4.7	6.7	-								
Not in civilian labor force	5 133	1 424	3 705	63								
Enrolled in school	775	60	715	-								
Other	4 358	1 364	2 990	63								
65 years old and over	1 388	738	650	7								
With own children under 6 years old	2 053	255	1 798	66								
Percent in civilian labor force	62.8	55.7	63.8	-								
With own children 6 to 17 years old	2 967	324	2 628	84								
Percent in civilian labor force	62.3	49.7	63.7	-								
16 to 24 years old	2 556	347	2 205	79								
Employed	1 161	191	970	54								
Unemployed	119	20	99	-								
Not in civilian labor force	1 276	136	1 136	25								
25 to 64 years old	6 628	1 316	5 264	116								
Employed	3 948	759	3 156	85								
Unemployed	236	25	196	-								
Not in civilian labor force	2 444	532	1 912	31								
Family head, 25 to 64 years old	1 472	166	1 306	15								
Employed	999	128	871	-								
Unemployed	82	-	82	-								
Not in civilian labor force	391	38	353	15								
Wife of head, 25 to 64 years old	3 251	577	2 653	90								
Employed	1 723	278	1 439	78								
Unemployed	109	15	79	-								
Not in civilian labor force	1 419	284	1 135	12								
Income Below Poverty Level												
Male												
Total, 16 years old and over	1 878	380	1 498	23								
Armed Forces	7	-	7	-								
Civilian labor force	832	75	757	23								
Employed	749	75	674	23								
At work	714	75	639	23								
Full time	556	75	481	23								
Unemployed	83	-	83	-								
Percent unemployed	10.0	-	11.0	-								
Not in labor force	1 039	305	734	-								
Enrolled in school	256	63	193	-								
Other	783	242	541	-								
65 years old and over	330	154	176	-								

*Includes members of Armed Forces not living in barracks and not shown separately.

Table A-3. Employment Characteristics of the Population by Residence in Census Tracts With a Poverty Rate of 20 Percent or More: 1970—Continued

[Excludes inmates of institutions, members of Armed Forces living in barracks, college students living in dormitories, and unrelated individuals under 14 years. Data based on 15 percent sample, see text. For minimum base for derived figures (percent, median, etc.) and meaning of symbols, see text]

Kansas City, Missouri	Neighborhood 04											
	All races	White	Negro	Persons of Spanish language	All races	White	Negro	Persons of Spanish language	All races	White	Negro	Persons of Spanish language
EMPLOYMENT STATUS—Continued												
Income Below Poverty Level—Con.												
Male—Continued												
16 to 24 years old ¹	584	50	534	—								
Employed	258	20	238	—								
Unemployed	20	—	20	—								
Not in labor force	299	30	269	—								
25 to 64 years old ¹	920	176	744	23								
Employed	459	55	404	23								
Unemployed	63	—	63	—								
Not in labor force	398	121	277	—								
Family head, 25 to 64 years old ¹	499	42	457	16								
Employed	288	33	255	16								
Unemployed	48	—	48	—								
Not in labor force	163	9	154	—								
Female												
Total, 16 years old and over	2 992	636	2 356	35								
Civilian labor force	1 023	125	898	24								
Employed	897	117	780	24								
At work	847	106	741	24								
Full time	612	93	519	11								
With a job but not at work	50	11	39	—								
Unemployed	126	8	118	—								
Percent unemployed	12.3	—	13.1	—								
Not in civilian labor force	1 969	511	1 458	11								
Enrolled in school	235	27	208	—								
Other	1 734	484	1 250	11								
65 years old and over	544	291	253	—								
With own children under 6 years old	680	45	635	18								
Percent in civilian labor force	50.9	—	52.0	—								
With own children 6 to 17 years old	877	28	849	7								
Percent in civilian labor force	45.2	—	45.9	—								
16 to 24 years old	703	94	609	24								
Employed	267	64	203	24								
Unemployed	58	8	50	—								
Not in civilian labor force	378	22	356	—								
25 to 64 years old	1 655	220	1 435	11								
Employed	552	34	518	—								
Unemployed	68	—	68	—								
Not in civilian labor force	1 035	186	849	11								
Family head, 25 to 64 years old	608	39	569	—								
Employed	299	23	276	—								
Unemployed	42	—	42	—								
Not in civilian labor force	267	16	251	—								
Wife of head, 25 to 64 years old	476	39	437	7								
Employed	107	—	107	—								
Unemployed	18	—	18	—								
Not in civilian labor force	351	39	312	7								
PLACE OF WORK												
All workers ²	11 157	2 327	8 786	317								
Inside SMSA of residence	8 358	1 920	6 394	263								
In county of residence	7 348	1 734	5 570	229								
In central city	6 731	1 601	5 086	195								
Outside county of residence	1 010	186	824	34								
In central city	107	31	76	—								
Outside SMSA of residence	186	60	126	9								
Workers below poverty level ²	1 593	181	1 412	47								
Inside SMSA of residence	1 051	112	939	29								
In county of residence	939	112	827	29								
In central city	870	104	766	29								
Outside county of residence	112	—	112	—								
In central city	6	—	6	—								
Outside SMSA of residence	24	18	6	—								
MEANS OF TRANSPORTATION TO WORK												
All workers	11 157	2 327	8 786	317								
Private automobile, driver	5 390	1 049	4 335	100								
Private automobile, passenger	2 083	335	1 748	108								
Bus, streetcar, or subway	2 897	654	2 211	89								
Walked only	379	157	222	20								
Worked at home	134	72	62	—								
Other means	274	60	208	—								
Workers below poverty level	1 593	181	1 412	47								
Private automobile, driver	615	23	592	15								
Private automobile, passenger	348	32	316	19								
Bus, streetcar, or subway	467	77	390	—								
Walked only	81	37	44	13								
Worked at home	45	12	33	—								
Other means	37	—	37	—								

¹Includes members of Armed Forces not living in barracks and not shown separately.

²Includes "Place of work not reported" not shown separately.

Table A-4. Selected Occupations of Employed Persons by Residence in Census Tracts With a Poverty Rate of 20 Percent or More: 1970.

[Excludes inmates of institutions, members of Armed Forces living in barracks, college students living in dormitories, and unrelated individuals under 14 years. Data based on 15-percent sample, see text. For minimum base for derived figures (percent, median, etc.) and meaning of symbols, see text.]

Kansas City, Missouri

	Neighborhood 04											
	All races	White	Negro	Persons of Spanish language	All races	White	Negro	Persons of Spanish language	All races	White	Negro	Persons of Spanish language
ALL INCOME LEVELS												
Total employed, 16 yr. & over¹	11 510	2 419	9 047	338								
Prof., tech., and kindred workers	868	206	656	24								
Health workers, except practitioners	267	51	210	—								
Teachers, elem. and secondary	147	31	116	13								
Managers and admin., exc. farm	321	69	252	—								
Self-employed	76	29	47	—								
Sales workers	340	146	194	—								
Retail trade	248	94	154	—								
Clerical and kindred workers	1 744	510	1 234	94								
Postal clerks and mail carriers	176	33	143	—								
Shipping, receiving, and stock clerks	196	89	107	49								
Bkksrs., cashiers, & bank tellers	142	75	67	5								
Craftsmen and kindred workers	1 019	393	626	49								
Construction craftsmen	233	76	157	—								
Mechanics and repairmen	231	116	115	8								
Operatives, except transport	2 089	413	1 670	70								
Assemblers	401	83	318	—								
Checkers, exam., & inspectors; mfg.	55	13	42	—								
Pkrs. & wrappers, inc. meat & prod.	108	13	95	—								
Sewers, sitchers, & textile oper.	91	17	68	—								
Transport equipment operatives	610	94	516	9								
Truck drivers	221	35	186	—								
Laborers, except farm	1 299	162	1 132	9								
Construction	187	40	147	—								
Freight, material, and stock handlers	311	27	279	—								
Service workers, exc. private hshld. ²	2 641	386	2 255	83								
Cleaning service workers	736	86	650	22								
Food service workers	480	125	355	28								
Health service workers	373	60	313	—								
Personal service workers	152	11	141	—								
Protective service workers	114	35	79	—								
Private household workers	504	33	444	—								
Female employed, 16 yr. & over¹	5 350	1 048	4 263	139								
Prof., tech., and kindred workers	628	131	491	19								
Health workers, except practitioners	243	44	193	—								
Teachers, elem. and secondary	125	31	94	13								
Managers and admin., exc. farm	182	40	142	—								
Self-employed	34	13	21	—								
Sales workers	187	70	117	—								
Retail trade	165	57	108	—								
Clerical and kindred workers	1 150	329	821	50								
Bkksrs., cashiers, & bank tellers	78	48	30	5								
Secretaries, steno., & typists	211	71	140	5								
Craftsmen and kindred workers	95	10	85	10								
Operatives, except transport	943	204	733	39								
Laundry & dry cleaning operatives ³	107	13	94	33								
Assemblers	141	31	110	—								
Pkrs. & wrappers, inc. meat & prod.	64	6	58	—								
Sewers, sitchers, & textile oper.	81	17	58	—								
Transport equipment operatives	19	—	19	—								
Laborers, except farm	179	15	164	—								
Service workers, exc. private hshld. ⁴	1 462	209	1 253	21								
Cleaning service workers	309	15	294	—								
Food service workers	312	95	217	21								
Health service workers	340	51	289	—								
Personal service workers	90	6	84	—								
Private household workers	469	33	409	—								
INCOME BELOW POVERTY LEVEL												
Total employed, 16 yr. & over¹	1 646	192	1 454	47								
Prof., tech., and kindred workers	70	25	45	13								
Managers and admin., exc. farm	70	6	64	—								
Sales workers	52	6	46	—								
Clerical and kindred workers	166	43	123	7								
Craftsmen and kindred workers	56	—	56	—								
Operatives, except transport	329	54	275	19								
Transport equipment operatives	75	6	69	—								
Laborers, except farm	178	11	167	—								
Service workers, exc. private hshld	488	41	447	8								
Private household workers	133	—	133	—								
Female employed, 16 yr. & over¹	897	117	780	24								
Prof., tech., and kindred workers	51	13	38	13								
Managers and admin., exc. farm	64	6	58	—								
Sales workers	52	6	46	—								
Clerical and kindred workers	110	43	67	—								
Craftsmen and kindred workers	14	—	14	—								
Operatives, except transport	136	22	114	11								
Transport equipment operatives	7	—	7	—								
Laborers, except farm	13	—	13	—								
Service workers, exc. private hshld	320	27	293	—								
Private household workers	123	—	123	—								

¹Includes "farm workers" not shown separately. ²Allocated cases included in total but not in distribution. ³Includes "clothing ironers and pressers." ⁴"Protective service workers" and allocated cases included in total but not in distribution.

Table A-5. Income Characteristics in 1969 of Families and Unrelated Individuals by Residence in Census Tracts With a Poverty Rate of 20 Percent or More: 1970.

[Excludes inmates of institutions, members of Armed Forces living in barracks, college students living in dormitories, and unrelated individuals under 14 years. Data based on 15-percent sample, see text. For minimum base for derived figures (percent, median, etc.) and meaning of symbols, see text.]

Kansas City, Missouri

	Neighborhood 04				Persons of Spanish language	All races	White	Negro	Persons of Spanish language	All races	White	Negro	Persons of Spanish language
	All races	White	Negro	Persons of Spanish language									
INCOME OF FAMILIES AND UNRELATED INDIVIDUALS													
All families													
Less than \$2,000	6 457	1 299	5 147	157									
\$2,000 to \$3,999	819	129	690	8									
\$4,000 to \$5,999	874	161	713	-									
\$6,000 to \$7,999	1 249	233	1 010	36									
\$8,000 to \$9,999	1 025	232	793	32									
\$10,000 to \$11,999	912	222	685	39									
\$12,000 to \$14,999	562	104	458	5									
\$15,000 to \$19,999	544	111	433	6									
\$20,000 to \$24,999	303	79	224	31									
\$25,000 or more	89	18	71	-									
Median family income	80	10	70	-									
Mean family income	\$6 559	\$7 091	\$6 405	\$8 128									
	\$7 412	\$7 770	\$7 323	\$9 618									
Families with female head													
Less than \$1,000	1 840	260	1 574	15									
\$1,000 to \$1,999	261	17	244	-									
\$2,000 to \$2,999	198	41	157	-									
\$3,000 to \$3,999	130	16	114	-									
\$4,000 to \$5,999	285	26	259	-									
\$6,000 to \$7,999	412	67	339	15									
\$8,000 to \$9,999	201	42	159	-									
\$10,000 to \$14,999	167	19	148	-									
\$15,000 and over	135	32	103	-									
Median family income	51	-	51	-									
Mean family income	\$4 223	\$4 896	\$4 077	...									
	\$4 907	\$5 352	\$4 830	...									
All unrelated individuals													
Less than \$1,000	4 338	1 796	2 515	71									
\$1,000 to \$1,999	875	275	600	11									
\$2,000 to \$2,999	1 041	554	487	30									
\$3,000 to \$3,999	527	196	304	-									
\$4,000 to \$5,999	608	266	342	-									
\$6,000 to \$7,999	647	279	368	14									
\$8,000 to \$9,999	490	167	323	16									
\$10,000 to \$14,999	39	6	33	-									
\$15,000 and over	92	34	58	-									
Median income	19	19	58	-									
Mean income	\$2 480	\$2 352	\$2 561	...									
	\$3 052	\$3 087	\$3 033	...									
TYPE OF INCOME FOR FAMILIES AND UNRELATED INDIVIDUALS													
All families													
With earnings	6 457	1 299	5 147	157									
Mean earnings	5 776	1 119	4 646	157									
Percent below poverty level	\$7 503	\$7 941	\$7 401	\$8 942									
Head 65 years and over	17.5	7.8	19.9	10.2									
Mean earnings	499	199	294	-									
With Social Security income	\$6 534	\$5 949	\$6 980	-									
Mean Social Security income	1 219	408	805	24									
Percent below poverty level	\$1 602	\$1 632	\$1 586	...									
Head 65 years and over	23.4	12.0	29.3	-									
Mean Social Security income	597	289	302	-									
With public assistance income	\$1 998	\$1 824	\$2 170	-									
Mean public assistance income	803	82	721	-									
Percent below poverty level	\$1 028	...	\$1 044	-									
Head 65 years and over	45.6	...	49.5	-									
Mean public assistance income	162	46	116	-									
With other income	\$989	-									
Mean other income	1 110	401	709	73									
Percent below poverty level	\$1 576	\$1 170	\$1 805	...									
Head 65 years and over	10.7	2.2	15.5	-									
Mean other income	310	166	144	-									
	\$1 351	\$1 592	\$1 075	-									
Families with female head													
With earnings	1 840	260	1 574	15									
Mean earnings	1 527	208	1 313	15									
Percent below poverty level	\$5 004	\$5 257	\$4 968	...									
Head 65 years and over	31.4	17.8	33.7	-									
Mean earnings	147	58	83	-									
With Social Security income	\$5 240	-									
Mean Social Security income	382	107	269	15									
Percent below poverty level	\$1 422	...	\$1 405	...									
Head 65 years and over	32.5	...	38.7	-									
Mean Social Security income	139	63	70	-									
With public assistance income	\$1 417	-									
Mean public assistance income	435	37	398	-									
Percent below poverty level	\$1 193	...	\$1 195	-									
Head 65 years and over	58.2	...	61.3	-									
Mean public assistance income	50	23	27	-									
With other income	-									
Mean other income	285	84	201	15									
Percent below poverty level	\$1 142	...	\$1 122	...									
Head 65 years and over	24.6	...	30.3	-									
Mean other income	52	39	13	-									
	-									

Table A-5. **Income Characteristics in 1969 of Families and Unrelated Individuals by Residence in Census Tracts With a Poverty Rate of 20 Percent or More: 1970-Continued**

[Excludes inmates of institutions, members of Armed Forces living in barracks, college students living in dormitories, and unrelated individuals under 14 years. Data based on 15-percent sample, see text. For minimum base for derived figures (percent, median, etc.) and meaning of symbols, see text]

Kansas City, Missouri	Neighborhood 04				Persons of Spanish language	All races	White	Negro	Persons of Spanish language	All races	White	Negro	Persons of Spanish language
	All races	White	Negro	Persons of Spanish language									
TYPE OF INCOME FOR FAMILIES AND UNRELATED INDIVIDUALS - Continued													
All unrelated individuals	4 338	1 796	2 515	71									
With earnings	2 809	980	1 802	67									
Mean earnings	\$3 944	\$4 233	\$3 808	...									
Percent below poverty level	18.3	12.1	22.0	...									
65 years and over	301	169	132	17									
Mean earnings	\$3 088	\$3 136	\$3 027	...									
Percent below poverty level	12.3	3.6	23.5	...									
With Social Security income	1 164	682	482	21									
Mean Social Security income	\$965	\$1 036	\$863	...									
Percent below poverty level	64.8	61.0	70.1	...									
65 years and over	915	569	346	17									
Mean Social Security income	\$985	\$1 032	\$906	...									
With public assistance income	387	116	271	...									
Mean public assistance income	\$754	...	\$726	...									
Percent below poverty level	79.8	...	83.8	...									
65 years old and over	280	104	176	...									
Mean public assistance income	\$749	...	\$709	...									
With other income	758	531	227	...									
Mean other income	\$984	\$1 118	\$669	...									
Percent below poverty level	36.8	33.3	44.9	...									
65 years old and over	396	310	86	...									
Mean other income	\$1 100	\$1 240									
WEEKS WORKED													
All Income Levels													
Male family heads	4 617	1 039	3 573	142									
Worked in 1969	3 992	859	3 128	142									
50 to 52 weeks	2 486	555	1 926	51									
40 to 49 weeks	936	178	758	62									
27 to 39 weeks	279	61	218	15									
26 weeks or less	291	65	226	14									
Did not work in 1969	625	180	445	...									
Female family heads	1 840	260	1 574	15									
Worked in 1969	1 352	168	1 178	15									
50 to 52 weeks	779	113	660	...									
40 to 49 weeks	249	7	242	...									
27 to 39 weeks	159	11	148	...									
26 weeks or less	165	37	128	15									
Did not work in 1969	488	92	396	...									
Income Below Poverty Level													
Male family heads	726	90	636	16									
Worked in 1969	456	44	412	16									
50 to 52 weeks	184	17	167	...									
Did not work in 1969	270	46	224	...									
Female family heads	768	74	694	...									
Worked in 1969	411	30	381	...									
50 to 52 weeks	179	14	165	...									
Did not work in 1969	357	44	313	...									
FAMILIES BY NUMBER OF EARNERS													
No earners	681	180	501	...									
Mean family income	\$1 993	\$2 902	\$1 666	...									
Percent below poverty level	70.9	42.8	81.0	...									
1 earner	2 237	555	1 676	27									
Mean family income	\$5 413	\$6 185	\$5 155	...									
Percent below poverty level	29.5	11.4	35.6	...									
2 earners	2 480	471	2 004	93									
Mean family income	\$8 418	\$9 686	\$8 121	...									
Percent below poverty level	11.6	5.1	13.2	...									
3 or more earners	1 059	93	966	37									
Mean family income	\$12 767	...	\$12 364	...									
Percent below poverty level	5.9	...	6.5	...									
SIZE OF FAMILY													
2 persons	2 259	788	1 460	51									
Mean family income	\$6 561	\$6 934	\$6 358	...									
Percent below poverty level	15.7	11.3	18.2	...									
3 persons	1 070	142	928	5									
Mean family income	\$6 779	\$6 693	\$6 792	...									
Percent below poverty level	20.0	19.7	20.0	...									
4 persons	871	148	723	29									
Mean family income	\$7 137	\$8 055	\$6 949	...									
Percent below poverty level	24.1	18.9	25.2	...									
5 and 6 persons	1 146	153	993	6									
Mean family income	\$8 523	\$10 328	\$8 245	...									
Percent below poverty level	25.2	7.2	28.0	...									
7 persons or more	1 111	68	1 043	66									
Mean family income	\$8 823	...	\$8 529	...									
Percent below poverty level	38.3	...	40.1	...									

Table A-6. Persons by Family Status and Age and Families by Income Deficit by Residence in Census Tracts With a Poverty Rate of 20 Percent or More: 1970

[Excludes inmates of institutions, members of Armed Forces living in barracks, college students living in dormitories, and unrelated individuals under 14 years. Data based on 15 percent sample, see text. For minimum base for derived figures (percent, median, etc.) and meaning of symbols, see text]

Kansas City, Missouri

	Neighborhood 04				Persons of Spanish language							
	All races	White	Negro			All races	White	Negro	Persons of Spanish language	All races	White	Negro
ALL INCOME LEVELS												
All Persons												
Total	31 062	5 566	25 423	754								
In families	26 724	3 770	22 908	683								
Head	6 457	1 299	5 147	157								
With related children under 18	4 049	491	3 558	121								
Mean number of related children under 18	2.95	2.32	3.03	...								
With related children under 6	2 173	282	1 891	81								
14 to 24 years	637	98	539	15								
25 to 54 years	4 197	667	3 525	125								
55 to 64 years	831	193	638	17								
65 years and over	792	341	445	-								
Wife of head	4 268	944	3 303	122								
14 to 24 years	644	156	488	25								
25 to 54 years	2 704	440	2 243	83								
55 to 64 years	547	137	410	7								
65 years and over	373	211	162	7								
Other family members	15 999	1 527	14 458	404								
Under 3 years	1 673	184	1 483	36								
3 to 5 years	2 019	176	1 843	46								
6 to 13 years	6 123	470	5 649	166								
14 to 17 years	2 694	191	2 499	82								
18 to 21 years	1 385	133	1 252	50								
22 to 54 years	1 409	192	1 217	18								
55 to 64 years	263	78	185	-								
65 years and over	433	103	330	6								
Mean size of family	4.14	2.90	4.45	4.35								
Unrelated individuals	4 338	1 796	2 515	71								
14 to 24 years	597	178	419	13								
25 to 54 years	1 802	579	1 223	41								
55 to 64 years	738	306	405	17								
65 years and over	1 201	733	468	-								
Persons in Families With Female Head and Female Unrelated Individuals												
Total	10 297	1 716	8 548	80								
In families	7 946	665	7 275	56								
Head	1 840	260	1 574	15								
With related children under 18	1 414	130	1 284	15								
Mean number of related children under 18	3.14	...	3.28	...								
With related children under 6	702	53	649	-								
14 to 24 years	168	7	161	-								
25 to 54 years	1 270	138	1 132	15								
55 to 64 years	202	28	174	-								
65 years and over	200	87	107	-								
Other family members	6 106	405	5 701	41								
Under 3 years	485	27	458	-								
3 to 5 years	799	44	755	-								
6 to 13 years	2 412	98	2 314	19								
14 to 17 years	1 002	49	953	16								
18 to 21 years	462	4	458	-								
22 to 54 years	662	79	583	-								
55 to 64 years	117	41	76	-								
65 years and over	167	63	104	6								
Mean size of family	4.32	2.56	4.62	...								
Female unrelated individuals	2 351	1 051	1 273	24								
14 to 24 years	318	91	227	13								
25 to 54 years	738	235	503	11								
55 to 64 years	512	247	238	-								
65 years and over	783	478	305	-								

Table A-6. Persons by Family Status and Age and Families by Income Deficit by Residence in Census Tracts With a Poverty Rate of 20 Percent or More: 1970—Continued

[Excludes inmates of institutions, members of Armed Forces living in barracks, college students living in dormitories, and unrelated individuals under 14 years. Data based on 15-percent sample, see text. For minimum base for derived figures (percent, median, etc.) and meaning of symbols, see text.]

Kansas City, Missouri	Neighborhood 04											
	All races	White	Negro	Persons of Spanish language	All races	White	Negro	Persons of Spanish language	All races	White	Negro	Persons of Spanish language
INCOME BELOW POVERTY LEVEL												
All Persons												
Total	9 174	1 199	7 969	141								
Percent below poverty level	29.5	21.5	31.3	18.7								
In families	7 393	464	6 923	117								
Head	1 494	164	1 330	16								
Percent below poverty level	23.1	12.6	25.8	10.2								
With related children under 18	1 181	82	1 099	16								
Mean number of related children under 18	3.72	...	3.80	...								
With related children under 6	709	56	653	16								
14 to 24 years	189	18	171	—								
25 to 54 years	973	72	901	16								
55 to 64 years	134	9	125	—								
65 years and over	198	65	133	—								
Wife of head	645	73	572	18								
14 to 24 years	113	14	99	11								
25 to 54 years	349	22	327	7								
55 to 64 years	127	17	110	—								
65 years and over	56	20	36	—								
Other family members	5 254	227	5 021	83								
Under 3 years	507	57	444	20								
3 to 5 years	790	44	746	6								
6 to 13 years	2 522	67	2 455	50								
14 to 17 years	795	7	788	7								
18 to 21 years	280	—	280	—								
22 to 54 years	237	37	200	—								
55 to 64 years	71	15	56	—								
65 years and over	52	—	52	—								
Mean size of family	4.95	2.83	5.21	...								
Unrelated individuals	1 781	735	1 046	24								
Percent below poverty level	41.1	40.9	41.6	...								
14 to 24 years	362	111	251	13								
25 to 54 years	465	126	339	11								
55 to 64 years	252	107	145	—								
65 years and over	702	391	311	—								
Persons in Families With Female Head and Female Unrelated Individuals												
Total	4 974	643	4 331	36								
Percent below poverty level	48.3	37.5	50.7	...								
In families	3 890	176	3 714	19								
Head	768	74	694	—								
Percent below poverty level	41.7	28.5	44.1	—								
With related children under 18	675	38	637	—								
Mean number of related children under 18	3.92	...	4.04	—								
With related children under 6	405	24	381	—								
14 to 24 years	93	7	86	—								
25 to 54 years	574	39	535	—								
55 to 64 years	34	—	34	—								
65 years and over	67	28	39	—								
Other family members	3 122	102	3 020	19								
Under 3 years	248	24	224	—								
3 to 5 years	513	24	489	—								
6 to 13 years	1 545	15	1 530	19								
14 to 17 years	483	—	483	—								
18 to 21 years	112	—	112	—								
22 to 54 years	152	24	128	—								
55 to 64 years	52	15	37	—								
65 years and over	17	—	17	—								
Mean size of family	5.07	...	5.35	...								
Female unrelated individuals	1 084	467	617	17								
Percent below poverty level	46.1	44.4	48.5	...								
14 to 24 years	208	73	135	13								
25 to 54 years	232	33	199	4								
55 to 64 years	166	87	79	—								
65 years and over	478	274	204	—								

Table A-6. Persons by Family Status and Age and Families by Income Deficit by Residence in Census Tracts With a Poverty Rate of 20 Percent or More: 1970—Continued

(Excludes inmates of institutions, members of Armed Forces living in barracks, college students living in dormitories, and unrelated individuals under 14 years. Data based on 15 percent sample, see text. For minimum base for derived figures (percent, median, etc.) and meaning of symbols, see text)

Kansas City, Missouri

	Neighborhood 04				Persons of Spanish language	All races	White	Negro	Persons of Spanish language	All races	White	Negro	Persons of Spanish language
	All races	White	Negro	Persons of Spanish language									
RATIO OF INCOME TO POVERTY LEVEL													
Families													
Percent with income:													
Less than .50 of poverty level	10.4	4.3	11.9	5.1									
.50 to .74	7.0	7.1	7.0	—									
.75 to .99	5.8	1.2	6.9	5.1									
1.00 to 1.24	8.0	3.0	9.3	8.9									
1.25 to 1.49	9.5	7.6	9.9	8.3									
1.50 to 1.99	14.3	19.7	13.0	10.2									
2.00 to 2.99	21.0	21.0	20.9	22.3									
3.00 or more	24.1	36.0	21.0	40.1									
Unrelated Individuals													
Percent with income:													
Less than .50 of poverty level	19.2	14.2	23.0	...									
.50 to .74	11.9	16.9	8.5	...									
.75 to .99	9.9	9.8	10.1	...									
1.00 to 1.24	8.2	7.4	8.8	...									
1.25 to 1.49	4.8	4.0	4.5	...									
1.50 to 1.99	15.4	19.2	12.9	...									
2.00 to 2.99	14.4	13.0	15.3	...									
3.00 or more	16.2	15.5	16.8	...									
DIFFERENCE BETWEEN FAMILY INCOME AND POVERTY LEVEL													
Families below poverty level													
\$1 to \$249	1 494	164	1 330	16									
\$250 to \$499	94	—	94	—									
\$500 to \$999	87	8	79	—									
\$1,000 to \$1,999	239	62	177	8									
\$2,000 and over	455	61	394	—									
Median income deficit	619	33	586	8									
Mean income deficit	\$1 719	\$1 197	\$1 799	...									
	\$2 028	\$1 384	\$2 107	...									
Families above poverty level													
\$0 to \$249	4 963	1 135	3 817	141									
\$250 to \$499	131	11	120	—									
\$500 to \$999	117	17	100	—									
\$1,000 to \$1,999	336	44	292	14									
\$2,000 and over	642	151	491	—									
Median income surplus	3 737	912	2 814	127									
Mean income surplus	\$2000 +	\$2000 +	\$2000 +	\$2000 +									
	\$5 430	\$5 606	\$5 380	\$5 988									

Table A-7. Selected Housing Characteristics of Housing Units by Location in Census Tracts With a Poverty Rate of 20 Percent or More: 1970

[Excludes inmates of institutions, members of Armed Forces living in barracks, college students living in dormitories, and unrelated individuals under 14 years. Data based on 15-percent sample, see text. For minimum base for derived figures (percent, median, etc.) and meaning of symbols, see text]

Kansas City, Missouri	Neighborhood 04											
	All races	White	Negro	Persons of Spanish language	All races	White	Negro	Persons of Spanish language	All races	White	Negro	Persons of Spanish language
TENURE AND VACANCY STATUS												
Total, all units	12 183	2 758	7 252	161								
Occupied	10 042	2 758	7 252	161								
Population in units	30 446	5 389	25 007	658								
Population per unit	3.03	1.95	3.45	4.09								
Owner occupied	4 552	1 048	3 495	99								
Population per unit	3.78	2.41	4.20	...								
1-person households	856	355	501	6								
65 years and over	368	253	115	-								
Renter occupied	5 490	1 710	3 757	62								
Population per unit	2.41	1.67	2.75	...								
1-person households	2 352	1 070	1 268	25								
65 years and over	749	492	257	-								
Available vacant year-round	1 907	-	-	-								
For rent	1 661	-	-	-								
For sale only	246	-	-	-								
Other vacant	234	-	-	-								
YEAR STRUCTURE BUILT												
Owner occupied	4 552	1 048	3 495	99								
1960 to March 1970	3	-	3	-								
1950 to 1959	165	7	158	-								
1940 to 1949	473	79	394	-								
1939 or earlier	3 911	962	2 940	99								
Renter occupied	5 490	1 710	3 757	62								
1960 to March 1970	53	8	45	-								
1950 to 1959	225	53	172	-								
1940 to 1949	776	207	569	12								
1939 or earlier	4 436	1 442	2 971	50								
Owner occ. below poverty level	1 208	257	951	14								
1960 to March 1970	-	-	-	-								
1950 to 1959	27	-	27	-								
1940 to 1949	124	32	92	-								
1939 or earlier	1 057	225	832	14								
Renter occ. below poverty level	1 739	548	1 191	19								
1960 to March 1970	13	-	13	-								
1950 to 1959	68	6	62	-								
1940 to 1949	272	77	195	-								
1939 or earlier	1 386	465	921	19								
UNITS IN STRUCTURE												
All occupied units	10 042	2 758	7 252	161								
1	5 037	969	4 068	92								
2 to 4	2 050	590	1 442	18								
5 to 9	1 089	269	806	6								
10 to 49	1 163	401	762	29								
50 or more	697	523	174	16								
Mobile home or trailer	6	6	-	-								
YEAR HEAD MOVED INTO UNIT												
All occupied units	10 042	2 758	7 252	161								
1968 to March 1970	3 659	955	2 695	67								
1965 to 1967	1 837	426	1 411	12								
1960 to 1964	2 030	451	1 556	43								
1959 or earlier	2 516	926	1 590	39								
Occ. units below poverty level	2 947	805	2 142	33								
1968 to March 1970	1 115	271	844	19								
1965 to 1967	610	128	482	-								
1960 to 1964	526	130	396	8								
1959 or earlier	696	276	420	6								
SELECTED EQUIPMENT												
All occupied units	10 042	2 758	7 252	161								
Percent with air conditioning	20.5	25.2	18.9	24.8								
Percent with automobile	59.8	55.1	61.8	75.8								
Percent with telephone	75.1	76.8	74.3	49.7								
Percent with all plumbing facilities	95.3	92.6	96.4	93.2								
Occ. units below poverty level	2 947	805	2 142	33								
Percent with air conditioning	13.5	16.9	12.2	-								
Percent with automobile	48.0	31.1	54.3	...								
Percent with telephone	70.2	69.8	70.4	-								
Percent with all plumbing facilities	93.8	88.9	95.6	...								
PERSONS PER ROOM												
Owner occupied	4 552	1 048	3 495	99								
1.00 or fewer persons per room	4 032	1 027	2 996	66								
1.01 to 1.50 persons per room	478	21	457	33								
1.51 or more persons per room	42	-	42	-								
Owner occ. below poverty level	1 208	257	951	14								
1.00 or fewer persons per room	1 003	249	754	6								
1.01 to 1.50 persons per room	182	8	174	8								
1.51 or more persons per room	23	-	23	-								

Table A-7. Selected Housing Characteristics of Housing Units by Location in Census Tracts With a Poverty Rate of 20 Percent or More: 1970—Continued

[Excludes inmates of institutions, members of Armed Forces living in barracks, college students living in dormitories, and unrelated individuals under 14 years. Data based on 15-percent sample, see text. For minimum base for derived figures (percent, median, etc.) and meaning of symbols, see text]

Kansas City, Missouri

	Neighborhood 04				Persons of Spanish language	All races	White	Negro	Persons of Spanish language	All races	White	Negro	Persons of Spanish language
	All races	White	Negro	Persons of Spanish language									
PERSONS PER ROOM—Con.													
Renter occupied													
1.00 or fewer persons per room	5 490	1 710	3 757	62									
1.01 to 1.50 persons per room	4 973	1 614	3 336	43									
1.51 or more persons per room	405	67	338	19									
	112	29	83	—									
Renter occ. below poverty level													
1.00 or fewer persons per room	1 739	548	1 191	19									
1.01 to 1.50 persons per room	1 517	529	988	8									
1.51 or more persons per room	190	19	171	11									
	32	—	32	—									
VALUE OF PROPERTY													
Specified owner occupied ¹													
Less than \$5,000	3 828	851	2 977	92									
\$5,000 to \$9,999	322	125	197	17									
\$10,000 to \$12,499	2 319	522	1 797	56									
\$12,500 to \$14,999	804	96	708	6									
\$15,000 to \$17,499	233	72	161	13									
\$17,500 to \$19,999	82	31	51	—									
\$20,000 to \$24,999	29	5	24	—									
\$25,000 to \$34,999	5	—	5	—									
\$35,000 or more	7	—	7	—									
Median value of property	27	—	27	—									
Mean value of property	\$8 400	\$7 900	\$8 600	...									
	\$9 200	\$8 300	\$9 400	...									
Specified owner occupied below poverty level ¹													
Less than \$5,000	986	178	808	14									
\$5,000 to \$9,999	67	32	35	—									
\$10,000 to \$12,499	623	112	511	14									
\$12,500 to \$14,999	224	16	208	—									
\$15,000 to \$17,499	45	5	40	—									
\$17,500 to \$19,999	13	13	—	—									
\$20,000 to \$24,999	—	—	—	—									
\$25,000 or more	—	—	—	—									
Median value of property	14	—	14	—									
Mean value of property	\$8 400	\$7 500	\$8 600	...									
	\$9 100	\$8 100	\$9 300	...									
GROSS RENT													
Specified renter occupied ²													
Less than \$40	5 439	1 710	3 706	62									
\$40 to \$59	45	22	23	—									
\$60 to \$79	690	293	397	—									
\$80 to \$99	1 757	633	1 110	33									
\$100 to \$119	1 517	427	1 081	29									
\$120 to \$149	675	185	490	—									
\$150 to \$199	408	90	318	—									
\$200 to \$249	163	7	156	—									
\$250 or more	52	—	52	—									
No cash rent	7	—	7	—									
Median gross rent	125	53	72	—									
Mean gross rent	\$82	\$76	\$85	...									
	\$86	\$78	\$90	...									
Specified renter occupied below poverty level ²													
Less than \$40	1 716	548	1 168	19									
\$40 to \$59	6	6	—	—									
\$60 to \$79	269	101	168	—									
\$80 to \$99	611	244	367	11									
\$100 to \$119	384	111	273	8									
\$120 to \$149	177	46	131	—									
\$150 to \$199	159	21	138	—									
\$200 to \$249	53	—	53	—									
\$250 or more	16	—	16	—									
Median gross rent	—	—	—	—									
Mean gross rent	\$78	\$73	\$83	...									
	\$84	\$74	\$89	...									
GROSS RENT AS PERCENTAGE OF INCOME BY POVERTY STATUS IN 1969													
Specified renter occupied ³													
Less than 20 percent	5 072	1 581	3 468	62									
20 to 24 percent	2 046	619	1 418	35									
25 to 34 percent	554	164	390	—									
35 to 49 percent	741	236	505	8									
50 percent or more	649	186	449	11									
	1 082	376	706	8									
Specified renter occupied below poverty level ³													
Less than 20 percent	1 433	453	980	19									
20 to 24 percent	18	6	12	—									
25 to 34 percent	32	—	32	—									
35 to 49 percent	126	9	117	—									
50 percent or more	303	94	209	11									
	954	344	610	8									

¹Limited to one-family homes on less than 10 acres and no business on property. Cooperatives, condominiums, mobile homes, and trailers are excluded. ²Excludes one-family homes on 10 acres or more. Specified renter occupied units below poverty level include "no cash rent" units not shown separately. ³Excludes one-family homes on 10 acres or more, all "no cash rent" units, and units for which the income of the family or primary individual was reported as "none" or "loss."