



1970 CENSUS OF POPULATION

U. S. DEPARTMENT OF COMMERCE • Social and Economic Statistics Administration • BUREAU OF THE CENSUS

PC(S1)-95

Issued June 1974

SUPPLEMENTARY REPORT

Low-Income Neighborhoods in Large Cities: 1970

Phoenix, Ariz.

This report is one of 39 within the PC(S1) series of 1970 census reports that summarize information on the population and housing characteristics of low-income neighborhoods in the Nation's 50 largest cities.¹ Low-income neighborhoods are subdivisions of low-income areas, which for this report include all census tracts in which 20 percent or more of all persons were below the poverty level in 1969. (See "Definitions.") These low-income neighborhoods generally consist of contiguous census tracts with a combined population of 20,000 or more. The neighborhood boundaries are based on current socioeconomic data and the recommendations of local agencies.

Information is presented here on each of the low-income neighborhoods within the city. The statistics shown in the detailed tables are part of a special tabulation of 1970 census data prepared for the Office of Economic Opportunity to determine the location of low-income areas and their neighborhood subdivisions, to analyze the characteristics of the residents of these neighborhoods, and to compare the residential characteristics of a low-income neighborhood to those of other low-income neighborhoods and those of areas outside such neighborhoods. For further information on this special tabulation, see "Related Materials." Financial support for the preparation of this set of 39 reports was provided by the Office of Assistant Secretary for Planning and Evaluation, Department of Health, Education, and Welfare. Similar data for the entire city, the entire low-income area (without neighborhood subdivisions), and the balance of the city outside the low-income area are published in **1970 Census of Population, Volume II, Subject Reports, Series PC(2)-9B, "Low-Income Areas in Large Cities."**

¹ Except Honolulu, for which no low-income neighborhoods were defined. See list of 39 reports on page ii.

This report was prepared by Donald G. Fowles, Poverty Statistics Program, Population Division.

For sale by the Superintendent of Documents, U.S. Government Printing Office, Washington, D.C. 20402, and U.S. Department of Commerce District Offices. Price \$0.50

SOCIAL AND ECONOMIC STATISTICS ADMINISTRATIVE LIBRARY

PC(S1) REPORTS ON LOW-INCOME NEIGHBORHOODS IN LARGE CITIES

Report number	Cities	Report number	Cities
65	Atlanta, Ga.	85	Miami, Fla.
66	Baltimore, Md.	86	Milwaukee, Wis.
67	Birmingham, Ala.	87	Minneapolis and St. Paul, Minn.
68	Boston, Mass.	88	Newark, N.J.
69	Buffalo and Rochester, N.Y.	89	New Orleans, La.
70	Chicago, Ill.	90	New York, N.Y.
71	Cincinnati, Ohio	91	Norfolk, Va.
72	Cleveland and Toledo, Ohio	92	Oklahoma City and Tulsa, Okla.
73	Columbus, Ohio	93	Omaha, Nebr.
74	Dallas and Fort Worth, Tex.	94	Philadelphia, Pa.
75	Denver, Colo.	95	Phoenix, Ariz.
76	Detroit, Mich.	96	Pittsburgh, Pa.
77	El Paso, Tex.	97	Portland, Oreg.
78	Houston, Tex.	98	St. Louis, Mo.
79	Indianapolis, Ind.	99	San Antonio, Tex.
80	Jacksonville and Tampa, Fla.	100	San Diego and San Jose, Calif.
81	Kansas City, Mo.	101	San Francisco and Oakland, Calif.
82	Los Angeles and Long Beach, Calif.	102	Seattle, Wash.
83	Louisville, Ky.	103	Washington, D.C.
84	Memphis and Nashville-Davidson, Tenn.		

About 97,000 persons resided in the low-income area of Phoenix, Ariz., in 1970 (table A). These low-income area residents constituted 17 percent of the city's population. In the balance of the metropolitan area outside Phoenix, the same proportion of the population resided in such areas.

The low-income area of Phoenix was subdivided into two neighborhoods having populations of 76,000 (neighborhood 1) and 20,000 (neighborhood 2). The low-income area contained 33,000 persons of Spanish language. This ethnic group constituted 34 percent of the low-income area population, as compared with 9 percent in the balance of the city. Neighborhood 1 had the higher proportion of Spanish persons (37 percent).

The low-income area also contained 20,000 Negroes. The proportion of the population which was Negro ranged from 15 percent in neighborhood 1 to 40 percent in neighborhood 2. In the low-income areas as a whole, Negroes constituted 20 percent of the population, as compared with 2 percent in the balance of the city.

There were 67,000 persons in Phoenix who were below the poverty level in 1969. Of these, 46 percent lived in the low-income area. About 32 percent of the residents of the low-income area were below the poverty level, as compared with only 8 percent of those living elsewhere in the city. Within the low-income area, this proportion was 33 percent in neighborhood 1 and 30 percent in neighborhood 2.

Although a high proportion of the poor resided in the low-income areas, Negroes and white persons of Spanish language who were above the poverty level were more likely to live in this area than whites (other than Spanish) who were below this level. About 63 percent of the city's blacks and 38 percent of white persons of Spanish language who were above the poverty level lived in the low-income area, as compared with 27 percent for non-Spanish whites who were poor in 1969.

The population of the low-income area, as well as the balance of the city, contained the whole range of social, economic, and housing characteristics. However, there were generally sharp contrasts between the

proportional distribution of the characteristics of the low-income area population and the population living outside this area. In addition, there was some variation in the characteristics of the individual neighborhoods within the low-income area.

Families within the low-income area were more likely to be headed by females than families outside this area. Such families constituted 21 percent of all low-income area families, as compared with only 9 percent of families living elsewhere in the city (table B). Low-income area families headed by women were also more likely to have children in the home and, moreover, tended to have a larger number of children than families living outside the low-income area. Thus, a considerably higher proportion of children living in the low-income area (35 percent) were in families in which both parents were not present than were children living outside this area (13 percent).

The generally lower socioeconomic status of the low-income area population was reflected by such characteristics as education, employment, and occupation. For example, about 70 percent of persons 25 years old and over who resided in the low-income area had not completed their high school education, as compared with 35 percent outside this area.

Low-income area families were less likely to contain earners than those living outside this area,

even when families headed by an aged person were excluded. Furthermore, working heads of families were less likely to have worked year round if they lived in the low-income area. Unemployment rates were generally higher in this area than elsewhere, and those persons who were employed were more concentrated in the lower-paying occupations. Only 23 percent of employed males who lived in the low-income area were employed in white-collar occupations, as compared with 50 percent for males living outside this area. This proportion was as low as 16 percent in neighborhood 2. The same relationship was observed for females, although they were more likely to be employed in white-collar occupations (primarily as clerical and sales workers) than males.

The low-income neighborhoods of Phoenix were clustered around the central business district and therefore contained a disproportionate share of older housing units, often vacant. The majority of the housing units in the low-income area were occupied by renters, and a higher proportion contained more than one person per room than units outside this area. Low-income area housing tended to be less expensive in terms of average rent but similar in terms of the proportion of a family's income required to cover this expense. About 48 percent of the low-income area households paid more than one-fourth of their income for rent, as compared with 44 percent for households outside this area.

Table A. Poverty Status in 1969 of Persons By Residence in Low-Income Neighborhoods, Race, and Spanish Language, for the Phoenix, Ariz. SMSA: 1970

(See accompanying maps and tract listings for location of low-income neighborhoods)

Area	All income levels					Below poverty level			Percent below poverty level		
	Total	Negro	Spanish language	Percent of total		Total	Negro	Spanish language	Total	Negro	Spanish language
				Negro	Spanish language						
SMSA, total.....	953,988	31,587	127,526	3.3	13.4	112,531	11,153	32,018	11.8	35.3	25.1
In low-income area.....	159,591	21,816	60,649	13.7	38.0	51,253	9,506	22,299	32.1	43.6	36.8
Percent in low-income area.....	16.7	69.1	47.6	(X)	(X)	45.5	85.2	69.6	(X)	(X)	(X)
Phoenix.....	575,742	27,271	73,524	4.7	12.8	66,857	9,780	15,502	11.6	35.9	21.1
In low-income area ¹	96,547	19,702	32,987	20.4	34.2	30,964	8,654	10,868	32.1	43.9	32.9
Percent in low-income area.....	16.8	72.2	44.9	(X)	(X)	46.3	88.5	70.1	(X)	(X)	(X)
Neighborhood 1.....	76,076	11,686	28,063	15.4	36.9	24,710	5,441	9,530	32.5	46.6	34.0
Neighborhood 2.....	20,263	8,016	4,924	39.6	24.3	6,103	3,213	1,338	30.1	40.1	27.2
Not in low-income area.....	479,195	7,569	40,537	1.6	8.5	35,893	1,126	4,634	7.5	14.9	11.4
Balance of SMSA.....	378,246	4,316	54,002	1.1	14.3	45,674	1,373	16,516	12.1	31.8	30.6
In low-income area.....	63,044	2,114	27,662	3.4	43.9	20,289	852	11,431	32.2	40.3	41.3
Percent in low-income area.....	16.7	49.0	51.2	(X)	(X)	44.4	62.1	69.2	(X)	(X)	(X)

(X) Not applicable.

¹Includes census tract 1087 not included in the neighborhoods.

Table B. Summary of Social, Economic, and Housing Characteristics of the Population By Residence in Low-Income Neighborhoods, for Phoenix, Ariz.: 1970

(See accompanying maps and tract listings for location of low-income neighborhoods)

Area	Families				Persons					Housing units					
	Percent of all families	With female head		Head worked in 1969—percent worked 50 to 52 weeks	Percent with no earners ¹	Employed, 15 years old and over—percent in white collar occupations		Males in civilian labor force, 15 to 64 years old—percent unemployed	25 years old and over—percent not high school graduate	Related children under 18 years old—percent not living with both parents	Percent vacant	Occupied—percent			
		Percent	Mean number of children			Male	Female					Renter—occupied	Structures built 1939 or earlier	With 1.01 or more persons per room	Gross rent one-fourth or more of income ²
Phoenix, total.....	10.9	69.7	2.34	73.5	3.4	45.8	65.8	3.6	40.7	17.0	4.6	36.2	11.2	8.9	45.1
In low-income area.....	20.5	75.4	2.97	60.1	9.0	22.6	40.5	7.1	69.5	34.8	7.7	60.3	37.1	18.1	47.6
Neighborhood 1.....	21.8	75.0	2.82	58.2	9.7	24.2	41.5	7.4	68.2	37.1	7.7	65.1	42.3	16.2	49.1
Neighborhood 2.....	15.6	77.1	3.74	66.7	6.8	16.4	37.1	6.2	75.6	28.1	8.0	37.0	12.2	27.0	35.4
Not in low-income area.....	9.3	67.5	2.07	75.4	2.5	49.6	69.8	3.0	35.2	13.3	3.9	31.0	5.7	7.0	44.1

¹Excludes families with head 65 years old and over.

²Excludes one-family homes on 10 acres or more, all "no cash rent" units, and units for which the income of the family or primary individual was reported as "none" or "loss."

RELATED MATERIALS

1970 Census

There are three primary sources of 1970 census data on the characteristics of the population residing in low-income areas as defined in this report. The first source is the volume II report, PC(2)-9B, "Low-Income Areas in Large Cities," which presents data for low-income areas (without neighborhood subdivisions) in the Nation's 50 largest cities. The second source, consisting of this report and the other PC(S1) reports listed on page 2, presents data for neighborhood subdivisions of low-income areas in the same 50 cities. The third source, from which the data for these PC(S1) reports were extracted, consists of a special tabulation of 1970 census data prepared for the Office of Economic Opportunity (OEO). This tabulation covers each of the 97 standard metropolitan statistical areas (SMSA's) in which one or more of the central cities had at least one group of contiguous low-income area tracts with a population of 20,000 or more. For each of these 97 SMSA's, the OEO tabulation shows data for the entire SMSA, each component county, and each central city, including the neighborhood subdivisions of the central city low-income area.

In each of the three sources, comparable data are shown for all races, white, Negro, and persons of Spanish language. For SMSA's in California, data also are shown for the Japanese, Chinese, American Indian, and Filipino populations.

Copies of the entire OEO tabulation for each of the 97 SMSA's, including maps and census tract listings which identify the low-income areas and their neighborhood subdivisions, were sent to the appropriate Federal Regional Councils, State Economic Opportunity Offices, and local community action agencies. Copies of these materials can also be obtained by writing to the Chief, Industrial and Social Records Branch, National Archives, Washington, D.C. 20408. Requests for further information about this tabulation, as well as limited requests for copies, should be made in writing to the Chief, Population Division, Bureau of the Census, Washington, D.C. 20233.

Selected summary data for the 50 cities individually and seven tables of detailed data for the 50 cities combined were extracted from the PC(2)-9B report and published separately in **1970 Census of Population, Supplementary Report, Series PC(S1)-56, "Selected Characteristics of the Population in Low-Income Areas of Large Cities."**

Maps of these 50 cities showing the location of census tracts in low-income areas by poverty rate (but without neighborhood subdivisions) are available at cost of reproduction. Requests for these maps, specifying the cities desired, should be made in writing to the Chief, Population Division, Bureau of the Census, Washington, D.C. 20233.

Data for low-income areas as defined for the Census Employment Survey (CES) are available for 60 urban and 7 rural areas in **1970 Census of Population and Housing, Employment Profiles of Selected Low-Income Areas, Series PHC(3)**. The definition of low-income areas used for the CES differs from the definition used for this report. (See "Definitions.") Most of the data in the PHC(3) reports consist of detailed information not available from the 1970 census questionnaire on such subjects as employment, unemployment, training for work, job-seeking methods, job tenure, sources and level of income, residential mobility, transportation to work, and selected factors considered deterrents to employment.

Poverty statistics based on the 20-percent sample for the United States, regions, divisions, States, SMSA's, places with a population of 2,500 or more, and counties were published in chapter C of **1970 Census of Population, Volume I, Characteristics of the Population**. More detailed poverty data cross-classified by such variables as education, employment status, occupation, and income were published in chapter D of the volume I report for the United States, regions, States, SMSA's with a population of 250,000 or more, and central cities of these SMSA's. The statistics shown in each of the State parts of the volume I report are summarized for the United States in Volume I, Part 1, "United States Summary." Chapters C and D were originally published as separate paperbound reports in series PC(1)-C, "General Social and Economic Characteristics," and PC(1)-D, "Detailed Characteristics."

Poverty statistics also are shown for census tracts of 241 SMSA's and selected adjacent areas in **1970 Census of Population and Housing, Census Tracts, Series PHC(1)**. A description of poverty data contained in volume I and census tract reports can be found in Data Access Description No. 29, "Low-Income Data from the 1970 Census."

1960 Census

Statistics for low-income areas as defined by the use of 1960 census data are available for metropolitan

areas and their central cities in **1960 Census of Population, Supplementary Reports, Series PC(S1)-54, "Poverty Areas in the 100 Largest Metropolitan Areas."** The definition of low-income areas based on 1960 census data differs from the definition used in this report. (See "Definitions.") The PC(S1)-54 report contains information on persons and families by age, race, family status, poverty status in 1959, and sex and age of family head. Census tract maps showing the delineation of these low-income areas were published by the Office of Economic Opportunity in a report entitled **Maps of Major Concentrations of Poverty in SMSA's of 250,000 or More Population.**

Special Censuses

Two reports based on special censuses conducted by the Bureau of the Census during the 1960's provide survey data and comparable 1960 census data for what are essentially neighborhood subdivisions of the 1960 census low-income areas. **Current Population Reports, Series P-23, No. 18, "Characteristics of the South and East Los Angeles Areas: November 1965,"** presents social, economic, and housing data for seven neighborhoods in South Los Angeles and three neighborhoods in East Los Angeles. **Current Population Reports, Series P-23, No. 21, "Characteristics of Selected Neighborhoods in Cleveland, Ohio: April 1965,"** presents population characteristics for nine neighborhoods in Cleveland and for the balance of the city, with totals for the city as a whole.

Current Population Survey

Data on the population are collected and published regularly by the Bureau of the Census through its Current Population Survey (CPS), a nationwide survey covering a sample of about 47,000 households. Statistics from the March 1973 CPS for low-income areas based on the 1970 census definition are published in **Current Population Reports, Series P-60, No. 91, "Characteristics of the Low-Income Population: 1972."**

DEFINITIONS

Low-Income Areas

1970 census definition.—For this report, a low-income area consists of all census tracts in which 20

percent or more of all persons were below the poverty level in 1969. This method of defining low-income areas, which differs from other methods used in the past, was developed to provide a statistical index based on income only and to utilize the small-area data on poverty status which were available in 1970 for the first time in a decennial census.

To arrive at this definition, research was conducted by the Bureau's staff that would delineate for a given year low-income areas similar in size and location to those delineated by the 1960 census definition, which was based on an unweighted combination of five poverty-related socioeconomic characteristics. The researchers utilized a special tabulation of 1960 census data for census tracts in a sample of large metropolitan areas. Low-income areas defined by the 1960 census definition were chosen from this sample and were compared to low-income areas defined by aggregating all census tracts with poverty rates above selected cutoff values. This comparison showed that areas consisting of census tracts with poverty rates of 20 percent or more most closely approximated low-income areas defined by the 1960 method.

Although the majority of low-income areas selected by this definition are adjacent to each other, some represent scattered or isolated pockets of poverty. Tracts which contain fewer than 100 persons or which consist entirely of crews of vessels are excluded from low-income areas.

Previous definitions.—The 1960 definition of low-income areas was developed by the Bureau of the Census as part of its work for the Office of Economic Opportunity to identify areas of major concentrations of poverty within large metropolitan areas. This definition consisted of ranking census tracts in metropolitan areas with a 1960 population of 250,000 or more according to the relative presence of each of the following equally weighted poverty-linked characteristics: (1) Families with money incomes below \$3,000; (2) children under 18 years old not living with both parents; (3) persons 25 years and over with less than 8 years of school completed; (4) unskilled males (laborers and service workers) in the civilian labor force; and (5) housing units dilapidated or lacking some or all plumbing facilities. Those tracts falling in the lowest quartile of the ranking were defined as poor tracts and further adjusted for contiguity and minimum size in order to approximate neighborhood concentrations of poverty. For a detailed explanation of this definition, see **Current Population Reports, Series P-23, No. 19, "Characteristics of Families Residing in 'Poverty Areas': March 1966."**

These 1960 low-income areas were revised in 1969 to provide more up-to-date delineations of low-income areas in selected large cities. The revised areas were used as survey areas for the Census Employment Survey. This survey, in which detailed socioeconomic information on employment-related problems was collected in each of 60 urban and 7 rural areas, was conducted as part of the overall program of the 1970 census. Because of the timing of this project, 1970 census data could not be used to select the survey areas. Instead, changes were made to the 1960 low-income areas based on more recent information acquired from a wide variety of sources and corroborated by knowledgeable local experts. For further information on these CES areas, see 1970 Census of Population and Housing, Employment Profiles of Selected Low-Income Areas, Series PHC(3).

Low-Income Neighborhoods

To provide a more detailed geographic breakdown of large central city low-income areas, these areas were further subdivided into "neighborhoods," which consisted of contiguous census tracts with a combined population of 20,000 or more. The neighborhood boundaries were based on currently available socioeconomic data and on recommendations from representatives of local groups such as community action, model cities, city planning, and welfare agencies. In some cases, it was necessary to combine neighborhoods to meet the minimum size require-

ment of 20,000. A few exceptions to this minimum size requirement were made where it was deemed appropriate. It should be noted that detailed sample data become less reliable as the size of the neighborhood decreases.

In some cases, isolated tracts or groups of tracts could not be classified as a neighborhood and were included in a category called "remainder of low-income area." Data were tabulated for these "remainders" if they contained a population of 20,000 or more. Inspection of maps and tract listings is necessary to determine the usefulness of the data for these "remainders."

Poverty Status in 1969

Families and unrelated individuals are classified as being above or below the poverty level using the poverty index adopted by a Federal Interagency Committee in 1969. This index provides a range of income cutoffs or "poverty thresholds" adjusted to take into account such factors as family size, sex and age of family head, number of children, and farm-nonfarm residence. The poverty cutoffs for farm families have been set at 85 percent of the nonfarm levels. These income cutoffs are updated every year to reflect the changes in the Consumer Price Index. The average poverty threshold for a nonfarm family of four was \$3,748 in 1969. (See table C.)

Table C. Weighted Average Thresholds at the Low-Income Level in 1969 By Size of Family Unit, Farm-Nonfarm Residence, and Sex of Head

(Figures in dollars. Based on 5-percent sample)

Size of family unit	Total	Nonfarm			Farm		
		Total	Male head	Female head	Total	Male head	Female head
All unrelated individuals....	1,844	1,849	1,931	1,795	1,570	1,615	1,517
Under 65 years.....	1,897	1,901	1,980	1,830	1,631	1,680	1,550
65 years and over.....	1,749	1,755	1,770	1,750	1,499	1,510	1,490
All families.....	3,380	3,400	3,435	3,124	2,929	2,944	2,610
2 persons.....	2,372	2,388	2,398	2,328	2,017	2,021	1,938
Head under 65 years.....	2,446	2,461	2,474	2,378	2,098	2,102	1,999
Head 65 years and over...	2,200	2,219	2,221	2,204	1,880	1,881	1,871
3 persons.....	2,909	2,927	2,942	2,823	2,478	2,484	2,363
4 persons.....	3,727	3,748	3,750	3,727	3,192	3,193	3,166
5 persons.....	4,385	4,413	4,416	4,372	3,757	3,757	3,747
6 persons.....	4,924	4,958	4,960	4,935	4,224	4,224	4,231
7 or more persons.....	6,058	6,111	6,123	6,009	5,196	5,197	5,152

Source: 1970 Census of Population, Volume II, Subject Reports, Series PC(2)-9A, "Low-Income Population."

The low-income concept has been developed as a tool for measuring the overall economic well-being of the population at the lower end of the income scale. It is an attempt to identify in dollar terms a minimum level of income adequacy for families of different types in keeping with American consumption patterns. Based on an analysis of the percent of income devoted to food expenditures, an estimate was developed which specifies the minimum cost at which an American family, making average choices, can be provided with a diet meeting recommended nutritional goals. Consequently, it is an overall statistical yardstick which reflects the different consumption requirements of families of different size, taking into account family composition (number of adults and number of children) and farm-nonfarm residence. Insofar as individual circumstances or consumption patterns differ, the dollar value of the low-income threshold for a given family size may not represent the money income required by an individual family to maintain a level of economic well-being equivalent to other families with similar incomes. For a detailed explanation of the low-income concept, see appendix B in the volume I reports.

Income in 1969

Income data collected in the census are limited to money income received before payments for personal income taxes and deductions for Social Security, union dues, Medicare, etc. Money income is the sum of the amounts received from earnings; Social Security and public assistance payments; dividends, interest, and rent; unemployment and workmen's compensation; government and private employee pensions; and other periodic income. (Certain money receipts such as capital gains are not included.) Therefore, money income does not reflect the fact that many families receive part of their income in the form of nonmoney transfers such as food stamps, health benefits, and subsidized housing; that many farm families receive nonmoney income in the form of rent-free housing and goods produced and consumed on the farm; or that nonmoney incomes also are received by some nonfarm residents which often take the form of the use of business transportation and facilities, full or partial payments by business for retirement programs, medical and educational expenses, etc. These elements should be considered when comparing income levels.

Since the reporting of income frequently is based on memory rather than on records, there is a tendency to underreport or fail to report some elements of income. Underreporting is especially pronounced for income sources that are not derived

from earnings, such as Social Security and public assistance payments, interest and dividends, etc. For example, in the Current Population Survey it has been determined that income earned from wages or salary tends to be much better reported than other sources of income and is nearly equal to independently derived benchmark estimates. By contrast, recent CPS income data on Social Security and public assistance payments to beneficiaries have averaged approximately 80 and 75 percent, respectively, of their benchmark estimates. In the census the underreporting of these specified types of income and the number of recipients of such income compared with administrative records reflects, for the most part, the failure of some respondents to report them accurately, rather than the failure to enumerate persons receiving them.

Race

Data are shown separately in each table for two racial categories, white and Negro. The category "white" includes persons who indicated their race as white, as well as persons who did not classify themselves in one of the specific race categories on the questionnaire but entered Mexican, Puerto Rican, or a response suggesting Indo-European stock. The category "Negro" includes persons who indicated their race as Negro or black, as well as persons who did not classify themselves in one of the specific race categories on the questionnaire but who had such entries as Jamaican, Trinidadian, West Indian, Haitian, and Ethiopian. The classification of families and households by race refers to the race of the family or household head.

Other races shown separately in table 1 are American Indian, Japanese, Chinese, and Filipino. The category "American Indian" includes persons who indicated their race as American Indian, as well as persons who did not indicate a specific race category but reported the name of an Indian tribe.

Persons of Spanish Language

Persons of Spanish language comprise persons who reported Spanish as their mother tongue (i.e., the language usually spoken in the home when these persons were children) and also include all other persons in families in which the head or wife reported Spanish as his or her mother tongue. Persons of Spanish language may be of any race, although the large majority are white. Table 1 shows the distribution of persons of Spanish language by race.

Standard Metropolitan Statistical Areas

Except in the New England States, a standard metropolitan statistical area (SMSA) is a county or group of contiguous counties which contains at least one city of 50,000 inhabitants or more, or "twin cities" with a combined population of at least 50,000. In addition to the county or counties containing such a city or cities, contiguous counties are included in an SMSA if, according to certain criteria, they are socially and economically integrated with the central city. In the New England States, SMSA's consist of towns and cities instead of counties. Each SMSA must include at least one central city, and the complete title of an SMSA identifies the central city or cities. For a detailed description of the criteria used in defining SMSA's, see the Office of Management and Budget (formerly Bureau of the Budget) publication, Standard Metropolitan Statistical Areas: 1967, U.S. Government Printing Office, Washington, D.C. 20402.

Census Tracts

Census tracts are small areas averaging about 4,000 residents into which large cities and adjacent areas have been divided for statistical purposes. Tract boundaries were established cooperatively by local committees and the Bureau of the Census with the intention of maintaining them over a long time so that comparisons could be made from census to census. Generally, tracts were designed to be relatively uniform with respect to population characteristics, economic status, and living conditions. For further information, see 1970 Census of Population and Housing, *Census Tracts*, Series PHC(1).

SAMPLE SIZE

The data presented here are based on a 15-percent sample and are therefore subject to sampling variability. Definitions and technical explanations relating to the statistics in this report, as well as information on sampling variability, may be found in the volume II report, PC(2)-9B, "Low-Income Areas in Large Cities" or in the volume I reports.

Inmates of institutions, members of the Armed Forces living in barracks, college students living in dormitories, and unrelated individuals under 14 years old are excluded from the tabulations. Thus, the number of all persons shown for a given area will not equal the total population counts commonly cited from census reports.

DERIVED FIGURES AND SYMBOLS

Derived Figures

Percents, medians, and means, as well as certain rates and ratios, are used in this report. For all types of derived figures shown, the figure is not presented if the base is smaller than the minimum number (132) prescribed for the 15-percent sample. Instead, a symbol has been inserted.

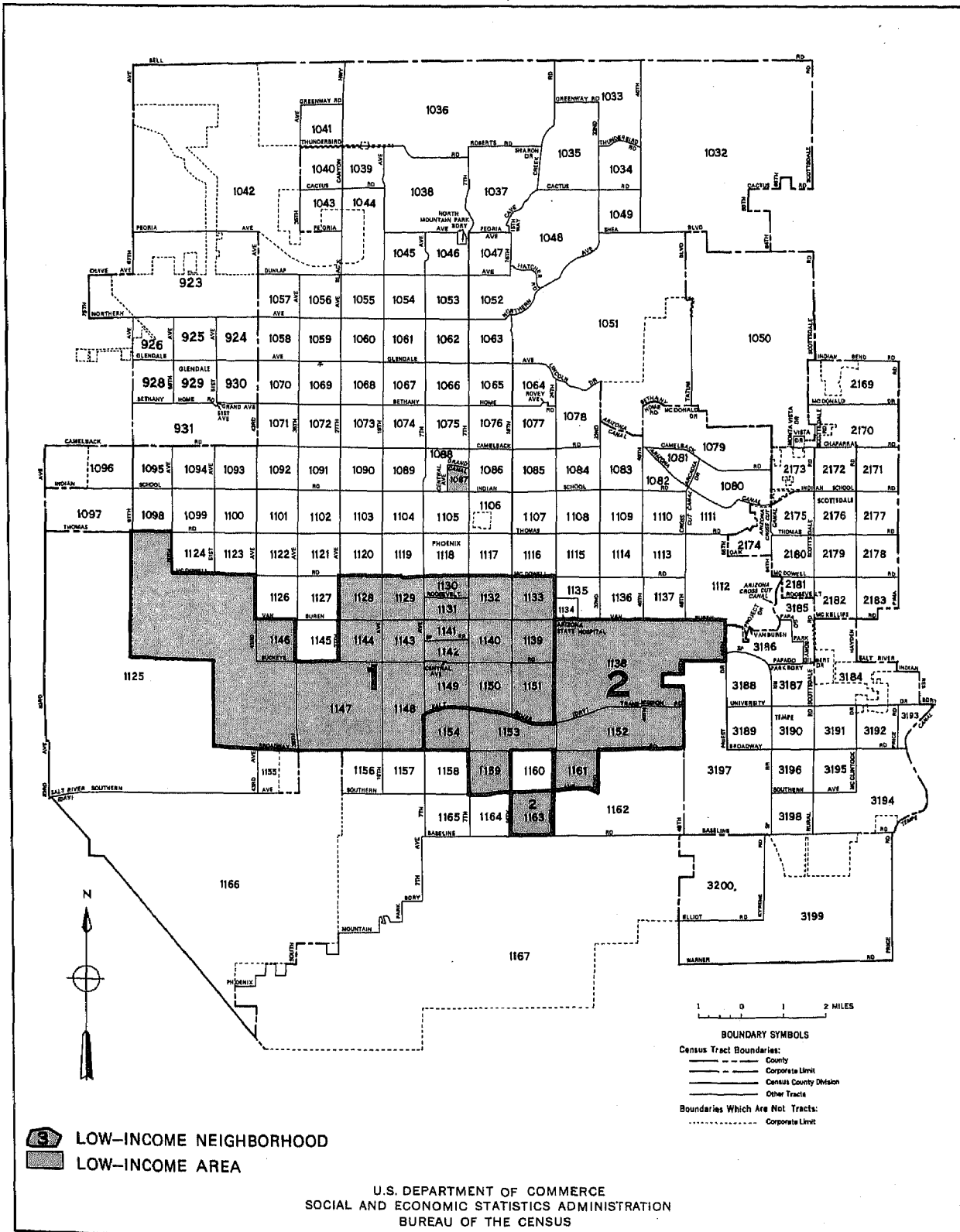
Symbols

A dash "--" signifies zero. Three dots "..." mean that the data are being withheld to avoid disclosure of information for individuals or households or that the base for the derived figure is too small for it to be shown. Any other symbols used are explained on the individual table in which they occur.

Table D. Census Tract Composition of Low-Income Neighborhoods in Phoenix, Ariz.: 1970

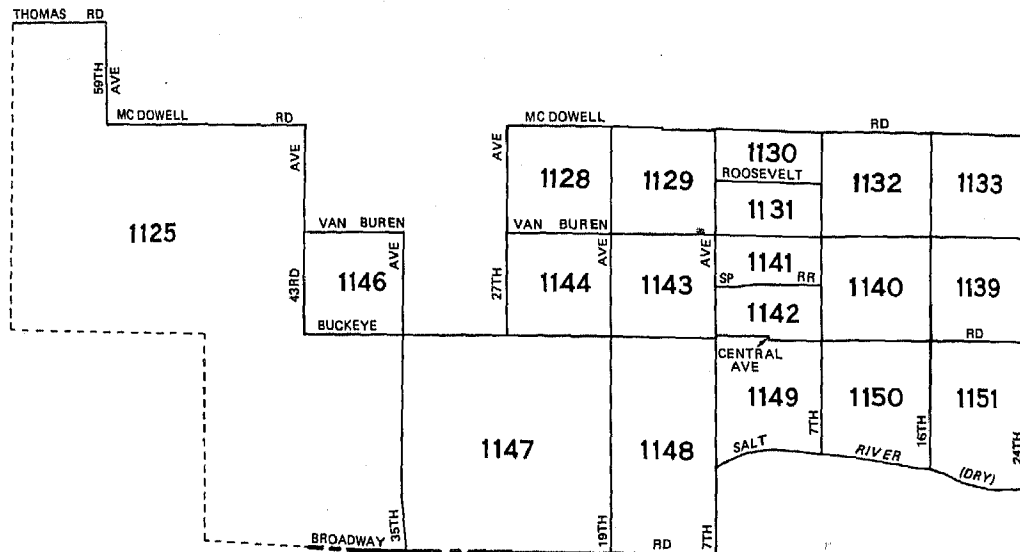
<u>Neighborhood 1</u>			<u>Neighborhood 2</u>
1125	1139	1146	1138
1128	1140	1147	1152
1129	1141	1148	1153
1130	1142	1149	1154
1131	1143	1150	1159
1132	1144	1151	1161
1133			1163

PHOENIX, ARIZONA 1970 LOW-INCOME NEIGHBORHOODS

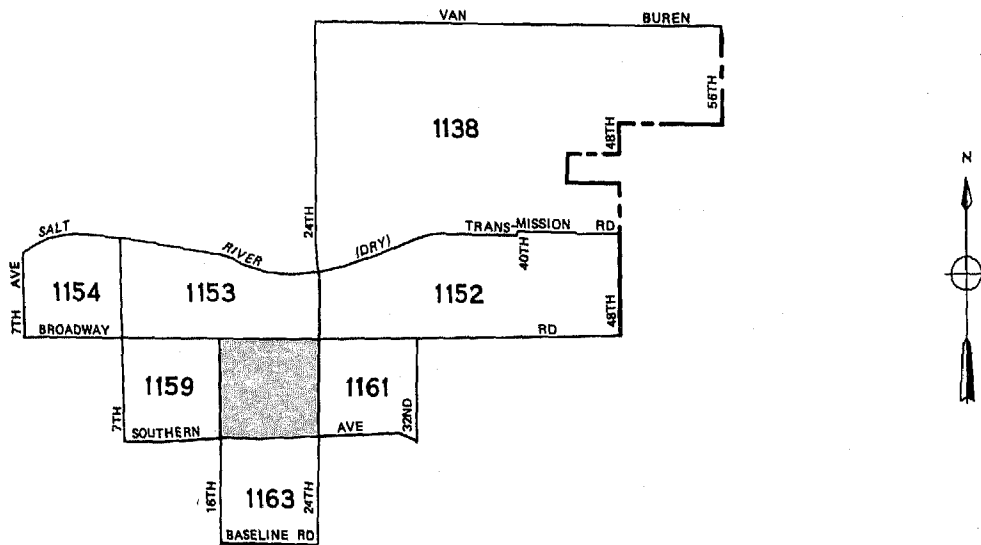


PHOENIX, ARIZONA 1970 LOW-INCOME NEIGHBORHOODS

NEIGHBORHOOD 1



NEIGHBORHOOD 2



EXCLUDED AREA

5000 0 5000 10000 FEET

U.S. DEPARTMENT OF COMMERCE

SOCIAL AND ECONOMIC STATISTICS ADMINISTRATION

BUREAU OF THE CENSUS

Table A-1. Selected Characteristics of Persons and Families by Residence in Census Tracts With a Poverty Rate of 20 Percent or More: 1970

(Excludes inmates of institutions, members of Armed Forces living in barracks, college students living in dormitories, and unrelated individuals under 14 years. Data based on 15-percent sample, see text. For minimum base for derived figures (percent, median, etc.) and meaning of symbols, see text.)

Phoenix	Neighborhood 01				Neighborhood 02				All races	White	Negro	Persons of Spanish language
	All races	White	Negro	Persons of Spanish language	All races	White	Negro	Persons of Spanish language				
RACE												
All Income Levels												
All persons	76 076	62 133	11 686	28 063	20 263	11 848	8 016	4 924				
Persons of Spanish language	28 063	27 030	279	28 063	4 924	4 698	116	4 924				
White	62 133	62 133		27 030	11 848	11 848		4 698				
Negro	11 686		11 686	279	8 016		8 016	116				
Other races	2 257			754	399							
American Indian	1 344			190	101							
Japanese	68			6	49							
Chinese	180			28	46							25
Filipino	311			230	47							85
All other	354			300	156							
Percent Below Poverty Level												
All persons	32.5	29.3	46.6	34.0	30.1	23.2	40.1	27.2				
Persons of Spanish language	34.0	33.5	39.4	34.0	27.2	27.8	...	27.2				
White	29.3	29.3		33.5	23.2	23.2		27.8				
Negro	46.6		46.6	39.4	40.1		40.1	...				
Other races	48.1			47.3	34.3							
American Indian	53.9			66.8	...							
Japanese							
Chinese	23.3									
Filipino	46.9			42.2	...							
All other	42.1			44.3	11.5							
RELATIONSHIP TO HEAD OF HOUSEHOLD FOR PERSONS BELOW POVERTY LEVEL												
All persons	24 710	18 183	5 441	9 530	6 103	2 753	3 213	1 338				
65 years and over	4 050	3 214	691	846	735	435	296	55				
In households	24 122	17 689	5 433	9 454	6 068	2 741	3 190	1 338				
Head of household	8 965	6 733	1 881	2 421	1 691	859	809	281				
Family head	4 435	3 181	1 069	1 759	1 162	536	612	251				
65 years and over	811	615	167	289	220	109	111	27				
Female	1 811	1 112	625	694	479	144	335	59				
Primary individual	4 530	3 552	812	662	529	323	197	30				
65 years and over	2 444	1 979	392	358	326	231	91	24				
Female	2 419	1 904	455	431	290	185	101	14				
Related child under 18 years	10 538	7 413	2 674	5 211	3 292	1 290	1 911	809				
Related child under 6 years	3 370	2 321	851	1 554	1 011	429	543	239				
Other relative of head	3 770	2 882	739	1 692	966	517	432	242				
Not related to head	849	661	137	130	119	75	38	6				
In group quarters	588	494	8	76	35	12	23	-				
AGE												
All males below poverty level	11 464	8 634	2 247	4 489	2 700	1 175	1 456	588				
Under 3 years	885	630	210	428	203	86	117	50				
3 to 5 years	877	612	209	434	293	95	187	51				
6 to 13 years	2 676	1 859	719	1 305	757	295	429	174				
14 to 17 years	970	786	141	576	329	100	229	69				
18 to 21 years	817	625	103	309	143	42	101	31				
22 to 24 years	245	224	21	124	64	49	15	44				
25 to 34 years	759	590	78	250	199	121	78	75				
35 to 44 years	671	509	129	235	126	63	57	42				
45 to 54 years	732	615	105	220	84	52	24	14				
55 to 64 years	990	725	237	259	141	60	70	8				
65 years and over	1 842	1 459	295	349	361	212	149	30				
Median age	18.6	19.8	12.8	13.5	14.2	18.1	12.9	14.1				
All females below poverty level	13 246	9 549	3 194	5 041	3 403	1 578	1 757	750				
Under 3 years	851	607	190	403	239	108	116	60				
3 to 5 years	757	472	242	289	276	140	123	78				
6 to 13 years	2 670	1 796	787	1 214	853	370	470	266				
14 to 17 years	1 047	820	187	594	383	112	265	69				
18 to 21 years	881	595	248	304	148	58	90	37				
22 to 24 years	415	320	68	161	52	44	8	28				
25 to 34 years	1 159	802	319	422	350	152	191	65				
35 to 44 years	1 124	802	261	451	262	128	124	69				
45 to 54 years	936	708	186	364	230	95	135	21				
55 to 64 years	1 198	872	300	342	236	148	88	32				
65 years and over	2 208	1 755	396	497	374	223	147	25				
Median age	24.0	26.1	19.9	17.3	16.5	21.1	15.6	12.1				
YEARS OF SCHOOL COMPLETED												
All Income Levels												
Male, 22 years and over	21 206	17 892	2 678	5 792	4 901	3 208	1 606	1 048				
Elementary: 0 to 7 years	6 458	5 087	1 106	2 615	1 709	997	687	549				
8 years	3 179	2 702	401	966	741	537	198	177				
High school: 1 to 3 years	3 769	3 187	483	788	1 156	836	312	162				
4 years	4 667	4 167	376	959	672	533	333	107				
College: 1 to 3 years	1 966	1 724	181	330	327	235	50	53				
4 years or more	1 167	1 025	131	134	96	70	26	-				
Median years of school completed	9.8	10.1	8.6	8.3	9.0	9.3	8.6	7.6				

Table A-1. Selected Characteristics of Persons and Families by Residence in Census Tracts With a Poverty Rate of 20 Percent or More: 1970-Continued

[Excludes inmates of institutions, members of Armed Forces living in barracks, college students living in dormitories, and unrelated individuals under 14 years. Data based on 15 percent sample, see text. For minimum base for derived figures (percent, median, etc.) and meaning of symbols, see text]

Phoenix	Neighborhood 01				Neighborhood 02				All races	White	Negro	Persons of Spanish language
	All races	White	Negro	Persons of Spanish language	All races	White	Negro	Persons of Spanish language				
YEARS OF SCHOOL COMPLETED—												
Con.												
All Income Levels—Con.												
Female, 22 years and over	22 503	18 648	3 320	6 596	5 149	3 181	1 887	968				
Elementary: 0 to 7 years	6 521	5 349	983	3 318	1 492	914	560	430				
8 years	3 877	3 254	542	1 333	883	599	280	222				
High school: 1 to 3 years	4 869	3 786	943	887	1 332	762	550	186				
4 years	4 938	4 222	610	876	1 078	702	348	119				
College: 1 to 3 years	1 572	1 400	159	143	312	178	134	11				
4 years or more	726	637	83	39	52	26	15	—				
Median years of school completed	9.5	9.6	9.4	8.0	9.4	9.3	9.6	8.2				
Income Below Poverty Level												
Male, 22 years and over	5 239	4 122	865	1 437	975	557	393	213				
Less than 8 years	2 482	1 799	520	885	472	253	200	143				
8 to 11 years	1 655	1 360	247	363	400	256	138	70				
12 years or more	1 102	963	98	189	103	48	55	—				
Female, 22 years and over	7 040	5 259	1 530	2 237	1 504	790	693	240				
Less than 8 years	2 915	2 205	622	1 440	599	337	252	130				
8 to 11 years	2 828	2 036	660	638	664	294	359	82				
12 years or more	1 297	1 018	248	159	241	159	82	28				
EMPLOYMENT STATUS AND AGE												
All Income Levels												
Male												
16 to 21 years ¹	3 719	3 088	487	1 612	968	546	408	280				
Employed	2 033	1 763	214	917	421	262	145	140				
Unemployed	293	256	37	105	71	47	24	33				
Not in labor force	1 356	1 045	223	571	476	237	239	107				
22 to 64 years ¹	16 815	14 192	2 126	5 145	4 148	2 726	1 343	968				
Employed	12 708	10 864	1 443	4 217	3 457	2 295	1 083	865				
Unemployed	881	714	153	200	187	139	48	24				
Not in labor force	3 116	2 524	510	694	476	288	188	79				
Family head, 22 to 64 years ¹	10 364	8 900	1 178	3 810	3 244	2 140	1 048	799				
Employed	8 421	7 267	878	3 262	2 802	1 849	897	742				
Unemployed	429	380	44	127	117	90	27	14				
Not in labor force	1 433	1 187	241	397	297	197	100	43				
Female												
16 to 21 years	4 558	3 672	751	2 005	1 106	667	415	289				
Employed	1 662	1 368	264	657	258	175	76	84				
Unemployed	284	238	38	128	30	20	10	6				
Not in civilian labor force	2 612	2 066	449	1 220	818	472	329	199				
22 to 64 years ¹	17 441	14 313	2 670	5 801	4 379	2 688	1 618	901				
Employed	7 988	6 414	1 394	2 068	1 707	928	759	245				
Unemployed	399	331	68	79	85	42	43	6				
Not in civilian labor force	9 054	7 568	1 208	3 654	2 587	1 718	816	650				
Family head, 22 to 64 years	3 063	2 114	869	1 149	581	224	357	67				
Employed	1 573	1 067	472	521	242	86	156	19				
Unemployed	47	24	23	6	8	8	—	—				
Not in civilian labor force	1 443	1 023	374	622	331	130	201	48				
Wife of head, 22 to 64 years	9 703	8 356	1 041	3 551	3 125	2 009	1 051	704				
Employed	3 653	2 994	555	1 029	1 115	625	470	180				
Unemployed	206	179	27	55	48	5	43	—				
Not in civilian labor force	5 844	5 183	459	2 467	1 962	1 379	538	524				
Income Below Poverty Level												
Male												
16 to 21 years ¹	1 254	999	156	511	256	79	177	53				
Employed	621	514	70	258	101	32	69	31				
Unemployed	78	72	6	43	15	5	10	—				
Not in labor force	555	413	80	210	140	42	98	22				
22 to 64 years ¹	3 397	2 663	570	1 088	614	345	244	183				
Employed	1 564	1 226	213	602	421	242	154	163				
Unemployed	223	201	22	89	47	26	21	—				
Not in labor force	1 610	1 236	335	397	146	77	69	20				
Family head, 22 to 64 years ¹	1 740	1 366	291	756	479	285	180	163				
Employed	1 003	775	145	454	351	201	136	152				
Unemployed	128	128	—	74	35	26	9	—				
Not in labor force	609	463	146	228	93	58	35	11				

¹Includes members of Armed Forces not living in barracks and not shown separately.

Table A--1. Selected Characteristics of Persons and Families by Residence in Census Tracts With a Poverty Rate of 20 Percent or More: 1970--Continued

[Excludes inmates of institutions, members of Armed Forces living in barracks, college students living in dormitories, and unrelated individuals under 14 years. Data based on 15-percent sample, see text. For minimum base for derived figures (percent, median, etc.) and meaning of symbols, see text]

Phoenix	Neighborhood 01				Neighborhood 02				All races	White	Negro	Persons of Spanish language
	All races	White	Negro	Persons of Spanish language	All races	White	Negro	Persons of Spanish language				
EMPLOYMENT STATUS AND AGE--Con.												
Income Below Poverty Level--Con.												
Female												
16 to 21 years	1 320	928	331	540	306	107	193	71				
Employed	306	228	66	82	36	5	31	5				
Unemployed	98	76	22	42								
Not in civilian labor force	916	624	243	416	270	102	162	66				
22 to 64 years	4 832	3 504	1 134	1 740	1 130	567	546	215				
Employed	1 314	821	436	291	309	91	214	38				
Unemployed	106	72	34	48	17	17		6				
Not in civilian labor force	3 412	2 611	664	1 401	804	459	332	171				
Family head, 22 to 64 years	1 545	958	519	613	395	131	264	46				
Employed	484	264	198	138	115	31	84	4				
Unemployed	34	11	23	6								
Not in civilian labor force	1 027	683	298	469	280	100	180	42				
Wife of head, 22 to 64 years	1 747	1 391	266	753	505	281	207	142				
Employed	323	164	141	73	136	38	94	28				
Unemployed	47	36	11	36	5	5						
Not in civilian labor force	1 377	1 191	114	644	364	238	113	114				
SELECTED OCCUPATIONS												
All Income Levels												
Male employed, 22 to 64 years ²	12 708	10 864	1 443	4 217	3 457	2 295	1 083	865				
Prof., tech., and kindred workers	924	807	99	157	193	127	60	6				
Health workers, exc. practitioners	49	22	27	8	35	16	13	6				
Teachers, elem. and secondary	87	62	25	7	29	18	11					
Managers and admin., exc. farm	864	814	50	95	180	124	56	26				
Self-employed	181	170	11	35	104	80	24	16				
Sales workers	558	498	60	124	117	96	13	23				
Retail trade	251	207	44	69	85	70	7	8				
Clerical and kindred workers	872	806	57	180	127	96	17	39				
Postal clerks and mail carriers	140	121	19	30	14	14		14				
Shipping, receiving & stock clerks	109	100		35	39	28	11	11				
Bkpr., cashiers, & bank tellers	77	72	5	21	36	36						
Craftsmen and kindred workers	2 451	2 210	185	828	896	667	223	232				
Construction craftsmen	850	752	70	336	259	210	43	77				
Mechanics and repairmen	568	529	24	148	287	203	84	60				
Operatives, except transport	1 999	1 699	179	829	490	314	176	134				
Assemblers	122	113	9	41	35	19	16	5				
Checkers, exam., & inspectors; mfg.	36	36		16	8	5	3	5				
Pkrs. & wrappers, inc. meat & prod.	88	65	8	50	41	41	7	7				
Sewers, stitchers, & textile oper.	23	23		11	7							
Transport equipment operatives	1 193	994	156	335	412	237	154	66				
Truck drivers	676	529	108	238	226	114	112	27				
Laborers, except farm	1 713	1 345	322	905	573	365	190	240				
Construction	476	387	89	307	238	162	76	114				
Freight, material, & stock handlers	359	318	18	182	101	61	40	41				
Service workers, exc. private hshld. ³	1 547	1 245	251	519	328	162	160	53				
Cleaning service workers	629	488	130	249	107	76	31	17				
Food service workers	430	352	42	156	114	41	67	25				
Health service workers	44	32	8	12	5	5						
Personal service workers	107	85	22	34	17	13	4					
Protective service workers	143	130	13	7	25	16	9					
Private household workers	21	15	6	8	18	11	7	11				
Female employed, 22 to 64 yrs. ²	7 988	6 414	1 394	2 068	1 707	928	759	245				
Prof., tech., and kindred workers	758	637	97	77	171	98	62	12				
Health workers, exc. practitioners	282	240	22	32	44	23	21					
Teachers, elem. and secondary	186	141	45	22	26	9	17	4				
Managers and admin., exc. farm	257	243	14	24	34	22	12	7				
Self-employed	86	80	6	8	7		7					
Sales workers	336	306	16	78	65	57	8	11				
Retail trade	268	242	12	64	16	16						
Clerical and kindred workers	1 876	1 713	163	355	323	210	113	31				
Bkpr., cashiers, & bank tellers	377	365	12	117	105	83	22					
Secretaries, steno., & typists	497	481	16	60	39	39		8				
Craftsmen and kindred workers	144	110	28	40	35	35		9				
Operatives, except transport	1 540	1 355	156	651	325	198	127	91				
Laundry & dry cleaning operatives ⁴	285	255	14	176	21	5	16					
Assemblers	407	330	73	152	80	45	35	28				
Pkrs. & wrappers, inc. meat & prod.	108	99		74	26	26		19				
Sewers, stitchers, & textile oper.	145	134	11	57	42	26	16	12				
Transport equipment operatives	53	41	12	18	6	6						
Laborers, except farm	90	90		36	24	9	15					
Service workers, exc. private hshld. ³	2 025	1 468	487	551	497	239	253	70				
Cleaning service workers	509	343	131	188	105	68	37	11				
Food service workers	629	556	65	180	134	76	53	24				
Health service workers	405	230	163	68	110	23	87	11				
Personal service workers	209	166	35	51	54	22	32					
Private household workers	847	409	408	220	219	46	169	6				

²Includes "farm workers" not shown separately. cases are included in the total but not in the distribution.

³Allocated cases are included in the total but not in the distribution.

⁴Includes "clothing ironers and pressers."

⁵"Protective service workers" and allocated

Table A-1. Selected Characteristics of Persons and Families by Residence in Census Tracts With a Poverty Rate of 20 Percent or More: 1970—Continued

(Excludes inmates of institutions, members of Armed Forces living in barracks, college students living in dormitories, and unrelated individuals under 14 years. Data based on 15 percent sample, see text. For minimum base for derived figures (percent, median, etc.) and meaning of symbols, see text.)

Phoenix	Neighborhood 01				Neighborhood 02				Persons of Spanish language
	All races	White	Negro	Persons of Spanish language	All races	White	Negro	Persons of Spanish language	
SELECTED OCCUPATIONS — Con.									
Income Below Poverty Level									
Male employed, 22 to 64 yrs. ²	1 564	1 226	213	602	421	242	154	163	
Prof., tech., and kindred workers	67	67	—	30	15	9	6	—	
Managers and admin., exc. farm	64	58	6	9	7	—	7	—	
Sales workers	61	45	16	14	19	5	6	—	
Clerical and kindred workers	95	85	10	20	—	—	—	—	
Craftsmen and kindred workers	170	158	5	91	42	32	10	9	
Operatives, except transport	212	169	15	73	44	10	34	5	
Transport equipment operatives	158	115	26	45	54	25	18	19	
Laborers, except farm	285	188	87	126	155	111	38	100	
Service workers, exc. private hshld	219	180	26	79	38	19	19	19	
Private household workers	8	8	—	8	7	—	7	—	
Female employed, 22 to 64 yrs. ²	1 314	821	436	291	309	91	214	38	
Prof., tech., and kindred workers	91	81	6	17	9	9	—	4	
Managers and admin., exc. farm	31	17	14	—	—	—	—	—	
Sales workers	26	26	—	5	—	—	—	—	
Clerical and kindred workers	144	130	14	63	43	14	29	—	
Craftsmen and kindred workers	32	25	7	8	—	—	—	—	
Operatives, except transport	255	198	41	102	80	41	39	24	
Transport equipment operatives	12	7	5	—	—	—	—	—	
Laborers, except farm	16	16	—	10	—	—	—	—	
Service workers, exc. private hshld	381	217	141	49	66	4	62	4	
Private household workers	319	104	201	37	111	23	84	6	
FAMILY STATUS AND AGE									
All Income Levels									
Both Sexes									
Head of family: 14 to 21 yrs.	978	799	154	389	144	51	79	35	
22 to 54 yrs.	10 485	8 504	1 662	4 071	3 132	1 951	1 143	800	
Wife of head: 14 to 21 yrs.	1 503	1 309	157	553	287	201	75	70	
22 to 54 yrs.	7 601	6 538	778	2 972	2 506	1 578	868	619	
Unrelated indiv.: 14 to 21 yrs.	1 010	858	46	105	63	32	31	—	
22 to 54 yrs.	5 337	4 446	708	631	465	308	157	51	
Female									
Head of family: 14 to 21 yrs.	200	140	60	52	35	—	35	—	
22 to 54 yrs.	2 488	1 665	743	954	510	181	329	67	
Unrelated indiv.: 14 to 21 yrs.	425	359	27	55	34	14	20	—	
22 to 54 yrs.	1 831	1 547	249	177	179	119	60	20	
Income Below Poverty Level									
Both Sexes									
Head of family: 14 to 21 yrs.	339	242	92	101	68	11	57	15	
22 to 54 yrs.	2 709	1 897	674	1 117	764	351	399	201	
Wife of head: 14 to 21 yrs.	310	225	76	123	60	33	27	35	
22 to 54 yrs.	1 331	1 077	178	597	418	226	175	123	
Unrelated indiv.: 14 to 21 yrs.	621	513	20	60	45	14	31	—	
22 to 54 yrs.	1 472	1 188	204	256	128	85	43	6	
Female									
Head of family: 14 to 21 yrs.	114	67	47	17	35	—	35	—	
22 to 54 yrs.	1 402	865	469	551	364	111	253	46	
Unrelated indiv.: 14 to 21 yrs.	238	210	7	23	34	14	20	—	
22 to 54 yrs.	567	450	103	95	95	65	30	6	

²Includes "farm workers" not shown separately.

Table A-2. Characteristics of the Population by Residence in Census Tracts With a Poverty Rate of 20 Percent or More: 1970

[Excludes inmates of institutions, members of Armed Forces living in barracks, college students living in dormitories, and unrelated individuals under 14 years. Data based on 15-percent sample, see text. For minimum base for derived figures (percent, median, etc.) and meaning of symbols, see text.]

Phoenix	Neighborhood 01				Neighborhood 02							Persons of Spanish language
	All races	White	Negro	Persons of Spanish language	All races	White	Negro	Persons of Spanish language	All races	White	Negro	
RELATIONSHIP TO HEAD												
All persons	76 076	62 133	11 686	28 063	20 263	11 848	8 016	4 924				
In households	74 808	61 043	11 653	27 868	20 221	11 836	7 986	4 924				
Head of household	27 330	22 581	4 091	6 920	5 726	3 592	2 047	1 094				
Family head	17 128	14 113	2 576	5 865	4 544	2 810	1 656	991				
65 years old and over	2 723	2 300	375	517	575	395	172	90				
Female	3 731	2 611	1 034	1 299	708	280	428	98				
Primary individual	10 202	8 468	1 515	1 055	1 182	782	391	103				
Female	4 888	4 081	734	577	588	380	204	36				
Related child under 18 years old	26 302	20 595	4 843	13 188	8 890	4 665	4 019	2 561				
Other relative of head	19 418	16 433	2 480	7 530	5 390	3 456	1 834	1 248				
Not related to head	1 758	1 434	239	230	215	123	86	21				
In group quarters	1 268	1 090	33	195	42	12	30	-				
AGE												
Male, all ages	37 174	30 571	5 401	13 561	9 939	5 822	3 901	2 437				
Under 3 years	2 548	2 019	435	1 276	694	411	244	218				
3 to 5 years	2 192	1 731	392	1 100	806	378	395	214				
6 to 13 years	6 011	4 670	1 155	2 921	2 045	1 053	949	559				
14 to 17 years	2 757	2 213	453	1 455	902	449	453	215				
18 to 21 years	2 460	2 046	288	1 017	591	323	254	183				
22 to 24 years	1 994	1 759	217	735	444	315	123	140				
25 to 34 years	4 451	3 862	371	1 539	1 030	608	398	250				
35 to 44 years	3 145	2 560	462	1 046	991	687	298	297				
45 to 54 years	3 461	2 843	568	947	879	627	238	180				
55 to 64 years	3 764	3 168	508	878	804	489	286	101				
65 years and over	4 391	3 700	552	647	753	482	263	80				
Median age	25.4	26.2	20.7	17.1	20.5	23.8	16.2	17.3				
Female, all ages	38 902	31 562	6 285	14 502	10 324	6 026	4 115	2 487				
Under 3 years	2 464	1 988	366	1 207	683	380	268	199				
3 to 5 years	2 090	1 619	391	962	649	373	263	198				
6 to 13 years	5 878	4 430	1 291	2 916	2 181	1 117	1 034	696				
14 to 17 years	2 723	2 250	389	1 436	976	525	438	270				
18 to 21 years	3 244	2 627	528	1 385	686	450	225	156				
22 to 24 years	1 975	1 673	216	781	408	201	182	103				
25 to 34 years	4 286	3 513	640	1 585	1 195	676	512	272				
35 to 44 years	3 461	2 724	634	1 247	1 004	676	307	299				
45 to 54 years	3 770	3 121	546	1 214	817	472	338	116				
55 to 64 years	3 949	3 282	634	974	955	663	279	111				
65 years and over	5 062	4 335	650	795	770	493	269	67				
Median age	26.5	27.4	23.5	19.1	20.9	23.5	18.0	15.2				
PLACE OF BIRTH												
Total population	76 076	62 133	11 686	28 063	20 263	11 848	8 016	4 924				
Born in State of residence	31 730	25 245	5 043	18 942	9 403	5 304	3 811	3 381				
Born in different State	31 347	25 796	5 191	4 821	8 153	5 020	3 105	690				
Northeast	3 334	3 230	104	68	363	333	30	4				
North Central	10 028	9 484	455	378	2 166	2 001	152	63				
South	12 235	7 892	4 266	2 075	4 438	1 654	2 780	243				
West	5 750	5 190	366	2 300	1 186	1 032	143	380				
Puerto Rico and outlying areas	24	24	-	24	15	15	-	15				
Foreign born	4 692	4 391	13	2 785	511	480	-	360				
Not reported and other	8 283	6 677	1 439	1 491	2 181	1 029	1 100	478				
RESIDENCE IN 1965												
Total, 5 years and over	68 118	55 897	10 287	24 190	18 025	10 620	7 096	4 294				
Some house as in 1970	27 610	22 423	4 480	11 088	8 018	4 933	2 936	2 069				
Different house in United States	31 751	26 437	4 355	11 088	7 724	4 562	3 065	1 721				
Some county	21 224	17 073	3 500	8 928	5 322	2 748	2 498	1 249				
Different county	10 527	9 364	855	2 160	2 402	1 814	567	472				
Some State	1 978	1 689	88	687	622	414	187	282				
Different State	8 549	7 675	767	1 473	1 780	1 400	380	190				
Northeast	719	696	23	44	166	101	65	12				
North Central	2 574	2 420	125	97	426	380	46	-				
South	1 619	1 364	248	347	391	221	170	48				
West	3 637	3 195	371	985	797	698	99	130				
Moved, residence not rptd., abroad	8 757	7 037	1 452	2 014	2 283	1 125	1 095	504				
SCHOOL ENROLLMENT												
All income levels												
Total enrolled, 3 to 21 yr. old	18 091	14 091	3 421	8 951	6 418	3 217	3 102	1 816				
Nursery school:												
Public	118	90	28	72	40	15	25	15				
Private	119	114	5	41	22	7	15	-				
Kindergarten:												
Public	724	563	129	373	192	96	96	80				
Private	118	111	7	56	29	29	-	10				
Elem. (1 to 8 yr.):												
Public	11 901	9 096	2 424	5 895	4 344	2 145	2 111	1 280				
Private	411	387	24	255	252	180	68	100				
High school (1 to 4 yr.):												
Public	3 577	2 771	708	1 804	1 327	626	694	275				
Private	428	383	17	222	35	17	18	17				
College	695	576	79	233	177	102	75	39				
Total enrolled, 3 to 21 yr. old	18 091	14 091	3 421	8 951	6 418	3 217	3 102	1 816				
3 to 5 years old	930	742	163	465	275	103	153	92				
6 to 13 years old	11 370	8 704	2 328	5 567	4 168	2 133	1 962	1 222				
14 and 15 years old	2 487	2 025	377	1 471	1 011	496	515	241				
16 and 17 years old	1 902	1 499	345	902	605	304	294	184				
18 to 21 years old	1 402	1 121	208	546	359	181	178	77				

Table A-2. Characteristics of the Population by Residence in Census Tracts With a Poverty Rate of 20 Percent or More: 1970-Continued

[Excludes inmates of institutions, members of Armed Forces living in barracks, college students living in dormitories, and unrelated individuals under 14 years. Data based on 15 percent sample, see text. For minimum base for derived figures (percent, median, etc.) and meaning of symbols, see text.]

Phoenix	Neighborhood 01				Neighborhood 02				All races	White	Negro	Persons of Spanish language
	All races	White	Negro	Persons of Spanish language	All races	White	Negro	Persons of Spanish language				
SCHOOL ENROLLMENT—												
Continued												
All Income Levels—Continued												
Percent enrolled, 3 to 21 yr. old	66.1	65.3	70.0	67.9	72.6	68.9	77.3	72.9				
3 to 5 years old	21.7	22.1	20.8	22.6	18.9	13.7	23.3	22.3				
6 to 13 years old	95.6	95.6	95.2	95.4	98.6	98.3	98.9	97.4				
14 and 15 years old	85.6	85.2	89.8	87.8	93.5	92.9	94.1	94.5				
16 and 17 years old	73.9	71.8	81.8	74.2	75.9	69.1	85.5	80.0				
18 to 21 years old	24.6	24.0	25.5	22.7	28.1	23.4	37.2	22.7				
Income Below Poverty Level												
Total enrolled, 3 to 21 yr. old	7 461	5 329	1 840	3 629	2 343	829	1 461	561				
Nursery school:												
Public	51	35	16	23	—	—	—	—				
Private	32	32	—	10	—	—	—	—				
Kindergarten:												
Public	363	272	66	184	82	32	50	32				
Private	34	27	7	20	8	8	—	—				
Elem. (1 to 8 yr.):												
Public	5 310	3 669	1 457	2 577	1 692	661	982	460				
Private	147	128	19	62	87	51	32	17				
High school (1 to 4 yr.):												
Public	1 259	943	275	664	465	77	388	52				
Private	85	75	—	48	—	—	—	—				
College	180	148	—	41	9	—	9	—				
Total enrolled, 3 to 21 yr. old	7 461	5 329	1 840	3 629	2 343	829	1 461	561				
3 to 5 years old	354	255	81	154	77	19	51	19				
6 to 13 years old	5 074	3 465	1 434	2 390	1 576	648	882	423				
14 and 15 years old	962	767	171	625	412	115	297	82				
16 and 17 years old	660	533	100	331	206	37	169	32				
18 to 21 years old	411	309	54	129	72	10	62	5				
Percent enrolled, 3 to 21 yr. old	69.8	70.4	69.5	72.2	73.6	68.4	77.1	72.4				
3 to 5 years old	21.7	23.5	18.0	21.3	13.5	8.1	16.5	...				
6 to 13 years old	94.9	94.8	94.6	94.9	97.9	97.4	98.1	96.1				
14 and 15 years old	84.3	85.3	89.1	85.4	93.4	...	94.3	...				
16 and 17 years old	75.3	75.4	73.5	75.6	76.0	...	94.4	...				
18 to 21 years old	24.2	25.3	15.4	21.0	24.7	...	32.5	...				
YEARS OF SCHOOL COMPLETED												
All Income Levels												
Male, 25 years old and over												
Elementary: 0 to 7 years	19 212	16 133	2 461	5 057	4 457	2 893	1 483	908				
8 years	6 378	5 021	1 092	2 577	1 670	970	675	532				
8 years	2 986	2 522	395	826	684	483	195	145				
High school: 1 to 3 years	3 301	2 805	397	609	1 041	728	305	123				
4 years	3 889	3 466	310	731	708	451	251	71				
College: 1 to 3 years	1 578	1 375	142	198	271	200	35	37				
4 years or more	1 080	944	125	116	83	61	22	—				
Median years of school completed	9.2	9.6	8.4	7.8	8.8	9.0	8.3	6.8				
Female, 25 years old and over												
Elementary: 0 to 7 years	20 528	16 975	3 104	5 815	4 741	2 980	1 705	865				
8 years	6 399	5 227	983	3 224	1 460	887	555	412				
8 years	3 627	3 026	537	1 128	864	580	280	203				
High school: 1 to 3 years	4 400	3 401	888	717	1 231	700	520	161				
4 years	4 198	3 630	502	640	868	626	230	78				
College: 1 to 3 years	1 262	1 132	117	67	271	166	105	11				
4 years or more	642	559	77	39	47	21	15	—				
Median years of school completed	9.2	9.2	9.1	7.2	9.1	9.1	9.1	8.1				
Income Below Poverty Level												
Male, 25 years old and over												
Less than 8 years	4 994	3 898	844	1 313	911	508	378	169				
8 to 11 years	2 462	1 785	514	871	458	243	196	133				
12 years or more	1 555	1 270	237	300	357	217	134	36				
	977	843	93	142	96	48	48	—				
Female, 25 years old and over												
Less than 8 years	6 625	4 939	1 462	2 076	1 452	746	685	212				
8 to 11 years	2 874	2 164	622	1 406	590	328	252	130				
12 years or more	2 613	1 888	620	536	642	280	351	68				
	1 138	887	220	134	220	136	82	14				
PERSONS 16 TO 21 YEARS OLD NOT IN SCHOOL												
All Income Levels												
Male												
Not high school graduate	1 989	1 666	240	822	496	283	199	153				
Employed or in Armed Forces	1 310	1 171	117	631	368	216	145	119				
Unemployed	835	776	43	443	175	111	57	64				
Not in labor force	131	115	16	43	33	23	10	18				
High school graduate	344	280	58	145	160	82	78	37				
Employed or in Armed Forces	679	495	123	191	128	67	54	34				
Unemployed	524	386	106	146	84	53	24	29				
Not in labor force	37	33	4	13	23	9	14	—				
	118	76	13	32	21	5	16	5				
Female												
Not high school graduate	2 984	2 474	445	1 347	614	445	152	155				
Employed or in Armed Forces	1 673	1 450	200	935	409	330	73	106				
Unemployed	439	374	65	231	76	61	15	21				
Not in labor force	111	99	12	56	11	11	—	6				
High school graduate	1 123	977	123	648	322	258	58	79				
Employed or in Armed Forces	1 311	1 024	245	412	205	115	79	49				
Unemployed	785	667	100	262	72	34	38	22				
Not in labor force	108	79	21	44	9	9	—	—				
	418	278	124	106	124	72	41	27				

Table A-2. Characteristics of the Population by Residence in Census Tracts With a Poverty Rate of 20 Percent or More: 1970—Continued

[Excludes inmates of institutions, members of Armed Forces living in barracks, college students living in dormitories, and unrelated individuals under 14 years. Data based on 15-percent sample, see text. For minimum base for derived figures (percent, median, etc.) and meaning of symbols, see text]

Phoenix	Neighborhood 01				Neighborhood 02							
	All races	White	Negro	Persons of Spanish language	All races	White	Negro	Persons of Spanish language	All races	White	Negro	Persons of Spanish language
PERSONS 16 TO 21 YEARS OLD NOT IN SCHOOL—Con.												
Income Below Poverty Level												
Male	673	510	100	284	128	58	70	42				
Not high school graduate	446	385	50	220	84	47	37	27				
Employed or in Armed Forces	236	213	18	101	38	21	17	16				
Unemployed	30	24	6	24	5	—	—	—				
Not in labor force	180	148	26	95	41	21	20	11				
High school graduate	227	125	50	64	44	11	33	15				
Employed or in Armed Forces	171	98	41	54	26	11	15	15				
Unemployed	—	—	—	—	10	—	—	10				
Not in labor force	56	27	9	10	8	—	—	8				
Female	830	575	233	307	156	81	69	45				
Not high school graduate	552	440	106	270	109	68	35	30				
Employed or in Armed Forces	103	85	18	40	14	5	9	5				
Unemployed	41	34	7	29	—	—	—	—				
Not in labor force	408	321	81	201	95	63	26	25				
High school graduate	278	135	127	37	47	13	34	15				
Employed or in Armed Forces	133	91	42	15	8	—	8	—				
Unemployed	28	18	10	6	—	—	—	—				
Not in labor force	117	26	75	16	39	13	26	15				
MARRIED COUPLES AND CHILDREN												
All Income Levels												
Married couples	12 919	11 216	1 376	4 524	3 630	2 423	1 142	859				
With own household	12 644	10 972	1 345	4 341	3 589	2 393	1 131	849				
Without own household	275	244	31	183	41	30	11	10				
With own children under 18 yr	6 598	5 649	701	3 147	2 226	1 422	760	693				
With own children under 6 yr	4 128	3 548	416	2 021	1 315	843	434	443				
With husband under 45 years	6 638	5 783	648	2 776	1 993	1 316	640	592				
With own children under 18 yr	4 904	4 257	489	2 317	1 709	1 104	575	561				
Related child, under 18 yr	26 302	20 595	4 843	13 188	8 890	4 665	4 019	2 561				
Living with both parents	16 548	13 996	1 974	8 548	6 391	3 792	2 399	2 211				
Percent living with both parents	62.9	68.0	40.8	64.8	71.9	81.3	59.7	86.3				
Living with mother only	7 910	5 233	2 486	3 692	1 967	614	1 353	289				
Living with father only	717	495	177	284	241	89	152	36				
Living with neither parent	1 127	871	206	664	291	170	115	25				
Income Below Poverty Level												
Related child, under 18 yr	10 538	7 413	2 676	5 211	3 292	1 290	1 911	809				
Living with both parents	4 452	3 524	690	2 316	1 589	826	678	570				
Percent living with both parents	42.2	47.5	25.8	44.4	48.3	64.0	35.5	70.5				
Living with mother only	5 226	3 295	1 771	2 429	1 582	425	1 157	235				
Living with father only	313	193	91	116	36	25	11	—				
Living with neither parent	547	401	124	350	85	14	65	4				
FERTILITY BY AGE OF WOMAN												
All Income Levels												
Women ever married:												
15 to 24 years	3 540	3 085	346	1 416	766	450	280	174				
25 to 34 years	3 617	2 979	519	1 392	1 116	633	476	255				
35 to 44 years	3 151	2 446	608	1 143	983	668	294	291				
Children ever born per 1,000 women ever married:												
15 to 24 years	1 247	1 189	1 668	1 588	1 547	1 313	1 911	1 690				
25 to 34 years	2 878	2 843	3 108	3 362	3 648	3 174	4 288	3 455				
35 to 44 years	4 075	3 980	4 477	4 915	4 028	3 945	4 167	4 804				
Income Below Poverty Level												
Women ever married:												
15 to 24 years	748	577	140	304	163	85	78	63				
25 to 34 years	1 013	735	247	392	321	140	174	65				
35 to 44 years	1 043	735	253	402	249	128	111	69				
Children ever born per 1,000 women ever married:												
15 to 24 years	1 889	1 789	2 143	2 303	1 988				
25 to 34 years	3 767	3 785	3 729	4 196	4 682	4 450	4 937	...				
35 to 44 years	5 135	5 082	5 482	6 194	5 265				

Table A-3. Employment Characteristics of the Population by Residence in Census Tracts With a Poverty Rate of 20 Percent or More: 1970

[Excludes inmates of institutions, members of Armed Forces living in barracks, college students living in dormitories, and unrelated individuals under 14 years. Data based on 15-percent sample, see text. For minimum base for derived figures (percent, median, etc.) and meaning of symbols, see text.]

Phoenix	Neighborhood 01				Neighborhood 02				All races	White	Negro	Persons of Spanish language
	All races	White	Negro	Persons of Spanish language	All races	White	Negro	Persons of Spanish language				
EMPLOYMENT STATUS												
All Income Levels												
Male												
Total, 16 years old and over	24 925	20 980	3 165	7 404	5 869	3 754	2 014	1 328				
Armed Forces	147	114	33	53	28	4	24	-				
Civilian labor force	16 730	14 263	1 932	5 556	4 277	2 853	1 323	1 087				
Employed	15 534	13 271	1 742	5 251	4 009	2 657	1 251	1 030				
At work	15 089	12 861	1 707	5 093	3 875	2 565	1 220	1 017				
Full time	12 585	10 742	1 352	4 211	3 447	2 309	1 068	917				
With a job but not at work	445	410	35	158	134	92	31	13				
Unemployed	1 196	992	190	305	268	196	72	57				
Percent unemployed	7.1	7.0	9.8	5.5	6.3	6.9	5.4	5.2				
Not in labor force	8 048	6 603	1 200	1 795	1 564	897	667	241				
Enrolled in school	1 029	797	179	445	327	178	149	84				
Other	7 019	5 806	1 021	1 350	1 237	719	518	157				
65 years old and over	3 562	3 020	467	530	603	363	240	55				
16 to 24 years old ¹	5 713	4 847	704	2 347	1 412	861	531	420				
Employed	3 671	3 240	357	1 516	807	545	242	252				
Unemployed	416	365	51	153	85	54	31	40				
Not in labor force	1 548	1 181	279	649	507	258	249	128				
25 to 64 years old ¹	14 821	12 433	1 909	4 410	3 704	2 411	1 220	828				
Employed	11 070	9 387	1 300	3 618	3 071	2 012	986	753				
Unemployed	758	605	139	152	173	132	41	17				
Not in labor force	2 924	2 388	454	616	445	267	178	58				
Family head, 25 to 64 years old ¹	9 304	7 940	1 096	3 402	3 012	1 996	960	728				
Employed	7 472	6 407	807	2 882	2 583	1 709	818	671				
Unemployed	372	323	44	106	117	90	27	14				
Not in labor force	1 405	1 166	234	390	297	197	100	43				
Female												
Total, 16 years old and over	27 061	22 320	4 071	8 601	6 255	3 848	2 302	1 257				
Civilian labor force	10 814	8 739	1 845	2 988	2 198	1 197	970	349				
Employed	10 106	8 162	1 722	2 776	2 083	1 135	917	337				
At work	9 779	7 868	1 693	2 706	2 013	1 096	886	321				
Full time	7 190	5 948	1 115	1 957	1 427	795	605	204				
With a job but not at work	327	294	29	70	70	39	31	16				
Unemployed	708	577	123	212	115	62	53	12				
Percent unemployed	6.5	6.6	6.7	7.1	5.2	5.2	5.5	3.4				
Not in civilian labor force	16 247	13 581	2 226	5 613	4 057	2 651	1 332	908				
Enrolled in school	1 283	991	218	561	423	155	268	100				
Other	14 964	12 590	2 008	5 052	3 634	2 496	1 064	808				
65 years old and over	4 554	3 928	569	734	644	461	179	59				
With own children under 6 years old	5 375	4 295	852	2 556	1 736	970	722	460				
Percent in civilian labor force	33.5	32.0	43.1	30.7	29.6	21.6	41.6	11.7				
With own children 6 to 17 years old	6 360	5 044	1 094	2 960	2 122	1 136	975	506				
Percent in civilian labor force	40.7	38.1	52.8	32.6	40.9	34.9	47.8	29.4				
16 to 24 years old	6 533	5 345	967	2 786	1 514	868	597	392				
Employed	2 710	2 239	405	1 031	441	227	207	109				
Unemployed	338	283	47	148	30	20	10	6				
Not in civilian labor force	3 485	2 823	515	1 607	1 043	621	380	277				
25 to 64 years old	15 468	12 640	2 454	5 020	3 971	2 487	1 436	798				
Employed	6 940	5 543	1 253	1 694	1 524	876	628	220				
Unemployed	345	286	59	59	85	42	43	6				
Not in civilian labor force	8 181	6 811	1 142	3 267	2 362	1 569	765	572				
Family head, 25 to 64 years old	2 877	1 990	819	1 045	571	217	354	67				
Employed	1 455	978	443	464	239	86	153	19				
Unemployed	47	24	23	6	8	8	8	-				
Not in civilian labor force	1 375	988	353	575	324	123	201	48				
Wife of head, 25 to 64 years old	8 541	7 321	963	3 138	2 826	1 878	908	637				
Employed	3 134	2 557	495	885	999	606	373	174				
Unemployed	169	142	27	35	48	5	43	-				
Not in civilian labor force	5 238	4 622	441	2 218	1 779	1 267	492	463				
Income Below Poverty Level												
Male												
Total, 16 years old and over	6 493	5 121	1 021	1 948	1 231	636	570	266				
Armed Forces	-	-	-	-	-	-	-	-				
Civilian labor force	2 646	2 128	322	1 034	609	315	269	194				
Employed	2 345	1 855	294	902	537	274	238	194				
At work	2 269	1 800	273	875	492	249	229	181				
Full time	1 658	1 283	183	626	371	212	153	154				
Unemployed	301	273	28	132	72	41	31	-				
Percent unemployed	11.4	12.8	8.7	12.8	11.8	13.0	11.5	-				
Not in labor force	3 847	2 993	699	914	622	321	301	72				
Enrolled in school	368	279	53	135	109	39	70	20				
Other	3 479	2 714	646	779	513	282	231	52				
65 years old and over	1 676	1 338	284	307	327	193	134	30				

¹Includes members of Armed Forces not living in barracks and not shown separately.

Table A-3. Employment Characteristics of the Population by Residence in Census Tracts With a Poverty Rate of 20 Percent or More: 1970—Continued

(Excludes inmates of institutions, members of Armed Forces living in barracks, college students living in dormitories, and unrelated individuals under 14 years. Data based on 15-percent sample, see text. For minimum base for derived figures (percent, median, etc.) and meaning of symbols, see text)

Phoenix	Neighborhood 01				Neighborhood 02				Persons of Spanish language
	All races	White	Negro	Persons of Spanish language	All races	White	Negro	Persons of Spanish language	
EMPLOYMENT STATUS—Continued									
Income Below Poverty Level—Con.									
Male—Continued									
16 to 24 years old ¹	1 499	1 223	177	635	320	128	192	97	
Employed	794	678	79	336	161	81	80	75	
Unemployed	105	93	12	64	19	5	14	—	
Not in labor force	600	452	86	235	140	42	98	22	
25 to 64 years old ¹	3 152	2 439	549	964	550	296	229	139	
Employed	1 391	1 062	204	524	361	193	143	119	
Unemployed	196	180	16	68	43	26	17	—	
Not in labor force	1 565	1 197	329	372	146	77	69	20	
Family head, 25 to 64 years old ¹	1 629	1 264	282	699	435	252	169	130	
Employed	927	708	136	418	307	168	125	119	
Unemployed	107	107	—	53	35	26	9	—	
Not in labor force	595	449	146	228	93	58	35	11	
Female									
Total, 16 years old and over	8 360	6 187	1 861	2 777	1 810	897	886	311	
Civilian labor force	1 970	1 283	606	494	404	113	287	49	
Employed	1 741	1 127	533	399	387	96	287	43	
At work	1 693	1 094	522	399	371	86	281	37	
Full time	1 010	706	265	241	197	42	155	10	
With a job but not at work	48	33	11	—	16	10	6	6	
Unemployed	229	156	73	95	17	—	—	—	
Percent unemployed	11.6	12.2	12.0	19.2	4.2	7.84	5.99	26.2	
Not in civilian labor force	6 390	4 904	1 255	2 283	1 406	26	118	26	
Enrolled in school	495	354	98	245	144	758	481	236	
Other	5 895	4 550	1 157	2 038	1 262	223	97	25	
65 years old and over	2 042	1 657	348	461	324	—	—	—	
With own children under 6 years old	1 732	1 198	446	762	569	247	305	153	
Percent in civilian labor force	19.9	16.8	29.1	16.9	29.0	18.6	37.7	15.7	
With own children 6 to 17 years old	2 309	1 642	581	1 055	716	257	448	142	
Percent in civilian labor force	26.5	21.2	42.3	20.7	29.3	16.0	36.8	11.3	
16 to 24 years old	1 735	1 248	399	701	358	151	201	99	
Employed	493	381	90	119	45	11	34	11	
Unemployed	118	96	22	62	—	—	—	—	
Not in civilian labor force	1 124	771	287	520	313	140	167	88	
25 to 64 years old	4 417	3 184	1 066	1 579	1 078	523	538	187	
Employed	1 127	668	412	254	300	85	211	32	
Unemployed	86	52	34	28	17	—	—	6	
Not in civilian labor force	3 204	2 464	620	1 297	761	421	327	149	
Family head, 25 to 64 years old	1 467	924	487	578	385	124	261	46	
Employed	462	253	187	138	112	31	81	4	
Unemployed	34	11	23	6	—	—	—	—	
Not in civilian labor force	971	660	277	434	273	93	180	42	
Wife of head, 25 to 64 years old	1 603	1 257	266	689	472	253	202	114	
Employed	265	116	141	63	130	32	94	22	
Unemployed	27	16	11	16	5	5	—	—	
Not in civilian labor force	1 311	1 125	114	610	337	216	108	92	
PLACE OF WORK									
All workers ²	25 235	21 031	3 465	7 966	5 972	3 688	2 163	1 349	
Inside SMSA of residence	21 351	18 107	2 663	7 196	5 182	3 376	1 685	1 226	
In county of residence	21 351	18 107	2 663	7 196	5 182	3 376	1 685	1 226	
In central city	19 242	16 293	2 434	6 421	4 355	2 870	1 382	1 033	
Outside county of residence	—	—	—	—	—	—	—	—	
In central city	—	—	—	—	—	—	—	—	
Outside SMSA of residence	284	203	23	138	63	28	35	11	
Workers below poverty level ²	4 026	2 947	806	1 317	873	335	520	218	
Inside SMSA of residence	3 243	2 386	645	1 101	661	293	350	201	
In county of residence	3 243	2 386	645	1 101	661	293	350	201	
In central city	2 913	2 143	586	981	574	270	286	189	
Outside county of residence	—	—	—	—	—	—	—	—	
In central city	—	—	—	—	—	—	—	—	
Outside SMSA of residence	86	55	—	46	—	—	—	—	
MEANS OF TRANSPORTATION TO WORK									
All workers	25 235	21 031	3 465	7 966	5 972	3 688	2 163	1 349	
Private automobile, driver	16 145	13 568	2 220	5 124	4 470	2 734	1 632	1 042	
Private automobile, passenger	3 402	2 923	439	1 465	727	447	273	232	
Bus, streetcar, or subway	1 847	1 172	505	511	198	90	104	18	
Walked only	2 616	2 312	200	698	349	272	71	29	
Worked at home	658	560	49	109	123	91	32	11	
Other means	567	496	52	59	105	54	51	17	
Workers below poverty level	4 026	2 947	806	1 317	873	335	520	218	
Private automobile, driver	2 077	1 589	407	688	599	232	359	171	
Private automobile, passenger	614	447	139	212	112	44	68	37	
Bus, streetcar, or subway	529	285	155	136	55	5	46	5	
Walked only	603	483	63	243	64	27	31	5	
Worked at home	97	74	17	21	27	27	16	—	
Other means	106	69	25	17	16	—	—	—	

¹Includes members of Armed Forces not living in barracks and not shown separately. ²Includes "Place of work not reported" not shown separately.

Table A-4. Selected Occupations of Employed Persons by Residence in Census Tracts With a Poverty Rate of 20 Percent or More: 1970

[Excludes inmates of institutions, members of Armed Forces living in barracks, college students living in dormitories, and unrelated individuals under 14 years. Data based on 15 percent sample, see text. For minimum base for derived figures (percent, median, etc.) and meaning of symbols, see text.]

Phoenix	Neighborhood 01				Neighborhood 02				All races	White	Negro	Persons of Spanish language
	All races	White	Negro	Persons of Spanish language	All races	White	Negro	Persons of Spanish language				
ALL INCOME LEVELS												
Total employed, 16 yr. & over ¹	25 640	21 433	3 464	8 027	6 092	3 792	2 168	1 367				
Prof., tech., and kindred workers	1 914	1 631	231	285	393	232	144	18				
Health workers, except practitioners	383	296	57	47	97	39	52	6				
Teachers, elem. and secondary	279	209	70	29	59	27	32	4				
Managers and admin., exc. farm	1 238	1 154	84	122	233	153	68	33				
Self-employed	298	281	17	46	130	87	31	16				
Sales workers	1 101	985	92	270	199	162	29	38				
Retail trade	644	552	68	177	113	90	15	12				
Clerical and kindred workers	3 694	3 315	352	854	606	402	183	111				
Postal clerks and mail carriers	165	146	19	34	18	14	4	14				
Shipping, receiving, and stock clerks.	154	139	6	47	45	28	17	11				
Bkpr., cashiers, & bank tellers	563	538	25	158	165	135	30	4				
Craftsmen and kindred workers	3 061	2 729	241	1 032	1 010	763	234	268				
Construction craftsmen	973	875	70	364	267	218	43	77				
Mechanics and repairmen	662	600	31	193	329	245	84	76				
Operatives, except transport	4 487	3 837	484	1 934	1 048	686	355	343				
Assemblers	678	552	122	280	155	90	65	42				
Checkers, exam., & inspectors; mfg.	117	107	10	61	39	29	10	11				
Pkrs. & wrappers, inc. meat & prod.	257	217	8	171	73	73	23	12				
Sewers, stitchers, & textile oper.	205	194	11	93	49	26	23	12				
Transport equipment operatives	1 455	1 226	186	420	447	251	175	66				
Truck drivers	769	604	126	275	226	114	112	27				
Laborers, except farm	2 283	1 881	345	1 184	671	420	233	263				
Construction	568	479	89	360	247	171	76	114				
Freight, material, and stock handlers	553	493	32	288	139	72	67	46				
Service workers, exc. private hshld. ²	4 633	3 585	897	1 346	1 083	552	520	164				
Cleaning service workers	1 444	1 078	317	560	265	162	103	28				
Food service workers	1 432	1 229	139	440	357	192	154	82				
Health service workers	581	370	195	108	145	52	93	19				
Personal service workers	407	323	76	85	87	35	52	-				
Protective service workers	205	178	20	12	57	40	17	-				
Private household workers	982	487	461	250	261	57	200	17				
Female employed, 16 yr. & over¹	10 106	8 162	1 722	2 776	2 083	1 135	917	337				
Prof., tech., and kindred workers	882	740	118	84	193	98	84	12				
Health workers, except practitioners	324	274	30	39	62	23	39	-				
Teachers, elem. and secondary	192	147	45	22	30	9	21	4				
Managers and admin., exc. farm	292	273	19	27	38	22	12	7				
Self-employed	89	83	6	11	11	-	7	-				
Sales workers	413	371	28	93	73	57	16	11				
Retail trade	327	289	24	79	24	16	8	-				
Clerical and kindred workers	2 607	2 330	265	600	468	299	162	72				
Bkpr., cashiers, & bank tellers	458	438	20	137	122	92	30	4				
Secretaries, steno., & typists	743	713	24	145	69	69	-	24				
Craftsmen and kindred workers	197	160	31	58	40	40	-	14				
Operatives, except transport	2 034	1 759	238	919	397	259	138	113				
Laundry & dry cleaning operatives ³	343	313	14	212	43	27	16	22				
Assemblers	531	427	100	227	89	54	35	28				
Pkrs. & wrappers, inc. meat & prod.	149	140	-	109	32	32	-	19				
Sewers, stitchers, & textile oper.	182	171	11	82	42	26	16	12				
Transport equipment operatives	60	48	12	18	6	6	-	-				
Laborers, except farm	110	110	-	49	24	9	15	-				
Service workers, exc. private hshld. ⁴	2 484	1 847	549	659	593	291	297	94				
Cleaning service workers	606	417	151	229	127	68	59	11				
Food service workers	756	675	65	203	162	104	53	40				
Health service workers	521	322	187	96	140	47	93	19				
Personal service workers	265	213	44	51	70	22	48	-				
Private household workers	948	465	449	242	243	46	193	6				
INCOME BELOW POVERTY LEVEL												
Total employed, 16 yr. & over ¹	4 086	2 982	827	1 301	924	370	525	237				
Prof., tech., and kindred workers	204	189	11	68	24	18	6	4				
Managers and admin., exc. farm	120	85	35	12	7	-	7	-				
Sales workers	141	125	16	34	27	5	14	-				
Clerical and kindred workers	423	356	55	111	66	14	52	-				
Craftsmen and kindred workers	281	240	12	137	53	37	16	14				
Operatives, except transport	621	483	86	242	167	56	111	43				
Transport equipment operatives	212	164	31	71	65	25	29	19				
Laborers, except farm	456	337	103	193	193	138	49	117				
Service workers, exc. private hshld	937	670	222	217	147	23	124	23				
Private household workers	371	126	227	63	135	23	108	6				
Female employed, 16 yr. & over¹	1 741	1 127	533	399	387	96	287	43				
Prof., tech., and kindred workers	111	101	6	17	9	9	-	4				
*Managers and admin., exc. farm	46	27	19	3	-	-	-	-				
Sales workers	50	50	-	20	8	-	8	-				
Clerical and kindred workers	258	207	39	78	66	14	52	-				
Craftsmen and kindred workers	32	25	7	8	5	5	-	5				
Operatives, except transport	317	239	54	134	91	41	50	24				
Transport equipment operatives	19	14	5	-	-	-	-	-				
Laborers, except farm	23	23	-	10	-	-	-	-				
Service workers, exc. private hshld	512	314	175	65	80	4	76	4				
Private household workers	357	118	221	55	128	23	101	6				

¹Includes "farm workers" not shown separately. ²Allocated cases included in total but not in distribution. ³Includes "clothing ironers and pressers." ⁴"Protective service workers" and allocated cases included in total but not in distribution.

Table A-5. Income Characteristics in 1969 of Families and Unrelated Individuals by Residence in Census Tracts With a Poverty Rate of 20 Percent or More: 1970

(Excludes inmates of institutions, members of Armed Forces living in barracks, college students living in dormitories, and unrelated individuals under 14 years. Data based on 15-percent sample, see text. For minimum base for derived figures (percent, median, etc.) and meaning of symbols, see text)

Phoenix	Neighborhood 01				Neighborhood 02				All races	White	Negro	Persons of Spanish language
	All races	White	Negro	Persons of Spanish language	All races	White	Negro	Persons of Spanish language				
INCOME OF FAMILIES AND UNRELATED INDIVIDUALS												
All families	17 128	14 113	2 576	5 865	4 544	2 810	1 656	991				
Less than \$2,000	2 164	1 581	532	769	465	238	219	63				
\$2,000 to \$3,999	3 392	2 556	702	1 065	799	394	399	180				
\$4,000 to \$5,999	3 315	2 734	495	1 289	804	452	339	185				
\$6,000 to \$7,999	2 882	2 534	284	1 044	898	585	306	229				
\$8,000 to \$9,999	2 097	1 816	242	704	683	485	188	147				
\$10,000 to \$11,999	1 374	1 201	147	506	335	289	46	59				
\$12,000 to \$14,999	1 039	913	100	297	303	200	97	56				
\$15,000 to \$19,999	649	585	51	149	213	142	51	66				
\$20,000 to \$24,999	129	106	23	8	20	20	—	6				
\$25,000 or more	87	87	—	34	24	5	11	—				
Median family income	\$5 815	\$6 146	\$4 218	\$5 704	\$6 454	\$7 097	\$5 239	\$6 590				
Mean family income	\$6 635	\$6 931	\$5 186	\$6 381	\$6 965	\$7 400	\$6 041	\$7 029				
Families with female head												
All families	3 731	2 611	1 034	1 299	708	280	428	98				
Less than \$1,000	412	267	118	135	116	36	80	—				
\$1,000 to \$1,999	552	336	210	227	57	33	24	13				
\$2,000 to \$2,999	616	418	176	246	226	60	166	31				
\$3,000 to \$3,999	604	419	166	179	89	54	35	40				
\$4,000 to \$5,999	703	529	169	243	119	17	102	4				
\$6,000 to \$7,999	390	307	76	114	47	31	16	4				
\$8,000 to \$9,999	204	136	68	63	19	19	—	—				
\$10,000 to \$14,999	189	138	51	74	30	25	5	6				
\$15,000 and over	61	61	—	18	5	5	—	—				
Median family income	\$3 473	\$3 679	\$3 078	\$3 232	\$2 801	\$3 204	\$2 663	...				
Mean family income	\$4 184	\$4 422	\$3 726	\$4 023	\$3 457	\$4 273	\$2 923	...				
All unrelated individuals												
All families	13 228	10 992	1 787	1 480	1 439	917	507	124				
Less than \$1,000	2 728	2 158	411	488	394	201	178	14				
\$1,000 to \$1,999	3 517	2 773	597	412	331	230	101	22				
\$2,000 to \$2,999	1 899	1 566	265	228	248	143	105	27				
\$3,000 to \$3,999	1 305	1 086	175	99	122	91	31	15				
\$4,000 to \$5,999	1 716	1 528	172	146	163	119	91	10				
\$6,000 to \$7,999	1 116	1 036	73	53	118	82	36	30				
\$8,000 to \$9,999	421	381	40	24	32	20	12	6				
\$10,000 to \$14,999	455	393	54	30	14	14	—	—				
\$15,000 and over	71	71	—	—	17	17	—	—				
Median income	\$2 194	\$2 361	\$1 808	\$1 612	\$1 983	\$2 192	\$1 748	...				
Mean income	\$3 110	\$3 273	\$2 455	\$2 166	\$2 676	\$2 998	\$2 172	...				
TYPE OF INCOME FOR FAMILIES AND UNRELATED INDIVIDUALS												
All families	17 128	14 113	2 576	5 865	4 544	2 810	1 656	991				
With earnings	14 350	11 928	2 046	5 124	3 981	2 458	1 453	865				
Mean earnings	\$6 756	\$7 027	\$5 337	\$6 514	\$7 214	\$7 632	\$6 273	\$7 510				
Percent below poverty level	18.0	15.7	28.2	21.2	19.2	12.8	30.7	18.6				
Head 65 years and over	1 338	1 072	231	273	282	206	68	32				
Mean earnings	\$4 724	\$5 125	\$3 117	\$3 914	\$4 901	\$4 910	244	130				
With Social Security income	4 283	3 616	619	1 011	837	593	244	130				
Mean Social Security income	\$1 560	\$1 576	\$1 420	\$1 445	\$1 465	\$1 585	\$1 171	...				
Percent below poverty level	24.5	22.2	37.0	33.1	30.9	23.9	48.0	83				
Head 65 years and over	2 333	2 012	298	339	452	341	111	...				
Mean Social Security income	\$1 678	\$1 727	\$1 336	\$1 502	\$1 732	\$1 790				
With public assistance income	2 486	1 581	810	1 024	530	253	277	99				
Mean public assistance income	\$1 242	\$1 232	\$1 300	\$1 310	\$1 181	\$1 101	\$1 253	...				
Percent below poverty level	65.5	63.0	69.1	68.3	71.3	58.9	82.7	...				
Head 65 years and over	415	263	114	157	108	50	58	18				
Mean public assistance income	\$953	\$1 049	...	\$1 140				
With other income	4 171	3 656	468	816	794	587	201	110				
Mean other income	\$1 661	\$1 738	\$1 084	\$1 526	\$1 355	\$1 393	\$1 278	...				
Percent below poverty level	17.7	15.8	32.9	27.9	18.0	8.9	45.3	...				
Head 65 years and over	1 440	1 306	124	138	195	181	14	39				
Mean other income	\$2 001	\$2 074	...	\$2 136	\$1 453	\$1 478				
Families with female head												
All families	3 731	2 611	1 034	1 299	708	280	428	98				
With earnings	2 638	1 918	686	917	490	176	314	31				
Mean earnings	\$4 091	\$4 180	\$3 898	\$3 877	\$3 396	\$4 925	\$2 538	...				
Percent below poverty level	33.9	30.1	42.9	35.2	56.9	33.0	70.4	...				
Head 65 years and over	266	199	67	69	39	25	14	—				
Mean earnings	\$3 962	\$4 308				
With Social Security income	1 048	836	200	291	131	74	57	31				
Mean Social Security income	\$1 424	\$1 449	\$1 222	\$1 404				
Percent below poverty level	25.8	20.2	44.5	35.4				
Head 65 years and over	340	282	58	41	61	50	11	31				
Mean Social Security income	\$1 468	\$1 561				
With public assistance income	1 458	807	602	577	322	113	209	48				
Mean public assistance income	\$1 403	\$1 436	\$1 384	\$1 491	\$1 363	...	\$1 314	...				
Percent below poverty level	74.2	72.7	74.1	78.3	89.4	...	95.7	...				
Head 65 years and over	183	93	84	46	37	12	25	12				
Mean public assistance income	\$904				
With other income	878	714	154	273	139	47	92	...				
Mean other income	\$1 456	\$1 620	\$656	\$1 473	\$1 314				
Percent below poverty level	33.3	28.7	54.5	38.1	60.4				
Head 65 years and over	207	173	34	30	12	12	—	—				
Mean other income	\$1 857	\$2 114				

Table A-5. Income Characteristics in 1969 of Families and Unrelated Individuals by Residence in Census Tracts With a Poverty Rate of 20 Percent or More: 1970—Continued

Excludes inmates of institutions, members of Armed Forces living in barracks, college students living in dormitories, and unrelated individuals under 14 years. Data based on 10 percent sample, see text. For minimum base for derived figures (percent, median, etc.) and meaning of symbols, see text

Phoenix	Neighborhood 01				Neighborhood 02				All races	White	Negro	Persons of Spanish language
	All races	White	Negro	Persons of Spanish language	All races	White	Negro	Persons of Spanish language				
TYPE OF INCOME FOR FAMILIES AND UNRELATED INDIVIDUALS—Continued												
All unrelated individuals	13 228	10 992	1 787	1 480	1 439	917	507	124				
With earnings	7 435	6 246	905	695	775	544	231	88				
Mean earnings	\$4 018	\$4 161	\$3 571	\$3 314	\$3 509	\$3 548	\$3 419	...				
Percent below poverty level	22.9	21.5	24.1	28.8	21.4	21.1	22.1	...				
65 years and over	819	676	98	33	128	63	65	8				
Mean earnings	\$2 485	\$2 662				
Percent below poverty level	27.6	22.9				
With Social Security income	4 416	3 828	528	383	459	288	167	24				
Mean Social Security income	\$1 044	\$1 054	\$1 015	\$1 013	\$1 038	\$1 001	\$1 125	...				
Percent below poverty level	56.4	54.0	68.9	61.1	64.5	66.7	59.9	...				
65 years and over	3 415	2 995	360	267	398	256	138	24				
Mean Social Security income	\$1 029	\$1 035	\$1 036	\$999	\$1 002	\$983	\$1 065	...				
With public assistance income	1 831	1 316	432	397	213	114	99	8				
Mean public assistance income	\$748	\$719	\$793	\$721	\$658				
Percent below poverty level	86.6	84.0	91.7	83.9	86.9				
65 years old and over	1 005	778	188	233	117	69	48	8				
Mean public assistance income	\$768	\$739	\$836	\$715				
With other income	3 685	3 327	319	203	311	246	65	25				
Mean other income	\$1 435	\$1 505	\$865	\$1 125	\$1 655	\$1 872				
Percent below poverty level	28.5	27.8	34.5	55.2	25.7	32.5				
65 years old and over	1 801	1 667	128	81	144	112	32	...				
Mean other income	\$1 540	\$1 587	\$2 002				
WEEKS WORKED												
All Income Levels												
Male family heads	13 397	11 502	1 542	4 566	3 836	2 530	1 228	893				
Worked in 1969	10 753	9 268	1 155	3 959	3 269	2 129	1 070	818				
50 to 52 weeks	6 453	5 617	678	2 479	2 263	1 497	702	627				
40 to 49 weeks	2 421	2 124	218	911	627	413	214	158				
27 to 39 weeks	804	630	99	264	184	110	74	12				
26 weeks or less	1 075	897	160	305	195	109	80	21				
Did not work in 1969	2 644	2 234	387	607	567	401	158	75				
Female family heads	3 731	2 611	1 034	1 299	708	280	428	98				
Worked in 1969	2 007	1 393	580	646	410	114	294	19				
50 to 52 weeks	968	711	234	351	192	68	124	8				
40 to 49 weeks	386	244	131	106	80	11	69	11				
27 to 39 weeks	201	154	47	51	4				
26 weeks or less	452	284	168	138	134	37	97	...				
Did not work in 1969	1 724	1 218	454	653	298	164	134	79				
Income Below Poverty Level												
Male family heads	2 624	2 069	444	1 065	683	392	277	192				
Worked in 1969	1 460	1 167	200	676	438	238	194	145				
50 to 52 weeks	536	420	81	255	199	120	79	98				
Did not work in 1969	1 164	902	244	389	245	154	83	47				
Female family heads	1 811	1 112	625	694	479	144	335	59				
Worked in 1969	685	401	262	202	248	47	201	4				
50 to 52 weeks	228	156	54	92	98	16	82	4				
Did not work in 1969	1 126	711	363	492	231	97	134	55				
FAMILIES BY NUMBER OF EARNERS												
No earners	2 778	2 185	530	741	563	352	203	126				
Mean family income	\$2 402	\$2 652	\$1 481	\$1 685	\$2 188	\$2 612	\$1 540	...				
Percent below poverty level	66.9	59.7	92.8	90.8	70.3	63.1	81.8	...				
1 earner	6 466	5 337	978	2 162	1 845	1 173	655	386				
Mean family income	\$5 719	\$5 967	\$4 494	\$5 316	\$6 393	\$6 955	\$5 350	\$6 148				
Percent below poverty level	28.0	25.1	40.4	32.6	25.9	18.1	40.6	26.4				
2 earners	6 248	5 309	784	2 187	1 648	1 007	594	332				
Mean family income	\$8 315	\$8 587	\$6 994	\$7 583	\$8 310	\$8 566	\$7 454	\$8 243				
Percent below poverty level	9.7	7.9	17.0	14.4	14.6	9.3	23.7	15.4				
3 or more earners	1 636	1 282	284	775	488	278	204	147				
Mean family income	\$11 024	\$11 380	\$9 494	\$10 447	\$10 094	\$11 120	\$8 625	\$10 477				
Percent below poverty level	10.0	8.9	17.3	8.5	9.6	2.9	19.1	5.4				
SIZE OF FAMILY												
2 persons	6 730	5 696	940	1 228	1 364	922	408	161				
Mean family income	\$5 830	\$6 056	\$4 554	\$4 812	\$6 329	\$6 291	\$5 819	\$4 704				
Percent below poverty level	20.2	17.6	35.4	29.6	21.5	18.0	31.1	20.5				
3 persons	3 173	2 608	498	958	780	515	255	147				
Mean family income	\$6 935	\$7 226	\$5 448	\$6 333	\$7 023	\$7 691	\$5 594	\$7 632				
Percent below poverty level	20.8	18.8	31.5	20.8	15.1	9.5	27.1	17.7				
4 persons	2 391	2 020	311	1 130	667	435	232	144				
Mean family income	\$7 476	\$7 934	\$4 881	\$6 940	\$7 956	\$8 402	\$7 120	\$6 621				
Percent below poverty level	22.6	18.4	46.3	20.2	20.5	20.0	21.6	29.2				
5 and 6 persons	3 086	2 386	547	1 502	957	533	390	285				
Mean family income	\$6 900	\$7 075	\$6 350	\$6 383	\$6 978	\$8 065	\$5 327	\$7 625				
Percent below poverty level	36.2	32.9	47.2	35.2	30.5	19.7	44.4	24.6				
7 persons or more	1 748	1 403	280	1 047	776	405	371	254				
Mean family income	\$7 569	\$8 250	\$4 911	\$7 657	\$7 156	\$7 604	\$6 668	\$7 715				
Percent below poverty level	43.4	38.1	63.2	42.1	41.5	31.9	52.0	31.5				

Table A-6. Persons by Family Status and Age and Families by Income Deficit by Residence in Census Tracts With a Poverty Rate of 20 Percent or More: 1970

(Excludes inmates of institutions, members of Armed Forces living in barracks, college students living in dormitories, and unrelated individuals under 14 years. Data based on 15-percent sample, see text. For minimum base for derived figures (percent, median, etc.) and meaning of symbols, see text)

Phoenix	Neighborhood 01				Neighborhood 02				Persons of Spanish language	All races	White	Negro	Persons of Spanish language
	All races	White	Negro	Persons of Spanish language	All races	White	Negro	Persons of Spanish language					
ALL INCOME LEVELS													
All Persons													
Total	76 076	62 133	11 686	28 063	20 263	11 848	8 016	4 924					
In families	62 848	51 141	9 899	26 583	18 824	10 931	7 509	4 800					
Head	17 128	14 113	2 576	5 865	4 544	2 810	1 656	991					
With related children under 18	9 938	7 903	1 678	4 446	2 968	1 720	1 204	796					
Mean number of related children under 18	2.68	2.63	2.87	2.91	3.18	2.97	3.50	3.54					
With related children under 6	5 780	4 564	970	2 705	1 755	1 022	695	500					
14 to 24 years	2 224	1 883	286	901	386	202	170	106					
25 to 54 years	9 239	7 420	1 530	3 559	2 890	1 800	1 052	729					
55 to 64 years	2 942	2 510	385	888	693	413	262	66					
65 years and over	2 723	2 300	375	517	575	395	172	90					
Wife of head	12 733	11 044	1 346	4 316	3 696	2 384	1 232	794					
14 to 24 years	2 665	2 344	235	966	586	332	218	137					
25 to 54 years	6 439	5 503	700	2 559	2 207	1 447	725	552					
55 to 64 years	2 102	1 818	263	579	619	431	183	85					
65 years and over	1 527	1 379	148	212	284	174	106	20					
Other family members	32 987	25 984	5 977	16 402	10 584	5 737	4 621	3 015					
Under 3 years	5 012	4 007	801	2 483	1 377	791	512	417					
3 to 5 years	4 282	3 350	783	2 062	1 455	751	658	412					
6 to 13 years	11 889	9 100	2 446	5 837	4 226	2 170	1 983	1 255					
14 to 17 years	5 119	4 138	813	2 806	1 832	953	866	477					
18 to 21 years	2 574	2 032	488	1 440	829	510	319	242					
22 to 54 years	3 120	2 567	506	1 420	665	425	228	187					
55 to 64 years	246	202	27	110	81	52	21	20					
65 years and over	745	588	113	244	119	85	34	5					
Mean size of family	3.67	3.62	3.84	4.53	4.14	3.89	4.53	4.84					
Unrelated individuals	13 228	10 992	1 787	1 480	1 439	917	507	124					
14 to 24 years	1 643	1 420	103	197	116	75	41	6					
25 to 54 years	4 704	3 884	651	539	412	265	147	45					
55 to 64 years	2 423	1 920	467	275	366	256	99	41					
65 years and over	4 458	3 768	566	469	545	321	220	32					
Persons in Families With Female Head and Female Unrelated Individuals													
Total	20 504	15 025	5 043	6 873	3 653	1 460	2 189	471					
In families	14 570	10 047	4 216	6 191	2 942	989	1 953	429					
Head	3 731	2 611	1 034	1 299	708	280	428	98					
With related children under 18	2 800	1 847	867	1 095	546	167	379	63					
Mean number of related children under 18	2.82	2.72	3.03	3.12	3.74	3.37	3.90	...					
With related children under 6	1 364	821	498	566	279	71	208	29					
14 to 24 years	386	264	110	156	45	7	38	67					
25 to 54 years	2 302	1 541	693	850	500	174	326	67					
55 to 64 years	575	449	126	195	71	43	28	31					
65 years and over	468	357	105	98	92	56	36	...					
Other family members	10 839	7 436	3 182	4 892	2 234	709	1 525	331					
Under 3 years	1 131	727	378	545	195	46	149	10					
3 to 5 years	1 141	711	402	502	285	71	214	43					
6 to 13 years	4 028	2 541	1 406	1 731	952	309	643	162					
14 to 17 years	1 914	1 457	407	1 031	447	88	359	42					
18 to 21 years	1 007	707	277	489	160	67	93	28					
22 to 54 years	1 198	946	247	483	150	115	35	46					
55 to 64 years	98	93	5	47	21	7	14	...					
65 years and over	322	254	60	64	24	6	18	...					
Mean size of family	3.91	3.85	4.08	4.77	4.16	3.53	4.56	...					
Female unrelated individuals	5 934	4 978	827	682	711	471	236	42					
14 to 24 years	655	549	53	75	44	24	20	6					
25 to 54 years	1 601	1 357	223	157	169	109	60	14					
55 to 64 years	1 115	875	228	134	198	142	56	6					
65 years and over	2 563	2 197	323	316	300	196	100	16					

Table A-6. Persons by Family Status and Age and Families by Income Deficit by Residence in Census Tracts With a Poverty Rate of 20 Percent or More: 1970-Continued

[Excludes inmates of institutions, members of Armed Forces living in barracks, college students living in dormitories, and unrelated individuals under 14 years. Data based on 10 percent sample, see text. For minimum base for derived figures (percent, median, etc.) and meaning of symbols, see text.]

Phoenix	Neighborhood 01				Neighborhood 02				Persons of Spanish language
	All races	White	Negro	Persons of Spanish language	All races	White	Negro	Persons of Spanish language	
INCOME BELOW POVERTY LEVEL									
All Persons									
Total	24 710	18 183	5 441	9 530	6 103	2 753	3 213	1 338	
Percent below poverty level	32.5	29.3	46.6	34.0	30.1	23.2	40.1	27.2	
In families	18 743	13 476	4 484	8 662	5 420	2 343	2 955	1 302	
Head	4 435	3 181	1 049	1 759	1 162	536	612	251	
Percent below poverty level	25.9	22.5	41.5	30.0	25.6	19.1	37.0	25.3	
With related children under 18	3 273	2 288	819	1 430	900	370	516	218	
Mean number of related children under 18	3.22	3.17	3.31	3.52	3.90	3.80	3.99	3.95	
With related children under 6	1 886	1 266	495	829	580	262	304	161	
14 to 24 years	528	378	133	193	122	51	71	48	
25 to 54 years	2 520	1 761	633	1 025	710	311	385	168	
55 to 64 years	576	427	136	252	110	65	45	8	
65 years and over	811	615	167	289	220	109	111	27	
Wife of head	2 421	1 905	417	987	695	379	299	181	
14 to 24 years	454	359	76	187	93	61	32	63	
25 to 54 years	1 187	943	178	533	385	198	170	95	
55 to 64 years	416	314	88	156	87	55	32	19	
65 years and over	364	289	75	111	130	65	65	4	
Other family members	11 887	8 390	2 998	5 916	3 563	1 428	2 044	870	
Under 3 years	1 736	1 237	400	831	442	194	233	110	
3 to 5 years	1 634	1 084	451	723	569	235	310	129	
6 to 13 years	5 346	3 655	1 516	2 519	1 610	665	899	440	
14 to 17 years	1 822	1 437	309	1 138	671	196	469	130	
18 to 21 years	623	409	182	361	159	58	101	26	
22 to 54 years	529	408	111	257	57	42	15	28	
55 to 64 years	49	41	8	25	22	13	9	7	
65 years and over	148	119	21	62	33	25	8	...	
Mean size of family	4.23	4.24	4.19	4.92	4.66	4.37	4.83	5.19	
Unrelated individuals	5 967	4 707	957	868	683	410	258	36	
Percent below poverty level	45.1	42.8	53.6	58.6	47.5	44.7	50.9	...	
14 to 24 years	808	687	33	92	45	14	31	...	
25 to 54 years	1 285	1 014	191	224	128	85	43	6	
55 to 64 years	1 147	815	305	168	158	75	72	6	
65 years and over	2 727	2 191	428	384	352	236	112	24	
Persons in Families With Female Head and Female Unrelated Individuals									
Total	11 144	7 538	3 240	4 196	2 648	907	1 737	342	
Percent below poverty level	54.4	50.2	64.2	61.1	72.5	62.1	79.4	72.6	
In families	8 155	5 153	2 726	3 709	2 239	635	1 604	322	
Head	1 811	1 112	625	694	479	144	335	59	
Percent below poverty level	48.5	42.6	60.4	53.4	67.7	51.4	78.3	...	
With related children under 18	1 666	1 009	583	641	430	117	313	46	
Mean number of related children under 18	3.23	3.21	3.27	3.65	4.10	...	4.10	...	
With related children under 6	872	484	343	313	239	64	175	22	
14 to 24 years	192	101	79	52	45	7	38	...	
25 to 54 years	1 324	831	437	516	354	104	250	46	
55 to 64 years	143	93	50	62	31	20	11	...	
65 years and over	152	87	59	64	49	13	36	13	
Other family members	6 344	4 041	2 101	3 015	1 760	491	1 269	263	
Under 3 years	765	455	284	333	171	46	125	10	
3 to 5 years	802	470	304	311	237	65	172	37	
6 to 13 years	2 954	1 807	1 075	1 319	791	253	538	157	
14 to 17 years	1 024	785	199	656	408	66	342	35	
18 to 21 years	420	241	156	196	109	37	72	15	
22 to 54 years	275	203	67	161	29	18	11	9	
55 to 64 years	3	3	...	3	9	...	9	...	
65 years and over	101	77	16	36	6	...	6	...	
Mean size of family	4.50	4.63	4.36	5.34	4.67	4.41	4.79	...	
Female unrelated individuals	2 989	2 385	514	487	409	272	133	20	
Percent below poverty level	50.4	47.9	62.2	71.4	57.5	57.7	56.4	...	
14 to 24 years	341	306	14	32	34	14	20	...	
25 to 54 years	464	354	96	86	95	65	30	6	
55 to 64 years	601	435	154	102	105	60	45	6	
65 years and over	1 583	1 290	250	267	175	133	38	8	

Table A-6. Persons by Family Status and Age and Families by Income Deficit by Residence in Census Tracts With a Poverty Rate of 20 Percent or More: 1970—Continued

[Excludes inmates of institutions, members of Armed Forces living in barracks, college students living in dormitories, and unrelated individuals under 14 years. Data based on 15-percent sample, see text. For minimum base for derived figures (percent, median, etc.) and meaning of symbols, see text.]

Phoenix	Neighborhood O1				Neighborhood O2				All races	White	Negro	Persons of Spanish language
	All races	White	Negro	Persons of Spanish language	All races	White	Negro	Persons of Spanish language				
RATIO OF INCOME TO POVERTY LEVEL												
Families												
Percent with income:												
Less than .50 of poverty level	10.4	9.3	15.0	12.8	9.1	5.9	14.5	7.5				
.50 to .74	8.3	6.8	15.8	9.8	7.4	4.6	12.1	6.8				
.75 to .99	7.1	6.4	10.7	7.4	9.0	8.5	10.3	11.1				
1.00 to 1.24	8.7	8.6	8.4	12.1	9.9	9.8	10.7	17.6				
1.25 to 1.49	8.2	8.5	7.5	9.1	9.9	8.0	13.6	6.2				
1.50 to 1.99	15.1	14.9	16.0	17.8	13.0	14.2	11.2	15.9				
2.00 to 2.99	21.2	22.8	14.0	18.9	21.5	24.3	16.5	21.3				
3.00 or more	21.0	22.7	12.7	12.0	20.1	24.7	11.0	13.7				
Unrelated individuals												
Percent with income:												
Less than .50 of poverty level	19.4	18.4	21.4	30.3	26.7	21.5	33.9	...				
.50 to .74	14.2	13.5	17.5	19.5	9.7	10.5	8.5	...				
.75 to .99	11.6	11.0	14.7	6.9	11.1	12.8	8.5	...				
1.00 to 1.24	8.2	8.1	9.3	11.4	8.3	5.6	13.4	...				
1.25 to 1.49	6.6	6.5	7.0	4.1	10.2	10.6	9.9	...				
1.50 to 1.99	9.5	9.5	9.1	8.1	10.1	11.7	7.7	...				
2.00 to 2.99	13.8	14.6	11.7	10.2	11.0	12.5	8.7	...				
3.00 or more	16.8	18.5	9.3	7.6	12.9	14.9	9.5	...				
DIFFERENCE BETWEEN FAMILY INCOME AND POVERTY LEVEL												
Families below poverty level												
\$1 to \$249	4 435	3 181	1 069	1 759	1 162	536	612	251				
\$250 to \$499	337	265	72	91	101	43	58	30				
\$500 to \$999	362	255	97	119	148	123	25	61				
\$1,000 to \$1,999	869	611	229	325	205	96	109	7				
\$2,000 and over	1 229	849	316	472	224	76	142	54				
Median income deficit	1 638	1 201	355	752	484	198	278	99				
Mean income deficit	\$1 528	\$1 541	\$1 432	\$1 730	\$1 567	\$1 079	\$1 803	\$1 509				
	\$1 711	\$1 698	\$1 678	\$1 908	\$1 754	\$1 574	\$1 876	\$1 616				
Families above poverty level												
\$0 to \$249	12 693	10 932	1 507	4 106	3 382	2 274	1 044	740				
\$250 to \$499	443	346	87	195	122	94	28	58				
\$500 to \$999	410	373	30	197	89	44	45	18				
\$1,000 to \$1,999	849	683	139	314	233	116	117	51				
\$2,000 and over	1 794	1 458	301	620	504	319	185	135				
Median income surplus	9 197	8 072	950	2 780	2 434	1 701	669	478				
Mean income surplus	\$2000+	\$2000+	\$2000+	\$2000+	\$2000+	\$2000+	\$2000+	\$2000+				
	\$4 882	\$5 014	\$4 039	\$4 227	\$4 877	\$4 982	\$4 337	\$4 238				

Table A-7. Selected Housing Characteristics of Housing Units by Location in Census Tracts With a Poverty Rate of 20 Percent or More: 1970

(Excludes inmates of institutions, members of Armed Forces living in barracks, college students living in dormitories, and unrelated individuals under 14 years. Data based on 15-percent sample, see text. For minimum base for derived figures (percent, median, etc.) and meaning of symbols, see text)

Phoenix	Neighborhood 01				Neighborhood 02							Persons of Spanish language
	All races	White	Negro	Persons of Spanish language	All races	White	Negro	Persons of Spanish language	All races	White	Negro	
TENURE AND VACANCY STATUS												
Total, all units	29 316	22 481	3 908	6 884	6 175	3 519	2 070	1 023				
Occupied	27 073	22 481	3 908	6 884	5 678	3 519	2 070	1 023				
Population in units	73 947	60 630	10 984	27 147	20 262	11 866	8 119	4 912				
Population per unit	2.73	2.70	2.81	3.94	3.57	3.37	3.92	4.80				
Owner occupied	9 442	7 971	1 295	2 880	3 578	2 131	1 387	688				
Population per unit	2.99	3.01	2.79	4.22	3.71	3.45	4.12	5.08				
1-person households	2 213	1 801	370	281	558	360	192	30				
65 years and over	1 379	1 138	205	170	298	196	96	18				
Renter occupied	17 631	14 510	2 613	4 004	2 100	1 388	683	335				
Population per unit	2.59	2.53	2.82	3.74	3.33	3.25	3.53	4.23				
1-person households	6 778	5 674	974	665	513	349	164	58				
65 years and over	2 504	2 171	296	266	159	100	59	9				
Available vacant year-round	1 659	-	-	-	382	-	-	-				
For rent	1 592	-	-	-	287	-	-	-				
For sale only	67	-	-	-	95	-	-	-				
Other vacant	584	-	-	-	115	-	-	-				
YEAR STRUCTURE BUILT												
Owner occupied	9 442	7 971	1 295	2 880	3 578	2 131	1 387	688				
1960 to March 1970	1 039	953	73	240	946	540	394	183				
1950 to 1959	1 892	1 479	370	637	1 433	808	596	341				
1940 to 1949	2 696	2 157	486	972	789	467	310	123				
1939 or earlier	3 815	3 382	366	1 031	410	316	87	41				
Renter occupied	17 631	14 510	2 613	4 004	2 100	1 388	683	335				
1960 to March 1970	2 509	2 083	372	349	414	205	209	52				
1950 to 1959	3 571	2 911	533	916	777	468	294	143				
1940 to 1949	3 908	3 050	730	1 019	628	472	142	74				
1939 or earlier	7 643	6 466	978	1 720	281	243	38	66				
Owner occ. below poverty level	2 249	1 693	495	633	993	504	470	158				
1960 to March 1970	163	123	32	26	227	106	121	46				
1950 to 1959	396	275	115	116	376	166	197	60				
1940 to 1949	713	492	206	227	249	132	111	47				
1939 or earlier	977	803	142	264	141	100	41	5				
Renter occ. below poverty level	6 655	5 054	1 296	1 762	697	373	318	105				
1960 to March 1970	707	503	171	145	95	25	70	9				
1950 to 1959	1 208	887	237	377	283	125	158	52				
1940 to 1949	1 582	1 133	380	512	193	110	77	17				
1939 or earlier	3 158	2 531	508	728	126	113	13	27				
UNITS IN STRUCTURE												
All occupied units	27 073	22 481	3 908	6 884	5 678	3 519	2 070	1 023				
1	16 153	13 194	2 529	5 375	4 402	2 459	1 863	939				
2 to 4	4 515	3 618	780	932	246	166	80	26				
5 to 9	1 539	1 235	240	192	80	41	39	8				
10 to 49	3 030	2 685	284	257	215	187	28	22				
50 or more	846	786	54	77	37	-	37	-				
Mobile home or trailer	990	963	21	51	698	666	23	28				
YEAR HEAD MOVED INTO UNIT												
All occupied units	27 073	22 481	3 908	6 884	5 678	3 519	2 070	1 023				
1968 to March 1970	12 941	10 987	1 602	2 798	2 327	1 468	618	395				
1965 to 1967	4 470	3 553	785	1 381	923	549	374	157				
1960 to 1964	3 207	2 595	524	896	727	440	287	155				
1959 or earlier	6 455	5 346	997	1 809	1 701	1 062	591	316				
Occ. units below poverty level	8 904	6 747	1 791	2 395	1 690	877	788	263				
1968 to March 1970	4 240	3 335	695	1 109	650	354	284	99				
1965 to 1967	1 499	1 018	400	424	346	183	163	76				
1960 to 1964	1 158	852	270	316	129	44	85	29				
1959 or earlier	2 007	1 542	426	546	565	296	256	59				
SELECTED EQUIPMENT												
All occupied units	27 073	22 481	3 908	6 884	5 678	3 519	2 070	1 023				
Percent with air conditioning	61.8	61.5	64.1	52.3	48.0	46.5	50.3	41.5				
Percent with automobile	68.8	71.4	55.9	72.2	83.2	82.7	84.0	86.3				
Percent with telephone	59.1	59.8	57.7	56.2	60.6	59.1	62.5	60.5				
Percent with all plumbing facilities	93.3	93.6	91.5	94.2	94.7	95.0	94.9	92.9				
Occ. units below poverty level	8 904	6 747	1 791	2 395	1 690	877	788	263				
Percent with air conditioning	60.1	59.3	62.5	53.1	42.8	39.1	47.6	30.4				
Percent with automobile	46.2	49.0	38.1	49.9	66.2	60.1	72.6	73.8				
Percent with telephone	46.5	46.8	48.1	41.7	46.2	40.9	51.8	36.1				
Percent with all plumbing facilities	88.6	88.9	86.7	90.4	90.1	88.8	92.6	85.2				
PERSONS PER ROOM												
Owner occupied	9 442	7 971	1 295	2 880	3 578	2 131	1 387	688				
1.00 or fewer persons per room	8 011	6 768	1 123	1 948	2 677	1 680	944	381				
1.01 to 1.50 persons per room	1 014	836	129	643	586	263	316	168				
1.51 or more persons per room	417	367	43	289	315	188	127	139				
Owner occ. below poverty level	2 249	1 693	495	633	993	504	470	158				
1.00 or fewer persons per room	1 930	1 457	433	451	685	392	281	78				
1.01 to 1.50 persons per room	197	144	39	83	206	55	144	37				
1.51 or more persons per room	122	92	23	99	102	57	45	43				

Table A-7. Selected Housing Characteristics of Housing Units by Location in Census Tracts With a Poverty Rate of 20 Percent or More: 1970—Continued

[Excludes inmates of institutions, members of Armed Forces living in barracks, college students living in dormitories, and unrelated individuals under 14 years. Data based on 15-percent sample, see text. For minimum base for derived figures (percent, median, etc.) and meaning of symbols, see text]

Phoenix	Neighborhood 01				Neighborhood 02				All races	White	Negro	Persons of Spanish language
	All races	White	Negro	Persons of Spanish language	All races	White	Negro	Persons of Spanish language				
PERSONS PER ROOM—Con.												
Renter occupied.....	17 631	14 510	2 613	4 004	2 100	1 388	683	335				
100 or fewer persons per room.....	14 676	12 168	2 190	2 625	1 468	974	479	162				
1.01 to 1.50 persons per room.....	1 714	1 365	258	802	342	204	138	69				
1.51 or more persons per room.....	1 241	977	165	577	290	210	66	104				
Renter occ. below poverty level.....	6 655	5 054	1 296	1 762	697	373	318	105				
100 or fewer persons per room.....	5 282	4 045	1 049	1 122	418	214	204	33				
1.01 to 1.50 persons per room.....	795	593	146	369	124	49	75	6				
1.51 or more persons per room.....	578	416	101	271	155	110	39	66				
VALUE OF PROPERTY												
Specified owner occupied ¹	7 590	6 289	1 146	2 653	2 805	1 436	1 318	615				
Less than \$5,000.....	820	644	168	355	343	118	219	31				
\$5,000 to \$9,999.....	3 717	3 074	547	1 557	1 498	815	677	318				
\$10,000 to \$12,499.....	1 382	1 125	230	448	606	310	271	200				
\$12,500 to \$14,999.....	558	481	71	87	155	61	80	34				
\$15,000 to \$17,499.....	482	436	46	85	108	90	18	18				
\$17,500 to \$19,999.....	243	222	16	66	16	9	7	9				
\$20,000 to \$24,999.....	258	203	42	41	44	20	24	—				
\$25,000 to \$34,999.....	57	45	12	14	27	5	22	5				
\$35,000 or more.....	73	59	14	—	8	—	—	—				
Median value of property.....	\$9 000	\$9 100	\$8 700	\$8 100	\$8 500	\$8 700	\$8 200	\$9 300				
Mean value of property.....	\$10 100	\$10 200	\$9 700	\$8 600	\$9 100	\$9 300	\$8 800	\$9 600				
Specified owner occupied below poverty level ¹	1 804	1 327	428	582	840	363	458	149				
Less than \$5,000.....	340	228	104	169	187	65	116	20				
\$5,000 to \$9,999.....	1 036	777	225	312	476	232	238	98				
\$10,000 to \$12,499.....	232	189	43	73	119	33	79	17				
\$12,500 to \$14,999.....	53	42	11	—	16	5	11	5				
\$15,000 to \$17,499.....	65	46	19	7	28	28	—	9				
\$17,500 to \$19,999.....	19	13	6	7	7	—	7	—				
\$20,000 to \$24,999.....	27	6	14	7	—	—	—	—				
\$25,000 or more.....	32	26	6	7	—	—	—	—				
Median value of property.....	\$7 700	\$7 800	\$7 400	\$7 000	\$7 400	\$7 500	\$7 400	\$7 800				
Mean value of property.....	\$8 500	\$8 500	\$8 300	\$7 300	\$7 800	\$7 800	\$7 700	\$8 600				
GROSS RENT												
Specified renter occupied ²	17 452	14 377	2 573	3 939	2 066	1 363	674	329				
Less than \$40.....	1 613	1 136	441	437	65	45	20	15				
\$40 to \$59.....	3 237	2 438	661	880	383	199	178	39				
\$60 to \$79.....	4 134	3 245	786	1 115	485	330	139	92				
\$80 to \$99.....	3 549	3 045	375	879	492	278	214	99				
\$100 to \$119.....	2 082	1 900	140	329	246	182	64	34				
\$120 to \$149.....	1 527	1 408	89	141	157	127	30	8				
\$150 to \$199.....	566	550	8	11	24	24	—	—				
\$200 to \$249.....	82	82	—	—	—	—	—	—				
\$250 or more.....	74	68	6	—	18	18	—	—				
No cash rent.....	588	505	67	147	196	160	29	42				
Median gross rent.....	\$77	\$81	\$64	\$70	\$80	\$82	\$78	\$79				
Mean gross rent.....	\$81	\$84	\$66	\$71	\$82	\$86	\$76	\$76				
Specified renter occupied below poverty level ²	6 560	4 992	1 269	1 719	685	361	318	99				
Less than \$40.....	1 163	787	347	342	31	25	6	—				
\$40 to \$59.....	1 751	1 260	404	522	172	63	103	9				
\$60 to \$79.....	1 678	1 295	328	447	103	66	37	32				
\$80 to \$99.....	915	701	120	239	160	66	94	21				
\$100 to \$119.....	449	410	26	107	81	40	41	8				
\$120 to \$149.....	290	252	17	24	44	14	30	—				
\$150 to \$199.....	85	85	—	5	7	—	—	—				
\$200 to \$249.....	6	6	—	—	—	—	—	—				
\$250 or more.....	8	8	—	—	18	18	—	—				
Median gross rent.....	\$63	\$65	\$54	\$59	\$80	\$79	\$82	...				
Mean gross rent.....	\$66	\$69	\$56	\$62	\$85	\$91	\$79	...				
GROSS RENT AS PERCENTAGE OF INCOME BY POVERTY STATUS IN 1969												
Specified renter occupied ³	16 265	13 440	2 373	3 638	1 838	1 189	627	287				
Less than 20 percent.....	6 330	5 359	856	1 711	949	681	252	192				
20 to 24 percent.....	1 953	1 580	325	362	239	171	62	36				
25 to 34 percent.....	2 673	2 119	445	567	215	130	85	28				
35 to 49 percent.....	2 224	1 839	325	416	172	86	86	22				
50 percent or more.....	3 085	2 543	422	582	263	121	142	9				
Specified renter occupied below poverty level ³	5 746	4 372	1 109	1 532	584	285	293	70				
Less than 20 percent.....	375	241	122	202	26	26	—	11				
20 to 24 percent.....	375	225	126	137	62	24	32	—				
25 to 34 percent.....	984	708	227	315	116	67	49	28				
35 to 49 percent.....	1 270	982	228	317	133	63	70	22				
50 percent or more.....	2 742	2 216	406	561	247	105	142	9				

¹Limited to one-family homes on less than 10 acres and no business on property. Cooperatives, condominiums, mobile homes, and trailers are excluded. ²Excludes one-family homes on 10 acres or more. Specified renter occupied units below poverty level include "no cash rent" units not shown separately. ³Excludes one-family homes on 10 acres or more, all "no cash rent" units, and units for which the income of the family or primary individual was reported as "none" or "loss."