

POVERTY LEVELS, RATES AND RANKS
PLACES OF AT LEAST 100,000
1990 CENSUS

15:35 Wednesday, June 24, 1992 1

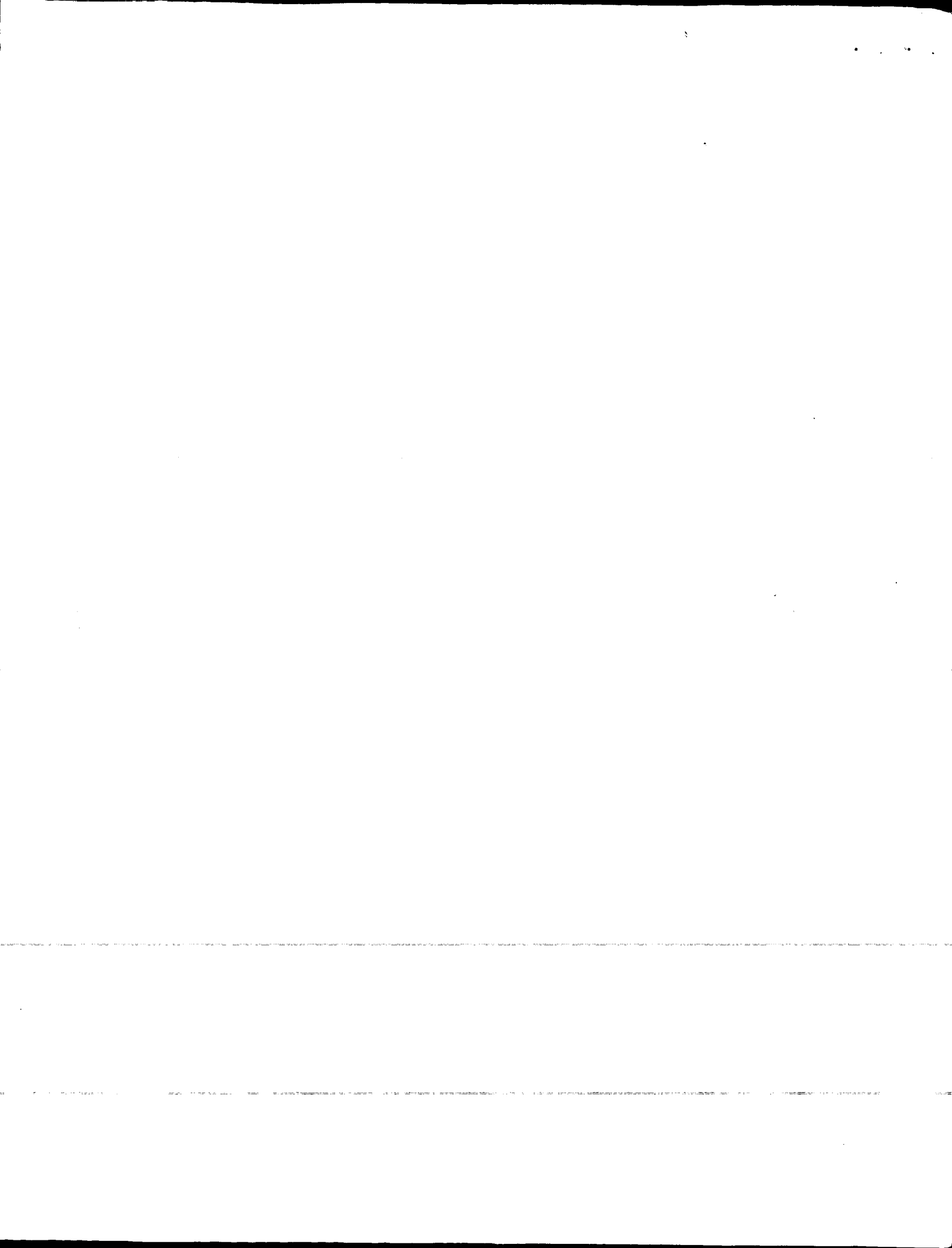
STATE	NAMEPLC	PERPU	PERPOV	PERRATE	PERRANK
AK	Anchorage city	220789	15614	7.1	173.0
AL	Birmingham city	260150	64572	24.8	16.0
AL	Huntsville city	155507	18093	11.6	133.5
AL	Mobile city	190956	42838	22.4	32.0
AL	Montgomery city	181311	32778	18.1	67.5
AR	Little Rock city	172301	25193	14.6	102.5
AZ	Glendale city	146230	16756	11.5	136.5
AZ	Mesa city	285066	27087	9.5	155.5
AZ	Phoenix city	969133	137406	14.2	107.0
AZ	Scottsdale city	128753	7583	5.9	179.5
AZ	Tempe city	136693	18603	13.6	113.0
AZ	Tucson city	393379	79287	20.2	46.0
CA	Anaheim city	262477	27933	10.6	146.0
CA	Bakersfield city	171835	25782	15.0	98.5
CA	Chula Vista city	133083	13036	9.8	152.5
CA	Citrus Heights CDP	106236	7735	7.3	171.0
CA	Concord city	109787	7349	6.7	175.0
CA	East Los Angeles CDP	121549	29355	24.2	20.0
CA	El Monte city	104172	23446	22.5	31.0
CA	Escondido city	107232	12016	11.2	140.0
CA	Fremont city	171956	7316	4.3	185.0
CA	Fresno city	345742	83108	24.0	21.0
CA	Fullerton city	112000	10985	9.8	152.5
CA	Garden Grove city	140583	14652	10.4	148.0
CA	Glendale city	177326	25484	14.4	105.5
CA	Hayward city	109993	10640	9.7	154.0
CA	Huntington Beach city	180330	9367	5.2	182.0
CA	Inglewood city	108098	17806	16.5	87.0
CA	Irvine city	107923	6948	6.4	177.0
CA	Long Beach city	414425	69694	16.8	84.0
CA	Los Angeles city	3413703	643809	18.9	57.0
CA	Modesto city	161188	20930	13.0	118.5
CA	Moreno Valley city	118059	9870	8.4	162.5
CA	Oakland city	365427	68781	18.8	59.0
CA	Oceanside city	127333	12823	10.1	150.0
CA	Ontario city	131683	17853	13.6	113.0
CA	Orange city	107155	8559	8.0	166.0
CA	Oxnard city	140627	17608	12.5	126.0
CA	Pasadena city	127660	19043	14.9	100.5
CA	Pomona city	128340	23648	18.4	64.0
CA	Rancho Cucamonga city	100795	5516	5.5	181.0
CA	Riverside city	220040	26280	11.9	131.0
CA	Sacramento city	361621	62232	17.2	76.5
CA	Salinas city	106881	16652	15.6	94.0
CA	San Bernardino city	158711	36174	22.8	25.0
CA	San Diego city	1064054	142382	13.4	116.0
CA	San Francisco city	710982	90019	12.7	122.0
CA	San Jose city	770150	71676	9.3	158.0
CA	Santa Ana city	285618	51835	18.1	67.5

PERPU=PERSONS FOR WHOM POVERTY STATUS IS DETERMINED

PERPOV=PERSONS IN POVERTY

PERRATE=POVERTY RATE

PERRANK=POVERTY RANK (1 IS THE POOREST)



POVERTY LEVELS, RATES AND RANKS
PLACES OF AT LEAST 100,000
1990 CENSUS

15:35 Wednesday, June 24, 1992 2

STATE	NAMEPLC	PERPU	PERPOV	PERRATE	PERRANK
CA	Santa Clarita city	108980	4045	3.7	187.0
CA	Santa Rosa city	111612	9269	8.3	164.0
CA	Stockton city	205884	43990	21.4	37.5
CA	Sunnyvale city	116342	5461	4.7	184.0
CA	Thousand Oaks city	102731	4340	4.2	186.0
CA	Torrance city	131867	6791	5.1	183.0
CA	Vallejo city	106178	9007	8.5	161.0
CO	Aurora city	219234	16288	7.4	170.0
CO	Colorado Springs city	275562	29973	10.9	143.0
CO	Denver city	458243	78515	17.1	79.0
CO	Lakewood city	123078	9348	7.6	169.0
CT	Bridgeport city	137446	23463	17.1	79.0
CT	Hartford city	132294	36397	27.5	8.0
CT	New Haven city	119665	25481	21.3	39.0
CT	Stamford city	107007	6728	6.3	178.0
CT	Waterbury city	106915	12922	12.1	130.0
DC	Washington city	570826	96278	16.9	82.0
FL	Fort Lauderdale city	144937	24793	17.1	79.0
FL	Hialeah city	185853	33830	18.2	65.5
FL	Hollywood city	120431	13264	11.0	141.5
FL	Jacksonville city (remainder)	616835	80016	13.0	118.5
FL	Miami city	351656	109594	31.2	4.0
FL	Orlando city	151040	23797	15.8	93.0
FL	St. Petersburg city	232257	31475	13.6	113.0
FL	Tallahassee city	114337	25518	22.3	33.0
FL	Tampa city	270374	52557	19.4	50.5
GA	Atlanta city	375119	102364	27.3	9.0
GA	Columbus city (remainder)	170905	31811	18.6	61.0
GA	Macon city	103272	25178	24.4	18.0
GA	Savannah city	132050	29854	22.6	29.0
HI	Honolulu CDP	355702	29873	8.4	162.5
IA	Cedar Rapids city	105957	10567	10.0	151.0
IA	Des Moines city	187264	24137	12.9	120.5
ID	Boise City city	123174	11598	9.4	157.0
IL	Chicago city	2739439	592298	21.6	36.0
IL	Peoria city	108733	20516	18.9	57.0
IL	Rockford city	135759	18127	13.4	116.0
IL	Springfield city	103412	13065	12.6	123.5
IN	Evansville city	121892	17812	14.6	102.5
IN	Fort Wayne city	169404	19531	11.5	136.5
IN	Gary city	115400	33964	29.4	6.0
IN	Indianapolis city (remainder)	715884	89831	12.5	126.0
IN	South Bend city	103395	14854	14.4	105.5
KS	Kansas City city	147873	26433	17.9	70.5
KS	Overland Park city	111020	3142	2.8	190.0
KS	Topeka city	116427	14292	12.3	129.0
KS	Wichita city	299234	37321	12.5	126.0
KY	Lexington-Fayette	213016	30108	14.1	108.5
KY	Louisville city	261622	59144	22.6	29.0

PERPU=PERSONS FOR WHOM POVERTY STATUS IS DETERMINED
PERPOV=PERSONS IN POVERTY
PERRATE=POVERTY RATE
PERRANK=POVERTY RANK (1 IS THE POOREST)

POVERTY LEVELS, RATES AND RANKS
PLACES OF AT LEAST 100,000
1990 CENSUS

15:35 Wednesday, June 24, 1992 3

STATE	NAMEPLC	PERPU	PERPOV	PERRATE	PERRANK
LA	Baton Rouge city	208929	54669	26.2	12.0
LA	Metairie CDP	148930	13424	9.0	159.5
LA	New Orleans city	480749	152042	31.6	3.0
LA	Shreveport city	194865	49215	25.3	14.5
MA	Boston city	545764	102092	18.7	60.0
MA	Springfield city	150395	30241	20.1	47.0
MA	Worcester city	158306	24228	15.3	95.5
MD	Baltimore city	714672	156284	21.9	35.0
MI	Detroit city	1013480	328467	32.4	2.0
MI	Flint city	138058	42218	30.6	5.0
MI	Grand Rapids city	180542	29103	16.1	90.0
MI	Lansing city	126164	24513	19.4	50.5
MI	Sterling Heights city	116937	4153	3.6	188.0
MI	Warren city	143129	9303	6.5	176.0
MN	Minneapolis city	353874	65556	18.5	62.5
MN	St. Paul city	263822	44115	16.7	86.0
MO	Independence city	110945	10557	9.5	155.5
MO	Kansas City city	426630	65381	15.3	95.5
MO	Springfield city	130634	23223	17.8	72.0
MO	St. Louis city	386630	95271	24.6	17.0
MS	Jackson city	190561	43216	22.7	26.5
NC	Charlotte city	390602	42312	10.8	144.5
NC	Durham city	128581	19163	14.9	100.5
NC	Greensboro city	174597	20214	11.6	133.5
NC	Raleigh city	194380	22942	11.8	132.0
NC	Winston-Salem city	136197	20713	15.2	97.0
NE	Lincoln city	181990	20521	11.3	139.0
NE	Omaha city	327507	41357	12.6	123.5
NJ	Elizabeth city	108230	17451	16.1	90.0
NJ	Jersey City city	225323	42539	18.9	57.0
NJ	Newark city	268455	70702	26.3	11.0
NJ	Paterson city	138494	25677	18.5	62.5
NM	Albuquerque city	378521	52903	14.0	110.5
NV	Las Vegas city	253617	29084	11.5	136.5
NV	Paradise CDP	123461	12558	10.2	149.0
NV	Reno city	130984	15085	11.5	136.5
NY	Buffalo city	318475	81601	25.6	13.0
NY	New York city	7181155	1384994	19.3	53.0
NY	Rochester city	222265	52237	23.5	22.0
NY	Syracuse city	151518	34402	22.7	26.5
NY	Yonkers city	185342	20436	11.0	141.5
OH	Akron city	217484	44544	20.5	44.0
OH	Cincinnati city	350575	85319	24.3	19.0
OH	Cleveland city	496089	142217	28.7	7.0
OH	Columbus city	611747	105494	17.2	76.5
OH	Dayton city	175189	46480	26.5	10.0
OH	Toledo city	327074	62426	19.1	55.0
OK	Oklahoma City city	435781	69096	15.9	92.0
OK	Tulsa city	358604	53768	15.0	98.5

PERPU=PERSONS FOR WHOM POVERTY STATUS IS DETERMINED

PERPOV=PERSONS IN POVERTY

PERRATE=POVERTY RATE

PERRANK=POVERTY RANK (1 IS THE POOREST)

POVERTY LEVELS, RATES AND RANKS
PLACES OF AT LEAST 100,000
1990 CENSUS

15:35 Wednesday, June 24, 1992 4

STATE	NAMEPLC	PERPU	PERPOV	PERRATE	PERRANK
OR	Eugene city	106651	18176	17.0	81.0
OR	Portland city	427011	62058	14.5	104.0
PA	Allentown city	101050	12999	12.9	120.5
PA	Erie city	104619	20192	19.3	53.0
PA	Philadelphia city	1545795	313374	20.3	45.0
PA	Pittsburgh city	350940	75172	21.4	37.5
RI	Providence city	148585	34120	23.0	23.5
TN	Chattanooga city	147451	26803	18.2	65.5
TN	Knoxville city	154736	32189	20.8	42.0
TN	Memphis city	592784	136123	23.0	23.5
TN	Nashville-Davidson (remainder)	467232	62497	13.4	116.0
TX	Amarillo city	155372	26058	16.8	84.0
TX	Arlington city	259051	21272	8.2	165.0
TX	Austin city	448169	80369	17.9	70.5
TX	Beaumont city	111103	23494	21.1	40.0
TX	Corpus Christi city	252670	50525	20.0	48.0
TX	Dallas city	989404	177790	18.0	69.0
TX	El Paso city	508956	128886	25.3	14.5
TX	Fort Worth city	433915	75597	17.4	74.0
TX	Garland city	179648	14062	7.8	167.0
TX	Houston city	1605725	332974	20.7	43.0
TX	Irving city	153669	16209	10.5	147.0
TX	Laredo city	121010	45126	37.3	1.0
TX	Lubbock city	176865	34593	19.6	49.0
TX	Mesquite city	100494	7771	7.7	168.0
TX	Pasadena city	118195	16724	14.1	108.5
TX	Plano city	128084	4279	3.3	189.0
TX	San Antonio city	914980	207161	22.6	29.0
UT	Salt Lake City city	156368	25651	16.4	88.0
VA	Alexandria city	109082	7732	7.1	173.0
VA	Arlington CDP	166642	11895	7.1	173.0
VA	Chesapeake city	148669	13329	9.0	159.5
VA	Hampton city	127791	13831	10.8	144.5
VA	Newport News city	164984	23169	14.0	110.5
VA	Norfolk city	227455	43944	19.3	53.0
VA	Portsmouth city	101007	17920	17.7	73.0
VA	Richmond city	191992	40103	20.9	41.0
VA	Virginia Beach city	380369	22307	5.9	179.5
WA	Seattle city	498333	61681	12.4	128.0
WA	Spokane city	172209	29863	17.3	75.0
WA	Tacoma city	170496	28632	16.8	84.0
WI	Madison city	178394	28640	16.1	90.0
WI	Milwaukee city	610060	135583	22.2	34.0

PERPU=PERSONS FOR WHOM POVERTY STATUS IS DETERMINED
PERPOV=PERSONS IN POVERTY
PERRATE=POVERTY RATE
PERRANK=POVERTY RANK (1 IS THE POOREST)

POVERTY LEVELS, RATES AND RANKS
PLACES OF AT LEAST 100,000
1990 CENSUS

15:47 Wednesday, June 24, 1992 1

STATE	NAMEPLC	PERPU	PERPOV	PERRATE	PERRANK
TX	Laredo city	121010	45126	37.3	1.0
MI	Detroit city	1013480	328467	32.4	2.0
LA	New Orleans city	480749	152042	31.6	3.0
FL	Miami city	351656	109594	31.2	4.0
MI	Flint city	138058	42218	30.6	5.0
IN	Gary city	115400	33964	29.4	6.0
OH	Cleveland city	496089	142217	28.7	7.0
CT	Hartford city	132294	36397	27.5	8.0
GA	Atlanta city	375119	102364	27.3	9.0
OH	Dayton city	175189	46480	26.5	10.0
NJ	Newark city	268455	70702	26.3	11.0
LA	Baton Rouge city	208929	54669	26.2	12.0
NY	Buffalo city	318475	81601	25.6	13.0
LA	Shreveport city	194865	49215	25.3	14.5
TX	El Paso city	508956	128886	25.3	14.5
AL	Birmingham city	260150	64572	24.8	16.0
MO	St. Louis city	386630	95271	24.6	17.0
GA	Macon city	103272	25178	24.4	18.0
OH	Cincinnati city	350575	85319	24.3	19.0
CA	East Los Angeles CDP	121549	29355	24.2	20.0
CA	Fresno city	345742	83108	24.0	21.0
NY	Rochester city	222265	52237	23.5	22.0
RI	Providence city	148585	34120	23.0	23.5
TN	Memphis city	592784	136123	23.0	23.5
CA	San Bernardino city	158711	36174	22.8	25.0
MS	Jackson city	190561	43216	22.7	26.5
NY	Syracuse city	151518	34402	22.7	26.5
GA	Savannah city	132050	29854	22.6	29.0
KY	Louisville city	261622	59144	22.6	29.0
TX	San Antonio city	914980	207161	22.6	29.0
CA	El Monte city	104172	23446	22.5	31.0
AL	Mobile city	190956	42838	22.4	32.0
FL	Tallahassee city	114337	25518	22.3	33.0
WI	Milwaukee city	610060	135583	22.2	34.0
MD	Baltimore city	714672	156284	21.9	35.0
IL	Chicago city	2739439	592298	21.6	36.0
CA	Stockton city	205884	43990	21.4	37.5
PA	Pittsburgh city	350940	75172	21.4	37.5
CT	New Haven city	119665	25481	21.3	39.0
TX	Beaumont city	111103	23494	21.1	40.0
VA	Richmond city	191992	40103	20.9	41.0
TN	Knoxville city	154736	32189	20.8	42.0
TX	Houston city	1605725	332974	20.7	43.0
OH	Akron city	217484	44544	20.5	44.0
PA	Philadelphia city	1545795	313374	20.3	45.0
AZ	Tucson city	393379	79287	20.2	46.0
MA	Springfield city	150395	30241	20.1	47.0
TX	Corpus Christi city	252670	50525	20.0	48.0
TX	Lubbock city	176865	34593	19.6	49.0

PERPU=PERSONS FOR WHOM POVERTY STATUS IS DETERMINED

PERPOV=PERSONS IN POVERTY

PERRATE=POVERTY RATE

PERRANK=POVERTY RANK (1 IS THE POOREST)

PLACES OF AT LEAST 100,000
1990 CENSUS

STATE	NAMEPLC	PERPU	PERPOV	PERRATE	PERRANK
FL	Tampa city	270374	52557	19.4	50.5
MI	Lansing city	126164	24513	19.4	50.5
NY	New York city	7181155	1384994	19.3	53.0
PA	Erie city	104619	20192	19.3	53.0
VA	Norfolk city	227455	43944	19.3	53.0
OH	Toledo city	327074	62426	19.1	55.0
CA	Los Angeles city	3413703	643809	18.9	57.0
IL	Peoria city	108733	20516	18.9	57.0
NJ	Jersey City city	225323	42539	18.9	57.0
CA	Oakland city	365427	68781	18.8	59.0
MA	Boston city	545764	102092	18.7	60.0
GA	Columbus city (remainder)	170905	31811	18.6	61.0
MN	Minneapolis city	353874	65556	18.5	62.5
NJ	Paterson city	138494	25677	18.5	62.5
CA	Pomona city	128340	23648	18.4	64.0
FL	Mialeah city	185853	33830	18.2	65.5
TN	Chattanooga city	147451	26803	18.2	65.5
AL	Montgomery city	181311	32778	18.1	67.5
CA	Santa Ana city	285618	51835	18.1	67.5
TX	Dallas city	989404	177790	18.0	69.0
KS	Kansas City city	147873	26433	17.9	70.5
TX	Austin city	448169	80369	17.9	70.5
MO	Springfield city	130634	23223	17.8	72.0
VA	Portsmouth city	101007	17920	17.7	73.0
TX	Fort Worth city	433915	75597	17.4	74.0
WA	Spokane city	172209	29863	17.3	75.0
CA	Sacramento city	361621	62232	17.2	76.5
OH	Columbus city	611747	105494	17.2	76.5
CO	Denver city	458243	78515	17.1	79.0
CT	Bridgeport city	137446	23463	17.1	79.0
FL	Fort Lauderdale city	144937	24793	17.1	79.0
OR	Eugene city	106651	18176	17.0	81.0
DC	Washington city	570826	96278	16.9	82.0
CA	Long Beach city	414425	69694	16.8	84.0
TX	Amarillo city	155372	26058	16.8	84.0
WA	Tacoma city	170496	28632	16.8	84.0
MN	St. Paul city	263822	44115	16.7	86.0
CA	Inglewood city	108098	17806	16.5	87.0
UT	Salt Lake City city	156368	25651	16.4	88.0
MI	Grand Rapids city	180542	29103	16.1	90.0
NJ	Elizabeth city	108230	17451	16.1	90.0
WI	Madison city	178394	28640	16.1	90.0
OK	Oklahoma City city	435781	69096	15.9	92.0
FL	Orlando city	151040	23797	15.8	93.0
CA	Salinas city	106881	16652	15.6	94.0
MA	Worcester city	158306	24228	15.3	95.5
MO	Kansas City city	426630	65381	15.3	95.5
NC	Winston-Salem city	136197	20713	15.2	97.0
CA	Bakersfield city	171835	25782	15.0	98.5

PERPU=PERSONS FOR WHOM POVERTY STATUS IS DETERMINED

PERPOV=PERSONS IN POVERTY

PERRATE=POVERTY RATE

PERRANK=POVERTY RANK (1 IS THE POOREST)

PLACES OF AT LEAST 100,000
1990 CENSUS

STATE	NAMEPLC	PERPU	PERPOV	PERRATE	PERRANK
OK	Tulsa city	358604	53768	15.0	98.5
CA	Pasadena city	127660	19043	14.9	100.5
NC	Durham city	128581	19163	14.9	100.5
AR	Little Rock city	172301	25193	14.6	102.5
IN	Evansville city	121892	17812	14.6	102.5
OR	Portland city	427011	62058	14.5	104.0
CA	Glendale city	177326	25484	14.4	105.5
IN	South Bend city	103395	14854	14.4	105.5
AZ	Phoenix city	969133	137406	14.2	107.0
KY	Lexington-Fayette	213016	30108	14.1	108.5
TX	Pasadena city	118195	16724	14.1	108.5
NM	Albuquerque city	378521	52903	14.0	110.5
VA	Newport News city	164984	23169	14.0	110.5
AZ	Tempe city	136693	18603	13.6	113.0
CA	Ontario city	131683	17853	13.6	113.0
FL	St. Petersburg city	232257	31475	13.6	113.0
CA	San Diego city	1064054	142382	13.4	116.0
IL	Rockford city	135759	18127	13.4	116.0
TN	Nashville-Davidson (remainder)	467232	62497	13.4	116.0
CA	Modesto city	161188	20930	13.0	118.5
FL	Jacksonville city (remainder)	616835	80016	13.0	118.5
IA	Des Moines city	187264	24137	12.9	120.5
PA	Allentown city	101050	12999	12.9	120.5
CA	San Francisco city	710982	90019	12.7	122.0
IL	Springfield city	103412	13065	12.6	123.5
NE	Omaha city	327507	41357	12.6	123.5
CA	Oxnard city	140627	17608	12.5	126.0
IN	Indianapolis city (remainder)	715884	89831	12.5	126.0
KS	Wichita city	299234	37321	12.5	126.0
WA	Seattle city	498333	61681	12.4	128.0
KS	Topeka city	116427	14292	12.3	129.0
CT	Waterbury city	106915	12922	12.1	130.0
CA	Riverside city	220040	26280	11.9	131.0
NC	Raleigh city	194380	22942	11.8	132.0
AL	Huntsville city	155507	18093	11.6	133.5
NC	Greensboro city	174597	20214	11.6	133.5
AZ	Glendale city	146230	16756	11.5	136.5
IN	Fort Wayne city	169404	19531	11.5	136.5
NV	Las Vegas city	253617	29084	11.5	136.5
NV	Reno city	130984	15085	11.5	136.5
NE	Lincoln city	181990	20521	11.3	139.0
CA	Escondido city	107232	12016	11.2	140.0
FL	Hollywood city	120431	13264	11.0	141.5
NY	Yonkers city	185342	20436	11.0	141.5
CO	Colorado Springs city	275562	29973	10.9	143.0
NC	Charlotte city	390602	42312	10.8	144.5
VA	Hampton city	127791	13831	10.8	144.5
CA	Anaheim city	262477	27933	10.6	146.0
TX	Irving city	153669	16209	10.5	147.0

PERPU=PERSONS FOR WHOM POVERTY STATUS IS DETERMINED

PERPOV=PERSONS IN POVERTY

PERRATE=POVERTY RATE

PERRANK=POVERTY RANK (1 IS THE POOREST)

PLACES OF AT LEAST 100,000
1990 CENSUS

STATE	NAMEPLC	PERPU	PERPOV	PERRATE	PERRANK
CA	Garden Grove city	140583	14652	10.4	148.0
NV	Paradise CDP	123461	12558	10.2	149.0
CA	Oceanside city	127333	12823	10.1	150.0
IA	Cedar Rapids city	105957	10567	10.0	151.0
CA	Chula Vista city	133083	13036	9.8	152.5
CA	Fullerton city	112000	10985	9.8	152.5
CA	Hayward city	109993	10640	9.7	154.0
AZ	Mesa city	285066	27087	9.5	155.5
MO	Independence city	110945	10557	9.5	155.5
ID	Boise City city	123174	11598	9.4	157.0
CA	San Jose city	770150	71676	9.3	158.0
LA	Metairie CDP	148930	13424	9.0	159.5
VA	Chesapeake city	148669	13329	9.0	159.5
CA	Vallejo city	106178	9007	8.5	161.0
CA	Moreno Valley city	118059	9870	8.4	162.5
HI	Honolulu CDP	355702	29873	8.4	162.5
CA	Santa Rosa city	111612	9269	8.3	164.0
TX	Arlington city	259051	21272	8.2	165.0
CA	Orange city	107155	8559	8.0	166.0
TX	Garland city	179648	14062	7.8	167.0
TX	Mesquite city	100494	7771	7.7	168.0
CO	Lakewood city	123078	9348	7.6	169.0
CO	Aurora city	219234	16288	7.4	170.0
CA	Citrus Heights CDP	106236	7735	7.3	171.0
AK	Anchorage city	220789	15614	7.1	173.0
VA	Alexandria city	109082	7732	7.1	173.0
VA	Arlington CDP	166642	11895	7.1	173.0
CA	Concord city	109787	7349	6.7	175.0
MI	Warren city	143129	9303	6.5	176.0
CA	Irvine city	107923	6948	6.4	177.0
CT	Stamford city	107007	6728	6.3	178.0
AZ	Scottsdale city	128753	7583	5.9	179.5
VA	Virginia Beach city	380369	22307	5.9	179.5
CA	Rancho Cucamonga city	100795	5516	5.5	181.0
CA	Huntington Beach city	180330	9367	5.2	182.0
CA	Torrance city	131867	6791	5.1	183.0
CA	Sunnyvale city	116342	5461	4.7	184.0
CA	Fremont city	171956	7316	4.3	185.0
CA	Thousand Oaks city	102731	4340	4.2	186.0
CA	Santa Clarita city	108980	4045	3.7	187.0
MI	Sterling Heights city	116937	4153	3.6	188.0
TX	Plano city	128084	4279	3.3	189.0
KS	Overland Park city	111020	3142	2.8	190.0

PERPU=PERSONS FOR WHOM POVERTY STATUS IS DETERMINED

PERPOV=PERSONS IN POVERTY

PERRATE=POVERTY RATE

PERRANK=POVERTY RANK (1 IS THE POOREST)